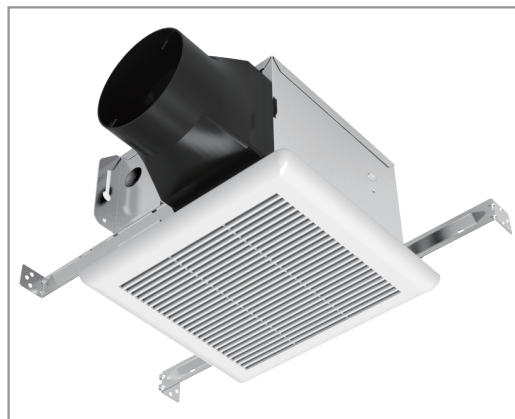


CTP80 | BATH Ventilation



Ventilation Fan

Quickly remove odours and humidity with our very quiet, Energy STAR certified high-performance bath fan. Equipped with a high-density polyethylene (hard rigid plastic) fan for quiet operation and long-lasting durability, our ceiling-mounted fan meet all cETLus safety standards.



Features

- 80 CFM
- 1.0 sones
- Thermal fuse protection
- Energy Star approved
- Includes 4" duct connector
- Recommended for bathrooms up to 75 sqft (8' ceiling)

Housing

- Wiring from inside or outside housing with 8" leads
- 26 gauge galvanized steel housing (corrosion resistant)

Motor

- Includes a built in overload disconnect for safety and longer motor life
- Includes a capacitor start motor that performs with high efficiency and long lasting reliability
- Plug-in permanently lubricated motor

Installation

- Fit any joist from Min: 12" to Max: 24" width spans
- Can be mounted with flange or hanger bars
- 4" diameter duct connectors supplied
- Heavy duty triple point mounting brackets that can be adjusted up to 24 inch joist centers without vibration
- Premium grille is made of rugged polymeric resin for durability & comes with torsion spring clips for even mounting



Cyclone Range Hoods Inc.

1361 Huntingwood Drive, Unit 16. Toronto, ON. M1S 3J1. Canada.

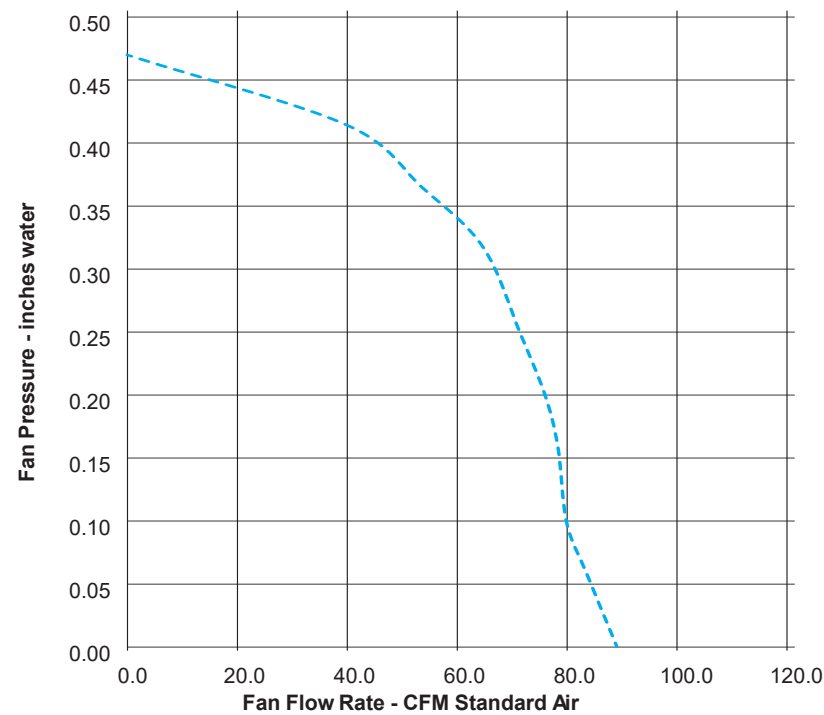
Toll Free: 1-888-293-5662

Tel: (416) 293-0933

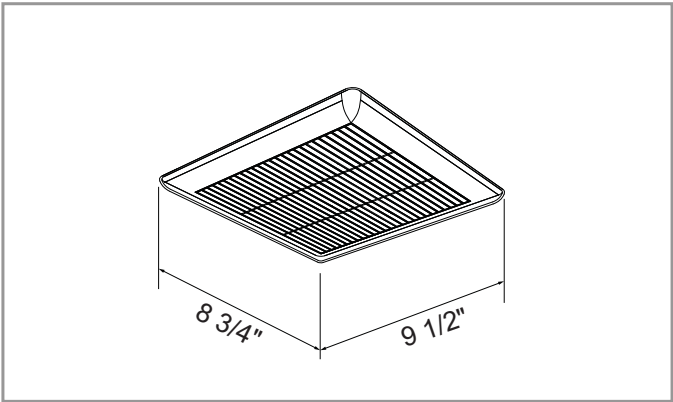
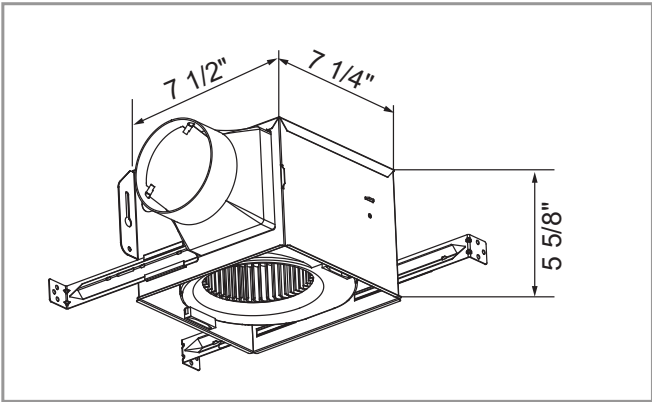
Fax: (416) 293-4793

Website: www.CycloneRangeHoods.com

CTP80 | BATH Ventilation



SPECIFICATIONS	CTP80
Static Pressure	0.1
Noise Level (Sones)	1.0
Air Flow Volume (CFM)	80
Current (Amps)	0.18
Power Consumption (Watts)	22
Electrical Connection (V/Hz)	120/60
Thermal Fuse Protection	Yes
Motor Type	AC
Blower Wheel	Centrifugal
Duct Diameter	4"



Model	Description	Packaging	Contractor Pack	Master Pack
CTP80	Bathroom Ventilation	Individual	-	Pack of 6