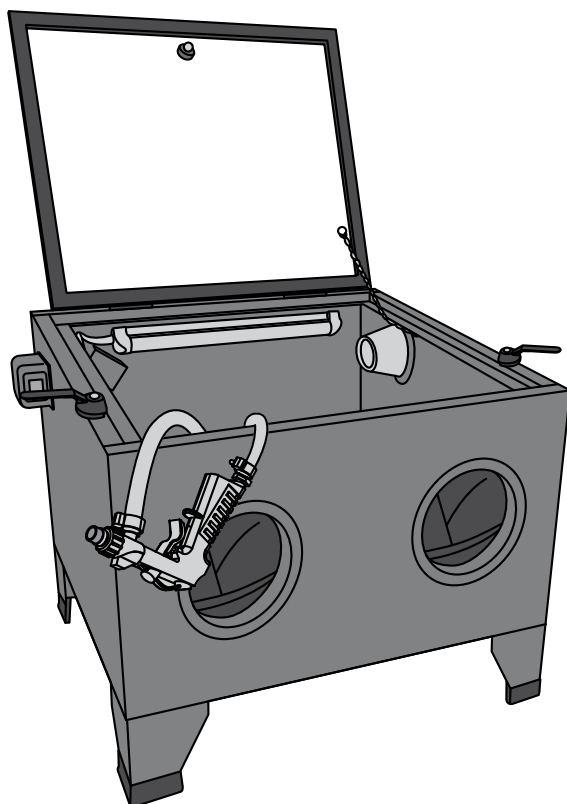


model no. 299-5511-4

**Mastercraft®**

## AIR-POWERED SANDBLAST CABINET



### **IMPORTANT:**

Please read this manual carefully before running this sandblast cabinet and save it for reference.

**INSTRUCTION  
MANUAL**

TABLE OF CONTENTS

SPECIFICATIONS	4
SAFETY GUIDELINES	5
KEY PARTS DIAGRAM	8
SETUP	9
OPERATING INSTRUCTIONS	13
MAINTENANCE	15
TROUBLESHOOTING	16
PARTS LIST	17
WARRANTY	19

NOTE:

If any parts are missing or damaged, or if you have any questions, please call our toll-free helpline at 1-800-689-9928.



SAVE THESE INSTRUCTIONS

This manual contains important safety and operating instructions. Read all instructions and follow them with use of this product.

SPECIFICATIONS

Compressor requirements	1 HP or larger compressor
Air inlet	1/4"-18 NPT
Nozzle type	Ceramic – 4, 5, 6, 7 mm
CFM Requirement	2.5 CFM @ 100 PSI
Maximum pressure	120 PSI
Working pressure	80-100 PSI
Abrasive capacity	24 U.S. gallons (90.8 L)
Blast media	Mastercraft® Blast Media (058-9447-8)
AC power for work lamp	120 V AC 60 Hz
Window dimensions (L x W)	19 x 15 3/8" (48.5 x 39 cm)
Overall dimensions (L x W x H)	25 3/16 x 19 11/16 x 19 19/64" (64 x 50 x 49 cm)
Net weight	34 lb 12 oz (15.76 kg)

SAFETY GUIDELINES

WORK AREA SAFETY WARNINGS

- **Keep the work area clean, well ventilated and well lighted.** Cluttered or dark areas increase the risks of electric shock, fire, and injury to persons.
- **Do not operate the tool in explosive atmospheres, gases, or dust.** The tool may be able to create sparks resulting in the ignition of the dust or fumes.
- **Keep bystanders, children, and visitors away while operating the tool.** Distractions can result in the loss of control of the tool.

PERSONAL SAFETY WARNINGS

- **Stay alert. Watch what you are doing and use common sense when operating the tool. Do not use the tool while tired or under the influence of drugs, alcohol, or medication.** A moment of inattention while operating the tool increases the risk of injury to persons.
- **Dress properly. Do not wear loose clothing or jewellery. Contain long hair. Keep hair, clothing, and gloves away from moving parts.** Loose clothes, jewellery, or long hair increases the risk of injury to persons as a result of being caught in moving parts.
- **Avoid unintentional starting. Make sure that the trigger is off before connecting to the air supply.** Do not carry the tool with your finger on the trigger or connect the tool to the air supply with the trigger engaged.
- **Do not overreach. Keep proper footing and balance at all times.** Proper footing and balance enables better control of the tool in unexpected situations.
- **Use safety equipment.** A dust mask, non-skid safety shoes and a hard hat must be used for the applicable conditions.
- **Always wear eye protection.** Wear ANSI-approved safety goggles.
- **Always wear hearing protection when using the tool.** Prolonged exposure to high intensity noise can cause hearing loss.

TOOL USE & CARE SAFETY WARNINGS

- This equipment is used for removal of paint, surface rust and oxidation, body filler, debris from metal surface and bulky parts, and other soft materials on workpiece. Any other usage of or modification to this equipment is deemed to be improper usage and will result in serious personal injury and/or property damage.
- Use only suitable blasting medium like glass beads, silica sand, aluminum oxide, etc. for your abrasive blasting work. Ensure that the blasting medium is totally dry and not too coarse-grained.
- Check the equipment for any possible defects before use. If the equipment exhibits any faults, it should not be used under any circumstances.
- **Do not exceed maximum working pressure 120 PSI.**

- **Disconnect the blast gun from the air source before making any adjustments, changing accessories, or storing the tool.** Such preventive safety measures reduce the risk of starting the tool unintentionally. Release the tool trigger, turn off your air compressor, detach the air supply, and safely discharge any residual air pressure before leaving the work area.
- Install an in-line shutoff valve to allow immediate control over the air supply in an emergency, even if a hose is ruptured.
- **Do not leave the blast gun unattended when it is connected to air source.** Disconnect tool from air supply before leaving.
- **Store the equipment when it is idle out of reach of children and other untrained persons.** A tool is dangerous in the hands of untrained users.
- **Check for misalignment or binding of moving parts, breakage of parts, and any other condition that affects the blast gun's operation.** If damaged, have the tool serviced before using. Many accidents are caused by poorly maintained tools. There is a risk of bursting if the tool is damaged.
- **Use only accessories that are identified by the manufacturer for the specific model.** Use of an accessory not intended for use with the specific tool model will increase the risk of injury to persons.
- **Maintain the equipment with care.** Keep the equipment clean and free of obstructions. Properly maintained equipment reduces the risk of accidents and is easier to control.
- **CA PROP 65:** This product, when used for abrasive blasting and/or similar applications, produces chemicals known to the state of California to cause cancer and birth defects or other reproductive harm. Wash hands after handling.

### TOOL SERVICE SAFETY WARNINGS

- **Tool service must be performed only by qualified repair personnel.** Service or maintenance performed by unqualified personnel could result in a risk of injury.
- **When servicing the tool, use only identical replacement parts. Use only authorized parts.**

### AIR SOURCE SAFETY WARNINGS

- **Never connect to an air source that is capable of exceeding 200 PSI.** Over pressurizing the tool may cause bursting, abnormal operation, breakage of the tool or serious injury to persons.
- **Use only clean, dry, regulated compressed air at the rated pressure or within the rated pressure range specified for the tool.** Always verify prior to using the tool that the air source has been adjusted to the rated air pressure or within the rated air-pressure range.
- **Never use oxygen, carbon dioxide, combustible gases or any bottled gas as an air source for the tool.** Such gases are capable of exploding and causing serious injury to persons.

### SPECIFIC SAFETY WARNINGS

- **Attach all accessories properly to the tool before connecting the air supply.** A loose accessory may detach or break during operation.
- **Disconnect air hose and release any built-up air pressure.** Do not service or disassemble the blast cabinet with air hose attached. Always release any built-up air, even after disconnecting hose.

- **Avoid working alone.** If an accident happens, an assistant can bring help.
- **Maintain labels and/or nameplates on the blast cabinet.** These carry important information. If unreadable or missing, have them replaced.
- **Maintain a firm grip on the blast gun when in use.**
- **Never point the blast gun toward yourself, other people, or animals.** Keep all people and animals safely away from the work area.
- **Whenever possible, perform an abrasive blasting test on a small area of the object to be blasted.** If necessary, adjust the distance to the object and/or change the nozzle of the blast gun for more effective results.
- **Read and understand all safety warnings and precautions as outlined in the manufacturer's manual for the object you intend to blast with abrasives.**
- **Obey the manual for the air compressor used to power the blast gun.**
- **Install an in-line shutoff valve to allow immediate control over the air supply in an emergency, even if a hose is ruptured.**



#### WARNING!

Read all safety warnings and instructions before attempting to install or operate this product. Failure to follow the warnings and instructions may result in personal injury and property damage.

#### CAUTION!

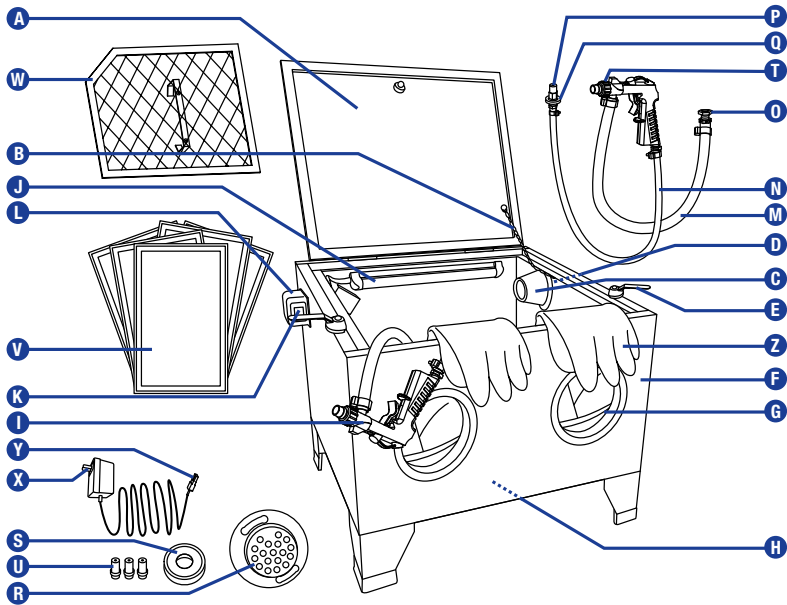
The warnings, precautions, and instructions discussed in this instruction manual cannot cover all possible conditions and situations that may occur. It must be understood by the operator that common sense and caution are factors which cannot be built into this product, but must be supplied by the operator.

#### WARNING!

- Abrasive blasting with sand containing crystalline silica can cause serious or fatal respiratory disease. Exposure to crystalline silica may cause silicosis, cancer and death. Exposure to aluminum oxide (a dust generated from material removing processes) can result in eye, skin and breathing irritation. Always wear qualified respirator and safety goggles. Avoid skin exposure. Keep the work area well ventilated.
- To prevent silicosis and silicosis-related deaths, NEVER use silica sand or other substances containing more than 1% crystalline silica as an abrasive blasting material and substitute with less hazardous materials.
- Wear washable or disposable protective clothes at the work site. Shower and change into clean clothes before leaving the work site to prevent contamination of cars, homes and other work areas.
- Do not use quartz sand. This can lead to a dangerous build-up of silicosis-inducing dust.

KEY PARTS DIAGRAM

No.	Description	No.	Description
A	Glass window	N	Air hose
B	Retaining chain	O	Nut
C	Dust filter	P	Hose connector
D	Dust collection outlet (invisible herein)	Q	Spacer
E	Latch	R	Vent cover with filter
F	Cabinet	S	Thread sealant tape
G	Gloves opening	T	Nozzle ring
H	Hopper	U	Ceramic nozzle
I	Blast gun	V	Window liner
J	Work light	W	Metal floor
K	Power switch	X	Transformer plug
L	Power switch box	Y	DC power plug
M	Siphon hose	Z	Blast gloves



**WARNING!**  
If any part is missing or damaged, do not use the product until the missing or damaged part has been replaced.

SETUP OF AIR SUPPLY

1. Install an air regulator with pressure gauge and an in-line shutoff valve in your air line as near to the blast gun as possible for best service.

**IMPORTANT:** An in-line shutoff valve is an important safety device because it controls the air supply even if the air hose is ruptured. The shutoff valve should be a ball valve because it can be closed quickly.

2. Attach an air hose to the compressor's air outlet. Connect the air hose to the air inlet of the blast gun. Other components, such as a coupler plug and quick coupler, will make operation more efficient, but are not required.

**IMPORTANT:** Do not install a female quick coupler on the blast gun. Such a coupler contains an air valve that will allow the air tool to retain pressure and operate accidentally after the air supply is disconnected.

**IMPORTANT:** The air hose must have the correct inner diameter for efficient air flow. Usually an air hose of 3/8" (9.5 mm) inner diameter is recommended.

3. Close the in-line shutoff valve between the compressor and the blast gun.

4. Turn on the air compressor according to the manufacturer's directions and allow it to build up pressure until it cycles off.

5. Adjust the air compressor's output regulator so that the air output is enough to properly power the tool, but the output will not exceed the tool's maximum air pressure at any time. Adjust the pressure gradually, while checking the air output gauge to set the right pressure range.

**IMPORTANT:** An individual air tool has its specification of air consumption (CFM). Check the specifications of your air compressor to be sure that it can support both minimum CFM (cubic feet per minute) and PSI (pounds per square inch) required. An air hose (like 3/8" x 50' air hose) may cause up to 15 PSI drop in pressure from the air compressor to the tool, so you may need to set the output air pressure of the compressor higher to maintain the required pressure at the tool.

6. Inspect the air connections for leaks. Repair any leaks found.

7. Turn off and detach the air supply and safely discharge any residual air pressure in the blast gun to prevent accidental operation.

**IMPORTANT:** Residual air pressure should not be present after the tool is disconnected from the air supply. However, it is a good safety measure to attempt to discharge the tool in a safe fashion after disconnecting to ensure that the tool is disconnected and unpowered.



**WARNING!**  
An oiler system should NOT be used with the blast gun, because the oil will mix with the material being propelled, causing poor results.

## SETUP OF EQUIPMENT

This abrasive blast cabinet is already assembled before it leaves the factory. You only need to set up the blast gun for working.

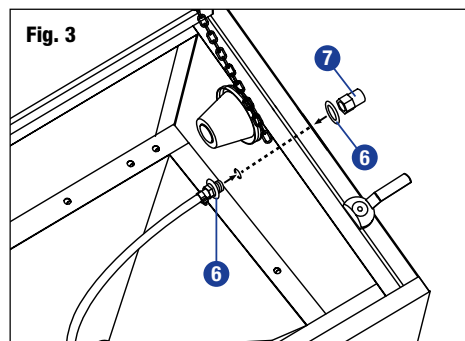
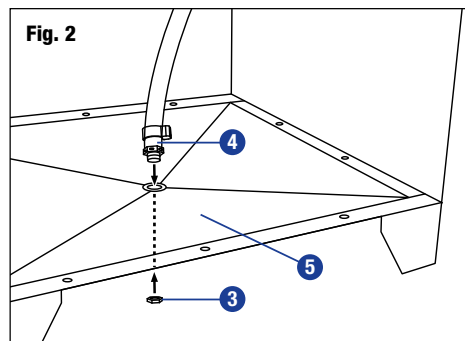
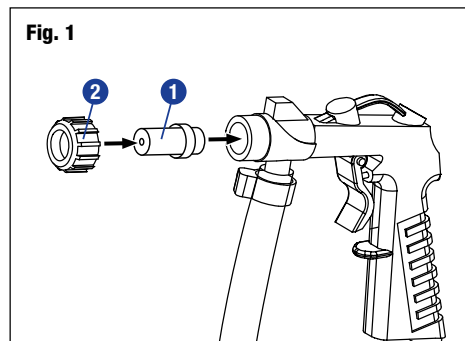
1. Remove any protective film from the outside of the tempered glass window.
2. Open the glass window and set up the blast gun. To install or change the ceramic nozzle (1), just release the nozzle ring (2), insert the required ceramic nozzle into the passage of the gun tip, and then replace the nozzle ring tightly and securely. (Fig. 1)

**IMPORTANT:** By changing to the next larger size of nozzle, production can increase significantly. Large size nozzles produce a larger cleaning pattern. This also requires a higher air pressure and greater air flow.

3. Release the nut (3) from the end of the siphon hose (4). Insert the hose end to the centre hole of the hopper (5), and secure the hose end with the nut (3) being screwed tight from the bottom of the hopper. (Fig. 2)

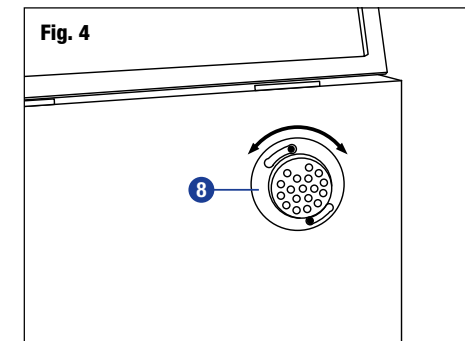
4. Put the metal floor inside the cabinet.

5. Insert the air hose end into the hole in the side panel of the cabinet with one spacer (6), and fix the air hose end secure by screwing tight the hose connector (7) onto the male threads of the air hose end with another spacer (6) from outside of the cabinet. (Fig. 3)



6. Apply the vent cover (8) with filter inside to the vent hole from the outside of the cabinet. (Fig. 4)

**IMPORTANT:** Replace or clean the filter inside the vent cover periodically (usually 30–60 minutes after sandblasting work) to keep the vent of the cabinet in good conditions. If necessary, please use the vacuum cleaner.



## SETUP OF WORKPIECE AND WORK AREA

1. Designate a work area that is clean and well-lit.

**IMPORTANT:** The work area must not allow access by children or pets to prevent distraction and injury.

2. Route the air hose along a safe route to reach the work area without creating a tripping hazard or exposing the air hose to possible damage. The air hose must be long enough to reach the work area to allow free movement while working.
3. Place the blast cabinet on a sturdy level work surface, positioning the cabinet at a level so that you can comfortably access the gloves openings and easily see into the blast cabinet through the glass window. The work surface needs to be able to support the weight of the blast cabinet and the abrasive which will fill the hopper, the workpiece and any additional material required to be close at hand.

**IMPORTANT:** It is recommended that you set up a vacuum dust collector (not provided) to remove media dust while blasting. Attach the vacuum hose (not provided) through the dust collection outlet.

**IMPORTANT:** When using a vacuum collector, clean the filter periodically to maintain good suction and effectiveness of the vacuum. Use the appropriate vacuum for the job.

4. Fill the hopper with approximately 10 lb (4.5 kg) of abrasive, checking to ensure that the abrasives are dry and clean.

**IMPORTANT:** Do not use harsh abrasives such as steel shot.

**IMPORTANT:** Ensure that the blasting medium is totally dry and not too coarse-grained. Moist or too coarse-grained blasting medium will clog the suction holes at the end of the siphon hose and the blast gun. Heed the safety instructions provided by the manufacturer of the blasting medium.

5. Set the compressor's pressure regulator to 100 PSI.

**IMPORTANT:** It should be taken into consideration that an air hose (like 3/8" x 50' air hose) may cause up to 15 PSI drop in pressure from the air compressor to the tool, so you may need to set the output air pressure of the compressor higher to maintain the required pressure at the tool.



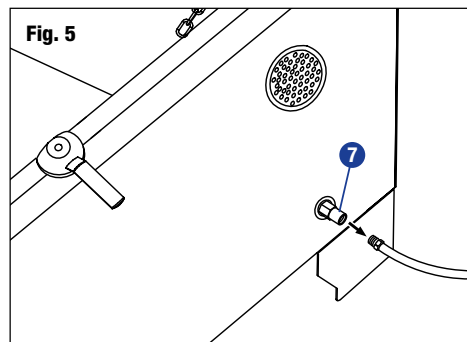
### WARNING!

Keep the vent of the cabinet in good conditions by replacing or cleaning the filter inside the vent cover periodically (usually 30–60 minutes after sandblasting work). If the vent of the cabinet is blocked, the air pressure will build up inside the cabinet, resulting in the blasting medium escaping from around the cabinet glass window during operation.

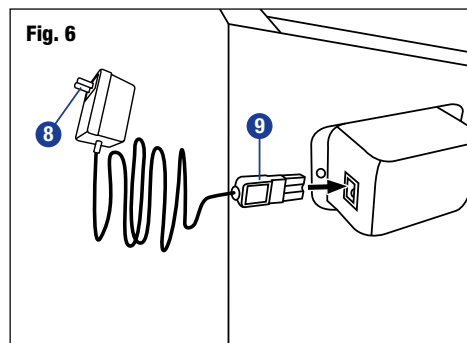


**IMPORTANT:** the working pressure for the blast gun ranges from 80 to 120 PSI depending on the size of the nozzle. The bigger the nozzle is, the higher working pressure it requires.

6. Connect the compressor hose to the hose connector (7) set on the external wall of the cabinet. (Fig. 5)



7. Insert the transformer plug (8) into the nearest 110 V, grounded electrical outlet. Apply the DC power plug (9) at the end of wire to the power switch box (10). (Fig. 6)



8. Press the power switch to ON ("O") position to start the work light.

**IMPORTANT:** Route the power cord from the cabinet to the grounded wall outlet, along a safe path without creating a tripping hazard or exposing the power cord to possible damage.

**IMPORTANT:** Always turn off the power switch of the work light and unplug the transformer plug from its electrical outlet before performing any cleaning procedures of the blast cabinet.

9. Holding the blast gun so that it is pointing away from you, open the shutoff valve at the air line. If leaking is detected, disconnect the air hose and repair before use.



### WARNING!

INSTRUCTIONS PERTAINING TO A RISK OF FIRE, ELECTRIC SHOCK, OR INJURY TO PERSONS:

- Check with a qualified electrician if you are in doubt as to whether the outlet is properly grounded.
- Do not modify the power cord plug provided with the tool.
- Do not use the tool if the power cord or plug is damaged. If damaged, have it repaired by a service facility before use. If the plug will not fit the outlet, have a proper outlet installed by a qualified electrician.



## OPERATING INSTRUCTIONS

### GENERAL OPERATING INSTRUCTIONS

1. Place the material to be sandblasted on the metal floor inside the blast cabinet.
2. Close the glass window in place with the latch. Check to ensure that the latch is secured.
3. Place your hands into the blast gloves, making sure that your fingers are in the proper positions and that you can easily move your hands and grip objects.
4. Grip the blast gun with one hand. Point the nozzle at the bottom of the cabinet and operate the blast gun for a moment to ensure that everything is working correctly. If leaking is detected, or blasting material dust is escaping the seals of the glass window, disconnect the air hose and have it repaired before using.
5. Hold the object you are working with in your other hand. Position your fingers so the blast glove is not in the way of the area you are blasting. You may have to re-position your fingers many times during the blasting to ensure that you reach every area of your object.
6. Squeeze the trigger of the blast gun to start operation. Release the trigger to stop.

**IMPORTANT:** Aim the nozzle of the blast gun directly at the surface of the material. Bring the nozzle to within 2 inches of the material if necessary. Move the gun in a side-to-side or circular motion, always making sure that your fingers are not in the way.

**IMPORTANT:** Use even passes of the blast gun to remove rust, body filler, or other soft materials.

7. To check on the progress of your blasting, remove your hand from the blast gun first and pull your hand from the blast glove. Remove your other hand. Once the blast gun is off, open the glass window and inspect your material. If additional blasting is required, follow steps 1 through 7 as needed.

**IMPORTANT:** Use caution when sandblasting unfamiliar material. Test the blast gun on a small area before proceeding. This will ensure that you will not damage or pit the material being sandblasted.

8. If the blast gun requires more force to accomplish the task, verify that the gun is receiving sufficient, unobstructed airflow (CFM) and increase the pressure (PSI) output of the regulator up to the maximum air pressure rating for the gun.

**IMPORTANT:** If the blast gun still does not have sufficient force at maximum pressure and sufficient airflow, then a larger tool may be required.

9. Once your work is completed, remove your hands from the blast gloves and shut off the compressor. Open the glass window (1) and remove your material from the blast cabinet.

**IMPORTANT:** To prevent accidents, turn off the blast gun, detach the air supply, safely discharge any residual air pressure in the gun, and release the trigger after use.

**IMPORTANT:** Clean external surfaces of the blast gun with a clean, dry cloth, and apply a thin coat of tool oil (not included). Store the gun indoors out of reach of children.



### WARNING!

- Always wear qualified safety goggles, full face shield and protective dust mask or respirator when using the blast cabinet.
- Do not exceed the maximum working pressure of 120 PSI for the tool operation.
- Do not aim the gun at your fingers or the blast gloves.
- Do not operate the gun with the tempered glass window open or outside of the blast cabinet.

## CHANGE OF BLASTING MEDIUM

**IMPORTANT:** It is not necessary to remove the blasting medium from the hopper after every use. However, clean out the hopper when a different blasting medium is to be used or when the medium gets worn down. Follow the steps below to clean the hopper.

1. Disconnect the dust collection system from the blast cabinet.
2. Disconnect air supply hose from the blast cabinet.
3. Pull the blast gloves through the glove openings so that they are out of the way of the inside of the blast cabinet.
4. Remove the metal floor from the blast cabinet.
5. Straddle the blast cabinet over two saw horses with an open container below, which is large enough to hold the abrasive medium that will flow into the container.
6. Unthread the nut from the bottom of the hopper. Remove the blast gun from the cabinet. Allow the abrasive medium that will flow into the container.
7. Use your compressor set at 10 PSI to help blow any excess abrasive out of the hopper and into the container. In addition, use the compressor to clean the siphon hose.
8. Replace the blast gun and the siphon hose with the nut from the bottom of the hopper once the hopper is empty. Replace the metal floor.
9. Push the blast gloves back into the blast cabinet.
10. Fill the hopper with new blasting medium.

## MAINTENANCE

### MAINTENANCE OF BLAST GUN

1. Remove the siphon hose from the blast gun.
2. Operate the blast gun for a few seconds to clear the passages.
3. Turn off the shutoff valve at the air line.
4. Disconnect the air supply hose from the air compressor.
5. Discharge any residual air from the air line and the blast gun.
6. Clean external surfaces of the blast gun with a clean, dry cloth, and apply a thin coat of tool oil. Store the gun indoors out of reach of children.

**IMPORTANT:** After every use, clean out the blast gun by following the above steps.

### MAINTENANCE OF SEALS

Sandblasting is a damaging operation. In time, the internal parts of the blast gun will become worn. When performance of the blast gun decreases, take it to a qualified service technician for repair.

### MAINTENANCE OF DAILY AIR SUPPLY

Perform maintenance on the air supply according to the component manufacturers' instruction every day. The moisture filter must be regularly drained. Performing routine maintenance on the air supply will allow the blast gun to operate more safely and will reduce wear on the gun as well.



#### WARNING!

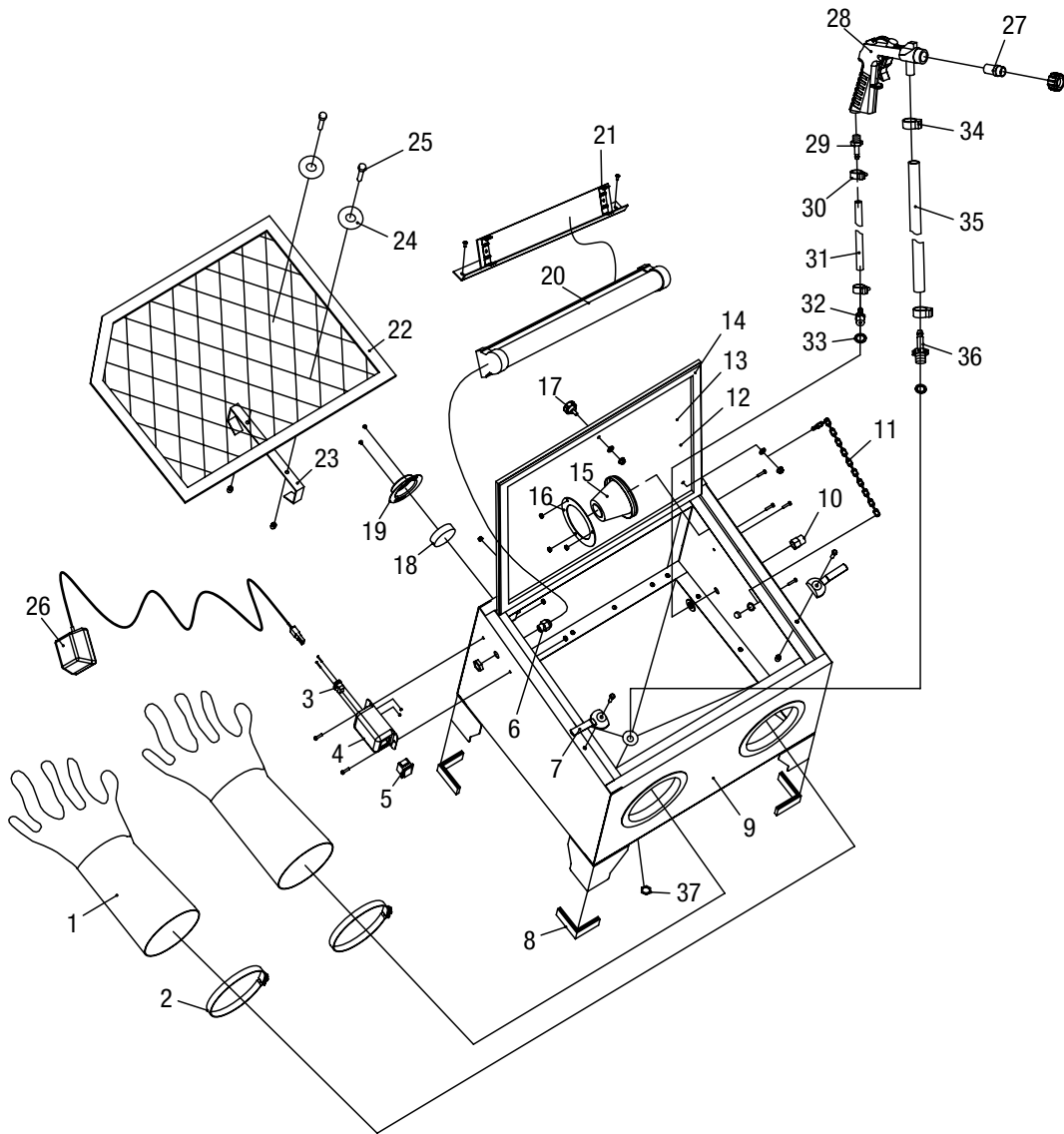
Always wear qualified safety goggles, full face shield and protective dust mask or respirator when replacing the abrasive medium in the blast cabinet.



TROUBLESHOOTING

Problem	Possible Cause	Corrective Action
Decreased output.	<ol style="list-style-type: none"> <li>Not enough air pressure and/or air flow.</li> <li>Obstructed trigger.</li> <li>Air leaking from loose housing.</li> <li>Mechanism contaminated.</li> <li>Damaged or kinked air/abrasive hose.</li> </ol>	<ol style="list-style-type: none"> <li>Check for loose connections and make sure that air supply is providing enough air flow (CFM) at required pressure (PSI) to the air tool inlet.</li> <li>Clean around trigger to ensure free movement.</li> <li>Make sure that housing is properly assembled and tight.</li> <li>Have qualified technician clean and lubricate mechanism. Install in-line filter in air supply system as said in the manual.</li> <li>Inspect and replace hose.</li> </ol>
Severe air leakage.	<ol style="list-style-type: none"> <li>Cross-threaded housing components.</li> <li>Damaged valve or housing.</li> <li>Dirty, worn or damaged valve.</li> </ol>	<ol style="list-style-type: none"> <li>Check for incorrect alignment and uneven gaps. If cross-threaded, disassemble and replace damaged parts before use.</li> <li>Replace damaged components.</li> <li>Clean and replace valve assembly.</li> </ol>
Sand-blasting pattern not as expected.	<ol style="list-style-type: none"> <li>The air is not dry enough.</li> <li>Grain size of blasting medium not uniform.</li> <li>Blasting medium impure.</li> </ol>	<ol style="list-style-type: none"> <li>Use clean and dry air.</li> <li>Replace blasting medium.</li> <li>Clean and/or replace blasting medium.</li> </ol>

EXPLODED VIEW



**WARNING!**

Follow all safety precautions whenever diagnosing or servicing the hose reel. Disconnect air supply before service.

No.	Description	Qty.	No.	Description	Qty.
1	Blast gloves	1	19	Vent cover	1
2	Clamp	1	20	LED work light	1
3	AC power inlet	1	21	Light frame	1
4	Switch box	1	22	Metal floor	1
5	Switch	1	23	Metal floor stand	1
6	Cord connector	1	24	Cushion	2
7	Latch	2	25	Screw	2
8	Rubber foot	4	26	Transformer	1
9	Tub	1	27	Ceramic nozzle	4
10	Hose connector	1	28	Blast gun	1
11	Retaining chain	1	29	Gun inlet connector	1
12	Window liner	1	30	Clamp	2
13	Tempered glass window	1	31	Air hose	1
14	Seal	1	32	Clamp	1
15	Dust filter	1	33	Cushion	2
16	Filter ring	1	34	Clamp	2
17	Handle knob	1	35	Siphon hose	1
18	Filter	1	36	Suction tip	1

3-Year Limited Warranty

- This Mastercraft product is guaranteed for a period of **three (3) years** from the date of original retail purchase, against defects in materials and workmanship.
- Subject to the conditions and limitations described below, this product, if returned to us with proof of purchase within the stated warranty period and if covered under this warranty, will be repaired or replaced (with the same model, or one of equal value or specification), at our option. We will bear the cost of any repair or replacement and any costs of labour relating thereto.
- These warranties are subject to the following conditions and limitations**
- a) a bill of sale verifying the purchase and purchase date must be provided;
  - b) this warranty will not apply to any product or part thereof which is worn or broken or which has become inoperative due to abuse, misuse, accidental damage, neglect or lack of proper installation, operation or maintenance (as outlined in the applicable owner's manual or operating instructions) or which is being used for industrial, professional, commercial or rental purposes;
  - c) this warranty will not apply to normal wear and tear or to expendable parts or accessories that may be supplied with the product which are expected to become inoperative or unusable after a reasonable period of use;
  - d) this warranty will not apply to routine maintenance and consumable items such as, but not limited to, fuel, lubricants, vacuum bags, blades, belts, sandpaper, bits, fluids, tune-ups or adjustments;
  - e) this warranty will not apply where damage is caused by repairs made or attempted by others (i.e. persons not authorized by the manufacturer);
  - f) this warranty will not apply to any product that was sold to the original purchaser as a reconditioned or refurbished product (unless otherwise specified in writing);
  - g) this warranty will not apply to any product or part thereof if any part from another manufacturer is installed therein or any repairs or alterations have been made or attempted by unauthorized persons;
  - h) this warranty will not apply to normal deterioration of the exterior finish, such as, but not limited to, scratches, dents, paint chips, or to any corrosion or discolouring by heat, abrasive and chemical cleaners; and
  - i) this warranty will not apply to component parts sold by and identified as the product of another company, which shall be covered under the product manufacturer's warranty, if any.

**NOTE:**  
The manufacturer and/or distributor has provided the parts list and assembly diagram in this manual as a reference tool only. Neither the manufacturer nor distributor makes any representation or warranty of any kind to the buyer that he or she is qualified to make any repairs to the product, or that he or she is qualified to replace any parts of the product. In fact, the manufacturer and/or distributor expressly states that all repairs and parts replacements should be undertaken by certified and licensed technicians, and not by the buyer. The buyer assumes all risk and liability arising out of his or her repairs to the original product or replacement parts thereto, or arising out of his or her installation of replacement parts thereto.

### **Additional Limitations**

This warranty applies only to the original purchaser and may not be transferred. Neither the retailer nor the manufacturer shall be liable for any other expense, loss or damage, including, without limitation, any indirect, incidental, consequential or exemplary damages arising in connection with the sale, use or inability to use this product.

### **Notice to Consumer**

This warranty gives you specific legal rights, and you may have other rights, which may vary from province to province. The provisions contained in this warranty are not intended to limit, modify, take away from, disclaim or exclude any statutory warranties set forth in any applicable provincial or federal legislation.

Made in China

Imported by

Mastercraft Canada Toronto, Canada M4S 2B8