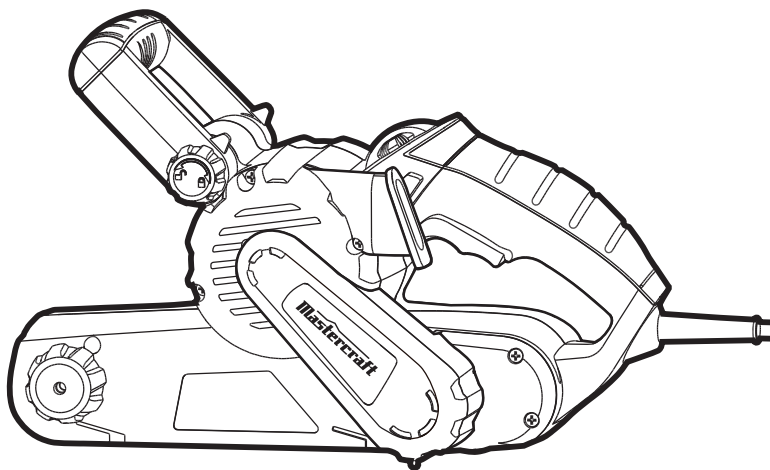


model no. 054-7240-8

Mastercraft®
IMD

3 X 21" BELT SANDER



IMPORTANT:

Read and understand this instruction manual thoroughly before using the product.

INSTRUCTION MANUAL

TABLE OF CONTENTS

Technical Specifications	4
Safety Guidelines	5
Key Parts Diagram	9
Assembly Instructions	10
Operating Instructions	12
Maintenance	13
Troubleshooting	14
Part list	15
Warranty	17

NOTE: If any parts are missing or damaged, or if you have any questions, please call our toll-free helpline at 1-800-689-9928

**SAVE THESE INSTRUCTIONS**

- This manual contains important safety and operating instructions. Read all instructions and follow them with use of this product.

model no. 054-7240-8 | contact us 1.800.689.9928

TECHNICAL SPECIFICATIONS

Rated voltage	120V~, 60Hz
Rated power input	6.0 A
Belt speed	0–1100 ft/min
Belt size	3 x 21"
Net weight	7 lb 1 oz (3.2 kg)

RULES FOR SAFE OPERATION



WARNING!

Safety symbols in this Instruction Manual are used to flag possible dangers. The safety symbols and their explanations require your full understanding. The safety warnings do not, by themselves, eliminate any danger, nor are they substitutes for proper accident prevention measures.



WARNING!

This Safety Alert Symbol indicates caution, warning, or danger. Failure to obey a safety warning can result in serious injury to yourself or others. To reduce the risk of injury, fire, or electric shock, always follow the safety precautions.

KNOW YOUR TOOL

To operate this tool, carefully read this Instruction Manual and all labels affixed to the Belt Sander before using. Keep this Instruction Manual available for future reference.

IMPORTANT

This tool should only be serviced by a qualified service technician. For more information, call the toll-free helpline at 1-800-689-9928.

READ ALL INSTRUCTIONS THOROUGHLY

SAVE THESE INSTRUCTIONS

SAFETY GUIDELINES FOR POWER TOOLS



WARNING!

Read all safety warnings and instructions. Failure to follow the warnings and instructions may result in electric shock, fire and/or serious injury.

SAVE ALL WARNINGS AND INSTRUCTIONS FOR FUTURE REFERENCE.

The term “power tool” in the warnings refers to your mains-operated (corded) power tool or battery-operated (cordless) power tool.

WORK AREA SAFETY

- **Keep work area clean and well lit.** Cluttered or dark areas invite accidents.
- **Do not operate power tools in explosive atmospheres, such as in the presence of flammable liquids, gases or dust.** Power tools create sparks, which may ignite the dust or fumes.
- **Keep children and bystanders away while operating a power tool.** Distractions can cause you to lose control.

ELECTRICAL SAFETY

- **Power tool plugs must match the outlet.** Never modify the plug in any way. Do not use any adapter plugs with earthed (grounded) power tools. Unmodified plugs and matching outlets will reduce risk of electric shock.
- **Avoid body contact with earthed or grounded surfaces such as pipes, radiators, ranges and refrigerators.** There is an increased risk of electric shock if your body is earthed or grounded.
- **Do not expose power tools to rain or wet conditions.** Water entering a power tool will increase the risk of electric shock.
- **Do not abuse the cord.** Never use the cord for carrying, pulling or unplugging the power tool. Keep the cord away from heat, oil, sharp edges or moving parts. Damaged or entangled cords increase the risk of electric shock.
- **When operating a power tool outdoors, use an extension cord suitable for outdoor use.** Use of a cord suitable for outdoor use reduces the risk of electric shock.
- **If operating a power tools in a damp location is unavoidable, use a ground-fault circuit interrupter (GFCI) protected supply.** Use of a GFCI reduces the risk of electric shock.

PERSONAL SAFETY

- **Stay alert, watch what you are doing and use common sense when operating a power tool.** Do not use a power tool while you are tired or under the influence of drugs, alcohol or medication. A moment of inattention while operating power tools may result in serious personal injury.
- **Use personal protective equipment.** Always wear eye protection. Protective equipment such as dust mask, non-skid safety shoes, hard hat, or hearing protection used for appropriate conditions will reduce personal injuries.
- **Prevent unintentional starting.** Ensure that the switch is in the off-position before connecting to power source or battery pack, picking up or carrying the tool. Carrying power tools with your finger on the switch or energising power tools that have the switch on invites accidents.
- **Remove any adjusting key or wrench before turning the power tool on.** A wrench or a key left attached to a rotating part of the power tool may result in personal injury.
- **Do not overreach. Keep proper footing and balance at all times.** This enables better control of the power tool in unexpected situations.
- **Dress properly. Do not wear loose clothing or jewellery. Keep your hair, clothing and gloves away from moving parts.** Loose clothes, jewellery or long hair can be caught in moving parts.
- **If devices are provided for the connection of dust extraction and collection facilities, ensure that these are connected and properly used.** Use of dust collection devices can reduce dust-related hazards.

POWER TOOL USE AND CARE

- **Do not force the power tool.** Use the correct power tool for your application. The correct power tool will do the job better and more safely at the rate for which it was designed.

- **Do not use the power tool if the switch does not turn it on and off.** Any power tool that cannot be controlled with the switch is dangerous and must be repaired.
- **Disconnect the plug from the power source and/or the battery pack from the power tool before making any adjustments, changing accessories, or storing power tools.** Such preventive safety measures reduce the risk of starting the power tool accidentally.
- **Store idle power tools out of the reach of children and do not allow persons unfamiliar with the power tool or these instructions to operate the power tool.** Power tools are dangerous in the hands of untrained users.
- **Maintain power tools.** Check for misalignment or binding of moving parts, breakage of parts and any other condition that may affect the power tool's operation. If damaged, have the power tool repaired before use. Many accidents are caused by poorly maintained power tools.
- **Keep cutting tools sharp and clean.** Properly maintained cutting tools with sharp cutting edges are less likely to bind and are easier to control;
- **Use the power tool, accessories, tool bits, etc. in accordance with these instructions, taking into account the working conditions and the work to be performed.** Use of the power tool for operations different from those intended could result in a hazardous situation.

SERVICE

- **Have your power tool serviced by a qualified repair person using only identical replacement parts.** This will ensure that the safety of the power tool is maintained.

SPECIFIC SAFETY RULES FOR BELT SANDER

- **Hold the power tool by insulated gripping surfaces when performing an operation where the cutting accessory may contact hidden wiring or its own cord.** If a cutting accessory contacts a "live" wire, it may cause the exposed metal parts of the power tool to become "live" and shock the operator.
- **The label on your tool may include the following symbols. The symbols and their definitions are as follows:**

V Volts

A Amperes

Hz Hertz

W Watts

min Minutes

~ Alternating current

== Direct current

n₀ No-load speed

 Class II Construction

.../min Revolutions or reciprocation per minute



..... Grounding terminal

BPM Beats per minute



..... WARNING – To reduce the risk of injury, user must read instruction manual.



..... WARNING – To reduce the risk of injury always wear eye protection.



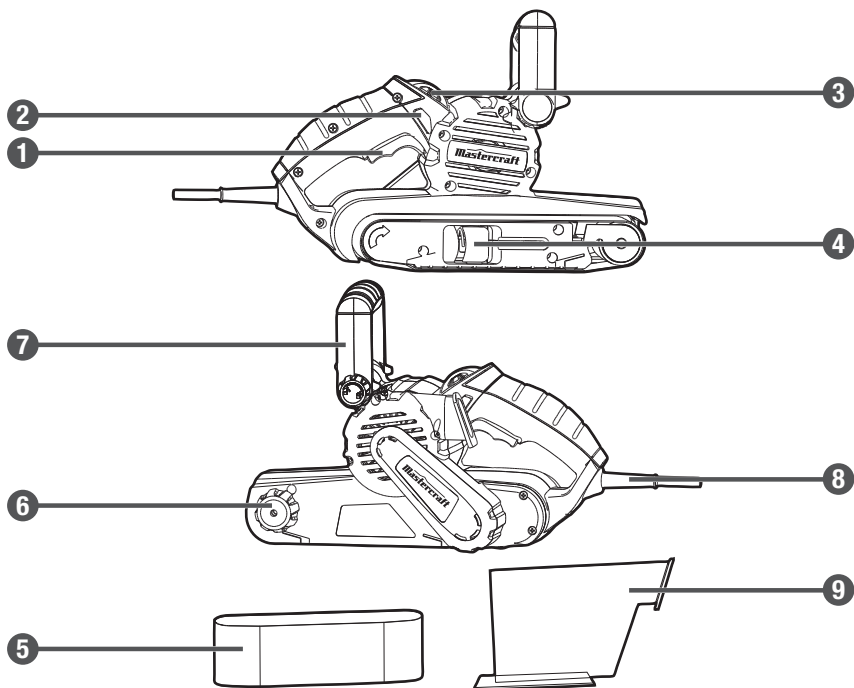
..... WARNING – To reduce the risk of injury always wear ear protection.

- **A suitable breathing respirator must be worn while sanding lead paint, some woods and metal to avoid breathing the harmful/toxic dust or air.**
- **Always wear safety goggles and a dust mask when sanding, especially sanding over-head.**
- **The machine is not suitable for wet sanding.**
- **Do not use sanding paper larger than needed.** Extra paper extending beyond the sanding pad can also cause serious lacerations.
- **Secure the workpiece.** A workpiece clamped with clamping devices or in a vice is held more securely than by hand.
- **Wear protective gloves when changing cutting tools.** Cutting tools become hot after prolonged usage.

PACKAGE CONTENTS

Belt sander, dust bag, fine belt, coarse belt and instruction manual

KEY PARTS DIAGRAM



No.	Part
1	ON/OFF 2-finger trigger switch
2	"Lock-ON" button
3	Adjustable belt speed knob
4	Quick release tension lever
5	Sander belt

No.	Part
6	Belt adjustment knob
7	3-position adjustable handle
8	Cord guard
9	Dust collection bag



WARNING!

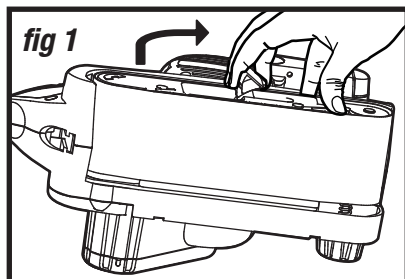
- Remove the sander from the package and examine it carefully. Do not discard the carton or any packaging material until all parts have been examined.

ASSEMBLY INSTRUCTIONS

SANDER BELT (fig 1)

To install belt:

1. Place sander on its side and pull the quick release tension lever out, as shown in fig 1.
2. Insert the new belt around both rollers. Ensure the arrow on the inside of belt is pointing in the direction of rotation as indicated on housing.
3. Once the belt is centred over the rollers and bottom plate, place quick release tension lever back in its original position to restore belt tension.



To remove belt:

1. Place the sander on its side and rotate the quick-release lever away from the sander, as shown in fig.1.
2. With the sander on its side and the open side facing you, you can easily remove the belt.



WARNING!

- Always disconnect the sander from its power supply before attaching or removing sandpaper.

BELT ADJUSTMENT KNOB (fig 2)

Your sander features an automatic belt-control system that helps to keep the belt running in the centre of the rollers. The system has been preset at the factory, but may require adjustment to avoid frayed belt edges and wear on the sander frame when a belt is changed or an older belt stretches.

To adjust the belt (if necessary)

1. Plug in the cord with the tool OFF.
2. Hold handle of the sander with one hand and tilt the sander so that the belt is facing the operator.
3. Squeeze trigger switch to begin rotation of the belt.
4. Turn the belt adjustment knob counterclockwise to move the belt away from the sander motor. Turn the belt adjustment knob clockwise to move it towards the sander motor.
5. Release the trigger switch and make sure that the belt has come to a complete stop before setting the tool down.

3-position adjustable handle

Rotate the handle knob and position handle to one of the three positions. Tighten the knob to secure handle in place (see fig 3).

INSTALLING AND REMOVING THE DUST COLLECTION BAG

To install: Align the edge of dust port with the slot of dust bag outlet. Insert into tool until firmly seated (see fig 4).

To remove: Lift dust bag outlet up, and gently pull on dust bag.

To clean the dust bag: Empty the dust bag by unzipping the lever lock (see B in fig 5) located on bottom of the bag, gently tap to remove dust.

Occasionally, slip the bag off of the frame and turn bag inside out. Brush dust off of the lining using a soft brush.

fig 2

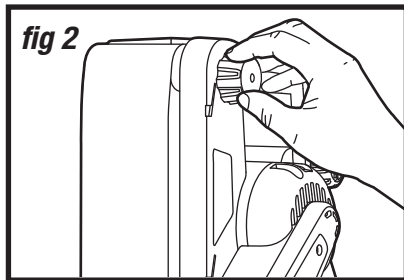


fig 3

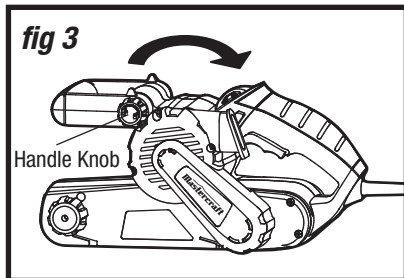


fig 4

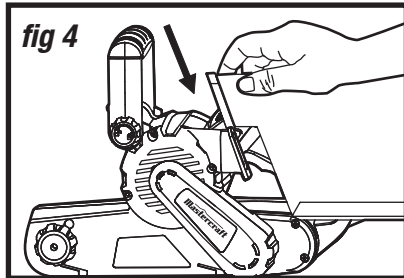
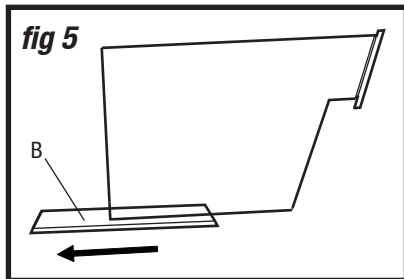


fig 5



OPERATING INSTRUCTIONS

TURNING THE SANDER ON AND OFF

The tool can be turned “ON” or “OFF” by squeezing or releasing the trigger.

“LOCK-ON” BUTTON

1. The tool is also equipped with a “Lock-ON” button that allows continuous operation without continually holding the trigger.
2. To lock switch “ON”: Squeeze trigger, depress the “Lock-ON” button, and release trigger.
3. To unlock switch: Squeeze trigger, then release trigger without depressing the “Lock-ON” button.

GENERAL SANDING

1. Be sure the cord is clear of the belt. Grasp the handles firmly.
2. Start the sander off of the work surface to avoid gouging the belt. NEVER start or stop the sander with the belt in contact with the work surface.
3. Place the heel of the sander on the work surface first. Then, with a forward motion, begin the sanding stroke as the tool is lowered onto the work surface.
4. Use short, overlapping strokes, moving the sander slowly back and forth across the work surface.
5. Avoid tilting or rocking the sander or sanding in one spot for too long. This causes gashes and hollows in the surface. Do not apply pressure to the sander. The sander is weighted for the pressure needed. Too much pressure will overload the motor and reduce the belt speed.
6. Begin sanding with a coarser grit sandpaper and gradually use finer grits, until the desired finish is achieved. Do not switch from a coarse grit to a very fine grit in one step.
7. To stop, lift the sander from the work surface, then turn the sander OFF. Disengage the Lock-ON button. Allow the sander to come to a complete stop before setting it down. A moving belt will cause the sander to “run away” even if the motor is off.



WARNING!

- Before sanding small workpieces, ensure workpiece is securely held in a vise or clamp.
- Sanding can produce clouds of fine dust particles that can ignite in the presence of sparks or an open flame. To avoid injury, always use your sander in a well-ventilated area.
- For your safety and to avoid damage, turn the sander ON and OFF only when the sander is not in contact with a surface.

MAINTENANCE

Before cleaning or performing any maintenance, make sure the sander has been disconnected from the power supply. Keep all ventilation openings clean. Avoid using solvents when cleaning plastic parts. Most plastics are susceptible to damage from various types of commercial solvents and may be damaged by their use. Use a clean cloth to remove dirt, oil and grease.



WARNING!

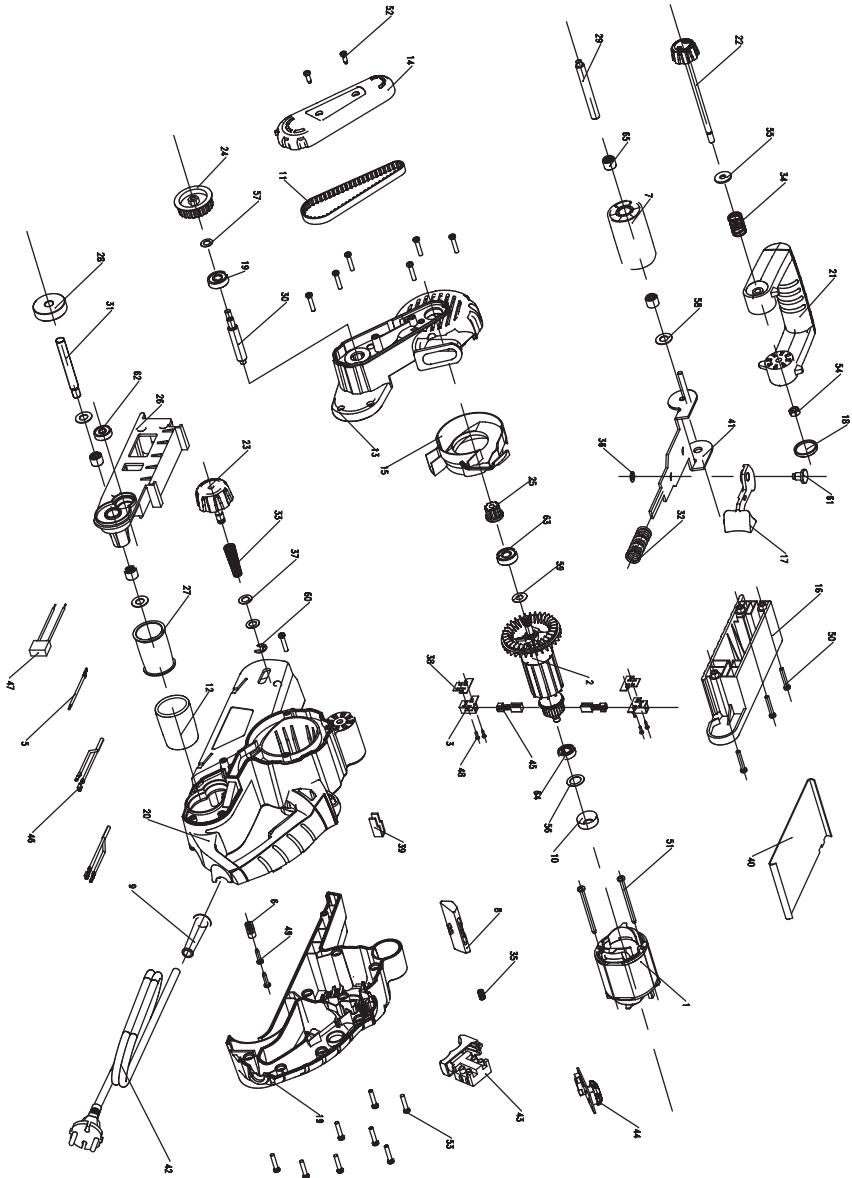
- Do not let brake fluids, gasoline, petroleum-based products, penetrating oil, etc., come in contact with plastic parts. They contain chemicals that can damage, weaken or destroy plastic.
- To ensure safety and reliability, all repairs should be performed by a qualified service technician.
- If the power cord is damaged, it must be replaced with an identical replacement part and be installed by an authorized service technician.

TROUBLESHOOTING

Problem	Possible Causes	Solution
The belt sander does not work	The sander is not connected to a power source	Connect the plug to a power source

If any parts are missing or damaged, or if you have any questions, please call the Toll-free Helpline, at 1-800-689-9928.

EXPLODED VIEW



No.	Part No.	Description
1	2740085000	Stator
2	2750093000	Rotor
3	2800026000	Brush Holder
4	2820230000	Bracket Assembly
5	2820334000	Internal Wire Assembly 1
6	3120234000	Cord Anchorage
7	3120398000	Front Pulley
8	3120516000	Lock Button
9	3121011000	Cord Guard
10	3121026000	Bearing Holder
11	3121034000	Timing Belt
12	3128299000	Rubber Bushing
13	3121102000	Left Housing
14	3121103000	Belt Cover
15	3121106000	Fan Baffle
16	3121107000	Mounting Cover
17	3121113000	Lever
18	3121115000	Front Handle Cover
19	3320165000	Right Housing
20	3320166000	Middle Housing
21	3320182000	Front Handle
22	3400036000	Lock Knob
23	3400037000	Adjusting Knob
24	3420101000	Big Belt Pulley
25	3420102000	Small Belt Pulley
26	3420308000	Mounting
27	3420309000	Rear Pulley
28	3520032000	Gear
29	3550143000	Front Pulley Shaft
30	3550145000	Gear Shaft
31	3550331000	Rear Pulley Shaft
32	3660129000	Spring
33	3660130000	Spring

No.	Part No.	Description
34	3660131000	Spring
35	3660242000	Spring
36	3700145000	Washer A
37	3700183000	Washer C
38	3700487000	Epoxy Board
39	3700564000	Belt Control Plate
40	3700566000	Mounting Plate
41	3700629000	Front Pulley Bracket
42	4810002000	Power Cord & Plug
43	4870305000	Switch
44	4900036000	Speed Adjustor
45	4960010000	Carbon Brush
46	4970057000	Inductor Assembly
47	4970273000	Capacitor
48	5610006000	Tapping Screw
49	5610024000	Tapping Screw
50	5610034000	Tapping Screw
51	5610049000	Tapping Screw
52	5610093000	Tapping Screw
53	5610106000	Tapping Screw
54	5630011000	Hexagon Nut
55	5650017000	Plain Washer
56	5650038000	Plain Washer
57	5650048000	Wave Washer
58	5650049000	Plain Washer
59	5650050000	Plain Washer
60	5660029000	E Ring
61	5680017000	Rivet
62	5700004000	Ball Bearing
63	5700005000	Ball Bearing
64	5700006000	Ball Bearing
65	5700031000	Needle Bearing

If any parts are missing or damaged, or if you have any questions, please call the Toll-free Helpline, at 1-800-689-9928.



This Mastercraft product is guaranteed for a period of **3 years from the date of original retail purchase** against defects in workmanship and materials, except for the following components:

- a) Component A: Batteries, chargers and carrying case, which are guaranteed for a period of 2 years from the date of original retail purchase against defects in workmanship and materials;
- b) Component B: Accessories, which are guaranteed for a period of 1-year from the date of original retail purchase against defects in workmanship and materials.

Subject to the conditions and limitations described below, this product, if returned to us with proof of purchase within the stated warranty period and if covered under this warranty, will be repaired or replaced (with the same model, or one of equal value or specification), at our option. We will bear the cost of any repair or replacement and any costs of labour relating thereto.

These warranties are subject to the following conditions and limitations:

- a) a bill of sale verifying the purchase and purchase date must be provided;
- b) this warranty will not apply to any product or part thereof which is worn or broken or which has become inoperative due to abuse, misuse, accidental damage, neglect or lack of proper installation, operation or maintenance (as outlined in the applicable owner's manual or operating instructions) or which is being used for industrial, professional, commercial or rental purposes;
- c) this warranty will not apply to normal wear and tear or to expendable parts or accessories that may be supplied with the product that are expected to become inoperative or unusable after a seasonable period of use;
- d) this warranty will not apply to routine maintenance and consumable items such as, but not limited to, fuel, lubricants, vacuum bags, blades, belts, sandpaper, bits, fluids, tune-ups or adjustments;
- e) this warranty will not apply where damage is caused by repairs made or attempted by others (i.e. persons not authorized by the manufacturer);
- f) this warranty will not apply to any product that was sold to the original purchaser as a reconditioned or refurbished product (unless otherwise specified in writing);
- g) this warranty will not apply to any product or part thereof if any part from another manufacturer is installed therein or any repairs or alterations have been made or attempted by unauthorized persons;

- h) this warranty will not apply to normal deterioration of the exterior finish, such as, but not limited to, scratches, dents, paint chips, or to any corrosion or discolouring by heat, abrasive and chemical cleaners; and
- i) this warranty will not apply to component parts sold by and identified as the product of another company, which shall be covered under the product manufacturer's warranty, if any.

Additional Limitations

This warranty applies only to the original purchaser and may not be transferred. Neither the retailer nor the manufacturer shall be liable for any other expense, loss or damage, including, without limitation, any indirect, incidental, consequential or exemplary damages arising in connection with the sale, use or inability to use this product.

Notice to Consumer

This warranty gives you specific legal rights, and you may have other rights, which may vary from province to province. The provisions contained in this warranty are not intended to limit, modify, take away from, disclaim or exclude any statutory warranties set forth in any applicable provincial or federal legislation.

Made in China

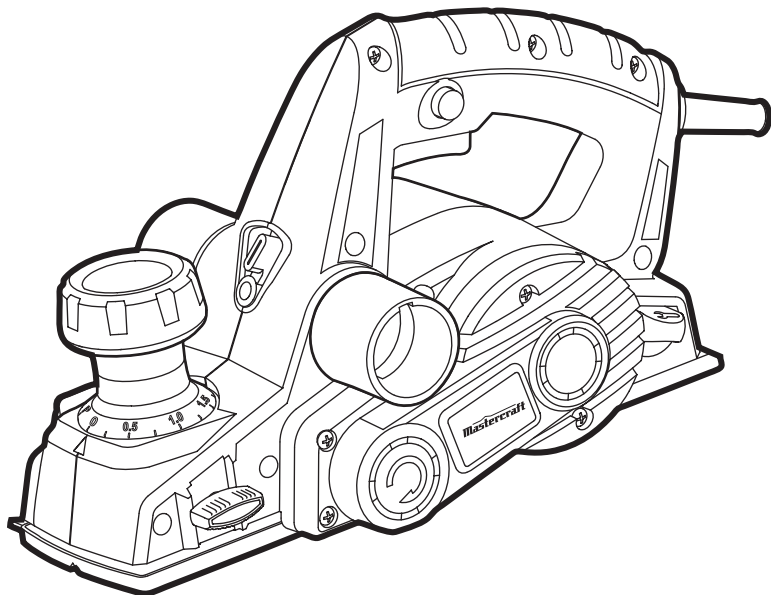
Imported by

Mastercraft Canada Toronto, Canada M4S 2B8

model no. 054-6602-4

Mastercraft®
IMD

PLANER



IMPORTANT:

Read and understand this instruction manual thoroughly before using the product.

INSTRUCTION MANUAL

TABLE OF CONTENTS

Technical Specifications	4
Safety Guidelines	5–8
Key Parts Diagram	9–10
Important Information	11–12
Assembly Instructions	13–14
Operating Instructions	15–17
Maintenance	18–20
Troubleshooting	21
Part list	22–23
Warranty	24–25

NOTE: If any parts are missing or damaged, or if you have any questions, please call our toll-free helpline at 1-800-689-9928

**SAVE THESE INSTRUCTIONS**

- This manual contains important safety and operating instructions. Read all instructions and follow them with use of this product.

TECHNICAL SPECIFICATIONS

Input	6.0 A
Rating	120V~, 60Hz
No load speed	17,000 RPM
Planing capacity:	
Planing width	3 1/4" (8.2 cm)
Planing depth	0–1/8" (0–3.0 mm)
Rabbetting depth	1/2" (12.7 mm)
Tool weight	6 lb 3 oz (2.8 kg)
Level of vibration a_h ($k=1.5m/s^2$)	$a_h=2.3 m/s^2$

RULES FOR SAFE OPERATION



WARNING!

Safety symbols in this Instruction Manual are used to flag possible dangers. The safety symbols and their explanations require your full understanding. The safety warnings do not, by themselves, eliminate any danger, nor are they substitutes for proper accident prevention measures.



WARNING!

This Safety Alert Symbol indicates caution, warning, or danger. Failure to obey a safety warning can result in serious injury to yourself or others. To reduce the risk of injury, fire, or electric shock, always follow the safety precautions.

KNOW YOUR TOOL

To operate this tool, carefully read this Instruction Manual and all labels affixed to the Planer before using. Keep this manual available for future reference.

IMPORTANT

This tool should only be serviced by a qualified service technician. For more information, call the toll-free helpline at 1-800-689-9928.

READ ALL INSTRUCTIONS THOROUGHLY

SAVE THESE INSTRUCTIONS

SAFETY GUIDELINES FOR POWER TOOLS



WARNING!

Read all safety warnings and instructions. Failure to follow the warnings and instructions may result in electric shock, fire and/or serious injury.

SAVE ALL WARNINGS AND INSTRUCTIONS FOR FUTURE REFERENCE.

The term “power tool” in the warnings refers to your mains-operated (corded) power tool or battery-operated (cordless) power tool.

WORK AREA SAFETY

- **Keep work area clean and well lit.** Cluttered or dark areas invite accidents.
- **Do not operate power tools in explosive atmospheres, such as in the presence of flammable liquids, gases or dust.** Power tools create sparks, which may ignite the dust or fumes.
- **Keep children and bystanders away while operating a power tool.** Distractions can cause you to lose control.

ELECTRICAL SAFETY

- **Power tool plugs must match the outlet.** Never modify the plug in any way. Do not use any adapter plugs with earthed (grounded) power tools. Unmodified plugs and matching outlets will reduce risk of electric shock.
- **Avoid body contact with earthed or grounded surfaces such as pipes, radiators, ranges and refrigerators.** There is an increased risk of electric shock if your body is earthed or grounded.
- **Do not expose power tools to rain or wet conditions.** Water entering a power tool will increase the risk of electric shock.
- **Do not abuse the cord.** Never use the cord for carrying, pulling or unplugging the power tool. Keep the cord away from heat, oil, sharp edges or moving parts. Damaged or entangled cords increase the risk of electric shock.
- **When operating a power tool outdoors, use an extension cord suitable for outdoor use.** Use of a cord suitable for outdoor use reduces the risk of electric shock.
- **If operating a power tools in a damp location is unavoidable, use a ground-fault circuit interrupter (GFCI) protected supply.** Use of a GFCI reduces the risk of electric shock.

PERSONAL SAFETY

- **Stay alert, watch what you are doing and use common sense when operating a power tool.** Do not use a power tool while you are tired or under the influence of drugs, alcohol or medication. A moment of inattention while operating power tools may result in serious personal injury.
- **Use personal protective equipment.** Always wear eye protection. Protective equipment such as dust mask, non-skid safety shoes, hard hat, or hearing protection used for appropriate conditions will reduce personal injuries.
- **Prevent unintentional starting.** Ensure that the switch is in the off-position before connecting to power source or battery pack, picking up or carrying the tool. Carrying power tools with your finger on the switch or energising power tools that have the switch on invites accidents.
- **Remove any adjusting key or wrench before turning the power tool on.** A wrench or a key left attached to a rotating part of the power tool may result in personal injury.
- **Do not overreach. Keep proper footing and balance at all times.** This enables better control of the power tool in unexpected situations.
- **Dress properly. Do not wear loose clothing or jewellery. Keep your hair, clothing and gloves away from moving parts.** Loose clothes, jewellery or long hair can be caught in moving parts.
- **If devices are provided for the connection of dust extraction and collection facilities, ensure that these are connected and properly used.** Use of dust collection devices can reduce dust-related hazards.

POWER TOOL USE AND CARE

- **Do not force the power tool.** Use the correct power tool for your application. The correct power tool will do the job better and more safely at the rate for which it was designed.
- **Do not use the power tool if the switch does not turn it on and off.** Any power tool that cannot be controlled with the switch is dangerous and must be repaired.

- **Disconnect the plug from the power source and/or the battery pack from the power tool before making any adjustments, changing accessories, or storing power tools.** Such preventive safety measures reduce the risk of starting the power tool accidentally.
- **Store idle power tools out of the reach of children and do not allow persons unfamiliar with the power tool or these instructions to operate the power tool.** Power tools are dangerous in the hands of untrained users.
- **Maintain power tools.** Check for misalignment or binding of moving parts, breakage of parts and any other condition that may affect the power tool's operation. If damaged, have the power tool repaired before use. Many accidents are caused by poorly maintained power tools.
- **Keep cutting tools sharp and clean.** Properly maintained cutting tools with sharp cutting edges are less likely to bind and are easier to control;
- **Use the power tool, accessories, tool bits, etc. in accordance with these instructions, taking into account the working conditions and the work to be performed.** Use of the power tool for operations different from those intended could result in a hazardous situation.

SERVICE

- **Have your power tool serviced by a qualified repair person using only identical replacement parts.** This will ensure that the safety of the power tool is maintained.

SAFETY GUIDELINES FOR PLANER

- **Wait for the cutter to stop before setting the tool down.** An exposed, rotating cutter may engage the surface and result in possible loss of control and serious injury.
- **Hold the power tool by insulated gripping surfaces only, because the cutter may contact its own cord.** Cutting a “live” wire may make exposed metal parts of the power tool “live” and could give the operator an electric shock.
- **Use clamps or another practical way to secure and support the workpiece to a stable platform.** Holding the work by your hand or against the body leaves it unstable and may lead to loss of control.
- **The label on your tool may include the following symbols. The symbols and their definitions are as follows:**

V Volts


A Amperes

Hz Hertz

W Watts

min Minutes

 Alternating current

 Direct current

n_0 No-load speed



..... Class II Construction

.../min Revolutions or reciprocation per minute



..... Grounding terminal

BPM Beats per minute



..... WARNING – To reduce the risk of injury, user must read instruction manual.



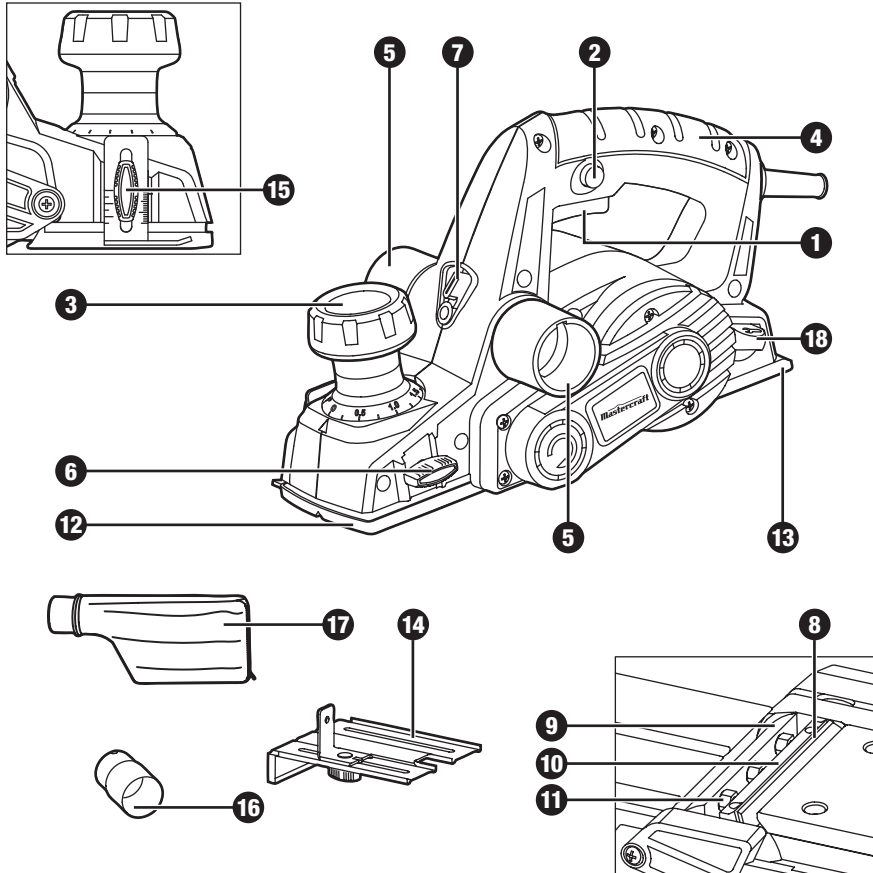
..... WARNING – To reduce the risk of injury always wear ear protection.

- **Always start the planer before blade is in contact with the workpiece and allow the blade to come to full speed before contacting the workpiece.** The tool can vibrate or chatter if the blade speed is too slow at beginning of the cut and can possibly kickback.
- **Check the workpiece for nails. If there are nails, either remove or set them well below intended finished surface.** If the planer blades strike objects like nails it may cause the tool to kickback and serious personal injury may result.
- **Unplug the planer before changing accessories.** Before plugging the tool in, check that the trigger lock is “OFF”. Accidental start-ups may occur if planer is plugged in while changing an accessory.
- **Always hold the tool firmly with both hands for maximum control.**
- **Never pull the plane backward over the workpiece.** Loss of control may occur.
- **Always wear ear and eye protection and a breathing mask.**

PACKAGE CONTENTS

Planer, edge guide, blade change wrench (installed on the planer), rabbetting depth scale, dust bag, vacuum adaptor and instruction manual.

KEY PARTS DIAGRAM



WARNING!

- Remove the planer from the package and examine it carefully. Do not discard the carton or any packaging material until all parts have been examined.

KEY PARTS DIAGRAM

No.	Part
1	On/off trigger switch
2	Lock-off button
3	Depth-adjustment knob
4	Handle
5	Dust/chip extraction port
6	Edge-guide attachment knob
7	Dust/chip extraction guide switch
8	Reversible blade
9	Blade drum

No.	Part
10	Clamping element
11	Clamping screw
12	Adjustable front base
13	Fixed rear base
14	Edge guide
15	Rabbetting depth stop
16	Vacuum adapter
17	Dust bag
18	Blade change wrench

IMPORTANT INFORMATION

Before attempting to use this tool, become familiar with all of its operating features and safety requirements. For optimum performance and safety, read the following operating instructions carefully before using.

DUST/CHIP EXTRACTION GUIDE SWITCH (fig 1)

Moving the switch to the left of the tool will cause chips to be discharged to the right; moving it to the right of tool causes chips to be discharged the left.

DUST/CHIP EXTRACTION

The planer is equipped with two dust/chip extraction ports, which may be used with a vacuum adapter or a dust bag to keep your work environment cleaner.

Firmly attach the vacuum adapter or dust bag to the extraction port. A workshop dust-extraction system or a household vacuum cleaner can be connected to the vacuum adapter for the efficient removal of dust and shavings.

The extraction port will fit 1-1/4" hoses.

DUST BAG

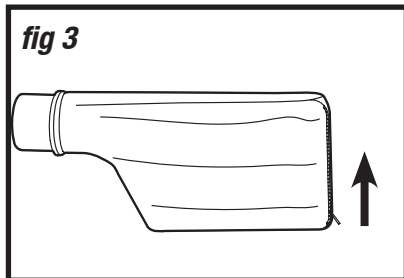
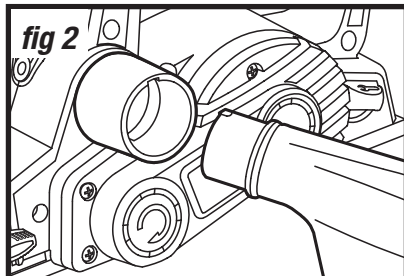
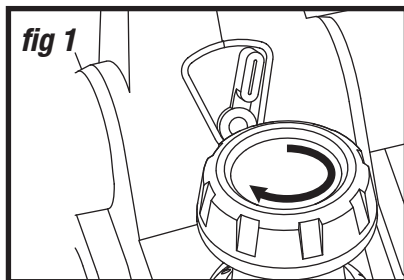
When planing, attach the dust bag to the dust/chip extraction port for smaller jobs.

In addition, wear a suitable dust mask, as there may be some residual airborne dust particles in the area.

To attach the dust bag (fig 2): Align the raised emboss on the dust bag with the groove in the extraction port, and slide the dust bag into the port. Then rotate the dust bag towards the front of tool to lock it in place.

Empty the dust bag: Empty the dust bag by unzipping the bag (fig 3) and then gently tap the bag to remove the dust.

For a more thorough cleaning of the dust bag, slip the bag off of the frame and turn bag inside out. Use a soft brush to brush the dust off of the lining.



WARNING!

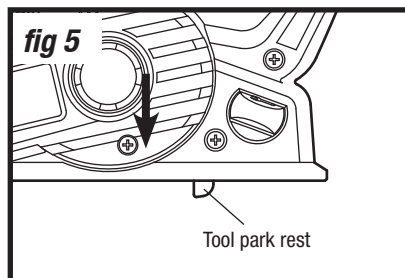
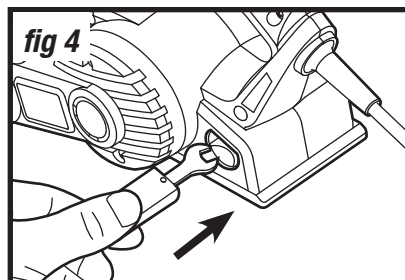
- Do not allow familiarity with the planer to cause a lack of alertness. A fraction of a second of carelessness is enough to cause severe injury.
- Always ensure that the tool is switched OFF and unplugged from the power supply before assembling parts, making adjustments, installing or removing planer blades, cleaning, or when it is not in use. Disconnecting the planer will prevent accidental starting, which could cause serious personal injury.

BLADE CHANGE WRENCH STORAGE AREA (fig 4)

Your tool is equipped with a blade wrench that is conveniently located in the handle base where it is always handy and unlikely to get lost or misplaced.

TOOL PARK REST

The park rest swings down to help keep the blade from coming in contact with the work surface when the planer is not in use (fig 5). The tool park rest was designed to swing up and out of the way by itself when the back of the planer crosses the leading edge of the workpiece.



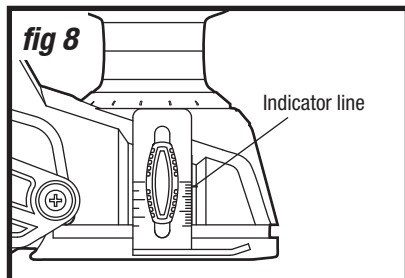
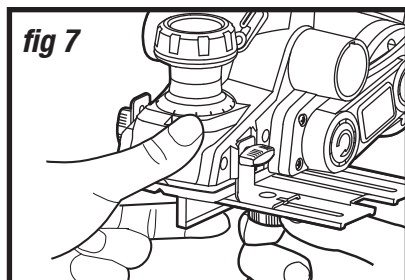
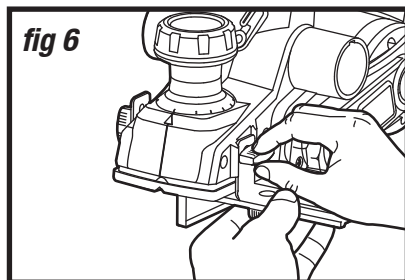
ASSEMBLY INSTRUCTIONS

EDGE GUIDE

1. To attach the edge guide, remove the edge-guide attachment knob and slide the edge guide into the planer.
2. Replace the edge-guide attachment knob and firmly tighten it (fig 6).
3. Loosen the locking nut and slide the edge guide to the desired position. Securely tighten the locking nut (fig 7).

RABBETTING DEPTH STOP (fig 8)

The rabbetting depth stop allows the user to set any rabbetting depth from 0 to 12.7 mm. For best results, it is important that the blade be properly aligned with the front base. The width of the rabbet is controlled by the edge guide. The maximum cutting width is 3-1/4", and the final depth is achieved by repeating the planing procedure until the rabbetting depth stop contacts the workpiece.



CAUTION!

- Always ensure that the tool is switched OFF and unplugged from the power supply before making any adjustments and attaching accessories.

SETTING THE RABBETTING DEPTH

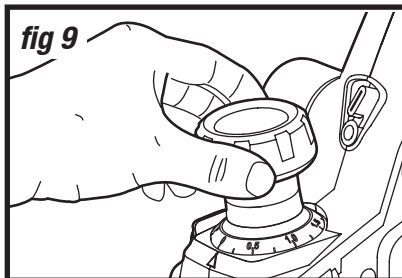
1. Loosen rabbetting depth-stop locking nut and set the desired rabbet depth by aligning the depth scale on the rabbetting depth stop with the indicator line.
2. Securely tighten locking nut.

ADJUSTING THE DEPTH OF CUT (fig 9)

The proper cutting depth should be determined according to the hardness, gumminess or moisture content of the material being cut, as well as the feed rate, and is largely a matter of experience. Rotate the depth adjustment knob clockwise for a deeper cut and counterclockwise for a shallower cut.

The numbers on the ring under the depth adjustment knob indicate the depth of cut, e.g., when 1 mm is next to the pointer on the front of the planer, the depth of cut is approximately 1 mm.

If it is necessary to accurately determine the depth of cut, plane a scrap piece of wood, measure the difference in thickness and adjust the setting.



WARNING!

- Always ensure that the tool is switched OFF and unplugged from the power supply before making adjustments.

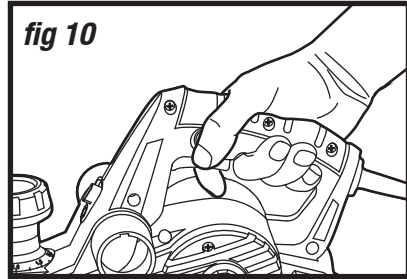
CAUTION!

- Always set the depth adjustment knob at the “P” position when the tool is not in use. This retracts the planer blade, allowing the power tool to be placed down without the danger of causing damage to the workpiece or the planer blade.

OPERATING INSTRUCTIONS

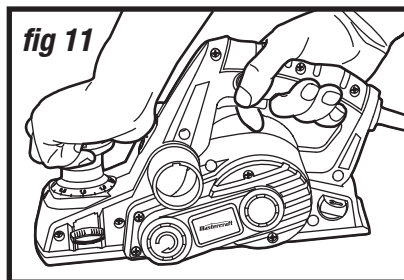
SWITCHING ON AND OFF (*fig 10*)

1. Connect the power cord of your planer to a standard household power outlet.
2. To turn the planer ON, hold the tool with both hands, push in the lock-off button first, and then press the on/off trigger switch.
3. To turn the planer OFF, release the trigger switch.



PLANING (fig 11)

1. Unplug the planer and adjust the edge guide and cutting depth as appropriate.
2. Clamp the workpiece securely on a workbench,
3. Connect the power cord of your planer to a standard household power outlet.
4. While standing comfortably, hold the planer firmly with both hands.
5. Place the front base of the planer against the workpiece surface without the blades making any contact with the workpiece.
6. Switch on the tool and guide the tool with even feed over the surface to be planed.
7. Move the tool gently forward, applying pressure on the front of the tool at the beginning of the planing pass and pressure at the rear of the tool at the end of the planning pass.
8. Push the planer beyond the edge of the workpiece without tilting it downwards.



The rate of planing and the depth of cut determine the quality of the cut. For rough cutting, you can increase the depth of cut. To achieve a smooth cut, you will need to reduce the depth of cut and advance the planer slowly across the workpiece.

The proper feed rate will depend on the type of material being cut and the depth of the cut. When planing hard materials (e.g., hardwood), as well as when utilizing the maximum planer width, set only low planing depths and reduce the planer feed as required.

Practice first on a scrap piece of material to gauge the correct feed rate and the cut dimensions.

NOTICE:

- Planing is easier if you incline the workpiece slightly away from you so that you plane “downhill”.
- Moving the planer too quickly may cause a poor quality of cut and can damage the blades or the motor. Moving the planer too slowly may burn or mar the workpiece.

**WARNING!**

- Hold the tool with both hands while starting the tool, since torque from the motor can cause the tool to twist.

CAUTION!

- Always use two hands when holding the planer.
- Wherever possible, clamp the workpiece to a workbench or clamping table.

PLANING WITH THE EDGE GUIDE

The edge guide can be used to control the width of the cut or for simply providing added stability and protection when cutting materials that are up to 3-1/4" (82 mm) wide (fig 12).

CHAMFERING (fig 13)

The "V" groove in the front base allows quick and easy chamfering of workpiece edges.

1. Place the "V" groove on the front base over the edge to be chamfered. Be sure the blades are not touching the workpiece.
2. Position the "V" groove absolutely flat on the edge to be beveled.
3. Grasp the tool firmly with both hands, turn the tool on and push the planer forward with steady pressure on the front base.

fig 12

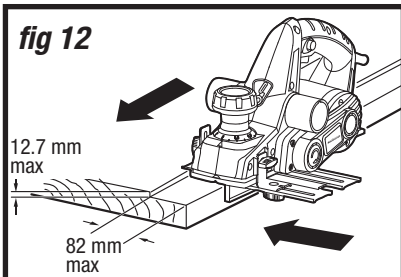
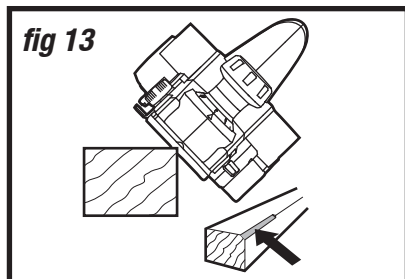


fig 13



WARNING!

- Hold the tool with both hands while starting the tool, since torque from the motor can cause the tool to twist.

MAINTENANCE

BEFORE EACH USE

1. Inspect the planer, the trigger switch, the cord and the accessories for damage.
2. Check for damaged, missing, or worn parts.
3. Check for loose screws, misalignment or binding of moving parts, or any other condition that may affect the operation.
4. If abnormal vibration or noise occurs, turn the tool off immediately and have the problem corrected before further use. Unplug the tool from power source before cleaning or performing any maintenance.
5. Using compressed air may be the most effective cleaning method. Always wear safety goggles when cleaning tools with compressed air.

PLANER BLADES

The planer blades have two cutting edges and may be reversed. When both cutting edges are dull, the planer blade must be replaced.

The planer blades may not be re-sharpened. Do not attempt to sharpen or use re-sharpened blades of any kind.

Use only blades designated for use with this model, because other blades will cause vibration, decrease performance and may not clamp securely in the blade holder.



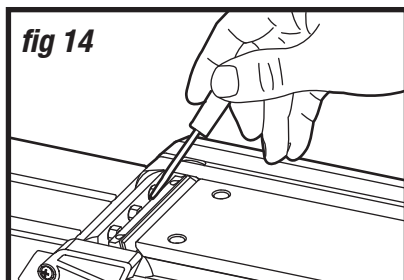
WARNING!

- Do not allow brake fluids, gasoline and petroleum-based products, penetrating oil, etc. come into contact with plastic parts. These substances contain chemicals that can damage, weaken, or destroy plastic.
- When servicing, use only identical replacement parts. The use of any other parts may create a hazard or cause damage to the product.
- Use only accessories that are recommended for this planer by the manufacturer. Accessories that may be suitable for one tool may become hazardous when used with another tool.
- Maintain tools with care. Keep cutting tools sharp and clean. Properly maintained tools with sharp cutting edges are less likely to bind and are easier to control.
- To ensure safety and reliability, all repairs should be performed by a qualified service technician.
- Be cautious when replacing the planer blades. Do not grasp the planer blades by the cutting edges. Injury may result due to the sharp cutting edges of the planer blades.
- Always ensure that the tool is switched OFF and unplugged from the power supply before installing or removing blades.

REPLACING THE PLANER BLADES

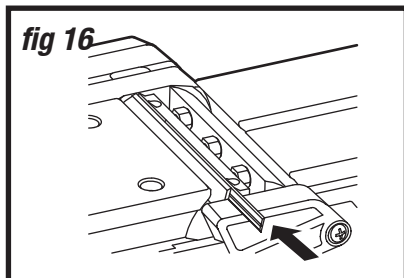
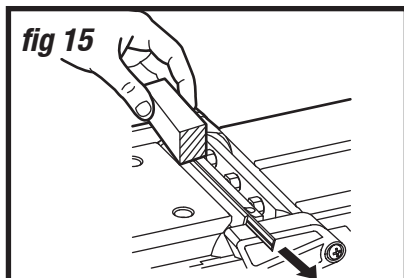
REMOVING THE OLD PLANER BLADES

1. Disconnect the plug from the power source.
2. Place the planer upside down on a flat surface.
3. Loosen the three clamping screws with the wrench that is provided (fig 14).
4. Push the blade sideways out of the blade drum. A piece of wood may be used for this purpose (fig 15).



INSTALLING NEW PLANER BLADES

1. Disconnect the plug from power source.
2. Place the planer upside down on a flat surface.
3. Clean all surfaces before reinstalling the new blade, as this will ensure an accurate blade setting and proper tool performance.
4. Slide a new sharp blade into the blade holder of the clamping element (fig 16). The blade groove must engage with the blade holder.
5. Tighten the three clamping screws again with the wrench (provided).



NOTICE: Your planing surface will end up rough and uneven unless the blades are set properly and securely. The blades must be mounted so that the cutting edge is absolutely level relative to the surface of the front and rear base.



CAUTION!

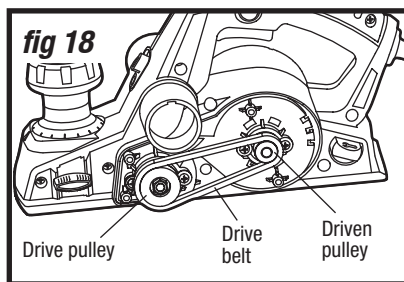
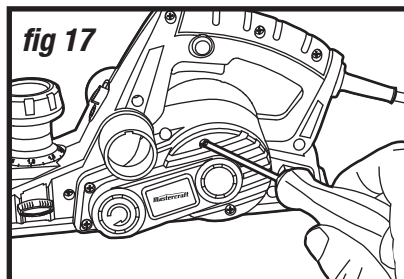
- When installing blades, first clean out all chips and/or foreign matter adhering to the blade drum and the clamping element. Use blades of the same dimensions and weight, or else the drum will oscillate and vibrate, causing poor planing action and tool breakdown. Tighten the clamping screws carefully when attaching the blades to the planer. A loose clamping screw could be extremely dangerous. Regularly check and ensure that the clamping screws are securely tightened.

DRIVE BELT

The drive belt is a normal maintenance part and should be inspected periodically for wear. If the drive belt shows signs of drying out, cracking or tearing, it should be replaced. If the drive belt will not track properly or comes off the pulleys, it should be replaced.

INSTALLING NEW DRIVE BELT

1. Disconnect the plug from the power source.
2. Loosen the four screws with a Philips screwdriver and remove the drive belt cover (fig 17).
3. Cut and remove the worn drive belt. Before installing the new drive belt, clean both pulleys thoroughly (fig 18).
4. Place the new drive belt onto the drive pulley then rotate it clockwise while pushing the belt onto the driven pulley.
5. Reinstall the drive belt cover and securely tighten screws.



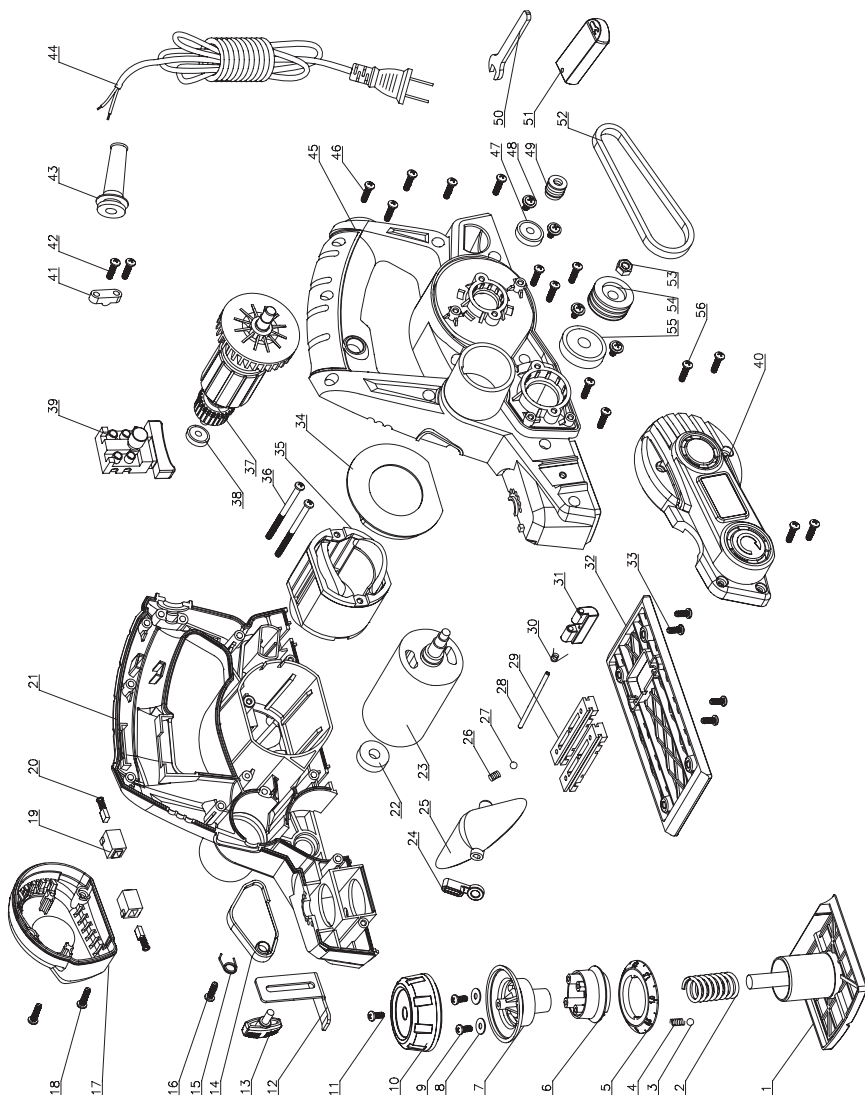
TROUBLESHOOTING

Problem	Possible Causes	Solution
The motor does not start	1. The tool is not connected to a power source	1. Connect the tool to a power source
	2. The lock-off button is not depressed before squeezing the on/off trigger switch	2. Press down the lock-off button and hold it, then depress the trigger switch to turn on the planer.
Planer does not plane properly	1. Blades are dull	1. Change the blades
	2. Blades are not installed correctly	2. Install the blades correctly (see Installing new planer blades)
The motor is overheating	Cooling vents may be obstructed by dust or other obstacles	Clean and clear vents. Do not cover with hand during operation

If any parts are missing or damaged, or if you have any questions, please call the Toll-free Helpline, at 1-800-689-9928.

EXPLODED VIEW

PART LIST



No.	Part No.	Description
1	054660201	Front Sole Plate
2	054660202	Big Spring
3	054660203	Steel Ball
4	054660204	Spring
5	054660205	Scale
6	054660206	Scale Support
7	054660207	Knob Base
8	054660208	Washer
9	054660209	Screw
10	054660210	Knob Cover
11	054660211	Screw
12	054660212	Depth Fence
13	054660213	Knob
14	054660214	Blade Guard
15	054660215	Spring
16	054660216	Screw
17	054660217	Motor Cover
18	054660218	Screw
19	054660219	Brush Holder
20	054660220	Brush
21	054660221	Right Housing
22	054660222	Bearing
23	054660223	Blade Body Assembly
24	054660224	Spanner
25	054660225	Switching Plate
26	054660226	Spring
27	054660227	Steel Ball
28	054660228	Pin

No.	Part No.	Description
29	054660229	Backplane Positioning Bar
30	054660230	Spring
31	054660231	Support
32	054660232	Backplane
33	054660233	Screw
34	054660234	Fari Baffel
35	054660235	Stator
36	054660236	Screw
37	054660237	Rotor
38	054660238	Bearing
39	054660239	Switch
40	054660240	Belt Cover
41	054660241	Cord Clamp
42	054660242	Screw
43	054660243	Cord Guard
44	054660244	Cord Set
45	054660245	Left Housing
46	054660246	Screw
47	054660247	Bearing
48	054660248	Screw
49	054660249	Driven Doller
50	054660250	Spanner
51	054660251	Canister
52	054660252	Belt
53	054660253	Nut
54	054660254	Driving
55	054660255	Bearing
56	054660256	Screw

If any parts are missing or damaged, or if you have any questions, please call the Toll-free Helpline, at 1-800-689-9928.



This Mastercraft product is guaranteed for a period of **3 years from the date of original retail purchase** against defects in workmanship and materials, except for the following components:

- a) Component A: Batteries, chargers and carrying case, which are guaranteed for a period of 2 years from the date of original retail purchase against defects in workmanship and materials;
- b) Component B: Accessories, which are guaranteed for a period of 1-year from the date of original retail purchase against defects in workmanship and materials.

Subject to the conditions and limitations described below, this product, if returned to us with proof of purchase within the stated warranty period and if covered under this warranty, will be repaired or replaced (with the same model, or one of equal value or specification), at our option. We will bear the cost of any repair or replacement and any costs of labour relating thereto.

These warranties are subject to the following conditions and limitations:

- a) a bill of sale verifying the purchase and purchase date must be provided;
- b) this warranty will not apply to any product or part thereof which is worn or broken or which has become inoperative due to abuse, misuse, accidental damage, neglect or lack of proper installation, operation or maintenance (as outlined in the applicable owner's manual or operating instructions) or which is being used for industrial, professional, commercial or rental purposes;
- c) this warranty will not apply to normal wear and tear or to expendable parts or accessories that may be supplied with the product that are expected to become inoperative or unusable after a seasonable period of use;
- d) this warranty will not apply to routine maintenance and consumable items such as, but not limited to, fuel, lubricants, vacuum bags, blades, belts, sandpaper, bits, fluids, tune-ups or adjustments;
- e) this warranty will not apply where damage is caused by repairs made or attempted by others (i.e. persons not authorized by the manufacturer);
- f) this warranty will not apply to any product that was sold to the original purchaser as a reconditioned or refurbished product (unless otherwise specified in writing);
- g) this warranty will not apply to any product or part thereof if any part from another manufacturer is installed therein or any repairs or alterations have been made or attempted by unauthorized persons;
- h) this warranty will not apply to normal deterioration of the exterior finish, such as, but not limited to, scratches, dents, paint chips, or to any corrosion or discolouring by heat, abrasive and chemical cleaners; and
- i) this warranty will not apply to component parts sold by and identified as the product of another company, which shall be covered under the product manufacturer's warranty, if any.

Additional Limitations

This warranty applies only to the original purchaser and may not be transferred. Neither the retailer nor the manufacturer shall be liable for any other expense, loss or damage, including, without limitation, any indirect, incidental, consequential or exemplary damages arising in connection with the sale, use or inability to use this product.

Notice to Consumer

This warranty gives you specific legal rights, and you may have other rights, which may vary from province to province. The provisions contained in this warranty are not intended to limit, modify, take away from, disclaim or exclude any statutory warranties set forth in any applicable provincial or federal legislation.

IMPORTED BY MASTERCRAFT CANADA TORONTO, CANADA M4S 2B8