

NOMA[®]

LIFELIKE TWINKLE TREE

Instruction Manual
For indoor use only
Retain carton for storage purposes

model no. 151-5605-2 | Toll-free number : 1-866-827-4985

IMPORTANT: Please read this manual carefully before assembly and save it for reference.

INSTRUCTION MANUAL

Thank you for purchasing this Lifelike Twinkle Tree. This tree assembles in less than one minute and is decorated with energy-saving LED light sets. For your convenience, it is equipped with a foot pedal switch for easy illumination and changing functions.

This 6'5" (2 m) Lifelike Twinkle Tree is pre-strung with 400 LED lights.

CARTON INCLUDES:

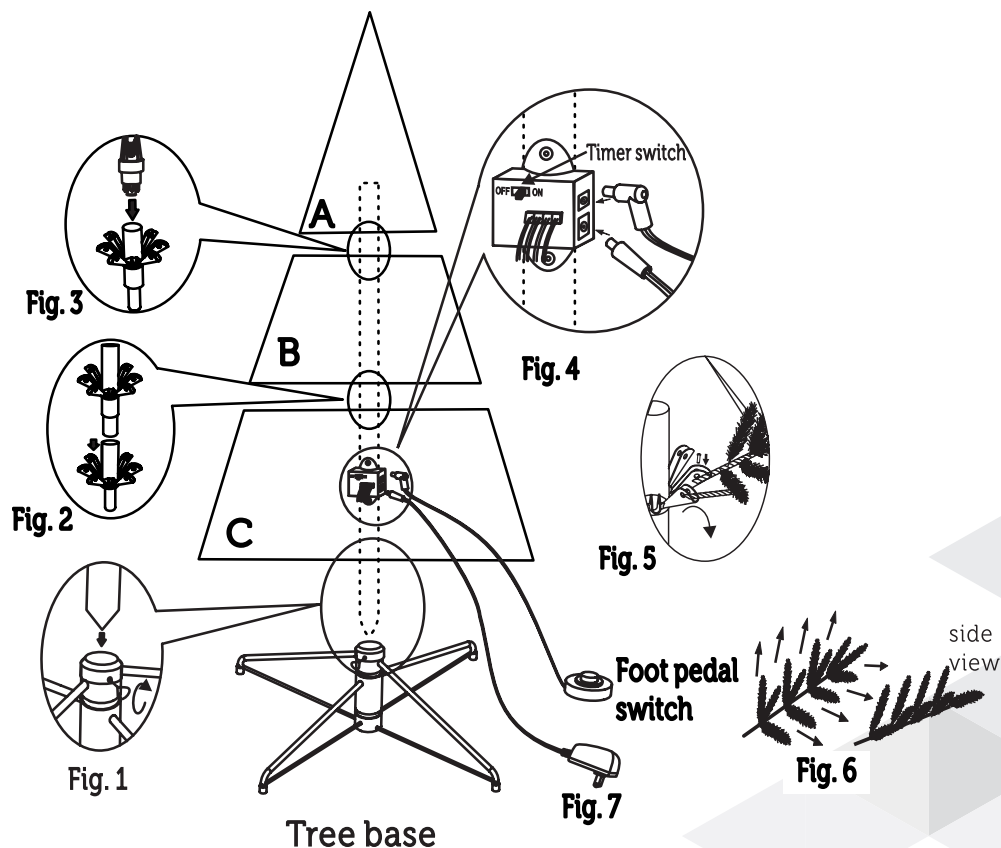
- 3 pre-lighted tree sections (A - Top, B - Middle, C - Bottom)
- 1 tree base
- 1 screw for tree base
- 1 foot pedal switch
- 1 adaptor
- 10 spare LED bulbs

ASSEMBLY:

Note: Before you start to assemble your tree, please choose a location near an electrical wall outlet. Place the tree stand on a level surface.

Please remove protective covers from the base of the pole from each section.

1. Unfold the tree base and insert the screw into the hole.
2. Carefully insert bottom section (C) of tree into tree base and tighten the screw (see Fig. 1).



3. Insert the middle section (B) of the tree into the bottom section (C). Rotate the middle section (B) right or left until it falls into place, then insert vertically and tightly into the bottom section (C) to ensure proper circuit connection (see Fig. 2).
4. Insert the top section (A) into the middle section (B). Rotate the top section (A) right or left until it falls into place, then insert vertically and tightly into the middle section (B) to ensure proper circuit connection (see Fig. 3).
5. Insert the provided foot pedal switch and adaptor separately into the holes of the box fixed on the tree bottom (C) according to the magnified drawing (see Fig. 4). There is a timer switch on the box (see Fig. 4). Turn on the timer switch; the lights will automatically be ON for 6 hours and be OFF for 18 hours. This cycle will occur every day unless the timer switch is "Off".
6. Allow the branches to fall into place or gently pull branches up and out. When adjusting branches be sure that all wires are free of branch hinges (see Fig. 5).
7. Shape the branches. Starting with tips closest to the pole, shape one tip to the right, one to the left and one along the centre of the main stem. Repeat pattern for each branch (see Fig. 6).
8. Plug the well-connected adaptor into electric outlet (see Fig. 7). Please note this tree comes with a foot pedal switch for easy illumination and changing functions. This tree is pattern-changing. The 5 lighting options available are, Steady Warm White, Slow Twinkle, Elegant Twinkle, Dazzling Twinkle and Stroke Twinkle. These functions can be changed by using the foot pedal switch.

TROUBLESHOOTING:

If any lights do not work on your pre-lighted tree, please check the following:

1. If entire tree or a section of the tree does not light:
 - a) Make sure the adaptor plug is securely inserted into a working electrical outlet.
 - b) Make sure the foot pedal switch and adaptor are well connected to the bottom section (C).
2. If a strand of lights still does not work:
 - a) Check that all bulbs are tightly fitted inside the sockets and that no bulbs are broken or missing. Replace any broken or missing bulbs with replacement bulbs provided (see **Bulb Replacement** below).
 - b) Check that each section of the tree is well connected.

CAUTION! - ALWAYS UNPLUG YOUR TREE FROM ITS POWER SOURCE BEFORE ATTEMPTING BULB REPLACEMENT.

IMPORTANT SAFETY INSTRUCTIONS

a) READ AND FOLLOW ALL SAFETY INSTRUCTIONS.

- b) Do not use seasonal products outdoors unless marked suitable for indoor and outdoor use. When products are used in outdoor applications, connect the product to a Ground Fault Circuit Interrupting (GFCI) outlet. If one is not provided, contact a qualified electrician for proper installation.
- c) This seasonal product is not intended for permanent installation or use.
- d) Do not mount or place near gas or electric heaters, fireplace, candles, or other similar sources of heat.
- e) Do not secure the wiring of the product with staples or nails, or place on sharp hooks or nails.
- f) Do not let bulbs rest on the supply cord or on any wire.
- g) Unplug the product when leaving the house, when retiring for the night, or if left unattended.
- h) This is an electrical product-not a toy! To avoid risk of fire, burns, personal injury, and electric shock it should not be played with or placed where small children can reach it.
 - i) Do not use this product for anything other than its intended use.
 - j) Do not hang ornaments or other objects from cord, wire, or light string.
 - k) Do not close doors or windows on the product or extension cords as this may damage the wire insulation.
 - l) Do not cover the product with cloth, paper, or any material not part of the product when in use.
- m) This product is equipped with push-in type bulbs. Do not twist bulbs.
- n) Read and follow all instructions that are on the product or provided with the product.

O) SAVE THESE INSTRUCTIONS

USER SERVICING INSTRUCTIONS

BULB REPLACEMENT:

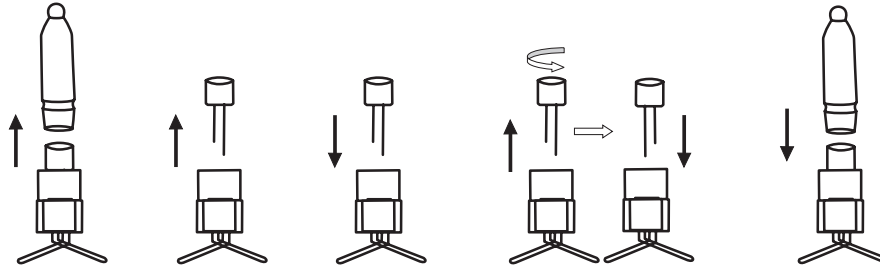
This product contains two different lamps, so there are two ways to replace the lamps.

Replacing the low-voltage lamps

1. Grasp plug and remove from its power source.
2. Remove the reflector of the bulb.
3. Pull bulb straight out of socket. Do not twist bulbs.

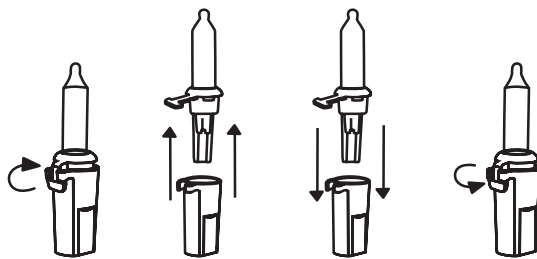


4. Replace burned-out bulb with 3 V, 0.06 W LED bulb ONLY. Directly insert the LED bulb into the lampholder.
5. If the bulb doesn't light up, change the LED bulb's direction to insert into the lampholder (replacement bulbs are provided).
6. Insert the reflector into the bulb.



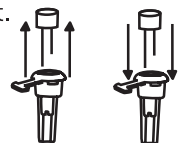
Replacing the lamps

1. Grasp plug and remove from its power source.
2. Unlock the lamp lock on the socket of the bulb.
3. Pull bulb AND plastic base straight out of socket. Do not twist bulbs while you are removing them.
4. Replace burnt out bulb with 3.0 V, 0.06 W LED bulb ONLY. (Additional bulbs are included for your convenience.)
5. Relock the lamp lock on the socket of the bulb.



If the new lamp base does not fit in lampholder, follow these steps:

- a) Remove the base of burned-out lamp by straightening lamp leads and gently pull lamp out.
- b) Thread leads of new lamp through holes in old base with one lead in each hole.
- c) After lamp is fully inserted into base, bend each lead up, like other lamps in the light set so that the leads will touch the contacts inside the lampholder.



STORAGE: Disassembled tree can be stored in its original box. Store tree in a cool dry place where the temperature does not exceed 100°F (38°C)

Made in China

Imported by

Noma Canada, Toronto, Canada M4S 2B8

Limited 1-year Warranty

This Noma product carries a one (1) year warranty against defects in workmanship and materials. Noma Canada agrees to replace a defective product, within the stated warranty period, when returned to the place of purchase with **proof of purchase**. This product is not guaranteed against wear or breakage due to misuse and/or abuse.

CAN ICES-3(B)/NMB-3(B)