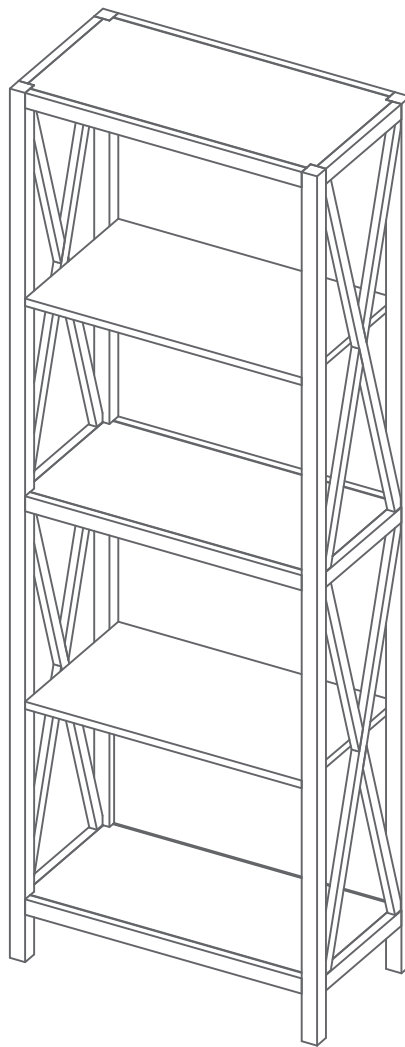


CANVAS^{TM/MC}

XAVIER BOOKCASE

MODEL NO. 068-7588-0



ASSEMBLY INSTRUCTIONS

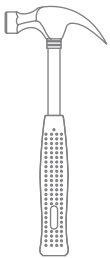
IMPORTANT: Please read and understand this manual before any assembly. Before beginning assembly of product, make sure all parts are present. Compare parts with packaging contents list. If any part is missing, or if you have any questions, contact the service centre at 1-888-670-6684 (toll-free).

Made in China

Imported by
Trileaf Distribution Trifeuil Toronto, Canada M4S 2B8

Table of Contents	3
Parts List	4
Assembly	6
Warranty	10

Needed for assembly:

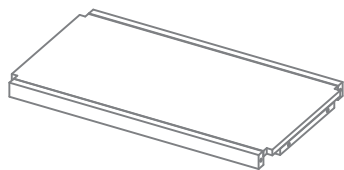


Hammer

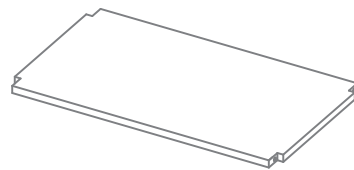


Screwdriver

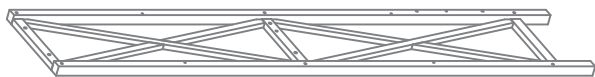
IMPORTANT: Retain for future reference, and read carefully.

4 Toll-free: 1-888-670-6684 | model no. 068-7588-0**1**

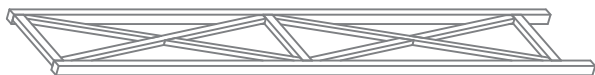
Top panel - 2

7

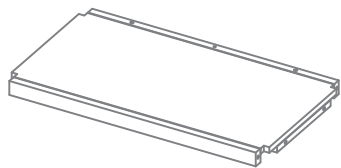
Upper shelf - 1

2

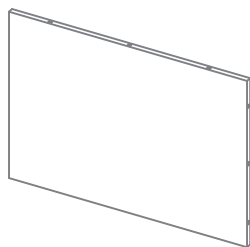
Left side panel - 1

3

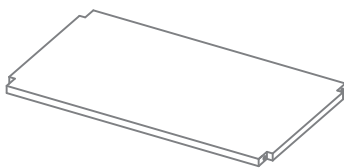
Right side panel - 1

4

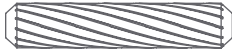
Bottom panel - 1

5

Back panel - 1

6

Lower shelf - 1

**A**

Shown at actual size

Wooden dowel - **20****B**

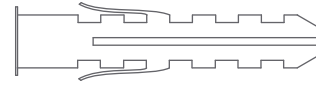
Shown at actual size

Cam bolt - **12****H**

Shown at actual size

Pan head screw - **1****C**

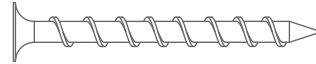
Shown at actual size

Cam - **12****I**

Shown at actual size

Wall anchor - **1****D**

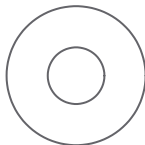
Shown at actual size

Hex bolt - **12****J**

Shown at actual size

Wall screw - **1****E**

Shown at actual size

Lock washer - **12****K**Wall strap - **1****F**

Shown at actual size

Washer - **12****G**Hex wrench - **1**



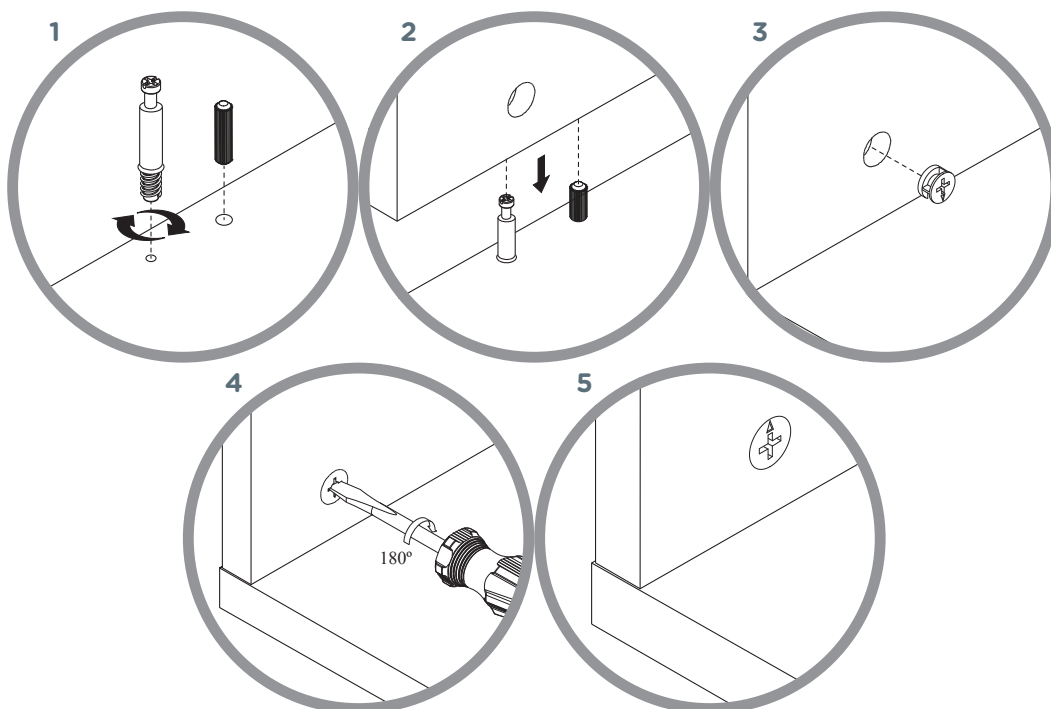
Warning! To reduce the risk of serious injury, read the following safety instructions before assembly.

- Read each section carefully before starting. It is very important that each step is performed in the correct order. If these steps are not followed in sequence, assembly difficulties will occur.
- Make sure all parts are included. Most board parts are labelled or stamped on the raw edge.
- Work in spacious area, preferably on a carpet, near the place the unit will be located.
- Do not use power tools to assemble your furniture. Power tools may strip or damage the parts.

HELPFUL HINTS

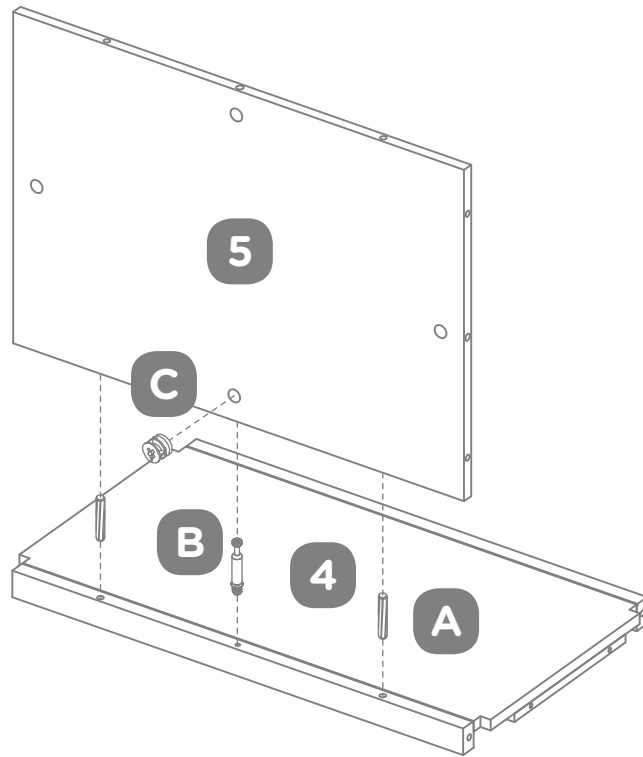
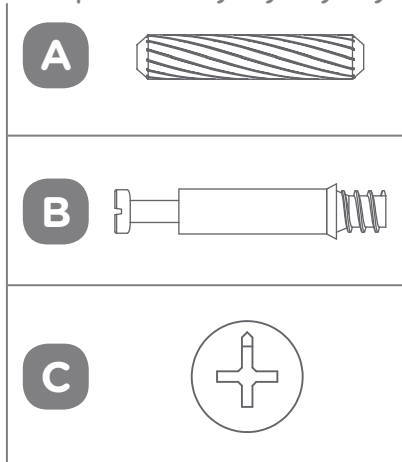
- Identify, sort and count the parts before beginning assembly.
- Compression dowels should be tapped in with a rubber mallet.
- Slides have a lip on the right side only.
- Back panels provide stability and support. Unit may collapse without the back panel installed.
- Clean the product with your choice of furniture polish and a soft cloth. DO NOT USE harsh chemicals or abrasive cleaners.
- Move your new furniture carefully. Two people are needed to lift and carry the unit to its new location.
- Never push or drag your furniture (especially on a carpet).

Follow these steps in order to assemble your furniture using the cam lock system.

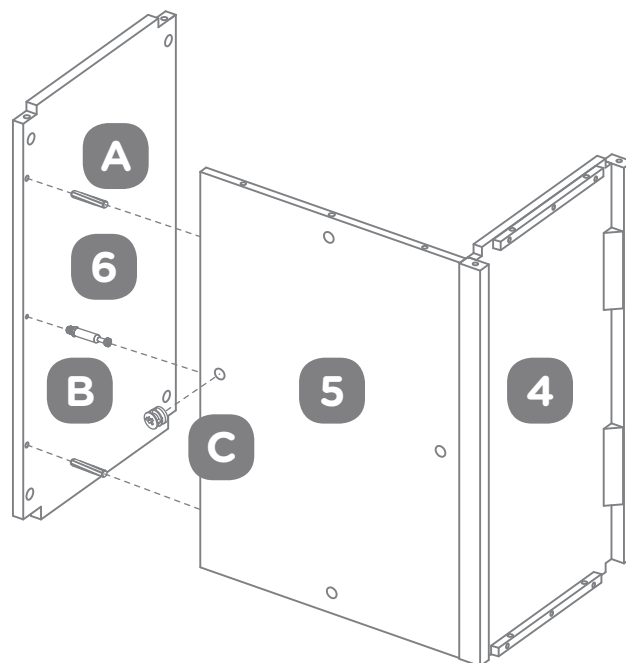
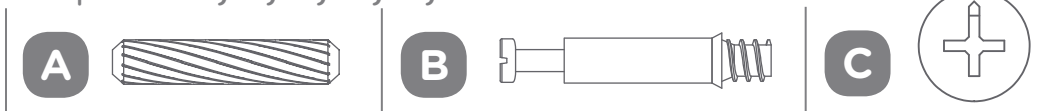


Step 1

Requires 4, 5, A, B, C

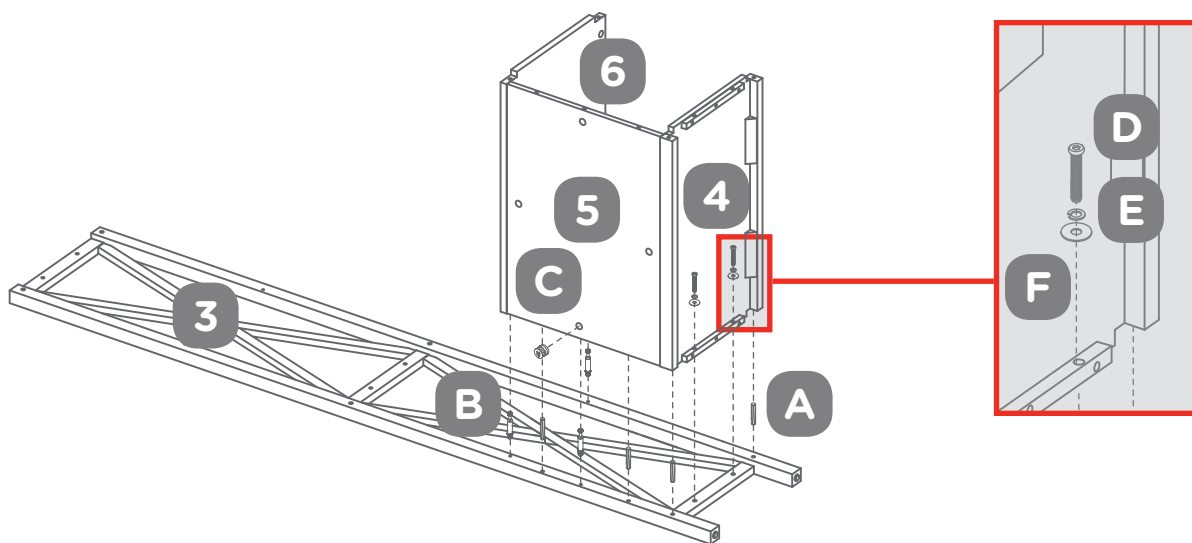
**Step 2**

Requires 4, 5, 6, A, B, C



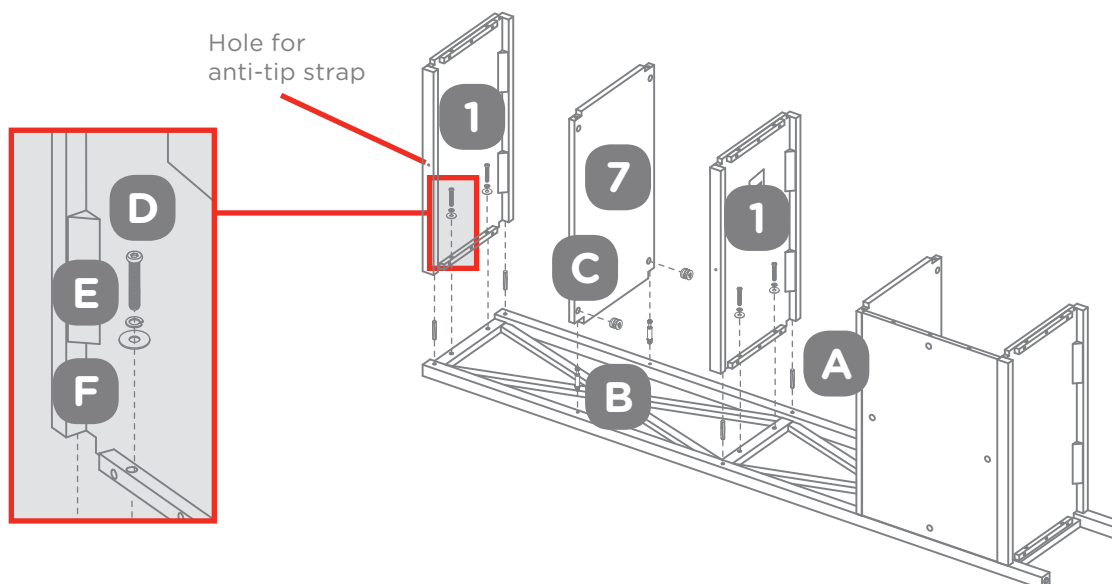
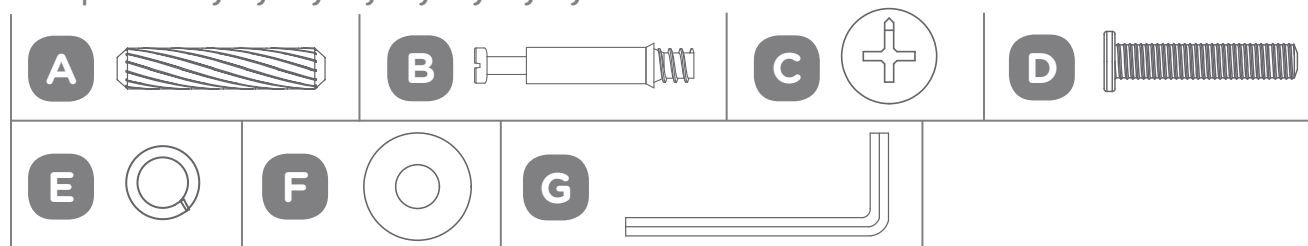
Step 3

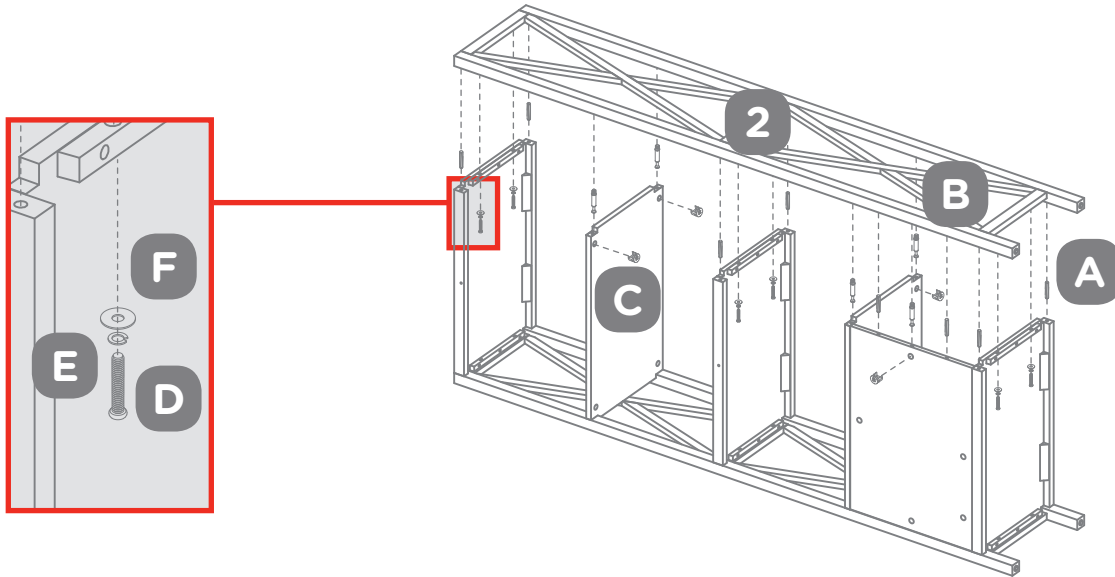
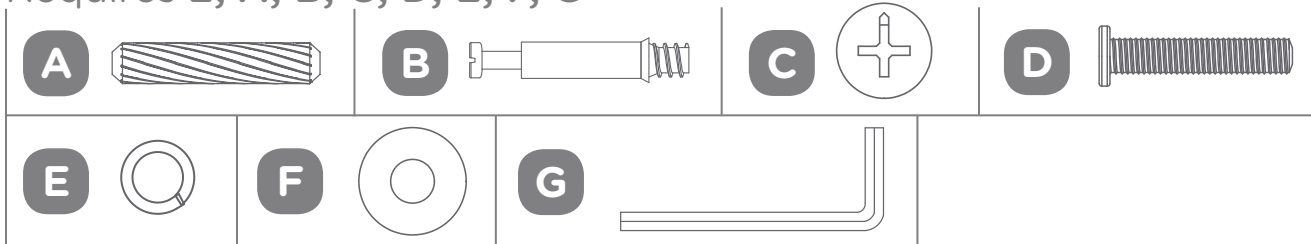
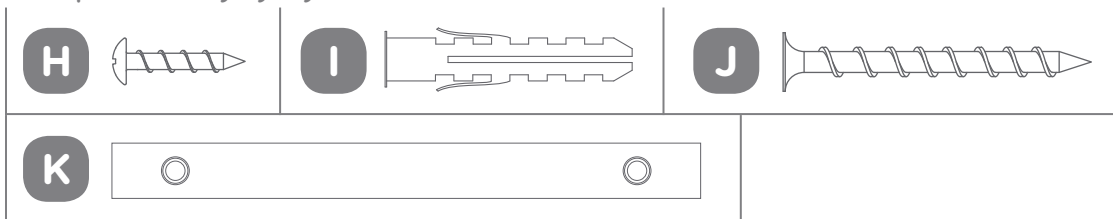
Requires 3, 4, 5, 6, A, B, C, D, E, F, G



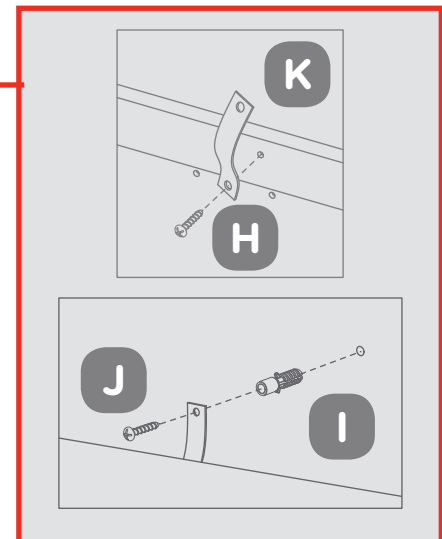
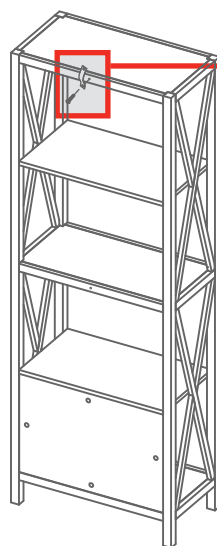
Step 4

Requires 1, 7, A, B, C, D, E, F, G



Step 5Requires **2, A, B, C, D, E, F, G****Step 6**Requires **H, I, J, K**

Attach wall strap (**K**) to back of product with pan-head screw (**H**). Drill a 1/4" (6.4 mm) diameter hole in the wallboard. Tap the wall anchor (**I**) into the hole until it is flush. Secure wall strap (**K**) with wall screw (**J**).



This unit must be anchored to a stud or wall, as shown. Failure to do so could cause severe injury.

! WARNING

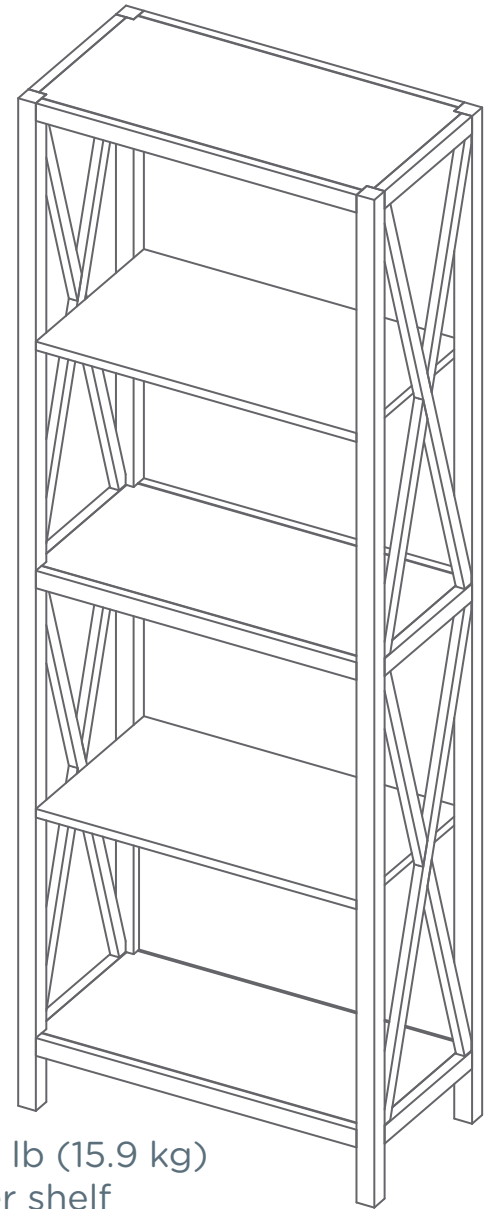
Serious or fatal crushing injuries can occur from furniture tip-over. To help prevent tip-over:

- Place heaviest items on the lowest shelves or in the lowest drawers and as far back as possible.
- Unless specifically designed to accommodate, do not set TVs or other heavy objects on top of this product.
- Never allow children to climb or hang on drawers, doors, or shelves.
- Use the wall strap (tip-over restraint) to secure the furniture to the wall.

Use of tip-over restraints may only reduce, but not eliminate, the risk of tip-over.

WEIGHT LIMITS

This unit has been designed to support the maximum loads shown. Exceeding these load limits could cause sagging, instability, product collapse, and/or serious injury.



35 lb (15.9 kg)
per shelf

This CANVASTM product carries a one (1) year warranty against defects in workmanship and materials. Trileaf Distribution agrees to replace the defective product free of charge within the stated warranty period, when returned by the original purchaser with proof of purchase. This product is not guaranteed against wear or breakage due to misuse and/or abuse.