

MAXIMUM™

30 1/2" (77.6 cm) W

Wall Cabinet



model no. 068-7099-4

IMPORTANT

Please read this manual carefully before assembling and using this wall cabinet and save it for reference

INSTRUCTION MANUAL

Due to continuing improvements, the actual product may differ slightly from the product described herein.

TABLE OF CONTENTS

SAFETY	3
MAINTENANCE	3
EXPLODED VIEW / PART LIST	4
ASSEMBLY INSTRUCTIONS	5
COORDINATING PRODUCTS	9
WARRANTY	10

NOTE

If any parts are missing or damaged, or if you have any questions, please call 1-888-670-6682 and have the product number, cash register receipt and the date of purchase available when you call. **DO NOT SHIP YOUR PRODUCT BACK TO THE STORE, UNLESS WE SEND YOU WRITTEN INSTRUCTIONS FOR RETURN.**



SAVE THESE INSTRUCTIONS

This manual contains important safety and operating instructions. Read all instructions and follow them carefully with use of this products

SAFETY

To reduce the risk of serious injury, read and follow the safety instructions below before assembling and using this product.

- This product is intended for indoor use only.
- This product is not designed for commercial nor industrial usage.
- Keep the product on level surfaces. The product could become unstable and it may tip over if stored or moved on an uneven surface, which may cause personal injury, death or product damage.
- This product must be mounted on wall before using.
- Any assembly or maintenance of the product must be carried out by adults only.
- Arrange for necessary manpower when assembling, installing and moving the cabinet.
- Check all nuts and bolts periodically for tightness. When required, tighten them.
- Close and lock the door before moving this cabinet.
- DO NOT stand on this product. You may fall which may cause personal injury or death.
- DO NOT alter this product in any manner. For example, do not weld external bar locks or attach electrical equipment. This may cause product damage or personal injury.
- DO NOT leave children unattended near this product. Cabinet may tip over if improperly opened.
- DO NOT load anything on the top of the cabinet.
- DO NOT exceed the following weight limit for this product.
 - Maximum load: 150 lb (68 kg)

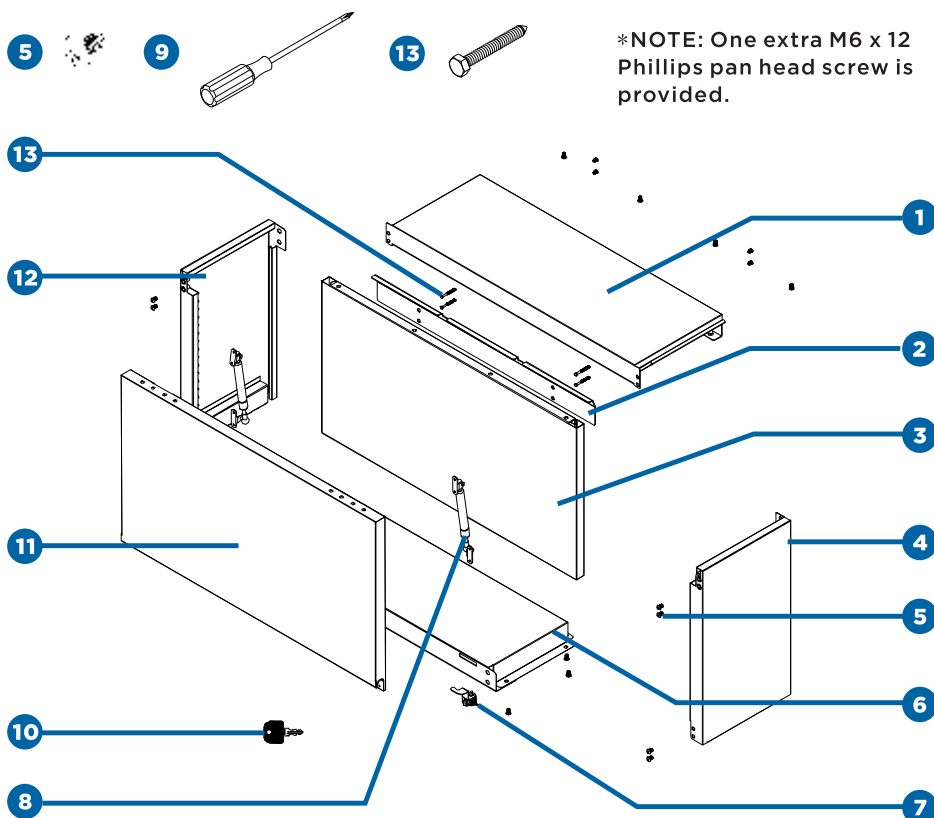
MAINTENANCE

- Periodically clean the door front and other surfaces with a soft rag and water.
- Grease and oil can be removed with most standard cleaning fluids. For safety, use a nonflammable cleaning fluid.

EXPLODED VIEW / PART LIST

No.	Description	Qty
1	Top Panel	1
2	Mounting Bracket	1
3	Back Panel	1
4	Right Side Panel	1
5	M6 x 12 Phillips Pan Head Screw *	35
6	Bottom Panel	1

No.	Description	Qty
7	Lock	1
8	Gas Strut	2
9	Screwdriver	1
10	Key	2
11	Door	1
12	Left Side Panel	1
13	M6 x 65 Hex Tapping Screw	4

**NOTE:**

Replacement keys may be ordered. Call our toll-free number.
The code which appears on the lock will be required.

TOOLS REQUIRED FOR ASSEMBLY

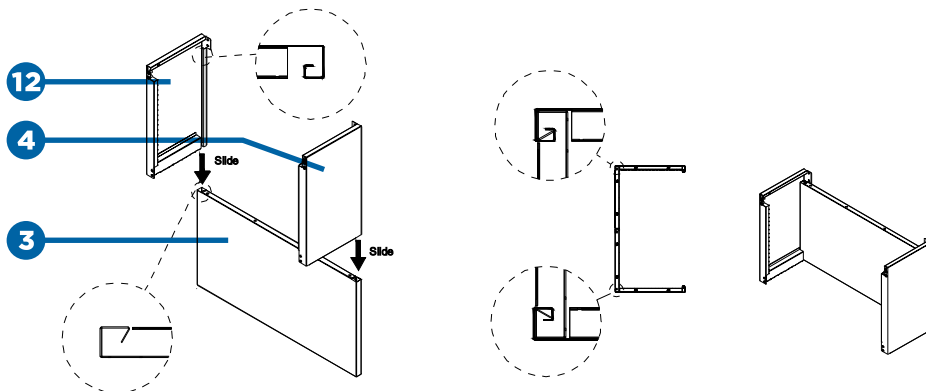
- Screwdriver (9)
- Power drill (not included)

IMPORTANT

All arrows on part labels should be followed when assembling this product.

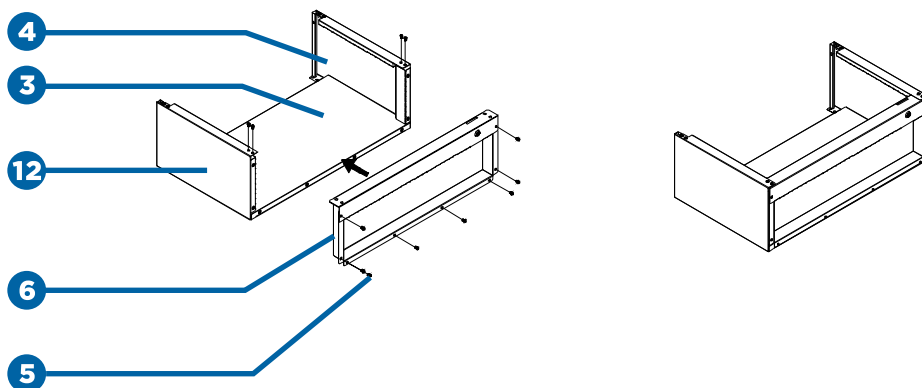
STEP 1

Attach the right & left side panels (4 & 12) to the back panel (3) by sliding the back panel's (3) edges into the grooves of the right & left side panels (4 & 12).



STEP 2

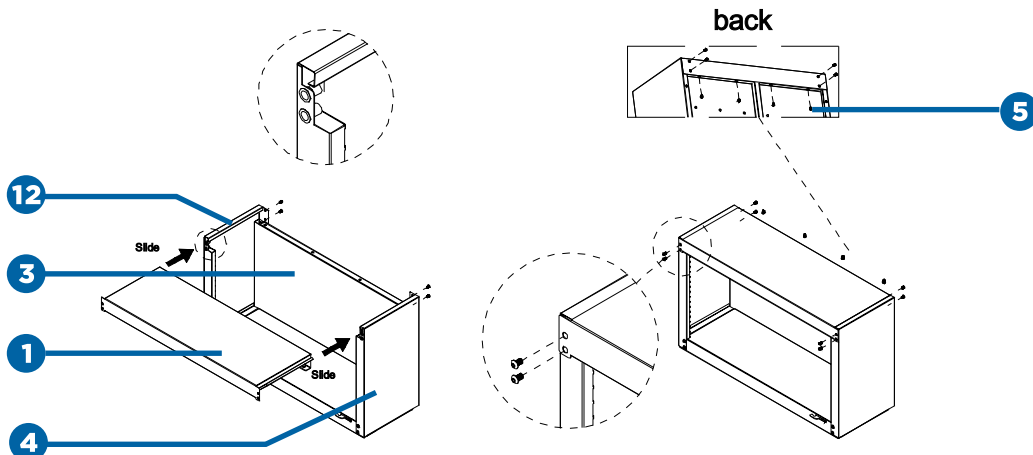
Attach the bottom panel (6) to the back panel (3), left and right side panels (4 & 12), and tighten securely with 12 PCS of M6 x 12 Phillips pan head screws (5).



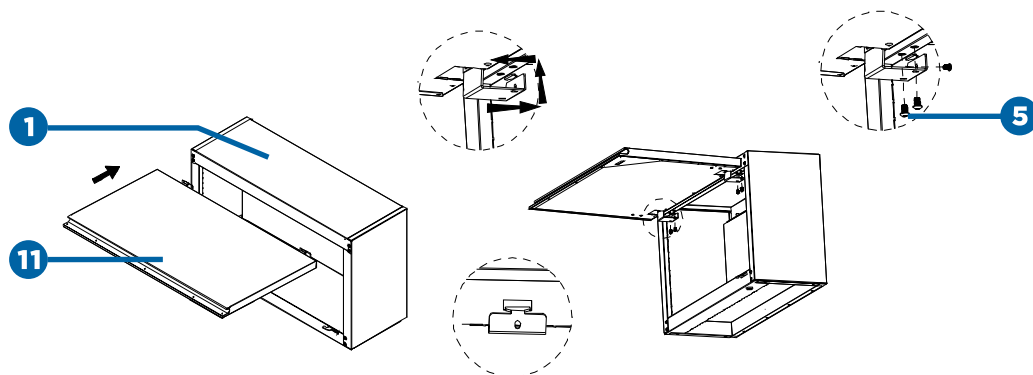
STEP 3

Attach the top panel (1) to the unit. Slide the top panel's (1) edges into the grooves of the left & right panels (4 & 12).

Tighten securely with 12 PCS of M6 x 12 Phillips pan head screws(5).

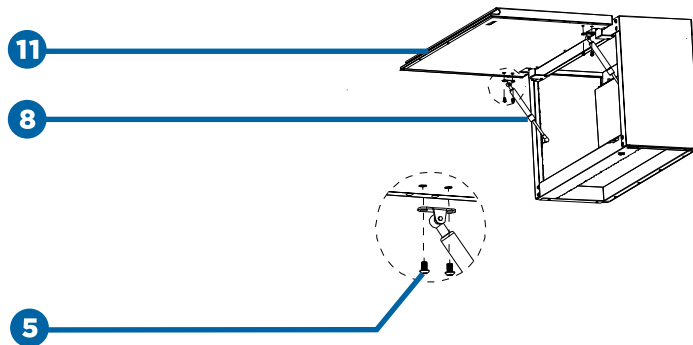
**STEP 4**

Insert the hanging hooks of the door's (11) hinges' into the slots on the inside of the top panel's (1) front edge. Tighten securely with 6 PCS of M6 x 12 Phillips pan head screws (5).



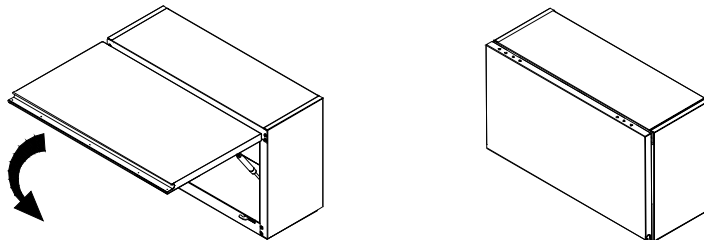
STEP 5

Attach the black parts of the gas struts (8) inside door's (11), on the top corners. Tighten securely with 4 PCS of M6 x 12 Phillips pan head screws (5).



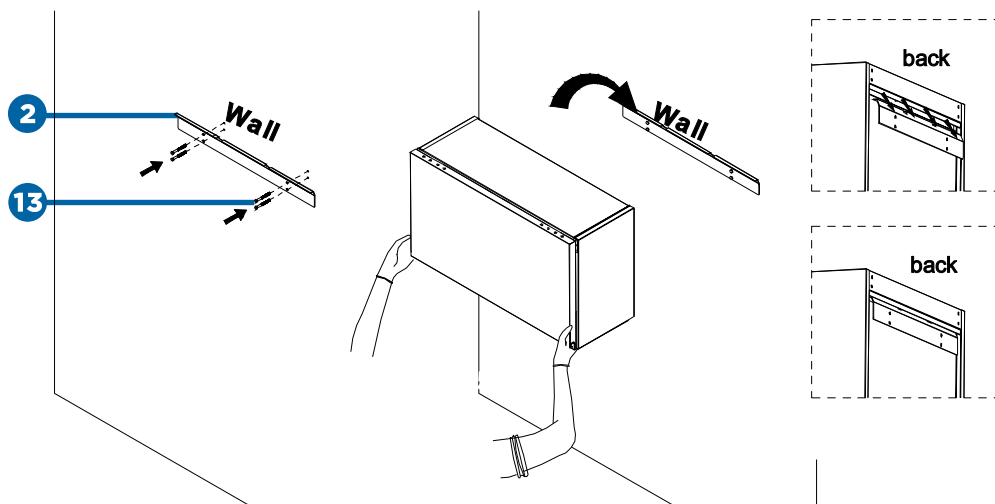
STEP 6

The cabinet is ready to be mounted on the wall.



STEP 7

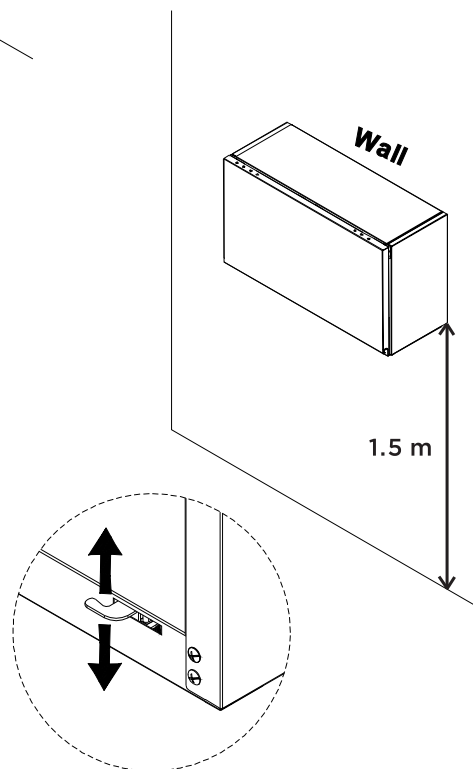
Fix the mounting bracket (2) on the wall with 4 PCS of M6 x 65 hex tapping screws (13) using a power drill. It is recommended to insert the M6 x 65 hex tapping screws (13) into the studs of the wall. Hang the cabinet onto the mounting bracket (2). Make sure the cabinet is securely attached to the wall. Now the cabinet is ready for use.

**IMPORTANT**

We suggest that you install this wall cabinet 1.5 m above the floor (distance between the cabinet bottom and floor).

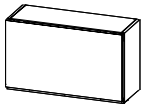
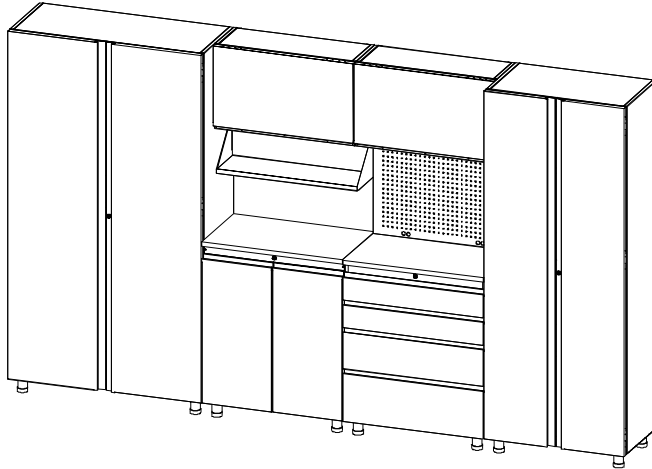
IMPORTANT

For its knock-down features, assembled units may vary slightly depending on how well individual users install them. Try tweaking the locking hook up or down if unit does not lock properly first time.



COORDINATING PRODUCTS

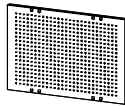
This product coordinates well with the units below to offer a best storage solution. They can be combined into various combinations to meet different storage requirements.



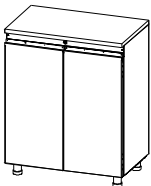
30 1/2" (77.6 cm) wall cabinet
068-7099-4



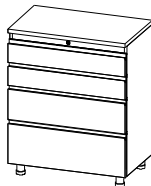
30 1/2" (77.6 cm) shelf
068-7303-8



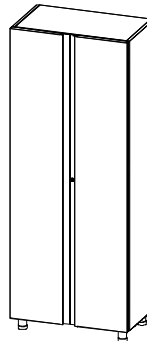
30 1/2" (77.6 cm) peg board
068-7304-6



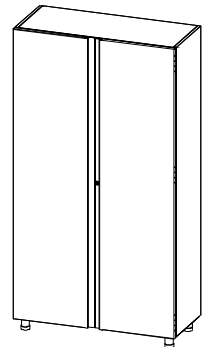
30 1/2" (77.6 cm) 2-door cabinet
068-7095-2



30 1/2" (77.6 cm) 4-drawer cabinet
068-7096-0



30 1/2" (77.6 cm) tall cabinet
068-7097-8



42" (106.8 cm) tall cabinet
068-7098-6

LIMITED WARRANTY

This product is guaranteed for 1 year from the date of original retail purchase against defects in materials and workmanship.

Subject to the conditions and limitations described below, this product, if returned to us with a proof of purchase within the stated warranty period and if covered under this warranty, will be repaired or replaced (with the same model, or one of equal value or specification), at our option. We will bear the cost of any repair or replacement and any costs of labor relating thereto.

This warranty is subject to the following conditions and limitations:

- a) A sales receipt that indicates the date of purchase must be provided;
- b) This warranty will not apply to any product or part thereof which is worn or broken or which has become inoperative due to abuse, misuse, accidental damage, neglect or lack of proper installation, operation or maintenance (as outlined in the applicable owner's manual or operating instructions) or which is being used for industrial, professional, commercial or rental purposes;
- c) This warranty will not apply to normal wear and tear or to expendable parts or accessories that may be supplied with the product that are expected to become inoperative or unusable after a reasonable period of use;
- d) This warranty will not apply to routine maintenance and consumable items such as, but not limited to, fuel, lubricants, vacuum bags, blades, belts, sandpaper, bits, fluids, tune-ups or adjustments;
- e) This warranty will not apply if damage is caused by repairs made or attempted by others (i.e. persons not authorized by the manufacturer);
- f) This warranty will not apply to any product that was sold as a reconditioned or refurbished product (unless otherwise specified in writing);
- g) This warranty will not apply to any product or part thereof if any part from another manufacturer is installed therein or any repairs or alterations have been made or attempted by unauthorized persons;
- h) This warranty will not apply to normal deterioration of the exterior finish, such as, but not limited to, scratches, dents, paint chips, or to any corrosion or discoloring by heat, abrasive and chemical cleaners;
- i) This warranty will not apply to component parts sold by and identified as the product of another company, which shall be covered under the product manufacturer's warranty, if any.

Additional Limitations

This warranty applies only to the original purchaser and may not be transferred. Neither the retailer nor the manufacturer shall be liable for any other expense, loss or damage, including, without limitation, any indirect, incidental, consequential or exemplary damages arising in connection with the sale, use or inability to use this product.

Notice to Consumer

This warranty gives you specific legal rights, and you may have other rights, which may vary from province to province. The provisions contained in this warranty are not intended to limit, modify, take away from, disclaim or exclude any statutory warranties set forth in any applicable provincial or federal legislation.