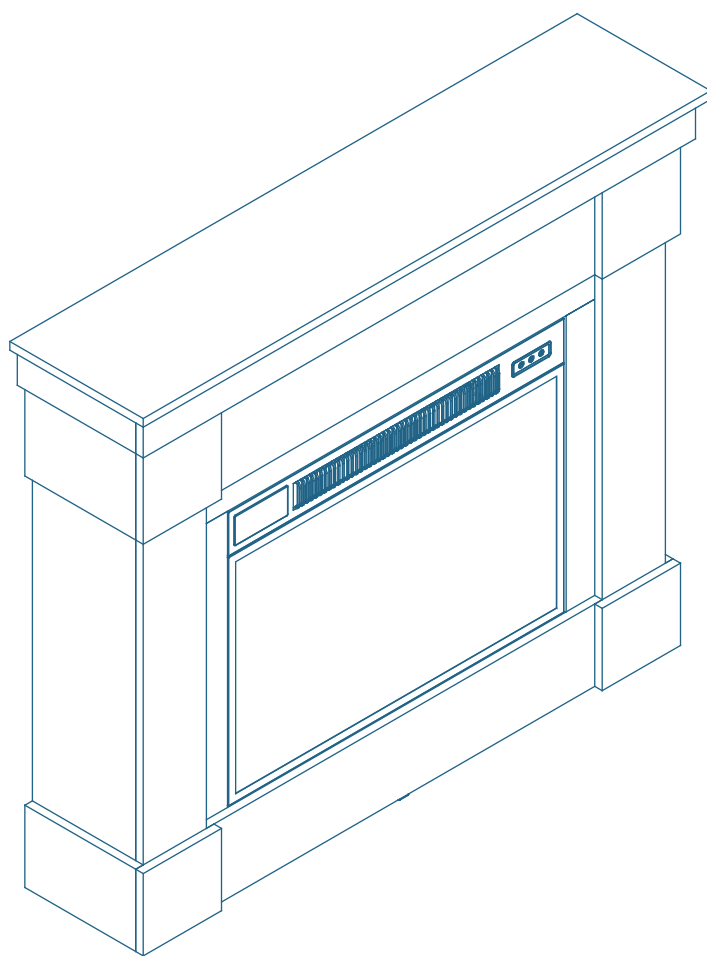




ALTON ELECTRIC FIREPLACE

Model No.064-3178-8



HOMEOWNER'S MANUAL

 1-877-483-6759

IMPORTANT: If you have any problems or questions, email or call customer service before you return this product to the store where it was purchased.

Made in China

Imported for Trileaf Distribution Trifeuil Toronto, Canada M4S 2B8

Table of Contents	3
Important Safety Instructions	3
Parts List	6
Assembly	8
Operating Instructions	19
Care and Maintenance	21
Troubleshooting Guide	23
Replacement Parts List and Exploded View	24
Warranty	25



Warning! To reduce the risk of serious injury, read the following safety instructions before assembling and using the fireplace.

Caution! Always keep children under close supervision while they are using or around this product. Never leave children unattended.

When using electrical appliances, basic precautions should always be followed to reduce the risk of fire, electric shock and injury to persons, including the following:

Read all instructions before installing or using the fireplace.



DANGER: If the information in this manual is not followed exactly, an electric shock or fire may result causing property damage, personal injury or loss of life.



WARNING: This appliance is hot when in use. To avoid burns, DO NOT let bare skin touch hot surfaces. Keep combustible material, such as furniture, pillows, bedding, papers, clothes and curtains, at least 3' (0.9 m) from the front of the heater and keep them away from the sides and rear.



WARNING: Extreme caution is necessary when any heater is used by or near children or individuals with disabilities and whenever the fireplace is left operating and unattended.



WARNING: DO NOT run cord under carpeting. DO NOT cover cord with throw rugs, runners, or similar covering. Arrange cord away from traffic areas and where it will not be tripped over.



WARNING: Do NOT insert or allow foreign objects to enter any ventilation or exhaust opening as this may cause an electric shock or fire, or damage the appliance.



WARNING: This appliance has hot and arcing or sparking parts inside. DO NOT use it in areas where gasoline, paint or flammable vapours or liquids are used or stored. This fireplace should not be used as a drying rack for clothing. Christmas stockings or decorations should not be hung on it or near it.

IMPORTANT: RETAIN FOR FUTURE REFERENCE, AND READ CAREFULLY

Use this appliance only as described in the manual. Any other use is NOT recommended by the manufacturer and may cause fire, electric shock or injury to persons.

CAUTION!

- If possible, ALWAYS unplug this appliance when not in use.
- DO NOT operate any heater with a damaged cord or plug or after the heater malfunctions.
- DO NOT operate any heater if it has been dropped or damaged in any manner. Disconnect power at service panel and have heater inspected by a reputable electrician before reusing.
- Any repairs to this fireplace should be carried out by a qualified service person.
- Under no circumstances should this fireplace be modified. Parts having to be removed for servicing must be replaced prior to operating this fireplace again.
- DO NOT use outdoors.
- This fireplace may be installed on the floor only in your home. This fireplace is an insert fireplace and can't be used as a movable fireplace.
- This heater is not intended for use in bathrooms, laundry areas and similar indoor locations. NEVER place heater where it may fall into a bathtub or other water container.
- To disconnect this appliance, turn controls to the off position, then remove plug from outlet.
- ONLY connect to properly-grounded outlets.
- This appliance, when installed, must be electrically grounded in accordance with local codes, with the current CSA C22.1 Canadian Electrical Code or follow the National Electrical Code, ANSI/NFPA N0.70.
- To prevent a possible fire, DO NOT block air intakes or exhaust in any manner. DO NOT use on soft surfaces, where opening may become blocked.
- The heaters MUST NOT be located immediately below a socket-outlet.
- ALWAYS plug heaters directly into a wall outlet/receptacle. NEVER use with an extension cord or relocatable power tap (outlet/power strip).
- The heater has a safety device that makes it stop working once the inner temperature reaches 85°C ($\pm 2^\circ\text{C}$). To reset the appliance, turn heater off and disconnect power, let it cool off for 10 minutes and plug back in.
- DO NOT slide insert on top of wood to avoid scratching wood surface.
- DO NOT place any objects on top of insert and top air intake vents as this will cause unit to overheat and can cause a fire.
- This Class B digital apparatus complies with Canadian ICES-003.

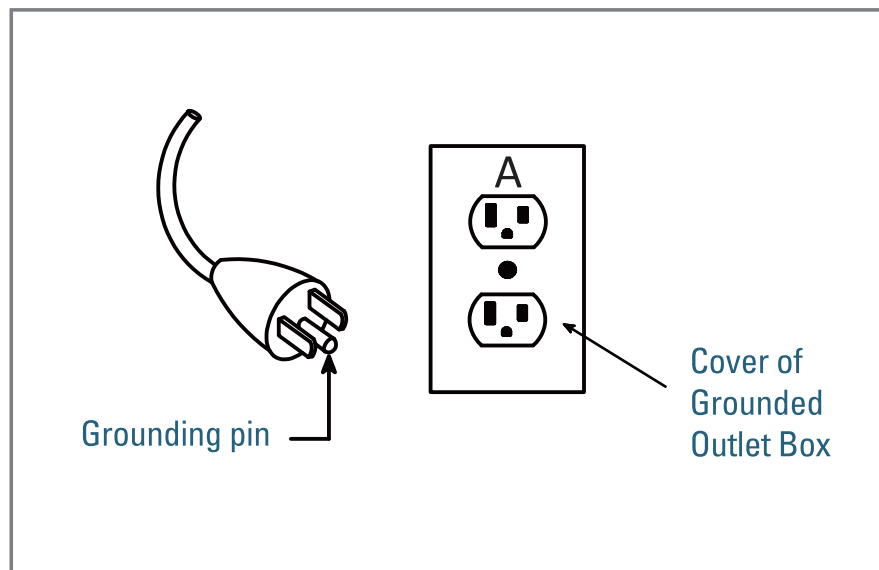
Electrical Specifications

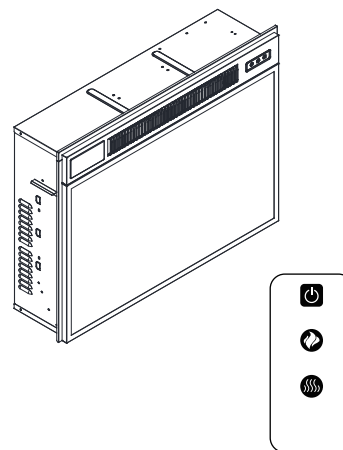
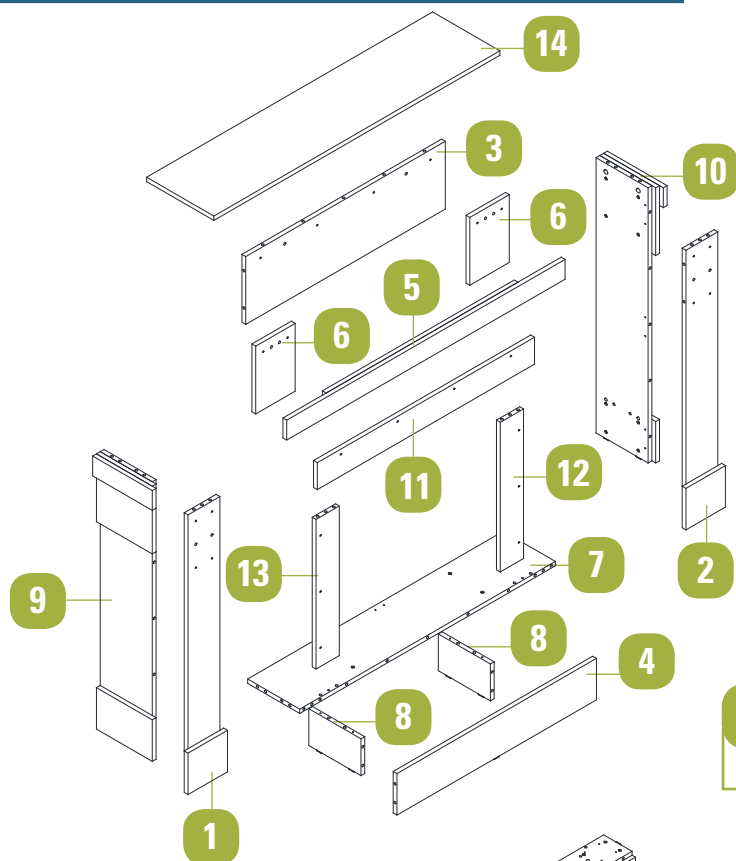
Voltage	120 V AC, 60 Hz
Amps	12.5 A
Watts	1,500 W

Electric Connection

•A 15 A, 120 V, 60 Hz circuit with a properly-grounded outlet is required. Preferably, the fireplace will be on a dedicated circuit as other appliances on the same circuit may cause the circuit breaker to trip or the fuse to blow when the heater is in operation. The unit comes standard with 6' (1.8 m) three prong cord, exiting from the rear of the fireplace. Plan the installation to avoid the use of an extension cord. **ALWAYS** plug heaters directly into a wall outlet/receptacle. **NEVER** use with an extension cord or relocatable power tap (outlet/power strip).

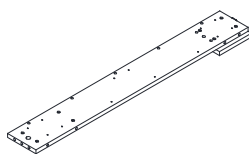
•This heater is for use on 120 V. The cord has a plug as shown below.





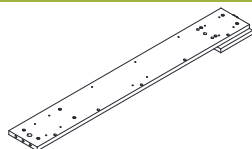
1

Left front panel - 1



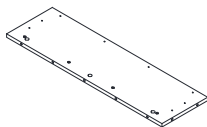
2

Right front panel - 1



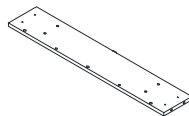
3

Upper front panel - 1



4

Lower front panel - 1



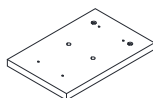
5

Top strip - 1



6

Decorative block - 2



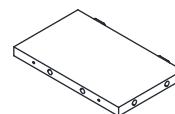
7

Bottom - 1



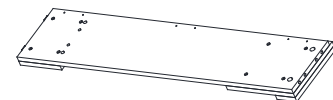
8

Firebox Down Support - 2



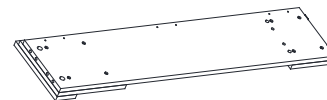
9

Left side panel - 1



10

Right side panel - 1



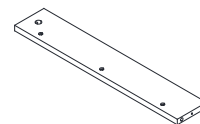
11

Upper Decorative Panel - 1



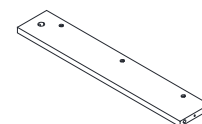
12

Right Decorative Panel - 1



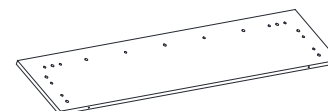
13

Left Decorative Panel - 1



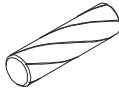
14

Top - 1



A

Wood dowel 7.8 x 30 mm - 54



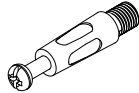
B

Wood dowel 7.8 x 20 mm - 10



C

Cam bolt - 18



D

Cam - 22



E

Double-end cam bolt - 2



F

Screw 4 x 24 mm - 28



G

Metal plate - 4



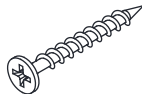
H

Screw 4 x 12 mm - 40



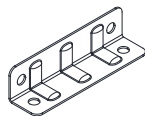
I

Screw 3.8 x 40 mm - 8



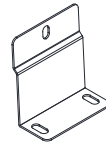
J

Metal plate - 6



K

Firebox L-bracket - 2



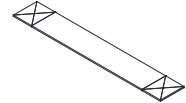
L

Screw 4 x 10 mm - 6



M

Fabric strip - 2



N

Metal washer - 4



O

Wall anchor - 2

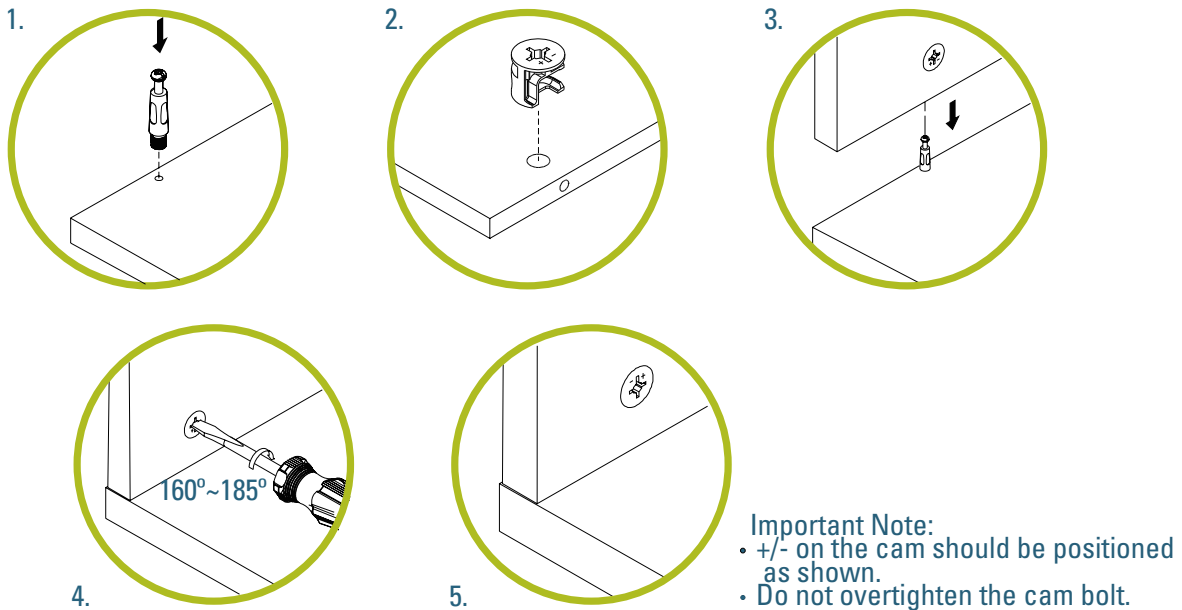


- Read each section carefully before starting. It is very important that each step is performed in the correct order. If these steps are not followed in sequence, assembly difficulties will occur.
- Make sure all parts are included. Most board parts are labelled or stamped on the raw edge.
- Work in a spacious area, preferably on a carpet, near the place the unit will be located.
- Do not use power tools to assemble your furniture. Power tools may strip or damage the parts.

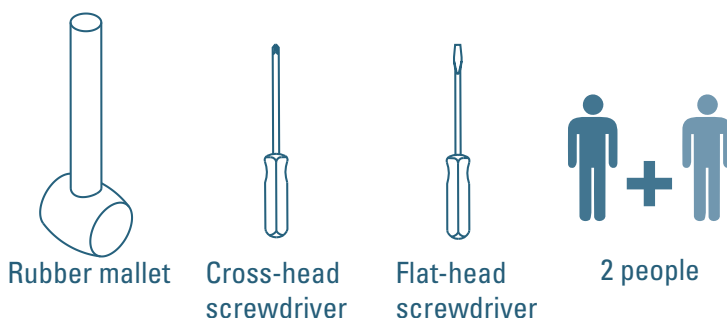
HELPFUL HINTS

- Identify, sort and count the parts before beginning assembly.
- Compression dowels should be tapped in with a rubber mallet.
- Back panels provide stability and support. Unit may collapse without the back panel installed.
- Clean the product with your choice of furniture polish and a soft cloth. **DO NOT USE** harsh chemicals or abrasive cleaners.
- Move your new furniture carefully. Two people are needed to lift and carry the unit to its new location.
- Never push or drag your furniture (especially on a carpet).

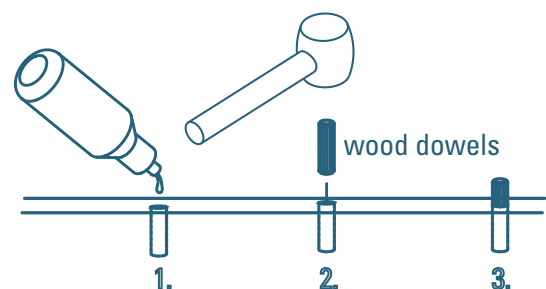
This illustration shows how the cam-fastening system works.



Needed for assembly:

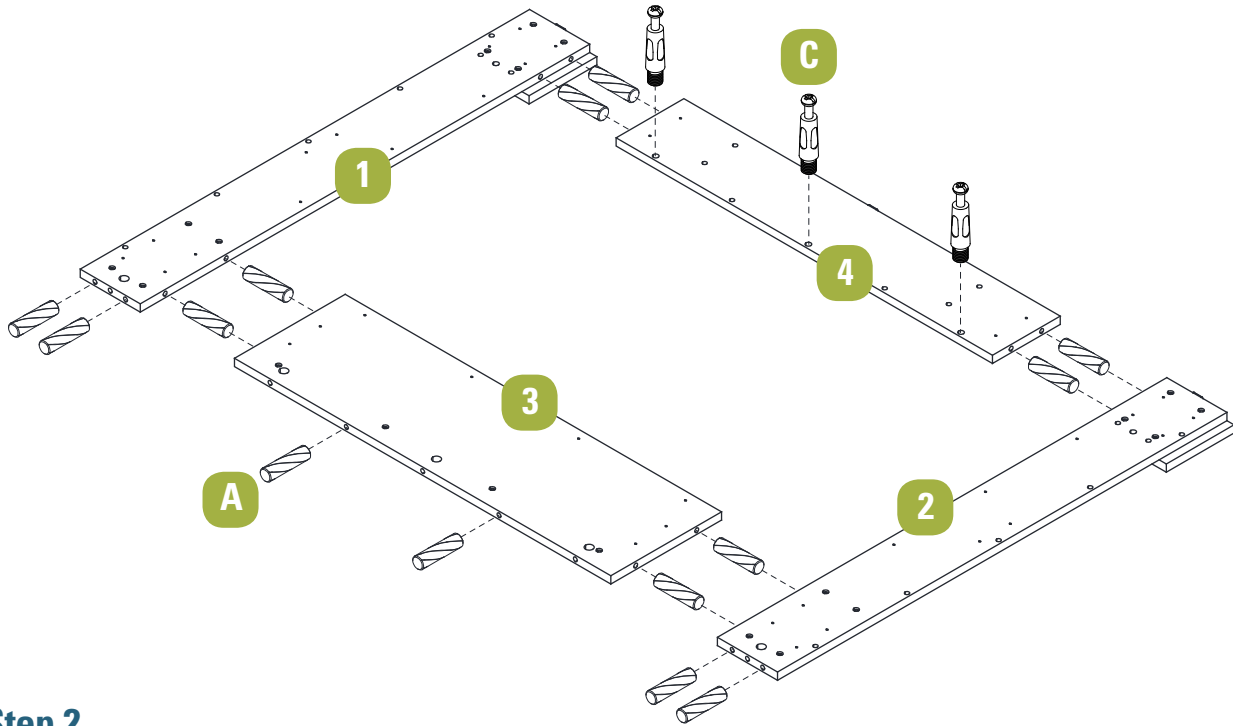


Glue not enclosed. (We recommend to apply some glue into holes before inserting wood dowels.)



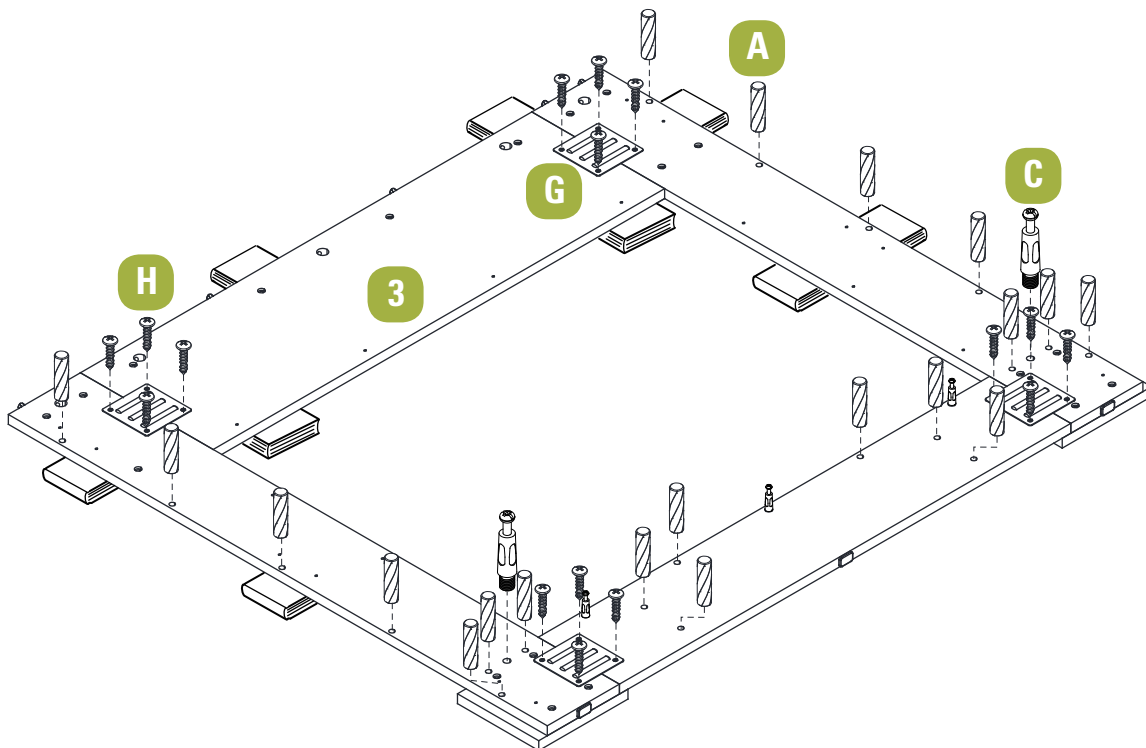
Step 1

Requires 1, 2, 3, 4, A, C



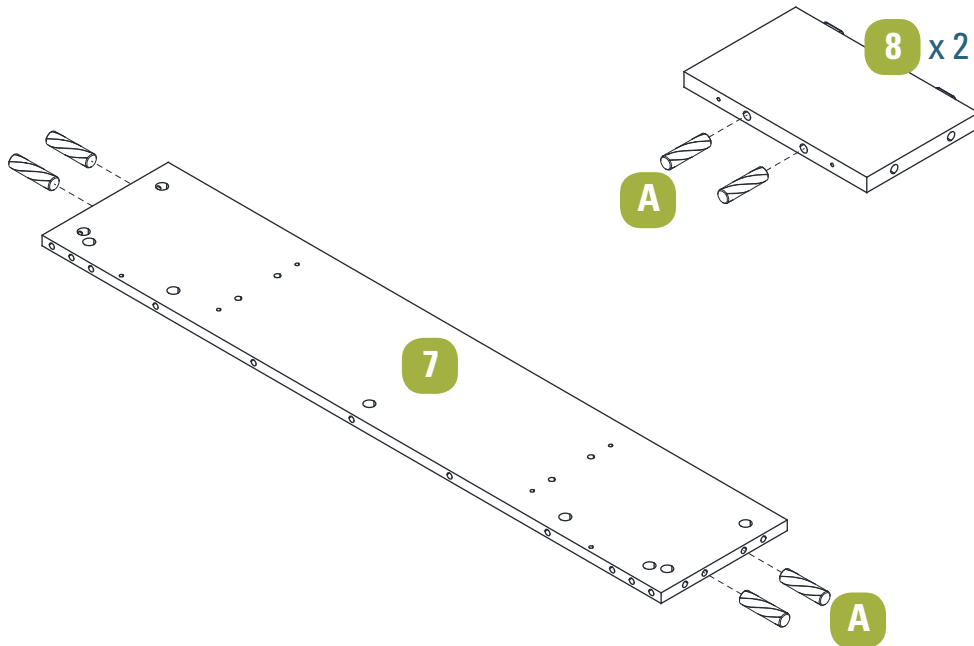
Step 2

Requires 3, A, C, G, H

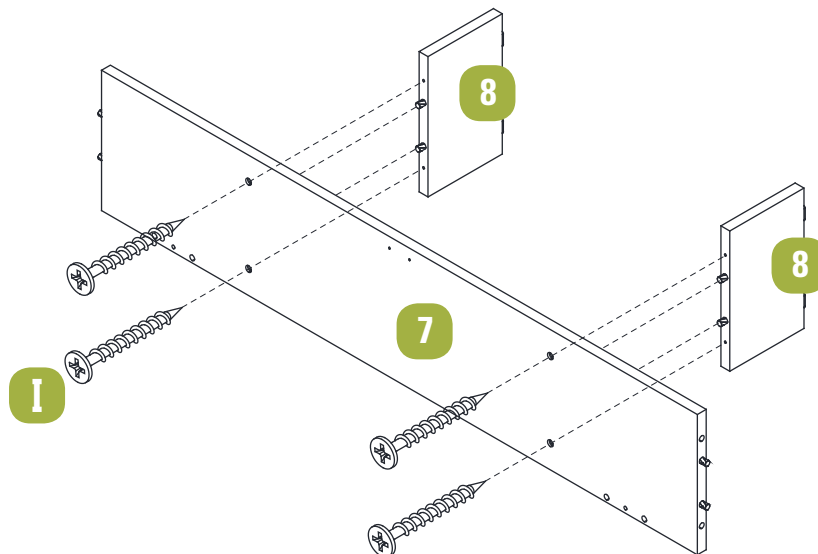
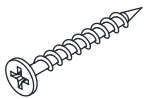


Step 3
Requires 7, 8, A

A

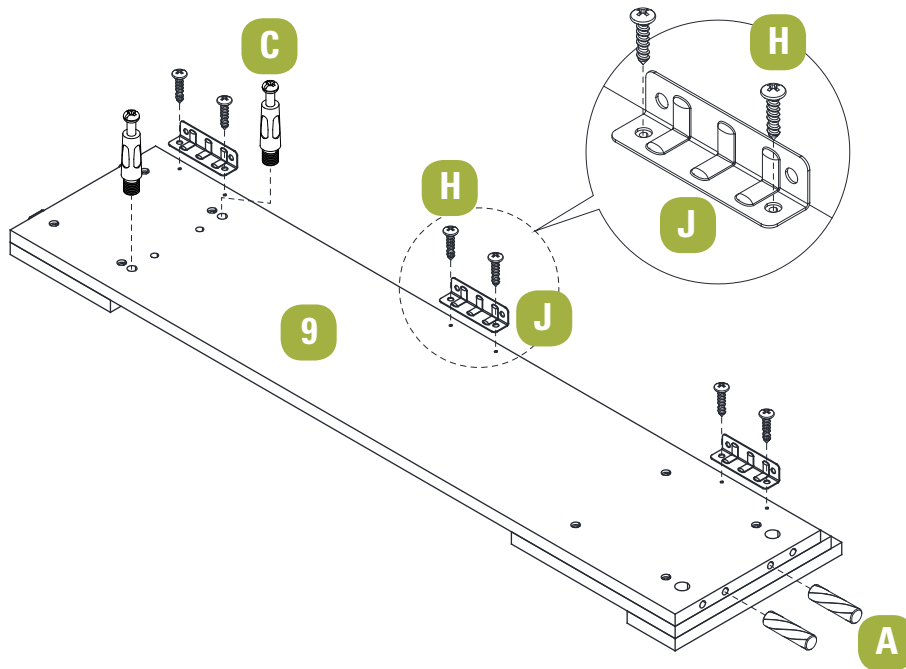
**Step 4**
Requires 7, 8, I

I



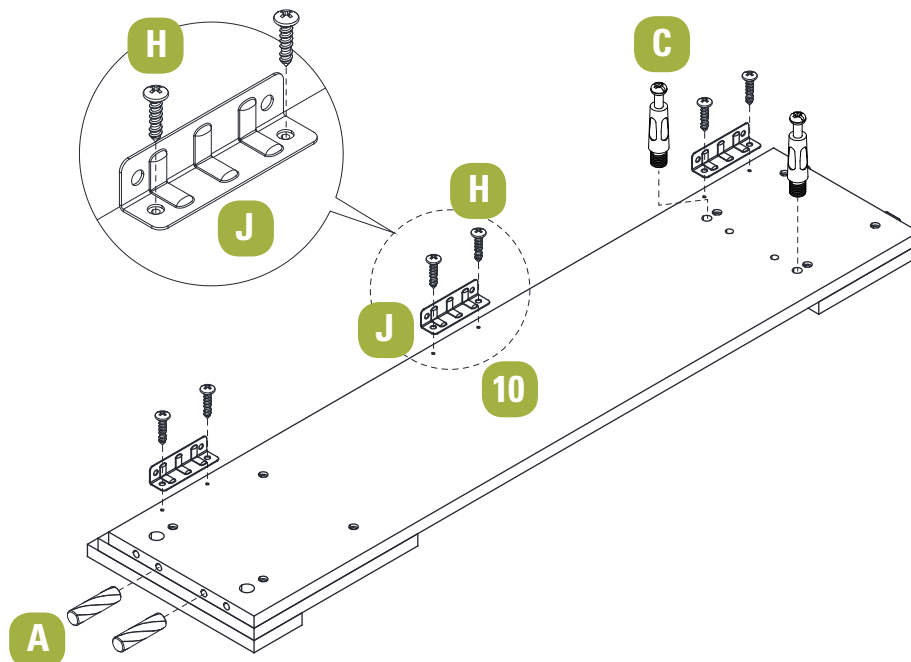
Step 5

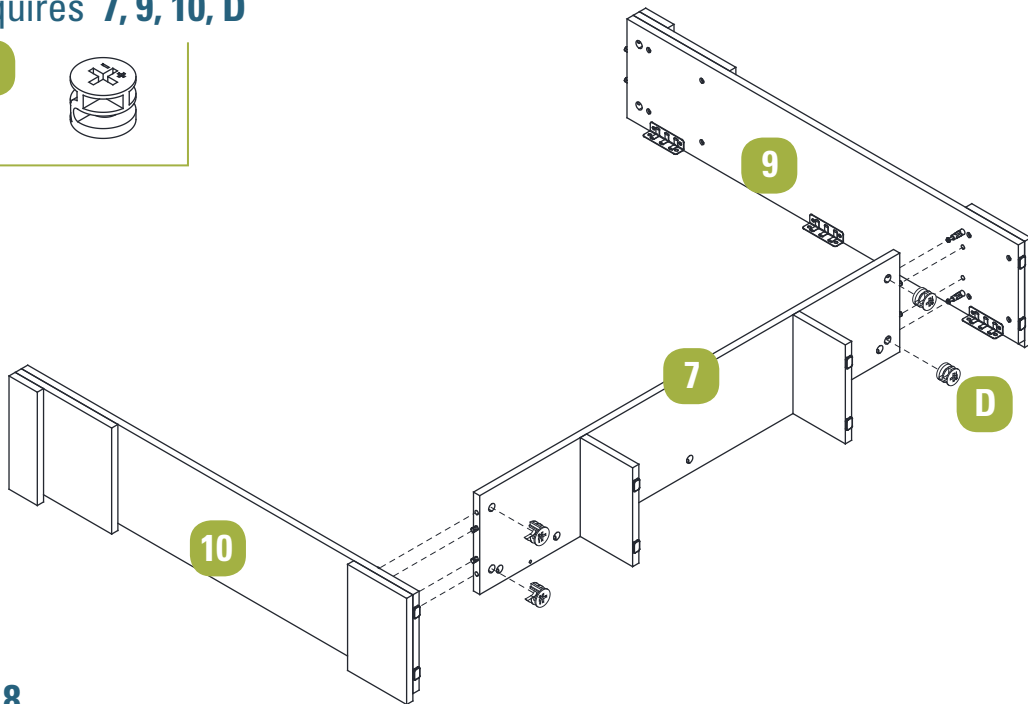
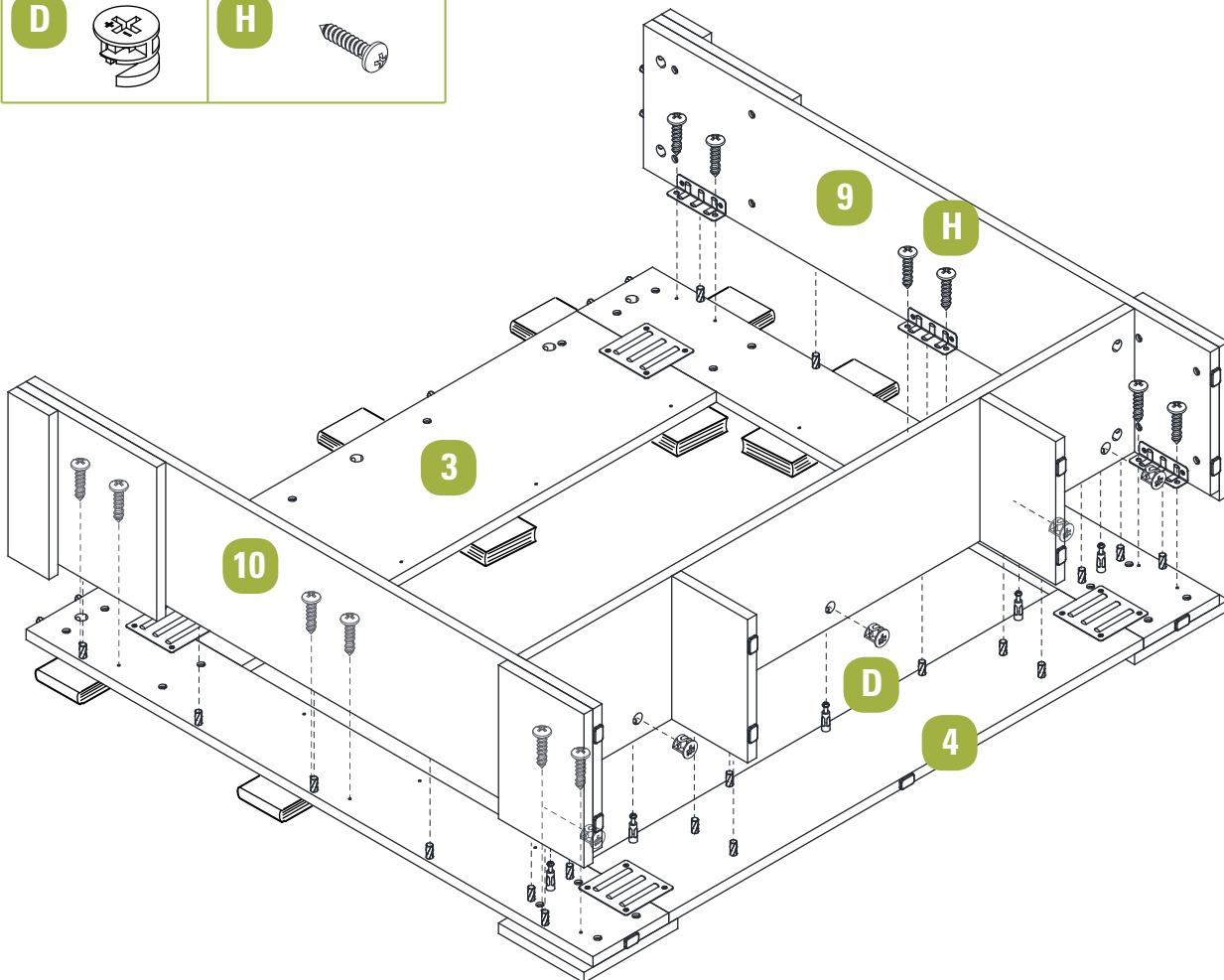
Requires **9, A, C, H, J**



Step 6

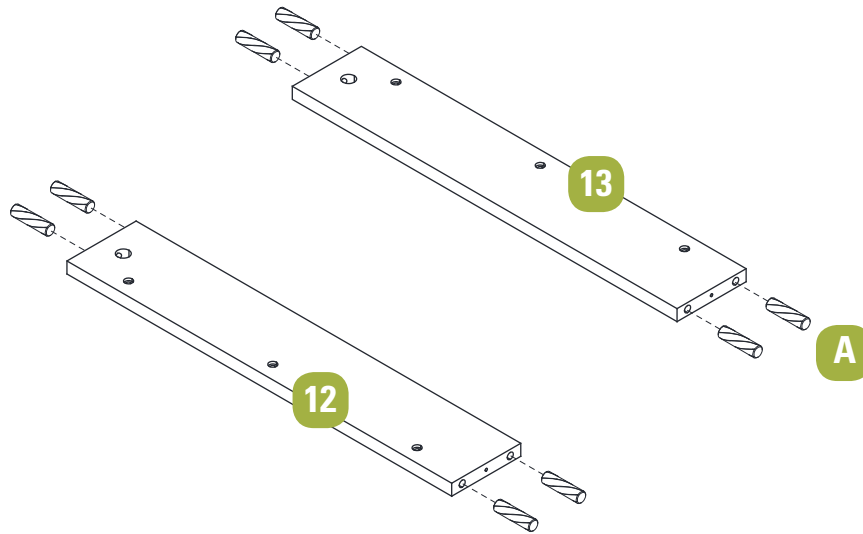
Requires **10, A, C, H, J**



Step 7Requires **7, 9, 10, D****D****Step 8**Requires **3, 4, 9, 10, D, H****D****H**

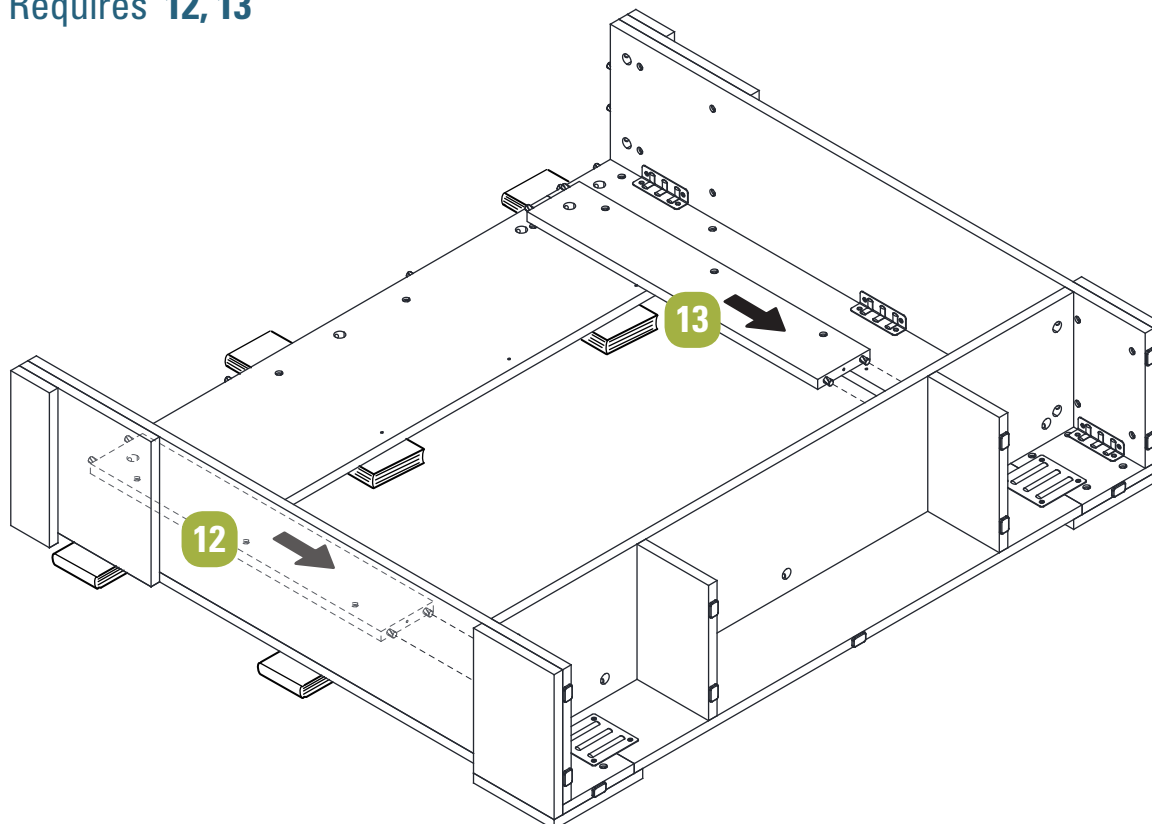
Step 9

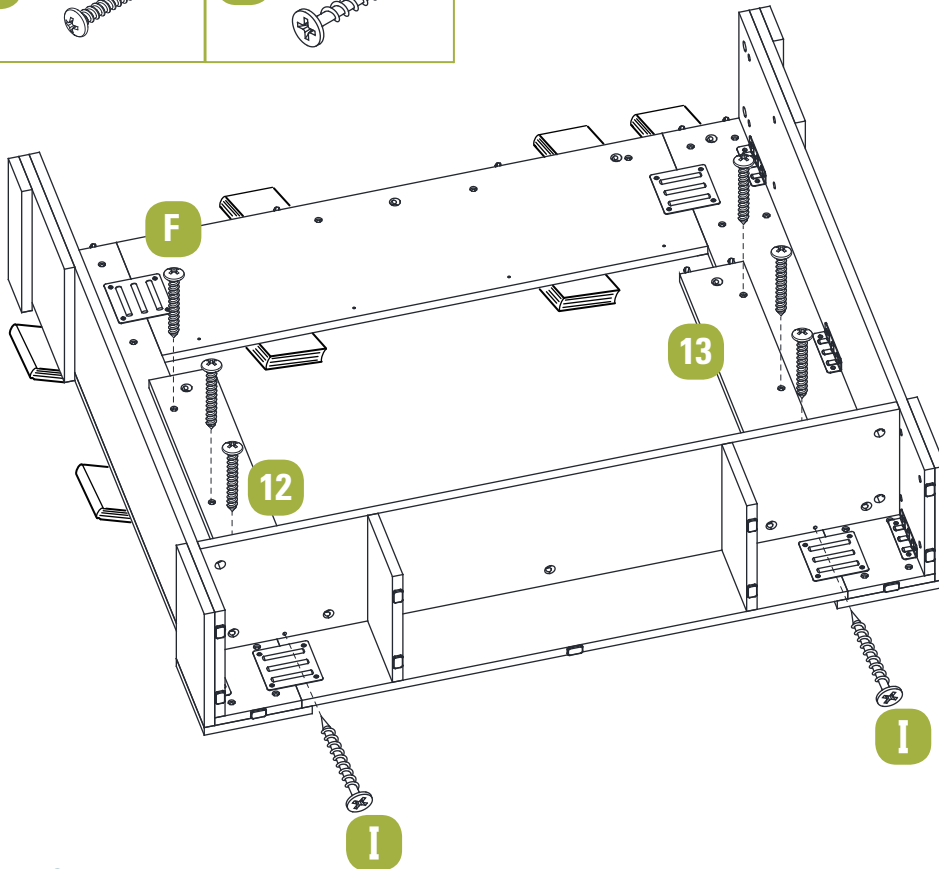
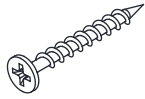
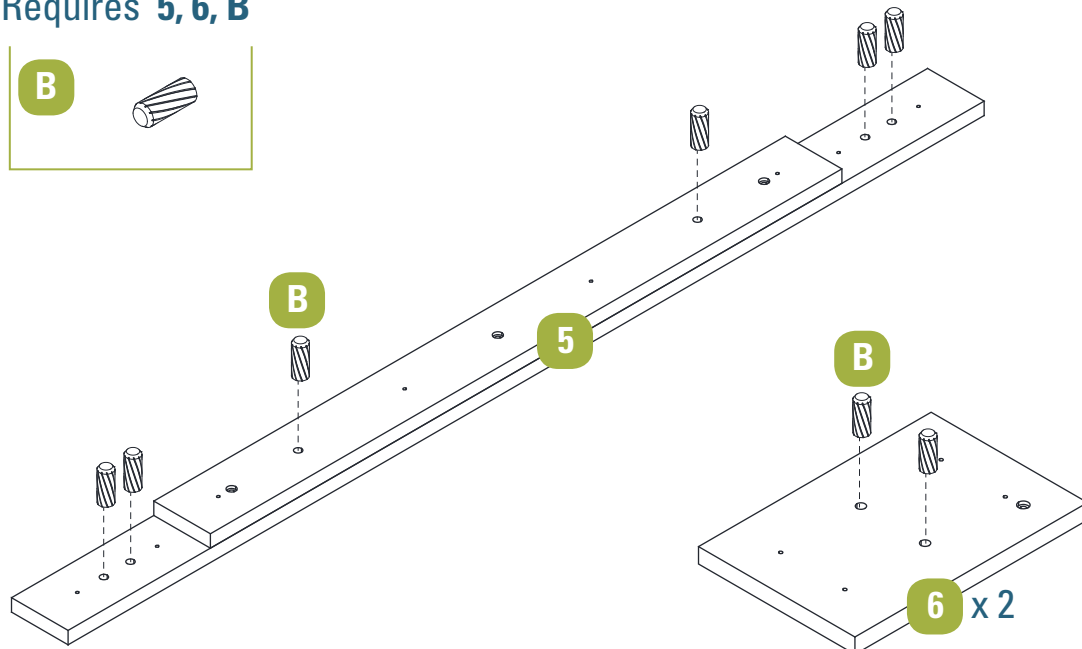
Requires **12, 13, A**



Step 10

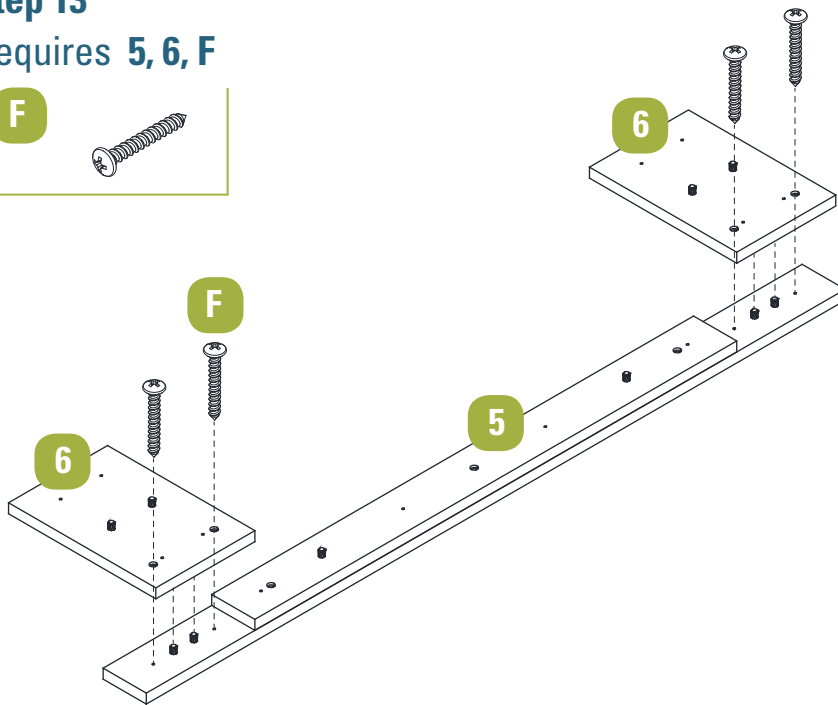
Requires **12, 13**



Step 11Requires **12, 13, F, I****F****I****Step 12**Requires **5, 6, B****B**

Step 13

Requires **5, 6, F**

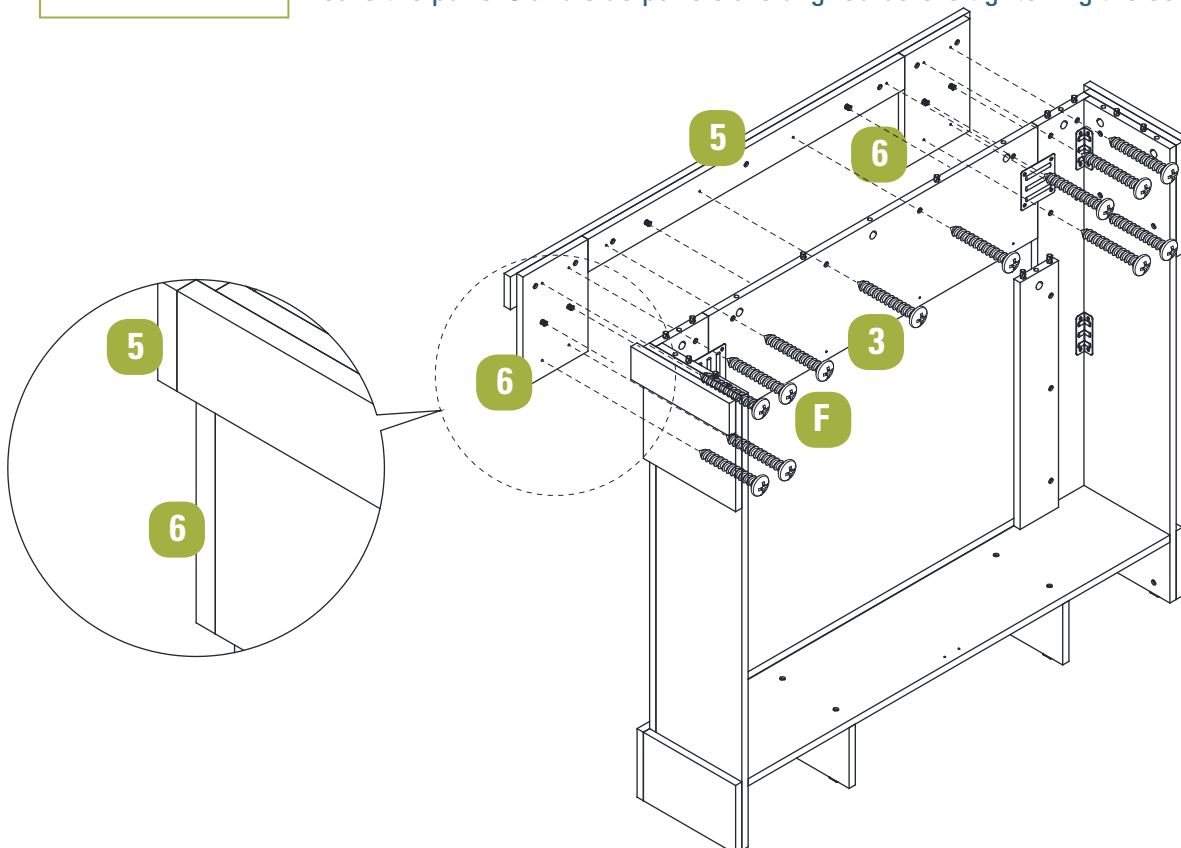


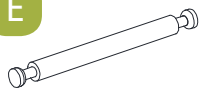
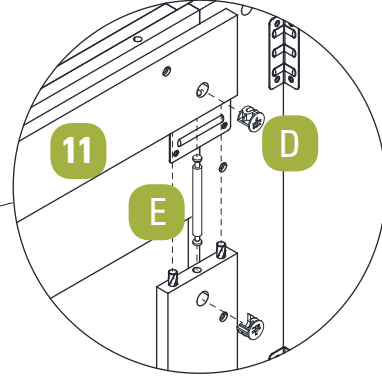
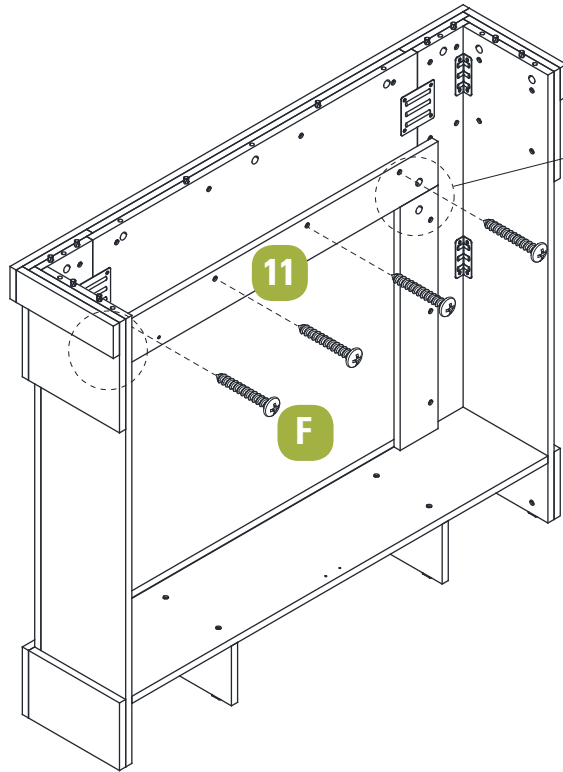
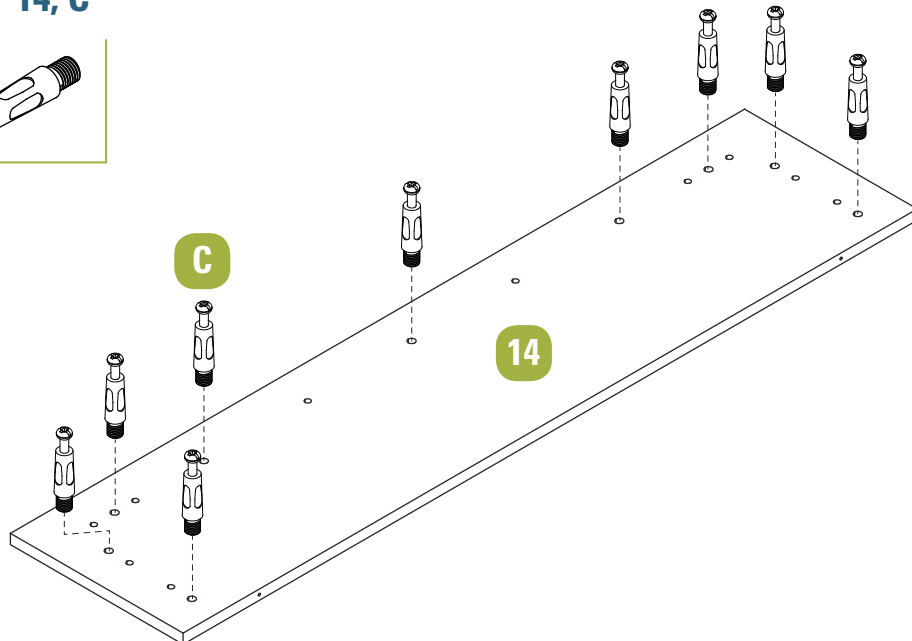
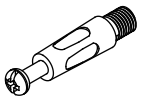
Step 14

Requires **5, F**



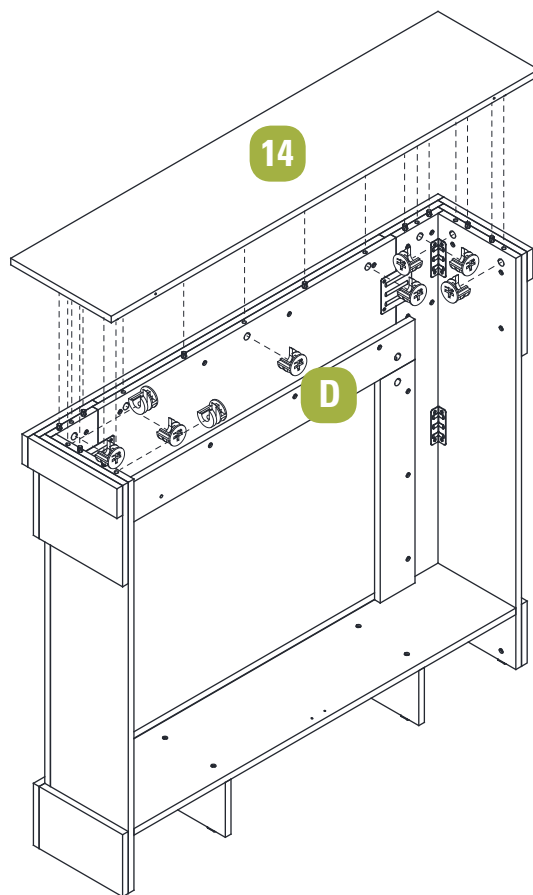
- Make sure the panels 6 and side panels are aligned. If necessary, adjust screws (F) in step 13 for a good fit.
- Align and attach the top strip panel assembly in place by using screws (F). Make sure the panel 5 and side panels are aligned before tightening the screws (F).



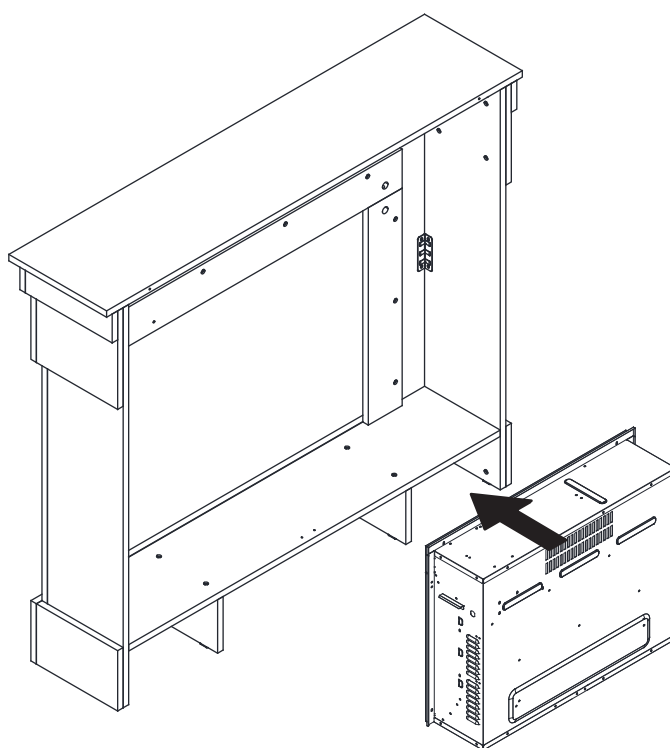
Step 15Requires **11, D, E, F****D****E****F****Step 16**Requires **14, C****C**

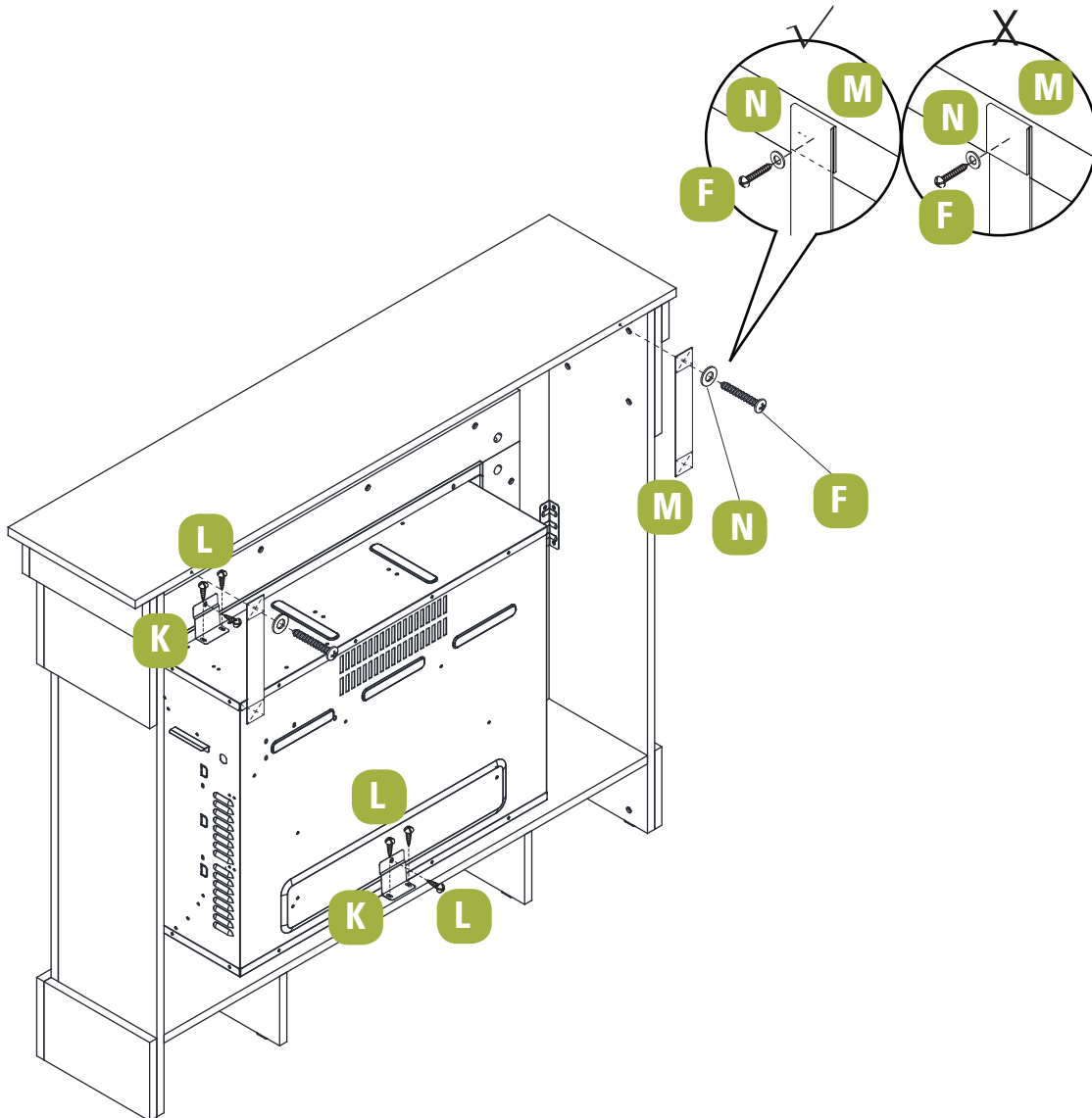
Step 17

Requires 14, D



Step 18

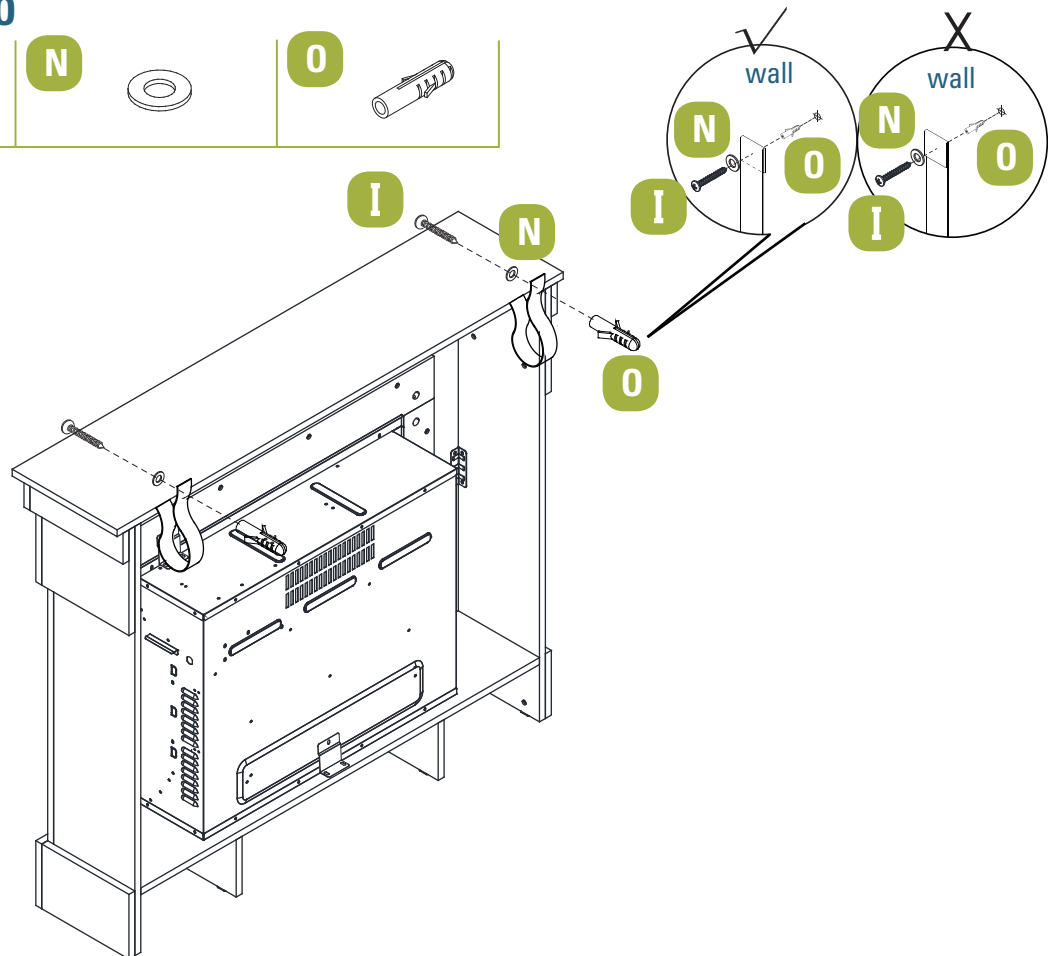


Step 19Requires **F, K, L, M, N****WARNING**

Young children may be injured by tipping furniture. The use of a tipping restraint is highly recommended. This hardware, when properly installed, could provide protection against the unexpected tipping of furniture due to improper use.

Step 20

Requires **I, N, O**



Step 21

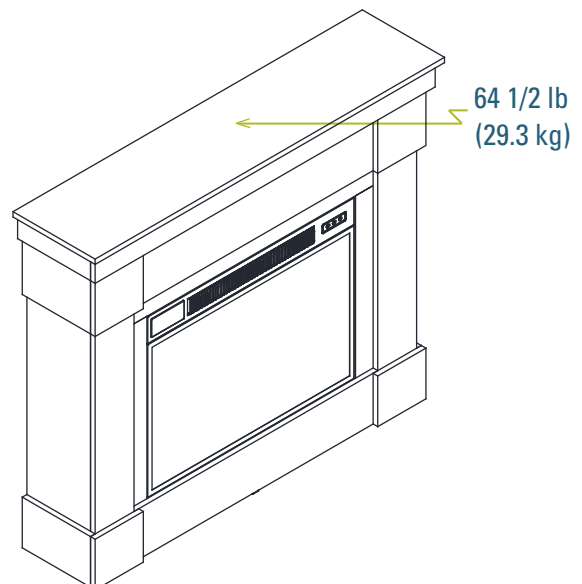
Enjoy your furniture

WEIGHT LIMIT

This unit has been designed to support the maximum loads shown. Exceeding this load limit could cause sagging, instability, product collapse, and/or serious injury.

Please make sure that all the items are removed before moving the assembled unit.

The unit must be lifted by more than one person not dragged or pushed. Failure to do so will cause product damage, instability, product collapse, and/or serious injury.



This appliance can be operated by both remote control and manual buttons. The manual control panel can be accessed at top right corner of the insert.



POWER

Press the power button to turn the fireplace insert on and off.

Press the power button once to turn the unit on. Press again to turn the unit off.



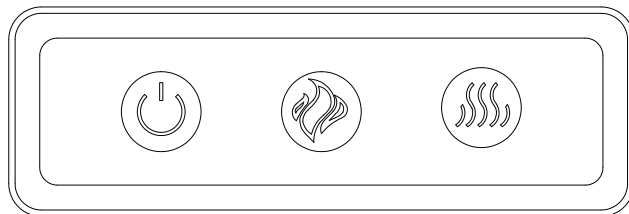
FLAME

This button controls the brightness of the flame effect. You must press the button several times to see the full flame effect.

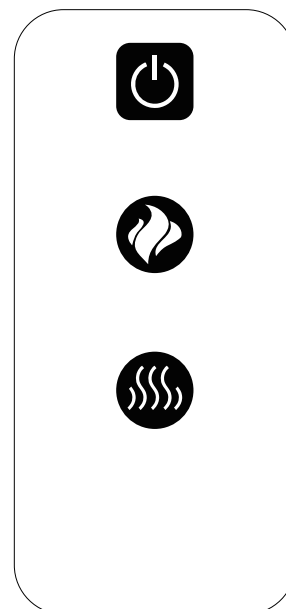


HEATER

The heater button turns the heater on or off.



Manual control



Remote control

Care and Maintenance

- Make sure the unit is turned OFF, unplugged and the heating elements of heater are cool whenever you are cleaning the heater.
- Clean the metal trim using a water-dampened soft, clean cloth. DO NOT use brass polish or household cleaners as these products will damage the metal trim.
- The motors used on the fan and the flame generator assembly are pre-lubricated for extended bearing life and require no further lubrication. However, periodic cleaning/vacuuming of the fan/heater and air intake/output vents is recommended.
- Check your heater cord and plug connections. A loose fitting outlet can cause the plug to overheat and / or cause a fire. Ensure plug fits tightly in the outlet. Check frequently during use to make sure plug and outlet are not hot. If so, discontinue using heater and have outlet replaced by a qualified electrician.
Note: Heaters draw more current than small appliances, overheating of the outlet may occur even if it has not occurred with the other appliances.
- Any other servicing should be performed by an authorized service representative.



WARNING: Make sure the power is turned off before proceeding. Any electrical repairs or rewiring of this unit should be carried out by a licensed electrician in accordance with national and local codes. If repairing or replacing any electrical component or wiring, the original wire routing, colour coding and securing locations must be followed.



WARNING: Electrical outlet wiring must comply with local building codes and other applicable regulations to reduce the risk of fire, electric shock and injury to persons.



WARNING: Do not use this fireplace if any part of it has been under water. Immediately call a qualified service technician to inspect the fireplace and replace any part of the electrical system.



WARNING: Disconnect power before attempting any maintenance or cleaning to reduce the risk of fire, electric shock or personal injury.

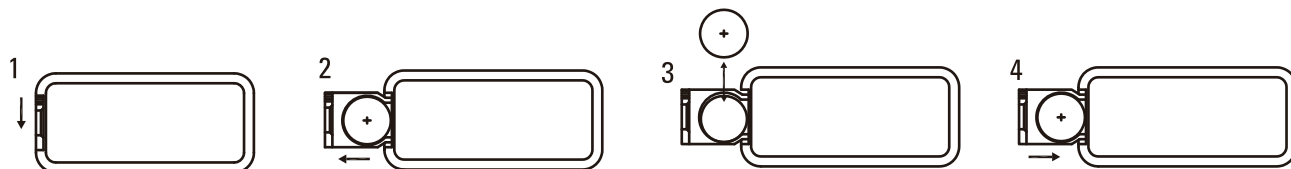


WARNING: During any service of this appliance, the power to the unit must be turned o. First turn the main power switch to the "OFF" position. Then remove the electrical plug from the wall outlet.

Replacing the Remote Control Battery

When the remote control stops operating or its range seems reduced, it is time to replace the battery with new ones.

3 volt lithium coin cell type 2025 battery.



NOTE: Caution for Ingestion.

- Do not mix alkaline, standard (carbon-zinc), or rechargeable (ni-cad, ni-mh, etc) batteries. Battery should be removed if the product is to be left unused for a long time.
- Please operate the remote control at a slow measured pace. Press the remote control buttons with an even motion and gentle pressure. Repeatedly pressing buttons in rapid succession may cause the transmitter to malfunction.

Disposal of Used Battery

- The batteries may contain hazardous substances that could endanger the environment and human health.
- Used batteries must not be processed with municipal waste. Instead they should be brought to the appropriate collection point for recycling.
- By correctly disposing of used batteries, you prevent potential negative consequences for the environment and human health. Recycling used materials also preserves our natural resources.
- For more information about collecting and recycling used batteries, please contact your local municipality, your waste disposal service or the store where you purchased this product.

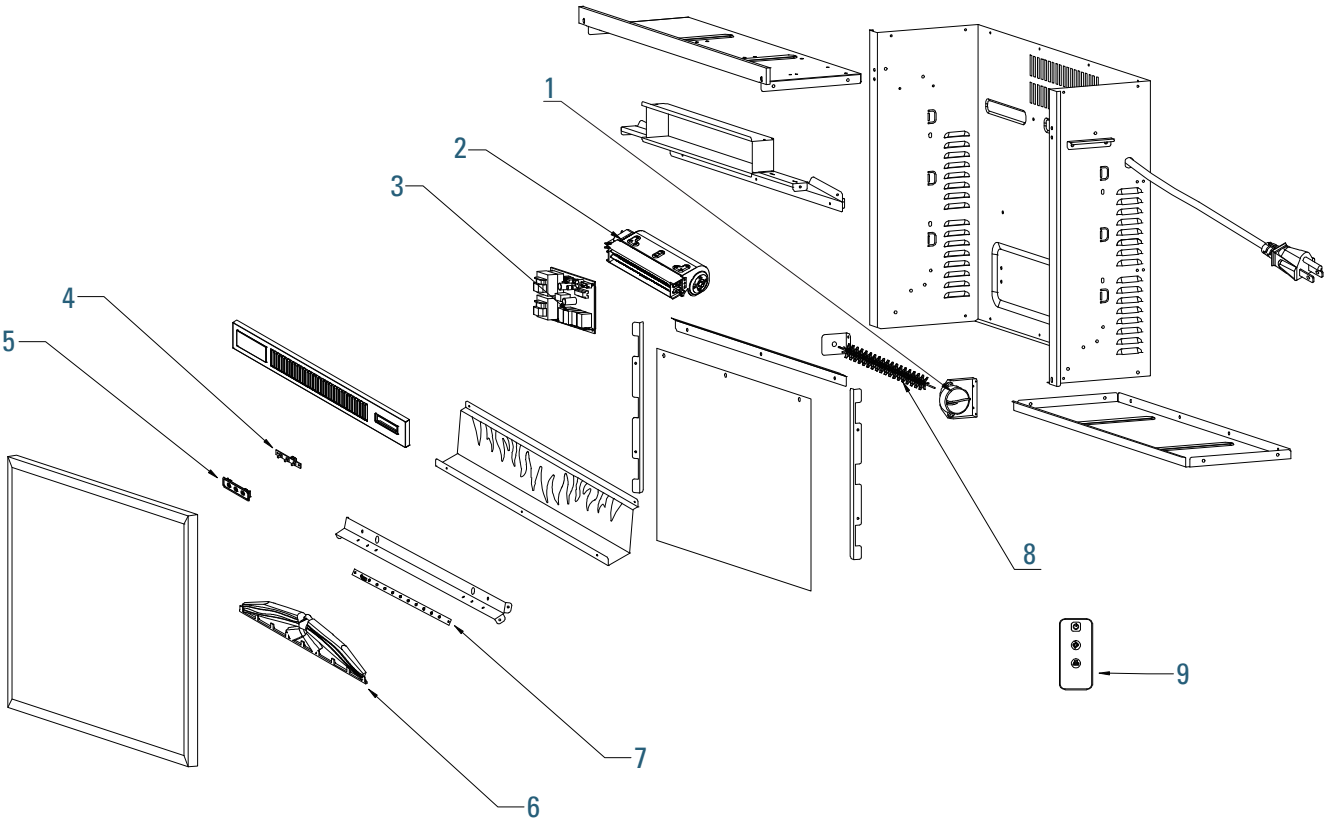


PROBLEM	SOLUTION
1. No power.	1a. Check that unit is plugged into a standard 120V outlet.
2. Flame effect does not work.	2a. Open bottom of unit, check to see if "spinner" is correctly mounted at the rear of unit. 2b. Check to see if spinning motor is functioning. if not, call customer service.
3. Heater doesn't work, but Power and Heater switches / buttons are in the "ON" position and thermostat (if applicable) is set on "HI".	3a. Turn all switches / buttons to the "OFF" position and unplug the unit from the wall outlet for 10 minutes. After 10 minutes plug the unit back into wall outlet, and operate as normal.
4. Other reasons that may cause heater not to operate: 4a. Incorrect operation. 4b. Defective heater switch. 4c. Defective heater assembly. 4d. Loose wiring. 4e. Dirty or clogged vents.	4a. Refer to operating instructions. 4b. Call Customer Service. 4c. Call Customer Service. 4d. Call Customer Service. 4e. Unplug the unit. Clear vent area of dust and debris. Wait ten minutes, plug the unit in again and turn on the heater.
5. The noise when the heater is on is louder than normal. 5a. The air intakes are dirty or obstructed. 5b. The blower/heater assembly is defective.	5a. Check the air intakes for obstructions or high dust build up. 5b. Contact Customer Service for a new heater/blower assembly.
6. Flame effect operates , but heater does not blow warm air.	6a. Check that heater switch / button is in "on" position. Switch should light up.
7. Problems with the assembly work.	7a. Call 1-877-483-6759.

For replacement parts, please call 1-877-483-6759, 7:00 am – 5:00 pm CST, Monday – Friday.

Part	Part Name	Part	Part Name
1	Flame Generator Drive Motor	6	Ember bed with Log
2	Heater / Blower Assembly	7	Flame Effect Circuit Board
3	Main Circuit Board	8	Flame Generator / Spinner
4	Control Panel Circuit Board	9	Remote Control
5	Control Panel Buttons		

Some parts and specifications may change without notice.



This For Living™ product carries a one (1) year warranty against defects in workmanship and materials. Trileaf Distribution agrees to replace the defective product free of charge within the stated warranty period, when returned by the original purchaser with proof of purchase. This product is not guaranteed against wear or breakage due to misuse and/or abuse.

