

CANVAS^{TM/MC}

GATINEAU ELECTRIC FIREPLACE

MODEL NO. 064-3156-0



ASSEMBLY INSTRUCTIONS

Toll-free: 1-888-670-6684

IMPORTANT: Please read this manual carefully before beginning assembly of this product. Keep this manual for future reference.

Important Safety Information	3
Parts List	6
Assembly	7
Operating Instructions	8
Cleaning and Maintenance	9
Troubleshooting Guide	11
Warranty	12



Warning! To reduce the risk of serious injury, read the following safety instructions before assembling and operating this fireplace.

This equipment has been tested and found to comply with the limits for Class B digital devices, pursuant to part 15 of the FCC rules. These limits are designed to provide reasonable protection against harmful interference in a residential installation. The equipment generates, uses and can radiate radio frequency energy and, if not installed and used in accordance with the instructions, may cause harmful interference to radio or television reception, which can be determined by turning the equipment off and on. The user is encouraged to try and correct the interference by one or more of the following measures:

- Reorient or relocate the receiving antenna.
- Increase the separation between the equipment and the receiver.
- Connect the equipment into an outlet on a circuit different from that to which the receiver is connected.
- Consult the dealer or an experienced radio/TV technician for help.

This device complies with Part 15 of the FCC rules. Operation is subject to the following two conditions:

1. This device may not cause harmful interference, and
2. This device must accept any interference received, including interference that may cause undesired operation.

Modifications not approved by the party responsible for compliance could void user's authority to operate the equipment.

This Class B digital apparatus complies with Canadian ICES-003.

IMPORTANT: Retain for future reference, and read carefully.

4 MODEL NO. 064-3156-0

When using electrical appliances, basic precautions should always be followed to reduce the rise of fire, electric shock and injury to persons, including the following:

Read all instructions before installing or using the fireplace.



DANGER: If the information in this manual is not followed exactly, an electric shock or fire may result causing property damage, personal injury or loss of life.



WARNING: This appliance is hot when in use. To avoid burns, DO NOT let bare skin touch hot surfaces. Keep combustible material, such as furniture, pillows, bedding, papers, clothes and curtains, at least 3' (1 m) from the front of the heater and keep them away from the side and rear.



WARNING: Extreme caution is necessary when any heater is used by or near children or individuals with disabilities and whenever the fireplace is left operating and unattended.



WARNING: DO NOT run cord under carpeting. DO NOT cover cord with throw rugs, runners, or similar covering. Arrange cord away from traffic areas and where it will not be tripped over.



WARNING: Do NOT insert or allow foreign objects to enter any ventilation or exhaust opening as this may cause an electric shock or fire, or damage the appliance.



WARNING: This appliance has hot and arcing or sparking parts inside. DO NOT use it in areas where gasoline, paint or flammable vapours or liquids are used or stored. This fireplace should not be used as a drying rack for clothing. Christmas stockings or decorations should not be hung in the area of it.

Use this appliance only as described in the manual. Any other use is NOT recommended by the manufacturer and may cause fire, electric shock or injury to persons.

CAUTION!

- If possible, ALWAYS unplug this appliance when not in use.
- DO NOT operate any heater with a damaged cord or plug or after the heater malfunctions.
- DO NOT operate any heater if it has been dropped or damaged in any manner. Disconnect power at service panel and have heater inspected by a reputable electrician before reusing.
- Any repairs to this fireplace should be carried out by a qualified service person.
- Under no circumstances should this fireplace be modified. Parts having to be removed for servicing must be replaced prior to operating this fireplace again.
- DO NOT use outdoors.
- This heater is not intended for use in bathrooms, laundry areas and similar indoor locations. NEVER place heater where it may fall into a bathtub or other water container.
- To disconnect this appliance, turn controls to the off position, then remove plug from outlet.
- ONLY connect to properly-grounded outlets.
- This appliance, when installed, must be electrically grounded in accordance with local codes, with the current CSA C22.1 Canadian Electrical Code or follow the National Electrical Code, ANSI/NFPA N0.70.
- To prevent a possible fire, DO NOT block air intakes or exhaust in any manner. DO NOT use on soft surfaces, like a bed, where opening may become blocked.
- The heaters MUST NOT be located immediately below a socket-outlet.
- ALWAYS plug heaters directly into a wall outlet/receptacle. NEVER use with an extension cord or relocatable power tap (outlet/power strip).

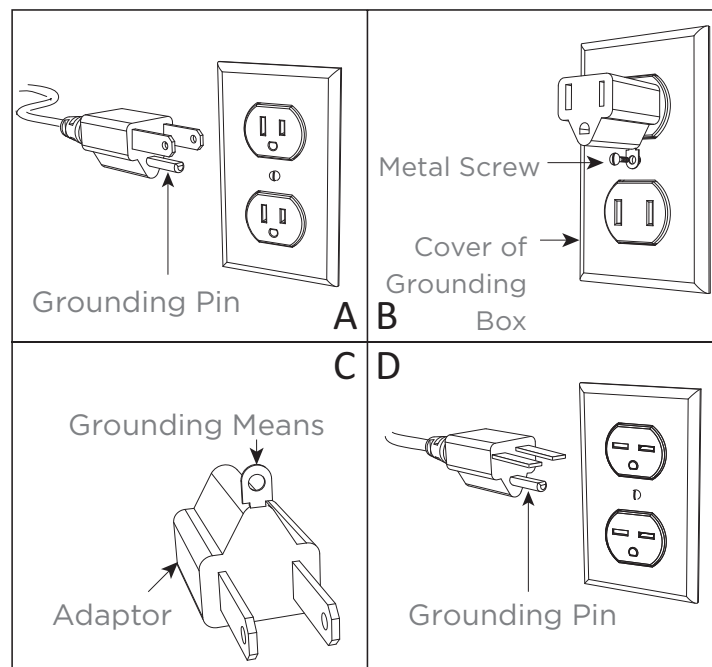
- There is a thermostat device provide inside of the unit. If the inner temperature overheats or abnormal heating occurs, the thermostat device will cut off power supply to prevent damage or risk of fire.
- DO NOT slide insert on top of wood to avoid scratching wood surface.
- DO NOT place any objects on top of insert and top air intake vents as this will cause unit to overheat and can cause a fire.

Electrical Specifications

Voltage	120 V AC, 60 Hz
Amps	11.7 A
Watts	1,400 W

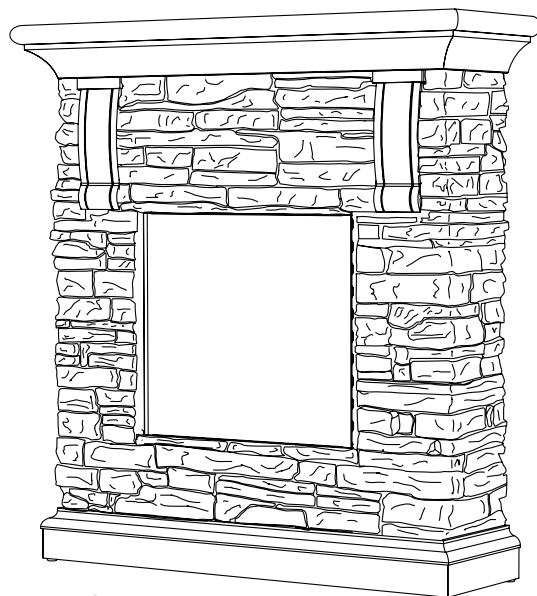
Electric Connection

- A 15 A, 120 V, 60 Hz circuit with a properly-grounded outlet is required. Preferably, the fireplace will be on a dedicated circuit as other appliances on the same circuit may cause the circuit breaker to trip or the fuse to blow when the heater is in operation. The unit comes standard with 6' (1.8 m) three-wire cord, exiting from the rear of the fireplace. DO NOT exceed the current rating of the current tap. ALWAYS plug heaters directly into a wall outlet/receptacle. NEVER use with an extension cord or relocatable power tap (outlet/power strip).
- This heater is for use on 120 V. The cord has a plug as shown below. See illustration for grounding instruction. An adaptor as shown in Fig. C is available for connecting three-blade grounding type plugs to two-slot receptacles. The green grounding plug extending from the adaptor must be connected to a permanent ground such as a properly-grounded outlet box. The adaptor should not be used if a three-slot grounded receptacle is available.



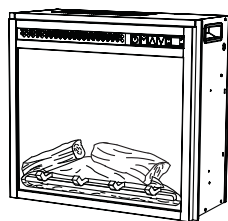
6 MODEL NO. 064-3156-0

The hardware in () is separated for backup.



1

Fireplace Mantel - 1



2

Fireplace Insert - 1



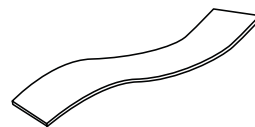
3

Remote Control - 1



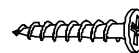
4

Touch-up Pen - 1



A

Safety Mounting Tap - 2



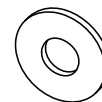
B

Screw for Mantel - 2 + (1)



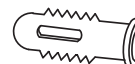
C

Screw for Wall Anchor - 2 + (1)



D

Washer - 4 + (1)



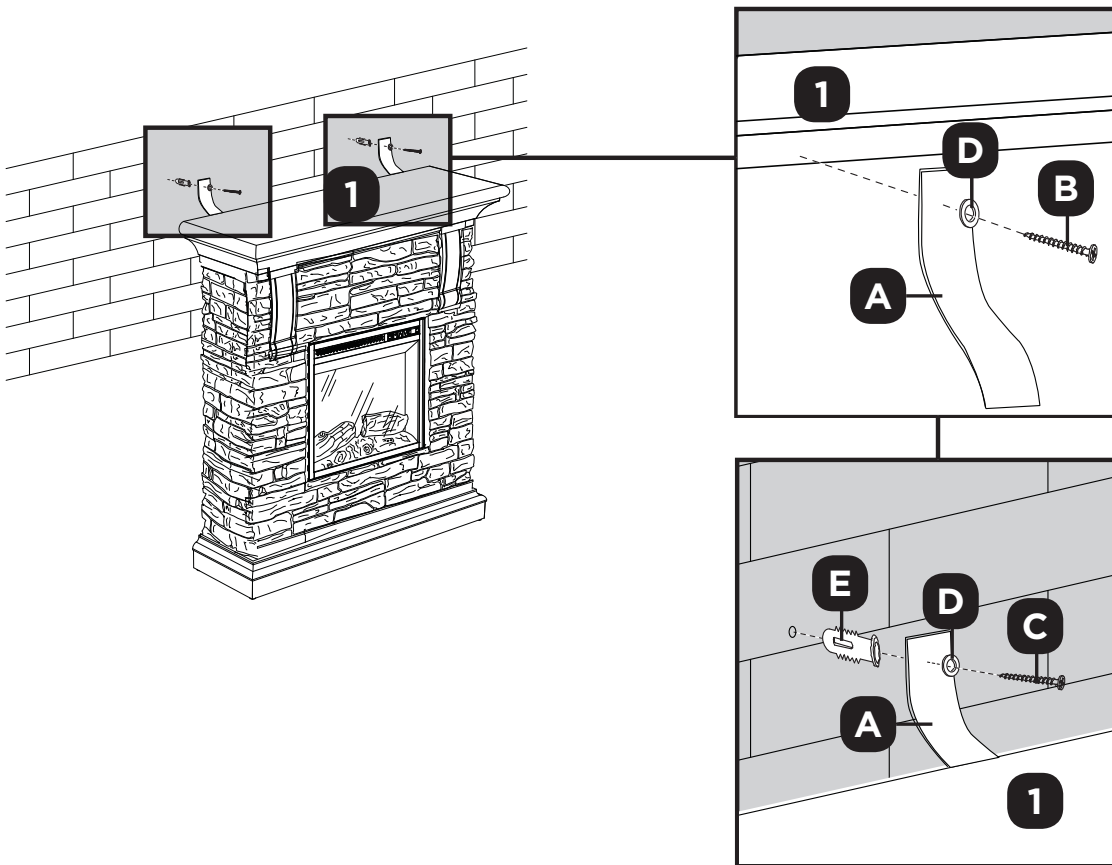
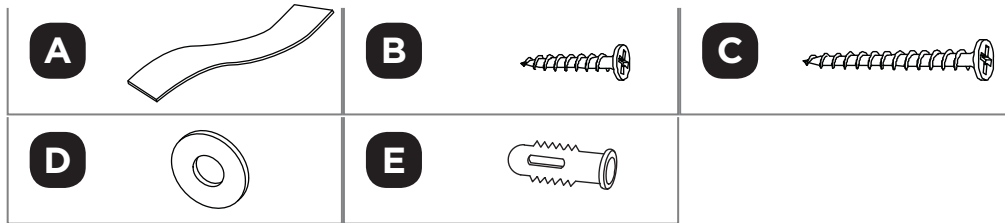
E

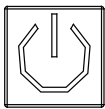
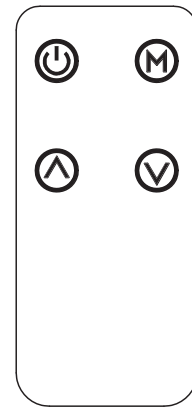
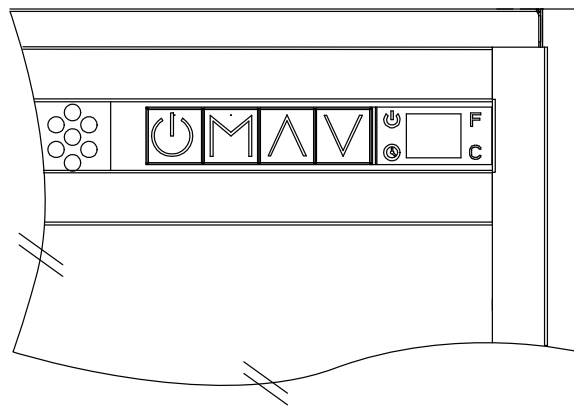
Wall Anchor - 2

Step 1

Requires **1, A, B, C, D, E**

Drill two holes into the wall and insert wall anchor **E**. Then install the safety mounting tape **A** on top rear of mantel **1** using washer **D** and screw **B**. Attach opposing side of the safety mounting tape **A** using washer **D** and screw **C** fastened into wall anchor.





Power Button

- Pressing the power button will turn the unit ON or OFF.
- When the unit is in ON mode, the power icon indicator light will glow green.
- When the unit is in OFF mode, the power icon indicator light will glow red. If the heater is working when the unit is powered OFF, the fan will continue to run for another 20 seconds to ensure heat will not be trapped inside the unit.

Note: Each time the unit is plugged in, the fan and heater will turn on for 5 seconds as a programmed internal check.

Note: Unless the main power is interrupted, the unit will remember the last heating level and flame brightness settings.



Mode Button

- Press the mode button to cycle through the different functions. Each time the mode button is pressed, the mode will rotate through temperature, timer, or flame brightness modes.

Temperature Setting

- The temperature mode controls the heater's thermostat setting.
- Press the up arrow button or down arrow button to scroll through the pre-set temperature range from 15 to 30°C (59 to 86°F).
- Hold the mode button for 3 seconds. This allows the unit to change from °C to °F or °F to °C. The unit default is °F.

Note: This function is only available if using the control panel.

- When the ambient temperature is higher than the set temperature, heater will turn off automatically.

Timer Setting

- The timer mode should be used to set the countdown for the unit's main power.
- Press the up arrow button or down arrow button to adjust the timer setting from 0 hour (OFF) to 9 hours with 0.5 hour intervals.

Flame Brightness Setting

- The flame brightness mode is used to set the flame brightness.
- Use the up arrow button or down arrow button to scroll through the flame brightness settings: F0 (flame off, lowest brightness of ember bed), F1, F2, F3, F4, F5 (brightest).



Up Arrow Button

- Use up arrow button to increase the setting of the selected function.



Down Arrow Button

- Use down arrow button to decrease the setting of the selected function.

Child Lock

Activate Child Lock

- When the unit is ON, hold the POWER button for 10 seconds to activate the child lock function. E3 will be displayed and the unit will beep 3 times indicating that the child lock function is activated. All function keys are locked. When any button is pressed, E3 will show on the display indicating that the child lock function is activated.

Deactivate Child Lock

- To deactivate the child lock function, hold the POWER button for 10 seconds.

Note: The child lock function is only available if using the control panel.

Care and Maintenance

- Make sure the unit is turned OFF, unplugged and the heating elements of heater are cool whenever you are cleaning the heater.
- Clean the metal trim using a water-dampened soft, clean cloth. DO NOT use brass polish or household cleaners as these products will damage the metal trim.
- The motors used on the fan and the flame generator assembly are pre-lubricated for extended bearing life and require no further lubrication. However, periodic cleaning/vacuuming of the fan/heater and air intake/output vents is recommended.
- Any other servicing should be performed by an authorized service representative.



WARNING: Make sure the power is turned off before proceeding. Any electrical repairs or rewiring of this unit should be carried out by a licensed electrician in accordance with national and local codes.

If repairing or replacing an electrical component or wiring, the original wire routing, colour coding and securing locations must be followed.



WARNING: Electrical outlet wiring must comply with local building codes and other applicable regulations to reduce the risk of fire, electric shock and injury to persons.



WARNING: Do not use this fireplace if any part of it has been under water. Immediately call a qualified service technician to inspect the fireplace and replace any part of the electrical system.



WARNING: Disconnect power before attempting any maintenance or cleaning to reduce the risk of fire, electric shock or personal injury.

WARNING: During any service of this appliance, the power to the unit must be turned off. First turn the main power switch to the "OFF" position. Then remove the electrical plug from the wall outlet.

Replacing the Remote Control Battery

When the remote control stops operating or its range seems reduced, it is time to replace the battery. Note: The battery should be removed if the product is to be left unused for a long time.

Caution: Non-rechargeable batteries must not be recharged. Exhausted battery is to be removed from the product.

1. The battery compartment is located on the back end of the remote control.
2. Press the small tab inward as you slide the battery door open and remove the old battery.
3. Insert a new CR2025 lithium battery (not included), ensuring the polarities of the battery match the inside of the battery compartment.
4. Re-insert the battery door.

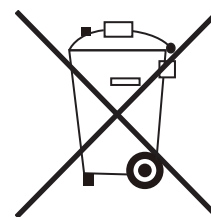
Disposal of Used Battery

A battery may contain hazardous substances that could be dangerous to the environment and human health.

This symbol marked on the battery and/or packaging indicates that used battery shall not be treated as municipal waste. Instead it shall be left at the appropriate collection point for recycling.

By ensuring the used battery is disposed of correctly, you will help prevent potential negative consequences for the environment and human health. The recycling of materials will help to conserve natural resources.

For more information about collection and recycling of used batteries, please contact your local municipality, your waste disposal service or the point of sale where you purchased this item.



PROBLEM	POSSIBLE CAUSE	SOLUTION
No power. Logs do not glow.	The unit does not have power.	Check that unit is plugged into a standard 120 V outlet. Then make sure power is set at "ON" position.
E1 displayed on control panel with beep sound.	The overheat sensor has been engaged.	Unplug unit, wait 5-10 minutes, then the sensor will reset itself. Plug the unit back in and turn on the heater. If the problem persists, call customer service.
E2 displayed on control panel.	The ambient temperature sensor is broken or not working correctly.	Unplug unit, wait 5-10 minutes, then the sensor will reset itself. Plug the unit back in and turn on the heater. If the problem persists, call customer service.
E3 displayed on control panel.	Child lock function is active.	To inactivate the child lock function, holding the POWER button for 10 seconds.
Fan motor continues to blow after unit is powered off.	Normal operation.	This is a standard feature; the blower runs for an additional 20 seconds to ensure heat will not be trapped inside the unit.
Power cord gets warm to the touch.	Normal operation.	This is normal for a heater appliance as it requires more current to operate. Check the connections of the appliance cord and the outlet. Make sure the plug fits tightly into the outlet. During use, check the plug and outlet frequently to determine if it is HOT; if so, discontinue use of the appliance and consult with a qualified electrician to check or change the overheating outlet(s).

12 MODEL NO. 064-3156-0

This CANVAS product carries a one (1) year warranty against defects in workmanship and materials. Trileaf Distribution agrees to replace the defective product free of charge within the stated warranty period, when returned by the original purchaser with proof of purchase. This product is not guaranteed against wear or breakage due to misuse and/or abuse.