

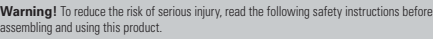


Toll-free: 1-877-483-6759

Made in China
Imported by Trileaf Distribution Trifeuil Toronto, Canada M4S 2B8



Table of Contents



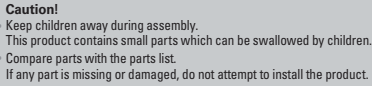
- Please read and understand this entire manual before attempting to assemble, operate, or install the product.

IMPORTANT: RETAIN FOR FUTURE REFERENCE, AND READ CAREFULLY.

Parts List

- A** Thread sealant tape -1

5



Let us help you

DO NOT RETURN YOUR PRODUCT TO THE STORE. CALL US FIRST!
1-877-483-6759

If you have questions regarding your product, require warranty assistance, or have damaged or missing parts, please call our customer service toll-free helpline. Contact us for assistance; we're here to help.

IMPORTANT: Please read and understand this manual before any assembly. Before beginning assembly of product, make sure all parts are present. Compare parts with packaging contents list. If any part is missing, or if you have any questions, contact the service centre at 1-877-483-6759 (toll free).

Place all parts from the box in a cleared area and position them on the floor in front of you. Remove all packing materials and place them back into the box. Do not dispose of the packing materials until assembly is complete. Read each step carefully before beginning any assembly and make sure you understand each step. If you are missing a part, please call our toll-free number for assistance at 1-877-483-6759.

Needed for assembly:



Wren

1 people

Assembly

Step 1

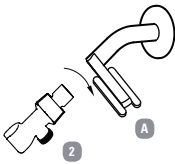
Remove the existing shower head (counter-clockwise) with a wrench. Clean the shower arm thread.



Step 2

Requires 2, A

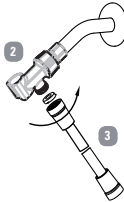
Apply the new thread sealant tape **A** to the shower arm. Hand-tighten the shower arm mount **2** (clockwise) onto the shower arm.



Step 3

Requires 2, 3

Insert the washer. Attach the hose (clockwise) to the 1/2" (12.5 mm) outlet on the shower arm mount.

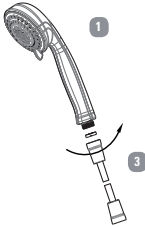


7

Step 4

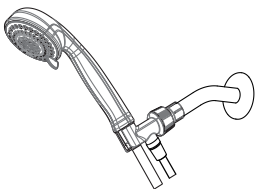
Requires 3, 1

Insert the washer. Attach the other end of the hose **3** to the hand-held shower **1** (clockwise).



Step 5

Turn on the water supply, check for leaks, and tighten as needed.



Cleaning and Maintenance

- Preserve the finish of the hand-held shower using a non-abrasive wax.
- When using non-abrasive cleaners, rinse off immediately when finished cleaning the hand-held shower.
- Do not use abrasive cleaners when cleaning this hand-held shower.

Technical Data

Dimensions (L x W x H)	6 7/8 x 3 11/16 x 10 3/8"
	175 x 93 x 263 mm
Product weight	1.1 lb
	495 g
Max flow rate:	1.5 GPM (5.7 L/min)
Min flow rate:	1.1 GPM (4.2 L/min)
Meets A112 18.1 / 1.5 GPM (5.7 L/min) Max cUPC	
For use with automatic compensating valves rated at 1.1 GPM (4.2 L/min) or less	



Warranty

This For Living product carries a one (1) year warranty against defects in workmanship and materials. Trileaf Distribution agrees to replace a defective product free of charge within the stated warranty period, when returned by the original purchaser with proof of purchase. This product is not guaranteed against wear or breakage due to misuse and/or abuse.

