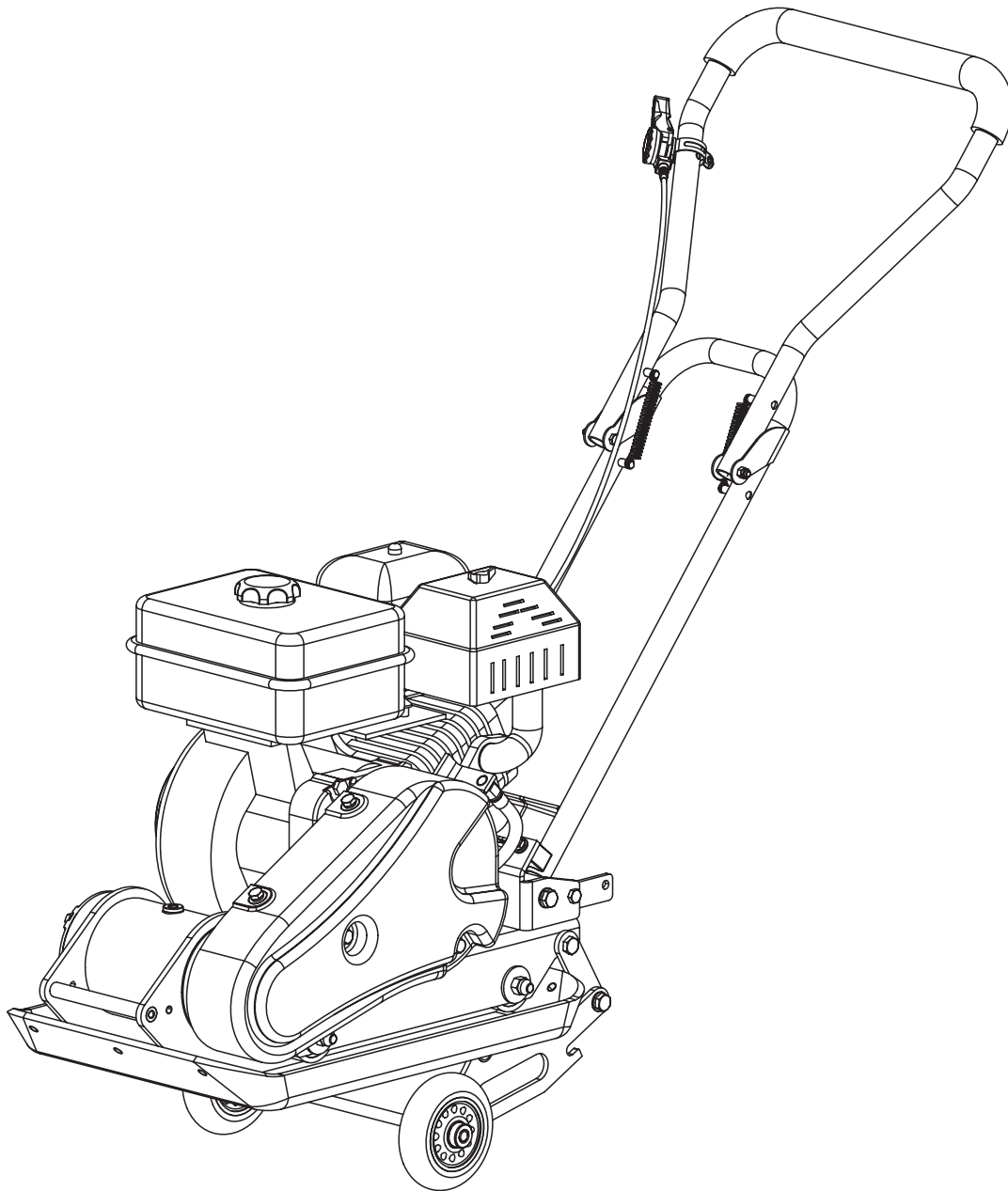


# Vibratory Plate Compactor

060-3798-0



## Use and Care Guide

Keep the original box, packaging, and purchase receipt. Please read and understand this manual before any assembly or use. Before beginning assembly of product, make sure all parts are present. Compare parts with packaging contents list. If any part is missing, or if you have any questions, contact the vendor's customer service department at 1-866-567-4089.



# Table of Contents

---

1. IMPORTANT PRECAUTIONS .....	3
1.1 DEFINITIONS .....	3
1.2 CHILD SAFETY .....	3
1.3 SAFETY WARNINGS .....	3
2. PARTS LIST .....	7
2.1 COMPACTOR PARTS .....	7
2.2 FASTENERS .....	7
3. ASSEMBLY INSTRUCTIONS .....	8
3.1 ASSEMBLY PREPARATION .....	8
3.2 HANDLE .....	8
3.3 FOLDING WHEELS KIT .....	8
3.4 ENGINE OIL .....	9
4. KNOW YOUR COMPACTOR .....	10
4.1 FUEL VALVE CONTROL .....	10
4.2 THROTTLE CONTROL .....	10
4.3 ENGINE SWITCH .....	10
4.4 CHOKE LEVER .....	10
4.5 RECOIL STARTER GRIP .....	10
4.6 OIL DRAIN HOSE .....	11
4.7 EXCITER .....	11
5. OPERATING INSTRUCTIONS .....	12
5.1 ADDING FUEL .....	12
5.2 STARTING ENGINE .....	12
5.3 RECOIL STARTER .....	12
5.4 OPERATING .....	12
5.5 STOPPING ENGINE .....	13
5.6 IDLE SPEED .....	13
6. MAINTENANCE .....	13
6.1 PREVENTIVE MAINTENANCE .....	13
6.2 CHECKING V-BELT(S) .....	13
6.3 TENSIONING V-BELT(S) .....	14
6.4 REPLACING V-BELT(S) .....	14
6.5 EXCITER LUBRICATION .....	15
6.6 ENGINE MAINTENANCE .....	15
7. STORAGE .....	16
8. LIFTING / TRANSPORTING .....	16
9. TECHNICAL SPECIFICATIONS .....	17
10. TROUBLESHOOTING .....	17
11. PARTS SCHEMATIC .....	18
12. PARTS REFERENCE LIST .....	19
13. WARRANTY .....	20

---


## 1. IMPORTANT PRECAUTIONS

### IMPORTANT, RETAIN FOR FUTURE REFERENCE AND READ CAREFULLY!

Do not attempt to install or operate this product until you have read the safety instructions in this manual. Safety items throughout this manual are labelled with **Danger, Warning, or Caution** based on the risk type.

Read and understand this manual and the labels affixed to the compactor. Learn its applications and limitations as well as the specific potential hazards particular to it. Become familiar with the controls before operating this compactor.

#### 1.1 Definitions

 This is the safety alert symbol. It is used to alert you to potential personal injury hazards. Obey all safety messages that follow this symbol to avoid possible injury or death.

#### DANGER

Indicates an imminently hazardous situation which, if not avoided, will result in death or serious injury.

#### WARNING

Indicates a potentially hazardous situation which, if not avoided, could result in death or serious injury.

#### CAUTION

Indicates a potentially hazardous situation which, if not avoided, could result in minor or moderate injury.

#### IMPORTANT

Installation, operation, or maintenance information which is important but not hazard-related.

#### 1.2 Child Safety

##### Packing materials:

- Packing cartons covered with rugs, bedspreads, plastic sheets, or stretch wrap may become airtight chambers and can quickly cause suffocation.
- Destroy or recycle the product's carton, plastic bags, and any other exterior wrapping material immediately after the product is unpacked. Children should never play with these items.



##### **Danger of suffocation!**

- To reduce the risk of injury, do not operate the compactor near children.

#### 1.3 Safety Warnings

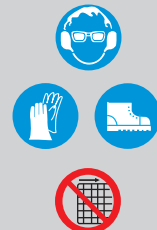
##### IMPORTANT – ENVIRONMENTAL

- Recycle unwanted materials instead of disposing of them as waste. All tools, hoses and packaging should be resorted, taken to the local recycling centre and disposed of in an environmentally safe way.



##### WARNING – WEAR PROTECTIVE EQUIPMENT

- Use safety equipment. Always wear eye and hearing protection, safety footwear, gloves and helmets.
- It is forbidden to remove or tamper with the protection devices and safety devices.



##### WARNING – AVOID ACCIDENTS

- Keep away from rotating parts.
- Do not touch parts which are hot from operation. Serious burns may result.



# 4 Important Precautions

## 1. IMPORTANT PRECAUTIONS (CONT'D)

### 1.3 Safety Warnings (cont'd)

#### **WARNING**

- Do not smoke or have open flames.
- Use extreme caution when storing, handling and using fuels, as they are highly volatile and explosive in vapour state.



#### **IMPORTANT – KEEP VISITORS AWAY**

- Keep children and bystanders off and away.



#### **CAUTION – UNDERSTAND YOUR MACHINE**

- Read and understand the operator's manual and labels affixed to the machine. Learn its application and limitations as well as the specific potential hazards peculiar to it.
- Be thoroughly familiar with the controls and their proper operation. Know how to stop the machine and disengage the controls quickly.
- Make sure to read and understand all the instructions and safety precautions as outlined in the **Engine Manual**, packed separately with your unit. Do not attempt to operate the machine until you fully understand how to properly operate and maintain the **Engine** and how to avoid accidental injuries and/or property damage.

#### **WARNING – WORK AREA**

- Never start or run the engine inside a closed area.
- The exhaust fumes are dangerous, containing carbon monoxide, an odourless and deadly gas. Operate this unit only in a well ventilated outdoor area.
- Never operate the machine without good visibility or light.

#### **CAUTION – PERSONAL SAFETY**

- Do not operate the machine while under the influence of drugs, alcohol, or any medication that could affect your ability to use it properly.
- Dress properly. Wear heavy long pants, boots and gloves. Do not wear loose clothing, short pants, jewellery of any kind. Secure long hair so it is above shoulder level. Keep your hair, clothing and gloves away from moving parts. Loose clothes, jewellery or long hair can be caught in moving parts.
- Check your machine before starting it. Keep guards in place and in working order. Make sure all nuts, bolts, etc. are securely tightened.
- Never operate the machine when it is in need of repair or is in poor mechanical condition. Replace damaged, missing or failed parts before using it. Check for fuel leaks. Keep the machine in safe working condition.
- Do not use the machine if the engine's switch does not turn it on or off. Any gasoline powered machine that can not be controlled with the engine switch is dangerous and must be replaced.
- Form a habit of checking to see that keys and adjusting wrenches are removed from machine area before starting it. A wrench or a key that is left attached to a rotating part of the machine may result in personal injury.
- Stay alert, watch what you are doing and use common sense when operating the machine.
- Do not overreach. Do not operate the machine while barefoot or when wearing sandals or similar lightweight footwear. Wear protective footwear that will protect your feet and improve your footing on slippery surfaces. Keep proper footing and balance at all times. This enables better control of the machine in unexpected situations.
- Avoid accidental starting. Be sure the engine's switch is off before transporting the machine or performing any maintenance or service on the unit. Transporting or performing maintenance or service on a machine with its switch on invites accidents.

## 1. IMPORTANT PRECAUTIONS (CONT'D)

### 1.3 Safety Warnings (cont'd)



#### **WARNING – FUEL SAFETY**

- Fuel is highly flammable, and its vapours can explode if ignited. Take precautions when using to reduce the chance of serious personal injury.
- When refilling or draining the fuel tank, use an approved fuel storage container while in a clean, well-ventilated outdoor area. Do not smoke, or allow sparks, open flames or other sources of ignition near the area while adding fuel or operating the unit. Never fill fuel tank indoors.
- Keep grounded conductive objects, such as tools, away from exposed, live electrical parts and connections to avoid sparking or arcing. These events could ignite fumes or vapours.
- Always stop the engine and allow it to cool before filling the fuel tank. Never remove the cap of the fuel tank or add fuel while the engine is running or when the engine is hot. Do not operate the machine with known leaks in the fuel system.
- Loosen the fuel tank cap slowly to relieve any pressure in the tank.
- Never overfill fuel tank (there should be no fuel above the upper limit mark).
- Replace all fuel tank and container caps securely and wipe up spilled fuel. Never operate the unit without the fuel cap securely in place.
- Replace all fuel tank and container caps securely and wipe up spilled fuel. Never operate the unit without the fuel cap securely in place.
- Avoid creating a source of ignition for spilled fuel. If fuel is spilled, do not attempt to start the engine but move the machine away from the area of spillage and avoid creating any source of ignition until fuel vapours have dissipated.
- Store fuel in containers specifically designed and approved for this purpose.
- Store fuel in a cool, well-ventilated area, safely away from sparks, open flames or other sources of ignition.
- Never store fuel or machine with fuel in the tank inside a building where fumes may reach a spark, open flame, or any other source of ignition, such as a water heater, furnace, clothes dryer and the like. Allow the engine to cool before storing in any enclosure.



#### **IMPORTANT – MACHINE USE AND CARE**

- Never pick up or carry a machine while the engine is running.
- Do not force the machine. Use the correct machine for your application. The correct machine will do the job better and safer at the rate for which it was designed.
- Do not change the engine governor settings or over-speed the engine. The governor controls the maximum safe operating speed of the engine.
- Do not run the engine at a high speed when you are not pounding.
- Do not put hands or feet near rotating parts.
- Avoid contact with hot fuel, oil, exhaust fumes and hot surfaces. Do not touch the engine or muffler. These parts get extremely hot from operation. They remain hot for a short time after you turn off the unit. Allow the engine to cool before doing maintenance or making adjustments.
- If the machine should start to make an unusual noise or vibration, immediately shut off the engine, disconnect the spark plug wire, and check for the cause. Unusual noise or vibration is generally a warning sign of trouble.
- Use only attachments and accessories approved by the manufacturer. Failure to do so can result in personal injury.
- Maintain the machine. Check for misalignment or binding of moving parts, breakage of parts and any other condition that may affect the machine's operation. If damaged, have the machine repaired before use. Many accidents are caused by poorly maintained equipment.
- Keep the engine and muffler free of grass, leaves, excessive grease or carbon build-up to reduce the chance of a fire hazard.
- Never douse or squirt the unit with water or any other liquid. Keep handles dry, clean and free from debris. Clean after each use.
- Observe proper disposal laws and regulations for gas, oil, etc. to protect the environment.
- Store idle machine out of the reach of children and do not allow persons unfamiliar with the machine or these instructions to operate it. Machine is dangerous in the hands of untrained users.

# 6 Important Precautions

## 1. IMPORTANT PRECAUTIONS (CONT'D)

### 1.3 Safety Warnings (cont'd)



#### IMPORTANT – SERVICE

- Before cleaning, repairing, inspecting, or adjusting, shut off the engine and make certain all moving parts have stopped. Always make sure the engine's switch is in its "OFF" position. Disconnect the spark plug wire, and keep the wire away from the plug to prevent accidental starting.
- Have your machine serviced by a qualified repair person using only identical replacement parts. This will ensure that the safety of the machine is maintained.

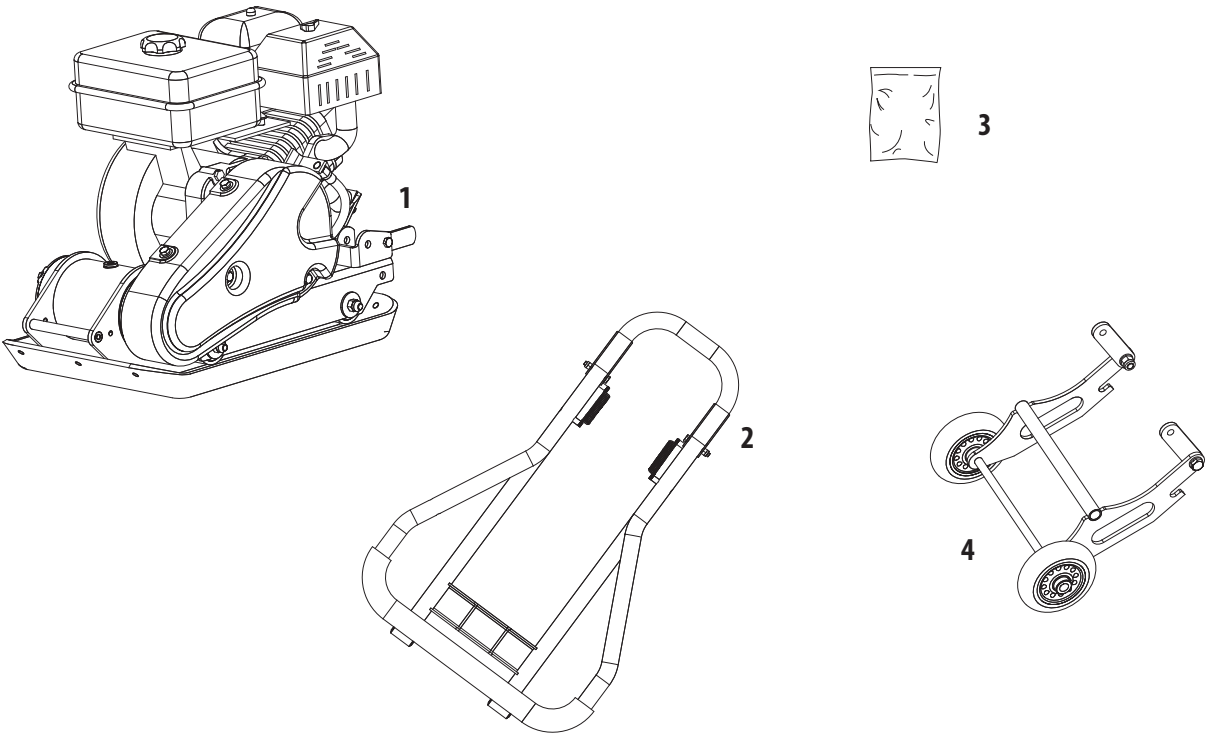


#### WARNING – SPECIFIC SAFETY RULES

- To avoid injury, keep hands, fingers and feet away from the base plate. Grip the handle of the plate compactor firmly with both hands. If both hands are holding the handle and your feet are clear of the compactor base, your hands, fingers and feet can not be injured by the compactor base.
- Always operate the machine from behind, never pass or stand in front of the machine when the engine is running.
- Never place tools or any other item under the plate compactor.
- If the unit strikes a foreign object, stop the engine, disconnect the spark plug, thoroughly inspect the machine for any damage, and repair the damage before restarting and operating the machine.
- Do not overload the machine capacity by compacting too deep in a single pass or at too fast a rate.
- Never operate the unit at high transport speeds on hard or slippery surfaces.
- Exercise extreme caution when operating on or crossing gravel drives, walks, or roads. Stay alert for hidden hazards or traffic. Do not carry passengers.
- Never leave the operating position and leave the plate compactor unattended when the engine is running.
- Always stop the engine when compacting is delayed or when walking from one location to another.
- Stay away from the edges of ditches and avoid actions that may cause the plate compactor to topple over.

- Always ascend slopes carefully, in a direct path and in reverse to prevent the plate compactor from toppling over onto the operator.
- Always park the unit on a firm and level surface and shut the tool off.
- To reduce exposure to vibration, limit the hours of operation and take periodic breaks to minimize repetition and rest your hand. Reduce the speed and force you use for the repetitive movement. Try to fill each day with jobs where operating hand-held power equipment is not required.

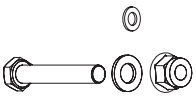

2. PARTS LIST



2.1 Compactor Parts

Item #	Part Name	Qty.
1	Plate Compactor Chassis with Engine and Transmission	1
2	Handle	1
3	Hardware Bag	1
4	Folding Wheels Kit	1

2.2 Fasteners

Ref.	Description	Qty.	Illustration
A	Ø5	1	
	M10x65	2	
B	M10x30	2	

# 8 Assembly Instructions

## 3. ASSEMBLY INSTRUCTIONS

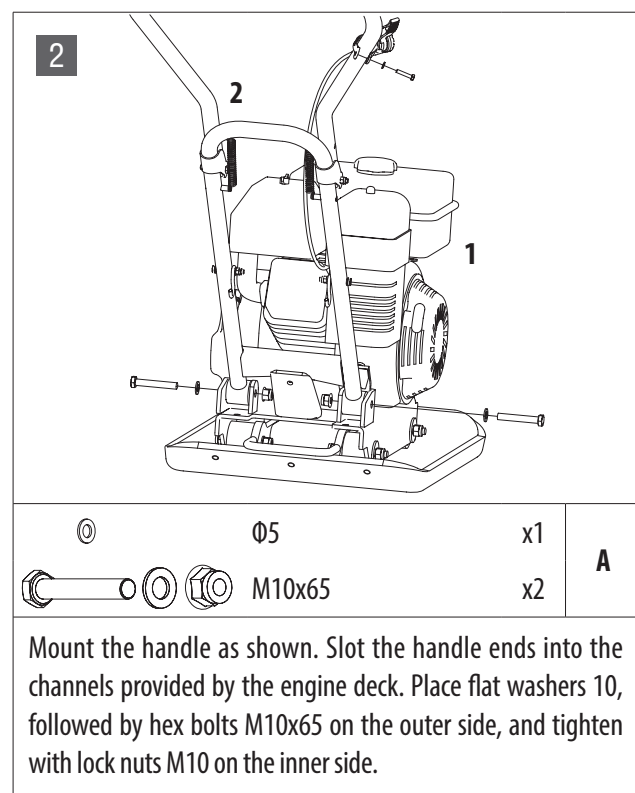
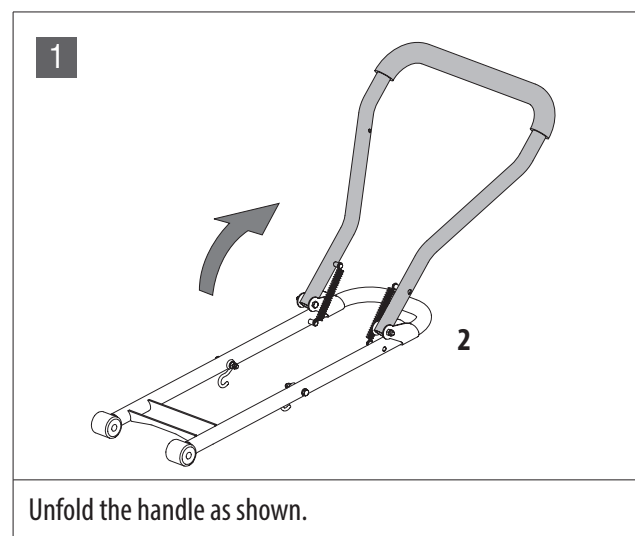
### 3.1 Assembly Preparation

#### ➔ IMPORTANT

- The compactor should be assembled by at least two people.
- Read all assembly instructions thoroughly before assembling the compactor.

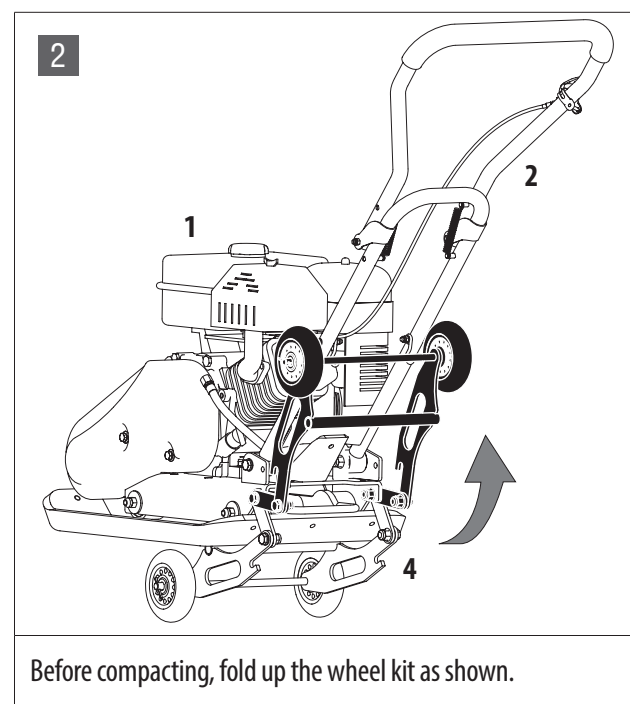
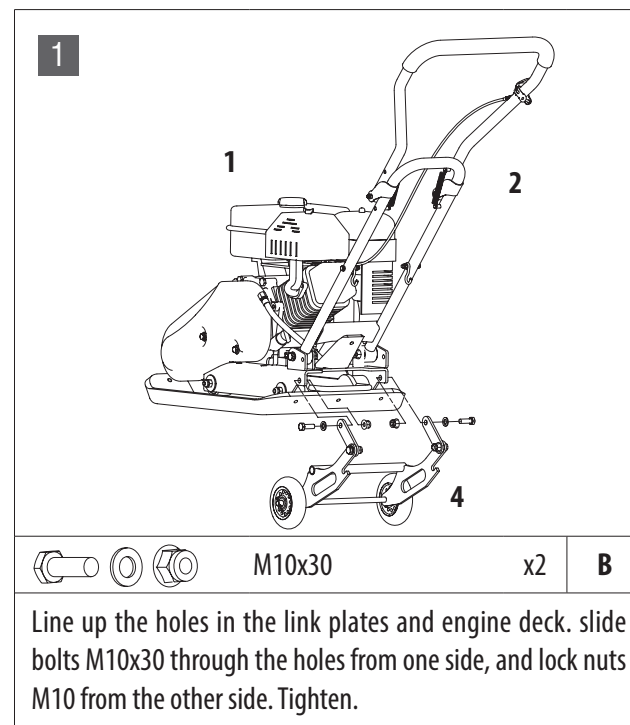


### 3.2 Handle



Secure the throttle control onto the upper handle with a flat washer 5 and a bolt 5x25.  
Fasten the throttle control cable with cable fasteners.

### 3.3 Folding Wheels Kit





## 3. ASSEMBLY INSTRUCTIONS (CONT'D)

### 3.4 Engine Oil



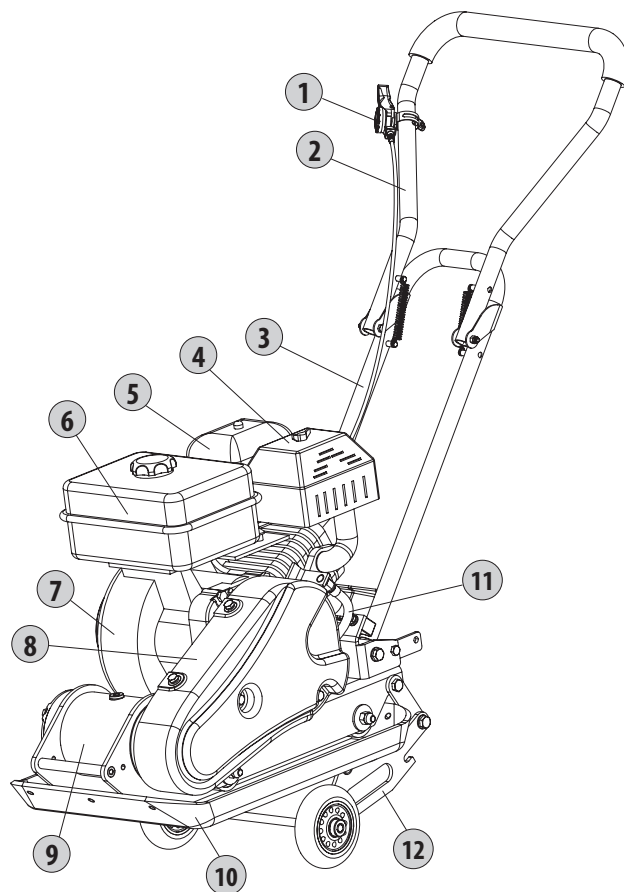
#### IMPORTANT

- Oil has been drained for shipping.
- Failure to fill engine sump with oil before starting engine will result in permanent damage and will void engine warranty.

Add oil according to **Engine** Manual packed separately with your compactor.

# 10 Know Your Compactor

## 4. KNOW YOUR COMPACTOR



Item #	Part Name
1	Throttle Control
2	Upper Handle
3	Lower Handle
4	Muffler
5	Air Cleaner
6	Fuel Tank
7	Engine
8	Belt Guard
9	Exciter
10	Base Plate
11	Oil Drain Hose
12	Folding Wheels Kit

### 4.1 Fuel Valve Control

The fuel valve opens and closes the passage between the fuel tank and the carburetor. The fuel valve lever must be in the ON position for the engine to run. When the engine is not in use, leave the fuel valve lever in the OFF position to prevent carburetor flooding and to reduce the possibility of fuel leakage.

### 4.2 Throttle Control

The throttle lever controls engine speed. Moving the throttle lever makes the engine run faster or slower.

### 4.3 Engine Switch

The engine switch enables and disables the ignition system. The engine switch must be in the ON position for the engine to run. Turning the engine switch to the OFF position stops the engine.

### 4.4 Choke Lever

The choke lever opens and closes the choke valve in the carburetor. The closed position enriches the fuel mixture for starting a cold engine.

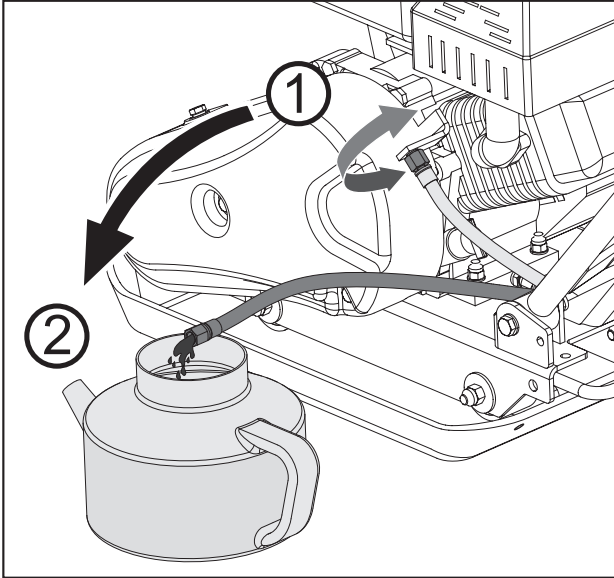
The open position provides the correct fuel mixture for operation after starting, and for restarting a warm engine. Some engine applications use a remotely-mounted choke control rather than the engine-mounted choke lever.

### 4.5 Recoil Starter Grip

Pulling the starter grip operates the recoil starter to crank the engine.

## 4. KNOW YOUR COMPACTOR (CONT'D)

### 4.6 Oil Drain Hose



Running the engine with dirty oil can cause premature engine wear and failure. Changing oil regularly is extremely important. The flexible oil drain hose is equipped to drain oil into an appropriate receptacle.

### 4.7 Exciter

An eccentric weight mounted on the exciter shaft contained within the exciter housing is driven at high speed by a clutch and belt drive system. This high speed shaft revolution causes the rapid lifting and downward ramming motion of the machine as well as imparting a forward motion.

# 12 Operating Instructions

## 5. OPERATING INSTRUCTIONS

### 5.1 Adding Fuel

Fill the fuel tank as instructed in the separate **Engine Manual** packed with the plate compactor.

A more detailed description of the engine operation and all related precautions and procedures can be found in the **Engine Manual** packed separately with the unit.

### 5.2 Starting Engine

1. Move the fuel valve lever to the ON position.
2. To start a cold engine, move the choke to the CLOSE position. To restart a warm engine, leave the choke lever in the OPEN position.
3. Move the throttle lever away from the SLOW position, about 1/3 of the way towards the FAST position.
4. Turn the engine switch to the ON position.
5. Operate the starter.

### 5.3 Recoil Starter

Pull the starter grip lightly until you feel resistance, then pull briskly, return the starter grip gently.

If the choke lever has been moved to the CLOSE position to start the engine, gradually move it to the open position as the engine warms up.

### 5.4 Operating

#### WARNING

- Do not operate plate on concrete or on extremely hard, dry, compacted surfaces. The plate will jump rather than vibrate, which could damage both plate and engine.

1. After engine warms up, pull throttle lever to accelerate engine speed. Plate will begin vibrating and move forward.
2. The plate compactor is designed to run at an engine speed (engine take off shaft) of 3600 RPM (normally considered full throttle). Running the engine at a lower RPM will result in

a decrease of compaction force and lower travel speed. It will create excessive "out-of-synch" vibrations resulting in poor compaction, manoeuvrability, excessive wear to the machine, and discomfort to the operator.

3. When operating, guide the machine, but let the compactor do the work. Bearing down on the handle is unnecessary and causes shock absorber wear.
4. On level surfaces the compactor moves forward rapidly. On uneven surfaces or inclines, light forward pressure on handle may be required to assist the compactor in moving forward.
5. The number of passes required to reach a desired compaction level will depend on the type and moisture content of soil. Maximum soil compaction has been reached when excessive kickback is noticed.

#### IMPORTANT

- When using a compactor on asphalt, a water sprinkler kit is required to help prevent the bottom plate from adhering to the hot asphalt surface.

#### IMPORTANT

- When using plate on paving stones, attach a pad to the bottom of the plate to prevent chipping or grinding the surface of the stones. A special urethane pad designed for this purpose is available as an optional accessory.

#### IMPORTANT

- While a certain amount of moisture in the soil is necessary, excessive moisture may cause soil particles to stick together and prevent good compaction. If soil is extremely wet, allow it to dry somewhat before compacting.

#### IMPORTANT

- If soil is so dry as to create dust clouds while operating plate, some moisture should be added to the ground material to improve compacting. This will also reduce service to the air filter.

## 5. OPERATING INSTRUCTIONS (CONT'D)

### 5.5 Stopping the Engine

To stop the engine in an emergency, simply turn the engine switch to the **OFF** position. Under normal conditions, use the following procedure.

1. Move the throttle lever to the **SLOW** position.
2. Let engine idle for one or two minutes.
3. Turn the engine switch to the **OFF** position.
4. Turn the fuel valve lever to the **OFF** position.



#### **DANGER**

- Do not move choke control to **CLOSE** to stop engine. Backfire or engine damage may occur.

### 5.6 Idle Speed

Set throttle control lever to its "low" position to reduce stress on the engine when compacting is not being performed. Lowering the engine speed to idle the engine will help extend the life of the engine, as well as conserve fuel and reduce the noise level of the machine.

## 6. MAINTENANCE

Maintaining your compactor will insure long life to the machine and its components.

### 6.1 Preventive Maintenance

1. Turn off engine. Engine must be cool.
2. Keep the engine's throttle lever in its **SLOW** position, and remove spark plug wire from spark plug and secure.
3. Inspect the general condition of the plate compactor. Check for loose screws, misalignment or binding of moving parts, cracked or broken parts, and any other condition that may affect safe operation.
4. Remove all debris from the plate compactor with a soft brush, vacuum, or compressed air. Then use a premium quality lightweight machine oil to lubricate all moving parts.
5. Clean the bottom of the compactor base as soon as it begins to pick up soil being compacted. The unit can not do a good job if the bottom surface is not smooth and clean.
6. Replace spark plug wire.



#### **IMPORTANT**

- Never use a "pressure washer" to clean your plate compactor. Water can penetrate tight areas of the unit and cause damage to spindles, pulleys, bearings, or the engine. The use of pressure washers will result in shortened life and reduce serviceability.

### 6.2 Checking V-Belt(s)

To ensure optimum power transmission from the engine to the eccentric shaft, the V-belt(s) must be in good condition and operate under proper tension.

1. Turn off engine. Engine must be cool.
2. Remove the belt guard to access the V-belt(s).
3. Check the condition of the V-belt(s). If any V-belt is cracked, frayed, or glazed, it should be replaced as soon as convenient.
4. Check the V-belt tension by squeezing them in the centre. The normal deflection on each side should be 9 mm (3/8") to 13 mm (1/2") with moderate pressure from your thumb or finger.

# 14 Maintenance

## 6. MAINTENANCE (CONT'D)

### 6.2 Checking V-Belt(s) (cont'd)

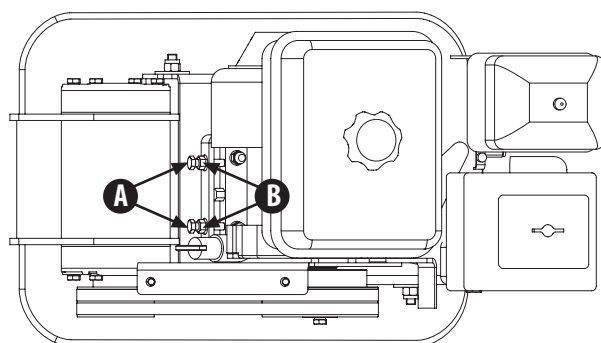
#### ➔ IMPORTANT

- On new machines or after installing a new belt, check belt tension after first 20 hours of operation. Check and adjust belt every 50 hours thereafter.

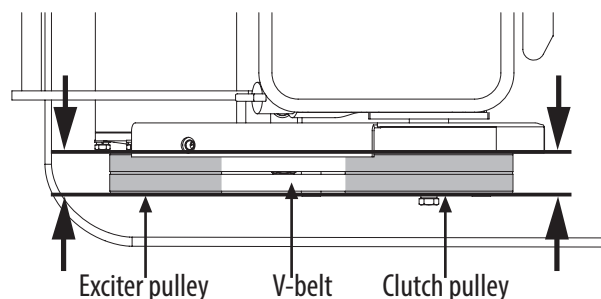
### 6.3 Tensioning V-Belt(s)

Proper belt tension is critical to good performance. Proper adjustment will ensure long belt life. Too much or too little belt tension will cause premature belt failure.

1. Loosen 4 engine mount bolts (do not remove) enough to move the engine forward.



2. Loosen the jam nuts **B**, leaving space between the nut and bracket.
3. Push engine towards the back of the plate by turning the adjustment bolts **A** to remove any slack in V-belt(s).



#### ➔ IMPORTANT

- When adjusting the belt(s), make sure that the clutch pulley is aligned with the exciter pulley.

4. When the V-belt tension is correct, tighten the jam nuts **B** against the bracket.

5. Tighten the engine mount bolts.

6. Replace the belt guard.

#### ➔ IMPORTANT

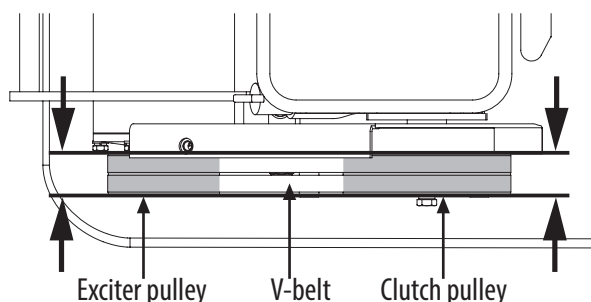
- If the adjustment bolts have no more adjustment left, the belt(s) may have to be replaced.

### 6.4 Replacing V-Belt(s)

#### ➔ IMPORTANT

- Both V-belts should be replaced at the same time because they will wear evenly through normal use. Work on one belt at a time.

1. Loosen 4 engine mount bolts (do not remove) to move the engine forward.
2. Loosen the jam nuts **B** and bolts **A** shown in above figure.
3. Slide the engine towards the front of plate and slip the old V-belt(s) off of the wheel pulley and install the new V-belt(s) in their place.
4. Position the V-belt(s) over the engine pulley.
5. Move the engine back.



#### ➔ IMPORTANT

- When adjusting the belt(s), make sure that the clutch pulley is aligned with the exciter pulley.

## 6. MAINTENANCE (CONT'D)

### 6.4 Replacing V-Belt(s) (cont'd)

6. When the V-belt tension is correct, tighten the jam nuts **B** and the engine mount bolts.
7. Replace the belt guard.

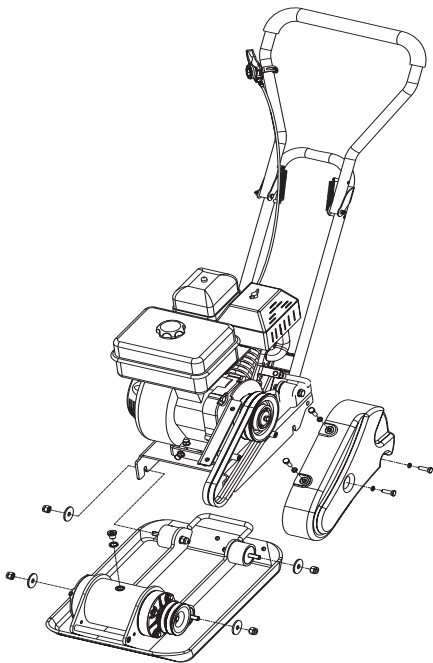
#### WARNING

- When removing or installing the drive belt(s), be careful not to get your fingers caught between the belt and pulley.

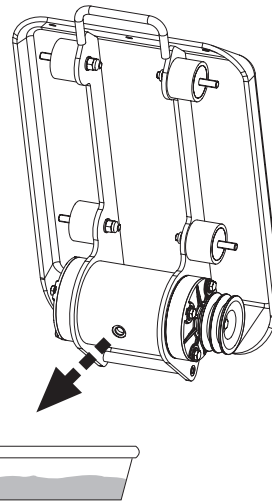
### 6.5 Exciter Lubrication

The exciter housing is pre-serviced using Automatic Transmission Fluid Dextron III, Mercon, EXXON (ESSO) NUTO H-32 or its equivalent. Change fluid after 200 hours of operation.

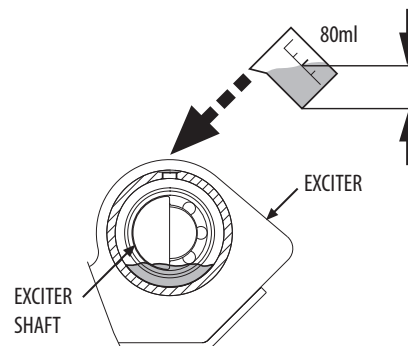
1. Let exciter cool before changing exciter oil.



2. Remove the belt guard and V-belt(s).
3. Remove the bolts that hold the deck to the housing.
4. Lift entire deck with engine from housing.



5. Remove pipe plug from top of exciter housing. Tilt housing upside down so oil drains from exciter. Examine oil for metal chips as an indicator of future problems.
6. Return plate housing to the upright position.



7. Fill the exciter housing with exciter oil.

#### CAUTION

- Do not overfill – overfilling can result in excessive temperatures in the exciter.

8. Apply pipe sealant to pipe plug and reinstall into top of exciter housing.
9. Reinstall deck, V-belt(s) and belt guard.

### 6.6 Engine Maintenance

Refer to the **Engine Manual** included in your plate compactor for information on engine maintenance. Your engine manual provides detailed information for performing the tasks.

# 16 Storage / Lifting / Transporting

## 7. STORAGE

If the plate compactor will not be used for a period longer than 30 days, follow the steps below to prepare your unit for storage.

1. Drain the fuel tank completely. Stored fuel containing ethanol or MTBE can start to go stale in 30 days. Stale fuel has high gum content and can clog the carburetor and restrict fuel flow.
2. Start the engine and allow it to run until it stops. This ensures no fuel is left in the carburetor. Run the engine until it stops. This helps prevent deposits from forming inside the carburetor and possible engine damage.
3. While the engine is still warm, drain the oil from the engine. Refill with fresh oil of the grade recommended in the Engine Manual.
4. Allow the engine to cool. Remove the spark plug and put 60 ml of SAE-30 high quality motor oil into the cylinder. Pull the starter rope slowly to distribute the oil. Replace the spark plug.

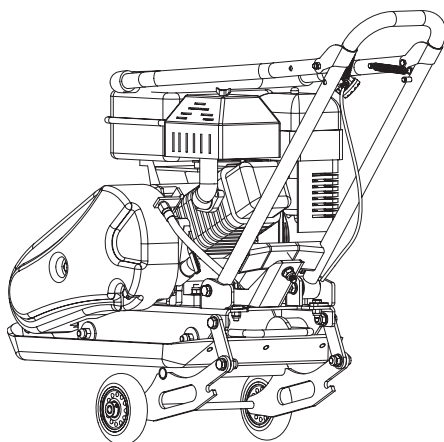
### CAUTION

- Remove the spark plug and drain all of the oil from the cylinder before attempting to start the unit after storage.

5. Use clean cloths to clean off the outside of the compactor and to keep the air vents free of obstructions.

### IMPORTANT

- Do not use strong detergents or petroleum based cleaners when cleaning plastic parts. Chemicals can damage plastics.



6. Carefully fold the upper handle down. Do not allow control cables to become pinched or bent.

7. Store your plate compactor in an upright position in a clean, dry building that has good ventilation.

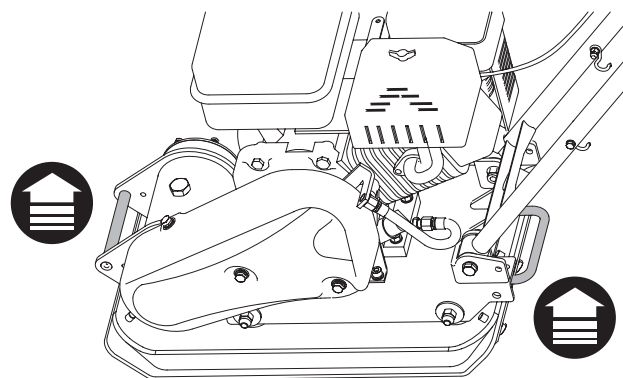
### WARNING

- Do not store compactor with fuel in a non-ventilated area where fuel fumes may reach flame, sparks, pilot lights or any ignition sources.
- Use only approved fuel containers.

## 8. LIFTING / TRANSPORTING

See technical data for the weight of the machine.

To avoid burns or fire hazards, let engine cool before lifting / transporting machine or storing indoors.



The unit can be lifted by the handles in front and back of the unit as shown.

The unit must be transported in the upright position to prevent fuel from spilling. Do not lay machine on its side or top.

Secure or tie down unit using the lifting handle to prevent machine from sliding or tipping over.

### DANGER

- Machine may fall and cause damage or injury if lifted incorrectly. Lift using handles at base of plate.



## 9. TECHNICAL SPECIFICATIONS

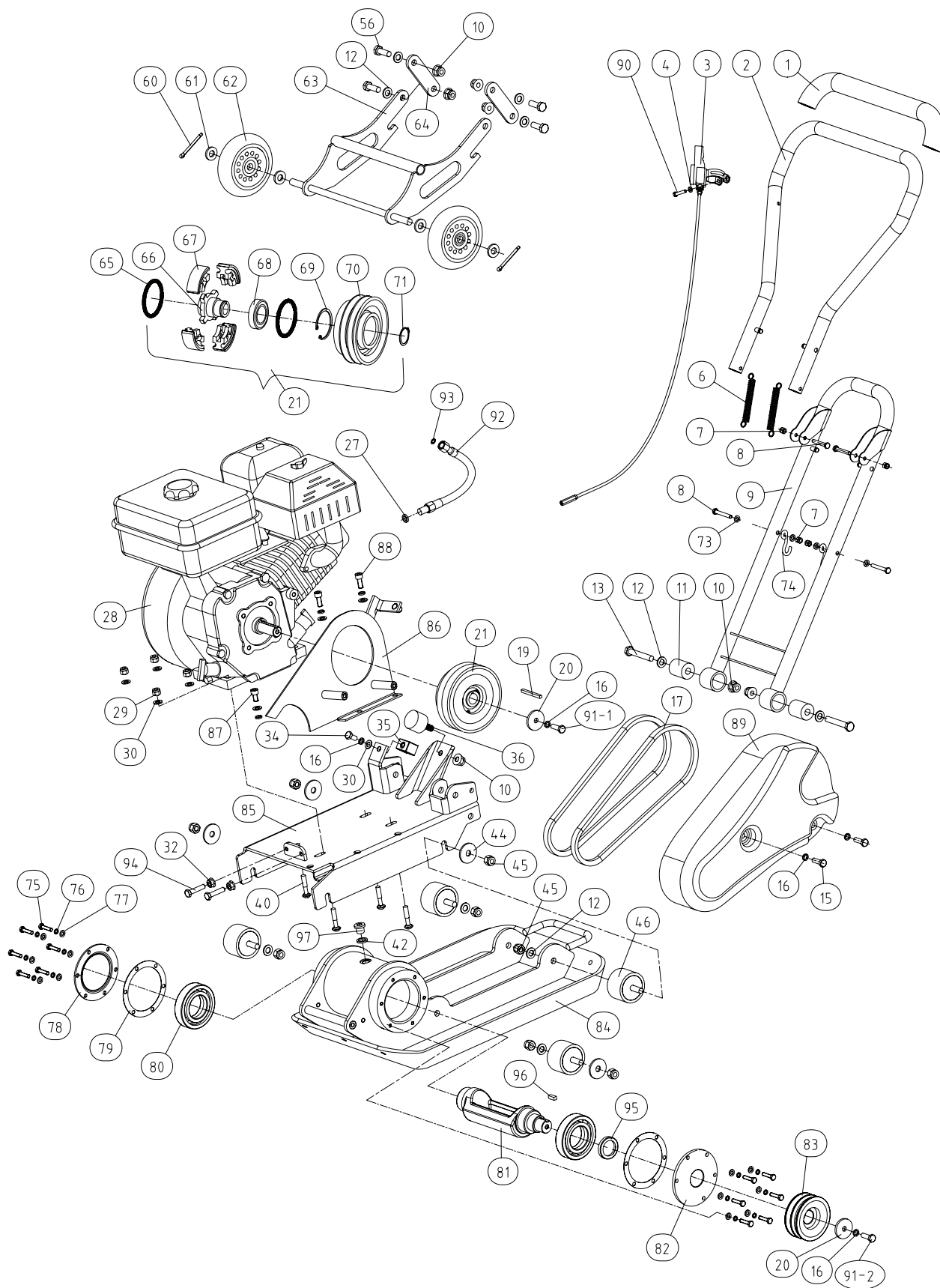
<b>Product Number:</b>	060-3798-0
<b>Plate Size:</b>	530 x 370 mm
<b>Centrifugal Force:</b>	11,000 N
<b>Exciter Speed:</b>	5500 vpm
<b>Compaction Depth:</b>	25 cm
<b>Travel Speed:</b>	25 m/min
<b>Engine:</b>	196 cc
<b>Weight:</b>	57 kg

## 10. TROUBLESHOOTING

Problem	Cause	Remedy
Engine fails to start.	<ol style="list-style-type: none"> <li>1. Spark plug wire disconnected.</li> <li>2. Out of fuel or stale fuel.</li> <li>3. Throttle control lever not in correct starting position.</li> <li>4. Switch not in ON Position.</li> <li>5. Blocked fuel line.</li> <li>6. Fouled spark plug.</li> <li>7. Engine flooding.</li> </ol>	<ol style="list-style-type: none"> <li>1. Attach spark plug wire securely to spark plug.</li> <li>2. Fill with clean, fresh gasoline.</li> <li>3. Move throttle control lever to start position.</li> <li>4. Throttle must be positioned at choke for a cold start.</li> <li>5. Clean the fuel line.</li> <li>6. Clean, adjust gap, or replace.</li> <li>7. Wait a few minutes to restart, but do not prime.</li> </ol>
Engine runs erratically.	<ol style="list-style-type: none"> <li>1. Spark plug wire loose.</li> <li>2. Unit running on CHOKE.</li> <li>3. Blocked fuel line or stale fuel.</li> <li>4. Vent plugged.</li> <li>5. Water or dirt in fuel system.</li> <li>6. Dirty air cleaner.</li> </ol>	<ol style="list-style-type: none"> <li>1. Connect and tighten spark plug wire.</li> <li>2. Move choke lever to OFF.</li> <li>3. Clean fuel line. Fill tank with clean, fresh gasoline.</li> <li>4. Clear vent.</li> <li>5. Drain fuel tank. Refill with fresh fuel.</li> <li>6. Clean or replace air cleaner.</li> </ol>
Engine overheats.	<ol style="list-style-type: none"> <li>1. Engine oil level low.</li> <li>2. Dirty air cleaner.</li> <li>3. Air flow restricted.</li> </ol>	<ol style="list-style-type: none"> <li>1. Fill crankcase with proper oil.</li> <li>2. Clean air cleaner.</li> <li>3. Remove blower housing and clean.</li> </ol>
Engine will not stop when throttle control is positioned at stop, or engine speed does not increase properly when throttle control is adjusted.	Debris interfering with throttle linkage.	Clean dirt and debris.
Compactor is difficult to control when pounding (machine jumps or lurches forward)	Too high engine speed on hard ground.	Set the throttle lever to lower speed.

## 18 Parts Schematic

## 11. PARTS SCHEMATIC



## 12. PARTS REFERENCE LIST

Item #	Part Name	Qty.
1	Grip	1
2	Upper Handle	1
3	Throttle Control	1
4	Flat Washer 5	1
6	Spring	2
7	Lock Nut M6	4
8	Bolt M6X40	4
9	Lower Handle	1
10	Lock Nut M10	7
11	Rubber Sleeve	2
12	Flat Washer 10	10
13	Bolt M10X65	2
15	Bolt M8X20	2
16	Lock Washer 8	13
17	V-Belt	2
19	Key B5X35	1
20	Washer	2
21	Centrifugal Clutch	1
27	Washer	1
28	Engine	1
29	Lock Nut M8	4
30	Washer 8	13
32	Nut M8	2
34	Bolt M8X16	1
35	Shock Absorber	1
36	Shock Absorber	1
40	Bolt M8X40	4
42	Washer 14	1
44	Washer	4
45	Lock Nut M10	8
46	Shock Absorber	4
56	Bolt M10X30	4
60	Pin 2.5x25	2
61	Flat Washer 12	4
62	Wheel	2
63	Wheel Bracket	1
64	Link Plate	2
65	Spring	2
66	Hub	1

Item #	Part Name	Qty.
67	Clutch Lining	4
68	Bearing 6006	1
69	Snap Ring 55	1
70	Clutch Pulley	1
71	Snap Ring 30	1
73	Flat Washer 6	12
74	Wheel Kid Pothook	2
75	Bolt M6x20	12
76	Spring Washer 6	12
77	Flat Washer 6	12
78	Bearing Cover Right	1
79	Washer	2
80	Bearing 6209	2
81	Exciter Shaft	1
82	Bearing Cover Left	1
83	Pulley	1
84	Base Plate	1
85	Engine Deck	1
86	Bracket	1
87	Screw M8X14	1
88	Screw M8X20	2
89	Belt Guard	1
90	Bolt M5X25	1
91-1	Bolt M8X25	1
91-2	Bolt M8X20	1
92	Hose	1
93	O-ring	1
94	Bolt M8X45	2
95	Seal 30X42X6	1
96	Key B6X18	1
97	Plug M14X1.5	1



### IMPORTANT

- The part numbers in this list do not correspond to the ones in the assembly steps. For those, please consult **section 2. Parts List** on page 7.

## 13. WARRANTY

This product has a limited 30-day over-the-counter replacement warranty, a 2-year repair warranty on main unit against defects in manufacturing workmanship and materials, and a 90-day warranty on included accessories. All warranty claims must be accompanied by proof of purchase.

Subject to the conditions and limitations described below, this product, if returned to us with proof of purchase within the stated warranty period and if covered under this warranty, will be repaired or replaced (with the same model, or one of equal value or specification) at our option. We will bear the cost of any repair or replacement and any costs of labour relating thereto.

These warranties are subject to the following conditions and limitations:

- a) a bill of sale verifying the purchase and purchase date must be provided;
- b) this warranty will not apply to any product or part thereof which is worn or broken or which has become inoperative due to abuse, misuse, accidental damage, neglect or lack of proper installation, operation or maintenance (as outlined in the applicable owner's manual or operating instructions) or which is being used for industrial, professional, commercial or rental purposes;
- c) this warranty will not apply to normal wear and tear or to expendable parts or accessories that may be supplied with the product that are expected to become inoperative or unusable after a reasonable period of use;
- d) this warranty will not apply to routine maintenance and consumable items such as, but not limited to, fuel, lubricants, vacuum bags, blades, belts, sandpaper, bits, fluids, tune-ups, or adjustments;
- e) this warranty will not apply where damage is caused by repairs made or attempted by others (i.e. persons not authorized by the manufacturer);
- f) this warranty will not apply to any product that was sold to the original purchaser as a reconditioned or refurbished product (unless otherwise specified in writing);
- g) this warranty will not apply to any product or part thereof if any part from another manufacturer is installed therein or any repairs or alterations have been made or attempted by unauthorized persons;
- h) this warranty will not apply to normal deterioration of the exterior finish, such as, but not limited to, scratches, dents, paint chips, or to any corrosion or discolouring by heat, abrasive and chemical cleaners;
- i) this warranty will not apply to component parts sold by and identified as the product of another company, which shall be covered under the product manufacturer's warranty, if any.

### **Additional limitations**

This warranty applies only to the original purchaser and may not be transferred. Neither the retailer nor the manufacturer shall be liable for any other expense, loss, or damage, including, without limitation, any indirect, incidental, consequential, or exemplary damages arising in connection with the sale, use, or inability to use this product.

### **Notice to consumer**

This warranty gives you specific legal rights, and you may have other rights, which may vary from province to province. The provisions contained in this warranty are not intended to limit, modify, take away from, disclaim, or exclude any statutory warranties set forth in any applicable provincial or federal legislation.

**Imported by Trileaf Distribution Trifeuil, Toronto, Canada M4S 2B8**