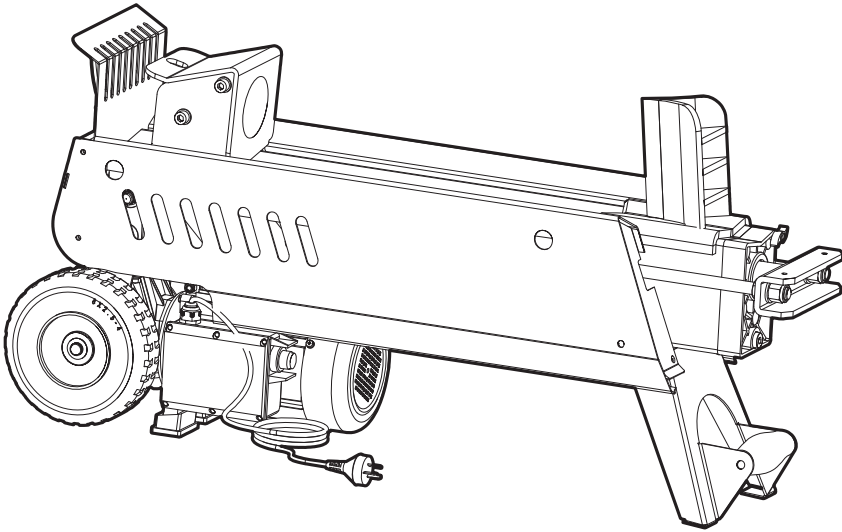


YARDWORKS^{TM/MC}

9-Ton Log Splitter

model number 060-3772-0



Please read and understand this manual before beginning any use or assembly of the product, and make sure all parts are present.





Questions?

If you have any questions or need replacement parts, please call our toll-free helpline at 1-866-523-5218.

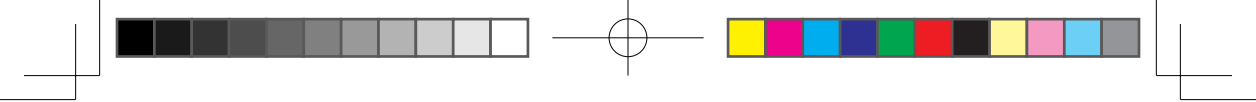
Instruction Manual

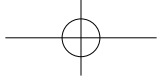
655753.ctb CA01M030_G1.indd 1
tc • TRANSCONTINENTAL • 275 Wellington St. E., Aurora, Ontario L4G 6J9 • 905-841-4400

2017/11/22 21:00:32

FILE NAME:		DOCKET #	PRINTER	CLIENT #	PRINT PROCESS		
YW_060_3772_0_9TElectricLogSplitter		978343	CTC Generic	AD8343	LITHO		
<div><div> PANTONE 388</div><div> PANTONE 3145</div><div> PROCESS BLACK</div><div> PANTONE COOL GRAY 11</div></div>							
WO	w01a	w01b	w02a	w02b	w03a	w07a	
Date	12/01/16	12/05/16	12/16/16	12/20/16	12/29/16	02/08/17	
Artist	PA	PA	PA	PA	Cindy	Alexa	

PLEASE CHECK ARTWORK CAREFULLY: This artwork is presented on the condition that it will be carefully inspected before going any further in the production cycle. TC • Transcontinental's responsibility is limited to making corrections and/or replacing defective files.





YARDWORKS^{TM/MC}



For problems or questions, **DO NOT RETURN TO STORE.** Please contact one of our Customer Service Agents who would be happy to assist you.

En cas de problèmes ou si vous avez des questions, **NE RETOURNEZ PAS L'ARTICLE AU MAGASIN.** Contactez plutôt un de nos agents du service à la clientèle, qui se fera un plaisir de vous aider.



For Customer Assistance Please Call:
Pour le service à la clientèle, veuillez composer:

CANADA: 1-866-523-5218

Specifications	5
Important Safety Instructions	6
Symbols	8
Parts List	9
Exploded View	12
Parts Location	13
Important Information	14
Before Assembly	15
Assembly	17
Operation	18
Maintenance	23
Storage	25
Troubleshooting	26
Environmental Protection	27
Warranty	27



model no. 060-3772-0 | contact us 1.866.523.5218

Specifications

Product Name	9-Ton Log Splitter
Model Number	060-3772-0
Motor	120 V 60 Hz 15 A 1 3/4 HP
Log Capacity (Diameter)	12 1/2" (32 cm)
Log Capacity (Length)	20 1/2" (52 cm)
Splitting Force	9 Tons
Hydraulic Force	20.5 MPa
Hydraulic Oil Capacity	6.3 L

DIMENSIONS

Length	42" (106.6 cm)
Width	11 5/32" (29 cm)
Height	20 3/16" (51.3 cm)
Product Weight	172 lb (78 kg)



NOTE: The log capacity in diameter is only a guideline. A small log can be difficult to split if it has knots or very tough fibre.

IMPORTANT! READ AND UNDERSTAND ALL INSTRUCTIONS.

Failure to follow safety instructions may result in electric shock, fire, and/or serious personal injury.

- Read and understand all instructions and all labels affixed to the log splitter. Learn the applications, limitations, and specific potential hazards before using this log splitter.

PERSONAL SAFETY

- Do not operate the log splitter while under the influence of drugs, alcohol, or any medication.
- Stay alert, watch what you are doing, and use common sense. Do not operate the log splitter when you are tired.
- Dress properly. Do not wear loose clothing, neckties, or jewellery that can get caught and draw you into moving parts. Rubber gloves and non-skid, steel-toed footwear should be worn when working with the log splitter. Wear protective hair covering to contain long hair and prevent it from getting caught in the log splitter.
- Always wear safety goggles. The use of a log splitter can result in foreign objects being thrown into your eyes which can result in severe or permanent eye damage. Everyday eyeglasses only have impact-resistant lenses; they are not safety glasses.
- Never stand on the log splitter. Never allow anyone to ride on the machine. Do not transport anything or anyone on the log splitter. Serious injury could occur if the machine is tipped or jarred.
- Do not remove jammed logs using your hand.
- Keep hands away from moving parts. Do not place your hands in splits and cracks that open in the log. They may close suddenly which could cause severe crushing or amputation.
- Keep your hands away from the controls while logs are being loaded and unloaded. Ensure that the loader and the operator are positioned in the safe area at the control end of the log splitter while the log pusher is moving.

ELECTRICAL SAFETY

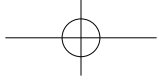
- Always unplug the log splitter from the

power supply when it is not in use, and before making adjustments, changing parts, cleaning, or servicing the log splitter.

- If an extension cord is needed, make sure to use a proper extension cord. The cord should be no longer than 32.5' (10 m) with a cross-section of no less than 1/8" (2.5 mm) and a wire size (A.W.G.) of 12 in order to allow sufficient flow of electric current to the motor. An undersized cord may result in loss of power and overheating.
- Electrical connections must be made with protected material suitable for outdoor use. Avoid using loose and inadequately insulated connections.
- Only use an electrical circuit having adequate protection and capacity corresponding to the power, voltage, and frequency of the log splitter. Ensure that there is a ground connection and a regulation differential switch upstream.
- Ground the log splitter. This log splitter is equipped with an electric cord having an equipment-grounding conductor and a grounding pin. Insert the plug to a matching electrical outlet. Do not modify the plug or remove the grounding pin.
- Do not touch the metal prongs of the electric cord plug when inserting or removing the plug from an electrical outlet. Prevent body contact with grounded surfaces such as pipes, radiators, rangers, and refrigerators.
- Never open the pushbutton box. Contact a qualified electrician if it is necessary to open this box.

WORK AREA SAFETY

- Place the log splitter on a flat, stable, and level surface that is 24–30" (60–75 cm) high. Operate the log splitter in a location where there is plenty of room for handling.
- To prevent unintended movement during operation, anchor the log splitter to the work area if it tends to slip, move, or slide.
- Keep the work area clean. A cluttered workplace invites accidents. Do not leave tools or pieces of wood on the log splitter during operation.
- Before beginning any work using the log splitter, make sure the work area has sufficient lighting and that no obstructions will interfere with the safety of operation.
- Do not operate the log splitter in dangerous



environments. Do not use the log splitter in wet or damp conditions, and do not expose it to rain. In order to avoid potential fire hazards, never use the log splitter in an explosive atmosphere where there are fumes from paint, solvents, and other flammable liquids.

- Keep children and visitors away. Never allow children or untrained adults to operate the log splitter.
- Make the workshop childproof. Disconnect the power cord. Store the log splitter away from children and other individuals not qualified to use it. Keep the workshop locked.














SAFE OPERATION

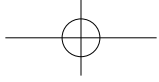
- Always check the oil level before using the log splitter.
- Keep all guards in place and in working order.
- Always inspect the log splitter before turning it on. Make it a habit to check the log splitter for oil leaks around the ram cylinder. Do not operate the log splitter if oil is leaking. Refer to the Troubleshooting section in this manual.
- Check for damaged parts. Inspect the log splitter, including the splitting wedge and guards, for any malfunctioning or damaged components, cracks, and deformation. Replace damaged, missing, or faulty parts before using the log splitter.
- Check for alignment of moving parts, binding of moving parts, mounting and any other conditions that may affect the operation of the log splitter.
- Do not place the log splitter on the ground during operation. Doing so creates an awkward operating position in which the operator's face is close to the machine thus increasing the risk of being struck by wood chips or debris.
- The log splitter must always be operated by only one person. If another person is helping to load logs to be split, do not start the machine until that person is clear of the operating zone. Never ask another person for help in freeing a jammed log.

- Inspect the log before loading it on the log splitter. Ensure there are no nails or foreign objects in the logs to be split. The logs should be cut as squarely as possible. Branches must be cut off flush with the trunk.
- Always pay attention to the movement of the log pusher. Do not load a log until the log pusher has stopped. Do not attempt to remove split logs until the machine has totally completed its work cycle and has stopped.
- Never attempt to split more than one log at a time.
- Do not force the log splitter. It will do the job better and safer at the feed rate for which it was designed.
- Do not attempt to split logs that are larger than the log capacity indicated in the Specifications section. Doing so is dangerous and may damage the machine.
- Only use the log splitter for its intended purpose. Do not force the machine to do a job for which it was not designed.
- Never leave the log splitter unattended while it is running. Turn the power off. Do not leave the machine until it comes to a complete stop.
- Consult the instruction manual before servicing. Product repairs and service must be performed only by qualified repair personnel.
- Maintain the log splitter with care. Keep the log splitter clean and the blade sharp for better and safer performance. Follow instructions for lubricating and changing accessories.
- Do not dump used oil into drains, soil, or water. Dispose of used oil only at an authorized collection point, or follow the regulations that are in effect in your area.
- Only use the parts and accessories supplied with this product or specifically designated for use with this product by the manufacturer. Using other parts and accessories not designated by the manufacturer could result in personal injury or property damage.

SAVE THESE INSTRUCTIONS.

Symbols

Symbol	Name	Designation/Explanation	Symbol	Name	Designation/Explanation
	Read the instruction manual.	User must read and understand the instruction manual and all labels affixed to the product before using this product.		Avoid injury from unexpected accidents.	Always pay attention to the movement of the log pusher. Keep hands and body out of the way of all moving parts.
	Inspect the log splitter.	Inspect the log splitter for any malfunctioning or damaged components.		Protect your hands.	Keep your hands away from splits and cracks that open in the log. Do not remove jammed logs using your hands. Keep hands off the controls while logs are being loaded and unloaded.
	Dress properly.	Do not wear loose clothing, gloves, neckties, or jewellery (rings, wrist watches), because they can get caught in moving parts. Wear non-conductive protective gloves and non-skid, steel-toed footwear. Wear protective hair covering to contain long hair.		Disconnect the power.	Unplug the log splitter when it is not in use and before making adjustments, changing parts, cleaning, or servicing.
				Protect the environment.	Dispose of used oil only at an authorized collection point, or follow the regulations that are in effect in the area where the log splitter is used.
	Protect your eyes and face.	Always wear safety goggles. Everyday eyeglasses only have impact-resistant lenses. They are not safety glasses.		Warning	Indicates a potentially hazardous situation, which, if not avoided could result in death or serious injury.
	Keep visitors and children away.	Always keep other people a safe distance away from the work area, especially when the log splitter is in use. The log splitter must always be operated by only one person.		Caution	Indicates a potentially hazardous situation, which, if not avoided, may result in minor or moderate injury.
				Note	Notes and reminders for the operator.



Item	Description	Qty
1	Nut	4
2	Snap washer	1
3	Washer	8
4	Valve rod	1
5	O-ring	1
6	Safety valve spring basis	1
7	O-ring	4
8	Safety valve spring	1
9	Safety valve core	1
10	Cylinder cover-left	1
11	Valve sleeve	1
12	O-ring	2
13	Safety valve core adjusting spring	1
14	Adjusting spring basis	1
15	Stud	4
16	Cylinder	1
17	Piston	1
18	Piston ring	1
19	O-ring	1
20	Restoring spring	1
21	Circlip	1
22	Snap washer	1
23	O-ring	1
24	O-ring	2
25	O-ring	1
26	Bleed screw	1
27	Wear-resisting belt	1
28	O-ring	1
29	Piston seal	1
30	Piston rod weldment	1
31	Washer	2
32	Nut	2
33	Copper washer	4
34	Valve sleeve	1
35	O-ring	4

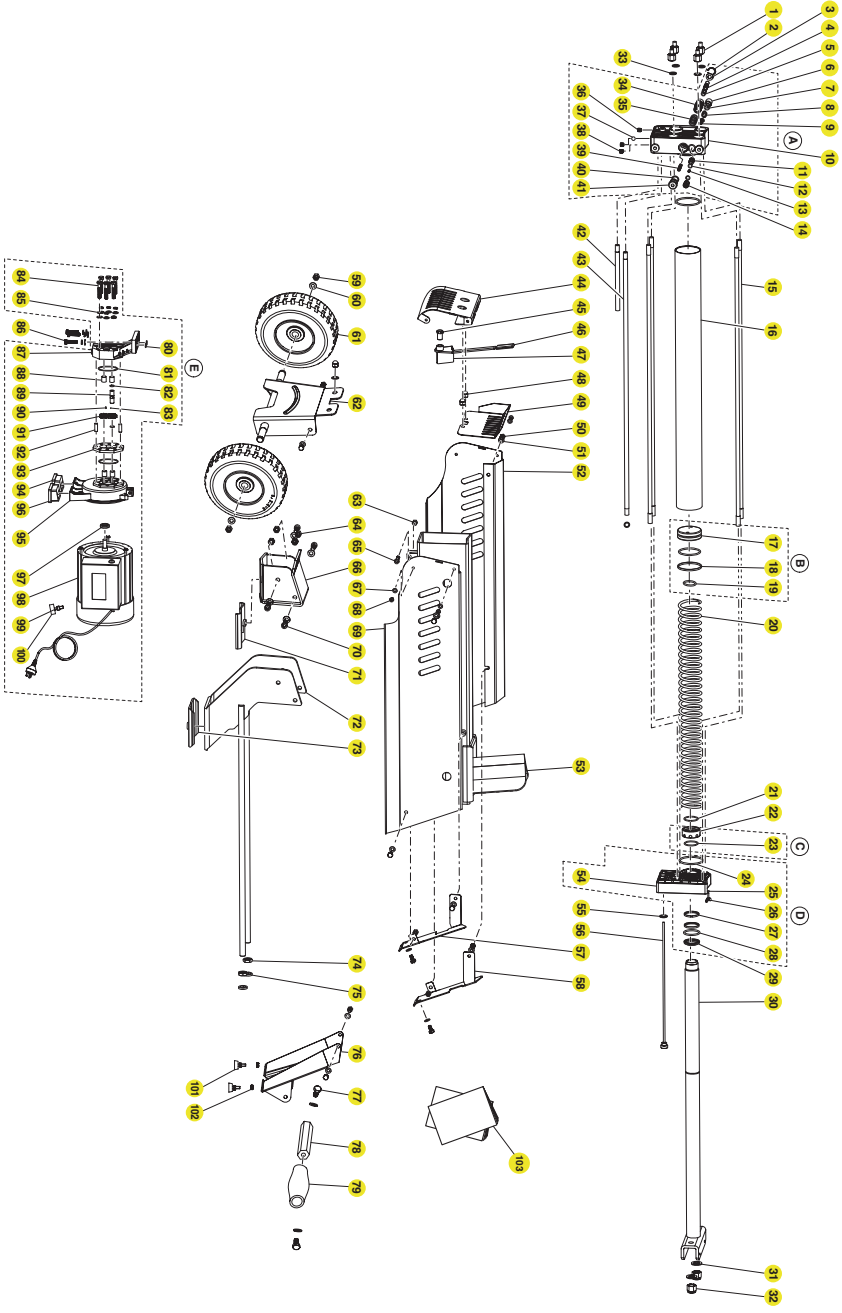
Item	Description	Qty
36	Screw	2
37	Steel ball	1
38	Valve	1
39	Valve rod restoring spring	1
40	O-ring	1
41	Valve base	1
42	Intake hose	1
43	Connection hose	1
44	Cylinder cover guard	1
45	Lever nut	1
46	Lever head	1
47	Lever	1
48	Carriage nut	3
49	Separating plate	1
50	Bolt	12
51	Washer	21
52	Body cover-right	1
53	Tube frame	1
54	Cylinder cover - right	1
55	Dipstick washer	1
56	Dipstick	1
57	Guard cover-right	1
58	Guard cover-left	1
59	Nut	2
60	Washer	2
61	Wheel	2
62	Wheel shaft frame	1
63	Nut	5
64	Nut	4
65	Hex bolt	1
66	Log pusher	1
67	Washer	4
68	Cross-headed screw	4
69	Body cover-left	1
70	Hex bolt	4

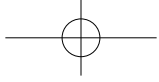
model no. 060-3772-0 | contact us 1.866.523.5218

Parts List

Item	Description	Qty
71	Plastic insert-upper	1
72	Drawing weldment	1
73	Plastic insert-lower	1
74	Thin nut	2
75	Spring washer	2
76	Support leg	1
77	Bolt	2
78	Handle	1
79	Sleeve	1
80	O-ring	2
81	O-ring	2
82	Gear shaft snap washer	2
83	Steel ball	1
84	Bolt	6
85	Spring washer	9
86	Bolt	3
87	Pump cover	1
88	Sleeve bearing	4
89	Gear shaft	1
90	Pin	1
91	Gear	2
92	Pin	2
93	Gear housing plate	1
94	Motor support shoe-right	1
95	Motor cover	1
96	Motor support shoe-left	1
97	Seal	1
98	Motor assembly	1
99	Nut	1
100	Screw	1
101	Bolt with rubber feet	2
102	Nut	4
103	Instruction manual	1

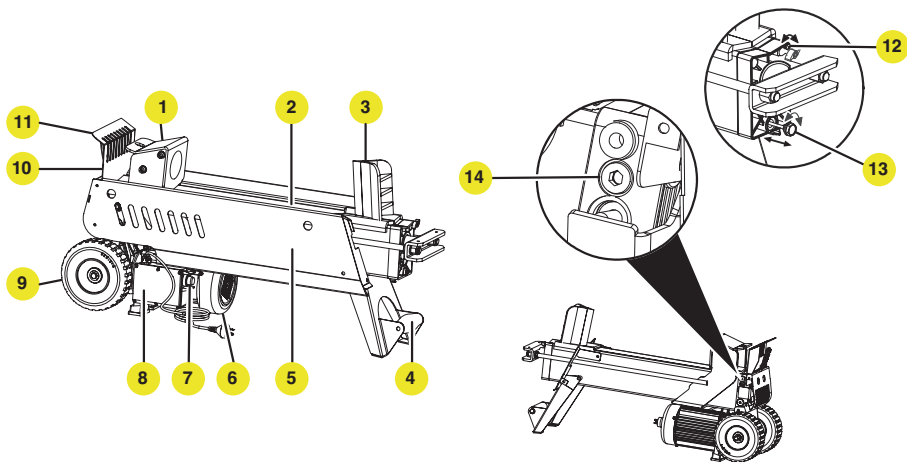
Exploded View





model no. 060-3772-0 | contact us 1.866.523.5218

Item	Description
1	Log pusher
2	Work table
3	Wedge
4	Support leg
5	Log retaining plates
6	Motor
7	Pushbutton switch
8	Pushbutton box
9	Wheels (for minor moving only)
10	Hydraulic control lever
11	Control lever guard
12	Bleed screw
13	Oil drain bolt with dipstick
14	Maximum pressure limiting screw





NOTE: The safe use of this product requires an understanding of the information on the product and this operator's manual as well as knowledge of the project you are attempting. Before use of this product, familiarize yourself with all operating features and safety rules.

1. INTENDED USE

This log splitter is intended for household use only. Do not use this log splitter for industrial or other commercial application. Do not use the log splitter for processing any material other than wood.

2. OPERATING FEATURES

2.1 BLEED SCREW

The bleed screw allows air to flow in and out of the oil tank.



WARNING! Failure to loosen the bleed screw may cause the seals in the hydraulic system to rupture and cause serious physical injuries and/or permanent damage to the log splitter. Make sure to loosen the bleed screw prior to operating the log splitter.

2.2 MAXIMUM PRESSURE LIMITING SCREW

The maximum pressure was set at 9 tons in the factory. The limiting screw is sealed with glue to ensure this setting will not change and the log splitter does not operate in splitting pressures less than or exceeding 9 tons. The pressure was set by a qualified mechanic using professional instruments.



WARNING! Do not adjust the maximum pressure limiting screw. Unauthorized resetting may cause the hydraulic pump to weaken its splitting pressure or it may result in serious personal injury and/or damage to the log splitter.

2.3 2-STAGE HYDRAULIC CONTROL

The hydraulic control lever has 2 stages or settings with different speed. Setting I operates at a faster speed to move forward. Setting II operates at lower speed for splitting wood at a maximum splitting force.

3. SAFETY FEATURES

3.1 ZHB CONTROL SYSTEM

This log splitter is equipped with a ZHB control system which means that the operator must use both hands. The left hand controls the hydraulic lever, while the right hand controls the pushbutton switch. If one hand lets go of either the switch or the lever, the log splitter stops immediately.

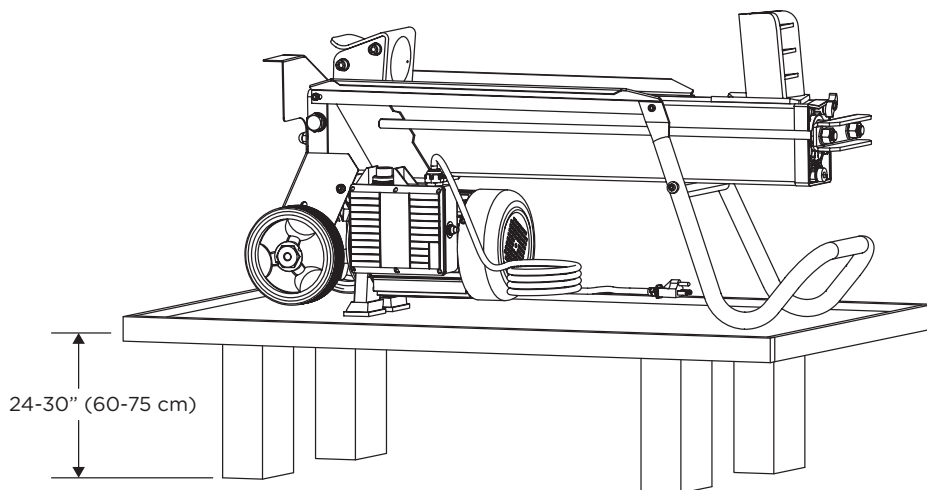
UNPACKING INSTRUCTIONS

This log splitter is shipped completely assembled with the exception of installing the wheels and the rubber feet.

- Carefully remove the log splitter and its accessories from the box.
- Check and make sure all parts and accessories are included before using the log splitter for the first time. Refer to the Parts Location section.
- Inspect the log splitter and its accessories for any damage.
- If there is any damage or missing parts and/or accessories, contact the customer service helpline at 1-866-523-5218 before using the log splitter.

CHOOSING A LOCATION

- Choose a location where there is plenty of room for handling. Carefully lift the log splitter from both ends and place the log splitter on a stable, flat, and level work surface that is 24–30" (60–75 cm) high.

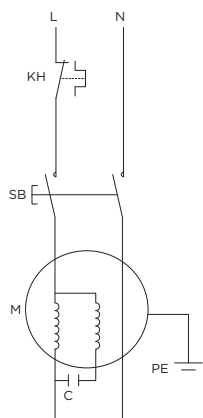


NOTE: This log splitter is designed to operate in ambient temperatures between -20° and 40° C (-4° and 104° F). It can be stored or transported in ambient temperatures between -25° and 55° C (-13° and 131° F).

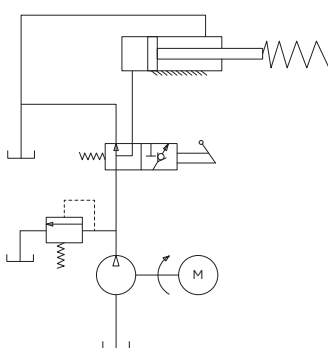
ELECTRICAL REQUIREMENTS

- Use a standard 120 V ($\pm 10\%$) 60 Hz (± 1 Hz) AC only electrical supply that has under-voltage, over-voltage, and over-current protection devices as well as a residual current device (RCD) with a maximum residual current rated at 0.03 A for the log splitter.

WIRING DIAGRAM

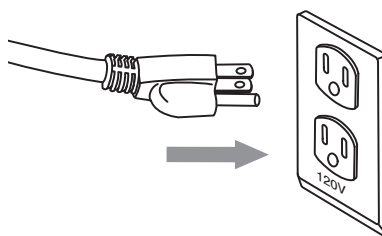


PLUMBING DIAGRAM



WARNING! To reduce the risk of electric shock, this equipment has a grounding type plug that has a third (grounding) pin. This plug will only fit into a grounding type outlet. If the plug does not fit into the outlet, please contact a qualified electrician to install the proper outlet. Do not modify the plug or remove the grounding pin.

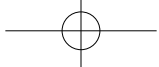
- If an extension cord is needed, use only a 3-wire extension cord that has a 3-prong grounded plug. The cord must be plugged into a matching outlet that has 3 poles in the receptacle. The extension cord must be no longer than 32.5' (10 m), have a cross-section of no less than 1/8" (2.5 mm), and a wire size (A.W.G.) of 12. When working with the log splitter outdoors, use only an extension cord that is clearly marked for outdoor use.



WARNING! Keep the extension cord clear of the working area. Route the cord away from foot traffic so that it will not be tripped over or get caught in lumber, tools, or other obstructions. Failure to do so can result in serious physical injuries.



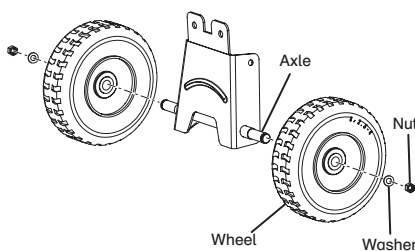
WARNING! Always check all cords before each use. Never use a damaged cord in order to avoid electrical shock resulting in serious injury. Replace damaged cords before operating the log splitter.



CAUTION! To avoid possible electric shock, switch off the power supply at the main fuse or circuit breaker box before assembling, servicing, or cleaning the log splitter.

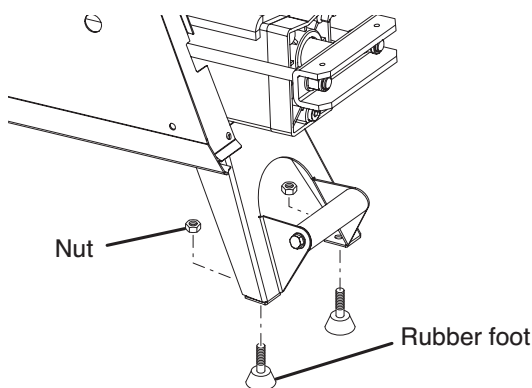
1. ASSEMBLING THE WHEELS

- Remove the wheel nut and washer from the axle.
- Install the wheels with the valve stem facing outward.
- Insert the washer and the wheel nut.
- Tighten the wheel nut.
- Repeat the same procedures for the other wheel.



2. ASSEMBLING THE RUBBER FEET

- Remove the nuts on the rubber feet.
- Insert the rubber foot through the hole underneath the front leg.
- Attach the nut and tighten the rubber foot in place.
- Repeat the same procedures for the other foot.

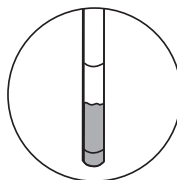


**CAUTION!**

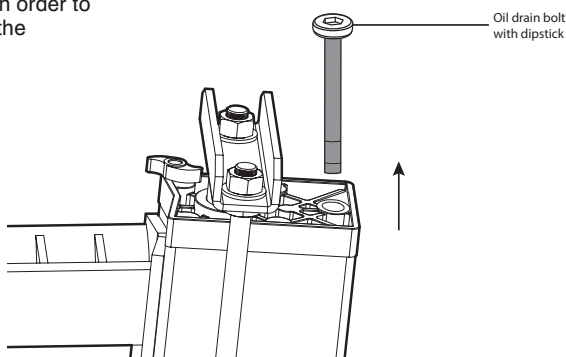
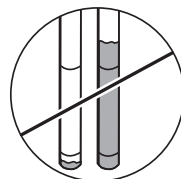
- Before using the log splitter, make sure that the work area is clear of obstructions, clutter, children, and pets. Work only in an area with ample lighting.
- Dress properly. Wear rubber gloves and non-skid, steel-toed footwear.
- When splitting logs, wear safety goggles to protect against eye injury.

1. CHECK THE OIL

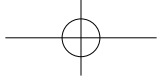
- Ensure the log splitter is disconnected from the power supply.
- Using the support leg handle, stand the log splitter on the end with the wheels.
- Loosen the oil drain bolt and remove from the oil tank to see the attached oil dipstick.
- Wipe the dipstick clean and then re-insert it back into the oil tank. Pull up the dipstick and check if the oil level is between the 2 grooves on the dipstick.
- If there is not enough oil in the tank, refer to “Replacing the Hydraulic Oil” in the Maintenance section.
- After verifying that the oil level is correct, insert the bolt with dipstick back into the oil tank. Tighten the drain bolt in order to avoid leakage, and then place the log splitter back to its normal horizontal position.



Oil level



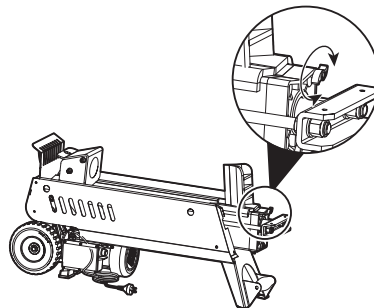
NOTE: Check for oil leaks around the ram cylinder and other points. Refer to the Troubleshooting section if there are oil leaks.



model no. 060-3772-0 | contact us 1.866.523.5218

2. LOOSEN THE BLEED SCREW

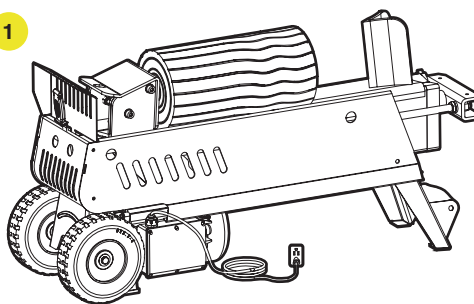
- Turn the bleed screw 3 full turns.
- Leave the bleed screw in a vertical position aligned behind the wedge or in a horizontal position aligned with the work table in order to avoid being sheared off by the split log during operation.



WARNING! Always loosen the bleed screw before operating the log splitter. Failure to loosen the bleed screw may cause the seals in the hydraulic system to rupture and cause serious physical injuries and/or permanent damage to the log splitter.

Operation**3. USING THE LOG SPLITTER**

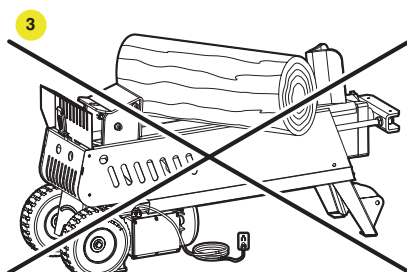
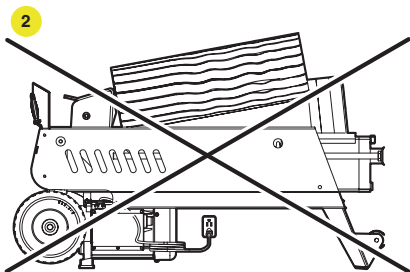
- Plug the power cord of the log splitter into the power supply.
- Load the log into the log splitter by placing the log lengthwise, lying flat on the work table within the log retaining plates, and in the direction of the grain (fig. 1).

1

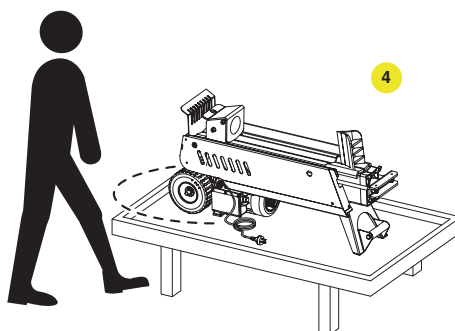
WARNING! After 5 seconds of activation and the wood is not moving, the pressurized oil becomes overheated and could damage the motor. Never keep pressure on the wood by trying to force the log splitter for more than 5 seconds. If the log is extremely hard, rotate the log 90° in order to split it from the other side. If this doesn't work, it means that the hardness of the log exceeds the capacity of the log splitter therefore, the log should be discarded. Do not force the log splitter to split very hard wood.

**WARNING!**

- Do not place the log at an angle against the wedge to split the log on the upper part (fig. 2). Doing so can break the wedge or damage the machine.
- Do not place the log crosswise on the splitter (fig. 3). This is dangerous and may seriously damage the machine.
- Do not split more than one log at a time. One of them may fly out of the splitter and cause injury.
- If the log is small, place it against the log pusher before starting the splitter.
- Do not try to split logs that are larger than the log capacity indicated in the Specifications section.

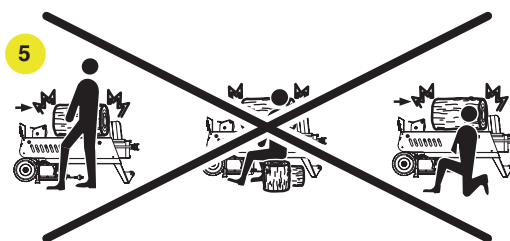


- c. The operator must be positioned at the control end of the log splitter behind the wheels as shown in figure 4.

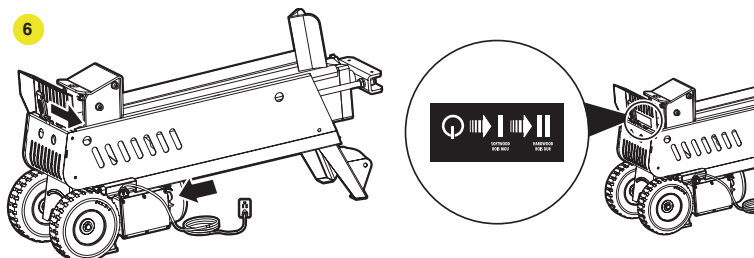




WARNING! Do not crouch on the ground, sit down on a log beside the splitter, or kneel down by the log splitter (fig. 5). Always keep your hands and body out of the splitting or operating zone while using the log splitter.



- d. Using your right hand, push and hold down the pushbutton switch (fig. 6).
- e. While holding down the switch, push the hydraulic control lever to the right (fig. 6). Push the lever halfway (setting I) when splitting softwood. Push the lever all the way to the right (setting II) when splitting hardwood.



NOTE: Both hands are required to start the log splitter. Simultaneously holding the switch with your right hand and pushing the hydraulic control lever to the right with your left hand starts the ram (log pusher) which pushes the log into the wedge. If either hand is removed from either one of the controls, the log splitter will automatically return to the starting position.



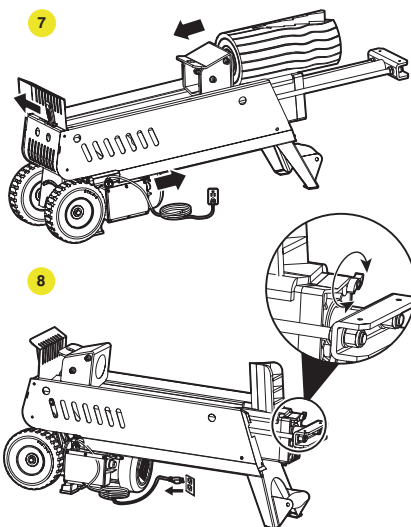
WARNING! After 5 seconds, the pressurized oil becomes overheated and could damage the motor. Never keep pressure on the wood by trying to force the log splitter for more than 5 seconds. If the log is extremely hard, rotate the log 90° and try to split it in a different direction. If this doesn't work, it means that the hardness of the log exceeds the capacity of the log splitter therefore, the log should be discarded. Do not force the log splitter to split very hard wood.

f. Stop the log splitter by simultaneously releasing the hydraulic control lever and the switch (fig. 7). Wait for the log pusher to return to its starting position.

g. Repeat steps b through f for the other logs.

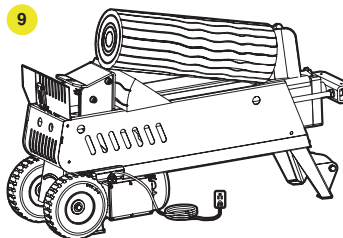
h. When the splitting of all logs is complete or if the machine will be unattended for any period of time, unplug the cord from the power supply (fig. 8).

i. To avoid oil leakage, tighten the bleed screw when moving the log splitter or when the log splitter is no longer in use (fig. 8).

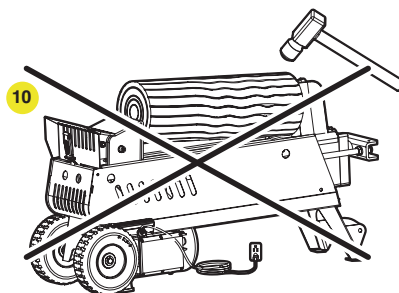


4. FREEING A JAMMED LOG

- Release both the switch and the hydraulic control lever.
- After the log pusher moves back to its starting position and comes to a complete stop, insert a piece of wood or wood wedge that fits on the splitter behind or under the jammed log (fig. 9).
- Simultaneously hold down the switch using your right hand and push the hydraulic control lever to the right using your left hand to start the log splitter. The piece of wood will move forward freeing the jammed log.
- If the log is not freed, repeat this procedure with a steeper sloped piece of wood until the log is free.



WARNING! Do not try to knock the jammed log off the log splitter (fig. 10). Doing so will damage the machine or cause the log to fly out of the splitter which could result in an injury.





WARNING! To avoid possible electric shock, always disconnect log splitter from the power supply and tighten the bleed screw before cleaning, making adjustments, or conducting maintenance work on the log splitter.

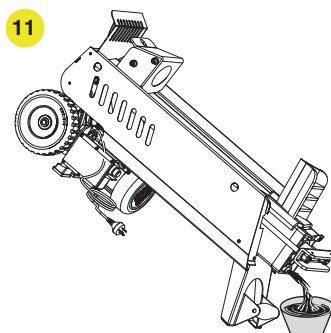
REPLACING THE HYDRAULIC OIL

Replace the hydraulic oil in the log splitter after every 150 hours of use.

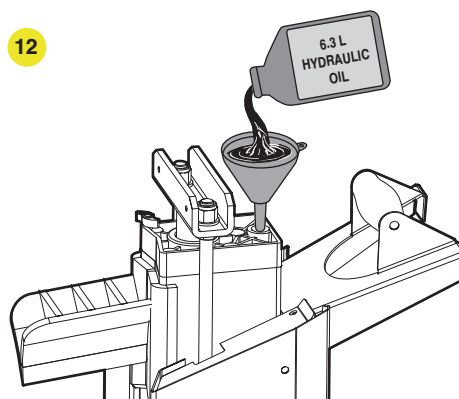
When replacing the hydraulic oil, it is recommended to use one of the following:

- 10W AW32
- ASLE H-150
- ISO 32

- Check and make sure that all moving parts have come to a complete stop.
- Turn off the log splitter and unplug it from the power supply.
- Using the support leg handle, stand the log splitter on the end with the wheels.
- Unscrew the oil drain bolt with dipstick and remove it.
- Tilt the log splitter onto the support leg over a 7-liter container in order to drain the hydraulic oil (fig. 11).

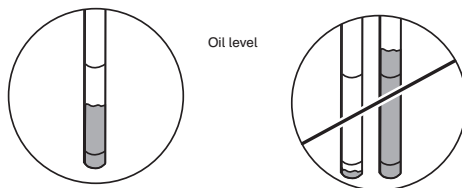


- Using the support leg, tilt the log splitter back onto the motor side.
- Using a funnel (not provided), refill the oil tank with the proper volume of fresh hydraulic oil (fig. 12).

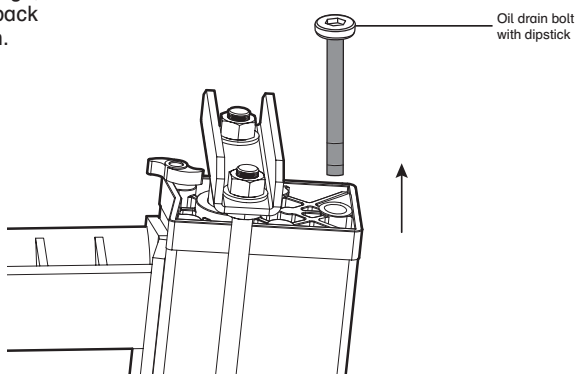


Maintenance

- Wipe the dipstick clean and insert it back into the oil tank to check for the oil level.
- Remove the dipstick and check for oil level. The level of the refilled oil should be between the 2 grooves of the dipstick. If not, add or decrease the amount of oil in the tank until the level is between the 2 grooves of the dipstick.



- After verifying that the oil level is correct, insert the bolt with dipstick back into the oil tank. Tighten the drain bolt in order to avoid leakage, and then place the log splitter back to its normal horizontal position.



Note:

- Check the oil level regularly and before starting the log splitter. Ensure that the oil level is between the 2 grooves on the dipstick. When the oil level is below the lower groove, refill the oil tank before operating the log splitter.
- Dispose of used oil only at an authorized collection point, or follow the regulations that are in effect in your area.

SHARPENING THE BLADE

After using the log splitter for some time, sharpen the blade or wedge using a fine-toothed file. Smooth out any burns or crushed areas along the cutting edge.

CLEANING

- Clean the log splitter using a clean, damp cloth. Use a soft brush on the splitting area and the motor ventilation area to remove any wood debris.
- DO NOT immerse the log splitter in water or other cleaning agents.

STORAGE

- Turn off the motor and unplug the log splitter from the power supply.
- Close the bleed screw and clean any debris from the log splitter before storing.
- Store the log splitter in a cool, dry location that is not accessible to children and other unauthorized persons. Secure the log splitter and make sure it cannot fall over and cause damage or injury.

Troubleshooting

Problem	Possible Reason	Solution
The log splitter does not split logs.	The log is not positioned correctly.	Refer to the Operation section for instructions on proper log loading.
	The size or hardness of the log exceeds the capacity of the machine.	Reduce the size of the log before splitting it on the log splitter.
	The wedge cutting edge is blunt.	Refer to “Sharpening the blade” under the Maintenance section for instructions on how to sharpen the cutting edge.
	There is an oil leak.	Locate the leak, and call the helpline.
	An unauthorized adjustment was made to the maximum pressure limiting screw—a lower maximum pressure was set.	Call the helpline.
The log pusher moves jerkily, makes an unfamiliar noise, or vibrates excessively.	Not enough hydraulic oil and too much air in the hydraulic system.	Check the oil level, and refill the oil if necessary. If the problem persists, call the helpline.
Oil leaks around the ram cylinder or from other points.	Air was sealed in the hydraulic system during operation.	Loosen the bleed screw by 3 or 4 rotations before operating the log splitter.
	The bleed screw was not tightened before moving the log splitter.	Tighten the bleed screw before moving the log splitter.
	The hydraulic control valve assembly and/or seal are worn.	Call the helpline.



Used electrical products are recyclable and should not be discarded in your regular domestic waste. Please actively support us in conserving resources and protecting the environment by returning this appliance to a collection centre (if available).



Do not dump used oil into drains, soil, or water. Dispose of used oil only at an authorized collection point or follow the regulations that are in effect in your area.

WARRANTY

For TWO YEARS from the date of purchase within Canada, YARDWORKS CANADA will, at its option, repair or replace for the original purchaser, free or charge, any part or parts found to be defective in material or workmanship.

This warranty does not cover:

1. Any part that has become inoperative due to misuse, commercial use, abuse, neglect, accident, improper maintenance, or alteration; or
2. The unit, if it has not been operated and/or maintained in accordance with the owner's manual; or
3. Normal wear, except as noted below;
4. Routine maintenance items such as lubricants, blade sharpening;
5. Normal deterioration of the exterior finish due to use or exposure.

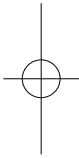
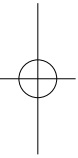
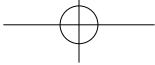
Full One Hundred Twenty Days Warranty on Normal Wear Parts: Normal wear parts are defined as blade adaptors, blades, grass bags and tires. These parts are warranted to the original purchaser to be free from defects in material and workmanship for a period of one hundred twenty (120) days from the date of retail purchase.

How to Obtain Service: Warranty service is available by calling the toll-free helpline, at 1 866-523-5218. The factory will not accept the return of a complete unit unless prior written permission has been extended by **YARDWORKS CANADA**.

Transportation Charges: Transportation charges for the movement of any power equipment unit or attachment are the responsibility of the purchaser. The purchaser must pay transportation charges for any part submitted for replacement under this warranty unless such return is requested in writing by **YARDWORKS CANADA**.

Other Warranties: All other warranties, express or implied, including any implied warranty of merchantability is limited in its duration to that set forth in this express limited warranty. The provisions as set forth in this warranty provide the sole and exclusive remedy of **YARDWORKS CANADA** obligations arising from the sale of its products.

YARDWORKS CANADA will not be liable for incidental or consequential loss or damage.



Imported by YardWorks Canada
Toronto, Canada M4S 2B8

