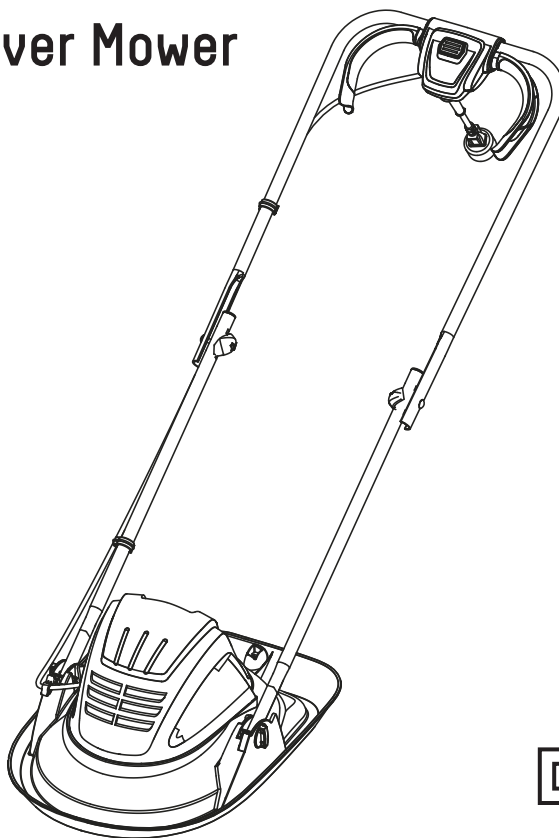


CERTIFIED™/MC

model number 060-1707-0

Electric Hover Mower



Intertek

3084514

Conforms to UL STD 82
Certified to CSA STD.
C22.2 No. 147-15

IMPORTANT:

Read and follow all safety rules and operating instructions
before using this product

Instruction Manual

model no. 060-1707-0

TABLE OF CONTENTS	PAGE
Contents	2
Product Specifications	2
General Safety Rules	3
Electrical Information	5
Symbols	7
Know Your Hover Mower	8
Assembly	9
Operation	11
Maintenance	15
Troubleshooting	17
Exploded View	18
Parts List	19
Warranty	20

Electric Hover Mower	
Voltage	120 V~60 Hz
Motor	11 A
Motor Speed	8000 RPM
Cutting path:	11 1/2" (29 cm)
Height adjustments :	1/4 or 1 1/4" (1 or 3.3 cm)
Weight :	10 lb 8 oz (4.8 kg)

- This hover mower is designed for cutting grass and similar soft vegetation and for trimming grass edges in private and hobby garden areas which are not accessible with a lawn mower.
- The device should not be used in public gardens, parks, sports centres or at roadsides as well as in agriculture and forestry.
- This hover mower is not allowed to be used for cutting or chopping the following, otherwise, there is a risk of injury.
 - Hedges, shrubs and bushes,
 - Flowers,
 - In terms of composting.
- This hover mower is not intended for use by persons with reduced physical, sensory or mental capabilities, or lack of experience and knowledge.
- Children should be supervised to ensure that they do not play with the hover mower.
- If the supply cord is damaged, it must be replaced by the manufacturer, its service agent or similarly qualified persons in order to avoid a hazard.
- Wear protective glasses or goggles.
- Never allow children or people unfamiliar with the instructions to use the hover mower.
- Stop using the hover mower while people, especially children, or pets are nearby.
- Only use the hover mower in daylight or good artificial light.
- Before using the hover mower and after any impact, check for signs of wear or damage and repair as necessary.
- Never operate the hover mower with damaged guards or without the guards in place.
- Keep hands and feet away from the cutting line at all times and especially when switching on the motor.
- Always return the machine to its normal operating position before switching on.
- Never fit metal cutting elements.
- Never use replacement parts or accessories not provided or recommended by the manufacturer.
- Disconnect the hover mower from the electrical supply before checking, cleaning or working on the hover mower and when it is not in use.
- Always ensure that ventilation openings are kept clear of debris.
- Do not wear loose clothing or jewellery. They can be caught in moving parts. Use of rubber gloves and footwear is recommended when working outdoors.
- Keep hair, loose clothing, fingers, and all parts of body away from openings and moving parts.



WARNING!

- When using the machine the safety rules must be followed. For your own safety and that of bystanders please read these instructions before operating the machine. Do not use the machine without reading the instruction sheet. Save these instructions.
- Use outdoor extension cords marked SW-A, SOW-A, STW-A, STOW-A, SJW-A, SJTA, SJTW-A, or SJTOWA. These cords are rated for outdoor use and reduce the risk of electric shocks.

ADDITIONAL SAFETY INSTRUCTIONS FOR YOUR HOVER MOWER

- Do not expose to moisture.
- Use only on AC electrical supply voltage shown on the product rating label.
- Avoid operating your hover mower in wet grass, where feasible.
- Take care in wet grass or you may lose your footing.
- On slopes, be extra careful of your footing and wear nonslip footwear.
- Do not walk backwards when trimming or you could trip. Walk, never run.
- Switch off before pushing the hover mower over surfaces other than grass.
- Never pick up or carry a hover mower by the cord.
- Do not lean over the hover mower guard as objects may be thrown by the rotating TrimFast blades.
- Keep all nuts, bolts and screws tight to be sure the hover mower is in safe working condition.
- To avoid the risk of injury keep fingers and hands clear of the rotating blades on the leading edge of the guard.
- Avoid Unintentional Starting – Don't carry plugged-in appliance with your finger on the switch. Be sure the switch is off when plugging in.
- Don't Overreach – Keep proper footing and balance at all times.
- Stay Alert – Watch what you are doing. Use common sense.
- Do not operate appliance when you are tired or under the influence of drugs or alcohol.

MAINTENANCE

- After use, disconnect the hover mower from the power source and check for damage.
- When not in use, store the hover mower out of the reach of children.
- Electrical powered hover mowers should only be repaired by an authorised service agents.
- Use only manufacturers recommended replacement parts and accessories.
- Preparation for use, operation and maintenance of the hover mower:
 - Read the instructions carefully.
 - Be familiar with the controls and proper use of the hover mower.
 - Before use, check the supply and extension cord for signs of damage or aging.
 - If the cord becomes damaged during use, disconnect the cord from the power supply immediately. **DO NOT TOUCH THE CORD BEFORE DISCONNECTING THE SUPPLY.**
 - Do not use the hover mower if the cord is damaged or worn.

**WARNING!**

- Cutting elements continue to rotate after the motor is switched off.
- Keep extension cords away from cutting elements.
- It is recommended that hover mowers should be supplied via a ground fault interrupter (GFI) with a tripping current of not more than 30 mA.

DOUBLE INSULATED

The hover mower is double insulated to provide a double thickness of insulation between you and the tool's electrical system. All exposed metal parts are isolated from the internal metal motor components with protective insulation.

GROUNDING INSTRUCTIONS

IN THE EVENT OF A MALFUNCTION OR BREAKDOWN, grounding provides the path of least resistance for electric current, and reduces the risk of electric shock. This tool is equipped with a POLARIZED plug. The plug **MUST** be plugged into a matching grounded extension cord in accordance with all local codes and ordinances. **DO NOT MODIFY THE PLUG PROVIDED.** If it will not fit the properly grounded extension cord, have the proper outlet installed by a qualified electrician. Ground Fault Circuit Interrupter (GFCI) protection should be provided on the circuit(s) or outlet(s) to be used for the gardening appliance. Receptacles are available having built-in GFCI protection and may be used for this measure of safety.



WARNING!

- TO AVOID ELECTRICAL HAZARDS, FIRE HAZARDS, OR DAMAGE TO THE TOOL, USE PROPER CIRCUIT PROTECTION. YOUR HOVER MOWER IS WIRED AT THE FACTORY FOR 120 V OPERATION. CONNECT TO A 120 V, 15 A CIRCUIT, AND USE A 15 A TIME-DELAYED FUSE OR CIRCUIT BREAKER. TO AVOID SHOCK OR FIRE, IF THE EXTENSION CORD IS WORN, CUT OR DAMAGED IN ANY WAY, REPLACE IT IMMEDIATELY. TO REDUCE THE RISK OF ELECTRIC SHOCK, THIS APPLIANCE HAS A POLARIZED PLUG (ONE BLADE IS WIDER THAN THE OTHER) AND WILL REQUIRE THE USE OF A POLARIZED EXTENSION CORD. THE APPLIANCE PLUG WILL FIT INTO A POLARIZED EXTENSION CORD ONLY ONE WAY. IF THE PLUG DOES NOT FIT FULLY INTO THE EXTENSION CORD, REVERSE THE PLUG. IF THE PLUG STILL DOES NOT FIT, OBTAIN A CORRECT POLARIZED EXTENSION CORD. A POLARIZED EXTENSION CORD WILL REQUIRE THE USE OF A POLARIZED WALL OUTLET. THIS PLUG WILL FIT INTO THE POLARIZED WALL OUTLET ONLY ONE WAY. IF THE PLUG DOES NOT FIT FULLY INTO THE WALL OUTLET, REVERSE THE PLUG. IF THE PLUG STILL DOES NOT FIT, CONTACT A QUALIFIED ELECTRICIAN TO INSTALL THE PROPER WALL OUTLET. **DO NOT CHANGE THE EQUIPMENT PLUG, EXTENSION CORD RECEPTACLE, OR EXTENSION CORD PLUG IN ANY WAY.**
- USE ONLY IDENTICAL REPLACEMENT PARTS WHEN SERVICING THE HOVER MOWER, TO AVOID INJURY.
- DOUBLE INSULATION DOES NOT TAKE THE PLACE OF NORMAL SAFETY PRECAUTIONS WHEN OPERATING THIS HOVER MOWER.
- TO AVOID ELECTROCUTION:
 1. Use only identical replacement parts when servicing a tool with double insulation. Servicing should be performed by a qualified technician.
 2. Do not use in wet or damp areas or expose to rain.

GUIDELINES FOR USING EXTENSION CORDS

USE THE PROPER EXTENSION CORD. Make sure your extension cord is in good condition. When using an extension cord, be sure to use one heavy enough to carry the current your product will draw. An undersized cord will cause overheating. The table below shows the correct size to use depending on cord length and nameplate ampere rating. If in doubt, use the next heavier gauge. The smaller the gauge number, the heavier the cord.

Minimum Gauge for Extension Cords (AWG)
(when using 120 V only)

Ampere Rating		Total Length of Cord in Feet (metres)			
More Than	Not More Than	25 (7.6 m)	50 (15 m)	100 (30.4 m)	150 (45.7 m)
0	6	18	16	16	14
6	10	18	16	14	12
10	12	16	16	14	12
12	16	14	12	Not Recommended	

Make sure your extension cord is properly wired and in good electrical condition. Always replace a damaged extension cord or have it repaired by a qualified person before use. Keep extension cords away from sharp objects, excessive heat and damp or wet areas.

Use a separate electrical circuit for your tools. This circuit should comprise a wire of at least 12 gauge and should be protected with a 15 A time-delayed fuse. Before connecting the motor to the power line, make sure the switch is in the OFF position and the electric current is identical to that stamped on the motor nameplate. Running at a lower voltage will damage the motor.







**CAUTION!**

ALWAYS MAKE SURE THAT YOUR OUTLET IS PROPERLY GROUNDED. IF UNCERTAIN, HAVE IT CHECKED BY A CERTIFIED ELECTRICIAN.

WARNING!

- THIS HOVER MOWER IS FOR OUTDOOR USE ONLY. DO NOT EXPOSE TO RAIN OR USE IN DAMP LOCATIONS.
- ALTHOUGH THIS HOVER MOWER IS DOUBLE INSULATED, THE EXTENSION CORD AND RECEPTACLE MUST STILL BE GROUNDED WHILE IN USE TO PROTECT THE OPERATOR FROM ELECTRIC SHOCKS.

Some of the following symbols may be used on this product. Please study them and learn their meaning. Proper interpretation of these symbols will allow you to operate the product better and safer.

SYMBOL	NAME	DESIGNATION/EXPLANATION
V	Volts	Voltage
A	Amperes	Current
Hz	Hertz	Frequency (cycles per second)
W	Watts	Power
min	Minutes	Time
~	Alternating Current	Type of current
==	Direct Current	Type or a characteristic of current
	Class II Construction	Double-insulated construction
no	No Load Speed	Rotation speed, at no load
/min	Per Minute	Revolutions, strokes, surface speed, orbits etc., per minute.
	Wet Conditions Alert	Do not expose to rain or use in damp locations
	Read The Operator's Manual	To reduce the risk of injury user must read and understand the operator's manual before using this product.
	Safety Alert	Precautions that involve your safety.
	Long Hair	Failure to keep long hair away from the air inlet could result in personal injury.
	Eye and Hearing Protection	Wear eye and hearing protection when operating this equipment.



Always bring hand-held appliances indoors after use. Never leave a hand-held appliance outdoors.



This is the handle paking position when not in use. Do not use in this position.



No.	Description	No.	Description
1	Switch box	8	Cable clamp
2	Start / Stop switch lever	9	Retaining pin (See page 9)
3	Upper handle	10	Bolts (See page 10)
4	Handle fastening wing nuts	11	Cutting head (See page 11)
5	Lower handle	12	Fan (See page 11)
6	Safety lock-off button	13	Plastic blade (See page 14)
7	Cable strain relief hook	14	Slot (See page 15)

Handle Assembly

- 1 Place the ends of the lower handle (5) into the slots. (Fig. 1)



Fig. 1

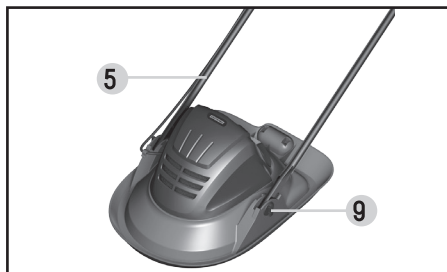


Fig. 2

- 2 Secure the lower handle (5) to the deck by firmly pushing a retaining pin (9) through the retaining holes on the deck and through the bottom end of the handle. (Fig. 2)
Repeat on the other side.

- 3 Ensure the upper handle (3) and the lower handle (5) are aligned correctly and move freely. (Fig. 3)



Fig. 3

- 4 Fix the upper handle (3) section to the lower handle (5). Use the bolts (10) and wing nuts (4) provided. There are two possible height positions. Choose the one most suitable to the operator's height. (Fig. 4)

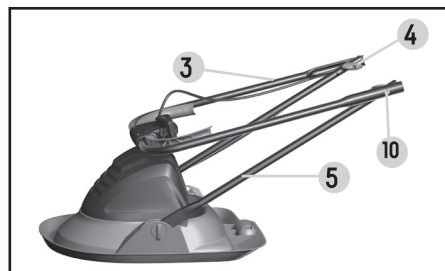


Fig. 4

- 5 Clip the cable to the handle bar with the cable clamp (8) provided.

When the two wing nuts are loosened, the handle can be folded for easy storage. (Fig.4) Ensure the power cable is not caught between the folding sections.

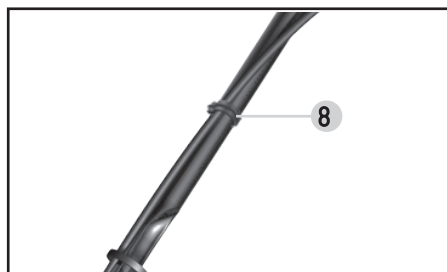


Fig. 5

- 6 Hook the cable through the cable strain relief hook to help prevent it from coming loose or disconnected while you are mowing. (Fig. 5)

Setting the Cutting Heights

- 1 There are 2 cutting heights. (Fig 6) shows the lower cutting height setting, 10 mm. (Fig 7) shows the higher cutting height setting, 33 mm. The blade is pre-set to the 33 mm cutting height in the factory.

Height of cut is adjusted by turning over the cutting head (11) .

Disconnect from the main electricity supply and wait until the fan (12) and the cutting head (11) have stopped rotating.

Turn your product upside down.

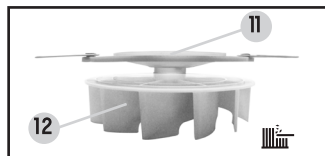


Fig. 6

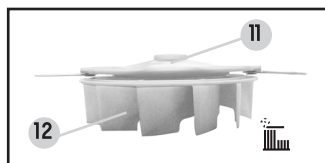


Fig. 7

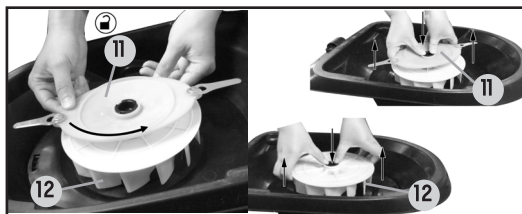


Fig. 8

- 2 To remove the cutting head (11) and fan (12) (Fig. 8), hold the fan (12) firmly and twist the cutting head (11) counterclockwise as illustrated. Hold the cutting head (11) in the centre and remove as illustrated. Hold the fan (12) in the centre and remove as illustrated. Inspect for damage and clean as necessary before replacing the fan and the cutting head.



IMPORTANT!

Ensure the power cord is disconnected from the mains supply and wait until the cutting head has stopped rotating before adjusting the cutting height.

WARNING!

A higher cut height (Fig 7) should generally be selected for the first cut of the season. When cutting longer grass, cut the grass in 2 or more passes, first on the higher cutting setting then on the lower cutting setting. These techniques will help to avoid over-stressing your grass.

- 3 To refit the fan (12) and set the cutting height (Fig. 9), replace the fan (12) as illustrated on to the motor drive shaft. Position the cutting head (11) onto the motor drive shaft according to the height of cut you need. Position the blades flush with the fan if you want the higher setting (33 mm). Turn the cutter head (11) the other way around, with a larger space between the fan (12) and the cutting blades, if you want the lower cutting height setting (10 mm). Hold the fan (12) firmly and twist the cutting head (11) clockwise as illustrated. Ensure it is securely locked into position.

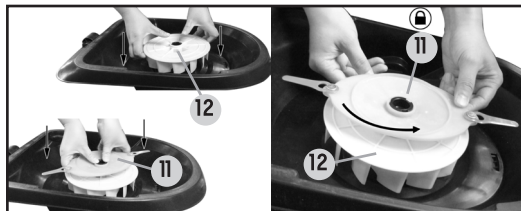


Fig. 9



IMPORTANT!

Ensure the power cord is disconnected from the mains supply and wait until the cutting head has stopped rotating before adjusting the cutting height.

ON/OFF Operation

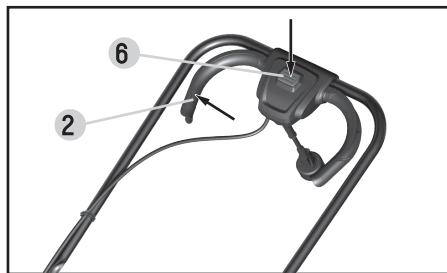


Fig. 10

- 1 Connect the mower to your power supply socket. Ensure the cable or extension cable (if you are using one) is hooked through the cable strain relief hook. (Fig 10)
Before switching on, ensure that the mower is not in contact with any foreign objects.
To switch on, press the safety lock-off button (6) on the handle, then activate the start/stop switch lever (2). Release the lock-off button (6).
To switch off, release the start/stop switch lever (2).
Start cutting once the mower has reached full speed.

NOTE! There are two start/stop switch levers fitted, either one can be used for starting the product.



WARNING!

After switching off the equipment, the blade may continue to turn for several seconds. Do not touch the moving blade. There is a risk of serious injury.

Operation

Before you connect the equipment to the main supply, make sure that the data on the rating plate corresponds to your main supply.

A safe distance between the blade deck and the user is provided by the length of the handle. This distance must be maintained at all times. Take special care when mowing and changing direction on embankments and slopes. Ensure that you have a secure surface to stand on, wear shoes with anti-slip soles that offer good grip, and long trousers. Always mow across the slope (not in up or down direction).

Do not use the mower on gradients exceeding 15° for safety reasons.

Take special care when moving backwards and pulling the hover mower. Never pull the hover mower backwards when the motor is running.

Mowing Advice

Cut your grass twice a week during the growing season. Your lawn will be damaged if more than a third of its length is cut at one time.

Keep the under side of the mower casing clean and remove all grass deposits from it. Deposits make it more difficult to start the mower and also adversely affect the mowing quality and the grass collection. Switch off the motor before you carry out any inspections of the cutting head. Remember that the cutting head will continue to turn for a few seconds after the motor has been switched off. Never attempt to stop the cutting head.

The cutting system must be kept in good condition and inspected before and after use. Switch off the motor before you carry out any inspections of the cutting system. Remember that the cutting head will continue to turn for a few seconds after the motor has been switched off. Never attempt to stop the cutting head.

Check plastic cutters for wear and replace when necessary. Plastic cutters should be straight. Replace if bent or twisted.

Place the mains lead in loops on the ground near the wall socket. Mow away from the socket and cable and ensure that the mains lead is always on the section of lawn that you have already mowed so that you do not run over the mains lead with the mower.



IMPORTANT!

Always ensure the on/off switch is working correctly. Do not use if you suspect a fault. Before you perform any repair or maintenance work on the machine, ensure that the plastic cutter is not rotating and that the power supply is disconnected.

Cleaning

Always disconnect the mains power plug before engaging in any cleaning work.

Cleaning

- Remove this grass from under the deck with a soft brush.
- Using a soft brush remove grass clippings form all ventilation openings and the roller.
- Remove the cutting head to gain access to the fan and clean it with a soft brush.
- Wipe over the surface of your product with a dry cloth.

Blade Maintenance

Always handle the plastic blades with care, sharp edges could cause injury. Use gloves.

Plastic blades will wear over time or may break if they hit a solid object. Always replace blades in pairs when worn or broken.

Carry out the following steps to change the plastic blades:

- 1 Disconnect from the mains electricity supply and wait until the cutting head (11) has stopped rotating.
 - Turn the mower over and rest it carefully on its side.
 - Push the plastic blade (13) towards the centre of cutting head (11). (Fig.11) Lift the plastic blade away form cutting head.
 - If a plastic blade (13) has broken during operation remove both blades and replace them immediately. Always replace blades in pairs.

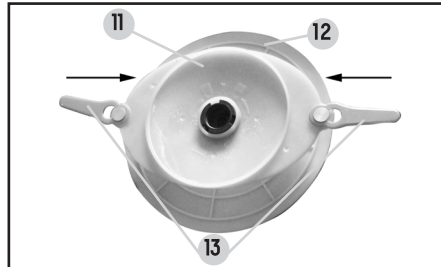


Fig. 11



IMPORTANT!

Always wear work gloves when engaging in any maintenance work. Never use water for cleaning your product. Do not clean with chemicals, including petrol, or solvents as some can destroy critical plastic parts.

- 2 Fit new plastic blades into the slots (14) on each side of the cutting head and pull into place. (Fig.12)

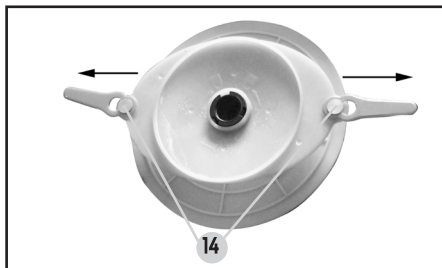


Fig. 12

Maintenance and Storage

- Replace plastic blades, bolts, nuts or screws, whenever necessary.
- Ask a technical servicing dealer to carry out any service or repairs required.
- Store in a dry place, out of reach of children.

NOTE! Plastic blades must be replaced in pairs to retain balance. Two plastic cutters of the same type must be fitted.

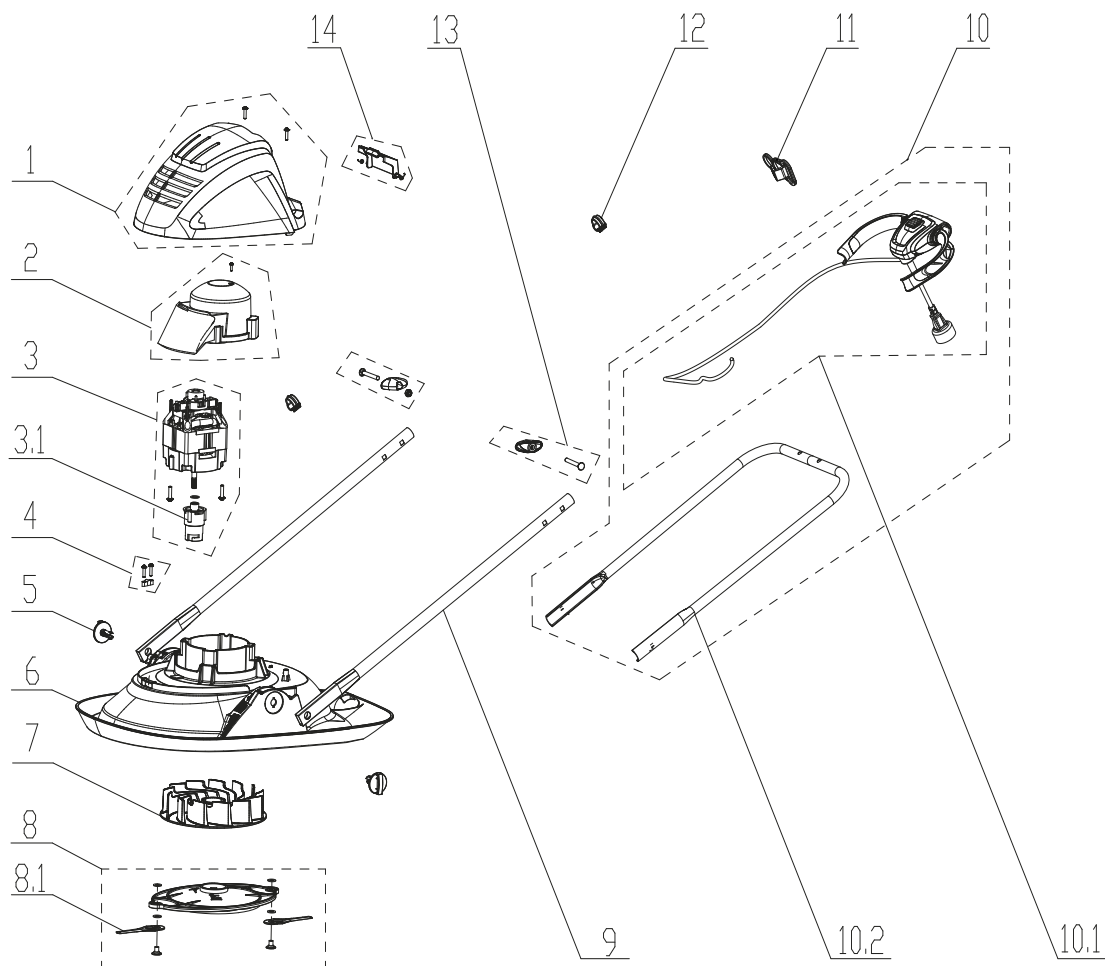


IMPORTANT!

Ensure plastic cutters are correctly located. Never fit a metal bar blade to this product. If the blade has broken, it will be difficult to take it off by hand, or even may hurt your fingers, so it is necessary to wear gloves or other protective equipment to prevent harming your fingers.

The following table provides solutions to common problems encountered with the mower.

Fault	Possible Cause	Solution
Mower does not start	No power at mains socket	Check the fuse, switch, socket, cable, wire and have any repairs carried out by a qualified electrician
	Defective on/off switch	Repair by a qualified technician required
	Worn carbon brushes	
	Defective motor	
Poor floatation	Fan is blocked by grass	Disconnect from mains and clean the deck and the fan.
Excessive vibration	Plastic blades broken or missing	Replace plastic blades
	Plastic blades fitted incorrectly	Fit the plastic blades correctly



Item No.	Part No.	Description	QTY
1	111023101	Motor Housing	1
2	111022102	Motor Cap	1
3	111023102	Motor Assembly	1
3.1	111022104	Hub	1
4	551008111	Cable Clamp Assembly	1
5	111023103	Lower handle fix pin	2
6	111023104	Deck Assembly	1
7	111022107	Fan/Impeller	1
8	111022108	Blade Carrier Assembly	1
8.1	111022109	Blade	2
9	111023105	Lower Handle	2
10	111023106	Upper Handle Assembly with Switch box	1
10.1	111023107	Switch Box Assembly	1
10.2	111022114	Upper Handle	1
11	111005128	Cord retainer	1
12	111001111	Cable Clip	2
13	111023108	Upper Handle Twist-lock Knob Assembly	2
14	111023109	Storage Box for Blades	1

This Certified product is guaranteed for a period of 1 year from the date of original retail purchase against defects in workmanship and materials.

Subject to the conditions and limitations described below, this product, if returned to us with proof of purchase within the stated warranty period and if covered under this warranty, will be repaired or replaced (with the same model, or one of equal value or specification), at our option. We will bear the cost of any repair or replacement and any costs of labour relating thereto.

These warranties are subject to the following conditions and limitations:

- a) a bill of sale verifying the purchase and purchase date must be provided;
- b) this warranty will not apply to any product or part thereof which is worn or broken or which has become inoperative due to abuse, misuse, accidental damage, neglect or lack of proper installation, operation or maintenance (as outlined in the applicable owner's manual or operating instructions) or which is being used for industrial, professional, commercial or rental purposes;
- c) this warranty will not apply to normal wear and tear or to expendable parts or accessories that may be supplied with the product that are expected to become inoperative or unusable after a reasonable period of use;
- d) this warranty will not apply to routine maintenance and consumable items such as, but not limited to, fuel, lubricants, vacuum bags, blades, belts, sandpaper, bits, fluids, tune-ups or adjustments;
- e) this warranty will not apply where damage is caused by repairs made or attempted by others (i.e. persons not authorized by the manufacturer);
- f) this warranty will not apply to any product that was sold to the original purchaser as a reconditioned or refurbished product (unless otherwise specified in writing);
- g) this warranty will not apply to any product or part thereof if any part from another manufacturer is installed therein or any repairs or alterations have been made or attempted by unauthorized persons;
- h) this warranty will not apply to normal deterioration of the exterior finish, such as, but not limited to, scratches, dents, paint chips, or to any corrosion or discolouring by heat, abrasive and chemical cleaners;
- i) this warranty will not apply to component parts sold by and identified as the product of another company, which shall be covered under the product manufacturer's warranty, if any.

Additional Limitations

This warranty applies only to the original purchaser and may not be transferred. Neither the retailer nor the manufacturer shall be liable for any other expense, loss or damage, including, without limitation, any indirect, incidental, consequential or exemplary damages arising in connection with the sale, use or inability to use this product.

Notice to Consumer

This warranty gives you specific legal rights, and you may have other rights, which may vary from province to province. The provisions contained in this warranty are not intended to limit, modify, take away from, disclaim or exclude any statutory warranties set forth in any applicable provincial or federal legislation.

**MADE IN CHINA
IMPORTED BY
TRILEAF DISTRIBUTION TRIFEUIL
TORONTO, CANADA M4S 2B8**