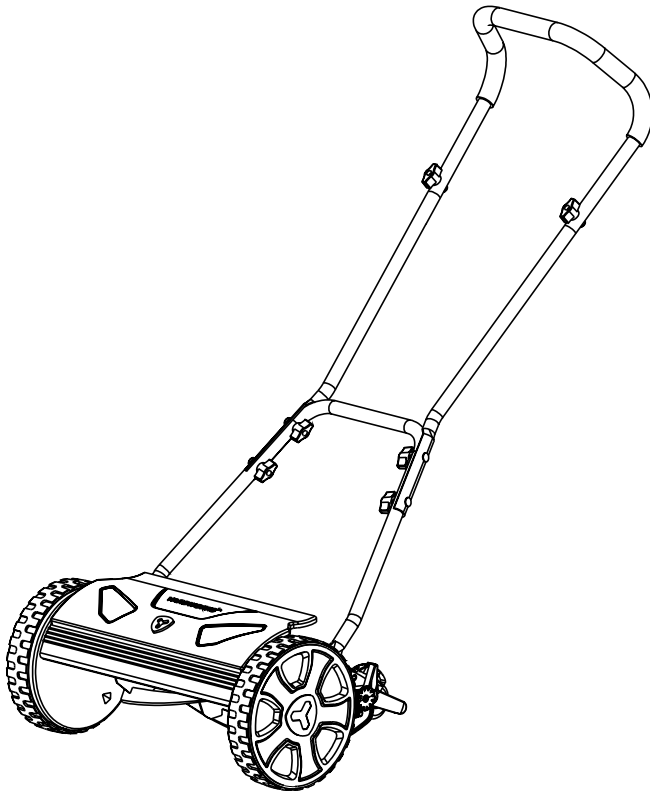




# YARDWORKS<sup>TM/MC</sup>

## Contact-free Reel Mower

model number 060-1500-0 | contact us: 1 866 523-5218



### **IMPORTANT:**

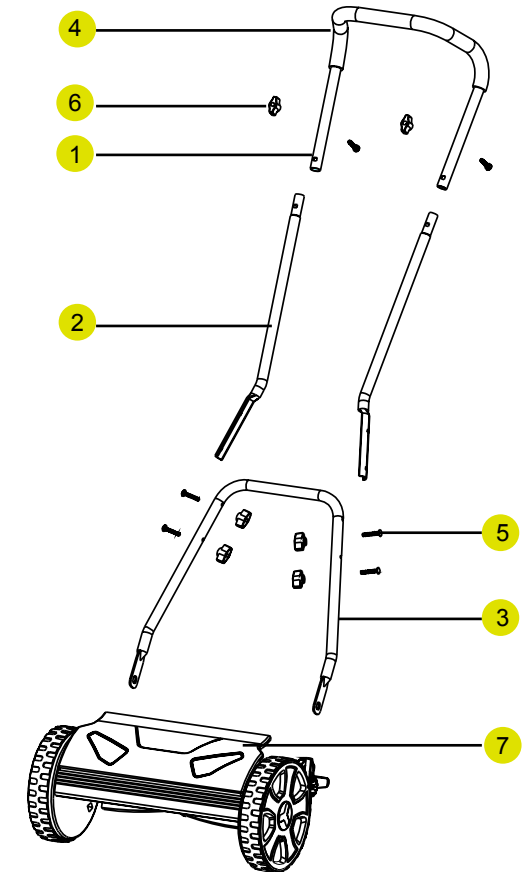
Read and understand all safety rules and operating instructions before using this product.

## **Instruction Manual**

SPECIFICATIONS	2
KNOW YOUR MOWER	3
EXPLODED VIEW	4
PARTS LIST	5
ASSEMBLY	6
ATTACHING THE HANDLE	8
CUTTING HEIGHT ADJUSTMENTS	9
OPERATION	9
CHECKING THE ADJUSTMENT	10
SAFETY AND MAINTANCE	11
MAINTENANCE	12

Cutting path:	14" (35.6cm)
Adjustments:	1/2-1 1/2" (13-38mm)
Weight:	16lb 15oz (7.7kg)

1. Top handle
2. Centre handle pieces
3. Lower handle
4. Foam grip
5. Carriage bolts
6. Knobs
7. Reel mower

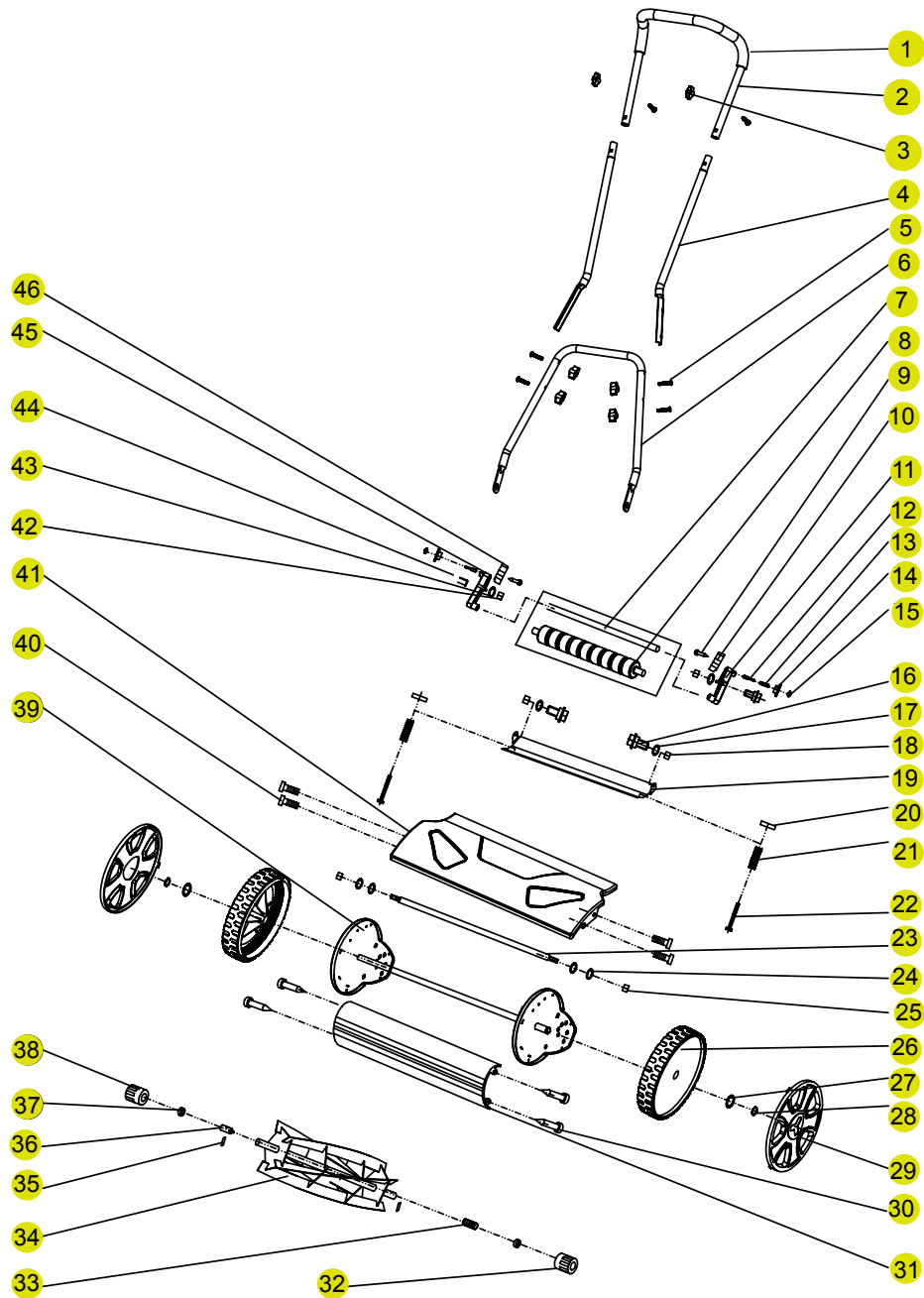


### KNOW YOUR REEL MOWER

Before attempting to assemble, empty carton and compare parts with parts lists above.

- Carefully remove the parts from the box.
- Inspect the parts to make sure no breakage or damage occurred during shipping.
- Do not discard the packing material until all parts are examined.
- If any parts are damaged or missing, please call 1-866-523-5218 for assistance.
- Be sure to tighten the knobs when assembled to prevent the handle from rocking.

Exploded View

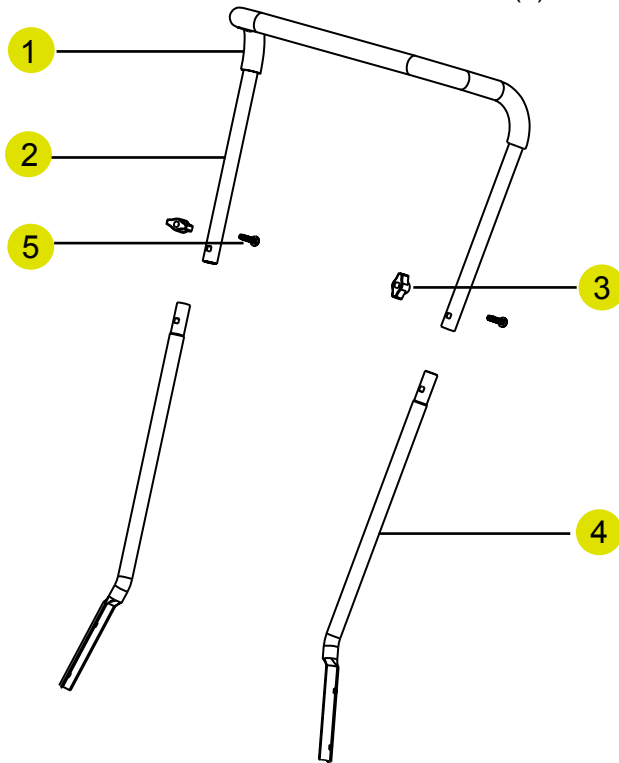


Parts List

Item	Description	Qty	Item	Description	Qty
1	Foam grip	1	24	Washer	4
2	Top handle	1	25	Nut M6	2
3	Knob	6	26	Wheel	2
4	Centre handle pieces	2	27	Adjusting washer	2
5	Bolt M6*35	6	28	Spring clip ring	2
6	Lower handle	1	29	Big wheel cover	2
7	Roller shaft	1	30	Taping	4
8	Roller	1	31	Cover	1
9	Self-taping screw bolt	2	32	Gear (L)	1
10	Indicator plate (L)	1	33	Spring ring	1
11	Roller bracket (L)	1	34	Cylinder blade assy	1
12	Roller adjusting shaft	2	35	Blade tongue plate	2
13	Adjusting shaft spring knob	2	36	Connector for shaft	1
14	Adjusting knob	2	37	Bearing	2
15	Clip ring	2	38	Gear (R)	1
16	Bolt	2	39	Joint part	1
17	Washer	2	40	Bolt	4
18	Nut M8	2	41	Cover	1
19	Blade	1	42	Nut M8	2
20	Bolt	2	43	Washer	2
21	Adjusting spring	2	44	Bolt	2
22	Adjusting bolt	2	45	Roller bracket (R)	1
23	Pull pole	1	46	Indicator plate (R)	1

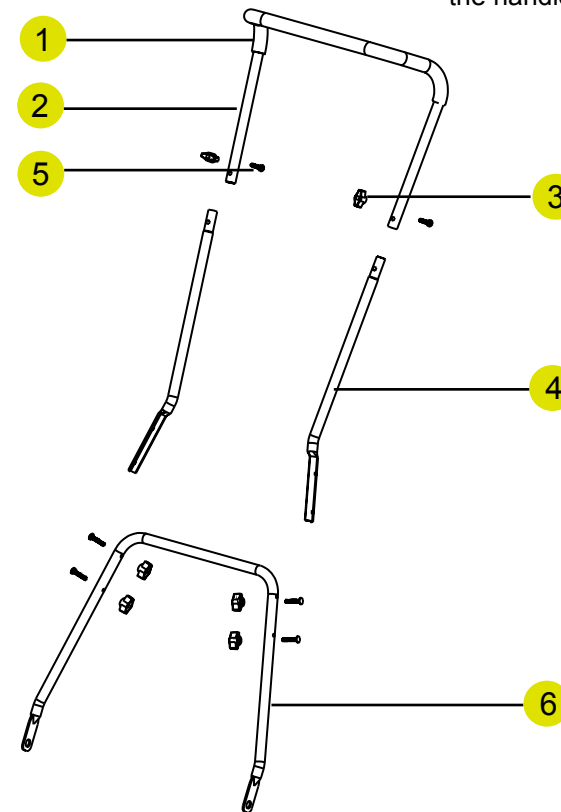
**ASSEMBLE THE HANDLE**

1. Insert the two centre handle pieces (4) into the left and right side of the top handle (2) and secure with two carriage bolts (5) and knobs (3) provided.



2. Attach the top handle sub-assembly previously assembled, to the lower handle (6) sub-assembly using four carriage bolts (5), and knobs (3) provided.

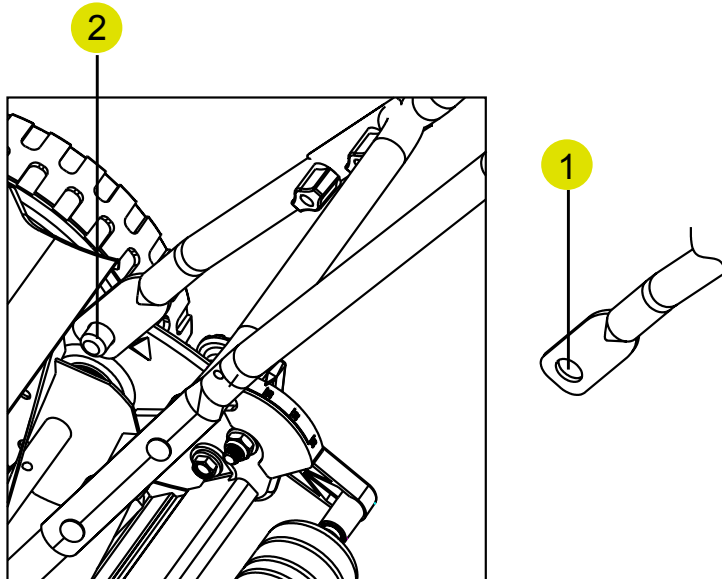
3. Tighten all the knobs on the joints of the handle assembly.



**NOTE:** Do not completely tighten knobs until assembly is complete.

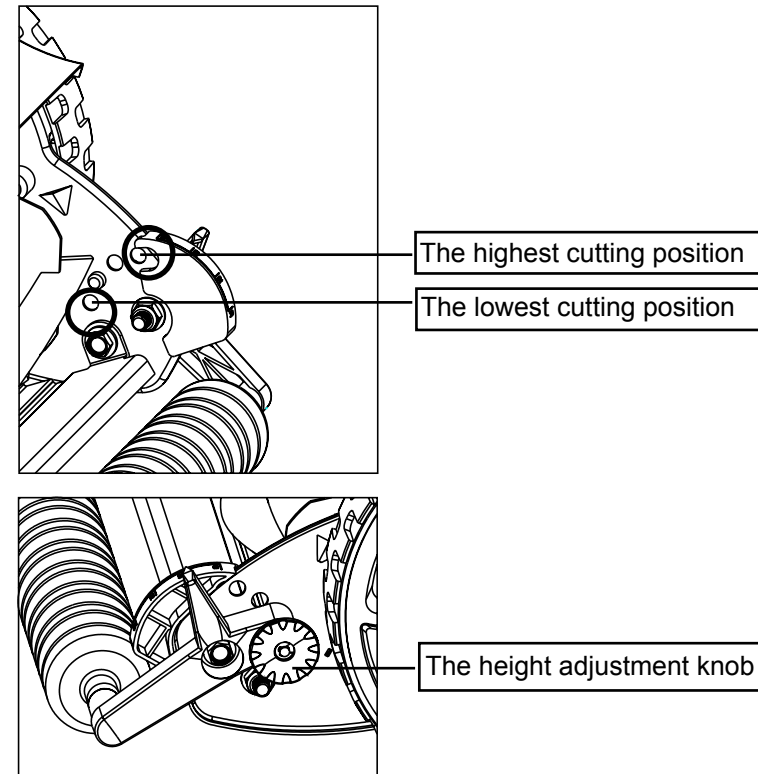
### ATTACHING THE HANDLE TO THE MOWER BASE

Align holes (1) at the lower end of each handle arm with posts (2) extending from the mower base side plates. Mount the holes onto the posts, one at a time, and press inward on handle to secure the fitting.



### CUTTING HEIGHT ADJUSTMENTS

- The cutting height of the mower adjusts from 1/2 – 1 1/2" (13 – 38 mm) with 4 positions for adjustment height by moving the height adjustment levers to the required position.
- To achieve the lowest cutting position, one at a time, move the adjustment levers on both sides, located next to the smaller wheels, up to the highest position.
- To achieve the highest cutting position, move the adjustment levers on both sides to their lowest position.
- Other cutting heights are achieved by moving the adjustment levers to any stop between the highest and lowest positions.

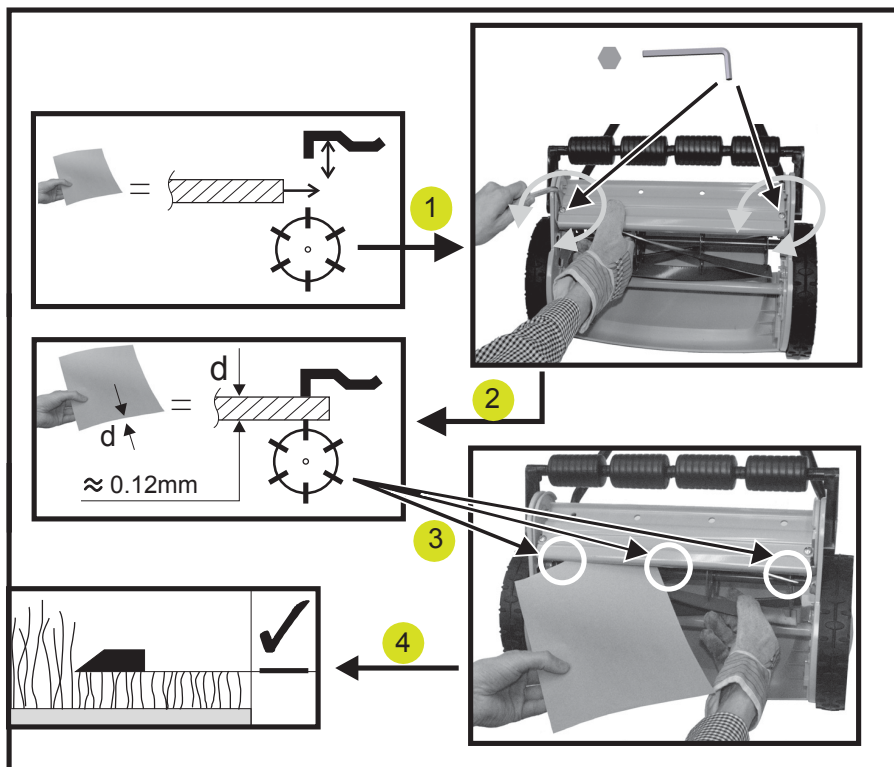


**NOTE:** The two adjustment levers **MUST** be set to the same position (height).

## CHECKING THE ADJUSTMENT

The cutting mechanism is preset. After a long period of use it may need to be readjusted. Check cutting performance and adjust if necessary.

1. Adjust the space between reel blades and cutter bar.
2. Turn the screw clockwise to move the lower blade towards the spindle blade. Turn the screw counter-clockwise to move the lower blade away from the spindle blade.
3. When the space equals the thickness of paper (0.12 mm), insert a piece of paper between the blades and the cutter bar, and quickly turn the wheel by hand.
4. All blades should slice the paper evenly.



## IMPORTANT SAFETY INFORMATION

- Never place hands, fingers, or feet inside the reel. Although a motor does not power this mower, when the wheels turn the reel spins and poses a cutting risk.
- Never mow when grass is wet as it can be slippery.
- Do not use the reel mower while barefoot or while wearing sandals.
- Walk behind and never run while using reel mower. Always make sure of your footing when using this reel mower.
- Never intentionally strike or hit trees, fences, etc. This can cause injuries or severely damage the reel mower mechanisms.
- Make sure your reel mower is in a safe operating condition. Do not attempt to operate this reel mower if damaged.
- Contact customer service or have the reel mower repaired by a qualified repair service provider before using

## CARE AND MAINTENANCE

1. A minimum amount of care is required to ensure smooth operation of your mower.
2. To avoid damage to mower or cutting blades, keep area to be mowed free of debris.
3. For best results, regularly apply lubricant to mower's cutting surfaces, cutting reel axle shaft and wheels.

## SHARPENING THE CUTTING BLADES:

1. Spread a thin layer of lapping compound on the front edge of the reel blades.

2. Adjust the cutter bar so that the blade has light but firm contact across the full width of the cutter bar.

Caution: Do not overtighten the adjusting screws, as this could damage the cutter bar. Tighten both screws during final adjustment.

3. Turn the reel blades until the front edge of the cutter bar blade is polished.

## CLEANING AND STORAGE

1. Clean the exterior of the machine thoroughly using a soft brush and cloth before storing. Do not use water, solvents or polishes.

2. Turn the mower on its side to clean the blade area.

**WARNING:** Do not place hands in the mower near blades. If grass cuttings are compacted in the blade area, remove using a wood or plastic cleaning tool appropriate for the cleaning of the blades.

3. Store the mower in a dry place. Do not place other objects on top of the mower during storage.

## CARE AND MAINTENANCE

Maintenance tip:

Reel mowers are relatively low maintenance. For consistent cutting follow these below instructions:

- Always keep the cutting bar properly adjusted. Refer to the instruction manual for further directions.
- Regularly clean and lube cutting edges with light spray oil.

Made in China. Imported by YardWorks Canada Toronto, Canada M4S 2B8

**WARNING:** Clean any grinding compound or debris from cutter bar blade, reel blade, pinions and pawls.

**NOTE:** Use industrial or value tapping compound between 100 and 240 grit. Lubricate the axle and pinion with a light film of wheel bearing grease.

**IMPORTANT:** Reel mowers have a difficult time with tall weeds such as dandelions and may bend the weeds instead of cutting them. Cut often to prevent long weeds from growing. When lengths are long weeds and tall grass will fold before contacting the cutting bar.

model number 060-1500-0 | contact us: 1 866 523-5218

### **2-YEAR LIMITED WARRANTY**

For TWO YEARS from the date of purchase within Canada, YARDWORKS CANADA will, at its option, repair or replace for the original purchaser, free of charge, any part or parts found to be defective in materials or workmanship.

### **THIS WARRANTY DOES NOT COVER:**

1. Any part that has become inoperative due to misuse, commercial use, abuse, neglect, accident, improper maintenance, or alteration; or
2. The unit, if it has not been operated and/or maintained in accordance with the owner's manual; or
3. Normal wear, except as noted below;
4. Routine maintenance items such as lubricants, blade sharpening;
5. Normal deterioration of the exterior finish due to use or exposure.

### **FULL 120-DAY WARRANTY ON NORMAL WEAR PARTS:**

Normal wear parts are defined as blade adaptors, blades, grass bags and tires. These parts are warranted to the original purchaser to be free from defects in material and workmanship for a period of one hundred twenty (120) days from the date of retail purchase.

### **HOW TO OBTAIN SERVICE:**

Warranty service is available by calling the toll-free helpline, at 1-866-523-5218. The factory will not accept the return of a complete unit unless prior written permission has been extended by YARDWORKS CANADA.

### **TRANSPORTATION CHARGES:**

Transportation charges for the movement of any power equipment unit or attachment are the responsibility of the purchaser. The purchaser must pay transportation charges for any part submitted for replacement under this warranty unless such return is requested in writing by YARDWORKS CANADA.

### **OTHER WARRANTIES:**

All other warranties, express or implied, including any implied warranty of merchantability is limited in its duration to that set forth in this express limited warranty. The provisions as set forth in this warranty provide the sole and exclusive remedy of YARDWORKS CANADA obligations arising from the sale of its products.

**YARDWORKS CANADA will not be liable for incidental or consequential loss or damage.**