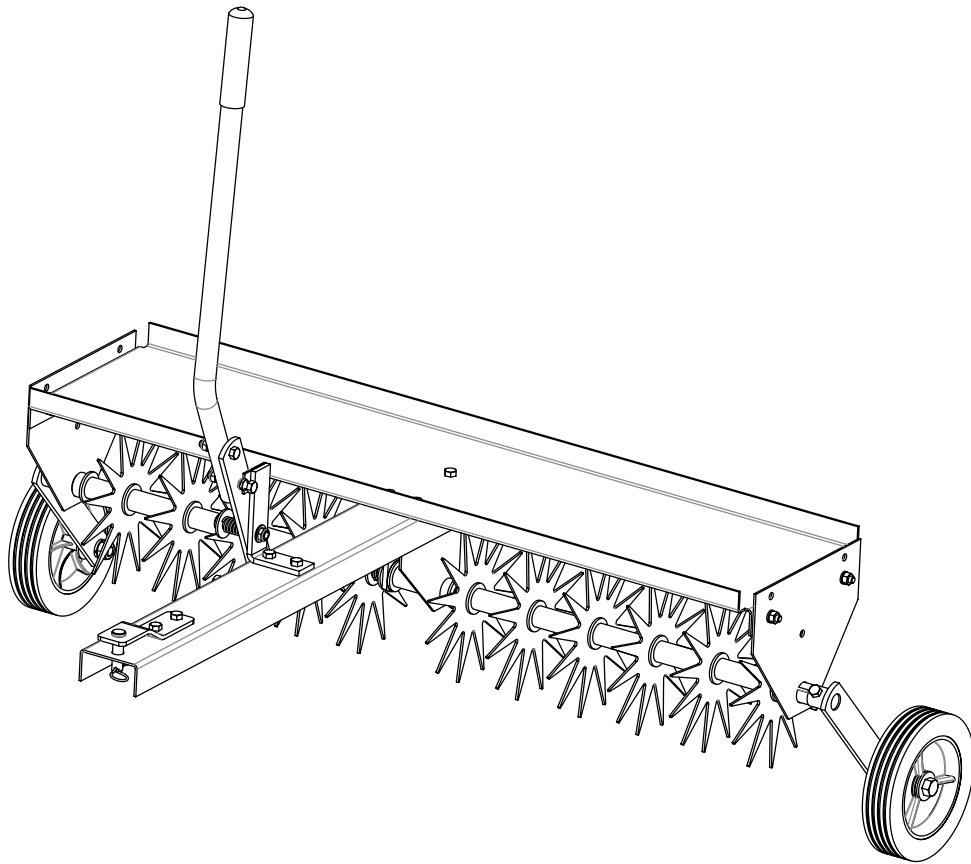


# CERTIFIED™

## Owner's Manual Model Number 060-0197-8 Spike Aerator



Caution: Carefully read all rules and instructions for safe operation. Retain this manual for reference.

### Manual Contents

Safety Instructions	2
Carton Contents	2
Assembly	4
Operation and Maintenance	13
Parts List and Support	14
Warranty	16

### Your New Spike Aerator

Congratulations on your purchase of a new Certified™ Spike Aerator. Your aerator has been engineered and built to give you the most dependable and best performing product possible.

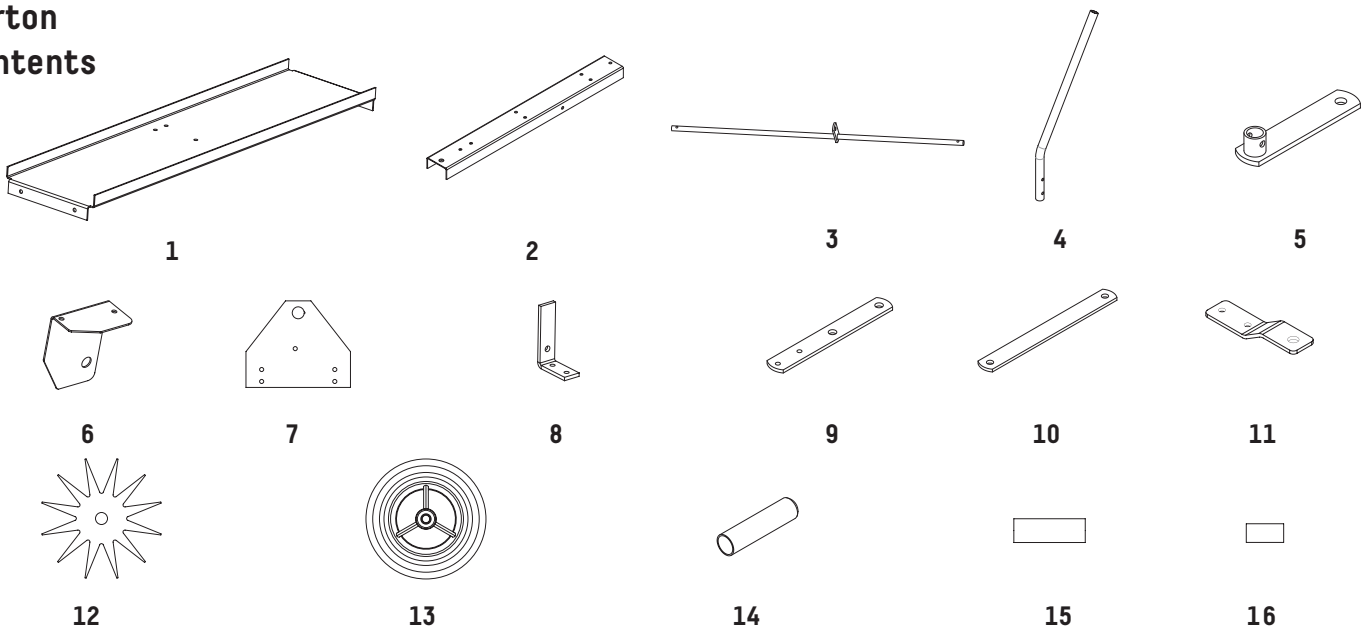
If you experience any problem you can not easily resolve, please feel free to contact our knowledgeable and helpful customer service department toll-free at 1 (844) 428-7277.

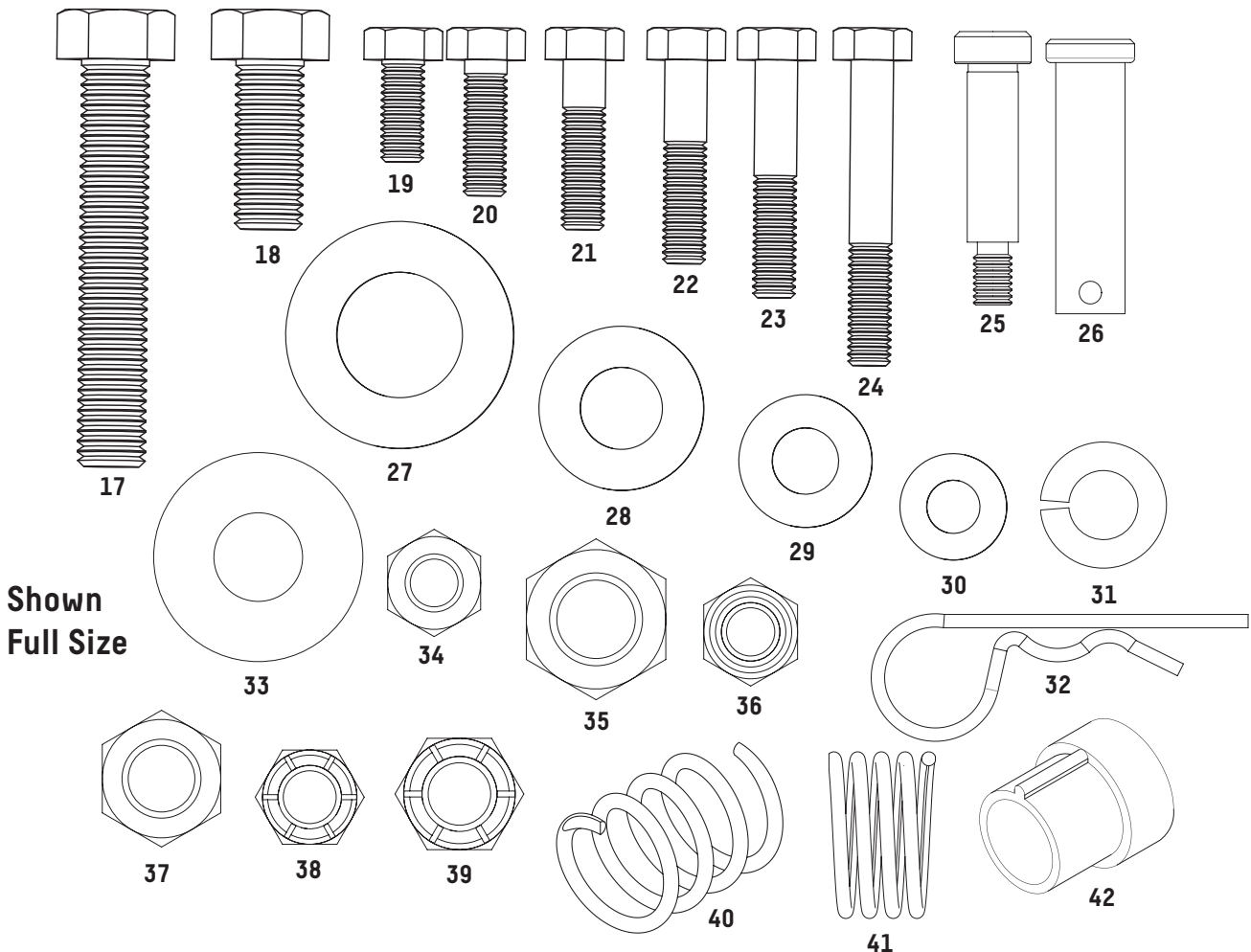


All power equipment can cause injury or property damage if operated improperly. Please read and observe the following safety rules and exercise caution at all times when operating equipment.

- Read and understand your tractor owner's manual and towing safety rules. Know how to operate your tractor before using any attachment.
- Never allow children to operate the towing vehicle. Do not allow adults to operate the vehicle without having read the owner's manual or receiving proper instruction.
- Do not allow anyone to ride or sit on tow-behind equipment during operation.
- Keep people, children and animals at a safe distance.
- Always wear substantial footwear. Do not wear loose fitting clothing that may get caught in moving parts.
- This unit may have sharp points. Handle with care.
- Keep your eyes and mind on your vehicle/attachment and area being covered. Do not let yourself be distracted.
- Stay alert for holes in the terrain and other hidden hazards.
- Tractor braking and stability may be affected with the attachment of this unit. Be aware of changing conditions on slopes. Refer to safety rules in your tractor owner's manual concerning safe operation on slopes. Stay Off Steep Slopes.
- Always operate up and down a slope, never across the face of a slope.
- This equipment should be operated at reduced speed(s) on rough terrain, along creeks and ditches and on hillsides, to prevent tipping or loss of control.
- Do not operate close to creeks, ditches or public highways.
- Always begin with the transmission in first (low) gear and engine at low speed, and gradually increase speed as conditions permit.
- Keep the vehicle and attachment in good operating condition and keep safety devices in place.
- Keep all nuts, bolts and screws tight to be sure the equipment is in safe working condition.
- The vehicle and attachment should be stopped and inspected for damage after striking a foreign object. Any damage should be repaired before restarting and operating the equipment.
- Follow the maintenance instructions as outlined in this owner's manual.
- Should not be towed at more than 4 MPH (6.4 km/h).

Carton Contents





Shown Full Size

Ref No.	Qty.	Description	Ref No.	Qty.	Description
1	1	Base Plate	23	1	5/16 x 1 3/4" Hex Head Bolt
2	1	Tow Bar	24	1	5/16 x 2 1/4" Hex Head Bolt
3	1	Axle	25	1	1/2 x 1 3/4" Shoulder Bolt
4	1	Handle	26	1	1/2 x 1 3/4" Clevis Pin
5	2	Wheel Brackets	27	26	3/4" Flat Washer
6	1	Centre Plate	28	5	1/2" Flat Washer
7	2	End Plate	29	1	3/8" Flat Washer
8	1	Handle Brace	30	2	5/16" Flat Washer
9	1	Lever Link	31	9	5/16" Lock Washer
10	1	Linkage Bar	32	1	#14 Hitch Pin Clip
11	1	Clevis Plate	33	2	1/2" Nylon Washer
12	11	Aerator Blade	34	7	5/16" Nylock Nut
13	2	Wheel	35	4	1/2" Nylock Nut
14	1	Handle Grip	36	9	5/16" Hex Head Nut
15	9	1 x 3" Spacer	37	2	1/2" Jam Nut
16	1	1 x 2" Spacer	38	2	5/16" Nylock Nut (thin) Jam
17	2	1/2 x 3" Hex Head Bolt	39	1	3/8" Nylock Nut (thin) Jam
18	1	1/2 x 1 1/2" Hex Head Bolt	40	1	Compression Spring
19	9	5/16 x 3/4" Hex Head Bolt	41	2	Spring
20	2	5/16 x 1" Hex Head Bolt	42	3	Bushing
21	1	5/16 x 1 1/4" Hex Head Bolt	43	2	1 x 3/4" Spacer (Not Shown)
22	2	5/16 x 1 1/2" Hex Head Bolt			

### Tools Needed For Cart Assembly

- Minimum—
- (2) Adjustable Wrenches
- (1) Hex Wrench

### Remove from Carton

Remove and lay out all parts and hardware packages from the carton. Identify them using the illustrations on pages 2 and 3.

### Assembly Tip:

Loosely tighten all nuts and bolts at first. Fully tighten when the unit is completely assembled.

1. Place the Base Plate on a flat surface. Insert a 5/16 x 3/4" Hex Head Bolt into the top right hole, then insert the bolt into the corresponding hole of the Tow Bar. Place a 5/16" Lock Washer onto the bolt and secure with a 5/16" Hex Head Nut. Next align the Centre Plate with the two remaining holes. Insert 5/16 x 3/4" Hex Head bolts through the holes in the Base Plate and the corresponding holes of the Tow Bar and Centre Plate. Place a 5/16" Lock Washer onto each bolt and secure with 5/16" Hex Head Nuts. Insert a 3/4" Axle Bushing into the Centre Plate. See Figure 1.

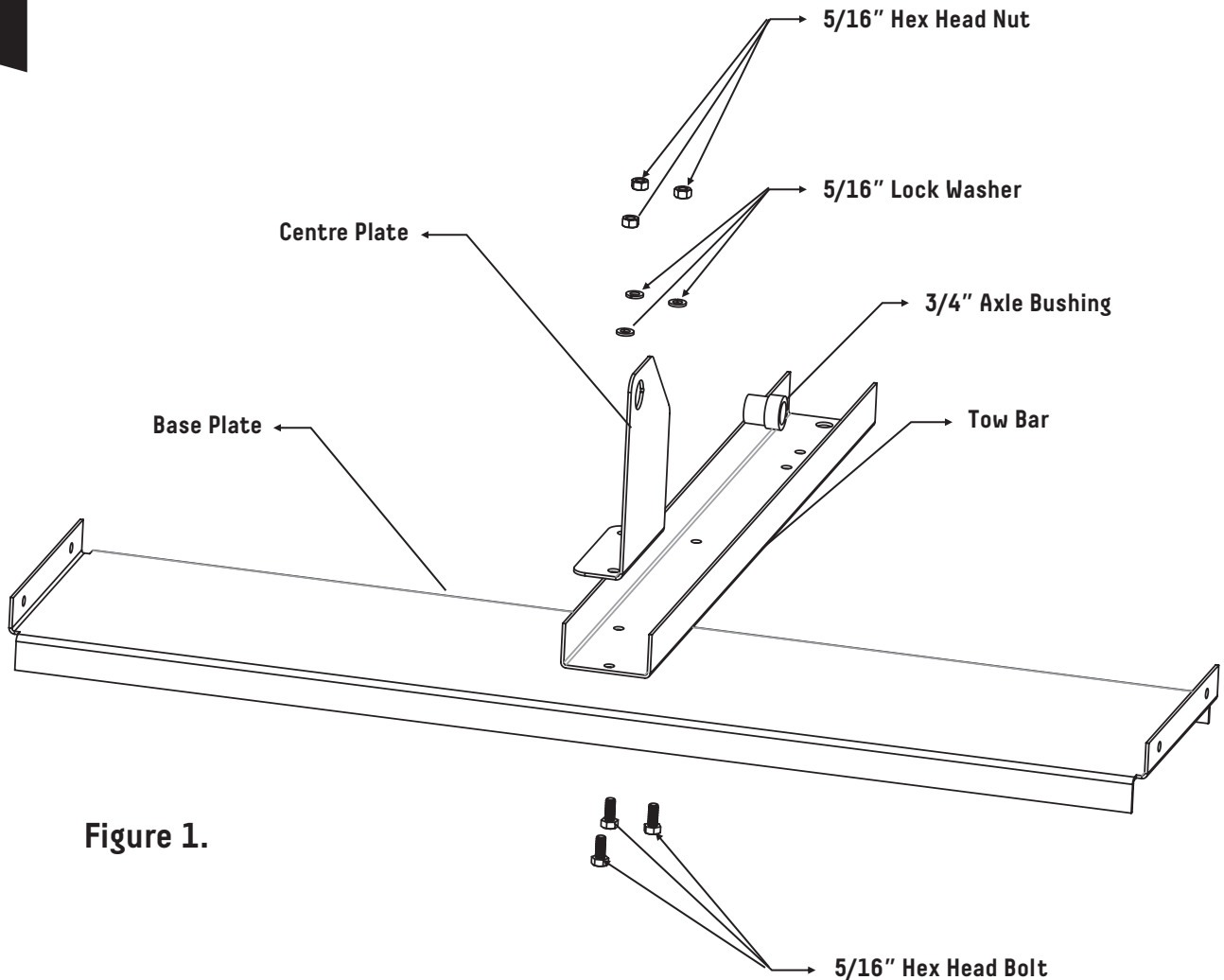


Figure 1.

2. Place the 1 x 2" Spacer onto the Long End of the Axle, followed by a 3/4" Flat Washer. Insert the Long End of the Axle into the 3/4" Axle Bushing of the Centre Plate. See Figure 2.

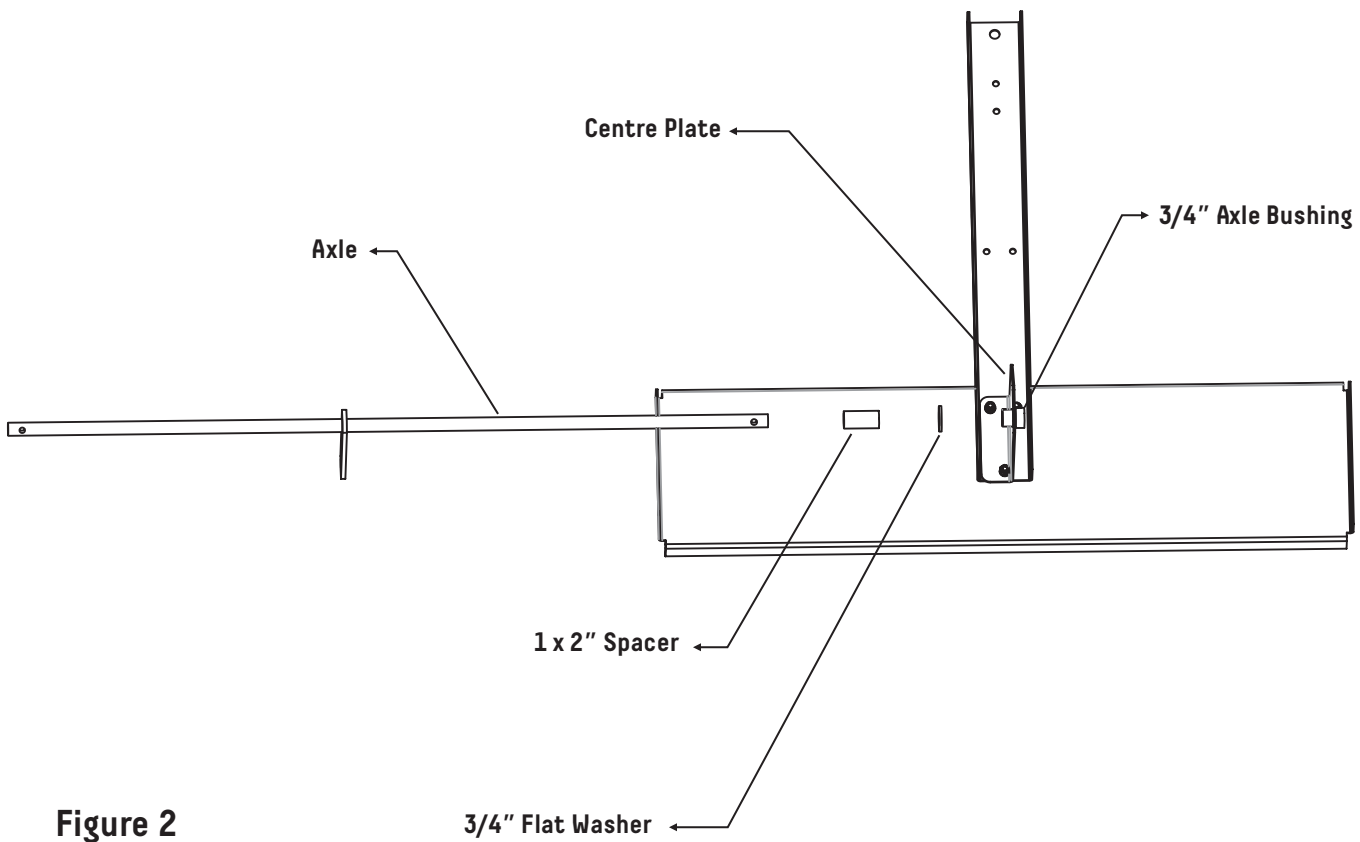


Figure 2

Assembly Instructions

Assembly Instructions

3. On the short side of the Axle, place two 3/4" Flat Washers onto the Axle, followed by an Axle Spring and then another 3/4" Flat Washer, followed by an Aerator Star and then another 3/4" Flat Washer. Place a 1 x 3" Spacer onto the Axle, a 3/4" Flat Washer, another Aerator Star and another 3/4" Flat Washer. Repeat this process three more times. Now place 2 1 x 3/4" Spacers onto the Axle followed by another 3/4" Flat Washer. See Figure 3.

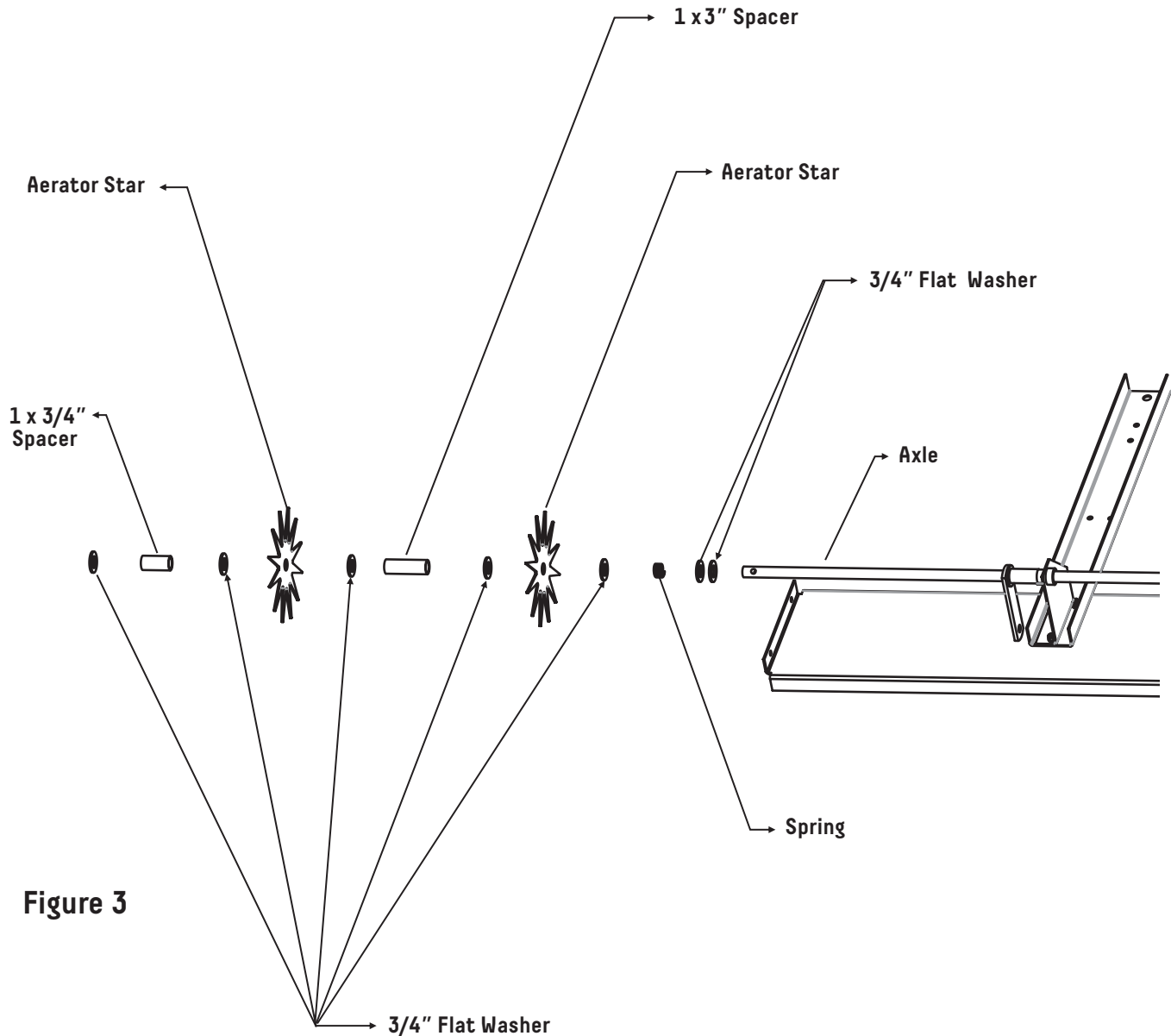


Figure 3

4. Insert a 3/4" Axle Bushing into the End Plate and place the Bushing and End Plate onto the Axle. Insert a 5/16 x 3/4" Hex Head Bolt into one of the end holes in the Base Plate. Then insert the bolt into the holes in the End Plate. Place a 5/16" Lock Washer onto the bolt, loosely attach a 5/16" Hex Head Nut onto the bolt at this time. Repeat this process on the other side. Now alternating back and forth between the two bolts, tighten the nuts. This will slowly increase the tension on the Axle Spring, until this side is tight and properly aligned. See Figure 4.

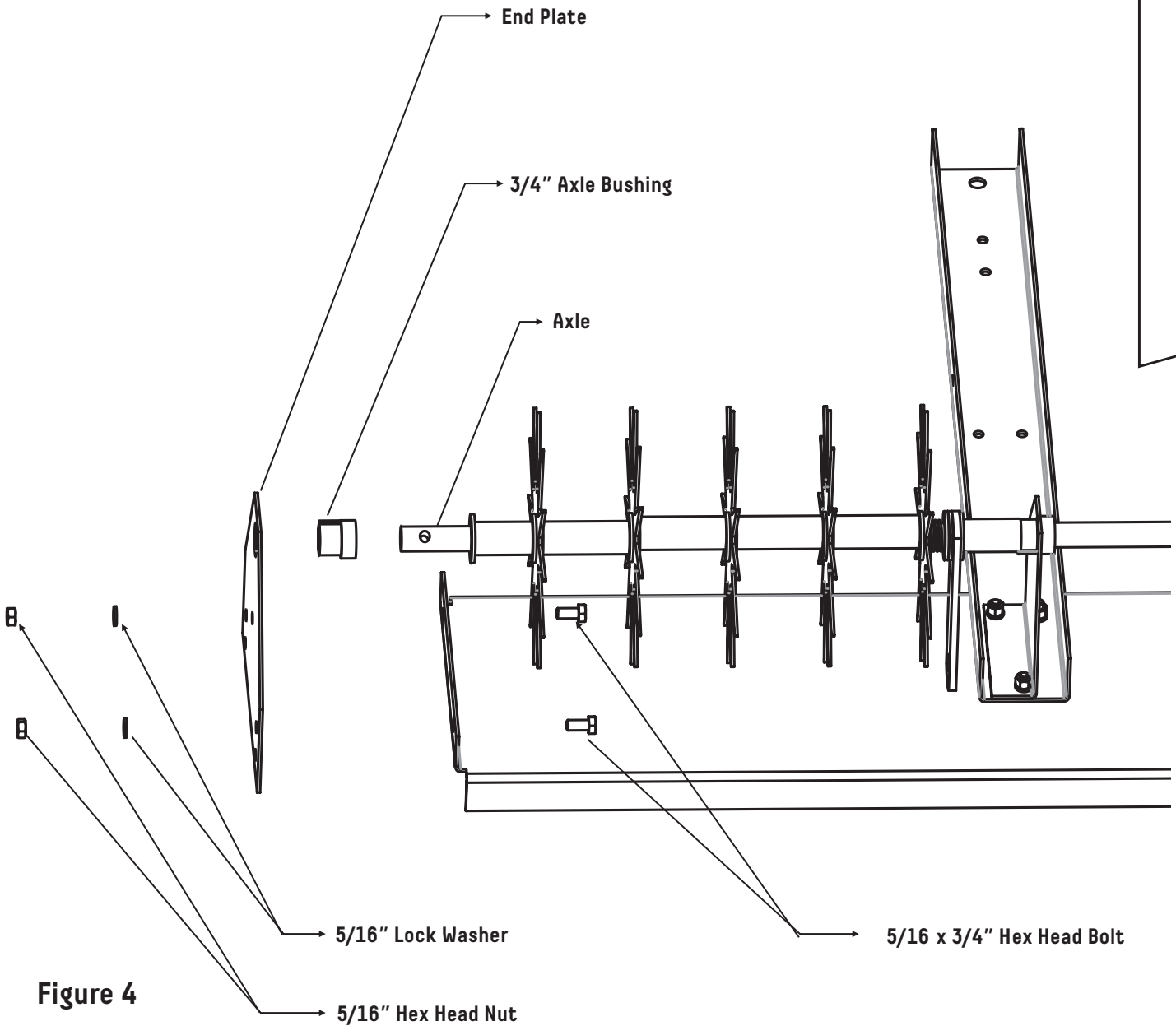
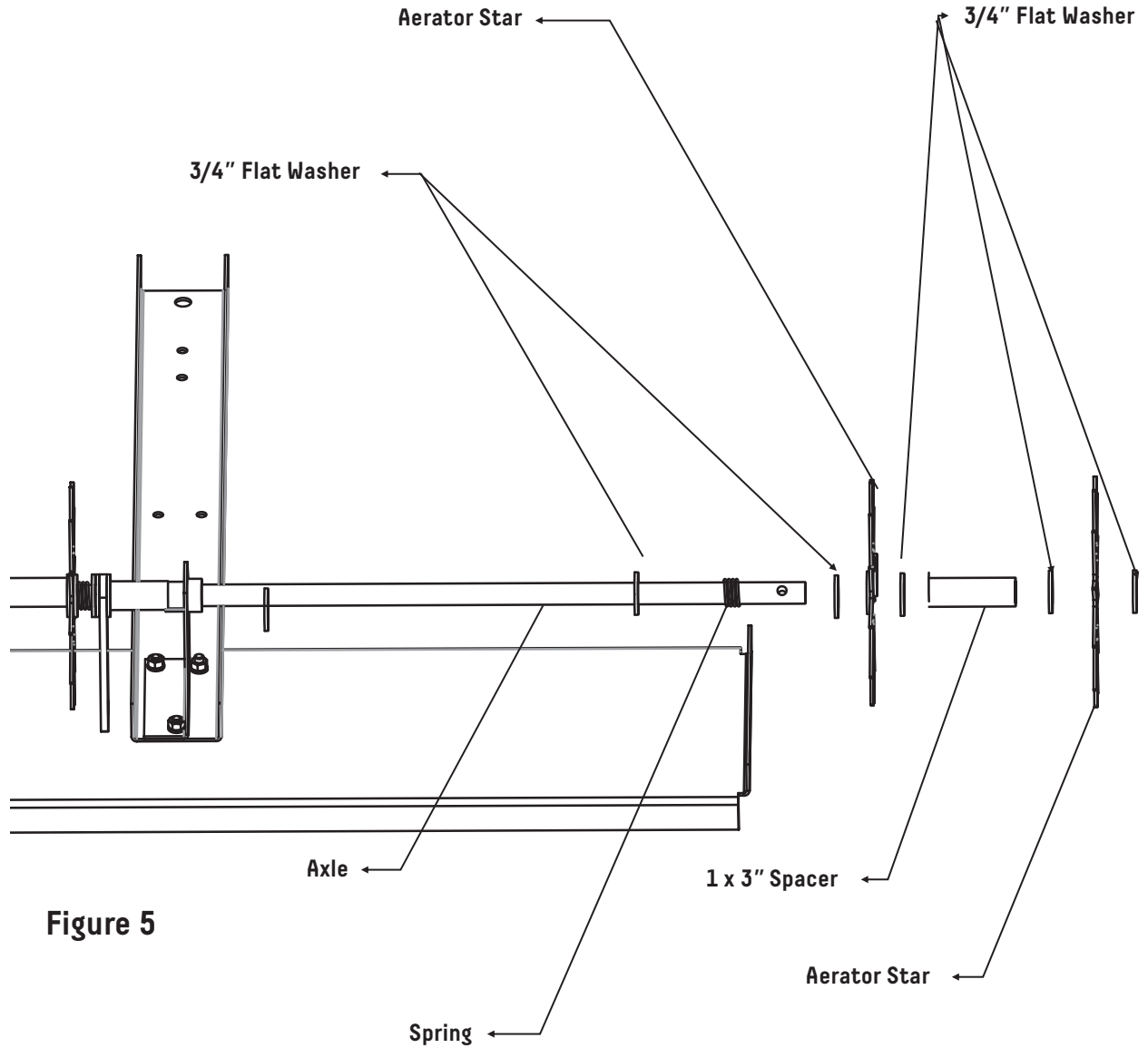


Figure 4

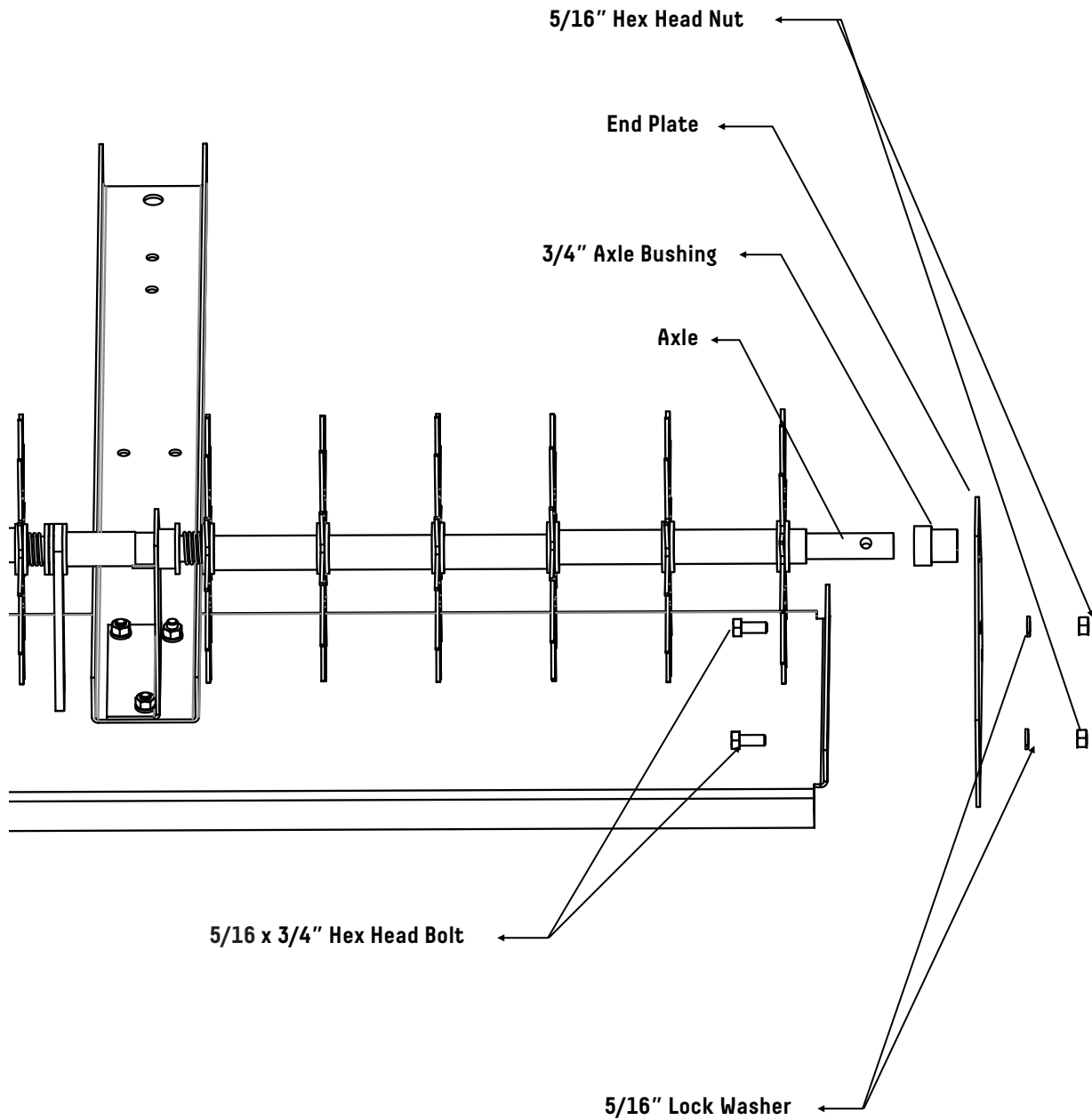
5. On the long side of the Axle place a 3/4" Flat Washer followed by an Axle Spring and then another 3/4" Flat Washer. Follow with a 3/4" Flat Washer, an Aerator Star, another 3/4" Flat Washer and a 1 x 3" Spacer. Repeat the process five more times. See Figure 5.

Assembly Instructions





6. Insert a 3/4" Axle Bushing into the End Plate and place the Bushing and End Plate onto the Axle. Insert a 5/16 x 3/4" Hex Head Bolt into one of the end holes in the Base Plate. Then insert the bolt into the holes in the End Plate, place a 5/16" Lock Washer onto the bolt, and loosely attach a 5/16" Hex Head Nut onto the bolt at this time. Repeat this process on the other side. Now alternating back and forth between the two bolts, tighten the nuts. This will slowly increase the tension on the Axle Spring, until this side is tight and properly aligned. See Figure 6.



Assembly Instructions

Figure 6

7. Align the hole of the Wheel Bracket with the hole in the Axle. Insert a 5/16 x 1 1/2" Hex Head Bolt into the hole in the Wheel Bracket and Axle. Secure with a 5/16" Nylock Nut. Repeat process on the other side. Place a 1/2" Flat Washer onto a 1/2 x 3" Hex Head Bolt, followed by a Wheel and then another 1/2" Flat Washer and secure with a 1/2" Jam Nut (do not over tighten or the Wheel will not turn). Insert this assembly into the hole in the Wheel Bracket, and secure with a 1/2" Nylock Nut. Repeat the process on the other side. See Figure 7.

Assembly Instructions

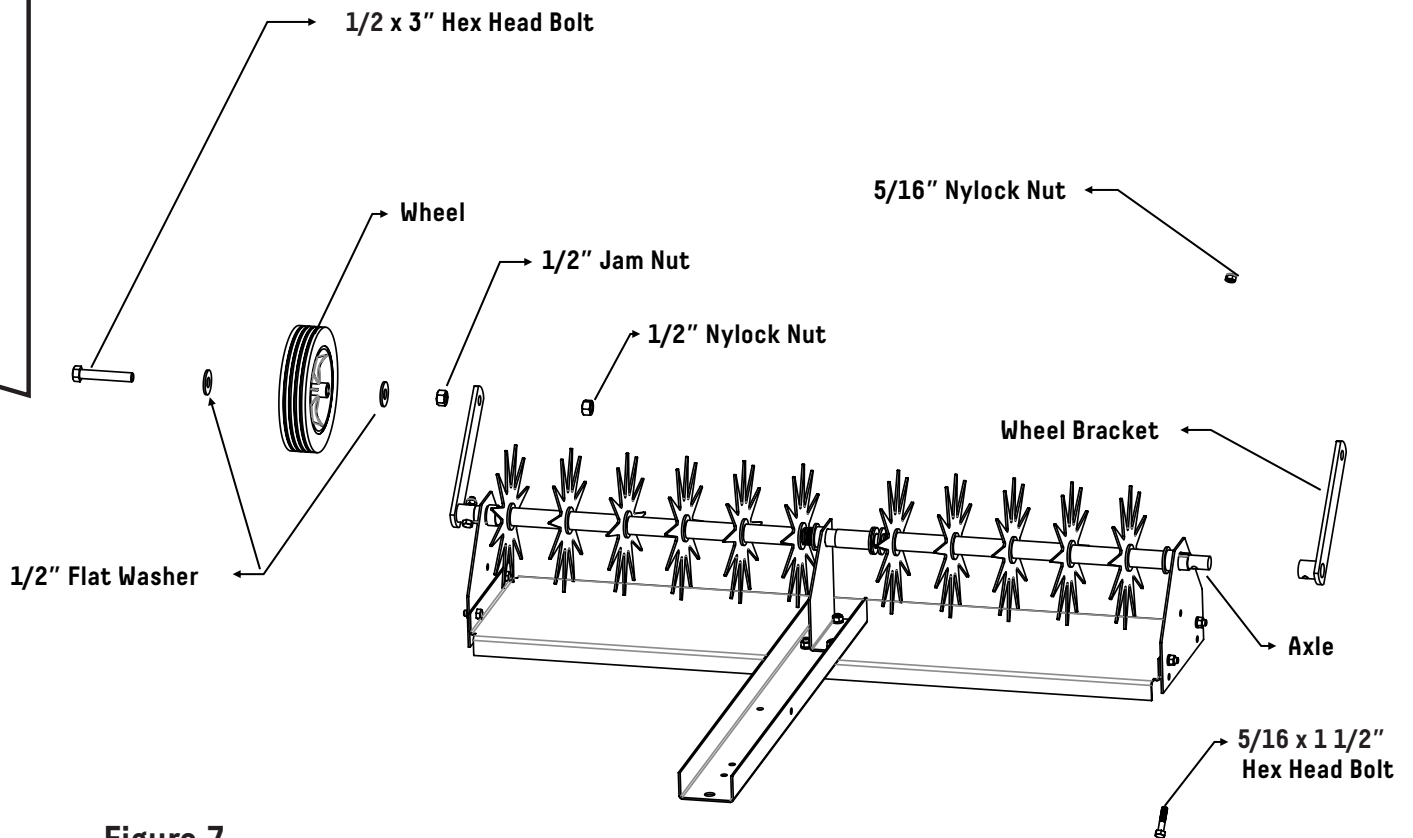


Figure 7

8. Align the two holes of the Tow Bar and Handle Brace as shown. Insert a 5/16 x 1" Hex Head Bolt into one of the holes in the Handle Brace and then through the corresponding hole in the Tow Bar. Place a 5/16" Flat Washer onto the bolt, and secure with a 5/16" Nylock Nut. Repeat process on the next hole. Insert a 5/16 x 3/4" Hex Head Bolt into one of the two smaller holes on the Clevis Plate and then into the corresponding hole in the Tow Bar. Place a 5/16" Lock Washer onto the bolt and secure with a 5/16" Hex Head Nut. Repeat process on the next hole. Insert the Clevis Pin through the larger front hole of the Clevis Plate and through the hole in the Tow Bar and secure with the Hitch Pin Clip. Screw the 5/16" Nylock Jam Nut onto the 5/16 x 1 1/4 Hex Head Bolt, leaving enough room for the Lever Link to fit between the head and the nut. Insert the bolt into the hole in the side of the Tow Bar and secure with a 5/16" Nylock Nut. See Figure 8.

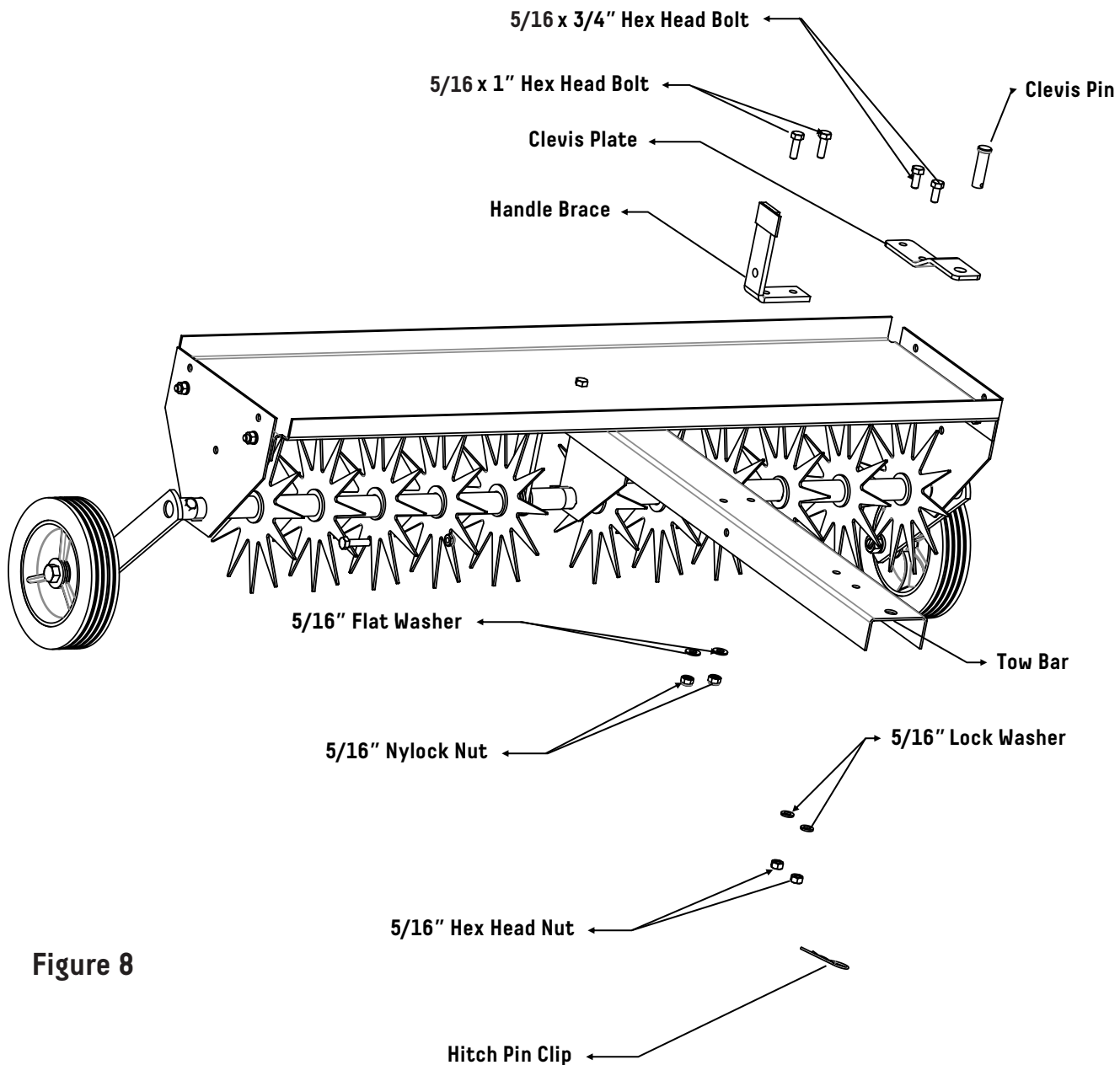


Figure 8

# Model Number 060-0197-8 Spike Aerator

## Assembly Instructions

7. Place a 1/2" Flat Washer onto the 1/2 x 1 3/4" Shoulder Bolt, followed by the Compression Spring. Insert it into the 1/2" hole in the centre of the Lever Link and into the Handle Brace, through a 3/8" Flat Washer and secure with a 3/8" Nylock Jam Nut. Place a 1/2" Nylon Washer onto the threaded stud on the bottom of the Leverage Bar, followed by the Linkage Bar, and secure with a 1/2" Nylock Nut (when nut is snug, back-off one half turn). Insert the 1/2 x 1 1/2" Hex Head Bolt into the other end of the Linkage Bar, followed by a 1/2" Nylon Washer, then into the hole in the Axle Link and secure with a 1/2" Nylock Nut. Place the Handle Grip onto the Handle. Put the 5/16" Nylock Jam Nut onto the 5/16 x 2 1/4" Hex Head Bolt leaving about 1/2" space between the Head of the bolt and the top of the nut. Insert the bolt into the second hole from the top on the Linkage Bar, then into the corresponding hole of the Handle and secure with a 5/16" Nylock Nut. Insert a 5/16 x 1 3/4" Hex Head Bolt into the top hole of the Linkage Bar, through the corresponding hole in the Handle and secure with a 5/16" Nylock Nut. See Figure 9.

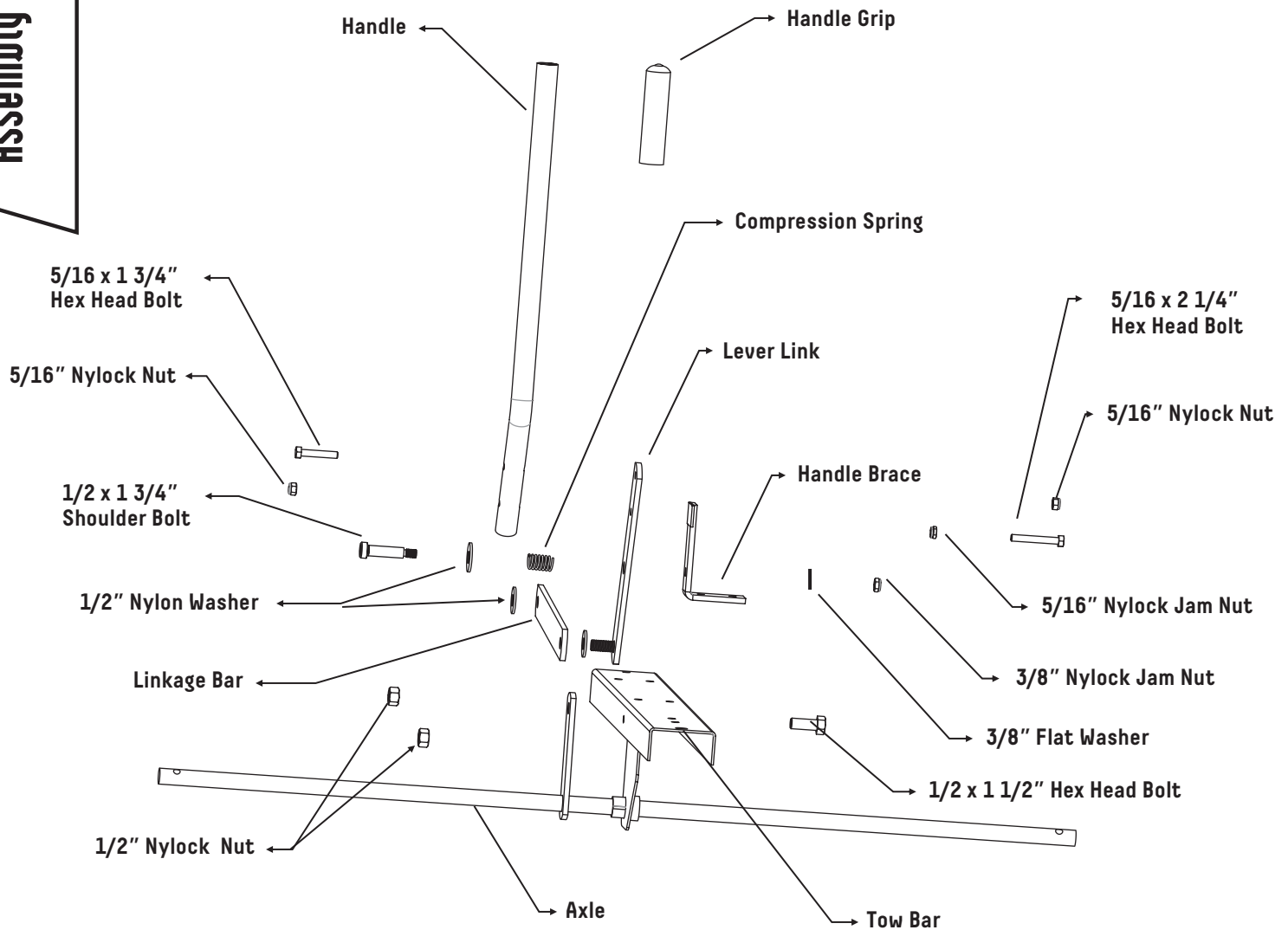
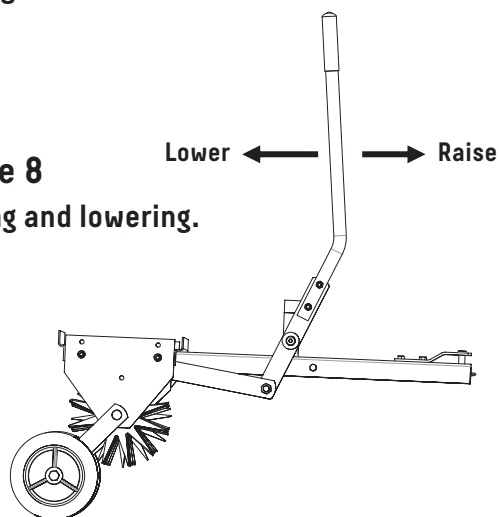


Figure 9

## Raising/Lowering your Spike Aerator

1. Attach the unit to your tractor on a level surface using the provided clevis pin and clevis pin clip.
2. Once you enter the grassy surface, lower the aerator for operation, move the handle to the side and push back to engage the spikes.
3. When complete, pull handle forward and lock to raise the unit and engage the wheels. See Figure 8.

**Figure 8**  
Raising and lowering.



## Using the Spike Aerator

Aerating involves cutting small holes into the soil to create small reservoirs allowing air, fertilizer, and water to reach the grass or plant's roots. The following lawn preparation and aerator operation is recommended for optimal performance.

Mow the lawn and remove grass clippings prior to using the plug aerator. Your plug aerator should be attached to your riding mower or tractor on a level surface such as a driveway or garage floor with wheels engaged.

Once you are on the grass, have the tractor in the lowest forward speed and then disengage the wheels by moving the handle out of the locked position, engaging the ground. Speed can be increased as conditions permit. On slopes, always operate in an up and down direction only. Overlapping passes can be done to increase the density of the spike point pattern.

DO NOT make sharp turns while the plug tines are engaged in the ground as this will damage the lawn. Weight can be placed on the top plate to increase the depth of plug tine's penetration. Weight may be needed for many applications, but DO NOT exceed the maximum weight of 100 lb (45 kg). The plate has been designed to hold concrete blocks. Secure the blocks with suitable binding material such as rubber tie down straps or wire. Not for use with Zero Turn Radius Mowers.

## Maintenance

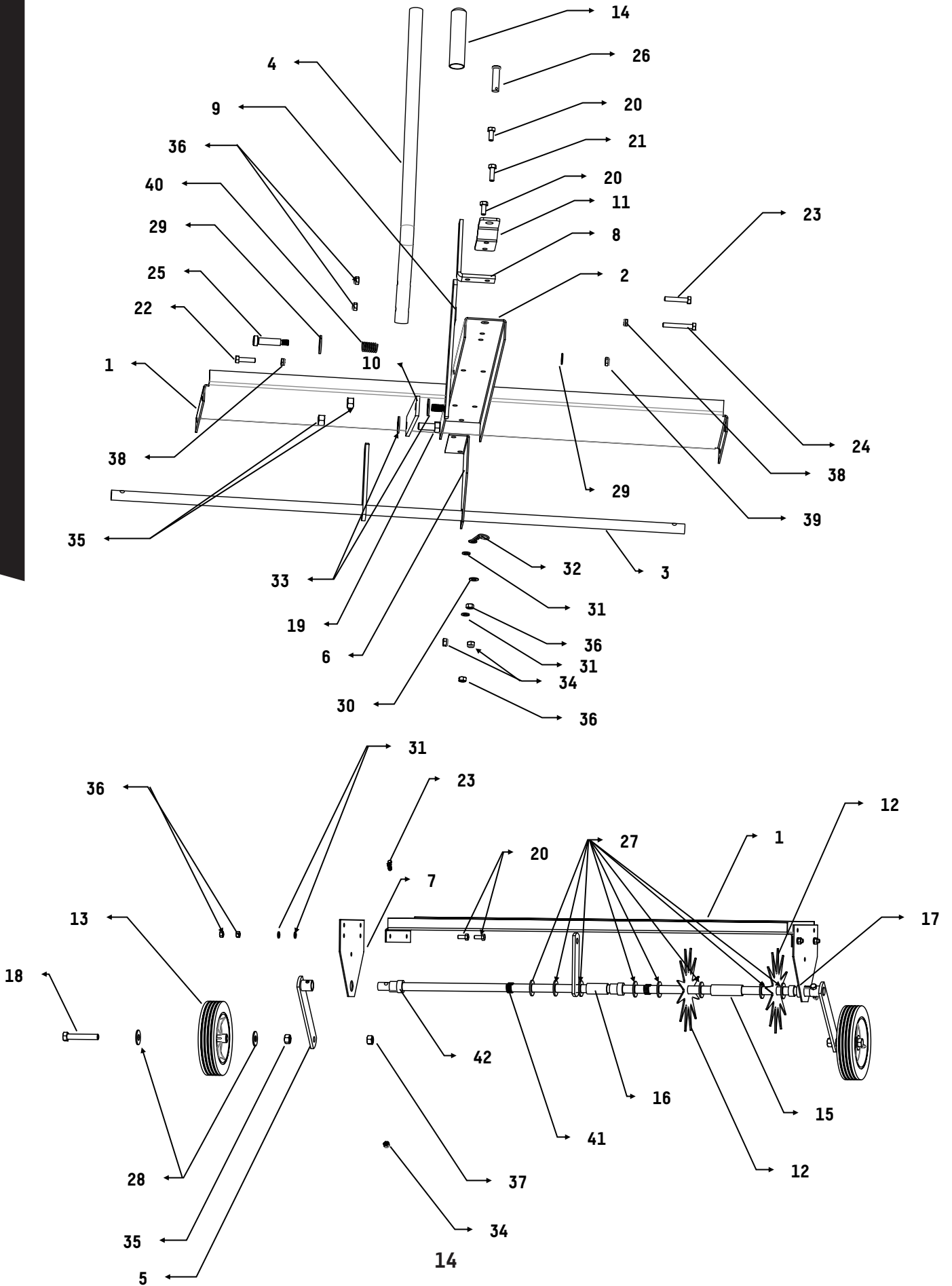
1. Before each use, check all nuts and bolts for tightness.
2. Clean after each use to prevent rust. The key to years of trouble-free service is to keep your unit clean and dry.
3. If rust should develop, sand lightly and then paint area with enamel.
4. Periodically check all moving parts for free movement and if necessary, lubricate with oil.
5. Your plug tines can be removed for sharpening.
6. Sharpening plug tines will allow you to maintain good soil penetration.

## Storage

1. Be careful to store your spike aerator with the spikes towards the floor or a wall. Plug tines are sharp and can cause considerable damage.
2. Always store your spike aerator in a dry area, and coat exposed metal with light oil when not in use.

# Model Number 060-0197-8 Spike Aerator

## Parts List and Support



## Not All Parts Shown

Ref No.	Part No.	Qty.	Description
1	4020P	1	Base Plate
2	5872TB	1	Tow Bar
3	5870	1	Axle
4	5865TB	1	Handle
5	5568TB	2	Wheel Bracket
6	5869TB	1	Centre Plate
7	4019P	2	End Plates
8	5866TB	1	Handle Brace
9	4263B	1	Lever Link
10	4240B	1	Linkage Bar
11	1243P	1	Clevis Plate
12	4025P	11	Aerator Blade
13	3150CR	2	Wheel
14	3042	1	Handle Grip
15	4470	9	1 x 3" Spacer
16	4029TB	1	1 x 2" Spacer
17	4271	2	1/2 x 3" Hex Head Bolt
18	5583	1	1/2 x 1 1/2" Hex Head Bolt
19	1248	9	5/16 x 3/4" Hex Head Bolt
20	3738	2	5/16 x 1" Hex Head Bolt
21	4281	1	5/16 x 1 1/4" Hex Head Bolt
22	4014	2	5/16 x 1 1/2" Hex Head Bolt
23	2051	1	5/16 x 1 3/4" Hex Head Bolt
24	1752	1	5/16 x 2 1/4" Hex Head Bolt
25	4011	1	1/2 x 1 3/4" Shoulder Bolt
26	1840	1	1/2 x 1 3/4" Clevis Pin
27	1264	26	3/4" Flat Washer
28	1506	5	1/2" Flat Washer
29	1278	1	3/8" Flat Washer
30	1044	2	5/16" Flat Washer
31	1276	9	5/16" Lock Washer
32	1042	1	#14 Hitch Pin Clip
33	5589	2	1/2" Nylon Washer
34	1749	7	5/16" Nylock Nut
35	4327	4	1/2" Nylock
36	1275	9	5/16" Hex Head Nut
37	4324	2	1/2" Jam Nut
38	5591	2	5/16" Nylock Jam Nut (thin)
39	5590	1	3/8" Nylock Jam Nut (thin)
40	4272	1	Compression Spring
41	4024	2	Spring (Axle)
42	4051	3	Bushing 3/4" (Axle)
43	4296	2	1 x 3/4" Spacer

## Parts and Support



Please do not return this product to the store prior to contacting Certified™.

At Certified™ our goal is to deliver quality, value and outstanding service. If for any reason our product does not meet your expectations, please contact us and we will take care of any problem you may have with this unit.

When ordering replacement parts please have the model number, part description, part number, inspector number and date on carton available so that we can best serve you.

**1 (844) 428-7277**

**MADE IN U.S.A**

**TRILEAF DISTRIBUTION  
TRIFEUIL TORONTO,  
CANADA M4S 2B8**

The limited warranty set forth below is given by Certified. with respect to new merchandise purchased and used in Canada, its possessions and territories.

Certified warrants the product(s) listed against defects in material and workmanship, and will at our option, repair or replace, free of charge, any part found to be defective in materials or workmanship. This limited warranty shall only apply if this product has been assembled, operated, and maintained in accordance with the owner's manual furnished with the product, and has not been subject to misuse, abuse, neglect, accident, improper maintenance, alteration, vandalism, theft, fire, water, or damage because of other peril or natural disaster.

Normal wear parts or components there of are subject to separate terms as follows: All normal wear parts or component failures will be covered on the product for a period of one year. Parts found to be defective within the warranty period will be replaced at our expense. Our obligation under this warranty is expressly limited to the replacement or repair, at our option, of parts found to be defective in material and workmanship.

**Contacting Service:**

Warranty parts replacements are available, only with **Proof of Purchase**, through our Customer Service Department. Call 1 (844) 428-7277.

This limited warranty does not provide coverage in the following cases:

1. Routine maintenance items such as lubricants and filters.
2. Normal deterioration of the exterior finish due to use or exposure.
3. Transportation and/or labour charges.

No implied warranty, including any implied warranty of merchantability or fitness for a particular purpose, applies after the applicable period of express written warranty above as to the part as identified below.

No other express warranty whether written or oral, except as mentioned above, given by any person or entity, including a dealer or retailer, with respect to any product, shall bind Certified during the period of the warranty, the exclusive remedy is repair or replacement of the product as set forth above.

The provisions as set forth in this warranty provide the sole and exclusive remedy arising from the purchase.

Certified will not be liable for incidental or consequential loss or damage including, without limitation, expenses incurred for substitute or replacement lawn care services or for rental expenses to temporarily replace a warranted product.

Some provinces and territories do not allow the exclusion or limitation of incidental or consequential damages, or limitations on how long an implied warranty lasts, so the above exclusions or limitations may not apply to you.

During the warranty period, the exclusive remedy is replacement of the part. In no event shall recovery of any kind be greater than the amount of the purchase price of the product sold. Alteration of safety features of the product shall void this warranty. You assume the risk and liability for loss, damage, or injury to you and your property and/or to others and their property arising out of the misuse or inability to use this product.

This limited warranty shall not extend to anyone other than the original purchaser or to the person for whom it was purchased as a gift.

**Local Law to this Warranty:**

This limited warranty gives you specific legal rights, and you may also have other rights which vary from provinces and territories.

**Warranty Period:**

The warranty period stated below begins with the **Proof of Purchase**. Without the proof of purchase, the warranty period begins from the date of manufacture.

**Product Warranty Period:**

The warranty period for this unit is as follows:  
All part are cover one year from date of sale.