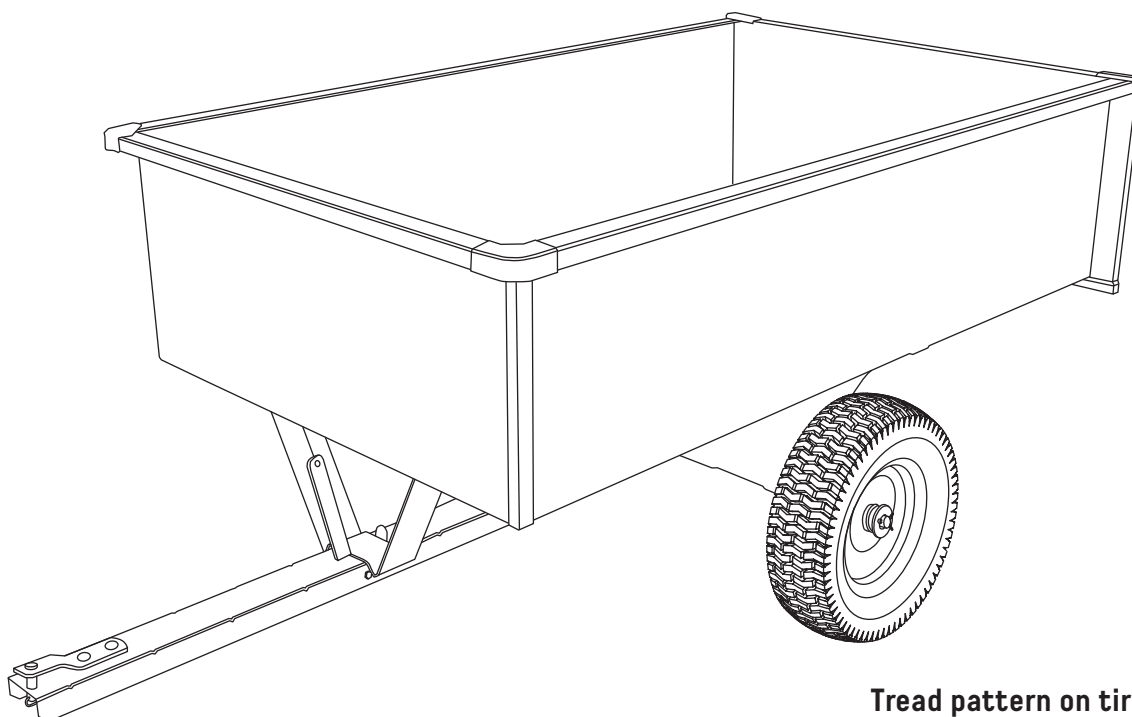




Owner's Manual Model Number 060-0195-2 Trailer Dump Cart



Tread pattern on tire may vary



Caution: Carefully read all rules and instructions for safe operation. Retain this manual for reference.

Manual Contents

Safety Instructions	2
Carton Contents	2
Assembly	4
Operation and Maintenance	5
Parts and Support	5
Parts List	6
Warranty	7

Your New Trailer Dump Cart

Congratulations on your purchase of a new Certified™ Trailer Dump Cart. Your Trailer Dump Cart has been engineered and built to give you the most dependable and best performing product possible.

Keep your manual in a safe, convenient place for future reference. Always mention the model and part number in any correspondence when ordering parts.

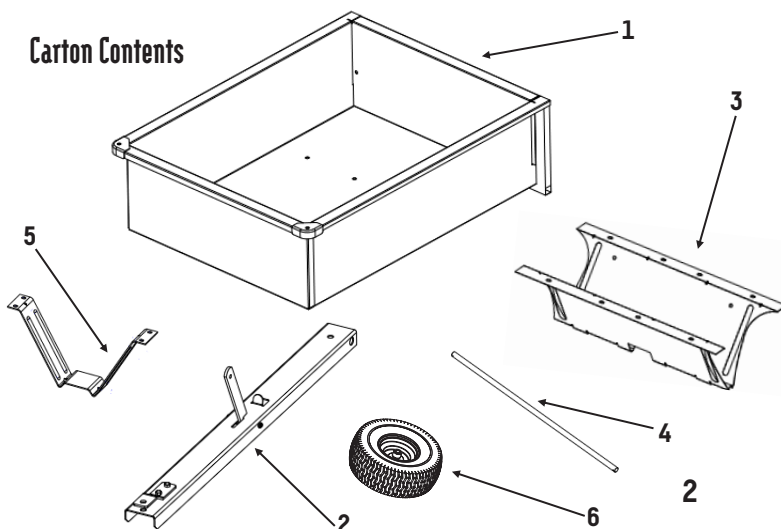
If you experience any problem you can not easily resolve, please feel free to contact our knowledgeable and helpful customer service department toll-free at 1 (844) 428-7277.



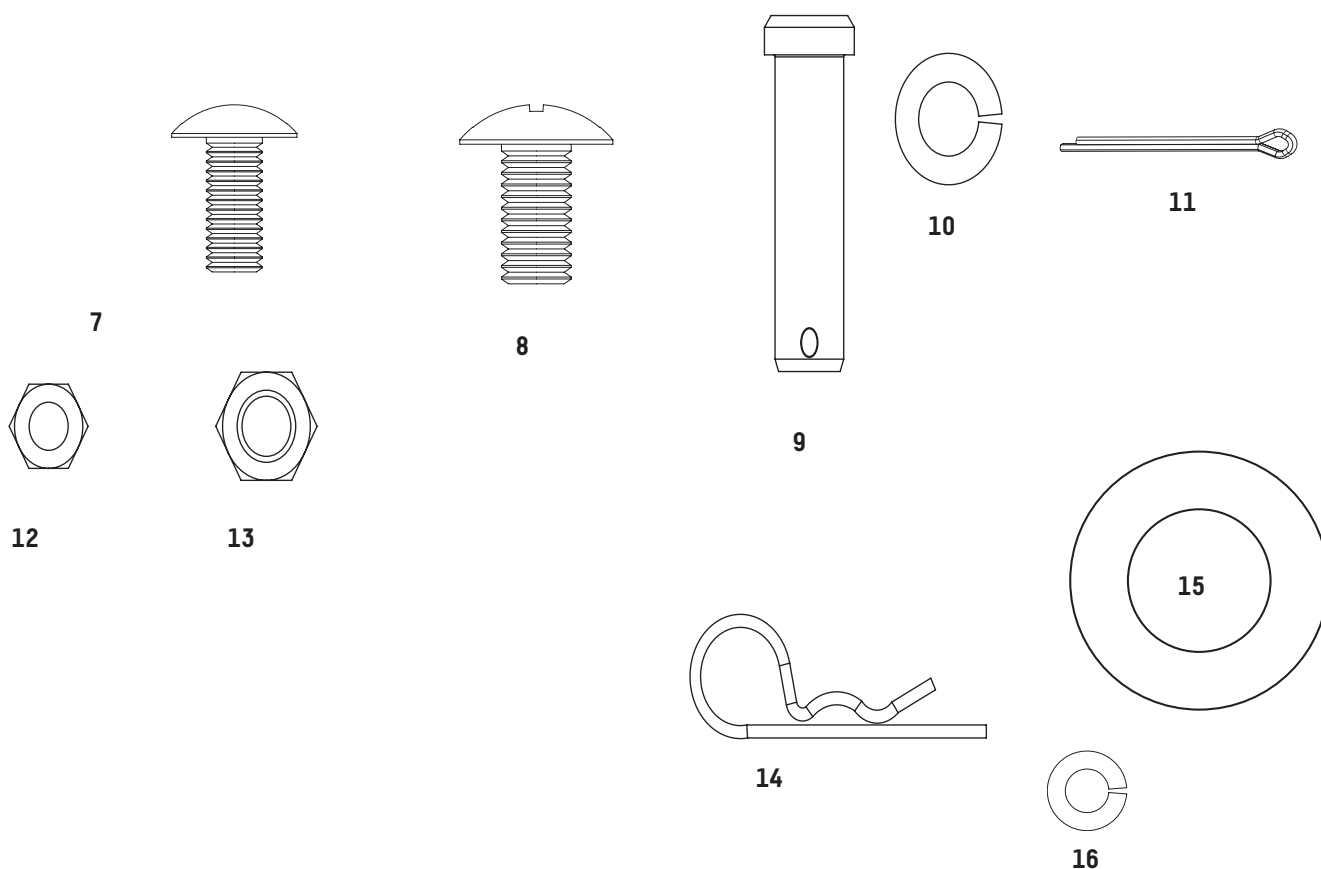
The following safety precautions are suggested. This Trailer Dump Cart is designed, engineered and tested to offer reasonably safe and effective service, provided that it is operated in strict accordance with these instructions. Failure to do so may result in personal injury. Always observe the rules of safe operation. Please read and retain this manual.

- Read and understand your tractor's owner's manual and towing safety rules, and know how to operate your tractor before using any attachment.
- Do not allow anyone to ride or sit on tow-behind equipment during operation.
- Be alert for holes in the terrain and other hazards. This could cause you to lose control of the cart and lawn tractor.
- Follow maintenance and lubrication instructions as outlined in this manual.
- Tractor braking and stability may be affected with the attachment of this unit. Be aware of changing conditions on slopes. Refer to safety rules in your tractor owner's manual concerning safe operation on slopes. **Stay Off Steep Slopes.**
- Always operate up and down a slope, never across the face of a slope.
- Do not drive close to creeks, ditches or public highways.
- Always wear substantial footwear. Do not wear loose fitting clothing that may get caught in moving parts.
- Always operate up and down a slope, never across the face of a slope.
- Avoid extremely sharp turns.
- Follow the maintenance instructions as outlined in this owner's manual.
- Do not exceed maximum towing speed of 3-4 MPH (5-6.4 km/h).
- Maximum Carrying Capacity: 1200 lb (544 kg).
- **Warning of danger of improper use of the dump cart.** This unit is intended for use only with riding mowers or garden tractors. It is definitely not for highway use, being pulled at high speeds, or transporting passenger(s) of any sort. Such use could result in injuries for which we cannot be held responsible.

Carton Contents



Ref No.	Qty.	Description
1	1	Body W/Tailgate
2	1	Tow Bar Assembly
3	1	Undercarriage
4	1	Axle
5	1	Pedestal
6	2	Wheels



Carton Contents

Hardware sack may contain more parts than needed.

Ref No.	Qty.	Description
7	4	5/16 x 3/4" Truss Head Bolt
8	12	3/8 x 3/4" Truss Head Bolt
9	1	1/2 x 1 3/4" Clevis Pin
10	12	3/8" Lock Washer
11	2	1/8 x 1 1/4" Cotter Pin
12	4	5/16" Hex Head Nut
13	12	3/8" Hex Head Nut
14	1	#14 Hitch Pin Clip
15	4	3/4" Flat Washer
16	4	5/16" Lock Washer

Tools Needed For Cart Assembly

- (2) 7/16" Wrenches
- (2) 1/2" Wrenches
- (1) 9/16" Wrench
- (1) Pair Pliers
- (1) Large Standard or Flat Screwdriver

Remove from Carton

Remove all parts and hardware packages from the carton. Lay out all parts and hardware and identify them using the illustrations on pages 2-3.

Assembly Tip:

Loosely tighten all nuts and bolts at first. Fully tighten when the unit is completely assembled.

1. Attach Undercarriage Axle Support to the bottom of the Body. Use 12 3/8 x 3/4" Truss Head Bolts, 3/8" Lock Washers, and secure with 3/8" Hex Head Nuts. See Figure 1.

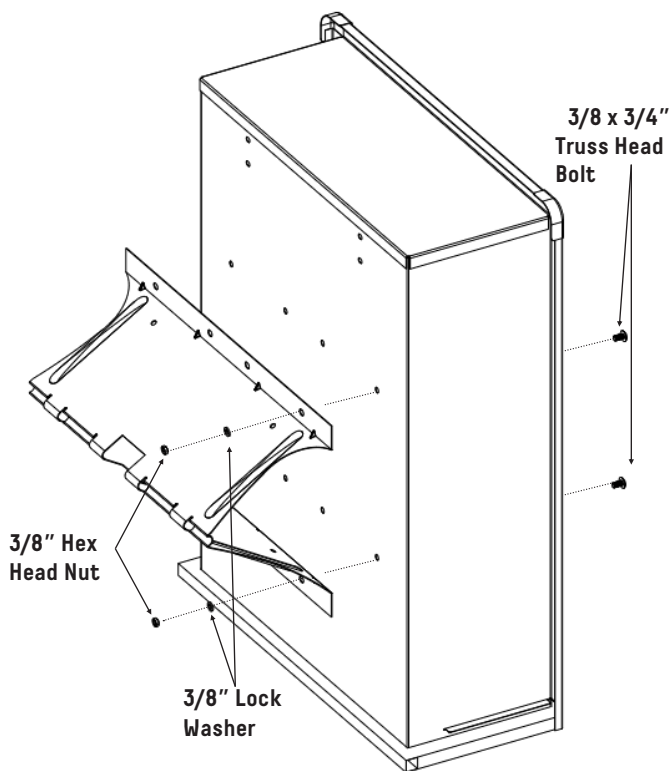


Figure 1.

2. Attach Pedestal to bottom front of Body. Use 5/16 x 3/4" Truss Head Bolts from inside. On the bottom side, use 5/16" Lock Washers and secure with 5/16" Hex Head Nuts. See Figure 2.

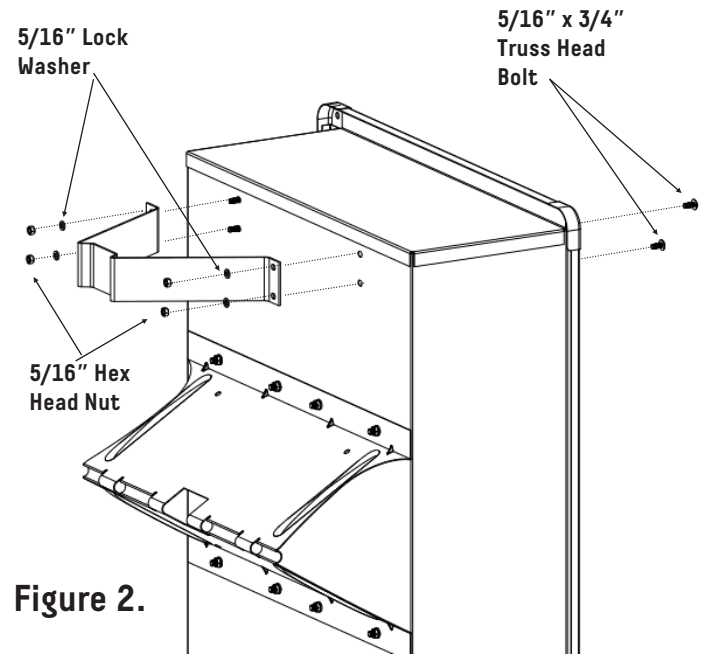


Figure 2.

3. Move Body to flat position with Undercarriage and Pedestal face up. Slide Axle halfway through Undercarriage. Place Tow Bar into centre slot on Undercarriage, locking latch to Pedestal, then slide the Axle through the holes in the Tow Bar all the way through the Undercarriage. See Figure 3.

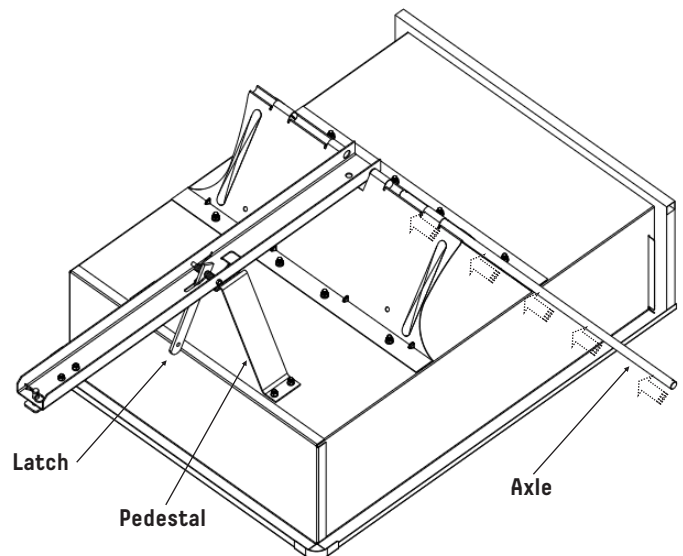


Figure 3.

4. Place one 3/4" Flat Washer on each side of Axle next to Undercarriage. Next place Wheel onto Axle, add one 3/4" Flat Washer on outside of wheel. Secure Wheel in place by inserting Cotter Pin through hole in the end of Axle and spreading the legs of the Cotter Pin outward. Repeat the Wheel attachment step for the other wheel. See Figure 4.

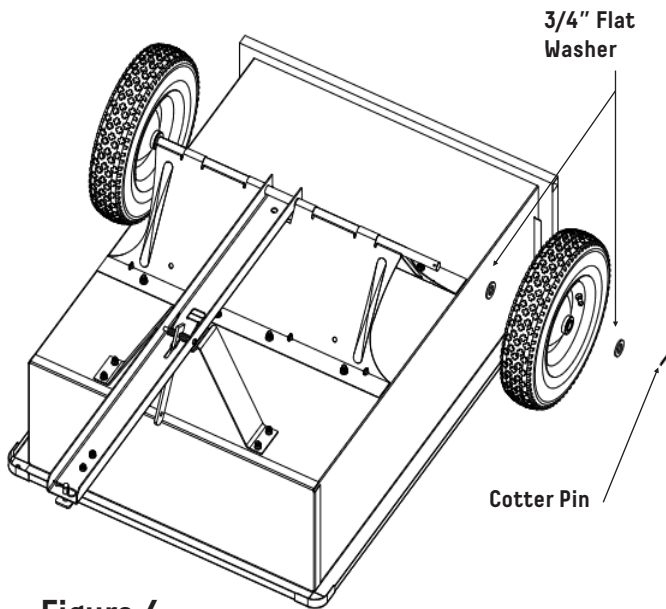


Figure 4

5. Turn Cart to an upright position, then attach Tow Bar to Hitch of tractor by placing Clevis Pin through Clevis Plate Hole and securing with Clevis Pin Clip. Insert 1 x 1" Tube Plug into Tailgate Support Tube. See Figure 5.

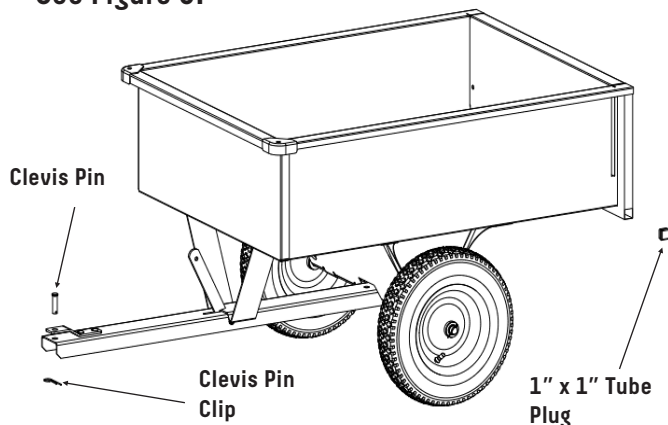


Figure 5

Operation

- **TO DUMP**—Pull Latch toward lawn tractor and Cart Body will tilt back to dump position.
- **TO RETURN TO PULLING POSITION**—Push down on front edge of Cart Body until Latch engages and secures to Tow Bar.
- Tractor speed should be governed by weight of load. The heavier the load, the slower the speed for safe operation.

Maintenance Instructions

- Keeping the cart clean and dry will prolong the unit's life.
- Grease Wheels at regular intervals, at least once every six months. More frequently if used regularly.
- Should rust develop, sand lightly then paint area with enamel paint.
- Check tire pressure at regular intervals. Proper inflation will prolong the life of tires (see side of tire for inflation amount.)

Parts and Support

STOP Please do not return this product to the store prior to contacting Certified™.

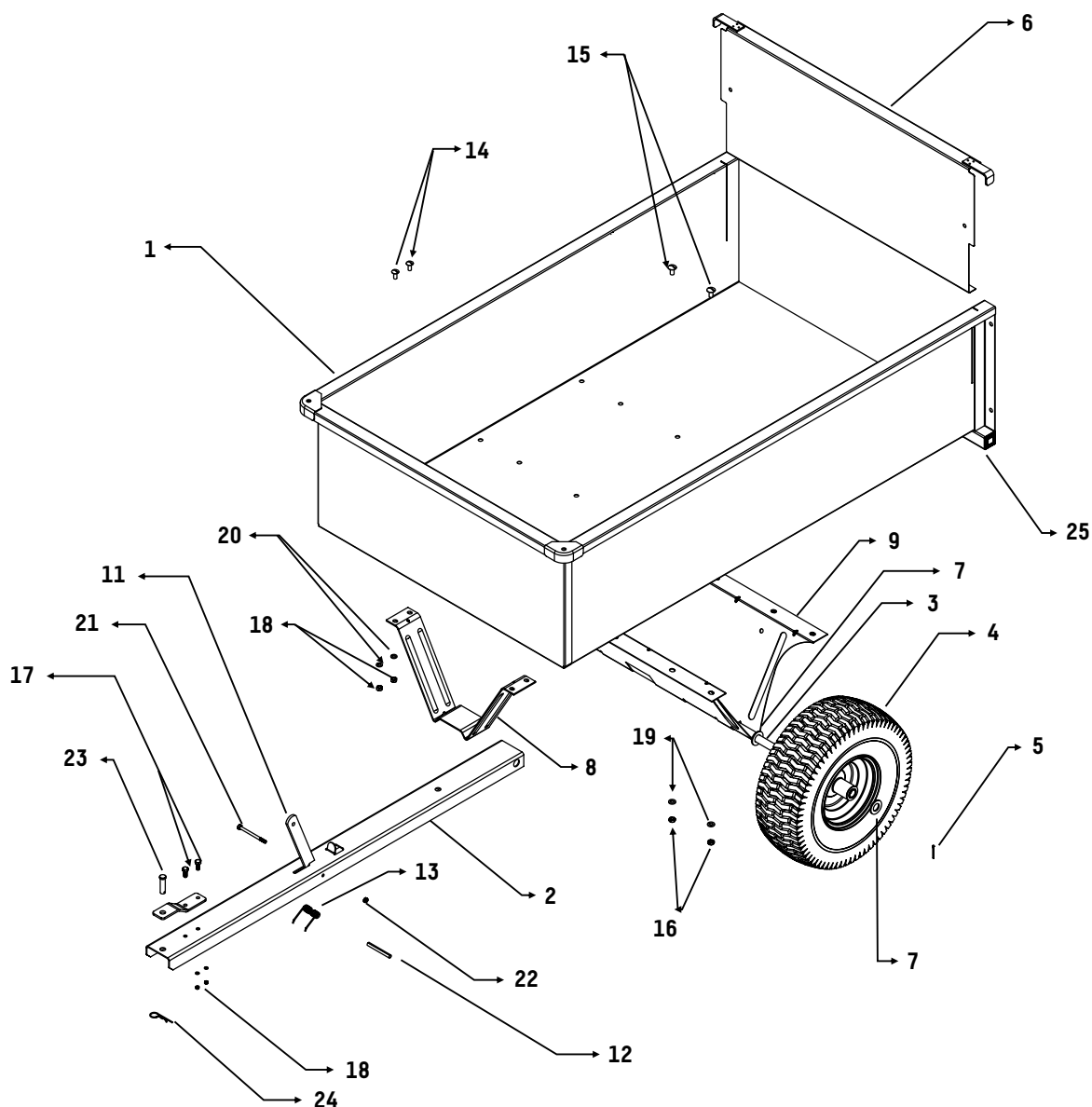
At Certified™ our goal is to deliver quality, value and outstanding service. If for any reason our product does not meet your expectations, please contact us and we will take care of any problem you may have with this unit.

When ordering replacement parts please have the model number, part description, part number, inspector number and date on carton available so that we can best serve you. **1 (844) 428-7277**

MADE IN U.S.A
TRILEAF DISTRIBUTION
TRIFEUIL TORONTO,
CANADA M4S 2B8

Model Number 060-0195-2 Dump Cart

Parts List



Ref No.	Part No.	Qty.	Description	Ref No.	PartNo.	Qty.	Description
1	5632B	1	Body	15	4552	12	3/8 x 3/4" Truss Head Bolt
2	5622B	1	Tow Bar	16	1273	12	3/8" Hex Head Nut
3	5629	1	Axle	17	1248	2	5/16 x 3/4" Hex Head Bolt
4	5547A	2	Wheel	18	1275	6	5/16" Hex Head Nut
5	1262	2	Cotter Pin	19	1274	12	3/8" Lock Washer
6	5631B	1	Tailgate	20	1276	6	5/16" Lock Washer
7	1264	4	3/4" Flat Washer	21	4466	1	1/4 x 3 1/2" Hex Head Bolt
8	4630B	1	Pedestal	22	1778	1	1/4" NyLock Nut
9	5630B	1	Undercarriage	23	1840	1	1/2 x 1 3/4" Clevis Pin
10	1243P	1	Clevis Plate	24	1042	1	#14 Clevis Pin Clip
11	1265P	1	Latch	25	2176	2	1 x 1" Tube Plug
12	1242	1	1/4 x 3" Spacer	26	4471	2	1 x 1 1/4" Spacer* (not shown)
13	4497	1	Spring				
14	1586	4	5/16 x 3/4" Truss Head Bolt				

The limited warranty set forth below is given by Certified. with respect to new merchandise purchased and used in Canada, its possessions and territories.

Certified warrants the product(s) listed against defects in material and workmanship, and will at our option, repair or replace, free of charge, any part found to be defective in materials or workmanship. This limited warranty shall only apply if this product has been assembled, operated, and maintained in accordance with the owner's manual furnished with the product, and has not been subject to misuse, abuse, neglect, accident, improper maintenance, alteration, vandalism, theft, fire, water, or damage because of other peril or natural disaster.

Normal wear parts or components there of are subject to separate terms as follows: All normal wear parts or component failures will be covered on the product for a period of one year. Parts found to be defective within the warranty period will be replaced at our expense. Our obligation under this warranty is expressly limited to the replacement or repair, at our option, of parts found to be defective in material and workmanship.

Contacting Service:

Warranty parts replacements are available, only with **Proof of Purchase**, through our Customer Service Department. Call 1 (844) 428-7277.

This limited warranty does not provide coverage in the following cases:

1. Routine maintenance items such as lubricants and filters.
2. Normal deterioration of the exterior finish due to use or exposure.
3. Transportation and/or labour charges.

No implied warranty, including any implied warranty of merchantability of fitness for a particular purpose, applies after the applicable period of express written warranty above as to the part as identified below.

No other express warranty whether written or oral, except as mentioned above, given by any person or entity, including a dealer or retailer, with respect to any product, shall bind Certified during the period of the warranty, the exclusive remedy is repair or replacement of the product as set forth above.

The provisions as set forth in this warranty provide the sole and exclusive remedy arising from the purchase.

Certified will not be liable for incidental or consequential loss or damage including, without limitation, expenses incurred for substitute or replacement lawn care services or for rental expenses to temporarily replace a warranted product.

Some provinces and territories do not allow the exclusion or limitation of incidental or consequential damages, or limitations on how long an implied warranty lasts, so the above exclusions or limitations may not apply to you.

During the warranty period, the exclusive remedy is replacement of the part. In no event shall recovery of any kind be greater than the amount of the purchase price of the product sold. Alteration of safety features of the product shall void this warranty. You assume the risk and liability for loss, damage, or injury to you and your property and/or to others and their property arising out of the misuse or inability to use this product.

This limited warranty shall not extend to anyone other than the original purchaser or to the person for whom it was purchased as a gift.

Local Law to this Warranty:

This limited warranty gives you specific legal rights, and you may also have other rights which vary from provinces and territories.

Warranty Period:

The warranty period stated below begins with the **Proof of Purchase**. Without the proof of purchase, the warranty period begins from the date of manufacture.

Dump Cart Warranty Period:

The warranty period for this unit is as follows:
All part are cover one year from date of sale.

CERTIFIED TM/MC