

These precautions are intended for the personal safety of the user and others working with the user. Please take time to read and understand them. Note: Carefully read and understand all the instructions in this manual before using the device. Written approval must be obtained from manufacturer if this device is to be used for life support systems or other non-industrial applications.

TECHNICAL SPECIFICATIONS

REGULATOR TYPE	Self relieving
MAXIMUM TEMPERATURE	150 °F (65.5 °C)
OPERATING TEMPERATURE	41 °F (5 °C)
MAXIMUM PRESSURE	150 psi
WORKING PRESSURE	10–125 psi
AIR INLET/OUTLET	3/8" (9.52 mm) NPT
GAUGE PORTS	1/8" (3.17 mm) NPT
AVERAGE AIR FLOW	34 SCFM @ 90 psi
MAXIMUM AIR FLOW	86 SCFM @ 90 psi
WORKING MEDIUM	Air

SCFM: Standard Cubic Feet per Minute (the volumetric flow rate of air corrected to standardized conditions of temperature and pressure).

NPT: National Pipe Thread.

SAFETY GUIDELINES

This manual contains information that relates to PROTECTING PERSONAL SAFETY and PREVENTING EQUIPMENT PROBLEMS. It is very important to read this manual carefully and understand it thoroughly before using the product. The symbols listed below are used to indicate this information.

⚠ DANGER!

Potential hazard that will result in serious injury or loss of life.

⚠ WARNING!

Potential hazard that could result in serious injury or loss of life.

⚠ CAUTION!

Potential hazard that may result in minor or moderate injury.

⚠ NOTICE!

Potential hazard that may result in damage to equipment.

Note - The word "Note" is used to inform the reader of something handler needs to know about the tool.

⚠ DANGER!

Potential hazard that will result in serious injury or loss of life.

- Keep children away from the work area. Do not allow children to handle the device.
- Do not use this device in the presence of flammable liquids or gases. Sparks that are created during use may ignite gases.

- Do not exceed the relief flow capacity of the regulator. Use additional pressure relief devices at high pressure conditions.

- Do not inject hazardous liquids or combustible gases such as oxygen, alcohol, or liquid petroleum gas in the air supply system. Use only compressed air. Failure to comply will result in serious injury or loss of life.



- Risk of bursting: Release all pressure in the device before installing, servicing, relocating, or performing any maintenance.

- Do not use this device for any task other than that which it is designed to perform.

⚠ CAUTION!

Potential hazard that may result in minor or moderate injury.

- Do not wear watches, rings, bracelets, or loose clothing when using the device.
- Always follow all workshop safety rules, regulations, and conditions when using the device.
- Keep the work area clean. A cluttered or dirty workbench may lead to an accident. Floors should be kept clear.
- This device is not a toy. Use it with caution.
- Disconnect the device from the air supply before performing any maintenance, or changing accessories, when the device is not in use, when it is being handed to another person, and when it is left unattended. Failure to comply may result in moderate injury.

- Use safety goggles and ear protection: Wear safety glasses with side shields when operating the tool and verify that others in the work area are also wearing safety glasses. Safety glasses must conform to American National Standards Institute (ANSI Z87.1) requirements and must provide protection from flying particles from the front and the sides. Failure to comply may result in moderate injury.



⚠ NOTICE!

Potential hazard that may result in damage to equipment.

- Protect the air hose and the power cord from damage and puncture. Inspect them for weak or worn spots every week, and replace them if necessary.
- Ensure all connections are secure before using the device.

- Keep all nuts, bolts and screws tight.

Note: Recycle unwanted materials rather than disposing of it as waste. Sort the device, hose and packaging in specific categories and take to the local recycling center or dispose of it in an environmentally safe way.

General use

This Mastercraft® Self-Relieving Air Pressure Regulator can be used between the air supply and an air tool to control the air pressure on lines. The regulated output pressure range is 0–150 psi.

GUIDELINES FOR PROPER USE AND OPERATION

After unpacking the unit, inspect carefully for any damage caused during transit. Ensure fittings, bolts, etc., are tightened before putting unit into service.

Air system

- Always use clean, dry, regulated, compressed air.
- Do not operate the device at maximum or minimum pressures.

Read this Instruction Manual carefully before using the tool.

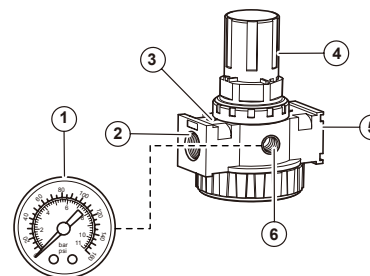
- If a filter-regulator-lubricator is installed, keep the air filter clean. A dirty filter will reduce the air pressure to the tool, which will cause a reduction in power, efficiency, and general performance.
- Verify that all connections in the air supply system are sealed in order to prevent air leakage.

⚠ WARNING!

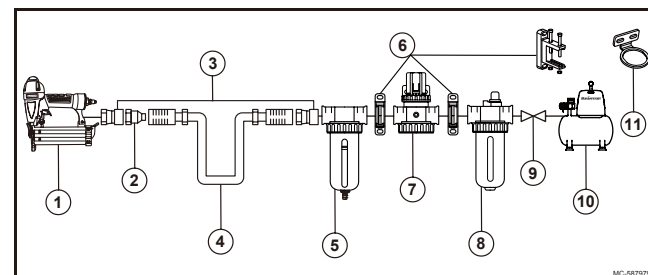
Potential hazard that could result in serious injury or loss of life.

- Do not use the device if it is not in proper working order.
- Do not use oxygen or any other combustible or bottled gas to power the tool.
- Do not use the tool in the presence of any flammable liquids or gases.
- Do not direct the air towards the operator or other people.

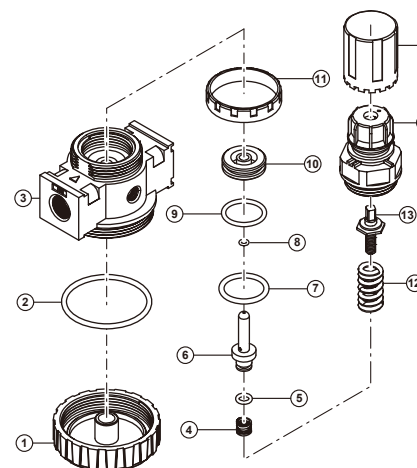
AIR PRESSURE REGULATOR 058-7979-4



No.	Description	Qty.
1	Gauge	1
2	Air inlet	1
3	Air flow direction arrow	1
4	Adjusting knob	1
5	Air outlet	1
6	1/8" NPT port	1



No.	Description
1	Air tool
2	Quick coupler
3	Quick connector
4	Air hose
5	Air filter
6	Modular bracket
7	Pressure regulator
8	Lubricator
9	Shut-off valve
10	Air compressor
11	Wall bracket



No.	Description	Qty.	No.	Description	Qty.
1	Down cover	1	9	O-ring 5	1
2	O-ring 1	1	10	Piston	1
3	Body valve	1	11	Nut	1
4	Spring	1	12	Spring	1
5	O-ring 2	1	13	Adjusting screw rod	1
6	Valve spool	1	14	Valve cover	1
7	O-ring 3	1	15	Knob	1
8	O-ring	1			

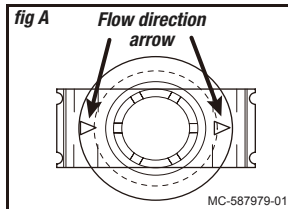
If any parts are missing or damaged, or if you have any questions, please call 1-800-689-9928.

Installation

⚠ Disconnect the power supply and release all pressure before installing, servicing, relocating, or performing any maintenance. Failure to comply will result in serious injury or loss of life.



- Place the regulator so the air flow direction arrows at the top portion of the regulator point from the air inlet to the air outlet (fig A).



- Install the gauge into one of the 1/8" NPT (National pipe thread) gauge ports. Use sealant tape on all threads of the gauge.
- Install one of the plugs into the other NPT gauge port. Use sealant tape on all threads of the plug.
- Mount the regulator in a vertical position as close as possible to the air supply.
- Connect the air supply to the 3/8" NPT air inlet of the regulator.

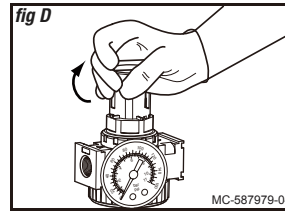
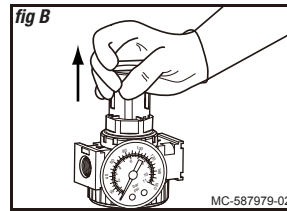
⚠ NOTICE!

Potential hazard that may result in damage to equipment.

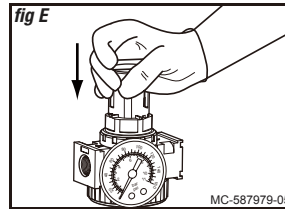
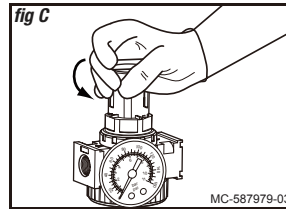
- Ensure the air flow direction arrows point to the outlet port before using the device.
- Always use the device with pipe size similar to that of the pipe which is in use.
- Do not use unnecessary fittings, couplings, etc., that restrict airflow.
- Ensure the adjusting knob of the regulator is unlocked when adjusting pressure.

Operating instructions

- Unlock the adjusting knob by pulling the knob away from the regulator (Fig B).
- Turn the knob counterclockwise until pressure is not applied on the regulating spring (Fig C).
- Turn on the air pressure supply and adjust the knob clockwise until the desired outlet pressure is reached (Fig D).
- Push the knob toward the regulator to set the desired pressure (Fig E).



- Turn the knob counterclockwise until pressure is not applied on the regulating spring (Fig C).



Maintenance

- Disconnect the device from the air supply and release all pressure before installing, servicing, relocating, or performing any maintenance.

MAINTENANCE REQUIRED	DESCRIPTION	TOOLS OR MATERIALS REQUIRED	MAXIMUM SERVICE INTERVAL		
			Each Use or every 2 Hrs	Monthly	As Needed
In-depth inspection	Worn or broken parts			X	X
Replace worn or broken parts					X

Storage

- When the device is not in use, clean and store it in a safe, dry, and childproof location.
- When temperatures are below freezing, keep the device as warm as possible using any safe, convenient method.
- The device should be stored in a clean and dry environment.

Mastercraft® limited warranty



This Mastercraft product carries a three-year LIMITED warranty against defects in workmanship and materials.

Subject to the conditions and limitations described below, this product, if returned to us with proof of purchase within the stated warranty period and if covered under this warranty, will be repaired or replaced (with the same model, or one of equal value or specification), at our option. We will bear the cost of any repair or replacement and any costs of labour relating thereto.

This warranty is subject to the following conditions and limitations:

- A bill of sale verifying the purchase and purchase date must be provided.
- This warranty will not apply to any product or part thereof that is worn or broken or that has become inoperative due to abuse, misuse, accidental damage, neglect or lack of proper installation, operation or maintenance (as outlined in the applicable Owner's Manual or operating instructions) or that is being used for industrial, professional, commercial or rental purposes.
- This warranty will not apply to normal wear and tear or to expendable parts or accessories that may be supplied with product and that are expected to become inoperative or unusable after a reasonable period of use.
- This warranty will not apply to routine maintenance and consumable items such as, but not limited to, fuel, lubricants, vacuum bags, blades, belts, sandpaper, bits, fluids, tune-ups or adjustments.
- This warranty will not apply where damage is caused by repairs made or attempted by others (i.e. anyone not authorized by the manufacturer).
- This warranty will not apply to any product that was sold to the original purchaser as a reconditioned or refurbished product (unless otherwise specified in writing).
- This warranty will not apply to any product or part thereof if any part from another manufacturer is installed therein or any repairs or alterations have been made or attempted by unauthorized persons.
- This warranty will not apply to normal deterioration of the exterior finish, such as, but not limited to, scratches, dents, paint chips, or to any corrosion or discoloring by heat, abrasive and chemical cleaners.
- This warranty will not apply to component parts sold by and identified as the product of another company, which shall be covered under the product manufacturer's warranty, if any.

Additional Limitations

This warranty applies only to the original purchaser and may not be transferred. Neither the retailer nor the manufacturer shall be liable for any other expense, loss or damage, including, without limitation, any indirect, incidental, consequential or exemplary damages arising in connection with the sale, use or inability to use this product.

Notice to Consumer

This warranty gives you specific legal rights, and you may have other rights, which may vary from province to province. The provisions contained in this warranty are not intended to limit, modify, take away from, disclaim or exclude any statutory warranties set forth in any applicable provincial or federal legislation.