

MAXIMUM™

6" (15,2 cm)

Heavy-duty Bench Grinder



Model no. 055-3503-6

IMPORTANT:

Please read this manual carefully before using this product, and save it for reference.

INSTRUCTION MANUAL

SPECIFICATIONS	4
SAFETY GUIDELINES	5-7
IMPORTANT INFORMATION	8-9
KEY PARTS DIAGRAM	10
PACKAGE CONTENTS	11
ASSEMBLY INSTRUCTIONS	12-14
OPERATING INSTRUCTIONS	15-16
MAINTENANCE	17-19
TROUBLESHOOTING	20
EXPLODED VIEW	21
PARTS LIST	22
WARRANTY	23-25

NOTE: If any parts are missing or damaged, or if you have any questions, please call our toll-free helpline at 1-888-670-6682.



SAVE THESE INSTRUCTIONS

This manual contains important safety and operating instructions. Read all instructions and follow them when using this product.

SPECIFICATIONS

MOTOR	120 V AC, 60 Hz, 2.5A
WHEEL SIZE	6 x 3/4" (15.2 x 1.9 cm) with 1/2" (1.27 cm) arbour
WHEEL GRIT	36- and 60-grit
VARIABLE SPEEDS	2000-3400 RPM (No load)
WEIGHT	25 lb 6 oz (11.5 kg)

GENERAL SAFETY GUIDELINES BEFORE USING THIS POWER TOOL



WARNING !

Failure to follow these rules may result in serious personal injury.

- Always wear safety glasses complying with OSHA/ANSI requirements Z87.1.
- Wear a mask or respirator when dust is generated.
- Keep bystanders out of the work area while operating the tool.
- Wheel guards and eye shields must be properly adjusted and tightened
- Always make sure wheels are properly mounted.
- Stand to the side of the grinder during start-up. Switch it on and let the grinder operate at full speed for approximately one minute so that any undetected flaws or cracks will become apparent.
- Use only 40 W (max.) bulbs on the work light.
- Use only 6" wheels suitable for 2000 RPM or over.
- Do not operate with cracked or chipped wheels.
- Keep guards in place and working properly.
- Keep hands clear of grinding wheels.
- Never reach behind or beneath the grinding wheels.
- Unplug from power supply before adjusting or servicing. The grinding wheels continue to rotate after the tool is switched off. Always allow wheels to stop before adjusting or servicing.
- To avoid electric shock, DO NOT use in damp conditions or expose to rain.
- When fitting a new grinding wheel, always check that the stated maximum RPM meets or exceeds that stated on the grinder. Also check the new wheel for damage, such as flaws or cracks. If the wheel appears satisfactory, fit it to the grinder.
- When a new grinding wheel has been fitted, stand to one side of the grinder and switch it on. Let the grinder operate at full speed for approximately one minute so that an undetected flaws or cracks will become apparent.
- Use only accessories that are recommended by the manufacturer for your model.
- DO NOT attempt to cut anything with the grinding wheel.
- Grounded tools must be plugged into an outlet that has been properly installed and grounded in accordance with all local codes and ordinances. Never remove the grounding prong from the plug or modify it in any way. Do not use adaptor plugs. If in doubt as to whether the outlet is properly grounded, consult a qualified electrician.
- Do not use the tool when tired or under the influence of drugs, alcohol or medication.
- Do not wear gloves, neckties, jewellery or loose clothing when using tool.
- Ensure the power switch is off prior to plugging in the tool.
- Do not overtighten spindle nuts.
- Spacing between tool rests and wheels should be set to 1/8" or less; hold workpiece firmly against tool rest.
- Service on these tools should only be performed by an authorized, qualified technician.
- Secure the tool when working to prevent unexpected movement.
- Failure to comply with these warnings may result in serious personal injury.
- There is a risk of injury due to accidental starting; do not use this tool in an area where children may be present.

ADDITIONAL SPECIFIC SAFETY RULES

1. DO NOT operate this machine until it is completely assembled and installed according to the instructions. A machine incorrectly assembled can cause serious injury.
2. OBTAIN ADVICE from your supervisor, instructor, or another qualified person if you are not thoroughly familiar with the operation of this machine. Knowledge is safety.
3. FOLLOW ALL WIRING CODES and recommended electrical connections to prevent shock or electrocution.
4. ALWAYS USE THE PROVIDED BLOTTER and wheel flanges to mount the grinding wheels on the grinder shaft to prevent wheel damage or accidental separation. Separation can result in fragments flying off the wheel at high speeds.
5. USE ONLY WHEELS suitable for the speed of the machine. Unsuitable grinding wheels can come apart, throwing fragments out at high speeds.
6. USE ONLY WHEELS that have a bore exactly equal to the arbours of the machine. Never attempt to machine an undersized wheel to fit an arbour. Unsuitable grinding wheels can come apart, throwing fragments out at high speeds.
7. DO NOT overtighten wheel nut.
8. DO NOT USE A WHEEL THAT VIBRATES. Dress the grinding wheel, replace it, or replace the bearings of the shaft. Unsuitable grinding wheels can come apart, throwing fragments at high speeds.
9. INSPECT WHEELS before starting the machine for cracks or fragments. REPLACE DAMAGED WHEELS immediately. Parts of the wheel can be thrown at high speeds causing serious injury.
10. ADJUST EYE SHIELDS close to the grinding wheel, and re-adjust as the wheel wears down. Flying sparks are dangerous and can cause fires or explosions.
11. ALWAYS MAKE SURE the eye shields are in place, properly adjusted, and secured.
12. ADJUST TOOL RESTS close to the grinding wheel (1/8" separation or less). Tighten the tool rest securely to prevent shifting positions, and re-adjust as the wheel wears down. The workpiece can be drawn into the wheel, causing damage to the workpiece and/or serious injury.

13. STAND TO ONE SIDE before turning the machine on . Loose fragments or wheel parts could fly from the wheel at high speeds.
14. NEVER GRIND ON A COLD WHEEL. Run the grinder for one full minute before applying the workpiece. A cold wheel has a tendency to chip. Those fragments could fly from the wheel at high speeds.
15. NEVER START THE MACHINE with the workpiece against the grinding wheel. The workpiece can be drawn into the wheel, causing damage to the machine and/or serious injury.
16. CLEAN THE MACHINE thoroughly when processing different types of workpieces (wood, steel, or aluminium). Combining wood and metal dust can create an explosion or fire hazard. DO NOT GRIND or polish magnesium. Fire will result.
17. NEVER GRIND NEAR FLAMMABLE GAS OR LIQUIDS. Sparks can create a fire or an explosion.
18. AVOID awkward operations and hand positions. A sudden slip could cause a hand to move into the grinding wheel.
19. KEEP ARMS, HANDS, and fingers away from the wheel. The abrasive surfaces can cause serious injury.
20. HOLD THE WORKPIECE FIRMLY against the tool rest. Loss of control of the workpiece can cause serious injury.
21. DRESS THE WHEEL on the face only. Dressing the side of the wheel could cause it to become too thin for safe use.
22. GRIND A WORKPIECE using the face of the grinding wheel only. Loss of control of the workpiece can cause serious injury.
23. NEVER APPLY COOLANT directly to the grinding wheel. Coolant can weaken the bonding strength of the grinding wheel and cause it to fail. Dip the workpiece in water to cool it.
24. DO NOT TOUCH the ground portion of a workpiece until it has cooled sufficiently. Grinding creates heat.
25. PROPERLY SUPPORT LONG OR WIDE workpieces. Loss of control of the workpiece can cause serious injury.
26. NEVER PERFORM LAYOUT, assembly , or set-up work on the table/work area when the machine is running. A sudden slip could cause a hand to move into the wheel. Severe injury can result.
27. TURN THE MACHINE OFF, disconnect the machine from the power source, and clean the table/work area before leaving the machine. Lock the switch in the "OFF" position to prevent unauthorized use. Someone else might accidentally start the machine and cause serious injury to themselves.

**WARNING!**

Read, understand and observe all instructions in this manual before using or operating the tool for which it is written and supplied. Ensure that anyone who is to use the tool has read and understood the instructions provided.

IMPORTANT INFORMATION-Electrical

A separate electrical circuit should be used for your machines. This circuit should not be less than #12 wire and should be protected with a 20 A time lag fuse. If an extension cord is used, use only 3-wire extension cords which have 3-prong grounding type plugs and matching receptacle which will accept the machine's plug. Before connecting the machine to the power line, make sure the switch is in the "OFF" position and be sure that the electric current is of the same characteristics as indicated on the machine. All line connections should make good contact. Running on low voltage will damage the machine.

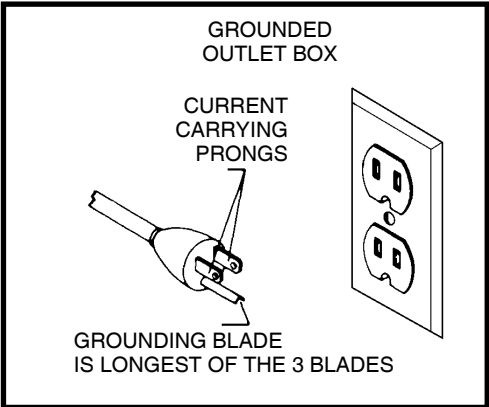


FIG. A

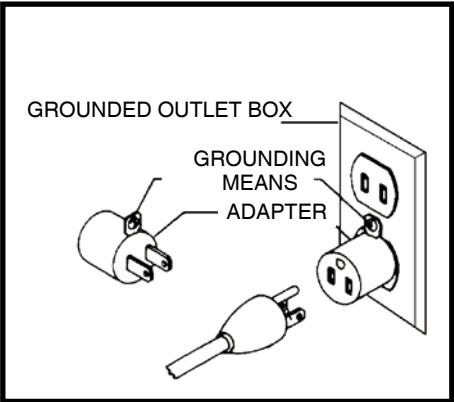


FIG. B

MOTOR SPECIFICATIONS

Your machine is wired for 120 V, 60 Hz alternating current. Before connecting the machine to the power source, make sure the switch is in the "OFF" position.

GROUNDING INSTRUCTIONS

All grounded, cord-connected machines: In the event of a malfunction or breakdown, grounding provides a path of least resistance for electric current to reduce the risk of electric shock. This machine is equipped with an electric cord having an equipment grounding conductor and a grounding plug.

DANGER!
DO NOT EXPOSE THE MACHINE TO RAIN OR OPERATE THE MACHINE IN DAMP LOCATIONS.

DANGER!
THIS MACHINE MUST BE GROUNDED WHILE IN USE TO PROTECT THE OPERATOR FROM ELECTRIC SHOCK.

The plug must be plugged into a matching outlet that is properly installed and grounded in accordance with all local codes and ordinances.

Do not modify the plug provided-if it will not fit the outlet, have the proper outlet installed by a qualified electrician.

Improper connection of the equipment-grounding conductor can result in risk of electric shock. The conductor with insulation having an outer surface that is green with or without yellow stripes is the equipment-grounding conductor. If repair or replacement of the electric cord or plug is necessary, do not connect the equipment-grounding conductor to a live terminal.

Check with a qualified electrician or service personnel if the grounding instructions are not completely understood, or if in doubt as to whether the machine is properly grounded.

Use only 3-wire extension cords that have 3-pronged grounding type plugs and matching 3-conductor receptacles that accept the machine's plug, as shown in Fig. A.

Repair or replace damaged or worn cord immediately.

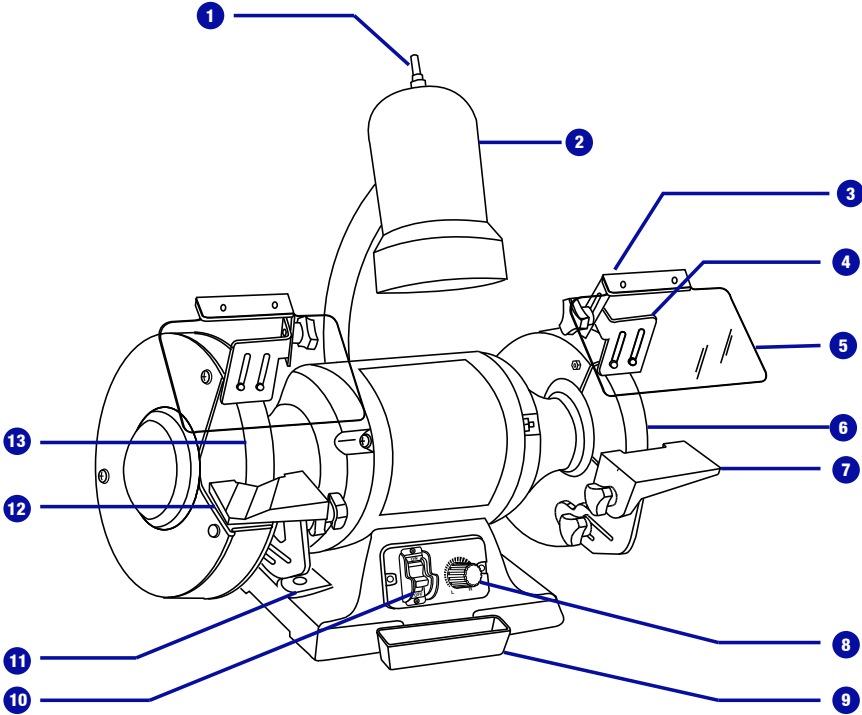
MINIMUM GAUGE FOR CORD SETS

Use proper extension cords. Make sure your extension cord is in good condition and is a 3-wire extension cord which has a 3-pronged grounding type plug and matching receptacle which will accept the machine's plug. When using an extension cord, be sure to use one heavy enough to carry the current of the machine. An undersized cord will cause a drop in line voltage, resulting in loss of power and overheating. The table shows the correct gauge to use depending on the cord length. If in doubt, use the next heavier gauge. The smaller the gauge number, the heavier the cord.

Ampere rating of the tool (120 V circuit only)		Total length of cord			
		25' (7.62 m)	50' (15.24 m)	100' (30.48 m)	150' (45.72 m)
more than	not more than	Minimum Gauge for the extension cord (AWG)			
0	6	18	16	16	14
6	10	18	16	14	12
10	12	16	16	14	12
12	16	14	12	Not recommended	

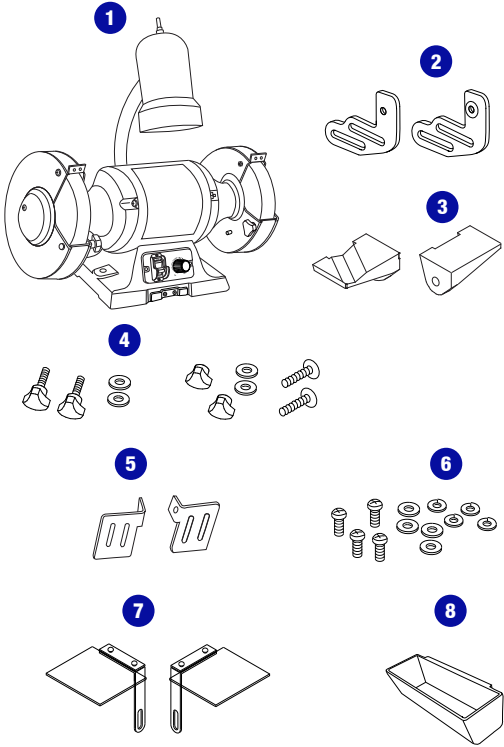
⚠ DANGER!
IN ALL CASES, MAKE CERTAIN THE RECEPTACLE IN QUESTION IS PROPERLY GROUNDED. IF YOU ARE NOT SURE, HAVE A QUALIFIED ELECTRICIAN CHECK THE RECEPTACLE.

No.	Description	Qty.
1	Work light On/Off switch	1
2	Work light	1
3	Eye shield support	1
4	Spark guard	1
5	Eye shield	1
6	36-grit grinding wheel	1
7	Right tool rest	1
8	Variable speed control	1
9	Coolant tray	1
10	On/Off switch	1
11	Mounting hole	1
12	Left tool rest	1
13	60-grit grinding wheel	1



Package contents

No.	Description	Qty.
1	Bench grinder	1
2	Tool rest mounting bracket	1
3	Tool rest	1
4	Locking knob/flat washer Locking nut knob/flat washer Carriage bolt	2
5	Spark guards	1
6	Star-head screw Lock washer Flat washer	4
7	Right/Left eye shields	1
8	Coolant tray	1

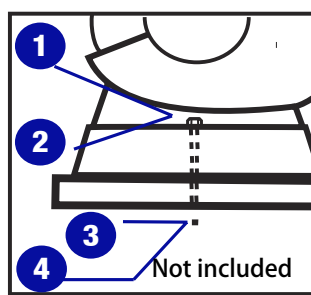


Mounting the Grinder to the Workbench

Before attempting to use this grinder, it must be properly mounted to a workbench or grinding stand.

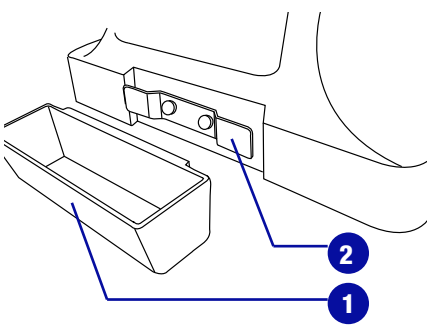
- Position the grinder on the workbench.
- Mark the workbench through the two mounting holes located in the grinder base.
- Drill holes in the workbench at the marks.
- Using two long bolts, washers, lock-washers and nuts, as shown (not supplied), secure the grinder to the workbench.

1	2	3	4
Bolt	Washer	Washer	Nut



INSTALLING THE COOLANT TRAY

Hang the coolant tray (1) on the clips (2).



CAUTION: Bench grinders vibrate. Grinder movement during high-speed rotation may cause injury or damage to the workpiece or operator. Mount the grinder securely to a sturdy workbench or grinding stand.

CAUTION! To avoid injury, make sure all parts are assembled and adjusted properly before plugging the grinder into a power outlet and turning it on.

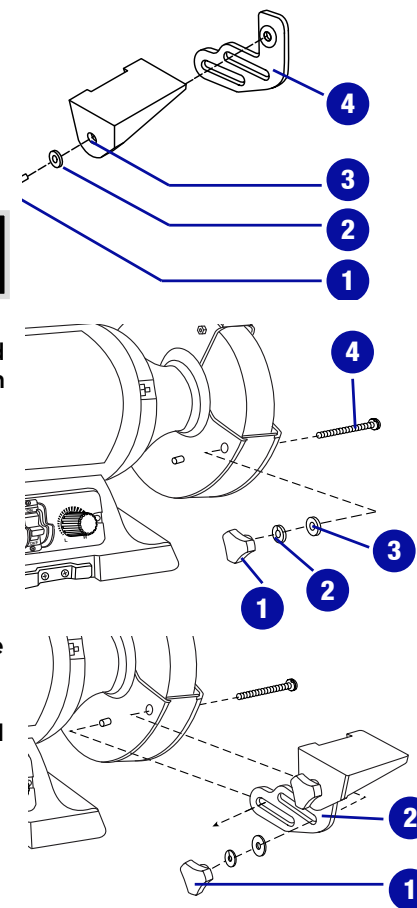
INSTALLING TOOL RESTS

Insert the lock knob (1) through the flat washer (2) and the right side tool rest (3) to the right side tool rest mounting bracket (4) as shown.

NOTE: The grooved tool rest mounts on the left side of grinder.

Remove the knob (1), lock washer (2) and flat washer (3) from the carriage bolt (4) on the lower portion of the wheel guard.

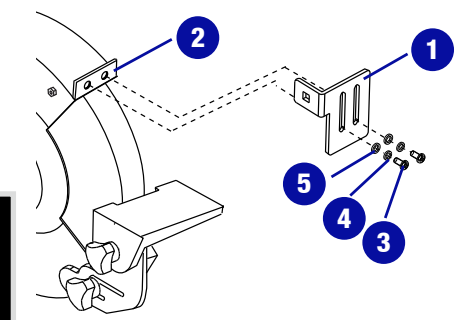
Attach the tool rest assembly (2) to the grinder as shown. Replace the washers and the lock knob (1). Repeat the procedure for the left side tool rest.



INSTALLING THE SPARK GUARDS

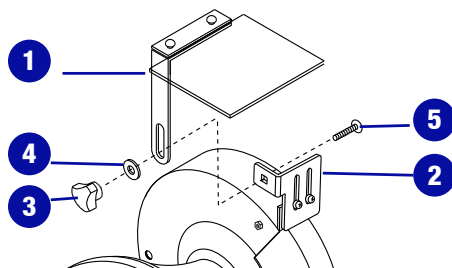
1. Attach the right spark guard (1) to the extended pad (2) of guard by using the bolts (3), spring washers (4) and flat washers (5).
2. Repeat for the left spark guard.

NOTE: As the wheel wears down, the spark guards must be re-adjusted to maintain a 1/16" (1.6 mm) distance.

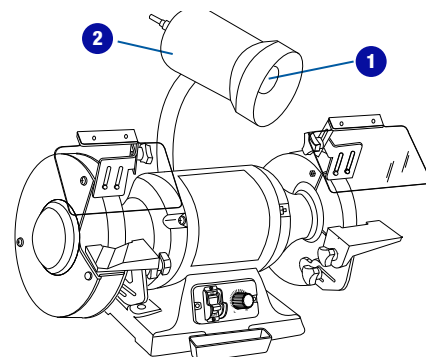


INSTALLING THE EYE SHIELDS

1. Attach the right eye shield (1) to the spark guard (2) by using the locking nut knob (3), lock washer (4) and the carriage bolt (5).
2. Repeat for left eye shield.

**INSTALLING THE BULB**

Install the new light bulb (1) (40 W bulb maximum) into the lampshade (2).

**CAUTION!**

- To avoid injury from an accidental start, make sure the switch is in the OFF position and the plug is not connected to a power outlet.
- To prevent injury resulting from heat of the light bulb, never touch the light bulb until it has completely cooled.
- To prevent electric shock, never touch any part of the light bulb when the plug is connected to a power outlet.
- It is recommended to use a vibration-resistant light bulb for this grinder.

NOTE: Adjust eye shields to appropriate distance from tool rests to avoid interference during operation.

The eye shield should move freely when being adjusted, but stay in place when the locking knob is tightened.

WARNING!

Turn the power off and remove the plug from the outlet before changing the grinding wheels. When turning the grinder on with a newly installed wheel, **DO NOT STAND IN FRONT OF THE GRINDER**. Stand to the side and allow the grinder to run for at least one minute before proceeding to use it.

Using Your Bench Grinder

This Mastercraft Maximum® 6" Bench Grinder is ideal for use in sharpening chisels, axes and other wood-cutting tools. It is also useful for repairing tips on screwdrivers and drill bits or for removing excess metal burrs from pieces of cut metal.

With the proper accessories, this tool can be used for cleaning metal surfaces using a wire brush or for buffing and polishing using a cloth wheel.

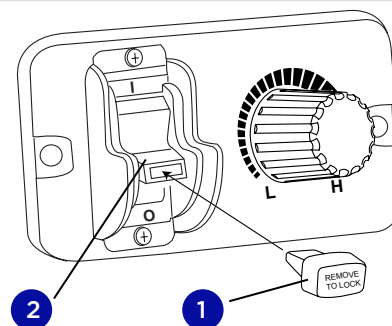
ON/OFF

The rocker ON/OFF power switch is located on the front of the grinder.

1. Press the side marked I to turn the grinder on.
2. Press the side marked O to turn the grinder off.
3. To lock the switch in the "O" position, grasp the end, of the switch key, and pull it out.
4. With the switch key (1) removed, the switch will not operate.
5. If the switch key is removed while the grinder is running, it can be turned off but cannot be restarted without inserting the switch key.

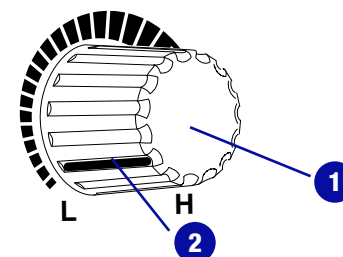
CAUTION !

Always lock the switch off when the grinder is not in use. Remove the key and keep it in a safe place. In the event of a power failure, blown fuse, or tripped circuit breaker, turn the switch off and remove the key, preventing an accidental startup when the power comes on.

**ADJUSTING THE SPEED OF THE GRINDER**

Your grinder is equipped with a variable speed control knob. The speed of the grinder may be adjusted by simply rotating the variable speed control knob (1).

1. To increase speed, rotate the variable speed control knob (1) clockwise.
 2. To reduce speed, rotate the variable speed control knob (1) counter-clockwise.
- (2) is the pointer on speed control knob.

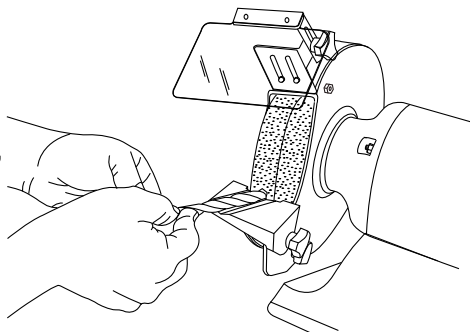


Grinding

- Adjust the tool rest to accommodate large or unusually shaped workpieces.
- Always keep the workpiece moving across the face of the grinding wheel. Grinding continuously on the same spot on the wheel will cause grooves to be worn into the wheel. The wheel may crack or become damaged more easily, and grinding of other objects will be difficult.
- If the workpiece becomes hot, dip it into water or oil to cool it.
- Always grind on the face of the wheel (around the diameter), NEVER on the sides. Side pressure on grinding wheels can cause cracking and damage.
- If the face of the grinding wheel is worn unevenly, becomes grooved, or is no longer smooth and flat, the wheel should be reshaped with a dressing tool (not supplied).
- If the grinding wheel is no longer round, the wheel should be reshaped with a dressing tool or replaced.
- If the surface of the wheel becomes loaded and dull with workpiece material, the wheel should be cleaned with a dressing tool.
- After reshaping, always readjust the tool rests and spark arrestors.

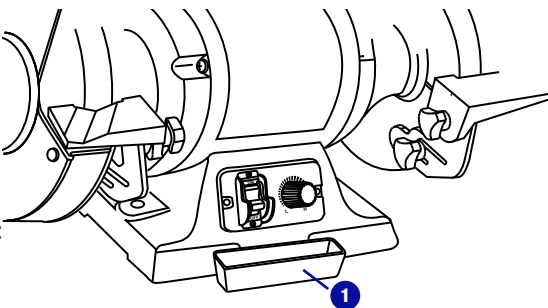
TWIST DRILL BITS

Drill bits are best sharpened on a sharpening jig, available at most hardware stores, but can be “dressed up” on your grinder. Begin on one side of the point at the existing angle, then twist the bit while maintaining a constant angle with grinding surface. Sharpen only the tip. This technique requires considerable practice, so take your time and make a few “dry runs” first with the grinder off. Be sure to maintain the original cutting edge angle as this is important to the efficiency of your bits. One tool rest has a V-groove that is correctly angled for most drill bits.



COOLANT TRAY

When grinding, metal objects become heated quickly. It is important to keep moving the object back and forth across the face of the grinding wheel and to cool the object frequently using the coolant tray.



Maintenance

Maintenance Required	Frequency
Check power cord	Before each use
Check wheels for cracks	Before each use
Check moving parts for alignment and binding issues	Before each use
Dress grinding wheels	As needed
Replace grinding wheels (see manual section for specifics)	As needed
Clean and vacuum dust from the motor housing and other grinder parts	As needed
Replace work-light bulb	As needed

Service beyond recommended maintenance on these tools should only be performed by an authorized, qualified technician.

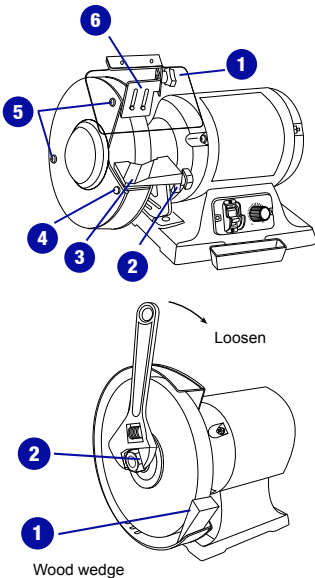
Installing or Changing the Wheel

CAUTION!

Turn off and unplug the bench grinder. Use only grinding wheels that measure 6" (150 mm) in diameter. This tool has 1/2" (12.7 mm) arbours on both sides.

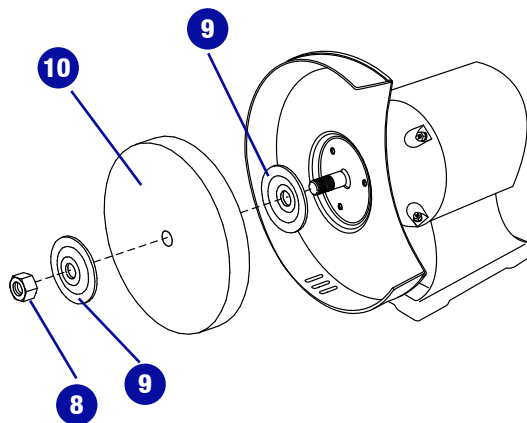
1. Raise the eye shield (1) out of the way and place the spark guard (6) in its highest setting.
2. Loosen the knob (2) and remove the tool rest assembly (3) and carriage bolt (4).
3. Remove the two screws (5) from the left side wheel cover and then remove the outer cover.
4. To prevent wheel rotating, place a wood wedge (1) (not supplied) between the wheel and the wheel cover as shown.

Remove the hex nut (2) (as shown in right fig).



NOTE: Using a metal object, like a screwdriver, is not recommended as it may damage the grinding wheel.

5. Remove the hex nut (8) (as shown), the wheel flanges (9) and the wheel (10).



6. Inspect the wheel (10) for cracks, chips or any other visible damage (other than normal wear) and discard if such damage is found. Inspect the blotter/cardboard disc for damage. If the blotter is missing or severely damaged, replace it with a piece of thin cardboard or blotter paper cut in the same shape.
7. Install the new wheel or other accessory. Make sure both wheel flanges (9) are in place with the concave sides towards the wheels.
8. Place a wood wedge (7) (not supplied) between the wheel and the wheel cover as shown
9. Replace the wheel cover and screws.
10. Adjust the tool rest to 1/8" (3.2 mm) away from the wheel and tighten securely.
11. Reattach and adjust the eye shield to a point between your eyes and the wheel.
12. Set the spark guard 1/16" (1.6 mm) away from the wheel.

NEVER USE A GRINDING WHEEL WITHOUT A BLOTTER.

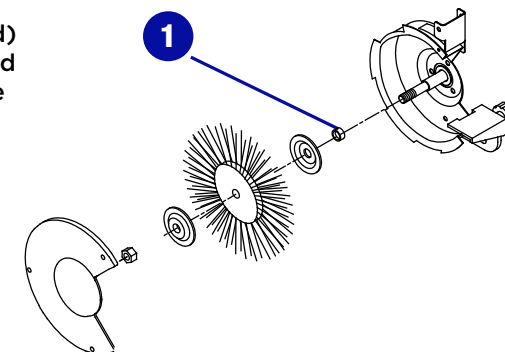
NOTE: Do not overtighten the nut as this can crack the grinding wheel.

NOTE: The nut on the right side of the grinder has a standard right-hand thread (turn counter-clockwise to loosen). The one on the left side has a left-hand thread (turn clockwise to loosen). Both wheel nuts tighten when turning towards the rear of the grinder and loosen when turning towards the front of the grinder.

WIRE WHEEL OR BUFFING WHEEL

A wire wheel or buffing wheel (not supplied) may be used with your grinder. You will need to add one or more spacers (1) to allow the arbour hex nut to tighten correctly.

wire wheel : 6 x 1/2" with a maximum speed of 4500 RPM.



DRESSING A GRINDING WHEEL

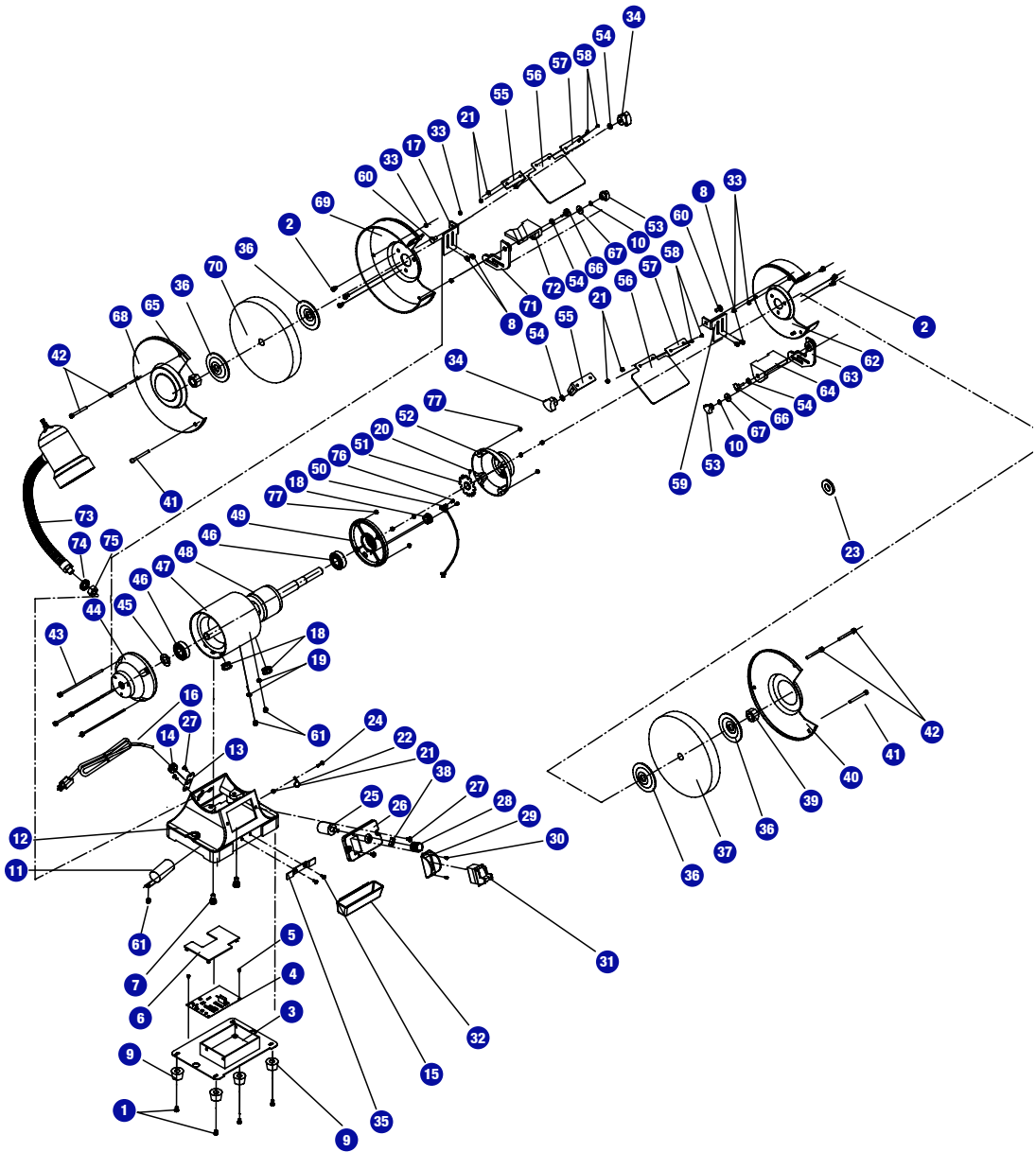
Bring the dressing tool (not included) forward on the tool rest until it touches the high point on the face of the wheel. Dress the wheel by moving the dressing tool back and forth. Repeat this operation until the face of the grinding wheel is clean and the corner of the wheel is square.

NOTE: DO NOT use the wheel dressing tool on wire wheels.

WORK-LIGHT BULB REPLACEMENT

When the light bulb is worn out and will no longer work, purchase a replacement bulb. To replace, gently push the light bulb into the socket and turn clockwise. Uses Max 40 W anti-vibration light bulb.

SYMPTOM	PROBABLE CAUSE	CORRECTIVE ACTION
Motor will not start.	Low Voltage.	Check power source for proper voltage.
	Open circuit in motor or loose connections.	Inspect all lead connection on motor for loose or open connections. (Send for Servicing.)
	Blown fuse or breaker.	Short circuit. (Send for Servicing.) Change a fuse on PC board
Motor overheats.	Motor overloaded.	Reduce load on motor.
	Extension cord too long and of insufficient gauge (weight).	Utilize an extension cord of appropriate gauge and length or plug tool directly into outlet.
Motor stalls (resulting in blown fuses or tripped circuit).	Short circuit in motor or loose connections.	Inspect connections on motor for loose or shorted terminals or worn insulation. (Send for Servicing.)
	Low voltage.	Correct low voltage conditions (for example: improper extension cord length and/or gauge).
	Incorrect fuses or circuit breakers in power line.	Install correct fuses or circuit breakers or plug tool into an appropriate circuit
	Motor overload.	Reduce the load on the motor.
Wav y condition on surface of workpiece.	Machine vibrating.	Ensure machine is securely mounted on a solid surface.
	Workpiece not being held firmly.	Use a holding device to firmly retain the workpiece.
	Wheel face uneven.	Dress the grinding wheel.



Item	Description	Qty	Item	Description	Qty
1	Star-head screw	4	40	Right safty guard cover	1
2	Philips Screw with spring washer	6	41	Carriage bolt	2
3	Base cover	1	42	Star-head screw	4
4	Pc board	1	43	Star-head screw (white)	4
5	Star-head screw	2	44	Left end cap	1
6	Pc board cover	1	45	Wavy washer	1
7	Star-head screw	2	46	Ball bearing	2
8	Star-head Screw	4	47	Stator	1
9	Rubber foot	4	48	Rotor	1
10	Lock washer	2	49	Right end cap	1
11	Capacitor	1	50	Sensor	1
12	Base	1	51	Plate	1
13	Cord clip fixing plate	1	52	Right end cap	1
14	Cord clip	1	53	Lock nut	2
15	Star-head screw	2	54	Flat washer	4
16	Cord & plug	1	55	Eye shield mounting rod	2
17	Left Spark Shield	1	56	Eye shield	2
18	Cord bushing	3	57	Eye shield plate	2
19	Toothed lock washer	2	58	Star-head screw	4
20	Inner hex head set screw	1	59	Right spark shield	1
21	Flange hex nut	5	60	Small carriage bolt	2
22	Wire fix ring	1	61	Star-head screw (white)	3
23	Ring for brush wheel	1	62	Right safety guard	1
24	Star-head screw	1	63	Right fixed work rest	1
25	Speed controller	1	64	Right movable work rest	1
26	Switch plate	1	65	Hex nut (white)	1
27	Star-head screw	4	66	Locking knob	2
28	Speed control knob	1	67	Big flat washer (white)	2
29	Switch guard	1	68	Left safety guard cover	1
30	Star-head screw	2	69	Left safety guard	1
31	Switch	1	70	Wheel 60#	1
32	Coolant tray	1	71	Left fixed work rest	1
33	Flange hex nut	4	72	Left movable work rest	1
34	Lock nut	2	73	Lamp holder (40 w)	1
35	Coolant tray clip	1	74	Flat washer	1
36	Flange	4	75	Hex nut (white)	1
37	Wheel	1	76	Star-head screw	2
38	Rubber cover	1	77	Hex nut	8
39	Hex nut	1			

5-Year Limited Warranty

This MAXIMUM product is guaranteed for a period of 5 years from the date of original retail purchase against defects in workmanship and materials only and is subject to the following components:

- Component A: The carrying case is guaranteed for a period of 1-year from the date of original retail purchase against defects in workmanship and materials.
- Component B: Accessories, including drill bits and saw blades, do not carry a warranty.

Subject to the conditions and limitations described below, this product, if returned to us with proof of purchase within the stated warranty period and if covered under this warranty, will be repaired or replaced (with the same model, or one of equal value or specification), at the sole discretion of the Maximum Canada authorised repair centre ("Service Provider"). We will bear the cost of any repair or replacement and any costs of labour relating thereto.

These warranties are subject to the following conditions and limitations:*

- a bill of sale verifying the purchase and purchase date must be provided;
- defects in workmanship and material to be assessed and determined by the Service Provider;
- this warranty will not apply to any product or part thereof which is worn or broken or which has become inoperative due to abuse, misuse, accidental damage, neglect or lack of proper installation, operation or maintenance (as outlined in the applicable owner' s manual or operating instructions);
- this warranty does not apply to normal wear and tear or to expendable parts or accessories (including drill bits and saw blades) that may be supplied with the product that by their nature have a limited life span and are expected to become inoperative or unusable after a reasonable period of use;
- this warranty will not apply to routine maintenance and consumable items such as, but not limited to, fuel, lubricants, vacuum bags, blades, belts, sandpaper, bits, fluids, rubber o-rings, tune-ups or adjustments;
- this warranty excludes the following components that may accompany your product:
 - The carrying case, which is only for a period of 1-year from the date of original retail purchase against defects in workmanship and materials.
 - Accessories, including drill bits and saw blades, which do not carry a warranty of any kind.
- this warranty will not apply where damage is caused by repairs made or attempted by others (i.e. persons not authorized by the manufacturer), and any such unauthorized repairs or attempted repairs shall void this warranty in its entirety;
- this warranty will not apply to any parts other than original parts, except to the extent that the retailer or manufacturer or persons authorized by either of them have repaired or replaced them;
- this warranty will not apply to any product that was sold to the original purchaser as a reconditioned or refurbished product (unless otherwise specified in writing);
- this warranty will not apply to any product or part thereof if any part from another manufacturer is installed therein or any repairs or alterations have been made or attempted by unauthorized persons;



- k) this warranty will not apply to normal deterioration of the exterior finish, such as, but not limited to, scratches, dents, paint chips, or to any corrosion or discolouring by heat, abrasive and chemical cleaners;
- l) this warranty will not apply to component parts sold by and identified as the product of another company, which shall be covered under that product manufacturer's warranty, if any;
- m) any products replaced by the retailer in attempt to fulfill warranty obligations is subject to the original product warranty conditions and related time period as initiated by the original date of purchase; if product is purchased in Quebec, the warranty term will be extended for a period equal to the time during which the Quebec retailer possesses the product in attempt to fulfill warranty obligations; replaced product will not default to new product warranty conditions; and
- n) The retailer and manufacturer's sole obligation and the purchaser's sole remedy under this warranty shall be as set out herein. The warranties contained herein are not transferable and are given only to the purchaser.

FURTHER, THE WARRANTIES SET OUT HEREIN ARE IN LIEU OF ALL OTHER WARRANTIES OR CONDITIONS, WHETHER EXPRESS, IMPLIED OR STATUTORY (INCLUDING SUCH AS ARISE UNDER THE SALE OF GOODS ACT OR THE INTERNATIONAL SALE OF GOODS ACT), ARISING OUT OF A COURSE OF DEALING OR USAGE OF TRADE OR OTHERWISE, INCLUDING, SUBJECT TO APPLICABLE LAW, ANY IMPLIED WARRANTIES OR CONDITIONS OF MERCHANTABILITY, MERCHANTABLE QUALITY, FITNESS OR ADEQUACY FOR A PARTICULAR PURPOSE OR USE, AND ALL OTHER SUCH WARRANTIES ARE EXPRESSLY DISCLAIMED BY THE RETAILER AND MANUFACTURER.

Additional Limitations

This warranty applies only to the original purchaser and may not be transferred. This warranty applies for a period of 5 years from the date of original retail purchase, as indicated on the bill of sale. Neither the retailer, Maximum Canada, nor the manufacturer shall be liable for any other expense, loss or damage, including, without limitation, any indirect, incidental, consequential or exemplary damages arising in connection with the sale, use or inability to use this product. Under no circumstances shall the retailer, Maximum Canada, or manufacturer be liable to the purchaser for any claim for (a) indirect, special, punitive, incidental, exemplary, or consequential damages, (b) compensation for loss of profits, anticipated revenue, savings or goodwill, or other economic loss of the purchaser, (c) exemplary, aggravated or punitive damages howsoever incurred, (d) contribution or set-off in respect of any claims against the purchaser, (e) any damages whatsoever relating to third party products or services or the purchaser's materials, or (f) any damages whatsoever relating to interruption, delays, errors or omissions; in each case under any theory of law or equity, arising out of or in any way related to this warranty, even if advised of the possibility thereof. Notwithstanding any provision herein or entitlement of the purchaser at law, in equity or otherwise, in no event shall the liability of the retailer or manufacturer under this warranty, whether in contract, tort, product liability or otherwise, exceed, in the aggregate, the amount paid by the purchaser to the retailer for the product to which this warranty applies.

*Notice to Consumer

This warranty gives you specific legal rights, and you may have other rights, which may vary from province to province. The provisions contained in this warranty are not intended to limit, modify, take away from, disclaim or exclude any statutory warranties set forth in any applicable provincial or federal legislation.

In addition to the 5-Year Limited Warranty, this MAXIMUM product is covered by our:

1-Year Repair Warranty

Maximum Canada will maintain this product and replace critical parts which have worn beyond reasonable use through normal use of such product, any time during the first year after purchase.

The following are excluded from this 1-Year Repair Warranty:

- a) Missing or damaged parts or components that are a result of abuse or misuse;
- b) Any wear and tear to non-critical parts or accessories that do not affect the core function of the product.

90-Day Satisfaction Guarantee

If you are not completely satisfied with the performance of your MAXIMUM product for any reason, you can return it within 90 days from the date of purchase with proof of purchase for exchange or a full refund.