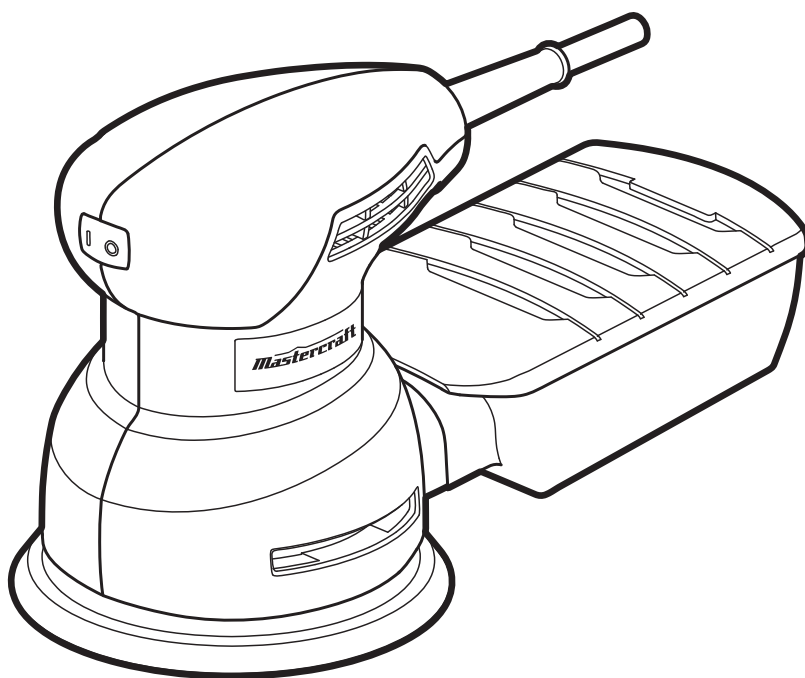


model no. 054-8392-0

Mastercraft[®] MD

RANDOM ORBIT SANDER



IMPORTANT:

Read and understand this instruction manual thoroughly before using the product.

INSTRUCTION MANUAL

TABLE OF CONTENTS

Technical Specifications	4
Safety Guidelines	5
Key Parts Diagram	9
Assembly Instructions	10
Operating Instructions	12
Maintenance	13
Troubleshooting	15
Parts List	16
Warranty	18

NOTE:

If any parts are missing or damaged, or if you have any questions, please call our toll-free helpline at 1-800-689-9928.

**SAVE THESE INSTRUCTIONS**

- This manual contains important safety and operating instructions. Read all instructions and follow them with use of this product.

TECHNICAL SPECIFICATIONS

Rated power input	2.4A
Rated voltage	120V~, 60 Hz
No-load speed	12,500 OPM
Pad size	5" (12.7 cm)
Pad type	Hook-and-loop fastening system with 8 holes
Tool weight	2 lb 10 oz (1.19 kg)
Noise level	L_p : 79.6 dB(A); L_w : 90.6 dB(A)
Vibration	a_{hh} =4.07 m/s ² ; K=1.5

SAFETY GUIDELINES**WARNING!**

Safety symbols in this instruction manual are used to flag possible dangers. The safety symbols and their explanations require your full understanding. The safety warnings do not, by themselves, eliminate any danger, nor are they substitutes for proper accident prevention measures.

**WARNING!**

This safety alert symbol indicates caution, warning, or danger. Failure to obey a safety warning can result in serious injury to yourself or others. To reduce the risk of injury, fire, or electric shock, always follow the safety precautions.

KNOW YOUR TOOL

To operate this tool, carefully read this instruction manual and all labels affixed to the random orbit sander before using. Keep this manual available for future reference.

IMPORTANT

This tool should only be serviced by a qualified service technician. For more information, call the toll-free helpline at 1-800-689-9928.

READ ALL INSTRUCTIONS THOROUGHLY**SAVE THESE INSTRUCTIONS****GENERAL POWER TOOL SAFETY WARNINGS****WARNING!**

Read all safety warnings and instructions. Failure to follow the warnings and instructions may result in electric shock, fire and/or serious injury.

SAVE ALL WARNINGS AND INSTRUCTIONS FOR FUTURE REFERENCE.

The term “power tool” in the warnings refers to your mains-operated (corded) power tool or battery-operated (cordless) power tool.

WORK AREA SAFETY

- **Keep the work area clean and well lit.** Cluttered or dark areas invite accidents.
- **Do not operate power tools in explosive atmospheres, such as in the presence of flammable liquids, gases or dust.** Power tools create sparks, which may ignite the dust or fumes.
- **Keep children and bystanders away while operating a power tool.** Distractions can cause you to lose control.

ELECTRICAL SAFETY

- **Power tool plugs must match the outlet. Never modify the plug in any way. Do not use any adapter plugs with earthed (grounded) power tools.** Unmodified plugs and matching outlets will reduce risk of electric shock.
- **Avoid body contact with earthed or grounded surfaces, such as pipes, radiators, ranges and refrigerators.** There is an increased risk of electric shock if your body is earthed or grounded.
- **Do not expose power tools to rain or wet conditions.** Water entering a power tool will increase the risk of electric shock.
- **Do not abuse the cord. Never use the cord for carrying, pulling or unplugging the power tool. Keep cord away from heat, oil, sharp edges or moving parts.** Damaged or entangled cords increase the risk of electric shock.
- **When operating a power tool outdoors, use an extension cord suitable for outdoor use.** Use of a cord suitable for outdoor use reduces the risk of electric shock.
- **If operating a power tool in a damp location is unavoidable, use a ground-fault circuit interrupter (GFCI) protected supply.** Use of a GFCI reduces the risk of electric shock.

PERSONAL SAFETY

- **Stay alert, watch what you are doing and use common sense when operating a power tool. Do not use a power tool while you are tired or under the influence of drugs, alcohol or medication.** A moment of inattention while operating power tools may result in serious personal injury.
- **Use personal protective equipment. Always wear eye protection.** Protective equipment such as dust mask, non-skid safety shoes, hard hat, or hearing protection used for appropriate conditions will reduce personal injuries.
- **Prevent unintentional starting. Ensure that the switch is in the off-position before connecting to power source and/or battery pack, picking up or carrying the tool.** Carrying power tools with your finger on the switch or energising power tools that have the switch on invites accidents.
- **Remove any adjusting key or wrench before turning the power tool on.** A wrench or a key left attached to a rotating part of the power tool may result in personal injury.
- **Do not overreach. Keep proper footing and balance at all times.** This enables better control of the power tool in unexpected situations.
- **Dress properly. Do not wear loose clothing or jewellery. Keep your hair, clothing and gloves away from moving parts.** Loose clothes, jewellery or long hair can be caught in moving parts.
- **If devices are provided for the connection of dust extraction and collection facilities, ensure that these are connected and properly used.** Use of these devices can reduce dust-related hazards.

POWER TOOL USE AND CARE

- **Do not force the power tool. Use the correct power tool for your application.** The correct power tool will do the job better and more safely at the rate for which it was designed.
- **Do not use the power tool if the switch does not turn it on and off.** Any power tool that cannot be controlled with the switch is dangerous and must be repaired.
- **Disconnect the plug from the power source and/or the battery pack from the power tool before making any adjustments, changing accessories, or storing power tools.** Such preventive safety measures reduce the risk of starting the power tool accidentally.
- **Store idle power tools out of the reach of children and do not allow persons unfamiliar with the power tool or these instructions to operate the power tool.** Power tools are dangerous in the hands of untrained users.
- **Maintain power tools. Check for misalignment or binding of moving parts, breakage of parts and any other condition that may affect the power tool's operation. If damaged, have the power tool repaired before use.** Many accidents are caused by poorly maintained power tools.
- **Keep cutting tools sharp and clean.** Properly maintained cutting tools with sharp cutting edges are less likely to bind and are easier to control.
- **Use the power tool, accessories, tool bits, etc. in accordance with these instructions, taking into account the working conditions and the work to be performed.** Use of the power tool for operations different from those intended could result in a hazardous situation.

SERVICE

- **Have your power tool serviced by a qualified repair person using only identical replacement parts.** This will ensure that the safety of the power tool is maintained.

SAFETY GUIDELINES FOR SANDER

- **Hold power tool by insulated gripping surfaces, when performing an operation where the cutting accessory may contact hidden wiring or its own cord.** Cutting accessory contacting a "live" wire may expose metal parts of the power tool "live" and could give the operator an electric shock.
- **A suitable breathing respirator must be worn while sanding lead paint,** some woods and metal to avoid breathing the harmful/toxic dust or air.
- **Always wear safety goggles and a dust mask when sanding,** especially sanding overhead.
- **The machine is not suitable for wet sanding.**
- **Secure the workpiece.** A workpiece clamped with clamping devices or in a vise is held more securely than by hand.
- **Do not leave the tool running.** Operate the tool only when hand-held.

- **Protect your hearing. Wear appropriate personal hearing protection during use.** Under some conditions and duration of use, noise from this product may contribute to hearing loss.
- **The label on your tool may include the following symbols. The symbols and their definitions are as follows:**

V Volts

A Amperes

Hz Hertz

W Watts

min Minutes

~ Alternating current


= = Direct current

n₀ No-load speed
 Class II Construction

.../min Revolutions or reciprocation per minute

 Grounding terminal

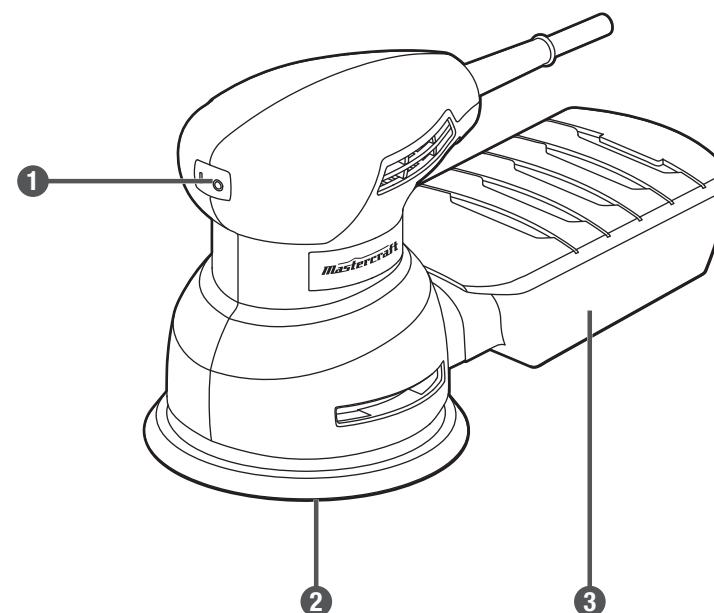
BPM Beats per minute

 WARNING – To reduce the risk of injury, user must read instruction manual.

 WARNING – To reduce the risk of injury always wear eye protection.

 WARNING – To reduce the risk of injury always wear ear protection.
PACKAGE CONTENTS:

Random orbit sander, sandpaper, dust box and instruction manual.

KEY PARTS DIAGRAM

No.	Description
1	Sealed on/off rocker switch
2	Sanding pad

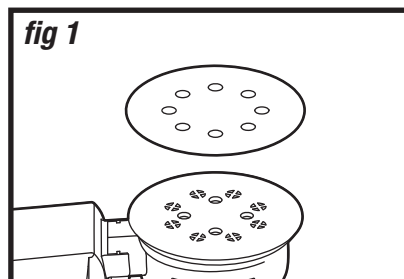
No.	Description
3	Dust box

**WARNING!**

- Remove the sander from the package and examine it carefully. Do not discard the carton or any packaging material until all parts have been examined.

ASSEMBLY INSTRUCTIONS**ATTACHING THE SANDPAPER (fig 1)**

1. Disconnect the sander from the power source.
2. Place the sander upside down on a flat surface.
3. Remove any dust or debris from the sanding pad.
4. Align the holes of the sandpaper with the holes in the sanding pad and firmly press the sandpaper against the sanding pad to ensure a good attachment.



NOTICE: In order for the dust extraction system to operate properly, the holes in the pad must align with holes in the sandpaper.

**WARNING!**

- Never connect the sander to the power source when you are assembling parts, making adjustments, installing or removing sandpaper, cleaning, or when it is not in use. Disconnecting the sander will prevent accidental starting, which could cause serious personal injury.

DUST BOX

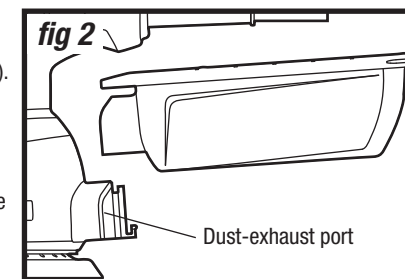
Your sander is supplied with a dust box to help you keep the working area clean. The dust box is ideal for smaller jobs.

To install:

1. Disconnect the sander from the power source.
2. Press the dust box port down onto the slot in the dust-exhaust port until the detent fully engages with corresponding opening in the dust box (fig 2).

To remove:

1. Disconnect the sander from the power source.
2. Raise the dust box port and remove the box from the sander.

**SELECTING THE RIGHT GRADE OF SANDPAPER**

Different grades of sandpaper can be purchased from the store where you purchased the tool.

Available grades are: Coarse, Medium and Fine.

Use a coarse grit to sand down rough finishes, medium grit to smooth the work and fine grit to finish off.

It is best to make a trial run on a scrap piece of material to determine the optimum grades of sandpaper for a particular job.

**WARNING!**

- Do not use the dust box when sanding metal. Using the dust box when sanding metal creates a fire hazard, which could damage the tool and lead to serious personal injury.

OPERATING INSTRUCTIONS**TURNING THE SANDER ON/OFF (fig 3)**

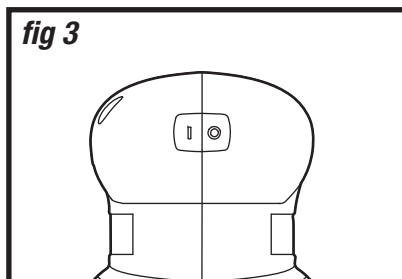
To turn on the sander, depress the side of the rocker switch marked "I".

To turn it off, depress the side of the rocker switch marked "O".

SANDING

This sander can be used for most sanding operations on materials such as wood, plastic, metal and painted surfaces. Do not use the sander for wet sanding.

1. Plug the sander to the power source.
2. Place the sander on the workpiece so that the sandpaper is fully in contact with the workpiece.
3. Start the sander.
4. For best sanding results, apply light pressure on the sander, but do not force the tool.
5. Move the sander slowly over the workpiece, making successive passes in parallel lines, circles, or crosswise movements. The removal rate and the sanding pattern are determined by the choice of sandpaper and the work surface.
6. Do not allow sanding on one spot too long, as the sander's rapid action may remove too much material and make the surface uneven.
7. Upon completion of the sanding operation, remove the sander from the workpiece, turn the sander off and wait until it comes to a complete stop before putting it down.



NOTE: Applying additional pressure only slows the motor, rapidly wears sandpaper, and greatly reduces sander speed. Excessive pressure will overload the motor, possibly causing damage from motor overheating and can result in inferior work.

**WARNING!**

- Before connecting the sander to a power source, always check to be sure that the switch is in the OFF (O) position. Failure to do so could result in accidental starting of the sander, causing possible serious injury.

MAINTENANCE**BEFORE EACH USE**

1. Inspect the sander, the rocker switch, the cord and the accessories for damage.
2. Check for damaged, missing, or worn parts.
3. Check for loose screws, misalignment or binding of moving parts, or any other condition that may affect the operation.
4. If abnormal vibration or noise occurs, turn the tool off immediately and have the problem corrected before further use.
5. Unplug the tool from the power source before cleaning or performing any maintenance. Using compressed air may be the most effective cleaning method. Always wear safety goggles when cleaning tools using compressed air.

LUBRICATION

All of the bearings in this tool are lubricated with a sufficient amount of high-grade lubricant for the life of the unit under normal conditions. Therefore, no further lubrication is required.

**WARNING!**

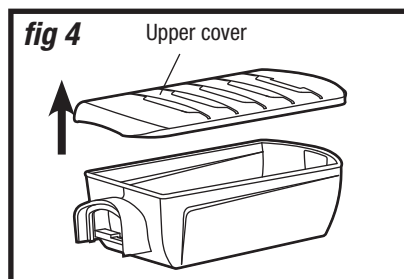
- Do not let brake fluids, gasoline and petroleum-based products, penetrating oil, etc. come into contact with plastic parts. These substances contain chemicals that can damage, weaken, or destroy plastic.
- When servicing, use only identical replacement parts. The use of any other parts may create a hazard or cause damage to the product.
- Use only accessories that are recommended for this sander by the manufacturer. Accessories that may be suitable for one tool may become hazardous when used with another tool.
- If the supply cord is damaged, it must be replaced by a specially-prepared cord available through the service organization.
- To ensure safety and reliability, all repairs should be performed by a qualified service technician.

CLEANING THE DUST BOX (fig 4)

Always empty and clean the dust box thoroughly when you've finished sanding and before you store the sander.

To empty the dust box

1. Remove the dust box from the sander and shake out the dust.
2. For a more thorough cleaning of the dust box, open the upper cover and gently shake or tap the dust box to empty it.
3. Use a soft brush to clean the filter in the cover.

**TROUBLESHOOTING**

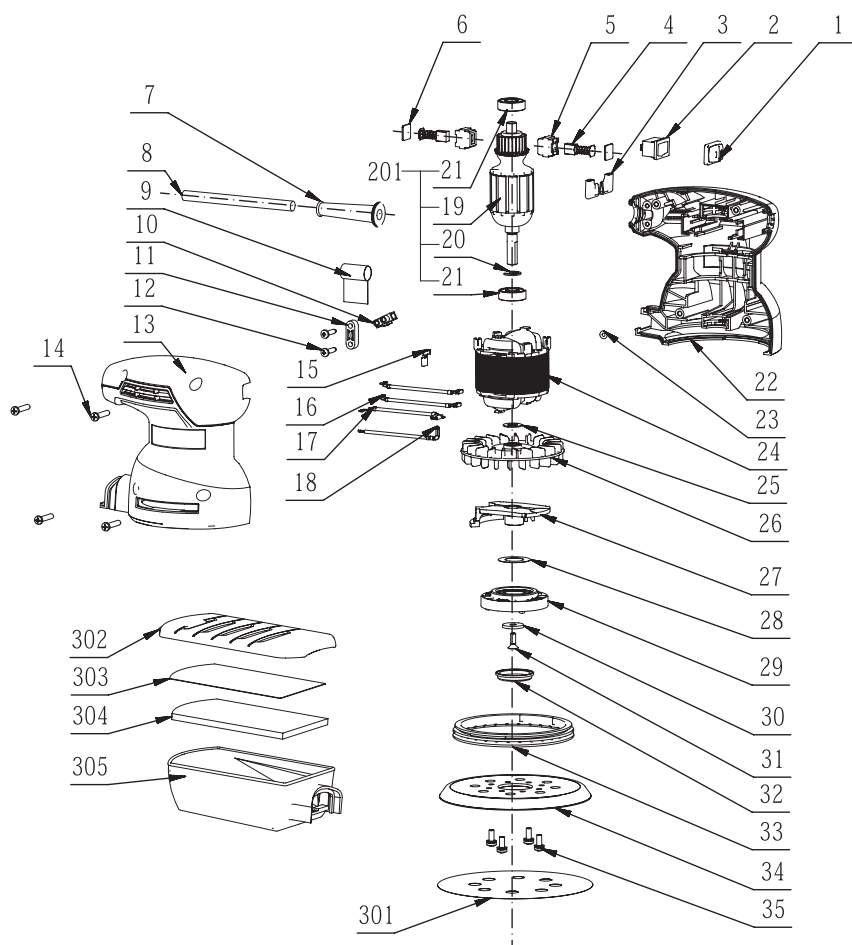
Problem	Possible Causes	Solution
The sander does not start	Not connected to power source	Plug the sander into a power source
Unsatisfactory sanding result	Sandpaper is worn	Replace with new sandpaper
	Sandpaper is not suitable for the workpiece	Use correct sandpaper

If the problem remains unsolved after performing the checks described above, call the toll-free helpline at 1-800-689-9928.

**WARNING!**

- Collected sanding dust from sanding surface coatings such as polyurethanes, linseed oil, etc., can self-ignite in the sander dust box or elsewhere and cause fire. To reduce the risk of fire, always empty the dust box frequently while sanding and never store or leave a sander without totally emptying its dust box. Also follow the recommendations of the coating manufacturers.

EXPLODED VIEW



No.	Part No.	Description
1	3127055000	Switch cover
2	4870051000	Switch
3	4930008000	Sleeve
4	4960273000	Carbon brush
5	2800176000	Brush holder
6	3700490000	Epoxy board
7	3121011000	Cord guard
8	4810002000	Power cord and plug
9	2490136000	Nylon string
10	4930004000	Connector
11	3120234000	Cord anchorage
12	5610024000	Tapping screw
13	3126493000	Right housing
14	5610106000	Tapping screw
15	4930041000	Receptacle
16	4860298000	Internal wire assembly
17	4860302000	Internal wire assembly
18	4860299000	Internal wire assembly
201	2824316000	Rotor set
19	2751034000	Rotor
20	5660029000	E ring

No.	Part No.	Description
21	5700008000	Ball bearing
22	3126439000	Left housing
23	5690013000	O ring
24	2740099000	Stator
25	3700415001	Gasket
26	3402301000	Dust fan
27	3421477000	Counterweight
28	5650041000	Plain washer
29	3402638000	Bearing support assembly
30	3700090000	Washer
31	5620069000	Screw
32	3127058000	Bearing clamp
33	3127158000	Brake ring
34	2823602000	Base pad
35	5620342000	Screw with washer
301	3810300000	Sanding paper
300	2821986000	Dust box assembly
303	3700979000	Dust filter paper
304	3700981000	Sponge
305	3121373000	Dust box

If any parts are missing or damaged, or if you have any questions, please call the toll-free helpline, at 1-800-689-9928.



This Mastercraft product is guaranteed for a period of **3 years from the date of original retail purchase** against defects in workmanship and materials, except for the following components:

- a) Component A: Batteries, chargers and carrying case, which are guaranteed for a period of 2 years from the date of original retail purchase against defects in workmanship and materials;
- b) Component B: Accessories, which are guaranteed for a period of 1 year from the date of original retail purchase against defects in workmanship and materials.

Subject to the conditions and limitations described below, this product, if returned to us with proof of purchase within the stated warranty period and if covered under this warranty, will be repaired or replaced (with the same model, or one of equal value or specification), at our option. We will bear the cost of any repair or replacement and any costs of labour relating thereto.

These warranties are subject to the following conditions and limitations:

- a) a bill of sale verifying the purchase and purchase date must be provided;
- b) this warranty will not apply to any product or part thereof which is worn or broken or which has become inoperative due to abuse, misuse, accidental damage, neglect or lack of proper installation, operation or maintenance (as outlined in the applicable owner's manual or operating instructions) or which is being used for industrial, professional, commercial or rental purposes;
- c) this warranty will not apply to normal wear and tear or to expendable parts or accessories that may be supplied with the product that are expected to become inoperative or unusable after a reasonable period of use;
- d) this warranty will not apply to routine maintenance and consumable items such as, but not limited to, fuel, lubricants, vacuum bags, blades, belts, sandpaper, bits, fluids, tune-ups or adjustments;
- e) this warranty will not apply where damage is caused by repairs made or attempted by others (i.e. persons not authorized by the manufacturer);
- f) this warranty will not apply to any product that was sold to the original purchaser as a reconditioned or refurbished product (unless otherwise specified in writing);
- g) this warranty will not apply to any product or part thereof if any part from another manufacturer is installed therein or any repairs or alterations have been made or attempted by unauthorized persons;

- h) this warranty will not apply to normal deterioration of the exterior finish, such as, but not limited to, scratches, dents, paint chips, or to any corrosion or discolouring by heat, abrasive and chemical cleaners; and
- i) this warranty will not apply to component parts sold by and identified as the product of another company, which shall be covered under the product manufacturer's warranty, if any.

Additional Limitations

This warranty applies only to the original purchaser and may not be transferred. Neither the retailer nor the manufacturer shall be liable for any other expense, loss or damage, including, without limitation, any indirect, incidental, consequential or exemplary damages arising in connection with the sale, use or inability to use this product.

Notice to Consumer

This warranty gives you specific legal rights, and you may have other rights, which may vary from province to province. The provisions contained in this warranty are not intended to limit, modify, take away from, disclaim or exclude any statutory warranties set forth in any applicable provincial or federal legislation.

Made in China

Imported by

Mastercraft Canada Toronto, Canada M4S 2B8

