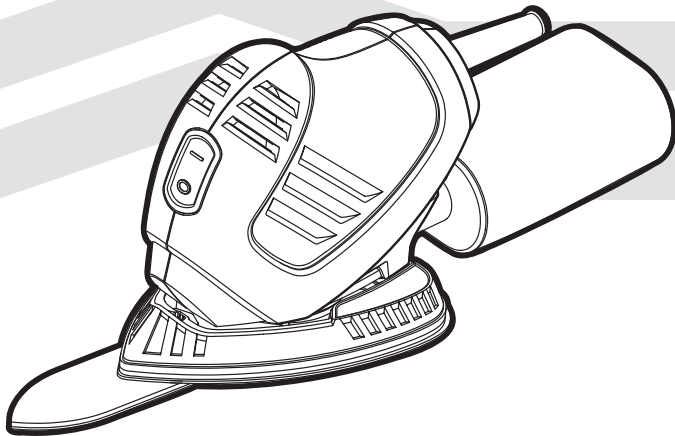


MastercraftTM



INSTRUCTION MANUAL

0.5A DETAIL SANDER

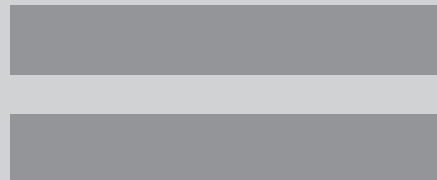
054-7232-8

If any parts are missing or damaged, or if you have any questions, please call our toll-free helpline at 1-800-689-9928.



Read and understand this instruction manual thoroughly before using the product. It contains important information for your safety as well as operating and maintenance advice.

Keep this instruction manual for future use. Should this product be passed on to a third party, then this instruction manual must be included.



TECHNICAL SPECIFICATIONS	3
SAFETY GUIDELINES	4
DESCRIPTION	9
OPERATING INSTRUCTIONS	10
MAINTENANCE	12
TROUBLESHOOTING	13
PARTS LIST	14
WARRANTY	16

MOTOR	120V 60 Hz 0.5A
NO LOAD SPEED	11000 OPM
WEIGHT (WITHOUT BATTERY)	1 lb 8 oz (0.68 kg)
PAD TYPE	Hook and loop fastening system
NOISE LEVEL	Lp:73.2dB(A); Lw: 84.2dB(A)
VIBRATION	$a_{hi} = 4.085 \text{ m/s}^2$; $k=1.5$

**WARNING!**

Safety symbols in this Instruction Manual are used to flag possible dangers. The safety symbols and their explanations require your full understanding. The safety warnings do not, by themselves, eliminate any danger, nor are they substitutes for proper accident prevention measures.

**WARNING!**

This Safety Alert Symbol indicates caution, warning, or danger. Failure to obey a safety warning can result in serious injury to yourself or others. To reduce the risk of injury, fire, or electric shock, always follow the safety precautions.

Know your tool

Carefully read this Instruction Manual and all labels affixed to the detail sander before using it. Keep this available for future reference.

Important

This tool should only be serviced by a qualified service technician. For more information, call the toll-free helpline at 1-800-689-9928.

READ ALL INSTRUCTIONS THOROUGHLY.**SAVE THESE INSTRUCTIONS.****General safety guidelines for power tools****WARNING!**

Read all safety warnings and instructions. Failure to follow the warnings and instructions may result in electric shock, fire and/or serious injury. Save all warnings and instructions for future reference. The term "power tool" in the warnings refers to your mains-operated (corded) power tool or battery-operated (cordless) power tool.

Work area safety

- **Keep the work area clean and well lit.** Cluttered or dark areas invite accidents.
- **Do not operate power tools in explosive atmospheres, such as in the presence of flammable liquids, gases or dust.** Power tools create sparks, which may ignite the dust or fumes.
- **Keep children and bystanders away while operating a power tool.** Distractions can cause you to lose control.

Electrical safety

- **The plug on the power cord must match the outlet.** Never modify the plug in any way. Do not use any adapter plugs with earthed (grounded) power tools. Unmodified plugs and matching outlets will reduce risk of electric shock.
- **Avoid body contact with earthed or grounded surfaces such as pipes, radiators, ranges and refrigerators.** There is an increased risk of electric shock if your body is earthed or grounded.
- **Do not expose power tools to rain or wet conditions.** Water entering a power tool will increase the risk of electric shock.
- **Do not abuse the cord.** Never use the cord for carrying, pulling or unplugging the power tool. Keep cord away from heat, oil, sharp edges or moving parts. Damaged or entangled cords increase the risk of electric shock.
- **When operating a power tool outdoors, use an extension cord suitable for outdoor use.** Use of a cord suitable for outdoor use reduces the risk of electric shock.
- **If operating a power tool in a damp location is unavoidable, use a ground-fault circuit interrupter (GFCI) protected supply.** Use of a GFCI reduces the risk of electric shock.

Personal safety

- **Stay alert, watch what you are doing and use common sense when operating a power tool.** Do not use tool while tired or under the influence of drugs, alcohol, or medication. A moment of inattention while operating power tools may result in serious personal injury.
- **Use personal protective equipment.** Always wear eye protection. Protective equipment such as dust mask, non-skid safety shoes, hard hat, or hearing protection, used for appropriate conditions, will reduce personal injuries.
- **Prevent unintentional starting.** Ensure that the switch is in the off-position before connecting to power source and/or battery pack, picking up or carrying the tool. Carrying power tools with your finger on the switch or plugging in power tools that have the switch on invites accidents.
- **Remove any adjusting key or wrench before turning the power tool on.** A wrench or a key left attached to a rotating part of the power tool may result in personal injury.

- **Do not overreach.** Keep proper footing and balance at all times. This enables better control of the power tool in unexpected situations.
- **Dress properly.** Do not wear loose clothing or jewelry. Keep your hair, clothing and gloves away from moving parts. Loose clothes, jewelry or long hair can be caught in moving parts.
- **If devices are provided for the connection of dust extraction and collection facilities, ensure that these are connected and properly used.** Use of these devices can reduce dust-related hazards.

Power tool use and care

- **Do not force the power tool.** Use the correct power tool for your application. The correct power tool will do the job better and more safely at the rate for which it was designed.
- **Do not use the power tool if the switch does not turn it on and off.** Any power tool that cannot be controlled with the switch is dangerous and must be repaired.
- **Disconnect the plug from the power source and/or the battery pack from the power tool before making any adjustments, changing accessories, or storing power tools.** Such preventive safety measures reduce the risk of starting the power tool accidentally.
- **Store idle power tools out of the reach of children and do not allow persons unfamiliar with the power tool or these instructions to operate the power tool.** Power tools are dangerous in the hands of untrained users.
- **Maintain power tools.** Check for misalignment or binding of moving parts, breakage of parts and any other condition that may affect the power tool's operation. If damaged, have the power tool repaired before use. Many accidents are caused by poorly maintained power tools.
- **Keep cutting tools sharp and clean.** Properly maintained cutting tools with sharp cutting edges are less likely to bind and are easier to control.
- **Use the power tool, accessories, tool bits, etc., in accordance with these instructions, taking into account the working conditions and the work to be performed.** Use of the power tool for operations different from those intended could result in a hazardous situation.

Service

- **Have your power tool serviced by a qualified repair person using only identical replacement parts.** This will ensure that the safety of the power tool is maintained.

Safety guidelines for detail sander

- If an extension cord is required, use a cord with the proper size conductors in order to prevent excessive voltage drop, loss of power, or overheating. The table below shows the correct size to use according to the length of the cord and the nameplate amperage rating of the tool. When in doubt, use the next heavier gauge. Always use UL and CSA listed extension cords.

Recommended size of extension cords

TOOL'S AMPERE RATING (120 V CIRCUIT ONLY)	TOTAL LENGTH OF THE EXTENSION CORD CORD SIZE IN A. W. G. (MINIMUM)			
	25' (7.6 M)	50' (15.2 M)	100' (30.4 M)	150' (45.7 M)
0-6	18	16	16	14
6-8	18	16	14	12

NOTE: AWG = American Wire Gauge

- **Unplug the sander before changing accessories.** Accidental start-up may occur if the sander is plugged in while changing an accessory.
- **This sander is equipped with a dust collection bag.** Empty it frequently during use, after sanding is completed, and before storing the sander.
- **Always wear eye protection and a dust mask for applications that generate dust and when sanding overhead.** Sanded particles can be easily absorbed by the eyes and/or inhaled, and may cause health complications.
- **Do not use this sander for wet sanding.** Liquid entering the motor housing may cause an electric-shock hazard.
- **Do not use sandpaper that is intended for larger sanding pads.** Larger sandpaper will extend beyond the sanding pad, which will cause snagging, tearing of the paper, or kickback. Sandpaper that extends beyond the sanding pad may also cause serious lacerations.
- **Keep the cord away from the oscillating pad and sandpaper.** The cord may become entangled in the pad.

Contents

Detail sander, dust bag, detail sanding attachment, 12 detail sanding sheets (3pcs 80grit; 3pcs 100grit; 3pcs 120grit; 3pcs 240grit), 12 sanding sheets (3pcs 80grit; 3pcs 100grit; 3pcs 120grit, 3pcs 240grit), polishing pad, foam pad, abrasive pad, hex wrench, instruction manual



WARNING!

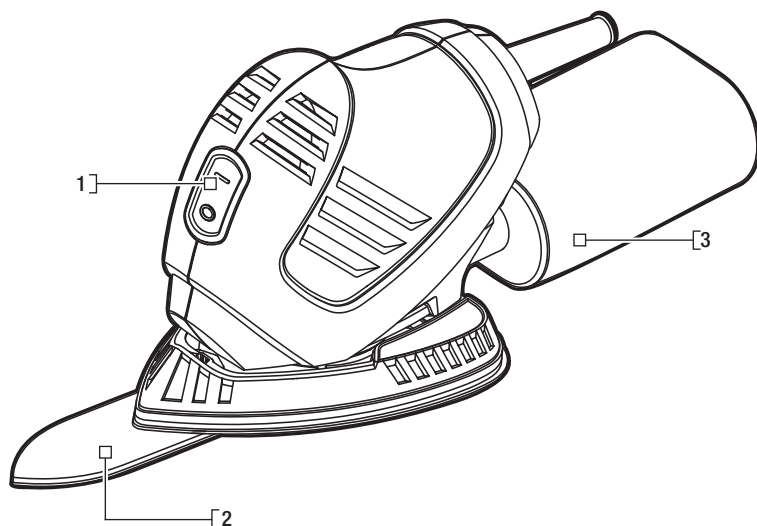
Remove the Detail Sander from the package, and examine it carefully. Do not discard the carton or any packaging material until all parts have been examined.



WARNING!

If any part of the Detail Sander is missing or damaged, do not attach the tool to a power source or use the tool until the part has been repaired or replaced. Failure to heed this warning could result in serious injury.

Know your detail sander



No.	Description	No.	Description
1	Dust sealed On/Off switch	3	Dust collection bag
2	Detail sanding attachment		



WARNING!

Do not allow familiarity with the Detail Sander to cause a lack of alertness. A fraction of a second of carelessness is enough to cause severe injury.

Installing sandpaper

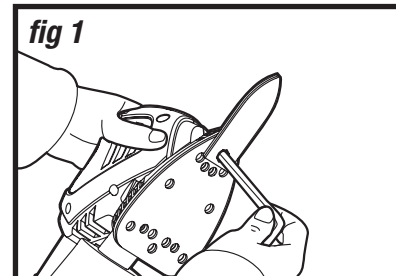
This detail sander uses hook-and-loop backed sandpaper, which grips the pad firmly when it is applied with moderate pressure. To change the sandpaper, simply peel off the old sandpaper, remove the dust from the pad if necessary, and press the new sandpaper into position. Be sure to align the holes in the sanding disc with the holes in the backing pad to allow the dust extraction system to function properly.

Installing the detail sanding attachment (fig 1)

The detail sanding attachment is used for fine detail sanding.

- Remove the sandpaper from the base.
- Fit the detail sanding attachment onto the sanding base.
- Tighten the screw with the hex wrench (included).

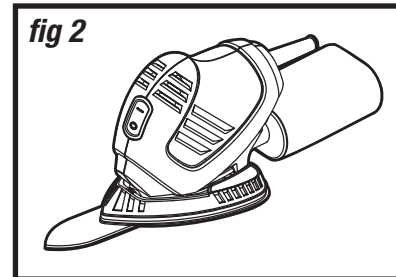
fig 1



Turning the sander on and off (fig 2)

Insert the plug from the sander's power cord into a standard household outlet. Start the sander by pushing the "On/Off" switch to the "1" position. Turn the sander off by pushing the "On/Off" switch to the "0" position.

fig 2



Dust collection

This detail sander is equipped with a dust-collection bag to help keep the working surface clean. The dust collection bag must be installed in the collection port that is located at the rear of the sander. For best results, the dust collection bag should be emptied frequently, following these steps:

Remove the dust collection bag from the collection opening, empty it, and then place it back in position in the collection port.

Selecting the proper accessory

ACCESSORY	RECOMMENDED APPLICATIONS
Coarse Grit (60–80)	Initial sanding of rougher surfaces. Fast removal of stock. Rough sanding and stripping of painted and rusted surfaces.
Medium Grit (100–140)	Intermediate sanding. Removal of minor surface imperfections.
Fine Grit (150–220)	Fine sanding. Sanding prior to staining, priming, or sealing.
Polishing Pad	Fine polishing, satin finish on paint/varnish.
Foam Pad	Applying and removing polish.
Abrasive Pad	Scrubbing.

Do not switch from a coarse grit to a very fine grit in one step, because it may be difficult to remove the marks made by the coarse grit. Use the coarsest grits for the roughing operation, and finish by using successively finer grits.

General maintenance

**WARNING!**

To avoid personal injury, always unplug the tool when cleaning or performing any maintenance.

**WARNING!**

Do not let brake fluids, gasoline, petroleum-based products, penetrating oil, etc., come into contact with plastic parts. These substances contain chemicals that can damage, weaken, or destroy plastic.

The tool may be cleaned most effectively with compressed dry air. Always wear safety goggles when cleaning tools with compressed air. Before each use:

- Inspect the tool, the trigger switch, and the cord for damage.
- Check for damaged, missing, or worn parts.
- Check for loose screws, misalignment or binding of moving parts, or any other condition that may affect the operation.
- If abnormal vibration or noise occurs, turn the cordless tool off immediately, and have the problem corrected before further use.

**WARNING!**

When servicing, use only identical replacement parts. The use of any other parts may create a hazard or cause damage to the product.

**WARNING!**

Use only accessories that are recommended for this sander by the manufacturer. Accessories that may be suitable for one tool may become hazardous when used with another tool.

**WARNING!**

To ensure safety and reliability, all repairs should be performed by a qualified service technician.

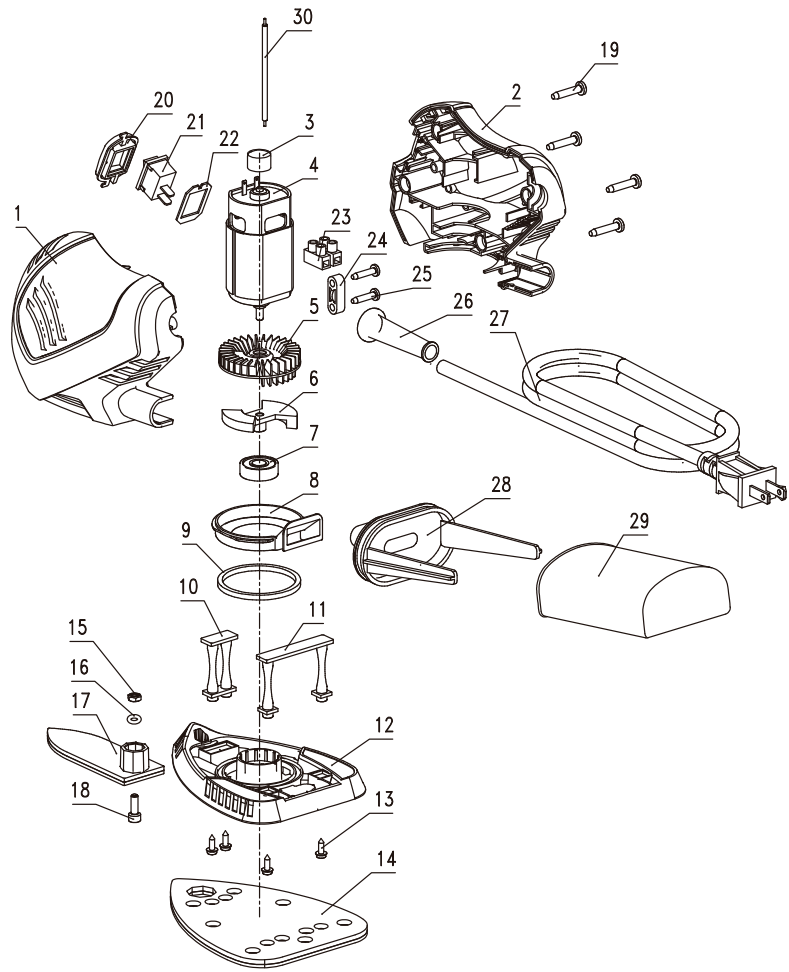
**WARNING!**

If the supply cord is damaged, it must be replaced by a specially prepared cord available through the service organization.

PROBLEM	POSSIBLE CAUSES	SOLUTIONS
The motor is overheating.	Be sure the cooling vents are free from dust and obstacles.	Clean, and clear the vents. Do not cover the vents with your hand during operation.

If the problem remains unsolved after performing the checks described above, call the toll-free helpline at 1-800-689-9928.

Exploded view



No.	Part No.	Description
01	3320522000	Left Housing
02	3320523000	Right Housing
03	3123778000	Dust Cap
04	2730128000	DC Motor
05	3123537000	Dust Fan
06	3520319000	Counterweight
07	5700008000	Ball Bearing 608
08	3123538000	Fan Baffle
09	3704013000	Felt Ring
10	3120370000	Front Pad Support
11	3120362000	Rear Pad Support
12	3123540000	Base Plate
13	3700137000	Flange Screw
14	3704011000	Soft Pad
15	5630001000	Hexagon Nut M4
16	5690150000	O Ring
17	2822337000	Detail Sanding Attachment
18	5620011000	Hexagon Socket Screw M4x12
19	5610033000	Tapping Screw 4x20
20	3123539000	Switch Cover
21	4870053000	Switch
22	3700577000	Fixing Board
23	4930004000	Connector
24	3120234000	Cord Anchorage
25	5610024000	Tapping Screw ST3.5x16
26	3121011000	Cord Guard
27	4810002000	Power Cord & Plug
28	3121362000	Dust Bracket
29	3800001000	Dust Bag
30	4860006000	Inner Wire



This Mastercraft product is guaranteed three (3) years from the date of original retail purchase against defects in materials and workmanship, except for the following components:

- a) Component A: Batteries, chargers and carrying case, which are guaranteed for a period of 2 years from the date of original retail purchase against defects in workmanship and materials;
- b) Component B: Accessories, which are guaranteed for a period of 1-year from the date of original retail purchase against defects in workmanship and materials.

Subject to the conditions and limitations described below, this product, if returned to us with proof of purchase within the stated warranty period and if covered under this warranty, will be repaired or replaced (with the same model, or one of equal value or specification), at our option. We will bear the cost of any repair or replacement and any costs of labour relating there to.

These warranties are subject to the following conditions and limitations:

- a) a bill of sale verifying the purchase and purchase date must be provided;
- b) this warranty will not apply to any product or part thereof which is worn or broken or which has become inoperative due to abuse, misuse, accidental damage, neglect or lack of proper installation, operation or maintenance (as outlined in the applicable owner's manual or operating instructions) or which is being used for industrial, professional, commercial or rental purposes;
- c) this warranty will not apply to normal wear and tear or to expendable parts or accessories that may be supplied with the product which are expected to become inoperative or unusable after a reasonable period of use;
- d) this warranty will not apply to routine maintenance and consumable items such as, but not limited to, fuel, lubricants, vacuum bags, blades, belts, sandpaper, bits, fluids, tune-ups or adjustments;
- e) this warranty will not apply where damage is caused by repairs made or attempted by others (i.e. persons not authorized by the manufacturer);
- f) this warranty will not apply to any product that was sold to the original purchaser as a reconditioned or refurbished product (unless otherwise specified in writing);
- g) this warranty will not apply to any product or part thereof if any part from another manufacturer is installed therein or any repairs or alterations have been made or attempted by unauthorized persons;
- h) this warranty will not apply to normal deterioration of the exterior finish, such as, but not limited to, scratches, dents, paint chips, or to any corrosion or discolouring by heat, abrasive and chemical cleaners; and

i) this warranty will not apply to component parts sold by and identified as the product of another company, which shall be covered under the product manufacturer's warranty, if any.

Additional Limitations

This warranty applies only to the original purchaser and may not be transferred. Neither the retailer nor the manufacturer shall be liable for any other expense, loss or damage, including, without limitation, any indirect, incidental, consequential or exemplary damages arising in connection with the sale, use or inability to use this product.

Notice to Consumer

This warranty gives you specific legal rights, and you may have other rights, which may vary from province to province. The provisions contained in this warranty are not intended to limit, modify, take away from, disclaim or exclude any statutory warranties set forth in any applicable provincial or federal legislation.

IMPORTED BY MASTERCRAFT CANADA TORONTO, CANADA M4S 2B8