

MAXIMUM™

4 1/2" (11.4 cm)

Heavy-duty Angle Grinder



Model no. 054-7157-8

IMPORTANT:

Please read this manual carefully before using this product, and save it for reference.

**INSTRUCTION
MANUAL**

TABLE OF CONTENTS

TECHNICAL SPECIFICATIONS	4
GENERAL POWER TOOL SAFETY WARNINGS	5
SAFETY INSTRUCTIONS FOR ALL OPERATIONS	8
SYMBOLS	11
KEY PARTS DIAGRAM	12
ACCESSORIES	13
PARTS LIST	14
OPERATING INSTRUCTIONS	16
WORKING HINTS FOR YOUR ANGLE GRINDER	19
TROUBLESHOOTING	20
MAINTAIN TOOLS WITH CARE	21
WARRANTY	22

NOTE: If any parts are missing or damaged, or if you have any questions, please call our toll-free helpline at 1-888-670-6682.



SAVE THESE INSTRUCTIONS

This manual contains important safety and operating instructions. Read all instructions and follow them with use of this product.

TECHNICAL SPECIFICATIONS

VOLTAGE	120 V 60 Hz AC
AMPS	7 A
NO-LOAD SPEED	11, 000 RPM
MAXIMUM DISC DIAMETER	4 1/2" (11.4 cm)
ARBOUR SIZE	7/8" (2.2 cm)
SPINDLE THREAD	5/8" (1.6 cm)
PROTECTION CLASS	□ /II
CORD LENGTH	10' (3 m)
MACHINE WEIGHT	4 lb 12 oz (2.16 kg)

WORK AREA SAFETY

- **Keep work area clean and well lit.** Cluttered or dark areas invite accidents.
- **Do not operate power tools in explosive atmospheres, such as in the presence of flammable liquids, gases or dust.** Power tools create sparks which may ignite the dust or fumes.
- **Keep children and bystanders away while operating a power tool.** Distractions can cause you to lose control.



WARNING!

Some dust created by power sanding, sawing, grinding, drilling and other construction activities contains chemicals known to cause cancer, birth defects or other reproductive harm. Some examples of these chemicals are:

- Lead from lead-based paints.
- Crystalline silica from bricks and cement and other masonry products.
- Arsenic and chromium from chemically-treated lumber.

Your risk from these exposures varies, depending on how often you do this type of work. To reduce your exposure to these chemicals, work in a well-ventilated area, and work with approved safety equipment, such as those dust masks that are specially designed to filter out microscopic particles.



WARNING!

This product may contain lead, phthalates or other chemicals known to cause cancer, birth defects and other reproductive harm. Please wash your hands after use.



WARNING!

Read all safety warnings and instructions. Failure to follow the warnings and instructions may result in electric shock, fire and/or serious injury.

Save all warnings and instructions for future reference.

- The term power tool in the warnings refers to your electric (corded) power tool or battery-operated (cordless) power tool.

ELECTRICAL SAFETY

- **Power tool plugs must match the outlet. Never modify the plug in any way.** Do not use any adapter plugs with grounded power tools. Unmodified plugs and matching outlets will reduce risk of electric shock.
- **Avoid body contact with grounded surfaces such as pipes, radiators, ranges and refrigerators.** There is an increased risk of electric shock if your body is grounded.
- **Do not expose power tools to rain or wet conditions.** Water entering a power tool will increase the risk of electric shock.
- **Do not abuse the cord. Never use the cord for carrying, pulling or unplugging the power tool.** Keep cord away from heat, oil, sharp edges or moving parts. Damaged or entangled cords increase the risk of electric shock.
- **When operating a power tool outdoors, use an extension cord suitable for outdoor use.** Use of a cord suitable for outdoor use reduces the risk of electric shock.
- **If operating a power tool in a damp location is unavoidable, use a residual current device (RCD) protected supply.** Use of an RCD reduces the risk of electric shock.

PERSONAL SAFETY

- **Stay alert, watch what you are doing and use common sense when operating a power tool.** Do not use a power tool while you are tired or under the influence of drugs, alcohol or medication. A moment of inattention while operating power tools may result in serious personal injury.
- **Use personal protective equipment. Always wear eye protection.** Protective equipment such as dust mask, non-skid safety shoes, hard hat, or hearing protection used for appropriate conditions will reduce personal injuries.
- **Prevent unintentional starting. Ensure the switch is in the off-position before connecting to power source and/or battery pack, picking up, or carrying the tool.** Carrying power tools with your finger on the switch or energizing power tools that have the switch on invites accidents.
- **Remove any adjusting key or wrench before turning the power tool on.** A wrench or a key left attached to a rotating part of the power tool may result in personal injury.
- **Do not overreach. Keep proper footing and balance at all times.** This enables better control of the power tool in unexpected situations.
- **Dress properly. Do not wear loose clothing or jewellery.** Keep your hair, clothing and gloves away from moving parts. Loose clothes, jewellery or long hair can be caught in moving parts.
- **If devices are provided for the connection of dust extraction and collection facilities, ensure these are connected and properly used.** Use of dust collection can reduce dust-related hazards.

POWER TOOL USE AND CARE

- **Do not force the power tool. Use the correct power tool for your application.** The correct power tool will do the job better and safer at the rate for which it was designed.

- **Do not use the power tool if the switch does not turn it on and off.** Any power tool that cannot be controlled with the switch is dangerous and must be repaired.
- **Disconnect the plug from the power source and/or the battery pack from the power tool before making any adjustments, changing accessories, or storing power tools.** Such preventive safety measures reduce the risk of starting the power tool accidentally.
- **Store idle power tools out of the reach of children and do not allow persons unfamiliar with the power tool or these instructions to operate the power tool.** Power tools are dangerous in the hands of untrained users.
- **Maintain power tools.** Check for misalignment or binding of moving parts, breakage of parts and any other condition that may affect the power tool's operation. If damaged, have the power tool repaired before use. Many accidents are caused by poorly maintained power tools.
- **Keep cutting tools sharp and clean.** Properly maintained cutting tools with sharp cutting edges are less likely to bind and are easier to control.
- **Use the power tool, accessories and tool bits etc., in accordance with these instructions and in the manner intended for the particular type of power tool, taking into account the working conditions and the work to be performed.** Use of the power tool for operations other than those intended could result in a hazardous situation.

SERVICE

- **Have your power tool serviced by a qualified repair person using only identical replacement parts.** This will ensure that the safety of the power tool is maintained.

SAFETY INSTRUCTIONS FOR ALL OPERATIONS

Safety Warnings Common for Grinding or Abrasive Cutting-Off Operations:

- This power tool is intended to function as a grinder or cut-off tool. Read all safety warnings, instructions, illustrations and specifications provided with this power tool. Failure to follow all instructions listed below may result in electric shock, fire and/or serious injury.
- Operations such as sanding, wire brushing, polishing are not recommended to be performed with this power tool. Operations for which the power tool was not designed may create a hazard and cause personal injury.
- Do not use accessories which are not specifically designed and recommended by the tool manufacturer. Just because the accessory can be attached to your power tool does not assure safe operation.
- The rated speed of the accessory must be at least equal to the maximum speed marked on the power tool. Accessories running faster than their rated speed can break and fly apart.
- The outside diameter and the thickness of your accessory must be within the capacity rating of your power tool. Incorrectly sized accessories cannot be adequately guarded or controlled.
- The arbour size of wheels, flanges, backing pads or any other accessory must properly fit the spindle of the power tool. Accessories with arbour holes that do not match the mounting hardware of the power tool will run out of balance or vibrate excessively and may cause loss of control.
- Do not use a damaged accessory. Before each use inspect the accessory: abrasive wheels for chips and cracks, backing pad for cracks; tear or excess wear; or wire brush for loose or cracked wires. If power tool or accessory is dropped, inspect for damage or install an undamaged accessory. After inspecting and installing an accessory, position yourself and bystanders away from the plane of the rotating accessory and run the power tool at maximum no-load speed for one minute. Damaged accessories will normally break apart during this test time.
- Wear personal protective equipment. Depending on application, use face shield, safety goggles or safety glasses. As appropriate, wear dust mask, hearing protectors, gloves and workshop apron capable of stopping small abrasive or workpiece fragments. The eye protection must be capable of stopping flying debris generated by various operations. The eye protection must be capable of stopping flying debris generated by various operations. The dust mask or respirator must be capable of filtering particles generated by your operation. Prolonged exposure to high-intensity noise may cause hearing loss.
- Keep bystanders a safe distance away from work area. Anyone entering the work area must wear personal protective equipment. Fragments of workpiece or of a broken accessory may fly away and cause injury beyond immediate area of operation.
- Hold power tool by insulated gripping surfaces only when performing an operation where the cutting accessory may contact hidden wiring or its own cord. Cutting accessory contacting a live wire may make exposed metal parts of the power tool live and shock the operator.

- Position the cord clear of the spinning accessory. If you lose control, the cord may be cut or snagged and your hand or arm may be pulled into the spinning accessory.
- Never lay the power tool down until the accessory has come to a complete stop. The spinning accessory may grab the surface and pull the power tool out of your control.
- Do not run the power tool while carrying it at your side. Accidental contact with the spinning accessory could snag your clothing, pulling the accessory into your body.
- Regularly clean the power tool's air vents. The motor's fan will draw the dust inside the housing and excessive accumulation of powdered metal may cause electrical hazards.
- Do not operate the power tool near flammable materials. Sparks could ignite these materials.
- Do not use accessories that require liquid coolants. Using water or other liquid coolants may result in electrocution or shock.

KICKBACK AND RELATED WARNINGS:

Kickback is a sudden reaction to a pinched or snagged rotating wheel, backing pad, brush or any other accessory. Pinching or snagging causes rapid stalling of the rotating accessory which in turn causes the uncontrolled power tool to be forced in the direction opposite of the accessory's rotation at the point of the binding. For example, if an abrasive wheel is snagged or pinched by the workpiece, the edge of the wheel that is entering into the pinch point can dig into the surface of the material causing the wheel to climb out or kick out. The wheel may either jump toward or away from the operator, depending on direction of the wheel's movement at the point of pinching. Abrasive wheels may also break under these conditions. Kickback is the result of power tool misuse and/or incorrect operating procedures or conditions and can be avoided by taking proper precautions as given below.

- Maintain a firm grip on the power tool and position your body and arm to allow you to resist kickback forces. Always use auxiliary handle, if provided, for maximum control over kickback or torque reaction during start-up. The operator can control torque reactions or kickback forces, if proper precautions are taken.
- Never place your hand near the rotating accessory. Accessory may kickback over your hand.
- Do not position your body in the area where power tool will move if kickback occurs. Kickback will propel the tool in direction opposite to the wheel's movement at the point of snagging.
- Use special care when working corners, sharp edges etc. Avoid bouncing and snagging the accessory. Corners, sharp edges or bouncing have a tendency to snag the rotating accessory and cause loss of control or kickback.
- Do not attach a saw chain, woodcarving blade or toothed saw blade. Such blades create frequent kickback and loss of control.

SAFETY WARNINGS SPECIFIC FOR GRINDING AND ABRASIVE CUTTING-OFF OPERATIONS:

- Use only wheel types that are recommended for your power tool and the specific guard designed for the selected wheel. Wheels for which the power tool was not designed cannot be adequately guarded and are unsafe.
- The guard must be securely attached to the power tool and positioned for maximum safety, so the least amount of wheel is exposed towards the operator. The guard helps to protect operator from broken wheel fragments and accidental contact with wheel.
- Wheels must be used only for recommended applications. For example: do not grind with the side of cut-off wheel. Abrasive cut-off wheels are intended for peripheral grinding, side forces applied to these wheels may cause them to shatter.
- Always use undamaged wheel flanges that are of correct size and shape for your selected wheel. Proper wheel flanges support the wheel thus reducing the possibility of wheel breakage. Flanges for cut-off wheels may be different from grinding wheel flanges.
- Do not use worn down wheels from larger power tools. A wheel intended for a larger power tool is not suitable for the higher speed of a smaller tool and may burst.

ADDITIONAL SAFETY WARNINGS SPECIFIC FOR ABRASIVE CUTTING-OFF OPERATIONS:

- Do not jam the cut-off wheel or apply excessive pressure. Do not attempt to make an excessive depth of cut. Overstressing the wheel increases the load and susceptibility to twisting or binding of the wheel in the cut and the possibility of kickback or wheel breakage.
- Do not position your body in line with and behind the rotating wheel. When the wheel, at the point of operation, is moving away from your body, the possible kickback may propel the spinning wheel and the power tool directly at you.
- When wheel is binding or when interrupting a cut for any reason, switch off the power tool and hold the power tool motionless until the wheel comes to a complete stop. Never attempt to remove the cut-off wheel from the cut while the wheel is in motion otherwise kickback may occur. Investigate and take corrective action to eliminate the cause of wheel binding.
- Do not restart the cutting operation in the workpiece. Let the wheel reach full speed and carefully reenter the cut. The wheel may bind, walk up or kickback if the power tool is restarted in the workpiece.
- Support panels or any oversized workpiece to minimize the risk of wheel pinching and kickback. Large workpieces tend to sag under their own weight. Supports must be placed under the workpiece near the line of cut and near the edge of the workpiece on both sides of the wheel.
- Use extra caution when making a "pocket cut" into existing walls or other blind areas. The protruding wheel may cut gas or water pipes, electrical wiring or objects that can cause kickback.

SYMBOLS



To reduce the risk of injury, user must read instruction manual



Double insulation



Warning



Wear ear protection



Wear eye protection



Wear dust mask



Don't use in the rain



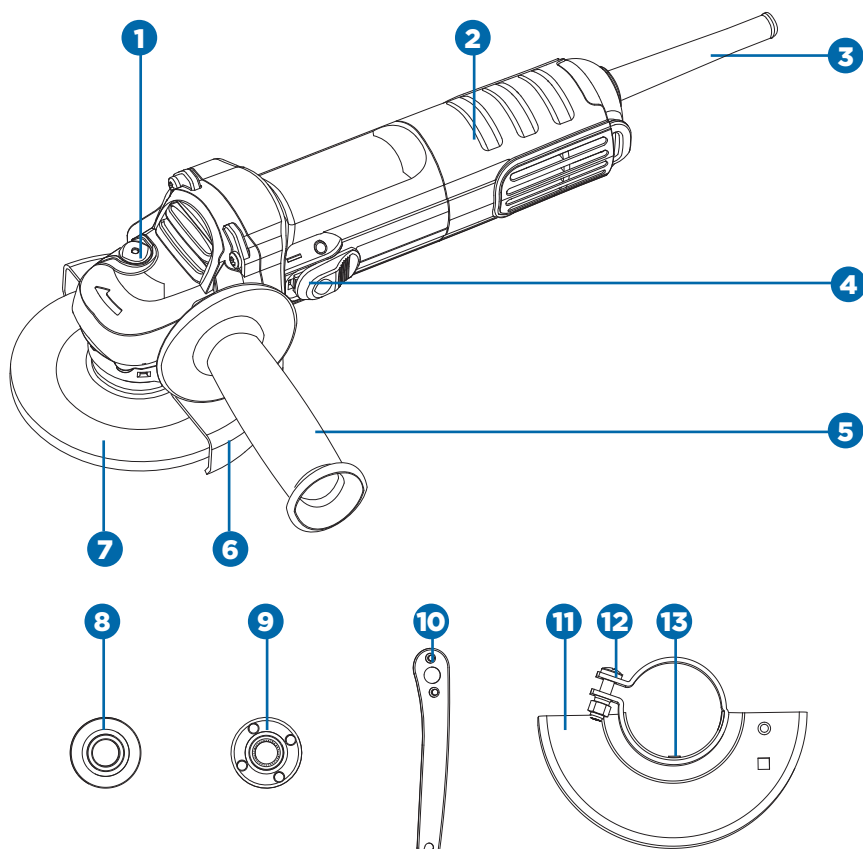
Wear gloves



Do not washing

No.	Description
1	Spindle lock button
2	Hand grip areas
3	Power cable
4	On/off switch
5	Auxiliary handle
6	Wheel guard for grinding
7	Metal grinding disc

No.	Description
8	Inner flange
9	Outer flange
10	Wrench
11	Wheel guard for cutting*
12	Clamping screw of guard
13	Coded projection

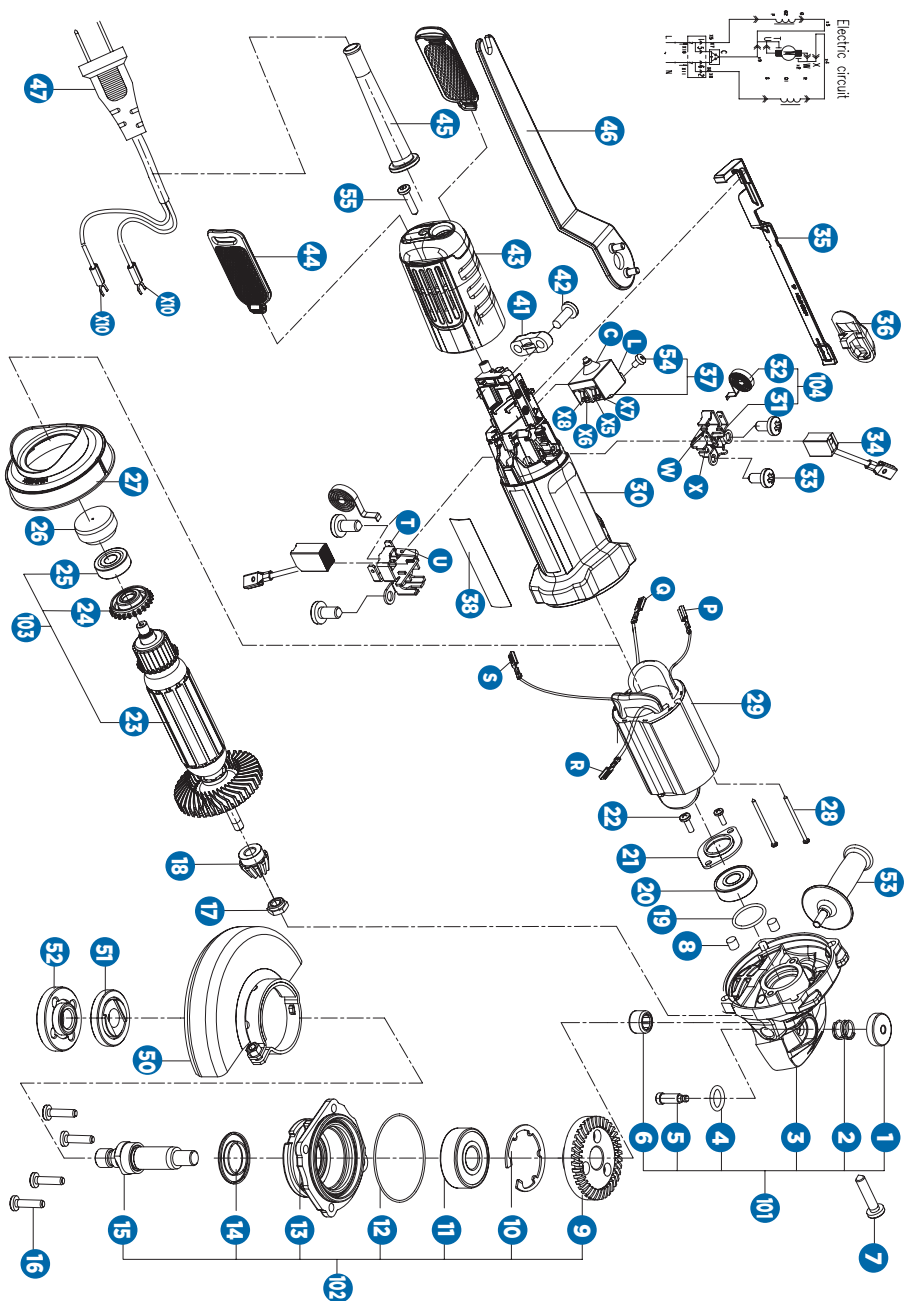


* Not all the accessories illustrated or described are included in standard delivery.

ACCESSORIES

Wrench	1
Anti-vibration auxiliary handle	1
Wheel guard for grinding	1
Metal grinding disc	1

We recommend that you purchase your accessories from the same store that sold you the tool. Use good quality accessories marked with a well-known brand name. Choose the type according to the work you intend to undertake. Refer to the accessory packaging for further details. Store personnel can assist you and offer advice.

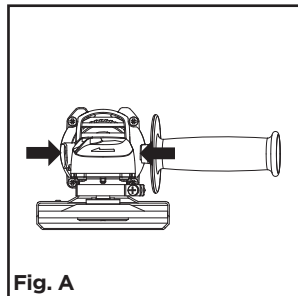


No.	Description
1	Spindle lock cap
2	Compression spring
3	Fore housing
4	O-ring
5	Shaft
6	Bearing HK081210
7	Screw ST4.2X19
8	Felt seal
9	Gear
10	Retaining ring
11	Bearing 6201
12	Seal ring
13	Fore cover
14	Washer
15	Spindle
16	Screw M4X16
17	Nut M6
18	Pinion
19	O-ring
20	Bearing 608
21	Bearing cover
22	Screw M4X12
23	Rotor
24	Dust-proof ring
25	Bearing 607
26	Sleeve
27	Wind-baffle ring
28	Screw ST4.2X75
29	Stator

No.	Description
30	Housing body
31	Brush holder
32	Spiral spring
33	Screw ST3.5X8
34	Carbon brush (pair)
35	Switch lever
36	Trigger
37	Switch
38	Rated label
41	Cord clamp
42	Screw ST4.2X13
43	Back cover
44	Dust-proof cover
45	Cable protector
46	Spanner
47	Power cord
50	Guard set
51	Inner flange
52	Outer flange
53	Anti-vibration handle
54	Screw M3.5X5
55	Screw ST4.2X13
101	Gear housing
102	Gear cover assmebly
103	Rotor set
104	Brush bracket assmebly

ADJUSTABLE AUXILIARY HANDLE (Fig. A)

You have the option of two working positions to provide the safest and most comfortable control of your angle grinder. The auxiliary handle is screwed clockwise into either hole on the sides of the gear case.

**Fig. A****GUARD ADJUSTMENT (Fig. B, C)**

Before any work on the machine, pull the mains plug out.

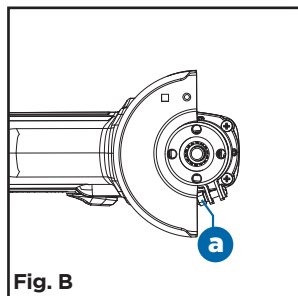
For work with grinding or cutting discs, the wheel guard must be mounted.

Mount wrench to nut (a) and loosen the clamping screw (12).

Place the protection guard (6 or 12) with coded projection (13) into the coded groove on the spindle collar of the machine head and rotate to the required position (working position).

The closed side of the protection guard must always point to the operator.

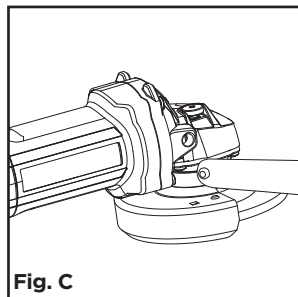
Tighten clamping screw (12).

**Fig. B****WHEEL GUARD FOR GRINDING OPERATION**

Switch grinder off and pull the plug out. Never operate grinder without guard in place.

Adjust the guard to protect your hands and to direct grind debris. Loosen the clamping screw (12), adjust the guard at the required angle. Then tighten the clamping screw.

To move the guard you must release the clamping lever (13). The guard can then be rotated to provide maximum protection against sparks and debris. Finally, tighten the clamping screw until it touches the gear case.

**Fig. C**

NOTE: Before using the tool, read the instruction book carefully.

**WARNING!**

For cutting metal, always work with the wheel guard for cutting (11).

WHEEL GUARD FOR CUTTING OPERATION

The wheel guard for cutting (11, no supplied) is mounted in the same manner as the wheel guard for grinding (6).

DISC MOUNTING (Fig. D1, D2)

The inner flange (8) is located over the spindle and on the two spindle flats. Place the disc onto the inner flange and then screw the outer flange (9) onto the spindle. Press the spindle locking button and firmly tighten the outer flange with supplied wrench to clamp the disc. The pins on the wrench are inserted in the holes on the outer flange. Check that the disc rotates freely and is securely clamped. Make a no-load test run for 20 seconds to check disc vibration and disc stability. To remove a disc, reverse these instructions.

ADJUSTABLE OUTER FLANGE CLAMPING (Fig. D3)

The outer flange (9) should be adjusted to suit different disc thickness. For thinner cutting or diamond discs (b, no supplied) the raised part of the outer flange is fitted facing away from the disc. For thicker grinding discs the raised part of the outer flange is fitted facing the disc to provide improved support for the disc hole. Always ensure your disc is securely clamped.

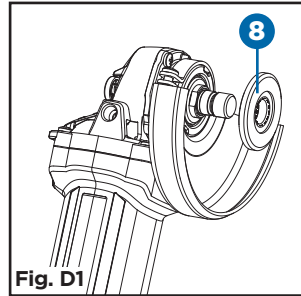


Fig. D1

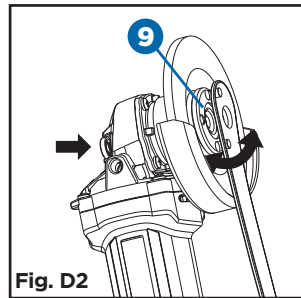


Fig. D2

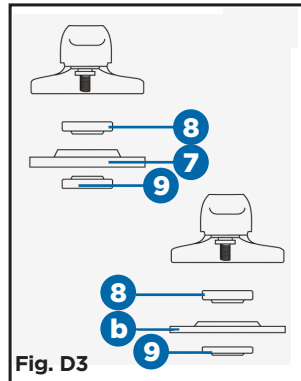


Fig. D3



WARNING!

Never change the direction of rotation when the tool is rotating. Wait until it has stopped.

ON/OFF SWITCH (Fig. E)

Slide the switch forward to start your tool and lock your tool for continuous working. To switch off your tool, depress the rear of the spring-loaded switch.

TO USE THE GRINDER (Fig. F)

Attention: Do not switch the grinder on whilst the disc is in contact with the workpiece. Allow the disc to reach full speed before starting to grind.

Hold your angle grinder with one hand on the main handle and other hand firmly around the auxiliary handle.

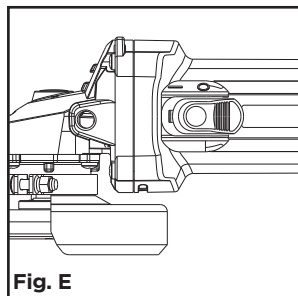
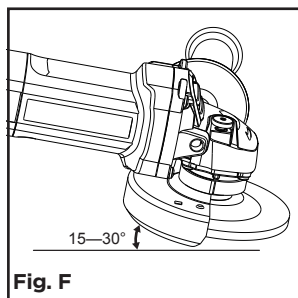
Always position the guard so that as much of the exposed disc as possible is pointing away from you.

Be prepared for a stream of sparks when the disc touches the metal.

For best tool control, material removal and minimum overloading, maintain an angle between the disc and work surface of approximately 15–30° when grinding.

Use caution when working into corners as contact with the intersecting surface may cause the grinder to jump or twist.

When grinding is complete allow the workpiece to cool. Do not touch the hot surface.

**Fig. E****Fig. F**

WORKING HINTS FOR YOUR GRINDER

- Your angle grinder is useful for both cutting through metals, i.e. for removing screw heads, and also for cleaning/preparing surfaces, i.e. before and after welding operations.
- Different types of wheel/cutter will allow the grinder to meet various needs. Typically, wheels/cutters are available for mild steel, stainless steel, stone and brick. Diamond-impregnated discs are available for very hard materials.
- If the grinder is used on soft metals such as aluminum, the wheel will soon clog and will have to be changed.
- At all times, let the grinder do the work. Do not force it or apply excessive pressure to the wheel/disc.
- If cutting a slot, ensure that the cutter is kept aligned with the slot. Twisting the cutter may cause the disc to shatter. If cutting through thin sheet, only penetrate enough to facilitate the cut. Excessive penetration can increase the chance of causing damage.
- If cutting stone or brick, it is advisable to use a dust extractor.

TROUBLESHOOTING

Although your new angle grinder is really very simple to operate, if you do experience problems, please check the following:

- If your grinder will not operate check the power at the main plug.
- If your grinder wheel wobbles or vibrates, check that outer flange is tight, check that the wheel is correctly located on the flange plate.
- If there is any evidence that the wheel is damaged do not use as the damaged wheel may disintegrate. Remove it and replace with a new wheel. Dispose of old wheels sensibly.
- If working on aluminum or a similar soft alloy, the wheel will soon become clogged and will not grind effectively.
- If a fault can not be rectified, return the tool to an authorized dealer or its service agent for repair.

MAINTAIN TOOLS WITH CARE

Remove the plug from the socket before carrying out any adjustment, servicing or maintenance.

Your power tool requires no additional lubrication or maintenance. There are no user-serviceable parts in your power tool. Never use water or chemical cleaners to clean your power tool. Wipe clean with a dry cloth. Always store your power tool in a dry place. Keep the motor ventilation slots clean. Keep all working controls free of dust. Occasionally you may see sparks through the ventilation slots. This is normal and will not damage your power tool.

If the supply cord is damaged, it must be replaced by the manufacturer, its service agent or similarly-qualified persons in order to avoid a hazard.

This MAXIMUM product is guaranteed for a period of 5 years from the date of original retail purchase against defects in workmanship and materials only and is subject to the following components:

- a) Component A: Batteries/chargers can be repaired or replaced due to defects in workmanship and materials for a period of 3 years from the date of original retail purchase;
- b) Component B: The carrying case is guaranteed for a period of 1-year from the date of original retail purchase against defects in workmanship and materials.
- c) Component C: Accessories, including drill bits and saw blades, do not carry a warranty.



Subject to the conditions and limitations described below, this product, if returned to us with proof of purchase within the stated warranty period and if covered under this warranty, will be repaired or replaced (with the same model, or one of equal value or specification), at the sole discretion of the Maximum Canada authorized repair centre ("Service Provider"). We will bear the cost of any repair or replacement and any costs of labour relating thereto.

These warranties are subject to the following conditions and limitations:

- a) a bill of sale verifying the purchase and purchase date must be provided;
- b) defects in workmanship and material to be assessed and determined by the Service Provider
- c) this warranty will not apply to any product or part thereof which is worn or broken or which has become inoperative due to abuse, misuse, accidental damage, neglect or lack of proper installation, operation or maintenance (as outlined in the applicable owner's manual or operating instructions);
- d) this warranty does not apply to normal wear and tear or to expendable parts or accessories (including drill bits and saw blades) that may be supplied with the product that by their nature have a limited life span and are expected to become inoperative or unusable after a reasonable period of use;
- e) this warranty will not apply to routine maintenance and consumable items such as, but not limited to, fuel, lubricants, vacuum bags, blades, belts, sandpaper, bits, fluids, rubber o-rings, tune-ups or adjustments;
- f) this warranty excludes the following components that may accompany your product:
 - (1) Batteries/chargers, which can be repaired or replaced due to defects in workmanship or materials for a period of 3 years from the date of original retail purchase. Any defects with such battery and/or charger will be subject to repair or replacement as determined by the Service Provider.
 - (2) The carrying case, which is only for a period of 1-year from the date of original retail purchase against defects in workmanship and materials.
 - (3) Accessories, including drill bits and saw blades, which do not carry a warranty of any kind.
- g) this warranty will not apply where damage is caused by repairs made or

attempted by anyone other than the Service Provider (i.e. persons not authorized by the manufacturer), and any such unauthorized repairs or attempted repairs shall void this warranty in its entirety;

- h) this warranty will not apply to any parts other than original parts, except to the extent that the retailer or manufacturer or persons authorized by either of them have repaired or replaced them;
- i) this warranty will not apply to any product that was sold to the original purchaser as a reconditioned or refurbished product (unless otherwise specified in writing);
- j) this warranty will not apply to any product or part thereof if any part from another manufacturer is installed therein or any repairs or alterations have been made or attempted by unauthorized persons;
- k) this warranty will not apply to normal deterioration of the exterior finish, such as, but not limited to, scratches, dents, paint chips, or to any corrosion or discolouring by heat, abrasive and chemical cleaners; and
- l) this warranty will not apply to component parts sold by and identified as the product of another company, which shall be covered under that product manufacturer's warranty, if any;
- m) any products replaced by the retailer in attempt to fulfill warranty obligations is subject to the original product warranty conditions and related time period as initiated by the original date of purchase; if product is purchased in Quebec, the warranty term will be extended for a period equal to the time during which the Quebec retailer possesses the product in attempt to fulfill warranty obligations; replaced product will not default to new product warranty conditions; and
- n) The retailer and manufacturer's sole obligation and the purchaser's sole remedy under this warranty shall be as set out herein. The warranties contained herein are not transferable and are given only to the purchaser. FURTHER, THE WARRANTIES SET OUT HEREIN ARE IN LIEU OF ALL OTHER WARRANTIES OR CONDITIONS, WHETHER EXPRESS, IMPLIED OR STATUTORY (INCLUDING SUCH AS ARISE UNDER THE SALE OF GOODS ACT OR THE INTERNATIONAL SALE OF GOODS ACT), ARISING OUT OF A COURSE OF DEALING OR USAGE OF TRADE OR OTHERWISE, INCLUDING, SUBJECT TO APPLICABLE LAW, ANY IMPLIED WARRANTIES OR CONDITIONS OF MERCHANTABILITY, MERCHANTABILITY, FITNESS OR ADEQUACY FOR A PARTICULAR PURPOSE OR USE, AND ALL OTHER SUCH WARRANTIES ARE EXPRESSLY DISCLAIMED BY THE RETAILER AND MANUFACTURER.

ADDITIONAL LIMITATIONS

This warranty applies only to the original purchaser and may not be transferred.

This warranty applies for a period of 5 years from the date of original retail purchase, as indicated on the bill of sale.

Neither the retailer, Maximum Canada, nor the manufacturer shall be liable for any other expense, loss or damage, including, without limitation, any indirect, incidental, consequential or exemplary damages arising in connection with the sale, use or inability to use this product.

Under no circumstances shall the retailer, Maximum Canada, or manufacturer be liable to the purchaser for any claim for (a) indirect, special, punitive,

incidental, exemplary, or consequential damages, (b) compensation for loss of profits, anticipated revenue, savings or goodwill, or other economic loss of the purchaser, (c) exemplary, aggravated or punitive damages howsoever incurred, (d) contribution or set-off in respect of any claims against the purchaser, (e) any damages whatsoever relating to third party products or services or the purchaser's materials, or (f) any damages whatsoever relating to interruption, delays, errors or omissions; in each case under any theory of law or equity, arising out of or in any way related to this warranty, even if advised of the possibility thereof. Notwithstanding any provision herein or entitlement of the purchaser at law, in equity or otherwise, in no event shall the liability of the retailer or manufacturer under this warranty, whether in contract, tort, product liability or otherwise, exceed, in the aggregate, the amount paid by the purchaser to the retailer for the product to which this warranty applies.

NOTICE TO CONSUMER

This warranty gives you specific legal rights, and you may have other rights, which may vary from province to province. The provisions contained in this warranty are not intended to limit, modify, take away from, disclaim or exclude any statutory warranties set forth in any applicable provincial or federal legislation.

In addition to the 5-Year Limited Warranty, this MAXIMUM product is covered by our:

1-YEAR REPAIR WARRANTY

Maximum Canada will maintain this product and replace critical parts which have worn beyond reasonable use through normal use of such product, any time during the first year after purchase.

The following are excluded from this 1-Year Repair Warranty:

- a) Missing or damaged parts or components that are a result of abuse or misuse;
- b) Any wear and tear to non-critical parts or accessories that do not affect the core function of the product.

90-DAY SATISFACTION GUARANTEE

If you are not completely satisfied with the performance of your MAXIMUM product for any reason, you can return it within 90 days from the date of purchase with proof of purchase for exchange or a full refund.

Imported by MAXIMUM Canada Toronto, Canada M4S 2B8

Made in China