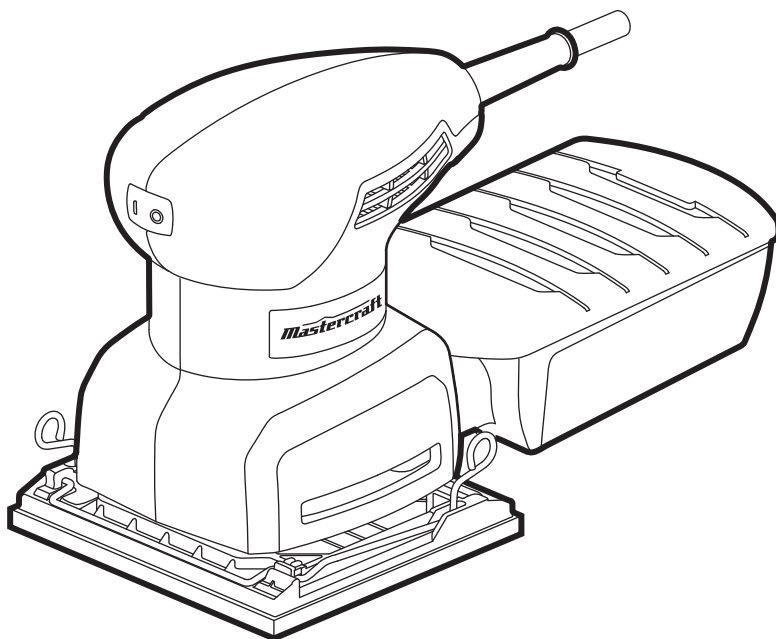


model no. 054-7152-8

**Mastercraft**<sup>®</sup> MD

## 1/4 SHEET SANDER



**IMPORTANT:**

Read and understand this instruction manual thoroughly before using the product.

**INSTRUCTION  
MANUAL**

**TABLE OF CONTENTS**

Technical Specifications	4
Safety Guidelines	5
Key Parts Diagram	9
Operating Instructions	10
Maintenance	12
Troubleshooting	13
Parts List	14
Warranty	16

**NOTE:**

If any parts are missing or damaged, or if you have any questions, please call our toll-free helpline at 1-800-689-9928.

**SAVE THESE INSTRUCTIONS**

- This manual contains important safety and operating instructions. Read all instructions and follow them with use of this product.

**TECHNICAL SPECIFICATIONS**

Rated voltage	120V~ 60 Hz
Rated power input	2.2A
Speed	14,000 OPM
Pad size	4 x 4 1/2" (10.2 x 11.4 cm)
Paper	1/4 sheet
Weight	2 lb 7 oz (1.1 kg)
Vibration	$a_{hi} = 3.5 \text{ m/s}^2$ , $K=1.5$
Noise level	$L_p$ : 88.6 dB(A); $L_w$ : 99.6 dB(A)

**SAFETY GUIDELINES****WARNING!**

Safety symbols in this instruction manual are used to flag possible dangers. The safety symbols and their explanations require your full understanding. The safety warnings do not, by themselves, eliminate any danger, nor are they substitutes for proper accident prevention measures.

**WARNING!**

This safety alert symbol indicates caution, warning, or danger. Failure to obey a safety warning can result in serious injury to yourself or others. To reduce the risk of injury, fire, or electric shock, always follow the safety precautions.

**KNOW YOUR TOOL**

To operate this tool, carefully read this instruction manual and all labels affixed to the sander before using. Keep this manual available for future reference.

**IMPORTANT**

This tool should only be serviced by a qualified service technician. For more information, call the toll-free helpline at 1-800-689-9928.

**READ ALL INSTRUCTIONS THOROUGHLY****SAVE THESE INSTRUCTIONS****GENERAL POWER TOOL SAFETY WARNINGS****WARNING!**

Read all safety warnings and instructions. Failure to follow the warnings and instructions may result in electric shock, fire and/or serious injury.

**SAVE ALL WARNINGS AND INSTRUCTIONS FOR FUTURE REFERENCE.**

The term "power tool" in the warnings refers to your mains-operated (corded) power tool or battery-operated (cordless) power tool.

**WORK AREA SAFETY**

- **Keep work area clean and well lit.** Cluttered or dark areas invite accidents.
- **Do not operate power tools in explosive atmospheres, such as in the presence of flammable liquids, gases or dust.** Power tools create sparks, which may ignite the dust or fumes.
- **Keep children and bystanders away while operating a power tool.** Distractions can cause you to lose control.

**ELECTRICAL SAFETY**

- **Power tool plugs must match the outlet.** Never modify the plug in any way. Do not use any adapter plugs with earthed (grounded) power tools. Unmodified plugs and matching outlets will reduce risk of electric shock.
- **Avoid body contact with earthed or grounded surfaces such as pipes, radiators, ranges and refrigerators.** There is an increased risk of electric shock if your body is earthed or grounded.
- **Do not expose power tools to rain or wet conditions.** Water entering a power tool will increase the risk of electric shock.
- **Do not abuse the cord.** Never use the cord for carrying, pulling or unplugging the power tool. Keep the cord away from heat, oil, sharp edges or moving parts. Damaged or entangled cords increase the risk of electric shock.
- **When operating a power tool outdoors, use an extension cord suitable for outdoor use.** Use of a cord suitable for outdoor use reduces the risk of electric shock.
- **If operating a power tools in a damp location is unavoidable, use a ground-fault circuit interrupter (GFCI) protected supply.** Use of a GFCI reduces the risk of electric shock.

**PERSONAL SAFETY**

- **Stay alert, watch what you are doing and use common sense when operating a power tool.** Do not use a power tool while you are tired or under the influence of drugs, alcohol or medication. A moment of inattention while operating power tools may result in serious personal injury.
- **Use personal protective equipment.** Always wear eye protection. Protective equipment such as dust mask, non-skid safety shoes, hard hat, or hearing protection used for appropriate conditions will reduce personal injuries.
- **Prevent unintentional starting.** Ensure that the switch is in the off-position before connecting to power source or battery pack, picking up or carrying the tool. Carrying power tools with your finger on the switch or energising power tools that have the switch on invites accidents.
- **Remove any adjusting key or wrench before turning the power tool on.** A wrench or a key left attached to a rotating part of the power tool may result in personal injury.
- **Do not overreach. Keep proper footing and balance at all times.** This enables better control of the power tool in unexpected situations.
- **Dress properly. Do not wear loose clothing or jewellery. Keep your hair, clothing and gloves away from moving parts.** Loose clothes, jewellery or long hair can be caught in moving parts.
- **If devices are provided for the connection of dust extraction and collection facilities, ensure that these are connected and properly used.** Use of dust collection devices can reduce dust-related hazards.

**POWER TOOL USE AND CARE**

- **Do not force the power tool.** Use the correct power tool for your application. The correct power tool will do the job better and more safely at the rate for which it was designed.
- **Do not use the power tool if the switch does not turn it on and off.** Any power tool that cannot be controlled with the switch is dangerous and must be repaired.
- **Disconnect the plug from the power source and/or the battery pack from the power tool before making any adjustments, changing accessories, or storing power tools.** Such preventive safety measures reduce the risk of starting the power tool accidentally.
- **Store idle power tools out of the reach of children and do not allow persons unfamiliar with the power tool or these instructions to operate the power tool.** Power tools are dangerous in the hands of untrained users.
- **Maintain power tools.** Check for misalignment or binding of moving parts, breakage of parts and any other condition that may affect the power tool's operation. If damaged, have the power tool repaired before use. Many accidents are caused by poorly maintained power tools.
- **Keep cutting tools sharp and clean.** Properly maintained cutting tools with sharp cutting edges are less likely to bind and are easier to control.
- **Use the power tool, accessories, tool bits, etc. in accordance with these instructions, taking into account the working conditions and the work to be performed.** Use of the power tool for operations different from those intended could result in a hazardous situation.

**SERVICE**

- **Have your power tool serviced by a qualified repair person using only identical replacement parts.** This will ensure that the safety of the power tool is maintained.

**SPECIAL SAFETY RULES FOR SANDERS**

- **Hold the power tool by insulated gripping surfaces when performing an operation where the cutting accessory may contact hidden wiring or its own cord.** If a cutting accessory contacts a "live" wire, it may cause the exposed metal parts of the power tool to become "live" and shock the operator.
- **The label on your tool may include the following symbols. The symbols and their definitions are as follows:**

V ..... Volts

A ..... Amperes

Hz ..... Hertz

W ..... Watts

min ..... Minutes

~ ..... Alternating current

= = = ..... Direct current

$n_0$  ..... No-load speed

 ..... Class II Construction

.../min ..... Revolutions or reciprocation per minute

 ..... Grounding terminal

BPM ..... Beats per minute

 ..... WARNING – To reduce the risk of injury, user must read instruction manual.

 ..... WARNING – To reduce the risk of injury always wear eye protection.

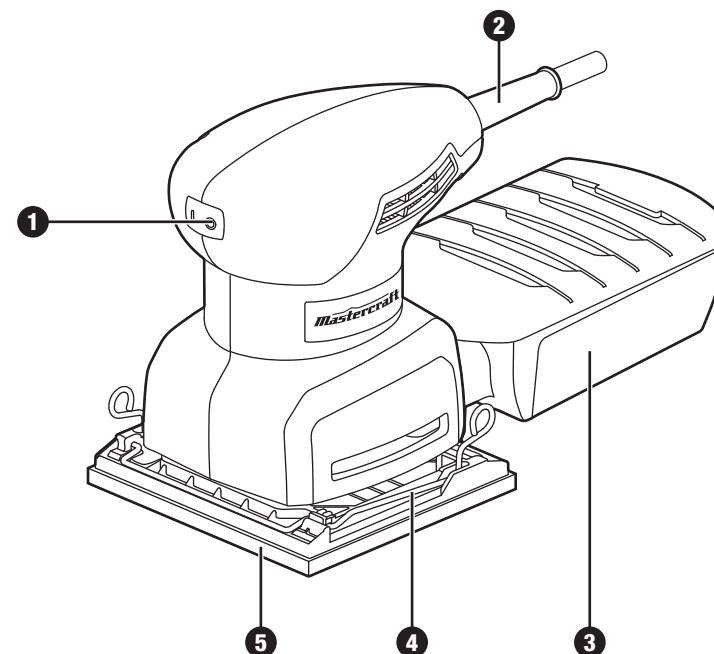
 ..... WARNING – To reduce the risk of injury always wear ear protection.

- **A suitable breathing respirator must be worn while sanding lead paint, some woods and metal to avoid breathing the harmful/toxic dust or air.**
- **Always wear safety goggles and a dust mask when sanding, especially when sanding overhead**
- **The machine is not suitable for wet sanding.**
- **Do not use sanding paper that is larger than needed.** Extra paper extending beyond the sanding pad can also cause serious lacerations.
- **Secure the workpiece.** A workpiece clamped with clamping devices or in a vice is held more securely than by hand.
- **Attach the dust bag to the tool and empty it frequently.** Do not throw sanding dust on an open fire, because materials in fine particle form may be explosive.
- **Protect your hearing.** Wear appropriate personal hearing protection during use. Under some conditions and duration of use, noise from this product may contribute to hearing loss.

#### PACKAGE CONTENTS:

1/4 sheet sander, 1pc sanding paper, dust box, punch plate and instruction manual.

#### KEY PARTS DIAGRAM



No.	Description
1	Sealed ON/OFF rocker switch
2	Cord guard
3	Dust box

No.	Description
4	Paper clamping system
5	Sanding pad

**OPERATING INSTRUCTIONS****SANDPAPER SHEETS**

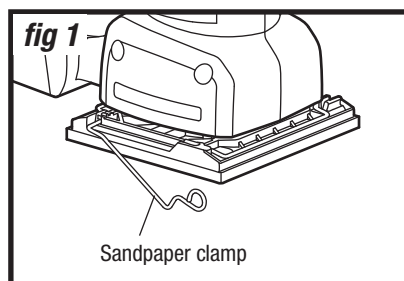
This sander uses 1/4 sheet sandpaper, which can be cut from standard (228 x 280 mm) sandpaper sheets.

For rough sanding, use coarse grit sandpaper.

For smooth or final sanding, use fine grit sandpaper.

**ATTACHING SANDPAPER (fig 1)**

1. Unplug the sander.
2. Disengage the paper clamp by pushing the wire clamp on the side of the sanding pad towards the sander's body.
3. Line up the edge of the sandpaper with the edge of the sanding pad. Insert the sandpaper under the clamp. To lock the sandpaper in place, engage the clamp.
4. Disengage the clamp on the other side of the sander. Stretch the sandpaper tightly over the foam pad and insert the outer edge under the clamp at the rear of the sander.
5. Line up the edge of the sandpaper with the edge of the sanding pad. To lock the sandpaper in place, engage the clamp.

**USING THE PUNCH PLATE**

After the sandpaper has been clamped to the sanding pad, use the punch plate to punch the vacuum holes into the sheet.

1. Align the punch plate with the sanding pad and push down on the sander until the punch plate pierces the sandpaper.
2. Remove the punch plate from the sanding pad.

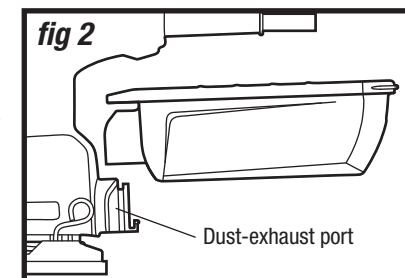
**NOTICE:** In order for the dust-collection system to function properly, it is necessary that holes are punched in the sandpaper such that the holes in the sandpaper align with the holes in the sanding pad.

**ATTACHING THE DUST BOX (fig 2)**

To install: Press the dust box port down on to the slot of the dust chute until the chute's detent fully engages with corresponding opening in the dust box.

To remove: Lift dust box port up.

To empty the dust box: Remove the box from the sander; gently tap the dust box to remove the dust.

**TURNING THE TOOL ON AND OFF**

Push the rocker switch to the left to the "I" position to turn the tool on "ON" and to the right to the "O" position to turn the tool "OFF".

**SANDING TIPS**

- Starting and stopping the sanding: Contact the workpiece with the tool only after it has reached full speed and remove it from the work before turning the switch "OFF". Operating in this manner will prolong switch and motor life and will greatly increase the quality of your work.
- Excessive pressure to the sander may result in an uneven sanding job and premature grit wear. Constant and excessive pressure can cause overheating and possible damage to the motor, as well as premature wear out of the pad.
  - a. Light pressure: recommended for fine work.
  - b. Moderate pressure: recommended for rough work.
  - c. Heavy pressure: does not allow the sand paper to rotate properly.
- If the surface is rough, start sanding with a coarse grit, then medium grit, and then finish with a fine or extra-fine grit. This procedure will vary with different types of materials and work.
- Continue to sand with each grit until the surface looks uniform.
- To remove the greatest amount of stock, use a coarse grit and move the sander steadily over the entire surface against the grain as well as with the grain. **DO NOT REMAIN IN ONE SPOT TOO LONG.** It may remove too much material and uneven sanding will result.
- Sanding with the grain of the wood gives the smoothest final finish.

**WARNING!**

- Always disconnect the sander from its power supply before attaching or removing sandpaper.

**MAINTENANCE**

Before cleaning or performing any maintenance, make sure that the sander has been disconnected from the power supply. Keep all ventilation openings clean. Avoid using solvents when cleaning plastic parts. Most plastics are susceptible to damage from various types of commercial solvents and may be damaged by their use. Use a clean cloth to remove dirt, oil and grease.

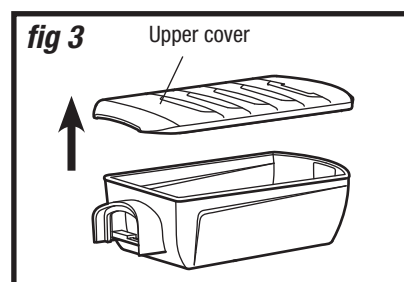
**LUBRICATION**

All of the bearings in this tool are lubricated with a sufficient amount of high-grade lubricant for the life of the unit under normal conditions. Therefore, no further lubrication is required.

**CLEANING (fig3)**

Remove the dust box from the sander and shake out the dust.

For a more thorough cleaning of the dust box, open the cover and gently shake or tap the box to empty. Use a soft brush to clean the filter in the cover.



**NOTICE:** The filter cannot be rinsed with water.

**WARNING!**

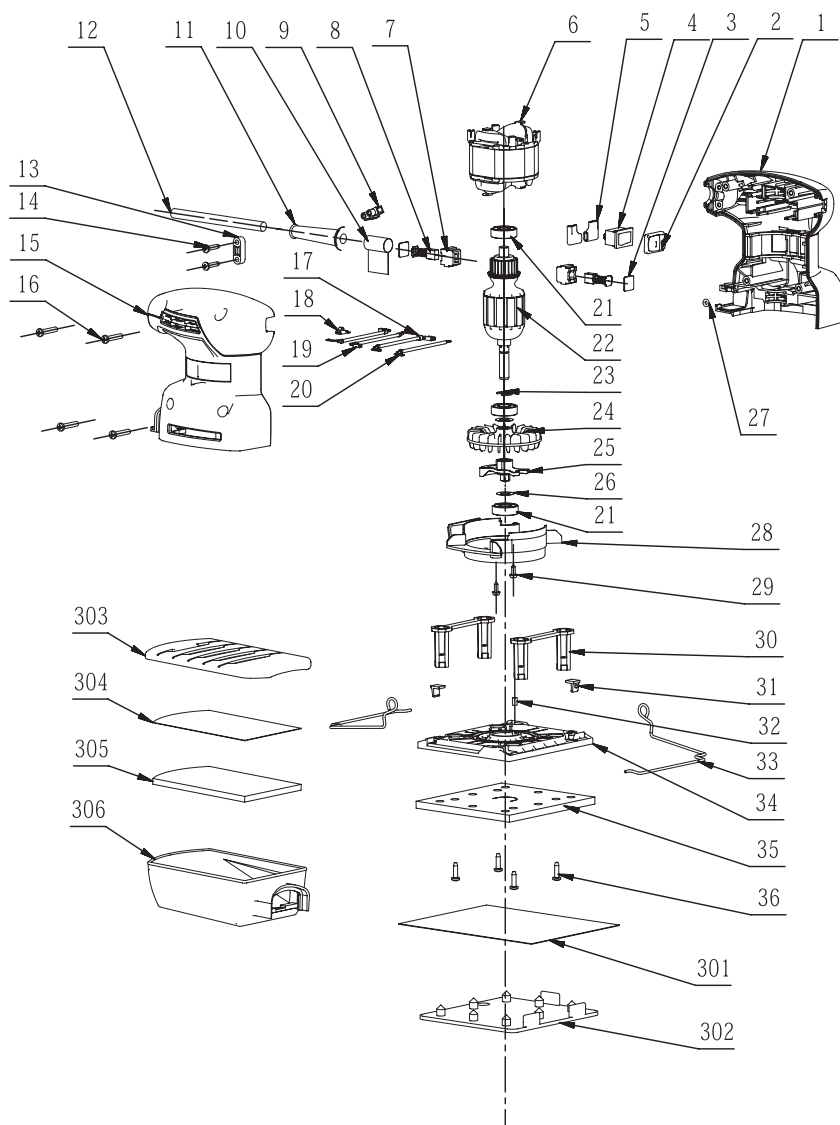
- Do not let brake fluids, gasoline, petroleum-based products, penetrating oil, etc., come in contact with plastic parts. They contain chemicals that can damage, weaken or destroy plastic.
- To ensure safety and reliability, all repairs should be performed by a qualified service technician.
- If the supply cord is damaged, it must be replaced by a specially-prepared cord available through the service organization.

**TROUBLESHOOTING**

Problem	Possible Causes	Solution
Motor overheating	Cooling vents may be obstructed by dust or other obstacles	Clean, clear vents. Do not cover with hand during operation

If any parts are missing or damaged, or if you have any questions, please call the toll-free helpline at 1-800-689-9928.

## EXPLODED VIEW



No.	Part No.	Description
1	3126220000	Left housing
2	3127055000	Switch cover
3	3700490000	Epoxy board
4	4870051000	Switch
5	4930008000	Sleeve
6	2740098000	Stator
7	2800176000	Brush holder
8	4960273000	Carbon brush
9	4930004000	Connector
10	2490136000	Nylon string
11	3121011000	Cord guard
12	4810002000	Power cord and plug
13	3120234000	Cord anchorage
14	5610024000	Tapping screw
15	3126209000	Right housing
16	5610106000	Tapping screw
17	4860302000	Internal wire assembly
18	4930041000	Receptacle
19	4860298000	Internal wire assembly
20	4860299000	Internal wire assembly
21	5700008000	Ball bearing

No.	Part No.	Description
22	2751036000	Rotor
23	5660029000	E ring
24	3128064000	Dust fan
25	3520869000	Counterweight
26	5650187000	Washer
27	5690013000	O ring
28	3127319000	Fan baffle
29	3700137000	Flange screw
30	3120282000	Pad support
31	3124490000	Insert block
32	3121038000	Rubber stick
33	3650137000	Paper clamp
34	3126233000	Bottom support
35	3700521000	Soft pad
36	5610023000	Tapping screw
301	2820409000	Sanding paper
302	3121354000	Paper punch
303	3121374000	Dust box cover
304	3700979000	Dust filter paper
305	3700981000	Sponge
306	3121373000	Dust box

If any parts are missing or damaged, or if you have any questions, please call the toll-free helpline at 1-800-689-9928.





This Mastercraft product is guaranteed for a period of **3 years from the date of original retail purchase** against defects in workmanship and materials, except for the following components:

- a) Component A: Batteries, chargers and carrying case, which are guaranteed for a period of 2 years from the date of original retail purchase against defects in workmanship and materials;
- b) Component B: Accessories, which are guaranteed for a period of 1 year from the date of original retail purchase against defects in workmanship and materials.

Subject to the conditions and limitations described below, this product, if returned to us with proof of purchase within the stated warranty period and if covered under this warranty, will be repaired or replaced (with the same model, or one of equal value or specification), at our option. We will bear the cost of any repair or replacement and any costs of labour relating thereto.

**These warranties are subject to the following conditions and limitations:**

- a) a bill of sale verifying the purchase and purchase date must be provided;
- b) this warranty will not apply to any product or part thereof which is worn or broken or which has become inoperative due to abuse, misuse, accidental damage, neglect or lack of proper installation, operation or maintenance (as outlined in the applicable owner's manual or operating instructions) or which is being used for industrial, professional, commercial or rental purposes;
- c) this warranty will not apply to normal wear and tear or to expendable parts or accessories that may be supplied with the product that are expected to become inoperative or unusable after a reasonable period of use;
- d) this warranty will not apply to routine maintenance and consumable items such as, but not limited to, fuel, lubricants, vacuum bags, blades, belts, sandpaper, bits, fluids, tune-ups or adjustments;
- e) this warranty will not apply where damage is caused by repairs made or attempted by others (i.e. persons not authorized by the manufacturer);
- f) this warranty will not apply to any product that was sold to the original purchaser as a reconditioned or refurbished product (unless otherwise specified in writing);
- g) this warranty will not apply to any product or part thereof if any part from another manufacturer is installed therein or any repairs or alterations have been made or attempted by unauthorized persons;

- h) this warranty will not apply to normal deterioration of the exterior finish, such as, but not limited to, scratches, dents, paint chips, or to any corrosion or discolouring by heat, abrasive and chemical cleaners; and
- i) this warranty will not apply to component parts sold by and identified as the product of another company, which shall be covered under the product manufacturer's warranty, if any.

**Additional Limitations**

This warranty applies only to the original purchaser and may not be transferred. Neither the retailer nor the manufacturer shall be liable for any other expense, loss or damage, including, without limitation, any indirect, incidental, consequential or exemplary damages arising in connection with the sale, use or inability to use this product.

**Notice to Consumer**

This warranty gives you specific legal rights, and you may have other rights, which may vary from province to province. The provisions contained in this warranty are not intended to limit, modify, take away from, disclaim or exclude any statutory warranties set forth in any applicable provincial or federal legislation.

Made in China

Imported by

Mastercraft Canada Toronto, Canada M4S 2B8

