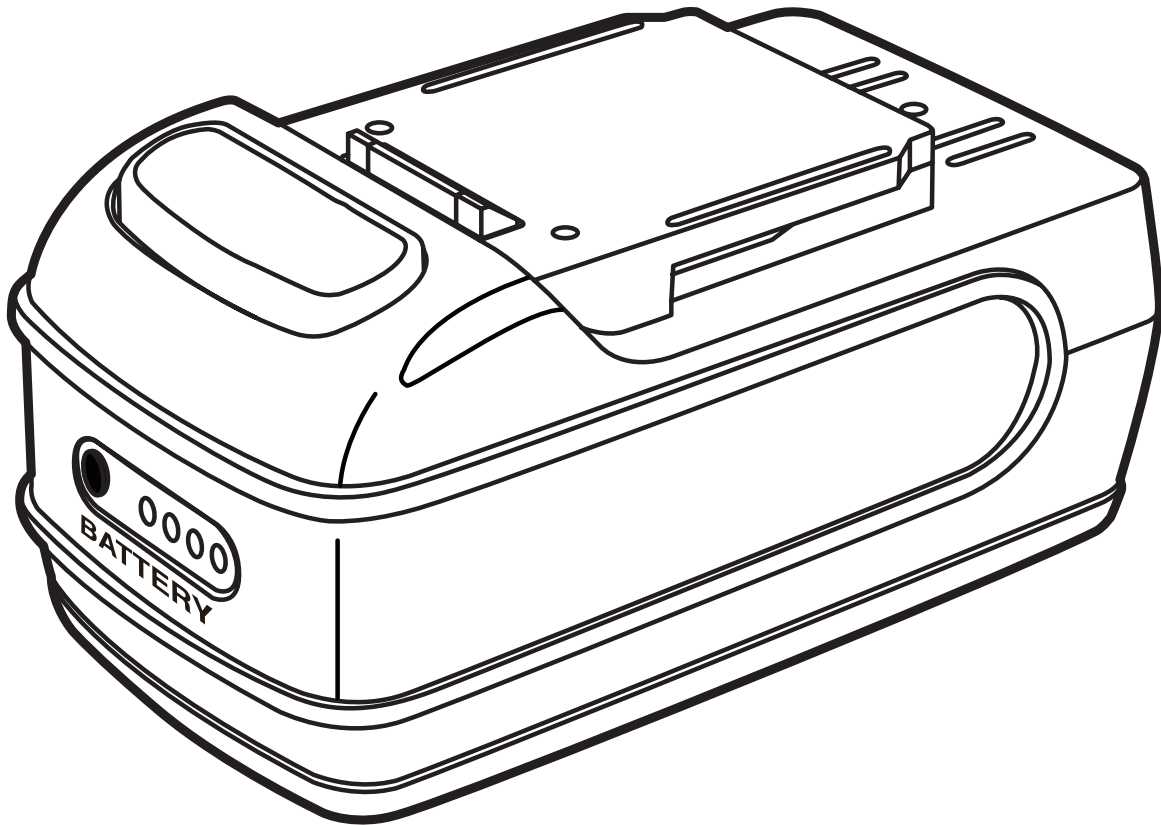


# Mastercraft<sup>®</sup> **MAXIMUM**

## OPERATING MANUAL Ni-Cd Battery Pack

054-3104-8



Toll-free Helpline: 1-800-689-9928

### IMPORTANT:

⚠ Read this Operating Manual carefully before using the charger. Pay close attention to all **Safety Instructions, Warnings, and Caution sections**. Use this tool properly, and only for its intended use.

⚠ Safety symbols in this manual are used to indicate possible dangers, and the explanations must be understood completely. The safety warnings do not eliminate any danger by themselves, and they are not a substitute for proper accident prevention measures.

⚠ This Safety Alert Symbol indicates caution, warning, or danger. Failure to obey a safety warning may result in serious injury to the operator or to others. To reduce the risk of injury, fire, or electric shock, follow the safety precautions closely.

**TABLE OF CONTENTS**

Safety Rules..... Page 3  
Operation..... Page 5  
Maintenance..... Page 6  
Exploded View..... Page 7  
Parts List..... Page 8  
Warranty..... Page 9

**SPECIFICATIONS**

Battery type:	Ni-Cd
Battery voltage:	14.4V DC, 1.7 Ah
Battery weight:	1 lb 11 oz (0.78 kg)
Optimum Charging Temperature:	50° to 86° F (10° to 30° C)

## SAFETY RULES

Before using this battery pack, carefully read this Operating Manual and all of the labels affixed to the battery pack. Keep this manual in a safe place for future reference.

### IMPORTANT

This battery pack should only be serviced by a qualified service technician.

### READ ALL INSTRUCTIONS CAREFULLY

### SAVE THESE INSTRUCTIONS

#### GENERAL SAFETY RULES

##### WORK AREA SAFETY

- **Keep the work area clean and well lit.** Cluttered benches and dark areas invite accidents.
- **Do not operate power tools in an explosive environment**, such as in the presence of flammable liquids, gases, or dust. Power tools create sparks, which may ignite the dust or fumes.
- **Keep bystanders, children, and visitors away** when operating power tools. Distractions can cause the operator to lose control.

##### ELECTRICAL SAFETY

- **Avoid bodily contact with grounded surfaces**, such as pipes, radiators, ranges, and refrigerators. There is an increased risk of electric shock if the operator's body is grounded.
- **Do not expose power tools to rain or wet conditions.** Water entering a power tool will increase the risk of electric shock.

##### USE AND CARE OF CORDLESS POWER TOOLS

- **Use only specifically designated battery packs with power tools.** The use of any other battery pack may create a risk of injury and fire.
- **Cordless tools do not have to be plugged into an electrical outlet. Therefore, they are always ready to operate. Be aware of possible hazards when not using the cordless tool or when changing accessories.** Following this rule will reduce the risk of electric shock, fire, and serious personal injury.

##### SPECIFIC SAFETY RULES FOR THE BATTERY PACK

- **Verify that the power-tool switch is in the “off” position before inserting the battery pack.** Inserting the battery pack into a power tool that has the switch in the “on” position invites accidents.
- **When recharging, use only the charger that is specified by the manufacturer.** A charger that is suitable for one type of battery pack may create a risk of fire when used with another battery pack.
- **Use only specifically designated battery packs with power tools.** The use of any other battery pack may create a risk of injury and fire.
- **When the battery pack is not in use, keep it away from objects that can create a connection between the terminals**, such as paper clips, coins, keys, nails, screws or other small metal objects. Short-circuiting the battery terminals may cause burns or a fire.
- **Avoid contact with any liquid that is emitted by a battery.** If the battery pack is abused, liquid may escape from the battery. Liquid emitted from the battery may cause irritation or burns. If liquid comes into contact with the skin, wash the area immediately with soap and water, and then neutralize the liquid with lemon juice or vinegar. If contact occurs, rinse thoroughly with running water. If liquid comes into contact with the eyes, rinse thoroughly with running water and seek medical help.

- **Do not place cordless tools or battery packs near a source fire or heat.** This will reduce the risk of explosion and possibly injury.
- **Do not crush, drop, or damage the battery pack.** Do not use a battery pack or a charger that has been dropped or that has received a sharp blow. A damaged battery may explode. Dispose of a dropped or damaged battery immediately, in compliance with local regulations.
- **Batteries vent hydrogen gas and may explode in the presence of a source of ignition, such as a pilot light.** To reduce the risk of serious personal injury, do not use a cordless tool in the presence of an open flame. An exploded battery can propel debris and chemicals. If exposed, rinse with running water immediately.
- **Do not charge the battery pack in a damp or wet location.** Following this rule will reduce the risk of electric shock.
- **For best results, charge the battery between 50° and 86° F (between 10° and 30°C).**
- **Do not store the battery pack outdoors or inside a vehicle.** Store battery pack in well ventilated, dry and cool conditions, and avoid direct sunlight and rain.
- **Battery leakage may occur under extreme usage or temperature conditions.** If liquid comes into contact with the skin, wash the area immediately with soap and water, and then neutralize the liquid with lemon juice or vinegar. If the liquid gets into the eyes, rinse them with clean running water for at least 10 minutes, and then seek medical attention immediately. Following this rule will reduce the risk of serious personal injury.
- **Do not allow gasoline, oils, petroleum-based products, etc. to come into contact with plastic parts.** These substances contain chemicals that can damage, weaken, or destroy plastic.
- **Keep this manual.** Refer to it frequently and use it to instruct others who may use this battery pack. Anyone who uses this battery pack must read this Manual carefully.

## **SERVICE**

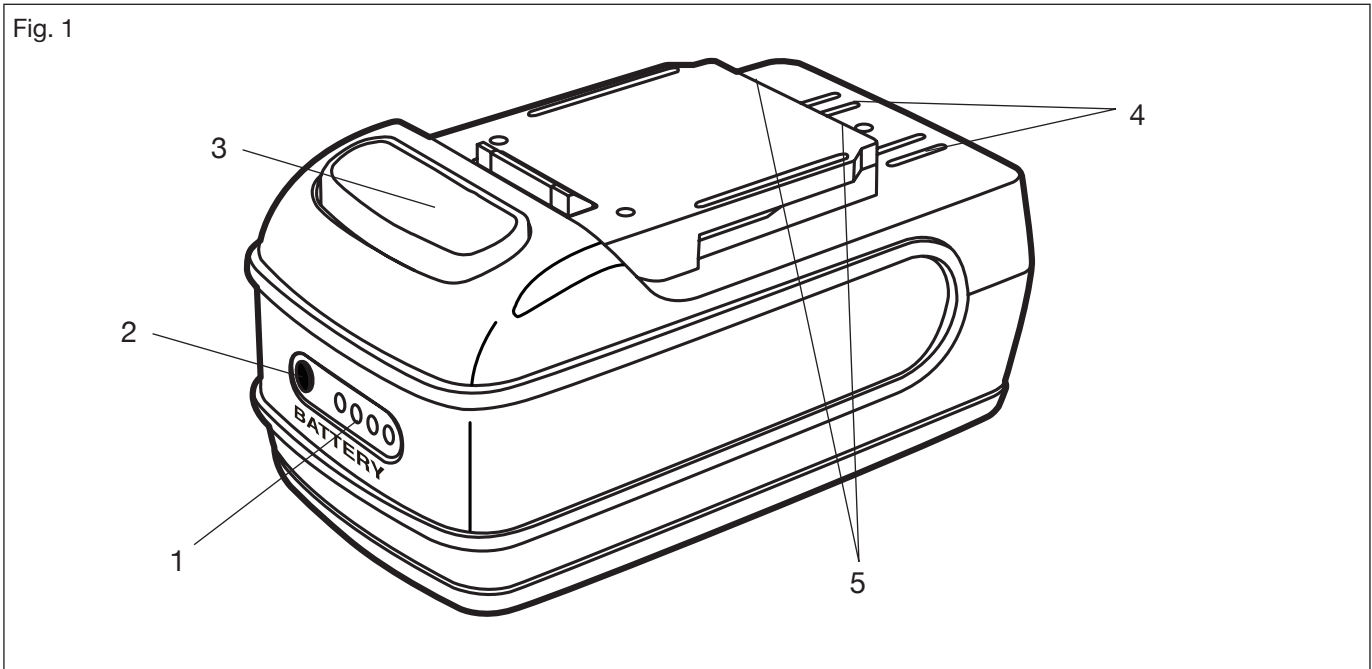
- This battery pack should be serviced by a qualified service technician, using identical replacement parts. This will ensure that the safety of the battery pack is maintained.

## OPERATION

### BECOME FAMILIAR WITH THE NI-CAD BATTERY PACK (Fig. 1)

Before attempting to use this battery pack, become familiar with all of its operating features and safety requirements.

Fig. 1

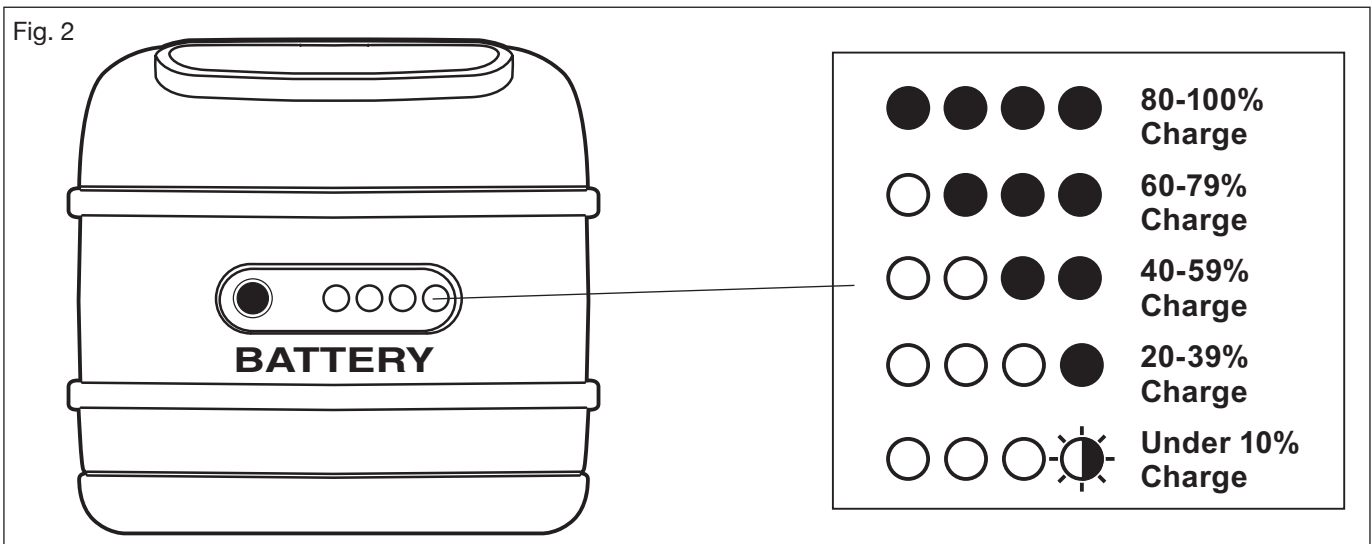


1. POWER BAR
2. POWER BAR button
3. Battery release button
4. Battery vents
5. Electrical contacts

### POWER BAR

The Ni-Cad battery pack is equipped with a POWER BAR, which is used to display the remaining capacity of the battery pack. Press the POWER BAR button to display the LED lights. The LED lights will stay lit for approximately 4 seconds.

Fig. 2



● ● ● ●	80-100% Charge
○ ● ● ●	60-79% Charge
○ ○ ● ●	40-59% Charge
○ ○ ○ ●	20-39% Charge
○ ○ ○ ◐	Under 10% Charge

## WHEN TO CHARGE THE BATTERY PACK

- Use the POWER BAR to determine when the battery pack needs to be recharged.
- It is recommended that the battery pack be brought up to full charge before starting a big job or using it for an extended period of time.

## MAINTENANCE

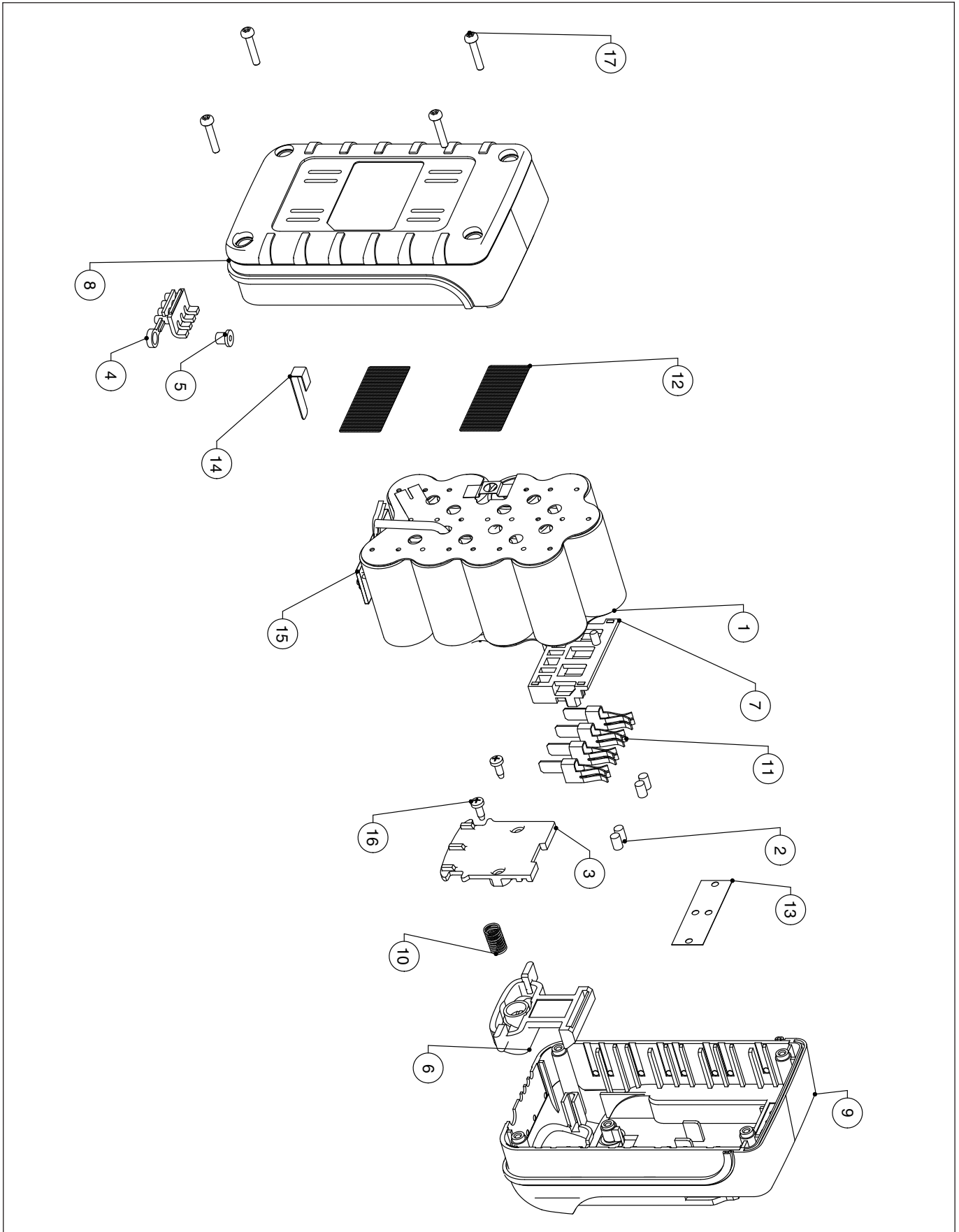
**⚠ WARNING:** Do not let brake fluids, gasoline, petroleum-based products, penetrating oil, etc. come into contact with plastic parts. These substances contain chemicals that can damage, weaken, or destroy plastic.

**⚠ WARNING:** When servicing, use only identical replacement parts. The use of any other parts may create a hazard or cause damage to the product.

**⚠ WARNING:** Use only accessories that are recommended for this battery pack by the manufacturer. Accessories that may be suitable for one tool may become hazardous when used with another tool.

**⚠ WARNING:** To ensure safety and reliability, all repairs should be performed by a qualified service technician.

# EXPLODED VIEW



## PARTS LIST

ITEM NO.	PARTS NO.	PART DESCRIPTION	QTY.
1	2822393000	Battery ASSY	1
2	3121038000	Rubber Stick	4
3	3123467000	Plate	1
4	3123515000	Light Guide Pole	1
5	3123516000	Switch Cover	1
6	3123534000	Push Button	1
7	3123695000	Contact Terminal	1
8	3320554000	Power Pack Housing	1
9	3320556000	Power Pack Cover	1
10	3660148000	Spring	1
11	3700717000	Contacto	4
12	3703643000	Dust Cover	2
13	3704001000	Dust Cover	1
14	3704004000	Click Spring	1
15	4890390000	PCB Assembly	1
16	5610010000	Tapping Screw	2
17	5610218000	Screw	4

# WARRANTY

## 2-Year Limited Warranty

This Mastercraft Maximum product is guaranteed for a period of **2 years** from the date of original retail purchase against defects in workmanship and materials.

Subject to the conditions and limitations described below, this product, if returned to us with proof of purchase within the stated warranty period and if covered under this warranty, will be repaired or replaced (with the same model, or one of equal value or specification), at our option. We will bear the cost of any repair or replacement and any costs of labour relating thereto.

### **These warranties are subject to the following conditions and limitations:**

- a) A bill of sale verifying the purchase and purchase date must be provided;
- b) This warranty will not apply to any product or part thereof which is worn or broken or which has become inoperative due to abuse, misuse, accidental damage, neglect or lack of proper installation, operation or maintenance (as outlined in the applicable operating manual or operating instructions) or which is being used for industrial, professional, commercial or rental purposes;
- c) This warranty will not apply to normal wear and tear or to expendable parts or accessories that may be supplied with the product that are expected to become inoperative or unusable after a reasonable period of use;
- d) This warranty will not apply to routine maintenance and consumable items such as, but not limited to, fuel, lubricants, vacuum bags, blades, belts, sandpaper, bits, fluids, tune-ups or adjustments;
- e) This warranty will not apply where damage is caused by repairs made or attempted by others (i.e. persons not authorized by the manufacturer);
- f) This warranty will not apply to any product that was sold to the original purchaser as a reconditioned or refurbished product (unless otherwise specified in writing);
- g) This warranty will not apply to any product or part thereof if any part from another manufacturer is installed therein or any repairs or alterations have been made or attempted by unauthorized persons;
- h) This warranty will not apply to normal deterioration of the exterior finish, such as, but not limited to, scratches, dents, paint chips, or to any corrosion or discolouring by heat, abrasive and chemical cleaners; and
- i) This warranty will not apply to component parts sold by and identified as the product of another company, which shall be covered under the product manufacturer's warranty, if any.

### **Additional Limitations**

This warranty applies only to the original purchaser and may not be transferred. Neither the retailer nor the manufacturer shall be liable for any other expense, loss or damage, including, without limitation, any indirect, incidental, consequential or exemplary damages arising in connection with the sale, use or inability to use this product.

### **Notice to Consumer**

This warranty gives you specific legal rights, and you may have other rights, which may vary from province to province. The provisions contained in this warranty are not intended to limit, modify, take away from, disclaim or exclude any statutory warranties set forth in any applicable provincial or federal legislation.

**IMPORTED BY MASTERCRAFT CANADA TORONTO, CANADA M4S 2B8**

