

MAXIMUM™

1/2" (1.27 cm)

Heavy-duty Drill



Model No. 054-1359-4

IMPORTANT:

Please read this manual carefully before using this product, and save it for reference.

**INSTRUCTION
MANUAL**

TABLE OF CONTENTS

TECHNICAL SPECIFICATIONS	4
GENERAL POWER TOOL SAFETY WARNINGS	5
SYMBOLS	8
PARTS LIST	9
ACCESSORIES	10
KNOW YOUR DRILL	11
OPERATING INSTRUCTIONS	12
WORKING HINTS FOR YOUR DRILL	14
MAINTAIN TOOLS WITH CARE	15
TROUBLESHOOTING	16
WARRANTY	17

NOTE: If any parts are missing or damaged, or if you have any questions, please call our toll-free helpline at 1-888-670-6682



SAVE THESE INSTRUCTIONS

This manual contains important safety and operating instructions. Read all instructions and follow them with use of this product.

TECHNICAL SPECIFICATIONS

VOLTAGE	120 V 60 Hz AC
CURRENT	8A
NO LOAD SPEED	0-2700 RPM
KEYED CHUCK	1/2" (1.27 cm)
DRILLING CAPACITY	
	STEEL 1/2" (1.27 cm)
	WOOD 1-1/2" (3.8 cm)
PROTECTION CLASS	□ /II
CORD LENGTH	10' (3 m)
WEIGHT	5 lb 6 oz (2.5 kg)

WORK AREA SAFETY

- Keep work area clean and well lit. Cluttered or dark areas invite accidents.
- Do not operate power tools in explosive atmospheres, such as in the presence of flammable liquids, gases or dust. Power tools create sparks which may ignite the dust or fumes.
- Keep children and bystanders away while operating a power tool. Distractions can cause you to lose control.



WARNING!

Some dust created by power sanding, sawing, grinding, drilling and other construction activities contains chemicals known to the state of California to cause cancer, birth defects or other reproductive harm. Some examples of these chemicals are:

- Lead from lead-based paints,
- Crystalline silica from bricks and cement and other masonry products,
- Arsenic and chromium from chemically-treated lumber.

Your risk from these exposures varies, depending on how often you do this type of work. To reduce your exposure to these chemicals, work in a well ventilated area, and work with approved safety equipment, such as those dust masks that are specially designed to filter out microscopic particles.



WARNING!

This product may contain lead, phthalates or other chemicals known to the state of California to cause cancer, birth defects and other reproductive harm. Please wash your hands after use.



WARNING!

Read all safety warnings and instructions. Failure to follow the warnings and instructions may result in electric shock, fire and/or serious injury.

Save all warnings and instructions for future reference.

- The term power tool in the warnings refers to your electric (corded) power tool or battery-operated (cordless) power tool.

ELECTRICAL SAFETY

- **Power tool plugs must match the outlet. Never modify the plug in any way.** Do not use any adapter plugs with grounded power tools. Unmodified plugs and matching outlets will reduce risk of electric shock.
- **Avoid body contact with grounded surfaces such as pipes, radiators, ranges and refrigerators.** There is an increased risk of electric shock if your body is grounded.
- **Do not expose power tools to rain or wet conditions.** Water entering a power tool will increase the risk of electric shock.
- **Do not abuse the cord. Never use the cord for carrying, pulling or unplugging the power tool.** Keep cord away from heat, oil, sharp edges or moving parts. Damaged or entangled cords increase the risk of electric shock.
- **When operating a power tool outdoors, use an extension cord suitable for outdoor use.** Use of a cord suitable for outdoor use reduces the risk of electric shock.
- **If operating a power tool in a damp location is unavoidable, use a residual current device (RCD) protected supply.** Use of an RCD reduces the risk of electric shock.

PERSONAL SAFETY

- **Stay alert, watch what you are doing and use common sense when operating a power tool. Do not use a power tool while you are tired or under the influence of drugs, alcohol or medication.** A moment of inattention while operating power tools may result in serious personal injury.
- **Use personal protective equipment. Always wear eye protection.** Protective equipment such as dust mask, non-skid safety shoes, hard hat, or hearing protection used for appropriate conditions will reduce personal injuries.
- **Prevent unintentional starting. Ensure the switch is in the off-position before connecting to power source and/or battery pack, picking up or carrying the tool.** Carrying power tools with your finger on the switch or energizing power tools that have the switch on invites accidents.
- **Remove any adjusting key or wrench before turning the power tool on.** A wrench or a key left attached to a rotating part of the power tool may result in personal injury.
- **Do not overreach. Keep proper footing and balance at all times.** This enables better control of the power tool in unexpected situations.
- **Dress properly. Do not wear loose clothing or jewellery.** Keep your hair, clothing and gloves away from moving parts. Loose clothes, jewellery or long hair can be caught in moving parts.
- **If devices are provided for the connection of dust extraction and collection facilities, ensure these are connected and properly used.** Use of dust collection can reduce dust-related hazards.

POWER TOOL USE AND CARE

- **Do not force the power tool. Use the correct power tool for your application.** The correct power tool will do the job better and safer at the rate for which it was designed.

- **Do not use the power tool if the switch does not turn it on and off.** Any power tool that cannot be controlled with the switch is dangerous and must be repaired.
- **Disconnect the plug from the power source and/or the battery pack from the power tool before making any adjustments, changing accessories, or storing power tools.** Such preventive safety measures reduce the risk of starting the power tool accidentally.
- **Store idle power tools out of the reach of children and do not allow persons unfamiliar with the power tool or these instructions to operate the power tool.** Power tools are dangerous in the hands of untrained users.
- **Maintain power tools.** Check for misalignment or binding of moving parts, breakage of parts and any other condition that may affect the power tool's operation. If damaged, have the power tool repaired before use. Many accidents are caused by poorly maintained power tools.
- **Keep cutting tools sharp and clean.** Properly maintained cutting tools with sharp cutting edges are less likely to bind and are easier to control.
- **Use the power tool, accessories and tool bits etc., in accordance with these instructions and in the manner intended for the particular type of power tool, taking into account the working conditions and the work to be performed.** Use of the power tool for operations other than those intended could result in a hazardous situation.

SERVICE

- **Have your power tool serviced by a qualified repair person using only identical replacement parts.** This will ensure that the safety of the power tool is maintained.

DRILL SAFETY WARNINGS

- **Wear ear protectors with impact drills.** Exposure to noise can cause hearing loss.
- **Use auxiliary handles supplied with the tool.** Loss of control can cause personal injury.
- **Hold power tool by insulated gripping surfaces, when performing an operation where the cutting accessory may contact hidden wiring or its own cord.** Cutting accessory contacting a "live" wire may make exposed metal parts of the power tool "live" and could give the operator an electric shock.

SYMBOLS



To reduce the risk of injury, user must read instruction manual



Double insulation



Warning



Wear ear protection



Wear eye protection



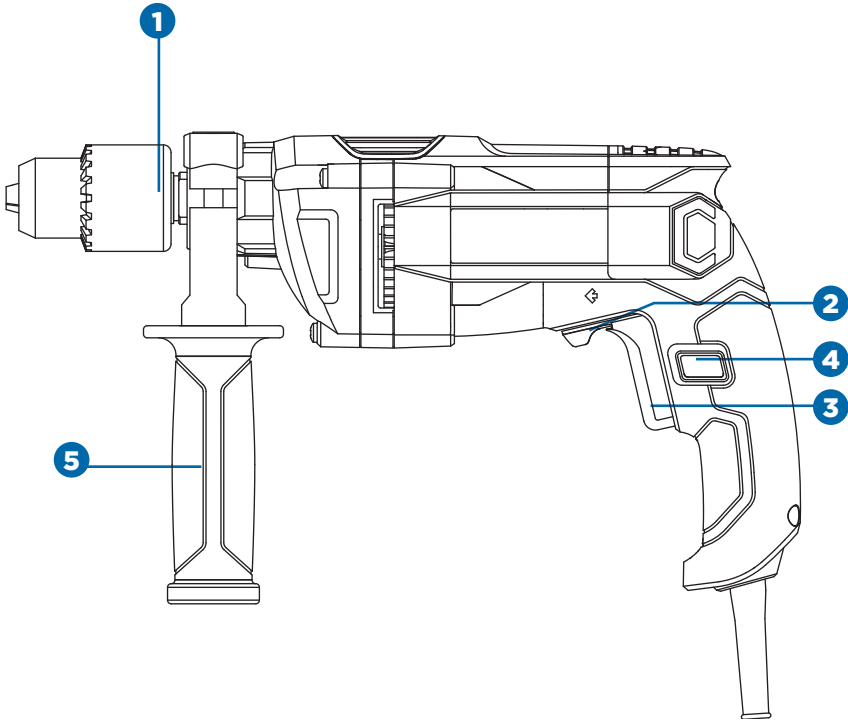
Wear dust mask



Don't use in the rain

No.	Description
1	Keyed chuck
2	Forward and reverse rotation

No.	Description
3	On/off switch with variable speed
4	Switch lock-on button
5	Auxiliary handle

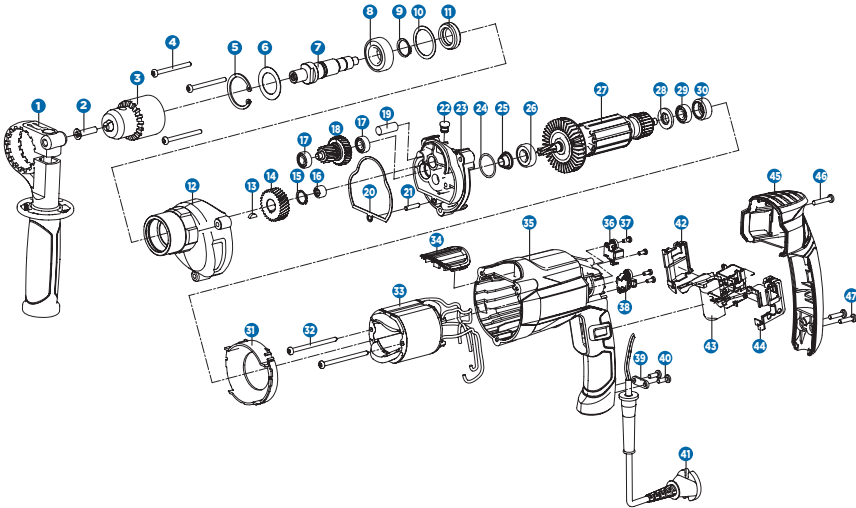


Not all the accessories illustrated or described are included in standard delivery.

ACCESSORIES

Chuck key	1
Auxiliary handle	1

We recommend that you purchase your accessories from the same store that sold you the tool. Use good quality accessories marked with a well-known brand name. Choose the type according to the work you intend to undertake. Refer to the accessory packaging for further details. Store personnel can assist you and offer advice.



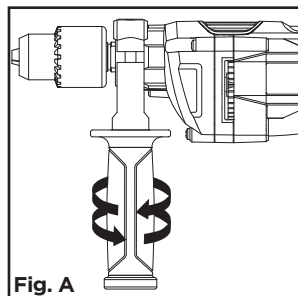
No.	Description
1	Auxiliary handle
2	Screw
3	Chuck
4	Self-tapping screw
5	Ring
6	Washer
7	Output spindle
8	Ball bearing race
9	Ring
10	Spring washer
11	Airproof
12	Gear case
13	Key
14	Gear
15	Snap ring
16	Needle bearing race
17	Ball bearing race
18	Middle gearshaft set
19	Wool felt
20	Seal washer
21	Pin
22	Rubber cap
23	Middle cover
24	O-ring

No.	Description
25	Oil shield
26	Ball bearing race
27	Motor
28	Dustproof ring
29	Ball bearing race
30	Bearing race sleeve
31	Baffle
32	Self-tapping screw
33	Stator
34	Cover
35	Housing
36	Brush 1
37	Self-tapping screw
38	Brush 2
39	Cord clip
40	Self-tapping screw
41	Cord & plug
42	Right bracket
43	Switch
44	Left bracket
45	Handle cover
46	Self-tapping screw
47	Self-tapping screw

INSTALLING THE AUXILIARY HANDLE (Fig. A)

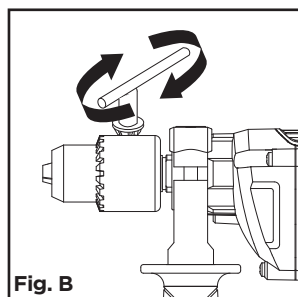
For your personal safety we recommend using the auxiliary handle at all times.

To fit the handle, loosen the bottom of the handle counter-clockwise and slide the clamping loop over the handle collar. Rotate the handle around the handle collar until the handle is in the desired position. Tighten fully. If you are right handed fit the handle as shown in Fig A. If you are left handed fit the handle in the opposite position.



MOUNTING BIT IN CHUCK (Fig. B)

When mounting the drill bit, insert bit between the chuck jaws as far as it will go. Ensure drill bit is in the centre of the chuck jaws. Using the chuck key provided, there are three holes in which the chuck key should be inserted. Tighten at all three holes, not just one. Your drill bit is now locked in the chuck. The bit can be removed by reversing the above procedure.



NOTE: Before using the tool, read the instruction book carefully.

OPERATING THE ON/OFF SWITCH (Fig. C)

Depress the switch to start the tool and release it to stop your tool.

Continuous use

Depress on/off switch (3) then lock-on button (4), release on/off switch first and lock-on button second. Your switch is now locked on for continuous use. To switch off your tool just release the on/off switch.

It is also a variable speed switch that delivers higher speed and torque with increased trigger pressure. Speed is controlled by the amount of switch trigger depression.

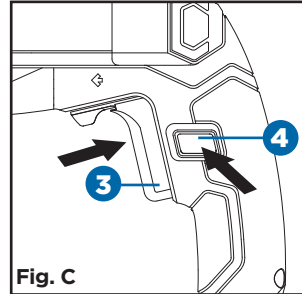


Fig. C

FORWARD AND REVERSE ROTATION CONTROL (FIG. D)

For drilling use forward rotation marked “←” (lever is moved to the left). Only use reverse rotation marked “→” (lever is moved to the right) to release a jammed drill bit.

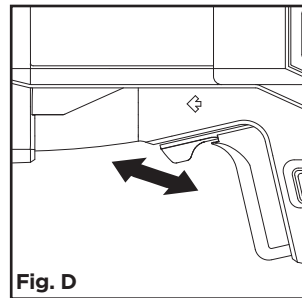


Fig. D



WARNING!

- Never change the direction of rotation when the tool is rotating. Wait until it has stopped.

WORKING HINTS FOR YOUR DRILL

- **Pilot holes**

When drilling a large hole in tough material (i.e. steel), try drilling a small pilot hole first before using a large drill bit.

- **Cool the motor**

If your power tool becomes too hot, set the speed to maximum and run no-load for 2-3 minutes to cool the motor.

MAINTAIN TOOLS WITH CARE

Remove the plug from the socket before carrying out any adjustment, servicing or maintenance.

Keep tools sharp and clean for better and safer performance. Follow instructions for lubricating and changing accessories. Inspect tool cords periodically and if damaged, have repaired by authorized service facility.

Your power tool requires no additional lubrication or maintenance. There are no user serviceable parts in your power tool. Never use water or chemical cleaners to clean your power tool. Wipe clean with a dry cloth. Always store your power tool in a dry place. Keep the motor ventilation slots clean. Keep all working controls free of dust.

If the supply cord is damaged, it must be replaced by the manufacturer, its service agent or similarly qualified persons in order to avoid a hazard.

TROUBLESHOOTING

- If your drill will not operate, check the power at the electrical plug.
- If the drill is not drilling properly, check the drill bit for sharpness and replace drill bit if worn. Check that the drill is set to forward rotation for normal use.
- If a fault can not be rectified return the drill to an authorized dealer for repair.

This MAXIMUM product is guaranteed for a period of 5 years from the date of original retail purchase against defects in workmanship and materials only and is subject to the following components:

- a) **Component A: Batteries/chargers can be repaired or replaced due to defects in workmanship and materials for a period of 3 years from the date of original retail purchase;**
- b) **Component B: The carrying case is guaranteed for a period of 1-year from the date of original retail purchase against defects in workmanship and materials.**
- c) **Component C: Accessories, including drill bits and saw blades, do not carry a warranty.**



Subject to the conditions and limitations described below, this product, if returned to us with proof of purchase within the stated warranty period and if covered under this warranty, will be repaired or replaced (with the same model, or one of equal value or specification), at the sole discretion of the Maximum Canada authorized repair centre ("Service Provider"). We will bear the cost of any repair or replacement and any costs of labour relating thereto.

These warranties are subject to the following conditions and limitations:

- a) a bill of sale verifying the purchase and purchase date must be provided;
- b) defects in workmanship and material to be assessed and determined by the Service Provider
- c) this warranty will not apply to any product or part thereof which is worn or broken or which has become inoperative due to abuse, misuse, accidental damage, neglect or lack of proper installation, operation or maintenance (as outlined in the applicable owner's manual or operating instructions);
- d) this warranty does not apply to normal wear and tear or to expendable parts or accessories (including drill bits and saw blades) that may be supplied with the product that by their nature have a limited life span and are expected to become inoperative or unusable after a reasonable period of use;
- e) this warranty will not apply to routine maintenance and consumable items such as, but not limited to, fuel, lubricants, vacuum bags, blades, belts, sandpaper, bits, fluids, rubber o-rings, tune-ups or adjustments;
- f) this warranty excludes the following components that may accompany your product:
 - (1) Batteries/chargers, which can be repaired or replaced due to defects in workmanship or materials for a period of 3 years from the date of original retail purchase. Any defects with such battery and/or charger will be subject to repair or replacement as determined by the Service Provider.
 - (2) The carrying case, which is only for a period of 1-year from the date of original retail purchase against defects in workmanship and materials.
 - (3) Accessories, including drill bits and saw blades, which do not carry a warranty of any kind.
- g) this warranty will not apply where damage is caused by repairs made or

attempted by anyone other than the Service Provider (i.e. persons not authorized by the manufacturer), and any such unauthorized repairs or attempted repairs shall void this warranty in its entirety;

- h) this warranty will not apply to any parts other than original parts, except to the extent that the retailer or manufacturer or persons authorized by either of them have repaired or replaced them;
- i) this warranty will not apply to any product that was sold to the original purchaser as a reconditioned or refurbished product (unless otherwise specified in writing);
- j) this warranty will not apply to any product or part thereof if any part from another manufacturer is installed therein or any repairs or alterations have been made or attempted by unauthorized persons;
- k) this warranty will not apply to normal deterioration of the exterior finish, such as, but not limited to, scratches, dents, paint chips, or to any corrosion or discolouring by heat, abrasive and chemical cleaners; and
- l) this warranty will not apply to component parts sold by and identified as the product of another company, which shall be covered under that product manufacturer's warranty, if any;
- m) any products replaced by the retailer in attempt to fulfill warranty obligations is subject to the original product warranty conditions and related time period as initiated by the original date of purchase; if product is purchased in Quebec, the warranty term will be extended for a period equal to the time during which the Quebec retailer possesses the product in attempt to fulfill warranty obligations; replaced product will not default to new product warranty conditions; and
- n) The retailer and manufacturer's sole obligation and the purchaser's sole remedy under this warranty shall be as set out herein. The warranties contained herein are not transferable and are given only to the purchaser. FURTHER, THE WARRANTIES SET OUT HEREIN ARE IN LIEU OF ALL OTHER WARRANTIES OR CONDITIONS, WHETHER EXPRESS, IMPLIED OR STATUTORY (INCLUDING SUCH AS ARISE UNDER THE SALE OF GOODS ACT OR THE INTERNATIONAL SALE OF GOODS ACT), ARISING OUT OF A COURSE OF DEALING OR USAGE OF TRADE OR OTHERWISE, INCLUDING, SUBJECT TO APPLICABLE LAW, ANY IMPLIED WARRANTIES OR CONDITIONS OF MERCHANTABILITY, MERCHANTABLE QUALITY, FITNESS OR ADEQUACY FOR A PARTICULAR PURPOSE OR USE, AND ALL OTHER SUCH WARRANTIES ARE EXPRESSLY DISCLAIMED BY THE RETAILER AND MANUFACTURER.

ADDITIONAL LIMITATIONS

This warranty applies only to the original purchaser and may not be transferred.

This warranty applies for a period of 5 years from the date of original retail purchase, as indicated on the bill of sale.

Neither the retailer, Maximum Canada, nor the manufacturer shall be liable for any other expense, loss or damage, including, without limitation, any indirect, incidental, consequential or exemplary damages arising in connection with the sale, use or inability to use this product.

Under no circumstances shall the retailer, Maximum Canada, or manufacturer be liable to the purchaser for any claim for (a) indirect, special, punitive, incidental, exemplary, or consequential damages, (b) compensation for loss of profits, anticipated revenue, savings or goodwill, or other economic loss of the purchaser, (c) exemplary, aggravated or punitive damages howsoever incurred, (d) contribution or set-off in respect of any claims against the purchaser, (e) any damages whatsoever relating to third party products or services or the purchaser's materials, or (f) any damages whatsoever relating to interruption, delays, errors or omissions; in each case under any theory of law or equity, arising out of or in any way related to this warranty, even if advised of the possibility thereof. Notwithstanding any provision herein or entitlement of the purchaser at law, in equity or otherwise, in no event shall the liability of the retailer or manufacturer under this warranty, whether in contract, tort, product liability or otherwise, exceed, in the aggregate, the amount paid by the purchaser to the retailer for the product to which this warranty applies.

NOTICE TO CONSUMER

This warranty gives you specific legal rights, and you may have other rights, which may vary from province to province. The provisions contained in this warranty are not intended to limit, modify, take away from, disclaim or exclude any statutory warranties set forth in any applicable provincial or federal legislation.

In addition to the 5-Year Limited Warranty, this MAXIMUM product is covered by our:

1-YEAR REPAIR WARRANTY

Maximum Canada will maintain this product and replace critical parts which have worn beyond reasonable use through normal use of such product, any time during the first year after purchase.

The following are excluded from this 1-Year Repair Warranty:

- a) Missing or damaged parts or components that are a result of abuse or misuse;
- b) Any wear and tear to non-critical parts or accessories that do not affect the core function of the product.

90-DAY SATISFACTION GUARANTEE

If you are not completely satisfied with the performance of your MAXIMUM product for any reason, you can return it within 90 days from the date of purchase with proof of purchase for exchange or a full refund.

Imported by MAXIMUM Canada Toronto, Canada M4S 2B8

Made in China

