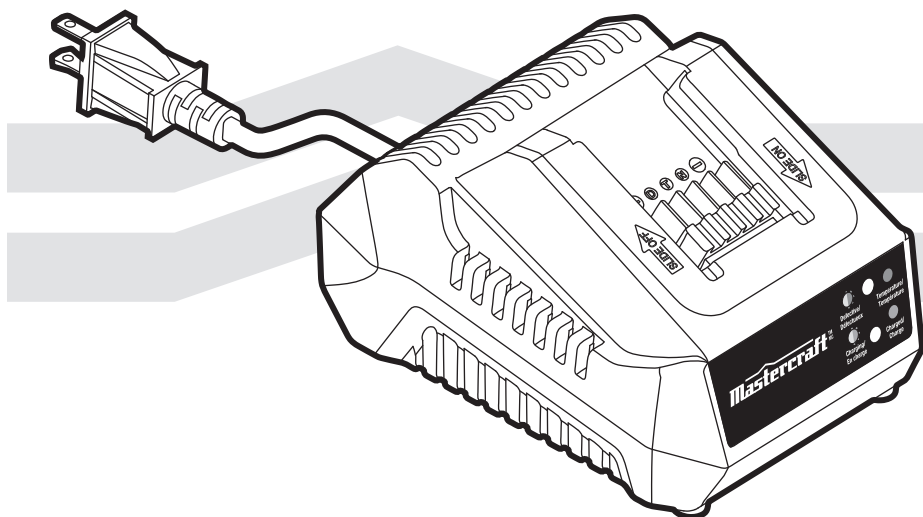


Mastercraft™



INSTRUCTION MANUAL

20V max* LITHIUM-ION BATTERY CHARGER

054-3126-6

If any parts are missing or damaged, or if you have any questions, please call our toll-free helpline at 1-800-689-9928.



Read and understand this instruction manual thoroughly before using the product. It contains important information for your safety as well as operating and maintenance advice.

Keep this instruction manual for future use. Should this product be passed on to a third party, then this instruction manual must be included.



TECHNICAL SPECIFICATIONS	3
SAFETY GUIDELINES	4–8
DESCRIPTION	9
OPERATING INSTRUCTIONS	10–12
MAINTENANCE	13
TROUBLESHOOTING	14
PARTS LIST	15
WARRANTY	16–17

CHARGER INPUT	120V ~ 60Hz 45W
CHARGING TIMES FOR BATTERIES	054-3124-0: 60 min 054-3125-8: 120 min
CHARGER WEIGHT	1 lb (0.45kg)
OPTIMUM CHARGING TEMPERATURE RANGE	0-40°C (32-104°F)

**WARNING!**

Safety symbols in this Instruction Manual are used to flag possible dangers. The safety symbols and their explanations require your full understanding. The safety warnings do not, by themselves, eliminate any danger, nor are they substitutes for proper accident prevention measures.

**WARNING!**

This Safety Alert Symbol indicates caution, warning, or danger. Failure to obey a safety warning can result in serious injury to yourself or others. To reduce the risk of injury, fire, or electric shock, always follow the safety precautions.

Know your tool

To operate this tool, carefully read this Instruction Manual and all labels affixed to the Charger before using it. Keep this Instruction Manual available for future reference.

Important

This tool should only be serviced by a qualified service technician. For more information, call the toll-free helpline at 1-800-689-9928.

Read all instructions thoroughly**Save these instructions****General power tool safety warnings****WARNING!**

Read all safety warnings and instructions. Failure to follow the warnings and instructions may result in electric shock, fire and/or serious injury.

Save all warnings and instructions for future reference.

The term “power tool” in the warnings refers to your mains-operated (corded) power tool or battery-operated (cordless) power tool.

Work area safety

- **Keep the work area clean and well lit.** Cluttered or dark areas invite accidents.
- **Do not operate power tools in explosive atmospheres, such as in the presence of flammable liquids, gases or dust.** Power tools create sparks, which may ignite the dust or fumes.
- **Keep children and bystanders away while operating a power tool.** Distractions can cause you to lose control.

Electrical safety

- **Power tool plugs must match the outlet.** Never modify the plug in any way. Do not use any adapter plugs with earthed (grounded) power tools. Unmodified plugs and matching outlets will reduce risk of electric shock.
- **Avoid body contact with earthed or grounded surfaces, such as pipes, radiators, ranges and refrigerators.** There is an increased risk of electric shock if your body is earthed or grounded.
- **Do not expose power tools to rain or wet conditions.** Water entering a power tool will increase the risk of electric shock.
- **Do not abuse the cord.** Never use the cord for carrying, pulling or unplugging the power tool. Keep the cord away from heat, oil, sharp edges or moving parts. Damaged or entangled cords increase the risk of electric shock.
- **When operating a power tool outdoors, use an extension cord suitable for outdoor use.** Use of a cord suitable for outdoor use reduces the risk of electric shock.
- **If operating a power tool in a damp location is unavoidable, use a ground-fault circuit interrupter (GFCI) protected supply.** Use of a GFCI reduces the risk of electric shock.

Personal safety

- **Stay alert, watch what you are doing and use common sense when operating a power tool.** Do not use tool while tired or under the influence of drugs, alcohol, or medication. A moment of inattention while operating power tools may result in serious personal injury.
- **Use personal protective equipment.** Always wear eye protection. Protective equipment such as dust mask, non-skid safety shoes, hard hat, or hearing protection, used for appropriate conditions, will reduce personal injuries.
- **Prevent unintentional starting.** Ensure that the switch is in the off-position before connecting to a power source and/or battery pack, picking up or carrying the tool. Carrying power tools with your finger on the switch or plugging in power tools that have the switch on invites accidents.
- **Remove any adjusting key or wrench before turning the power tool on.** A wrench or a key left attached to a rotating part of the power tool may result in personal injury.

- **Do not overreach.** Keep proper footing and balance at all times. This enables better control of the power tool in unexpected situations.
- **Dress properly.** Do not wear loose clothing or jewelry. Keep your hair, clothing and gloves away from moving parts. Loose clothes, jewelry or long hair can be caught in moving parts.
- **If devices are provided for the connection of dust extraction and collection facilities, ensure that these are connected and properly used.** Use of these devices can reduce dust-related hazards.

Power tool use and care

- **Do not force the power tool.** Use the correct power tool for your application. The correct power tool will do the job better and more safely at the rate for which it was designed.
- **Do not use the power tool if the switch does not turn it on and off.** Any power tool that cannot be controlled with the switch is dangerous and must be repaired.
- **Disconnect the plug from the power source and/or the battery pack from the power tool before making any adjustments, changing accessories, or storing power tools.** Such preventive safety measures reduce the risk of starting the power tool accidentally.
- **Store idle power tools out of the reach of children and do not allow persons unfamiliar with the power tool or these instructions to operate the power tool.** Power tools are dangerous in the hands of untrained users.
- **Maintain power tools.** Check for misalignment or binding of moving parts, breakage of parts and any other condition that may affect the power tool's operation. If damaged, have the power tool repaired before use. Many accidents are caused by poorly maintained power tools.
- **Keep cutting tools sharp and clean.** Properly maintained cutting tools with sharp cutting edges are less likely to bind and are easier to control.
- **Use the power tool, accessories, tool bits, etc., in accordance with these instructions, taking into account the working conditions and the work to be performed.** Use of the power tool for operations different from those intended could result in a hazardous situation.

Battery tool use and care

- **Recharge only with the charger specified by the manufacturer.** A charger that is suitable for one type of battery pack may create a risk of fire when used with another battery pack.
- **Use power tools only with specifically designated battery packs.** The use of any other battery pack may create a risk of injury and fire.
- **When the battery pack is not in use, keep it away from other metal objects, such as paper clips, coins, keys, nails, screws, or other small metal objects that can make a connection from one terminal to another.** Shorting the battery terminals together may cause burns or a fire.

- **Under abusive conditions, liquid may be ejected from the battery.** Avoid contact. If contact occurs, flush with water. If liquid comes into contact with the eyes, seek medical help. Liquid ejected from the battery may cause irritation or burns.

Service

- **Have your power tool serviced by a qualified repair person using only identical replacement parts.** This will ensure that the safety of the power tool is maintained.

Important safety instructions



WARNING!

Read and understand all instructions. Failure to follow all instructions listed below may result in electric shock, fire, and/or serious personal injury.



CAUTION!

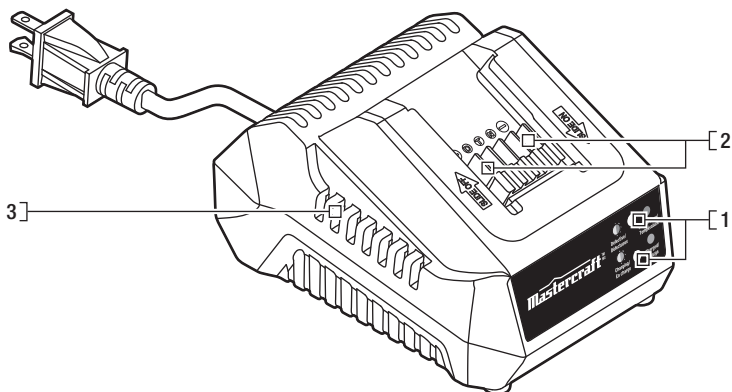
To reduce the risk of electric shock or damage to the charger and the battery, charge only recommend rechargeable batteries as specifically designated on your charger. Other types of batteries may burst, causing personal injury or damage.

- **For indoor use only.**
- **Dry location use only.**
- **Risk of fire and electric shock.**
- **Risk of injury.**
- **SAVE THESE INSTRUCTIONS** – This manual contains important safety and operating instructions for battery charger Model 054-3126-6.
- Before using battery charger, read all instructions and cautionary markings on battery charger, battery, and product using battery.
- **CAUTION** – To reduce risk of injury, **charge only Mastercraft® 054-3124-0, 054-3125-8 20V Rechargeable Battery Packs.** Other types of battery packs may burst, causing injury to persons and damage.
- To reduce risk of battery explosion, follow these instructions and those marked on the battery.
- Never charge a frozen battery.
- Do not operate charger in a closed-in area or restrict ventilation in any way.
- **Do not use the charger outdoors or expose it to wet or damp conditions.** Water entering the charger will increase the risk of electric shock.

- **Use of an attachment not recommended or sold by the battery-charger manufacturer may result in a risk of fire, electric shock or injury to persons.**
- **Do not abuse the cord or charger.** Never use the cord to carry the charger. Do not pull the charger cord to disconnect the plug from a receptacle. Damage to the cord or charger could occur and create an electric shock hazard. Replace damaged cords immediately.
- **Make sure that the cord is located so that it will not be stepped on or tripped over, come in contact with sharp edges or moving parts, or otherwise be subjected to damage or stress.** This will reduce the risk of accidental falls, which could cause injury and damage to the cord, which could then result in electric shock.
- **Keep the cord and charger away from heat to prevent damage to the housing or internal parts.**
- **Do not allow gasoline, oils, petroleum-based products, etc., to come in contact with plastic parts.** These materials contain chemicals that can damage, weaken, or destroy plastic.
- **Do not operate the charger with a damaged cord or plug, which could cause shorting and electric shock.** If damaged, have the charger repaired or replaced by a qualified service technician.
- **Do not operate the charger if it has received a sharp blow, been dropped, or has otherwise been damaged in any way.** Take it to a qualified service technician for an electrical check to determine if the charger is in good working order.
- **Do not disassemble the charger.** Take it to a qualified service technician when service or repair is required. Incorrect reassembly may result in a risk of electric shock or fire.
- **Unplug the charger from the electrical outlet before attempting any maintenance or cleaning to reduce the risk of electric shock.**
- **Disconnect the charger from the power supply when it is not in use.** This will reduce the risk of electric shock or damage to the charger if metal items should fall into the opening. It will also help prevent damage to the charger during a power surge.
- **Risk of electric shock. Do not touch the uninsulated portion of the output connector or uninsulated battery terminal.**
- **Save these instructions.** Refer to them frequently and use them to instruct others who may use this tool. If you lend this tool to someone else, also lend these instructions to them to prevent misuse of the product and possible injury.

Contents

Battery Charger, Instruction Manual

Know your 20V max* lithium-ion battery charger

No.	Description	No.	Description
1	LED lights	3	Air vents
2	Electric contacts		

Before attempting to use the charger, familiarize yourself with all of its operating features and safety requirements.

**WARNING!**

Do not allow familiarity with the charger to cause carelessness. Remember that one careless moment is enough to cause severe injury. Before attempting to use any tool, be sure to become familiar with all of the operating features and safety instructions.

When to charge the battery pack

The Lithium-Ion battery pack can be charged at any time and will not develop a “memory” when charged after only a partial discharge. It is not necessary to run down the battery pack charge before recharging.

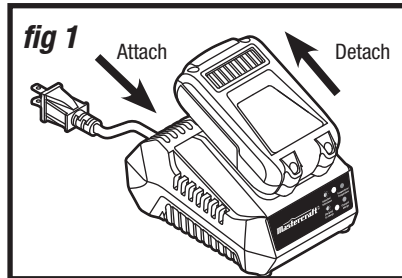
Remove the battery pack from the tool and recharge it when it is convenient for you and your job.

- You can “top-off” your battery pack’s charge before starting a big job or a long period of use.
- Due to Lithium-Ion’s fade-free properties, the only time it is necessary to charge the Lithium-Ion battery pack is when the pack has reached the end of its charge. To signal the end of charge, power to the tool will drop quickly. Charge the battery pack as needed.





How to charge the battery pack (fig 1)

A fully discharged battery pack will charge in about 60-120 minutes, depending on the battery, at a temperature between 0-40°C (32-104°F).

1. Charge the battery pack with the correct charger.
2. Connect the charger to a power supply.
3. Attach the battery pack to the charger by aligning the raised ribs of the battery pack with the slot in the charger. Slide the battery pack onto the charger (fig 1).
4. The charger will communicate with the battery pack circuitry to evaluate the condition of the battery pack.
5. The green LED light will flash continuously during normal charging.
6. After charging is complete, the green LED on the charger will remain on.
7. The battery pack will fully charge, but will not overcharge, if left on the charger.



LED functions of charger (fig 2)

LED Indicator	Battery Pack	Red LED	Green LED	Action
 Temperature	Hot/Cold battery	On	Off	Fast charge will begin when battery returns to between 5-40°C (41-104°F)
 Defective	Defective	Flashing	Off	Battery pack or charger is defective
 Charging	Charging	Off	Flashing	Charging
 Charged	Fully charged	Off	On	Charging is complete

Charging a hot battery pack

If the battery pack is above the normal temperature range, the red LED will illuminate and the green LED will be off. When the battery pack cools down to approximately 104°F (40°C), the charger will automatically begin charging.

Charging a cold battery pack

If the battery pack is below the normal temperature range, the red LED will illuminate and the green LED will be off. When the battery warms to a temperature of more than 41°F (5°C), the charger will automatically begin charging.

Defective battery

If the charger detects a problem, the red LED will begin flashing and the green LED will be off.

1. If registering as defective, remove and reinsert the battery pack in the charger. If the LED status reads “defective” a second time, try to charge a different battery pack.
2. If a different battery pack charges normally, dispose of the defective battery pack (see Maintenance section).
3. If a different battery pack also indicates “defective,” the charger may be defective.

Battery charging

If the battery pack is within the normal temperature range, the green LED will begin flashing and the red LED will be off.

Battery full

After the battery is fully charged, the green LED light on the charger will be on and the red LED light will be off.

NOTICE: The battery pack will fully charge, but will not overcharge, if left on the charger.

NOTICE: Charger may warm with several continuous charge cycles. This is part of the normal operation of the charge. Always charge in a well-ventilated area.

13

MAINTENANCE



WARNING!

To ensure safety and reliability, all repairs should be performed by a qualified service technician.



WARNING!

When servicing, use only identical replacement parts. The use of any other parts may create a hazard or cause damage to the product.



WARNING!

To avoid serious personal injury, always remove the battery pack from the tool when cleaning it or performing any maintenance.



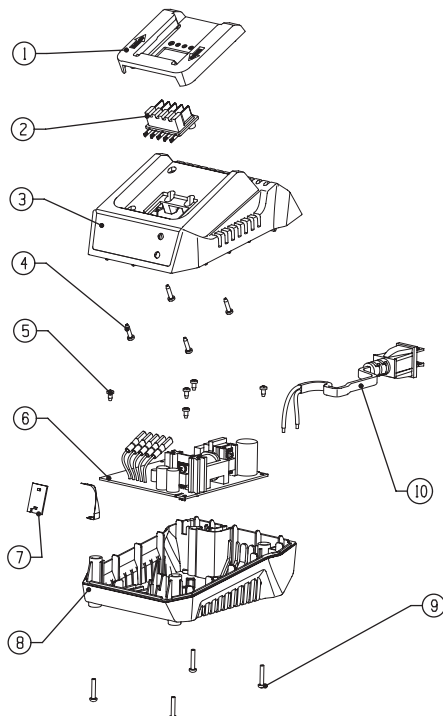
WARNING!

Always wear safety goggles or safety glasses with side shields when using compressed air to clean the tool. If the operation is dusty, also wear a dust mask.

PROBLEM	POSSIBLE CAUSES	SOLUTIONS
The battery pack isn't charging	The battery pack is not connected to the charger	Attach the battery pack to the charger again

If the problem remains unsolved after performing the checks described above, call the toll-free helpline at 1-800-689-9928.

Exploded view



No.	Part No.	Description	No.	Part No.	Description
1	3125529000	Drive Bracket	6	4890750000	PCB Assembly
2	2823639000	Wiring Harness Assembly	7	4890721000	PCB Assembly
3	3125527000	Upper Housing	8	3125528000	Lower Housing
4	5610012000	Tapping Screw	9	5610218000	Screw
5	5610016000	Tapping Screw	10	4810002000	Power Cord & Plug

If any parts are missing or damaged, or if you have any questions, please call the Toll-free Helpline, at 1-800-689-9928.



This Mastercraft product is guaranteed for **two (2) years from the date of original retail purchase** against defects in materials and workmanship, except for the following components

- a) Component A: Batteries, chargers and carrying case, which are guaranteed for a period of **2 years** from the date of original retail purchase against defects in workmanship and materials;
- b) Component B: Accessories, which are guaranteed for a period of **1-year** from the date of original retail purchase against defects in workmanship and materials.

Subject to the conditions and limitations described below, this product, if returned to us with proof of purchase within the stated warranty period, and if covered under this warranty, will be repaired or replaced (with the same model, or one of equal value or specification) at our option. We will bear the cost of any repair or replacement and any costs of labour relating thereto.

These warranties are subject to the following conditions and limitations:

- a) a bill of sale verifying the purchase and the purchase date must be provided;
- b) this warranty will not apply to any product or part thereof that is worn or broken or that has become inoperative due to abuse, misuse, accidental damage, neglect or lack of proper installation, operation or maintenance (as outlined in the applicable owner's manual or operating instructions), or that is being used for industrial, professional, commercial or rental purposes;
- c) this warranty will not apply to normal wear and tear or to expendable parts or accessories that may be supplied with the product and that are expected to become inoperative or unusable after a reasonable period of use;
- d) this warranty will not apply to routine maintenance and consumable items, including but not limited to fuel, lubricants, vacuum bags, blades, belts, sandpaper, bits, fluids, tune-ups or adjustments;
- e) this warranty will not apply where damage is caused by repairs made or attempted by others (i.e. persons not authorized by the manufacturer);

- f) this warranty will not apply to any product that was sold to the original purchaser as a reconditioned or refurbished product (unless otherwise specified in writing);
- g) this warranty will not apply to any product or part thereof if any part from another manufacturer is installed therein or any repairs or alterations have been made or attempted by unauthorized persons;
- h) this warranty will not apply to normal deterioration of the exterior finish, including but not limited to scratches, dents, paint chips, or to any corrosion or discolouring caused by heat, abrasive and chemical cleaners; and
- i) this warranty will not apply to component parts sold by and identified as the product of another company, which shall be covered under the product manufacturer's warranty, if any.

Additional Limitations

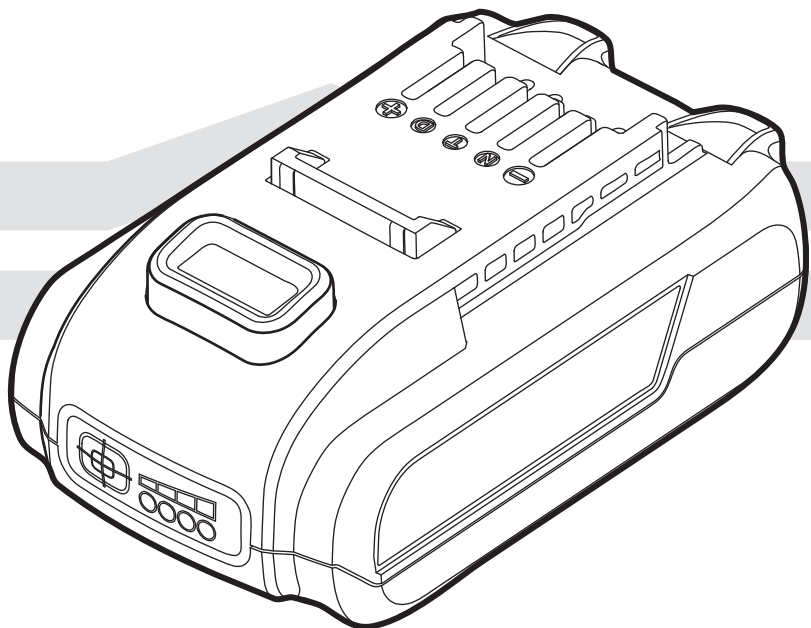
This warranty applies only to the original purchaser and cannot be transferred. Neither the retailer nor the manufacturer shall be liable for any other expense, loss or damage, including but not limited to any indirect, incidental, consequential or exemplary damages arising in connection with the sale, use or inability to use this product.

Notice to the Consumer

This warranty gives you specific legal rights, and you may have other rights, which may vary from province to province. The provisions contained in this warranty are not intended to limit, modify, take away from, disclaim or exclude any statutory warranties set forth in any applicable provincial or federal legislation.

IMPORTED BY MASTERCRAFT CANADA TORONTO, CANADA M4S 2B8

MastercraftTM



INSTRUCTION MANUAL

20V max* (1.3 AH) LITHIUM-ION RECHARGEABLE BATTERY

054-3124-0

If any parts are missing or damaged, or if you have any questions, please call our toll-free helpline at 1-800-689-9928.



Read and understand this instruction manual thoroughly before using the product. It contains important information for your safety as well as operating and maintenance advice.

Keep this instruction manual for future use. Should this product be passed on to a third party, then this instruction manual must be included.



TECHNICAL SPECIFICATIONS	3
SAFETY GUIDELINES	4–6
DESCRIPTION	7
OPERATING INSTRUCTIONS	8–10
MAINTENANCE	11–12
PARTS LIST	13
WARRANTY	14–15

BATTERY TYPE	Lithium-Ion
BATTERY PACK VOLTAGE	20V max* DC
CAPACITY	1.3 Ah
CHARGE TIME	60 min.
BATTERY PACK WEIGHT	15 oz (0.43 kg)
BATTERY CHARGER	054-3126-6 5331

*Maximum battery voltage without workload; with workload nominal voltage is 18V.

Rules for safe operation

Know your tool

To operate this tool, carefully read this Instruction Manual and all labels affixed to the battery pack before using. Keep this Instruction Manual available for future reference.

Important

This tool should only be serviced by a qualified service technician. For more information, call the toll-free helpline, at 1-800-689-9928.

Read all instructions thoroughly

Safety guidelines for power tools



WARNING!

Read all safety warnings and all instructions. Failure to follow all warnings and instructions may result in electric shock, fire and/or serious injury.

Save all warnings and instructions for future reference.

The term “power tool” in the warnings refers to your mains operated (corded) power tool or battery operated (cordless) power tool.

Work Area Safety

- **Keep the work area clean and well lit.** Cluttered or dark areas invite accidents.
- **Do not operate power tools in explosive atmospheres, such as in the presence of flammable liquids, gases or dust.** Power tools create sparks which may ignite the dust or fumes.
- **Keep children and bystanders away while operating a power tool.** Distractions can cause you to lose control.

Electrical Safety

- **Avoid body contact with earthed or grounded surfaces, such as pipes, radiators, ranges and refrigerators.** There is an increased risk of electric shock if your body is earthed or grounded.
- **Do not expose power tools to rain or wet conditions.** Water entering a power tool will increase the risk of electric shock.

Battery Tool Use And Care

- **Recharge only with the charger specified by the manufacturer.** A charger that is suitable for one type of battery pack may create a risk of fire when used with another battery pack.
- **Use power tools only with specifically designated battery packs.** Use of any other battery packs may create a risk of injury and fire.
- **When the battery pack is not in use, keep it away from other metal objects, like paper clips, coins, keys, nails, screws or other small metal objects that can make a connection from one terminal to another.** Shorting the battery terminals together may cause burns or a fire.
- **Under abusive conditions, liquid may be ejected from the battery; avoid contact.** If contact accidentally occurs, flush with water. If liquid contacts eyes, also seek medical help. Liquid ejected from the battery may cause irritation or burns.

Service

- **Have your battery pack serviced by a qualified repair person using only identical replacement parts.** This will ensure that the safety of the power tool is maintained.

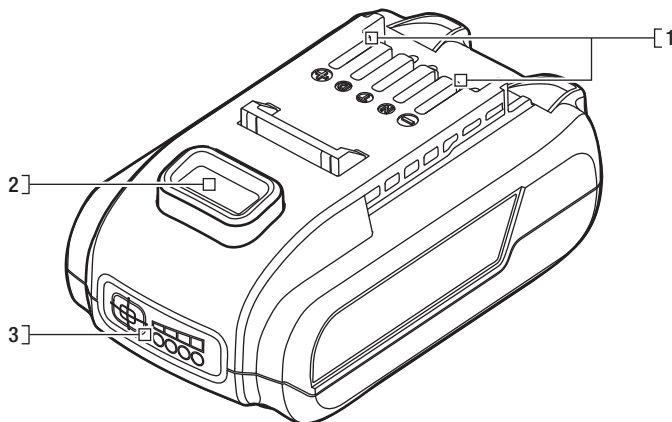
Specific safety guidelines for battery pack

USE THIS BATTERY PACK ONLY WITH THE CHARGER LISTED.

BATTERY PACK	CHARGER
054-3124-0	054-3126-6/5331

- **Know your power tool.** Read the Instruction Manual carefully. Learn the tool's applications and limitations, as well as the specific potential hazards related to this tool. Following this rule will reduce the risk of electric shock, fire, or serious injury.
- **Do not place the battery near fire or heat.** This will reduce the risk of explosion and possible injury.
- **Do not crush, drop or damage the battery pack.** Do not use a battery pack or charger that has been dropped or received a sharp blow. A damaged battery is subject to explosion. Properly dispose of a dropped or damaged battery immediately.
- **Batteries vent hydrogen gas and can explode in the presence of a source of ignition, such as a pilot light.** To reduce the risk of serious personal injury, never use any cordless product in the presence of an open flame. An exploded battery can propel debris and chemicals. If exposed, flush with water immediately.
- **Do not charge the battery pack in a damp or wet location.** Following this rule will reduce the risk of electric shock.
- **For best results, your battery pack should be charged in a location where the temperature is more than 0°C (32°F) but less than 40°C (104°F).** Do not store the battery pack outside or in vehicles.
- **Under extreme usage or temperature conditions, battery leakage may occur.** If liquid comes in contact with your skin, wash immediately with soap and water, then neutralize with lemon juice or vinegar. If liquid gets in your eyes, flush them with clean water for at least 10 minutes, and then seek immediate medical attention. Following this rule will reduce the risk of serious personal injury.
- **Do not let gasoline, oils, petroleum-based products, etc. come in contact with plastic parts.** They contain chemicals that can damage, weaken or destroy plastic.
- **Have your battery pack serviced by a qualified repair person using only identical replacement parts.** This will ensure that the safety of the battery pack is maintained.
- **Save these instructions.** Refer to them frequently and use them to instruct others who may use this tool. If you lend someone this tool, lend them these instructions also to prevent misuse of the product and possible injury.

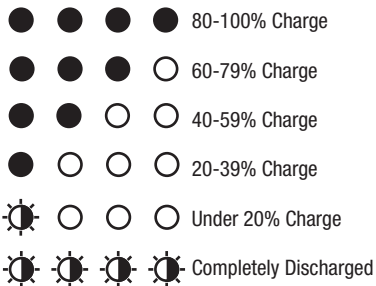
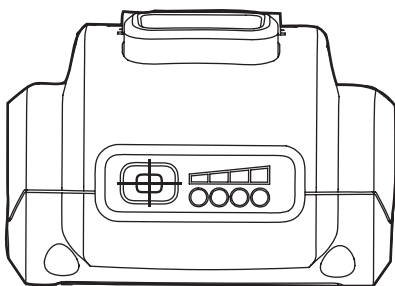
Know your lithium-ion rechargeable battery



No.	Description	No.	Description
1	Electrical Contacts	3	Fuel Gauge
2	Battery-Release Button		

Before using this product, familiarize yourself with all operating features and safety rules.

Fuel gauge



This Lithium-Ion battery pack is equipped with a Fuel Gauge, which displays the remaining charge of the battery pack. Press the Fuel Gauge button to display the LED lights. The LED lights will stay lit for approximately 4 seconds.

NOTE: The Fuel Gauge can be used when the battery pack is attached to or removed from the tool.

Low capacity warning

If one LED on the Fuel Gauge begins to flash, the battery pack's charge is under 20% capacity and should be recharged.

Unlike other battery types, Lithium-Ion batteries deliver fade-free power for their entire run time. The tool will not experience a slow, gradual loss of power as you work. To signal that the battery pack is at the end of its run time and needs to be charged, power to the tool will drop quickly. The Fuel Gauge will begin to display four flashing LED lights when it is completely discharged. When this happens, remove the tool from the work piece, remove the battery pack and charge the battery pack as needed.

Battery protection

To protect the battery pack from damage and prolong its life, the battery pack's circuitry will turn off the battery pack if it becomes overloaded or if the temperature becomes too high during use. This may happen in extremely high torque, binding and stalling situations. The battery pack will begin normal operation when it cools down.

The Fuel Gauge will display four flashing LED lights if the circuitry detects a momentary overload. You can conveniently reset the battery pack by releasing the power tool trigger switch. Press the Fuel Gauge button again to display the remaining charge.

NOTE: If the Fuel Gauge continues to flash four LED lights after reset, place the battery pack on the charger to evaluate the battery pack condition.

NOTE: A significantly reduced run time after fully charging the battery pack indicates that the battery pack is near the end of its usable life and must be replaced.

Cold weather operation

When the battery pack is very cold, it may “pulse” for the first minute of use to warm itself. Put the battery pack on a tool and use the tool in a light application. After about a minute, the battery pack will have warmed itself and will operate normally.

When to charge the battery pack

NOTE: This Lithium-Ion battery pack is shipped partially charged. Before using it the first time, fully charge the battery pack.

The Lithium-Ion battery pack can be charged at any time and will not develop a “memory” when charged after only a partial discharge. It is not necessary to run down the battery pack charge before recharging. Remove the battery pack from the tool when it is convenient for you and your job.

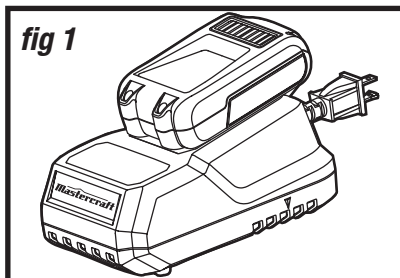
1. Use the Fuel Gauge to determine when you need to recharge the battery pack.
2. You can “top-off” your battery pack's charge before starting a big job or long period of use.
3. Due to Lithium-Ion's fade-free properties, the only time it is necessary to charge the Lithium-Ion battery pack is when the pack has reached the end of its charge. To signal the end of charge, power to the tool will drop quickly. Charge the battery pack as needed.

How to charge the battery pack

NOTE: This Lithium-Ion battery pack is shipped partially charged. Before using it the first time, fully charge the battery pack.

A fully discharged battery pack will charge about 60 minutes in a surrounding temperature between 0°C (32° F) and 40°C (104° F).

1. Charge the Lithium-Ion battery pack with the correct charger (Mastercraft 054-3126-6, 5331).
2. Connect the charger to a power supply.
3. Attach the battery pack to the charger by aligning the raised ribs of the battery pack with the slot in the charger. Slide the battery pack onto the charger (fig 1).
4. The charger will communicate with the battery pack's circuitry to evaluate the condition of the battery pack.
5. The Fuel Gauge LED lights will cycle from right to left during charging. This is part of the normal charging operation.
6. After charging is complete, the green LED on the charger will be on and the Fuel Gauge LED lights will turn off. The Fuel Gauge LED lights will not be displayed when the Fuel Gauge button is pressed while the battery pack is on the charger.
7. The battery pack will fully charge, but will not overcharge, if left on the charger.



**WARNING!**

To ensure safety and reliability, all repairs should be performed by a qualified service technician.

**WARNING!**

When servicing, use only identical replacement parts. The use of any other parts may create a hazard or cause damage to the product.

**WARNING!**

To avoid serious personal injury, always remove the battery pack from the tool when cleaning or performing any maintenance.

**WARNING!**

Always wear safety goggles or safety glasses with side shields when using compressed air to clean the tool. If the operation is dusty, also wear a dust mask.

Batteries:

The battery pack is equipped with Lithium-Ion rechargeable batteries. The duration of use from each charge will depend on the type of work performed.

This battery pack has been designed to provide maximum trouble-free life. Like all batteries, they will eventually wear out. Do not disassemble the battery pack or attempt to replace the batteries. Handling of the batteries, especially when wearing rings and jewelry could result in a serious burn.

- To obtain the longest possible battery life, read and understand the Instruction Manual.
- It is good practice to unplug the charger and remove the Lithium-Ion battery pack when not in use.

FOR LITHIUM-ION BATTERY PACK STORAGE LONGER THAN 30 DAYS:

- Store the Lithium-Ion battery pack where the temperature is below 26°C (80°F) and free of moisture.
- Store Lithium-Ion battery packs in a 30%-50% charged condition.
- Every six months of storage, fully charge the Lithium-Ion battery pack.
- Exterior may be cleaned with a cloth or soft non-metallic brush.

Please see page 8 for disposal instructions.

Battery pack removal and preparation for recycling

To preserve natural resources, please recycle or dispose of batteries properly. This product contains lithium-ion batteries. Provincial or municipal laws may prohibit disposal of Lithium-Ion batteries in ordinary trash. Consult your local waste authority for information regarding available recycling and/or disposal options.



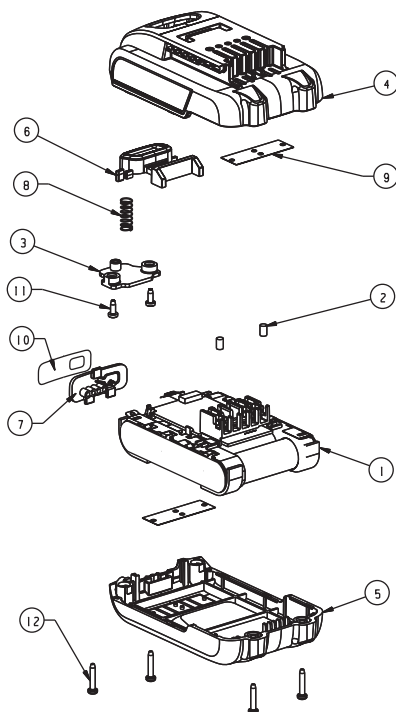
WARNING!

Upon removal of the battery pack for disposal or recycling, cover the battery pack's terminals with heavy-duty adhesive tape. Do not attempt to destroy or disassemble the battery pack or remove any of its components. Lithium-Ion batteries must be recycled or disposed of properly. Also, never touch both terminals with metal objects and/or body parts, as short circuit may result. Keep away from children. Failure to comply with these warnings could result in fire and/or serious injury.

13

PARTS LIST

Exploded view



No.	Part No.	Description	No.	Part No.	Description
01	2770231000	Battery Assembly	07	3126468000	Power Indicator Cover
02	3121038000	Rubber Stick	08	3660522000	Compression Spring
03	3126204000	Plate	09	3704001000	Dust Cover
04	3126465000	Power Pack Cover	10	4870487000	Film Switch
05	3126466000	Power Pack Housing	11	5610010000	Tapping Screw
06	3126467000	Battery-Release Button	12	5610241000	Screw

If any parts are missing or damaged, or if you have any questions, please call the Toll-free Helpline, at 1-800-689-9928.



This Mastercraft product is guaranteed **two (2) years from the date of original retail purchase** against defects in materials and workmanship.

Subject to the conditions and limitations described below, this product, if returned to us with proof of purchase within the stated warranty period, and if covered under this warranty, will be repaired or replaced (with the same model, or one of equal value or specification), at our option. We will bear the cost of any repair or replacement and any costs of labour relating thereto.

These warranties are subject to the following conditions and limitations:

- a) A bill of sale verifying the purchase and purchase date must be provided;
- b) This warranty will not apply to any product or part thereof that is worn or broken or that has become inoperative due to abuse, misuse, accidental damage, neglect or lack of proper installation, operation or maintenance (as outlined in the applicable Instruction Manual or operating instructions) or that is being used for industrial, professional, commercial or rental purposes;
- c) This warranty will not apply to normal wear and tear or to expendable parts or accessories that may be supplied with the product that are expected to become inoperative or unusable after a reasonable period of use;
- d) This warranty will not apply to routine maintenance and consumable items, including but not limited to fuel, lubricants, vacuum bags, blades, belts, sandpaper, bits, fluids, tune-ups or adjustments;
- e) This warranty will not apply where damage is caused by repairs made or attempted by others (*i.e., persons not authorized by the manufacturer*);
- f) This warranty will not apply to any product that was sold to the original purchaser as a reconditioned or refurbished product (unless otherwise specified in writing);
- g) This warranty will not apply to any product or part thereof if any part from another manufacturer is installed therein or any repairs or alterations have been made or attempted by unauthorized persons;

15

WARRANTY

- h) This warranty will not apply to normal deterioration of the exterior finish, including but not limited to scratches, dents, paint chips, or to any corrosion or discolouring by heat, abrasive and chemical cleaners;
- i) This warranty will not apply to component parts sold by and identified as the product of another company, which shall be covered under the product manufacturer's warranty.

Additional limitations

This warranty applies only to the original purchaser and may not be transferred. Neither the retailer nor the manufacturer shall be liable for any other expense, loss or damage, including, without limitation, any indirect, incidental, consequential or exemplary damages arising in connection with the sale, use or inability to use this product.

Notice to Consumer

This warranty gives you specific legal rights, and you may have other rights, which may vary from province to province. The provisions contained in this warranty are not intended to limit, modify, take away from, disclaim or exclude any statutory warranties set forth in any applicable provincial or federal legislation.

IMPORTED BY MASTERCRAFT CANADA TORONTO, CANADA M4S 2B8



20V max* LITHIUM-ION 1.3 AH RECHARGEABLE BATTERY - 054-3124-0