

MAXIMUMTM

Pro-grade Heat Gun with LCD



Model No. 054-0403-4

IMPORTANT:

Please read this manual carefully before using this product, and save it for reference.

**INSTRUCTION
MANUAL**

TABLE OF CONTENTS

TECHNICAL SPECIFICATIONS	4
GENERAL SAFETY WARNINGS	5
ADDITIONAL SAFETY RULES FOR YOUR HEAT GUN	7
SYMBOLS	8
KEY PARTS DIAGRAM	9
ACCESSORIES	11
PARTS LIST	12
OPERATING INSTRUCTIONS	14
MAINTENANCE	18
TROUBLESHOOTING	19
WARRANTY	20

NOTE: If any parts are missing or damaged, or if you have any questions, please call our toll-free helpline at 1-888-670-6682.



SAVE THESE INSTRUCTIONS

This manual contains important safety and operating instructions. Read all instructions and follow them with use of this product.

TECHNICAL SPECIFICATIONS

VOLTAGE	120 V 60 Hz AC
POWER INPUT	15A
TEMPERATURE/FLOW RATE	I = 120 — 1100°F (50 — 600°C), 8.1 CFM (300 L/min) II = 120 — 1100°F (50 — 600°C), 13.5 CFM (500 L/min)
PROTECTION CLASS	□ /II
CORD LENGTH	10' (3 m)
MACHINE WEIGHT	2 lb 7 oz (1.1 kg)

PERSONS REMOVING PAINT SHOULD FOLLOW THESE GUIDELINES:

- 1) Move the workpiece outdoors. If this is not possible, keep the work area well ventilated. Open the windows and put an exhaust fan in one of them. Be sure the fan is moving the air from inside to outside.
- 2) Remove or cover any carpets, rugs, furniture, clothing, cooking utensils and air ducts.
- 3) Place drop cloths in the work area to catch any paint chips or peelings. Wear protective clothing such as extra work shirts, overalls and hats.



WARNING!

Read all safety warnings and instructions. Failure to follow the warnings and instructions may result in electric shock, fire and/or serious injury.

Save all warnings and instructions for future reference.



WARNING! This product may contain lead, phthalate or other chemicals known to cause cancer, birth defects and other reproductive harm. Please wash your hands after use.

Hidden areas such as behind walls, ceilings, floors, soffit boards and other panels may contain flammable materials that could be ignited by the heat gun when working in these locations. The ignition of these materials may not be readily apparent and could result in property damage and injury to persons.

When working in these locations, keep the heat gun moving in a back-and-forth motion. Lingering or pausing in one spot could ignite the panel or the material behind it.



WARNING!

Extreme care should be taken when stripping paint. The peelings, residue and vapours of paint may contain lead, which is poisonous. Any pre-1977 paint may contain lead and paint applied to homes prior to 1950 is likely to contain lead. Once deposited on surfaces, hand to mouth contact can result in the ingestion of lead. Exposure to even low levels of lead can cause irreversible brain and nervous system damage; young and unborn children are particularly vulnerable.

Before beginning any paint removal process you should determine whether the paint you are removing contains lead. This can be done by your local health department or by a professional who uses a paint analyzer to check the lead content of the paint to be removed. **LEAD-BASED PAINT SHOULD ONLY BE REMOVED BY A PROFESSIONAL AND SHOULD NOT BE REMOVED USING A HEAT GUN.**

- 4) Work in one room at a time. Furnishings should be removed or placed in the centre of the room and covered. Work areas should be sealed off from the rest of the dwelling by sealing doorways with drop cloths.
- 5) Children, pregnant or potentially pregnant women and nursing mothers should not be present in the work area until the work is done and all clean up is complete.
- 6) Wear a dust respirator mask or a dual filter (dust and fume) respirator mask which has been approved by the Occupational Safety and Health Administration (OSHA), the National Institute of Safety and Health (NIOSH), or the United States Bureau of Mines. These masks and replaceable filters are readily available at major hardware stores. Be sure the mask fits. Beards and facial hair may keep masks from sealing properly. Change filters often. DISPOSABLE PAPER MASKS ARE NOT ADEQUATE.
- 7) Use caution when operating the heat gun. Keep the heat gun moving as excessive heat will generate fumes which can be inhaled by the operator.
- 8) Keep food and drink out of the work area. Wash hands, arms and face and rinse mouth before eating or drinking. Do not smoke or chew gum or tobacco in the work area.
- 9) Clean up all removed paint and dust by wet mopping the floors. Use a wet cloth to clean all walls, sills and any other surface where paint or dust is clinging. DO NOT SWEEP, DRY DUST OR VACUUM. Use a high-phosphate detergent or trisodium phosphate (TSP) to wash and mop areas.
- 10) At the end of each work session put the paint chips and debris in a double plastic bag, close it with tape or twist ties and dispose of properly.
- 11) Remove protective clothing and work shoes in the work area to avoid carrying dust into the rest of the dwelling. Wash work clothes separately. Wipe shoes off with a wet rag that is then washed with the work clothes. Wash hair and body thoroughly with soap and water.

ADDITIONAL SAFETY WARNINGS FOR HEAT GUN

1. This appliance has a polarized plug (one blade is wider than the other). To reduce the risk of electric shock, this plug is intended to fit in a polarized outlet only one way. If the plug does not fit fully in the outlet, reverse the plug. If it still does not fit, contact a qualified electrician. Do not modify the plug in any way.
2. Always allow the heat gun to cool before storing. The hot nozzle can cause damage.
3. Never attempt to use the heat gun to dry animals, clothing or hair.
4. Don't leave the heat gun unattended when in use.
5. This product is designed for light domestic use only; it is not designed for industrial purposes. Even though every care has been taken to make the heat gun safe, accidents can happen. By following the simple safety guide, you can avoid serious accidents.
6. Be aware that heat may be conducted to combustible materials that are out of sight.
7. **DOUBLE INSULATION** - When servicing, use only identical replacement parts.
8. To reduce the risk of fire or electric shock, do not expose this product to rain or moisture. Store indoors. Read instruction manual before using.
9. If the supply cord is damaged, it must be replaced by special assembly available from a service agent.

SYMBOLS

To reduce the risk of injury, user must read instruction manual



Double insulation



Warning



Wear eye protection



Wear dust mask



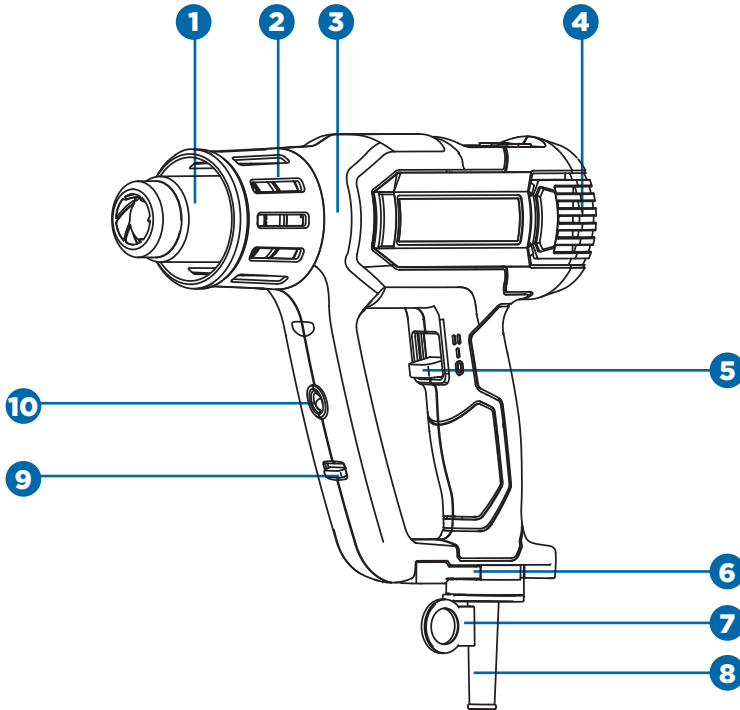
Don't use in the rain



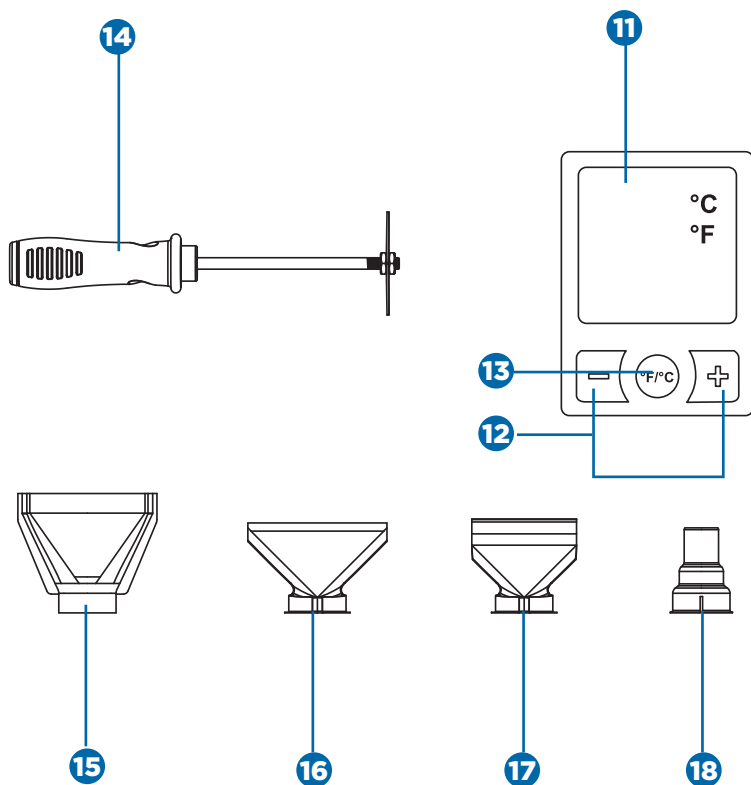
For indoor use only

No.	Description
1.	Wind pipe
2.	Heat protection guard
3.	Main body
4.	Air cooling window
5.	On/off switch
6.	Stand supporter
7.	Hook
8.	Power cord
9.	LED light switch

No.	Description
10.	LED light cover
11.	LCD cover
12.	Temperature control button
13.	°F/°C button
14.	Scraper
15.	Flat nozzle
16.	Glass protection nozzle
17.	Hook nozzle
18.	Concentration nozzle



KEY PARTS DIAGRAM

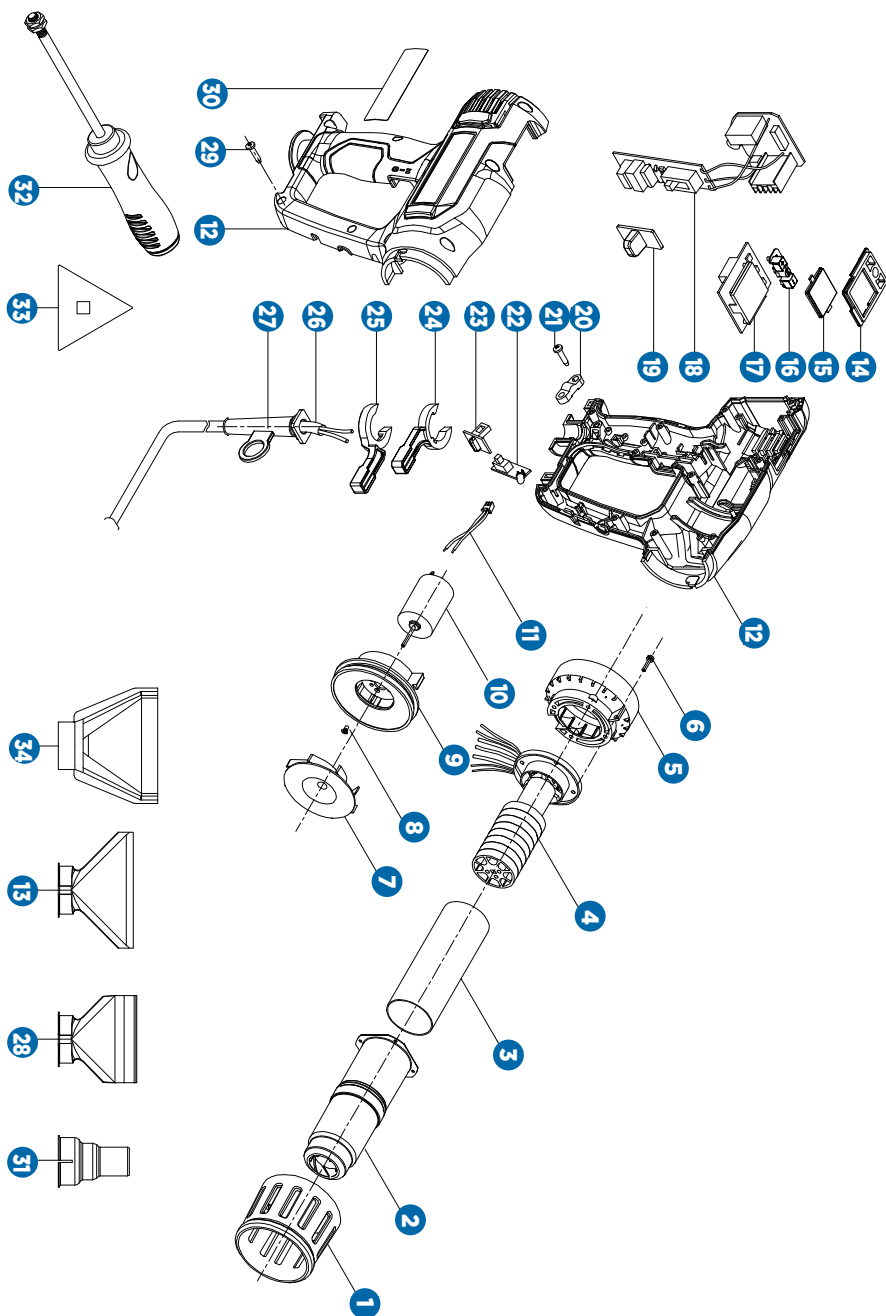


ACCESSORIES

Scraper	1
Glass protection nozzle	1
Flat nozzle	1
Hook nozzle	1
Concentration nozzle	1

We recommend that you purchase your accessories from the same store that sold you the tool. Use good-quality accessories marked with a well-known brand name. Choose the type according to the work you intend to undertake. Refer to the accessory packaging for further details. Store personnel can assist you and offer advice.

PARTS LIST



No.	Description
1	Heat-proof cover
2	Wind pipe
3	Mica paper
4	Heating element
5	Commutate cover
6	Screw M2.5X12
7	Fan
8	Screw M2.5X5
9	Motor holder
10	Motor
11	Wire
12	Left/right housing
13	Glass protection nozzle
14	Push-button
15	Push-button cover
16	Push-button
17	Window

No.	Description
18	PCB
19	Switch button
20	Cable clip
21	Screw ST4x16
22	LED board
23	LED switch
24	Right support foot
25	Left support foot
26	Cable
27	Cable sleeve
28	Hook nozzle
29	Screw ST3x14
30	Rated label 2
31	Concentration nozzle
32	Plastic handle
33	Iron triangle
34	Flat nozzle

BEFORE USING THE TOOL

Before starting the job it is advisable to test the workpiece for the ideal temperature to use. The description below gives an indication of the likely heat settings required but always start with the low heat setting.

The distance between the nozzle and the workpiece will vary according to the material being worked on but this should always be at least 2" (5 cm) or more on any heat setting.

All applications, with the exception of removing paint from the window frames, can be performed without using a nozzle; however, for best results nozzles are recommended.

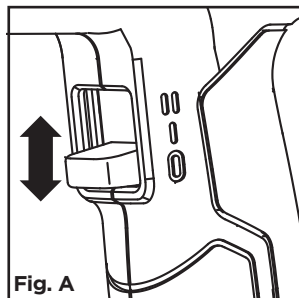


Fig. A

PUTTING INTO OPERATION (See Fig. A)

1. SWITCHING ON/OFF

Switching on:

To put into operation, slide the on/off switch (5) to position I or II.

Switching off:

To switch off, slide the on/off switch (5) to position 0.

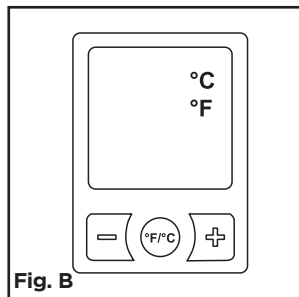


Fig. B

2. SETTING THE AIR FLOW AND TEMPERATURE (See Fig. B)

The switch (5) can be set to two blower settings. Suitable airflow and temperature combinations can be selected according to the applications.

I = 120 — 1100°F (50 — 600°C), 8.1 CFM (300 L/min)

II = 120 — 1100°F (50 — 600°C), 13.5 CFM (500 L/min)

The air setting I is suitable for bending plastic and heat-shrinking plastic.

The air setting II is suitable for stripping paint and defrosting pipes.

Temperature can be adjusted in increments of 20°F (10°C) from 120°F (50°C) to 1100°F (600°C) by pressing the temperature control button (12) on the LCD cover (11).

°F or °C can be selected by pressing °F/°C.



NOTE: Before using the tool, read the instruction book carefully.

3. NOZZLE SELECTION

The kit is supplied with 4 different nozzles which can be used as follows:

1) Concentration nozzle

This nozzle directs a concentrated heat flow to the workpiece. It is ideal when removing paint in awkward corners, crevices, mouldings, beading, architraves or whenever precise paint removal is required.

2) Flat Nozzle

This nozzle directs a long narrow heat pattern to the workpiece and is ideal for removing paint or varnish from large flat surfaces such as skirting boards, doors, stairs etc. It should be used in conjunction with a flat scraper. Vinyl tiles can be removed by softening the tile and adhesive.

3) Glass Protection Nozzle

This nozzle deflects the heat away from glass or other fragile areas and back onto the workpiece.

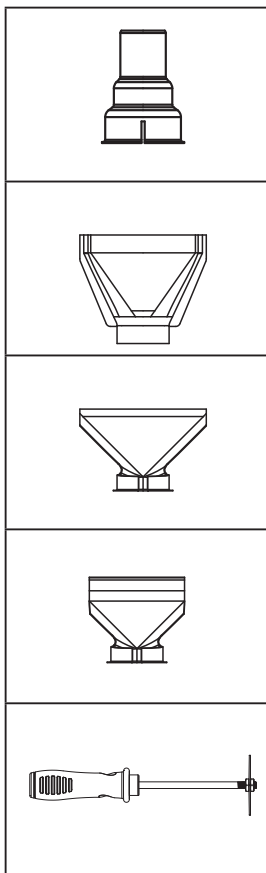
4) Hook Nozzle

This nozzle disperses the heat flow evenly around the whole workpiece. It is ideal for defrosting frozen pipes, soldering pipe work, bending plastics and heat-shrinking electrical parts.

4. SHAVE HOOK

Take the handle from the set, remove the nut from the end, and fit the triangle blade in place by refitting and tightening the nut. The triangular shave hook is ideal for stripping paint from flat wooden surface and edges.

Remember to clean the blade after use with wire wool, and lightly oil before storing.



5. REMOVING PAINT

Choose the required nozzle and fit onto the heat outlet. Select the scraper or shave hook required. Hold the gun with the nozzle approximately 2" (5 cm) from the surface of the paintwork and start with the lower heat setting. Move the heat gun slowly backwards and forwards until the paint blisters and bubbles. Immediately remove the paint with the scraper or shave hook. Aim to heat the paint just ahead of the scraper so that you can develop a continuous action. Do not heat the paint for too long as this will burn the paint, making it difficult to remove.

Most stickers can also be removed from paintwork by using the heat to soften the adhesive. Be careful not to direct the heat for too long if you are trying just to remove the stickers as this will blister the paint.

6. REMOVING PAINT FROM WINDOW FRAMES

Always use the glass protection nozzle. Ensure you have the nozzle facing the correct way to deflect the heat away from the glass before you switch on. Rotate the gun or nozzle 90° as you move to horizontal or vertical bead. Allow nozzle to cool before attempting to turn it. Paint can be removed from profile surfaces by using a shave hook and/or a soft wire brush.

WARNING: Glass can break easily.

7. DEFROSTING FROZEN PIPES

Choose the hook nozzle and fit over the wind pipe (1). Always heat from one or other end of the frozen portion, not from the middle.

WARNING: Do not attempt to defrost PVC pipes. Always check that it is a water pipe and not a gas pipe. Do not heat a gas pipe.

8. SHRINK SEALING ELECTRICAL CABLES

Choose the hook nozzle and fit over the wind pipe (1). Select a heat-shrinkable sleeve with a diameter matching that of the workpiece. Evenly heat the sleeve.

9. BENDING PLASTIC TUBE

Choose the hook nozzle and fit over the wind pipe (1). Turn the gun upside down and place on its clip stand so that it is resting on a secure bench with the nozzle pointing upwards.

To avoid buckling or kinking the tube, fill the tube with dry sand and seal at both ends. Heat the tube evenly by moving from side to side and bend to required shape.



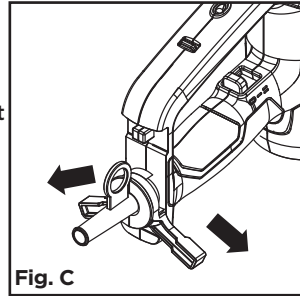
WARNING!

Protect hands from heat.

10. STAND SUPPORTER USE (See Figs. C and D)

This gun can be used in stationary mode.

1. Firstly fold down the stand supporter (6).
2. Set the gun onto a level, stable workbench. Be sure that the tool will not tip over.
3. Secure the power cord (8) to prevent entanglement or pulling the gun off the workbench.
4. Turn the gun on by selecting the desired air flow.



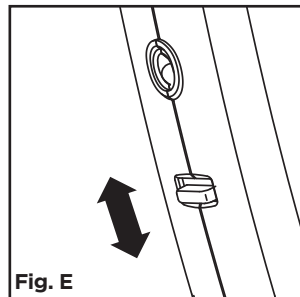
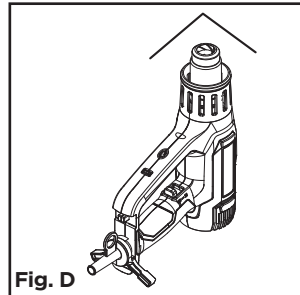
11. LED LIGHT (See Fig. E)

Switching on:

To switch on, slide the LED light switch (9) up.

Switching off:

To switch off, slide the LED light switch (9) down.



MAINTENANCE

Remove the power cord from the socket before carrying out any adjustment, servicing or maintenance.

There are no user-serviceable parts in your power tool. Never use water or chemical cleaners to clean your power tool. Wipe clean with a dry cloth. Always store your power tool in a dry place. Keep the motor ventilation slots clean. Keep all working controls free of dust. Occasionally you may see sparks through the ventilation slots. This is normal and will not damage your power tool.

If the power cord is damaged, it must be replaced by the manufacturer, its service agent or similarly-qualified persons in order to avoid a hazard.

TROUBLESHOOTING

1. If your heat gun will not operate, check the power at the power outlet.
2. If the outlet of the heat gun is very hot, please rest until cold.
3. If a fault can not be rectified return the tool to an authorized dealer for repair.

This MAXIMUM product is guaranteed for a period of 5 years from the date of original retail purchase against defects in workmanship and materials only and is subject to the following components:

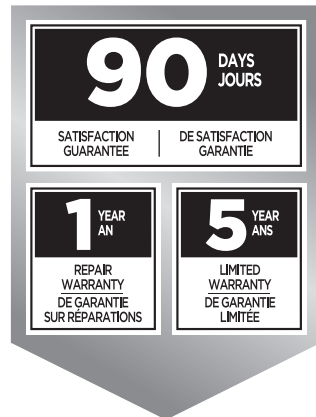
- a) Component A: The carrying case is guaranteed for a period of 1-year from the date of original retail purchase against defects in workmanship and materials.
- b) Component B: Accessories, including drill bits and saw blades, do not carry a warranty.

Subject to the conditions and limitations described below, this product, if returned to us with proof of purchase within the stated warranty period and if covered under this warranty, will be repaired or replaced (with the same model, or one of equal value or specification), at the sole discretion of the Maximum

Canada authorized repair centre ("Service Provider"). We will bear the cost of any repair or replacement and any costs of labour relating thereto.

These warranties are subject to the following conditions and limitations:

- a) a bill of sale verifying the purchase and purchase date must be provided;
- b) defects in workmanship and material to be assessed and determined by the Service Provider;
- c) this warranty will not apply to any product or part thereof which is worn or broken or which has become inoperative due to abuse, misuse, accidental damage, neglect or lack of proper installation, operation or maintenance (as outlined in the applicable owner's manual or operating instructions);
- d) this warranty does not apply to normal wear and tear or to expendable parts or accessories (including drill bits and saw blades) that may be supplied with the product that by their nature have a limited life span and are expected to become inoperative or unusable after a reasonable period of use;
- e) this warranty will not apply to routine maintenance and consumable items such as, but not limited to, fuel, lubricants, vacuum bags, blades, belts, sandpaper, bits, fluids, rubber O-rings, tune-ups or adjustments;
- f) this warranty excludes the following components that may accompany your product:
 - (1) The carrying case, which is only for a period of 1-year from the date of original retail purchase against defects in workmanship and materials.
 - (2) Accessories, including drill bits and saw blades, which do not carry a warranty of any kind.
- g) this warranty will not apply where damage is caused by repairs made or attempted by anyone other than the Service Provider (i.e. persons not authorized by the manufacturer), and any such unauthorized repairs or attempted repairs shall void this warranty in its entirety;
- h) this warranty will not apply to any parts other than original parts, except to the extent that the retailer or manufacturer or persons authorized by either of them have repaired or replaced them;



- i) this warranty will not apply to any product that was sold to the original purchaser as a reconditioned or refurbished product (unless otherwise specified in writing);
- j) this warranty will not apply to any product or part thereof if any part from another manufacturer is installed therein or any repairs or alterations have been made or attempted by unauthorized persons;
- k) this warranty will not apply to normal deterioration of the exterior finish, such as, but not limited to, scratches, dents, paint chips, or to any corrosion or discolouring by heat, abrasive and chemical cleaners;
- l) this warranty will not apply to component parts sold by and identified as the product of another company, which shall be covered under that product manufacturer's warranty, if any;
- m) any products replaced by the retailer in attempt to fulfill warranty obligations is subject to the original product warranty conditions and related time period as initiated by the original date of purchase; if product is purchased in Quebec, the warranty term will be extended for a period equal to the time during which the Quebec retailer possesses the product in attempt to fulfill warranty obligations; replaced product will not default to new product warranty conditions; and
- n) The retailer and manufacturer's sole obligation and the purchaser's sole remedy under this warranty shall be as set out herein. The warranties contained herein are not transferable and are given only to the purchaser. FURTHER, THE WARRANTIES SET OUT HEREIN ARE IN LIEU OF ALL OTHER WARRANTIES OR CONDITIONS, WHETHER EXPRESS, IMPLIED OR STATUTORY (INCLUDING SUCH AS ARISE UNDER THE SALE OF GOODS ACT OR THE INTERNATIONAL SALE OF GOODS ACT), ARISING OUT OF A COURSE OF DEALING OR USAGE OF TRADE OR OTHERWISE, INCLUDING, SUBJECT TO APPLICABLE LAW, ANY IMPLIED WARRANTIES OR CONDITIONS OF MERCHANTABILITY, MERCHANTABILITY, FITNESS OR ADEQUACY FOR A PARTICULAR PURPOSE OR USE, AND ALL OTHER SUCH WARRANTIES ARE EXPRESSLY DISCLAIMED BY THE RETAILER AND MANUFACTURER.

ADDITIONAL LIMITATIONS

This warranty applies only to the original purchaser and may not be transferred.

This warranty applies for a period of 5 years from the date of original retail purchase, as indicated on the bill of sale.

Neither the retailer, Maximum Canada, nor the manufacturer shall be liable for any other expense, loss or damage, including, without limitation, any indirect, incidental, consequential or exemplary damages arising in connection with the sale, use or inability to use this product.

Under no circumstances shall the retailer, Maximum Canada, or manufacturer be liable to the purchaser for any claim for (a) indirect, special, punitive, incidental, exemplary, or consequential damages, (b) compensation for loss of profits, anticipated revenue, savings or goodwill, or other economic loss of the purchaser, (c) exemplary, aggravated or punitive damages howsoever incurred, (d) contribution or set-off in respect of any claims against the purchaser, (e) any damages whatsoever relating to third party products or services or the purchaser's

materials, or (f) any damages whatsoever relating to interruption, delays, errors or omissions; in each case under any theory of law or equity, arising out of or in any way related to this warranty, even if advised of the possibility thereof. Notwithstanding any provision herein or entitlement of the purchaser at law, in equity or otherwise, in no event shall the liability of the retailer or manufacturer under this warranty, whether in contract, tort, product liability or otherwise, exceed, in the aggregate, the amount paid by the purchaser to the retailer for the product to which this warranty applies.

NOTICE TO CONSUMER

This warranty gives you specific legal rights, and you may have other rights, which may vary from province to province. The provisions contained in this warranty are not intended to limit, modify, take away from, disclaim or exclude any statutory warranties set forth in any applicable provincial or federal legislation.

In addition to the 5-Year Limited Warranty, this MAXIMUM product is covered by our:

1-YEAR REPAIR WARRANTY

Maximum Canada will maintain this product and replace critical parts which have worn beyond reasonable use through normal use of such product, any time during the first year after purchase.

The following are excluded from this 1-Year Repair Warranty:

- a) Missing or damaged parts or components that are a result of abuse or misuse;
- b) Any wear and tear to non-critical parts or accessories that do not affect the core function of the product.

90-DAY SATISFACTION GUARANTEE

If you are not completely satisfied with the performance of your MAXIMUM product for any reason, you can return it within 90 days from the date of purchase with proof of purchase for exchange or a full refund.