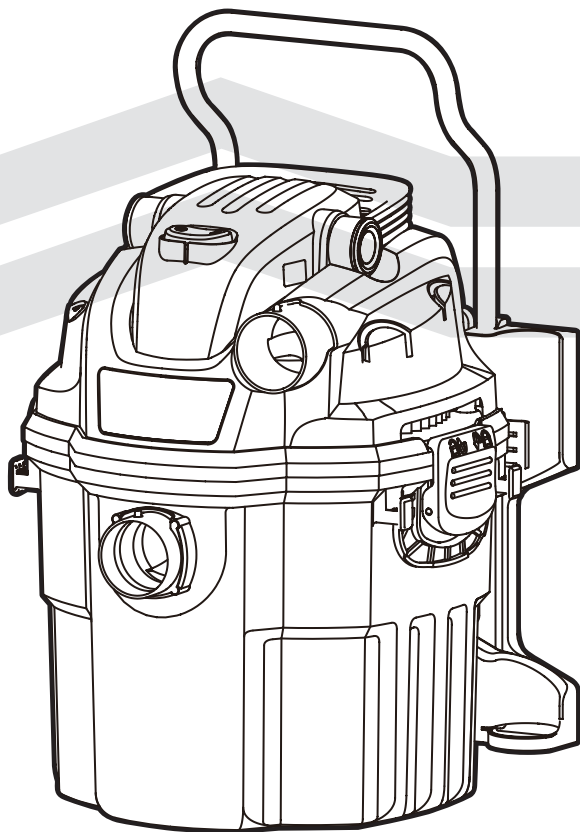


Mastervac™/MC



INSTRUCTION MANUAL
**WET/DRY VACUUM
WITH TWO-STAGE MOTOR**

054-0241-8

If any parts are missing or damaged, or if you have any questions, please call our toll-free helpline at 1-800-689-9928.



Read and understand this instruction manual thoroughly before using the product. It contains important information for your safety as well as operating and maintenance advice.

Keep this instruction manual for future use. Should this product be passed on to a third party, then this instruction manual must be included.

Quick Start Guide

QUICK START GUIDE

TECHNICAL SPECIFICATIONS	3
SAFETY INSTRUCTIONS AND WARNINGS	4—5
DOUBLE-INSULATION INSTRUCTIONS	6
EXTENSION CORDS	7
LOCATION OF PARTS	8
GENERAL ASSEMBLY INSTRUCTIONS	9—10
DRY VACUUM OPERATION	11
WET VACUUM OPERATION	12—13
BLOWING OPERATION	14
MAINTENANCE	15
INSTALLING & CLEANING CARTRIDGE FILTER	16
INSTALLING & CLEANING FOAM SLEEVE FILTER	17
RESETTING THE REMOTE CONTROL	18
TROUBLESHOOTING	19
ACCESSORIES	20
EXPLODED VIEW AND PARTS LIST	21—22
WARRANTY	23

SPECIFICATIONS

Peak horsepower:	5
Power:	120 V, 60 Hz, 8 A
Air flow:	75.6 CFM at end of hose
Tank size:	19 L (5 U.S. gallons / 4 3/16 Imperial gallons)
Tank:	Polypropylene
Hoses:	1 7/8" (4.8 cm) diam., 10' (3 m) and 8' (2.4 m)
Filters:	Washable Polyethylene Terephthalate (P.E.T.) cartridge, Foam filter
Power cord:	12' (3.7 m)
Weight:	21.9 lb (9.95 kg)

IMPORTANT SAFETY INSTRUCTIONS

SAVE THIS MANUAL FOR FUTURE REFERENCE.

Read all instructions before using this appliance.

Read and understand this instruction manual and all labels on the Wet/Dry Vacuum before using.

Safety is a combination of common sense, staying alert, and knowing how this Wet/Dry Vacuum works.

Use this Wet/Dry Vacuum only as described in this manual. To reduce the risk of personal injury or damage to the Wet/Dry Vacuum, use only recommended accessories.

Understanding Safety Terminology



DANGER: If safety information is not followed, someone will be seriously injured or killed.



WARNING:

If safety information is not followed, someone could be seriously injured or killed.



CAUTION: If safety information is not followed someone may be injured.

When using your Wet/Dry Vacuum, follow basic safety precautions including the following:



WARNING : To reduce the risk of fire, electric shock, or injury

- Do not run the Wet/Dry Vacuum unattended.
- Do not vacuum, or use this Wet/Dry Vacuum near liquids, gases, or explosive vapours like gasoline or similar fuels, lighter fluid, cleaners, oil based paints, natural gas or hydrogen. Do not vacuum or use this Wet/Dry Vacuum near explosive dusts like coal dust, magnesium dust, grain dust, or gun powder, as sparks inside the motor can ignite flammable vapours or dust.
- Do not vacuum burning or smoking items such as cigarettes, matches, or hot ashes.
- Keep the cord away from heated surfaces.
- Do not expose to rain. Store indoors.
- Do not unplug by pulling on cord. To unplug, grasp the plug, not the cord.
- Do not use if cord, plug or other parts are damaged.
- If your Wet/Dry Vacuum is not working correctly or has missing parts, has been dropped or damaged, left outdoors or dropped in water, return it to an authorized service centre.
- Do not pull or carry by the cord. Do not use the cord as a handle, close a door on the cord, or pull the cord around sharp edges or corners.
- Do not run the Wet/Dry Vacuum over the cord.
- Do not handle the plug or the Wet/Dry Vacuum with wet hands.
- To reduce the risk of health hazards from vapours or dusts, do not vacuum toxic materials.
- Do not use or store near hazardous materials.
- Do not use this Wet/Dry Vacuum with a torn filter or without installing the filter, except when vacuuming liquids as described in the operation section of this manual.

5 SAFETY WARNINGS

- Do not use the Wet/Dry Vacuum as a toy. Pay particularly close attention when it is being used by or near children.
- To reduce the risk of injury from the Wet/Dry Vacuum accidentally starting, unplug the power cord before changing or cleaning the filter.
- Do not leave the Wet/Dry Vacuum unattended when it is plugged in. Unplug it from the power outlet when not in use and before servicing. Turn off the Wet/Dry Vacuum before unplugging.
- Do not put any objects into the ventilation openings. Do not vacuum with any ventilation openings blocked.
- Keep free of dust, lint, hair, or any other items that may reduce the air flow.
- Keep hair, loose clothing, fingers, and all body parts away from openings and moving parts.
- To reduce the risk of falling, use extra care when cleaning on stairs.

When using as a blower:

- Direct air discharge only at the work area.
- Do not direct air at bystanders.
- Do not use near children.
- Do not use blower for any purpose other than blowing dirt and debris.
- Do not use Wet/Dry Vacuum as a sprayer.

This Wet/Dry Vacuum is double-insulated, eliminating the need for a separate grounding system. Use only identical replacement parts. Read the servicing instructions before servicing the Wet/Dry Vacuum. Use this Wet/Dry Vacuum only as described in this manual.

Observe the following warnings that appear on the motor housing of the Wet/Dry Vacuum.



DOUBLE-INSULATED, GROUNDING NOT REQUIRED. WHEN SERVICING USE ONLY IDENTICAL REPLACEMENT PARTS.



WARNING: To reduce the risk of electric shock, do not expose to rain. Store indoors.




WARNING: For your own safety, read and understand this instruction manual. Do not operate unattended. Do not use this Wet/Dry Vacuum to pick up hot ashes, coals, toxic, flammable or other hazardous materials. Do not use near explosive liquids or vapours.



CAUTION: Do not vacuum drywall dust or cold fireplace soot or ash with a standard Wet/Dry filter. This dust is very fine and will not be captured by the filter and may cause damage. Refer to the operation section for proper filter selection.

**WARNING:** SERVICING OF DOUBLE-INSULATED WET/DRY VACUUM

In a double-insulated Wet/Dry Vacuum, two systems of insulation are provided instead of grounding. No method of grounding is provided on a double-insulated appliance, nor should one be added. Servicing a double-insulated Wet/Dry Vacuum requires extreme care and knowledge of the system, and should be done only by qualified service personnel. Replacement parts for a double-insulated Wet/Dry Vacuum must be identical to the parts that are being replaced. This Wet/Dry Vacuum is marked with the words 'DOUBLE INSULATED'. The symbol  (square within a square) may also be marked on the appliance.

- For household use only.
- To reduce the risk of electric shock, unplug before cleaning or servicing.
- DO NOT use without filters in place.
- To reduce the risk of electric shock, use indoors only.



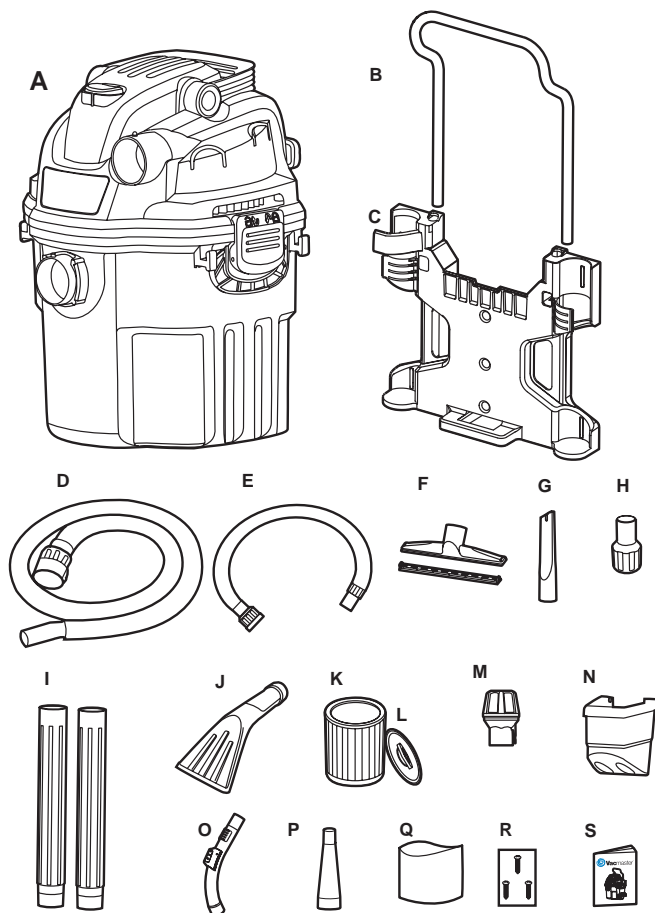
CAUTION: To reduce the risk of injury from moving parts, unplug before servicing.

7

EXTENSION CORDS

When using an extension cord with your Wet/Dry Vac, refer to the following table to determine the required A.W.G. wire size. Before using the cleaner make sure the power cord and extension cord are in good working condition. Make repairs or replacements before using the vacuum cleaner. Only use extension cords that are rated for outdoor use.

Length of Extension Cord				
110 V-120 V	25' (7.5 m)	50' (15.25 m)	100' (30.5 m)	150' (45.7 m)
Amps	AWG Wire Size			
0-6	18	16	16	14
7-10	18	16	14	12
11-12	16	16	14	12
13-16	14	12	Not recommended	



Description

A Vac Assembly

B Hose Holder

C Mounting Rack

D 10' Hose

E 8' Flex Hose

F Floor Brush / Squeegee

G Crevice Tool

H Adapter

I Extension Wands

J Car Nozzle

K Cartridge Filter

L Filter Retainer

M Air/Noise Diffuser

N Side Tool Caddy

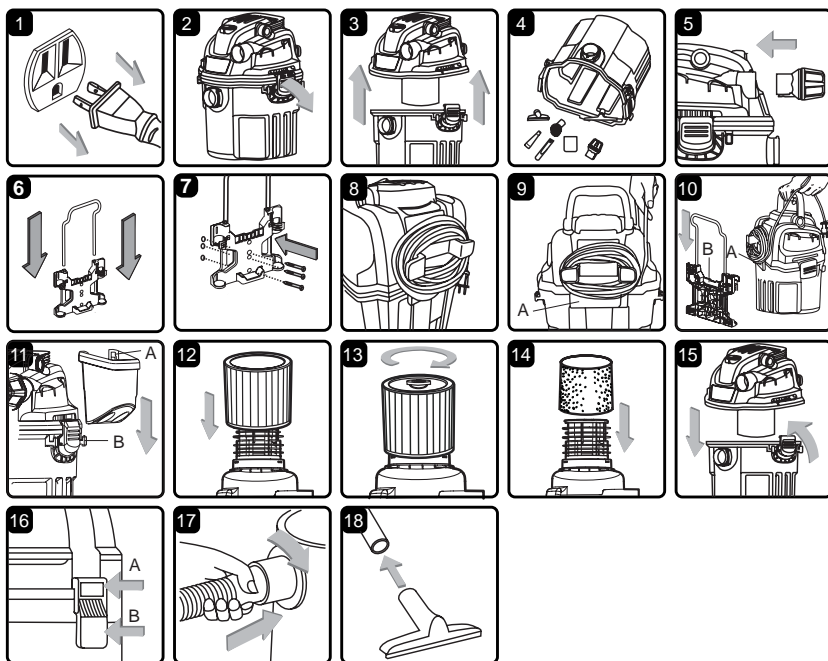
O Remote Control Handle

P Blower Nozzle

Q Foam Filter

R Screws

S Operator's Manual



WARNING! DO NOT PLUG POWER CORD INTO POWER OUTLET. MAKE SURE PLUG IS DISCONNECTED BEFORE ASSEMBLING THE WET/DRY VAC.

UNPACKING YOUR WET/DRY VACUUM & GENERAL ASSEMBLY

1. Verify that the power cord is disconnected from the outlet. (Fig. 1)
2. Undo the latches. (Fig. 2)
3. Lift the power head off of the container. (Fig. 3)
4. Remove the contents from inside the container. Make sure you have all contents as listed on page 7. (Fig. 4)
5. Replace the power head to the container and insert the noise diffuser into the blowing port. (Fig. 5)

MOUNTING RACK AND STORAGE ASSEMBLY

IMPORTANT!

- Do not mount the rack over 5 feet from the floor.
- Do not screw the rack to drywall only. Secure the screws to a stud.
- Do not hang from or sit on the mounting rack.
- Do not exceed 40 pound maximum weight limit.


6. Insert the hose holding rod into the two holes located on the top of the mounting rack. Make sure the bend of the rod is directed away from the wall. (Fig. 6)

7. Select a location on a wall stud that is not more than 20' from an electrical outlet.
8. Align the three screw holes so that they are over a stud. Make sure the rack is level and mark the whole locations. Make a 1/8" diameter pilot hole in each marked location. Secure the mounting rack to the wall stud with the three screws provided. (Fig. 7)

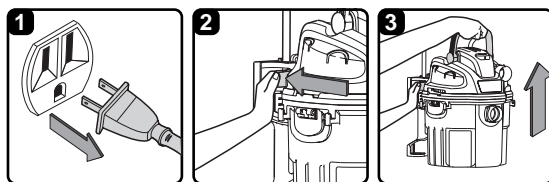
MOUNTING THE VACUUM ON TO THE RACK

1. Measure the distance from the top screw hole of the mounting rack to the closest electrical outlet and add 12". This is the amount of cord needed; wind the excess power cord around the cord wrap area located on the rear of the vacuum. Make sure the cord is not wound to the hanging hook (A). (Figs. 8 & 9)
2. Mount the vacuum onto the mounting rack by aligning the vac hanging hook (A) with slot (B) on the mounting rack and slide downwards until it locks. Make sure the cord is not caught between the hanging hook (A) and the hanging slot (B). (Fig. 10)
3. Attach the tool caddy on either side of the vac onto the hooks provided. (Fig.11)
4. Your vacuum comes ready for dry vacuum cleaning. If the cartridge filter is not installed refer to page 13 for filter installation. (Figs. 12 & 13)
5. For wet vacuum cleaning, install the supplied foam filter. (Fig. 14) See page 13 for filter installation.
6. Place the power head back on the container, and secure into place using the 2 side latches. (Figs. 15 & 16)
7. Insert the locking end of the hose into the port of the container and lock in place. (Fig. 17)
8. Choose the desired accessories and push onto the suction tube. (Fig. 18)

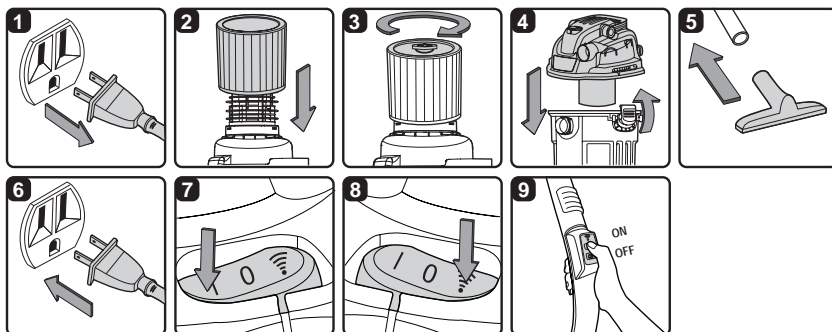
POLARIZED PLUG

To reduce the risk of electrical shock, this appliance has a polarized plug (with one blade wider than the other). This plug will fit in a polarized outlet only one way. If the plug does not fit fully in the outlet, reverse the plug. If it still does not fit, contact a qualified electrician to install the proper outlet. Do not change the plug in any way. Double insulation  eliminates the need for the three wire grounded power cord and grounded power supply system.

DISMOUNTING THE VACUUM FROM THE RACK



1. Disconnect the power cord from the electrical outlet. (Fig. 1)
2. Press the release lever with your left hand. (Fig. 2)
3. Lift the vacuum up and out of the rack by the handle with your right hand. (Fig. 3)



WARNING! BE SURE TO READ, UNDERSTAND, AND APPLY INFORMATION ENTITLED 'SAFETY INSTRUCTIONS & WARNINGS'. DO NOT VACUUM IN AREAS WITH FLAMMABLE GASES, VAPOURS, OR EXPLOSIVE DUSTS IN THE AIR. FLAMMABLE GASES OR VAPOURS INCLUDE BUT ARE NOT LIMITED TO: LIGHTER FLUID, SOLVENT TYPE CLEANERS, OIL-BASED PAINTS, GASOLINE, ALCOHOL, AND AEROSOL SPRAYS. EXPLOSIVE DUSTS INCLUDE BUT ARE NOT LIMITED TO: COAL, MAGNESIUM, GRAIN, AND GUN POWDER. TO REDUCE THE RISK OF HEALTH HAZARDS FROM VAPOURS OR DUST, DO NOT VACUUM TOXIC MATERIALS.

1. Verify that the power cord is disconnected from the outlet. (Fig. 1)
2. In order to prepare your vacuum for dry vacuuming, verify that the cartridge filter is securely mounted. Make sure the filter is pushed in until it stops against the power head. (Fig. 2) (Your Wet/Dry Vac comes with the cartridge filter pre-installed. If not, see page 13 for installation instructions.)
3. Place filter retainer on top of cartridge filter and tighten down by turning the retainer handle clockwise. (Fig. 3)
4. Place the power head back on the container, aligning the top section with the latches, and snap into place. (Fig. 4)

OPERATING INSTRUCTIONS: DRY VACUUMING

5. Insert the locking end of the hose onto the vacuum port on the tank and lock in place. Push the required attachment onto the free end of the hose or extension. (Fig. 5)
6. Plug the power cord into the outlet and hang the vacuum onto the rack or use off the rack. (Fig. 6)
7. Turn the motor on by flipping the switch to the 'I' ON position. (Fig. 7) For remote control use, set the power switch to remote control position "📶" and turn the vacuum on by pressing the 'I' ON button on the remote control handle for at least one second. (Figs. 8 & 9)
8. Once you have completed vacuuming, flip the switch to the 'O' OFF position or press the 'O' OFF button on the remote control for at least one second.

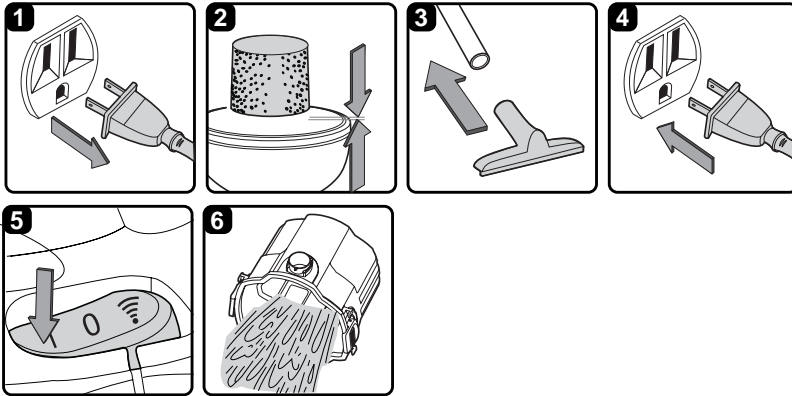
O = OFF

I = ON



= Remote control

DO NOT USE THE CARTRIDGE FILTER FOR LIQUID VACUUMING.



WET VACUUMING



WARNING: BE SURE TO READ, UNDERSTAND, AND APPLY INFORMATION ENTITLED 'SAFETY INSTRUCTIONS & WARNINGS'. DO NOT VACUUM IN AREAS WITH FLAMMABLE GASES, VAPOURS, OR EXPLOSIVE DUSTS IN THE AIR. FLAMMABLE GASES OR VAPOURS INCLUDE BUT ARE NOT LIMITED TO: LIGHTER FLUID, SOLVENT TYPE CLEANERS, OIL-BASED PAINTS, GASOLINE, ALCOHOL, AND AEROSOL SPRAYS. EXPLOSIVE DUSTS INCLUDE BUT ARE NOT LIMITED TO: COAL, MAGNESIUM, GRAIN, AND GUN POWDER. TO REDUCE THE RISK OF HEALTH HAZARDS FROM VAPOURS OR DUST, DO NOT VACUUM TOXIC MATERIALS.



WARNING: DO NOT PLUG POWER CORD INTO POWER OUTLET. MAKE SURE PLUG IS DISCONNECTED BEFORE ASSEMBLING THE WET/DRY VAC.

IMPORTANT! When vacuuming large quantities of liquids, we recommend that you remove the vacuum from the mounting rack and put it on the floor. The vacuum can be heavy when full of liquids and may be difficult to remove from the rack.

1. Verify that the power cord is disconnected from the outlet. Verify that the container is clean and free of dust and dirt. (Fig. 1)
2. Remove cartridge filter, then carefully install the foam sleeve filter over the filter cage and place the power head back on the container. (Fig. 2) See filter installing instructions on page 13.

DO NOT USE THE CARTRIDGE FILTER FOR LIQUID VACUUMING.

OPERATING INSTRUCTIONS – WET VACUUMING

3. Fit the desired nozzle to the vacuum hose. (Fig. 3)
4. Verify that the switch is in the 'O' OFF position before plugging the power cord into the outlet. (Fig. 4)
5. For vacuuming large amounts of liquid, it is recommended that you place the vacuum on the floor. Turn the motor on by flipping the switch on the power head to the 'I' ON position or flip the switch to the Remote Control Position and use the 'I' ON button on the remote control. (Figs. 5 & 6)

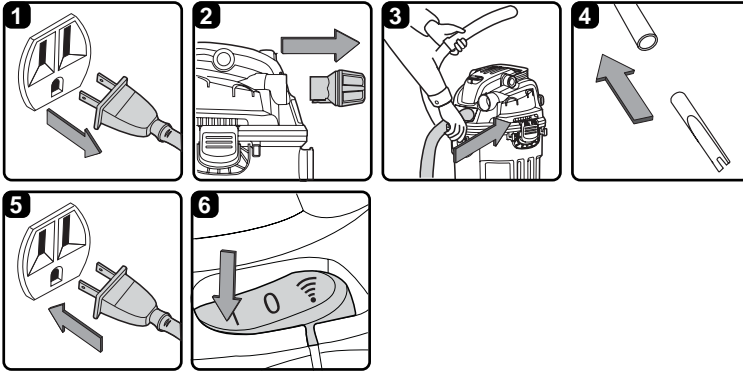


CAUTION: DO NOT SUBMERGE THE REMOTE CONTROL IN LIQUID.

6. After wet vacuuming, turn the machine off and remove plug from power supply. To prevent the risk of possible mildew, empty the container, clean and dry the inside and outside of the container, and remove the foam filter and allow to air dry before storage.

IMPORTANT! When vacuuming large quantities of liquids, do not immerse the nozzle completely in the liquid; leave a gap at the tip of the nozzle opening to allow air inflow. The machine is fitted with a float valve that stops the suction action when the container reaches its maximum capacity. You will notice an increase in motor speed. When this happens, turn off the machine, disconnect from power supply, and empty the liquid into a suitable receptacle or drain. To continue vacuuming, refit the power head to the container. After wet vacuuming, turn the machine off and remove plug from power supply. To prevent the risk of possible mildew, empty the container, clean and dry the inside and outside of the container, and remove the foam filter and allow to air dry before storage.

REMEMBER! The foam filter must be removed after wet vacuuming, and a cartridge filter must be installed before dry vacuuming again.



This Wet/Dry Vac has blowing capabilities. To use the blower feature, follow the instructions listed.



WARNING!

ALWAYS WEAR SAFETY GOGGLES COMPLYING WITH ANSI Z87.1 (OR IN CANADA, CSAZ94.3) BEFORE USING BLOWER.



WARNING!

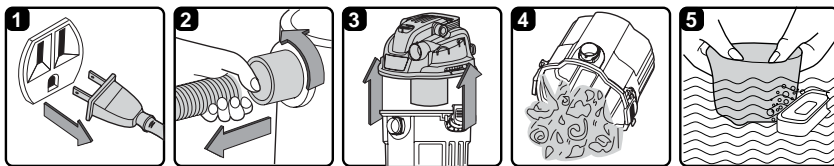
KEEP BYSTANDERS CLEAR OF BLOWING DEBRIS.



WARNING!

WEAR A DUST MASK IF BLOWING CREATES DUST THAT MIGHT BE INHALED.

1. Check that the power cord is disconnected from the outlet. (Fig. 1)
2. Make sure the container is empty before using as a blower.
3. Remove the noise diffuser from the blower port. (Fig. 2)
4. Remove hose from the vacuum port and insert the locking end of the hose into the blowing port on the power head and lock into position. (Fig. 3)
5. Fit the desired extension wand and/or nozzle to the free end of the vacuum hose. (Fig. 4)
6. Ensure the power switch is turned off and plug in the power supply. (Fig. 5)
7. Before turning on the vac, firmly hold loose end of the hose. Turn the motor on by flipping the switch to the 'I' ON position or set switch to remote control setting and use the remote control. (Fig. 6)



1. Check that the power cord is disconnected from the outlet. (Fig. 1)
2. Disconnect the hose from the vacuum. (Fig. 2)
3. Remove the vacuum from the mounting rack.
4. Undo the latches and remove the power head from the container. (Fig. 3)
5. Clear all dirt and debris from the container and hose. (Fig. 4)
6. Clean the foam filter by washing it with water and mild soap. (Fig. 5)
7. Check the hose, attachments, and power cord to ensure that they have not been damaged.

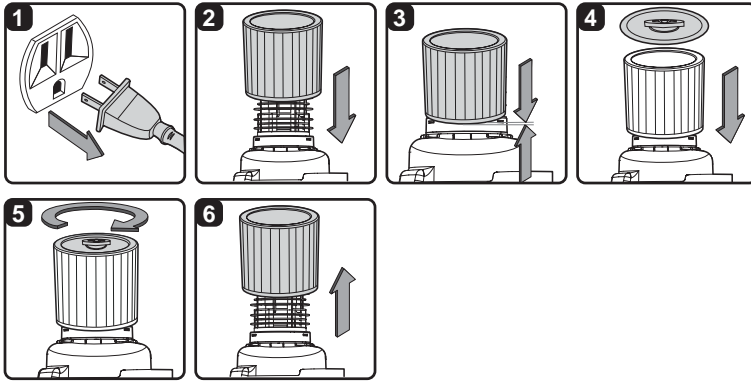
IMPORTANT! Clean or change the cartridge filter regularly for best performance. **ALWAYS USE CARTRIDGE FILTER FOR DRY VACUUMING.** If the machine is used without the cartridge filter, the motor will burn out and the warranty will be voided. Always keep spare filters on hand.

NOTICE! The filters included are made of high quality materials designed to stop small dust particles. The cartridge filter should be used for dry pick-up and small amounts of liquids. A dry cartridge filter is necessary to pick up dust. If the cartridge filter is wet, it will clog quickly and be difficult to clean. Handle the filter carefully when removing it for cleaning and replacing. Check the filters for tears or small holes, a small hole can let dust pass through and out of the cleaner. Do not use a filter with holes or tears in it, replace it immediately.



WARNING!

ALWAYS DISCONNECT THE PLUG FROM THE POWER OUTLET BEFORE REMOVING THE POWER HEAD FROM THE CONTAINER.

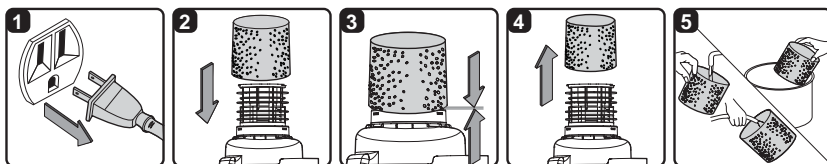


Installing Cartridge Filter

1. Check that the power cord is disconnected from the outlet. (Fig. 1)
2. Remove power head and place in upside down position.
3. Install the cartridge filter over the filter cage with the flat end of the filter towards the vacuum power head. Carefully push filter on until it stops against the power head. (Figs. 2 & 3)
4. Place filter retainer on top of cartridge filter over the raised lip and tighten down by turning retainer clockwise. Do not over tighten. (Figs. 4 & 5)

Removing and Cleaning Cartridge Filter

1. Unlock and remove the filter retainer by turning retainer handle counter-clockwise.
2. Carefully hold and pull the cartridge filter up for removal. (Fig. 6)
3. Clean the cartridge filter by gently tapping or brushing dirt off. Cleaning should not be done indoors in living areas. For optimal performance a new filter is recommended.
4. Install cleaned or new filter as instructed above in steps 2 and 3 of Installing Cartridge Filter.
5. Wet filters should be removed and allowed to air dry for 24 hours before installing onto the filter cage.



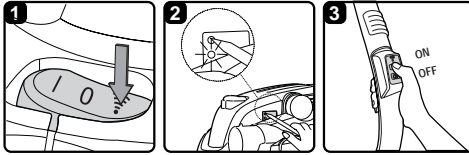
Installing Foam Sleeve Filter


1. Check that the power cord is disconnected from the outlet. (Fig. 1)
2. Remove power head and place in upside down position.
3. Carefully slide foam sleeve filter down over the filter cage making sure the whole cage is covered. (Figs. 2 & 3)
4. Replace the power head on to the container.

Cleaning Foam Sleeve Filter

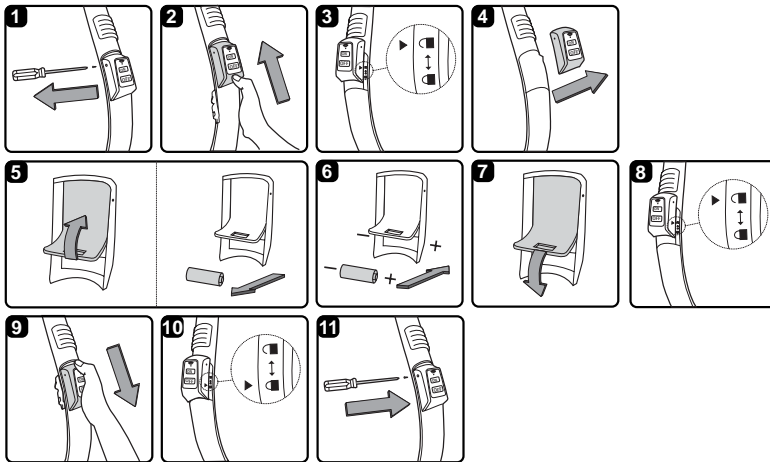
1. With the removed power head in the upside down position, carefully remove foam sleeve filter. (Fig. 4)
2. Use a mild soap and water solution to wash foam sleeve filter and rinse with clean water. (Fig. 5)
3. Allow filter to air dry before installing and using again.




Resetting The Remote Control



1. Have the remote control accessible. Set the power switch on the vacuum to remote control position “”. (Fig. 1)
2. Press the RESET button on the side of the power head with a pointed object, such as a paper clip or a pen tip, until the indicator lights up. (Fig. 2)
3. Release the RESET button once the red indicator light lights up and immediately press and hold the “ON” button on the remote control until the vacuum powers on. (Fig. 3)
4. If the “ON” button is not pressed and held within a 15 second window, the reset will not be successful. Repeat steps 2-3 to reset the remote control.

Changing The Battery – Replace Only With A 23AE 12 V Alkaline Battery



1. Use a Phillips screwdriver to remove the screws on the remote control. (Fig. 1)
2. Slide back the remote cover so that the white triangle on the remote cover points to the unlock symbol “”. (Figs. 2 & 3)
3. Remove the remote cover from the handle. (Fig. 4)
4. Lift the foam cover to expose the battery and remove the old battery. (Fig. 5)
5. Insert the new battery with the terminals in the direction shown and make sure to replace the foam cover. (Fig. 6 & 7)
6. Replace the remote control by aligning the white triangle on the side cover to the unlock symbol “” on the handle. (Fig. 8)
7. Slide the remote cover so that the white triangle is over the locked symbol “”. (Figs. 9 & 10)
8. Secure the cover with the screws. Do not over tighten. (Fig. 11)

**WARNING!**

TO REDUCE THE RISK OF ELECTRIC SHOCK, UNPLUG BEFORE TROUBLESHOOTING

Symptom	Possible Causes	Corrective Action
Vacuum will not operate.	1) No power supply.	1) Check power supply – cord, breakers, fuses.
	2) Faulty power cord.	2) Unplug and check the power cord. If damaged, have it repaired by a professional.
	3) Container is full.	3) Empty container.
	4) Switch in the wrong position.	4) Press the ON 'I' button on the power head.
Dust comes out from motor cover.	1) Cartridge filter is missing or damaged.	1) Attach or replace cartridge filter.
Reduced efficiency and motor/speed vibration.	1) There is a blockage in the nozzle, hose, or the container inlet.	1) Check nozzle, hose and container inlets for blockage.
	2) The cartridge filter is clogged by fine dust.	2) Take off the filter and clean it. Or install new cartridge filter.
Remote will not operate.	1) Battery is dead.	1) Replace the battery.

Additional accessories for your MasterVac™ Wet/Dry Vacuum are available.

Consumables

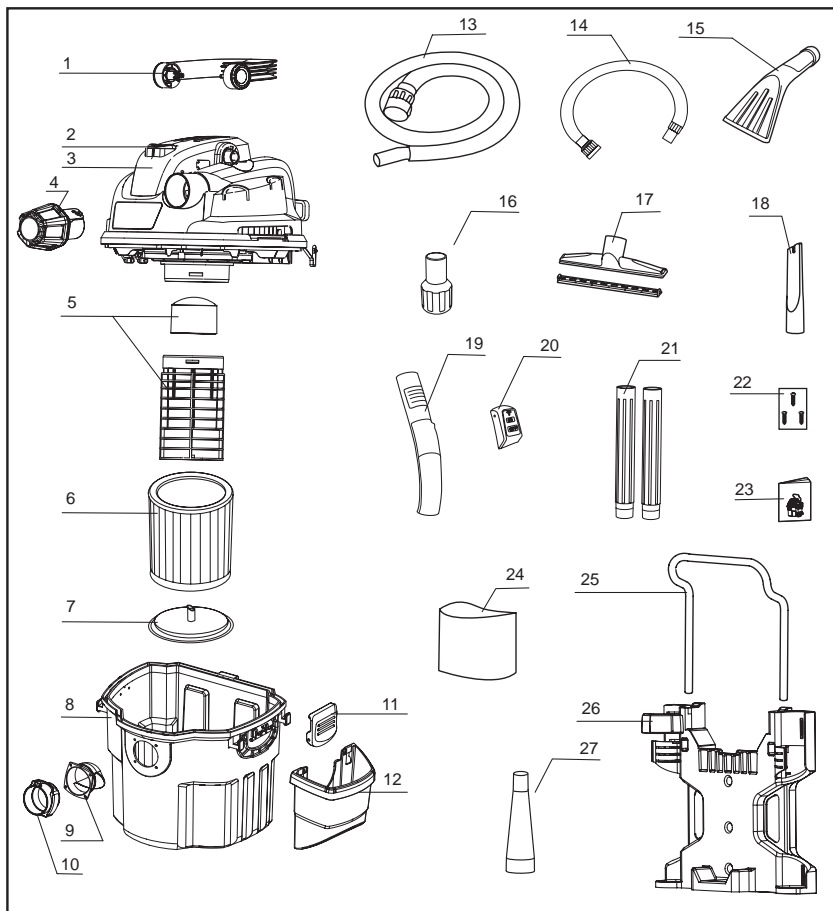
054-0035	Foam Sleeve / Wet Filter
054-0148	Dry Reusable filter
054-0150	Household Collector Bag
054-0212	Fine Dust High Efficiency Collector Bag
054-0211	Regular wet/dry Cartridge Filter

1 1/4" Accessories

054-0047	Hose
054-0120	Multi-surface nozzle
054-0009	Micro kit
054-0084	Round brush
054-0085	Crevice tool
054-0086	Utility nozzle
054-0087	Floor nozzle
054-0128	Extension wand
054-0079	Claw utility nozzle
054-0080	1 1/4" to 2 1/2" adaptor
054-0227	Crevice Tool and Soft Bristle Kit
054-0226	Drain Hero

21

EXPLODED VIEW



Item Number	Descriptions	Qty
1	Handle	1
2	Power Switch	1
3	Power Head	1
4	Air/Noise Diffuser	1
5	Float & Filter Cage	1
6	Cartridge Filter	1
7	Filter Retainer	1
8	Container	1
9	Vacuum Port Deflector	1
10	Vacuum Port Assembly	1
11	Latch Assembly	2
12	Side Tool Caddy	1
13	Hose	1
14	Flex Hose	1
15	Car Nozzle	1
16	Adapter	1
17	Floor Brush / Squeegee	1
18	Crevice Tool	1
19	Remote Control Handle	1
20	Remote Control	1
21	Extension Wands	2
22	Screws	3
23	Operator's Manual	1
24	Foam Filter	1
25	Hose Holder	1
26	Mounting Rack	1
27	Blower Nozzle	1

MASTERVAC™ LIMITED WARRANTY

This MASTERVAC™ product is guaranteed **for a period of three (3) years from the date of original retail purchase** against defects in materials and workmanship

Subject to the conditions and limitations described below, this product, if returned to us with proof of purchase within the stated warranty period and if covered under this warranty, will be repaired or replaced (with the same model, or one of equal value or specification), at our option. We will bear the cost of any repair or replacement and any costs of labour relating thereto.

This warranty is subject to the following conditions and limitations:

- a) a bill of sale verifying the purchase and purchase date must be provided;
- b) this warranty will not apply to any product or part thereof which is worn or broken or which has become inoperative due to abuse, misuse, accidental damage, neglect, or lack of proper installation, operation, or maintenance (as outlined in the applicable owner's manual or operating instructions), or which is being used for industrial, professional, commercial or rental purposes;
- c) this warranty will not apply to normal wear and tear or to expendable parts or accessories that may be supplied with the product which are expected to become inoperative or unusable after a reasonable period of use;
- d) this warranty will not apply to routine maintenance and consumable items such as, but not limited to, fuel, lubricants, vacuum bags, blades, belts, sandpaper, bits, fluids, tune-ups, or adjustments;
- e) this warranty will not apply where damage is caused by repairs made or attempted by others (i.e. persons not authorized by the manufacturer);
- f) this warranty will not apply to any product that was sold to the original purchaser as a reconditioned or refurbished product (unless otherwise specified in writing);
- g) this warranty will not apply to any product or part thereof if any part from another manufacturer is installed therein or any repairs or alterations have been made or attempted by unauthorized persons;
- h) this warranty will not apply to normal deterioration of the exterior finish, such as, but not limited to, scratches, dents, paint chips, or to any corrosion or discolouring by heat, abrasive and chemical cleaners; and
- i) this warranty will not apply to component parts sold by and identified as the product of another company, which shall be covered under the product manufacturer's warranty, if any.

Additional Limitations

This warranty applies only to the original purchaser and may not be transferred. Neither the retailer nor the manufacturer shall be liable for any other expense, loss, or damage, including, without limitation, any indirect, incidental, consequential, or exemplary damages arising in connection with the sale, use, or inability to use this product.

Notice to Consumer

This warranty gives you specific legal rights, and you may have other rights, which may vary from province to province. The provisions contained in this warranty are not intended to limit, modify, take away from, disclaim, or exclude any statutory warranties set forth in any applicable provincial or federal legislation.

Imported by Trifleaf Distribution Trifeuil Toronto, Canada M4S 2B8