

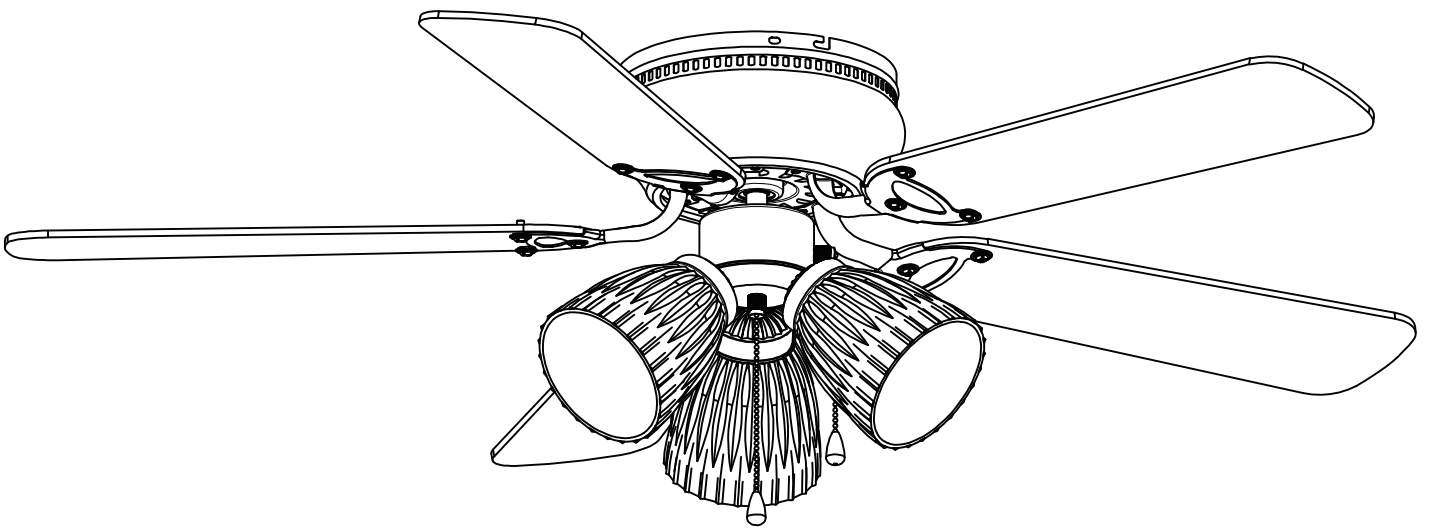
# 42" Hugger Ceiling FAN



## OWNER'S MANUAL

052-4328-4

052-4329-2



### Caution!

For your safety, please read and understand this manual before installing or operating this product.

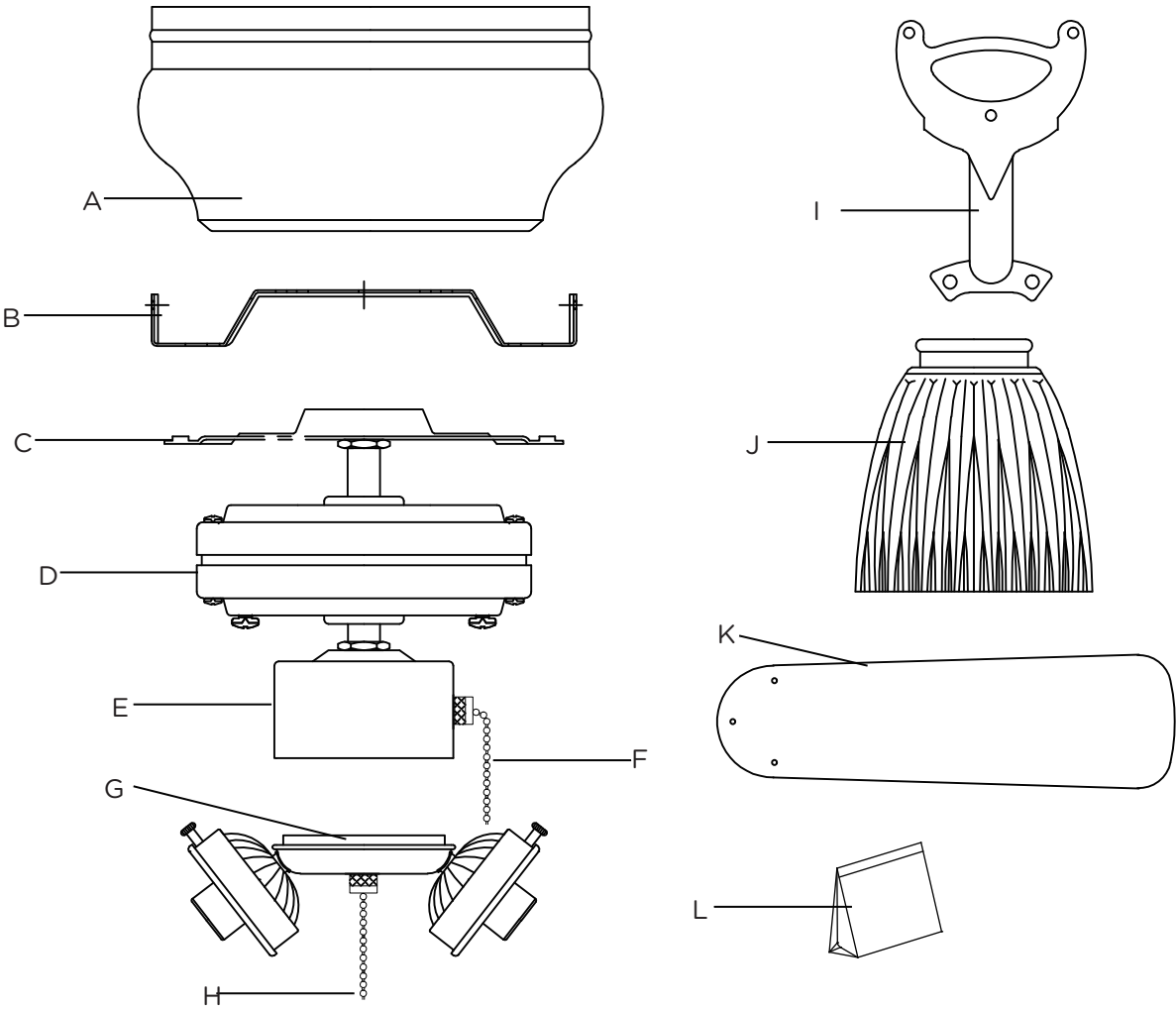
**Toll-free: 1-866-788-7389**



Exploded view .....	1
Important safety instructions .....	2
Rules for safe installation .....	2
Tools required for assembly .....	3
Assembly .....	3
Operation .....	7
Maintenance .....	8
Care and cleaning .....	8
Troubleshooting .....	8
Environmental protection .....	9
Warranty .....	10

EXPLODED VIEW

No.	Description	Qty.	No.	Description	Qty.
A	Hugger Housing	1	L	Parts Pack	1
B	Mounting Bracket	1			
C	Motor Support Bar	1			
D	Motor	1			
E	Switch Housing	1			
F	Fan Pull Chain	1			
G	Light Kit	1			
H	Light Pull Chain	1			
I	Blade Arm	5			
J	Glass Shade	3			
K	Blade	5			



## IMPORTANT SAFETY INSTRUCTIONS

---

Please retain this manual for future reference.



**Note:** Always turn the power off before servicing the ceiling fan.

- A dry dust cloth is suitable for most cleanings.
- Should the ceiling fan become wet, have a qualified electrician inspect it before next use.
- In order to comply with safety regulations and to avoid safety hazards, ceiling fan repairs must be carried out by qualified personnel.
- Pay attention to the ceiling fan blades when cleaning, painting or working nearby.
- Children do not recognize the dangers that may occur when operating ceiling fan. Keep children away from ceiling fans.

- DO NOT:**
- Expose the ceiling fan to water or immerse it in water.
  - Operate the ceiling fan if it shows any signs of damage or if it has been dropped.
  - Attempt to remove any parts of the housing or insert any object while the ceiling fan is operating.
  - Position the ceiling fan on or near hot surfaces such as stove tops, or near open flames.
  - Expose the ceiling fan to rain or moisture. Do not operate the ceiling fan outdoors or with wet hands.
  - Use the reverse switch while the fan blades are in motion. This could result in damage to the ceiling fan.

## RULES FOR SAFE INSTALLATION

---

This ceiling fan is designed for household use only and not for commercial applications. No responsibility is accepted for damage resulting from improper use or noncompliance with the instructions.



### CAUTION!

- To avoid possible electric shock, be sure electricity at the fuse box or the circuit breaker is turned off before wiring.
- All wiring must be done in accordance with national and local wiring codes. Consult a qualified electrician to ensure correct branch circuit conductor.
- Follow the recommended instructions for the proper method of wiring for the new ceiling fan. The ceiling fan must be grounded as a precaution against possible electric shock.
- If you do not have sufficient electrical wiring knowledge, have the fan installed by a licensed electrician.
- The outlet box and joist must be securely mounted and capable of reliably supporting at least 35 lb (15.9 kg).
- Mount the lowest moving parts at least 8' 3" (2.5 m) above floor or ground level.
- Make sure all electrical connections are sealed with proper connector and electrical tape inside the outlet box.
- Make sure the ceiling fan is securely fastened to the ceiling.
- All set screws must be checked and re-tightened where necessary before fan operation.









### WARNING!

- Mount only to an outlet box marked acceptable for fan support.
- To prevent injury, make sure the fan blades are not bent and that there are no objects within the rotation area.
- The important precautions, safeguards and instructions appearing in this manual are not meant to cover all possible situations. It must be understood that common sense and caution are factors which cannot be built into the product.
- Not suitable for use with solid-state speed controls.

## TOOLS REQUIRED FOR ASSEMBLY

This manual is designed to make it as easy as possible for you to assemble, install, operate and maintain the ceiling fan. The following tools listed are required for assembly and installation:

	1x star-head screwdriver		1x stepladder
	1x flat screwdriver		1x wire stripper/pliers
	1x wrench		1x electrical tape

After opening the package you should find all the necessary parts for installing this ceiling fan. The box should also contain:

- 5 fan blades
- 5 decorative fan blade brackets
- 1 motor with decorative housing
- 1 light kit with complete installation hardware
- 3 glass shades
- 1 mounting bracket with complete installation

Parts Pack Containing:

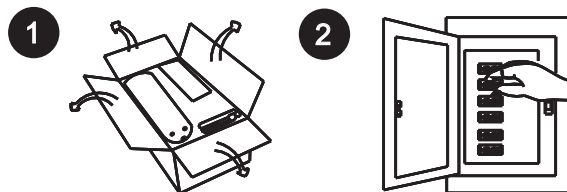
- 2 wood screws with flat washers
- 2 mounting screws with lock washers
- 1 extra light kit screw
- 1 extra blade bracket screw
- 3 wire connectors
- 16 blade screws, flat washers and hexagon nuts
- 2 pull chains with fobs
- 1 “J” hook
- 1 zip tie

## ASSEMBLY

### Preparing for installation

#### Getting ready

- Unpack and inspect carefully to make sure all parts are included and not damaged (see Fig. 1). Lay all pieces out on a working space.
- Turn off power at fuse box or circuit breaker to avoid possible electrical shock (see Fig. 2).



#### Choosing a location for the ceiling fan

- For effective air circulation, fan should be located in the centre of the room, or a minimum of 32” (81.3 cm) from adjacent walls or obstructions.
- Choose a location where there is a high enough ceiling clearance (at least 8’ 3” (2.5 m) from the floor to the ceiling fan’s lowest moving part).
- Ensure that the outlet box in the room’s ceiling can support the weight of the fan. Typically, if the outlet box is marked acceptable for fan support, it can hold the fan securely.

### Installation

#### 1. Mounting bracket

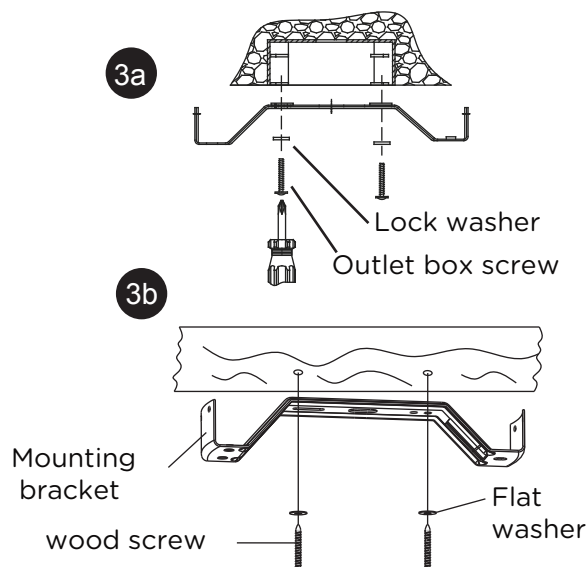
- Remove the four sets of side screws from mounting bracket and save for future use.

##### Normal masonry ceiling

- Securely attach the mounting bracket to an outlet box marked “**Acceptable for Fan Support**”, using the supplied outlet box screws with lock washers (see Fig. 3a).

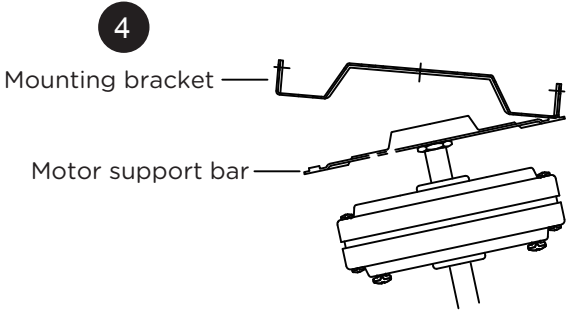
##### Wooden ceiling

- Drill two mounting holes in the ceiling joist. Securely attach the mounting bracket to the wooden ceiling as indicated below (fig. 3b).



# ASSEMBLY

- Insert the “T” bar end of motor support bar through rectangular opening on mounting bracket for hands-free wiring and later motor assembly (see Fig. 4).



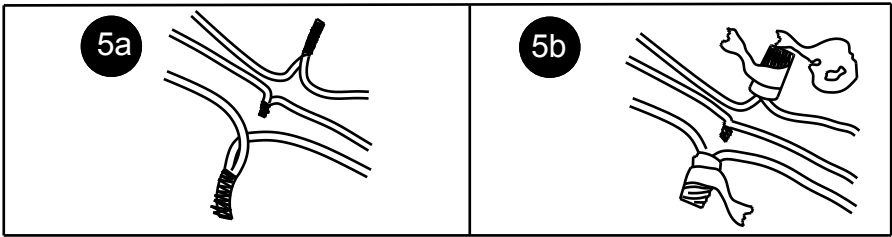
## 2. Wiring Instructions

- ⚠ IMPORTANT:** If you are not sure if the electrical outlet box and fan are grounded, contact a licensed electrician for advice. They must be grounded for safe operation.
- ⚠ WARNING:** To avoid possible electrical shock, be sure electricity is turned off at the main fuse box before wiring.

Your outlet box should have 3 wires. If they are not there, contact a certified electrician to help set his part up. Match up and connect wires from the ceiling fan to the wires from your outlet box according to the chart below.

Connect with wire connector	On fan	In outlet box
Ground and ground	Ground wire (green)	Ground wire (typically copper or green)
Motor, light and live	Motor wire (black) Light wire (blue)	Live wire (typically black)
Neutral and neutral	Neutral wire (white)	Neutral wire (white)

- Screw wire connectors (3 are provided) onto the tops of the twisted wires (see Fig. 5a).
- Fasten them with electrical tape (see Fig. 5b).



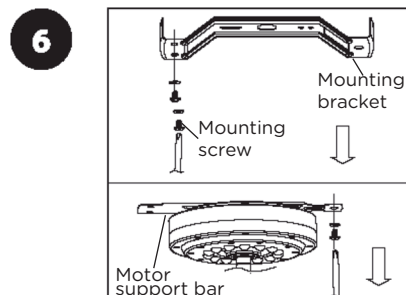
**NOTE:** The silver cord is only a safety support cable to prevent the fan from falling. Secure the steel cable to the ceiling joist with the short wood screw and flat washer provided.

- ⚠ WARNING:** Be sure no bare wire or wire strands are visible after making connection. Place green and white connections on opposite side of box from the black and blue (if applicable) connections.

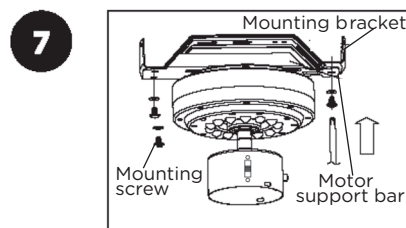
# ASSEMBLY

## 3. Motor Assembly

- Remove the mounting screws and washers from the mounting bracket and the motor support bar (see Fig. 6).

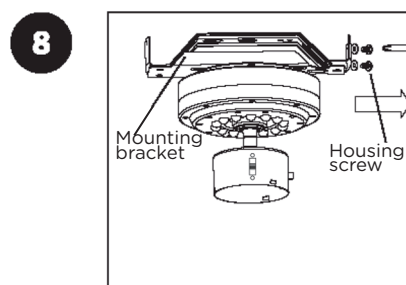


- Lift motor support bar to mounting bracket. Align holes and secure with washers and screws (see Fig. 7).

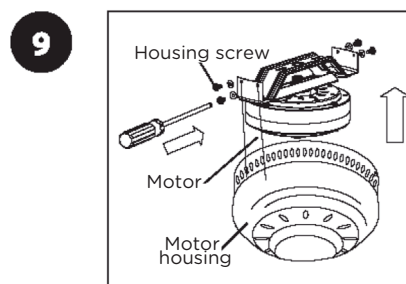


## 4. Motor Housing Assembly

- Remove the housing screws and washers from the mounting bracket (see Fig. 8).

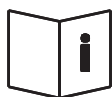


- Slide motor housing over motor assembly. Secure to the sides of mounting bracket with housing screws (see Fig. 9).

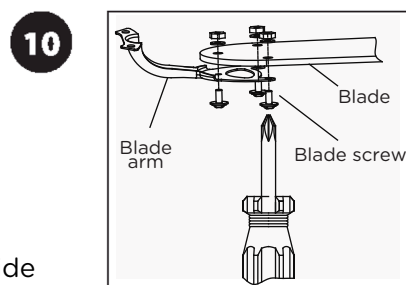


## 5. Blade and blade arm

- Using the fan blade screws, attach the fan blades between the fan blade arm with desired finished side faced-down on the fan blade arm (see Fig. 10).



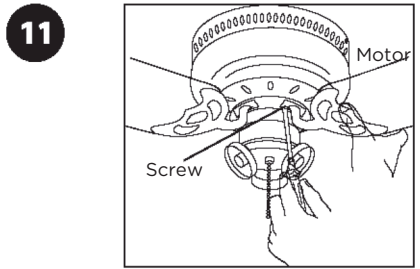
**NOTE:** This ceiling fan includes 5 dual-finished blades. Depending on personal preference, choose the side that best suits the decor or furniture of your room.



# ASSEMBLY

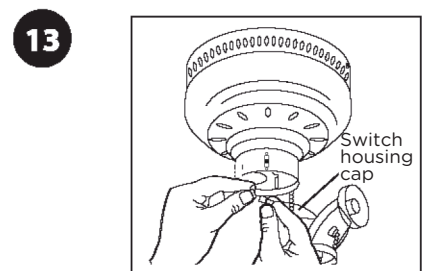
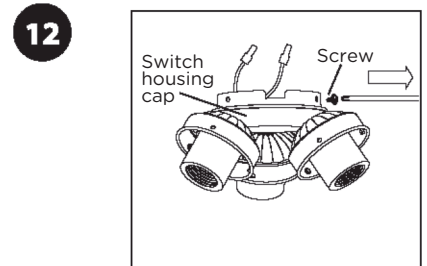
## 6. Attach blade assembly to motor

- If there are plastic tabs shaped like bottle caps, remove and discard them. These are stabilizers that protect the motor during shipping.
- Remove the screws on the bottom of the motor and use them to attach the blade assembly to the motor. Ensure the screws are tightened (see Fig. 11).



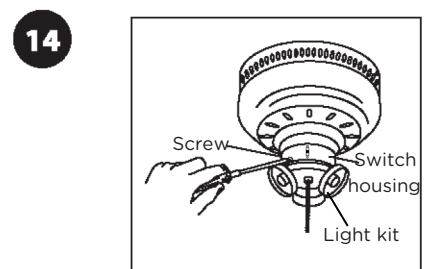
## 7. Connect switch housing

- Remove the screws from the switch housing cap and save for use in next step (see Fig. 12).
- Connect the wire inside the switch housing cap by snapping the male and female connectors together. Match white wires together and blue wire to black wire together (see Fig. 13).



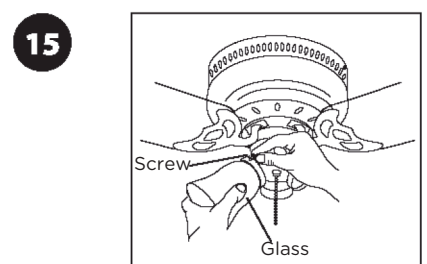
## 8. Attach light kit

- Attach the light kit by bringing up the switch housing cap to the fan switch housing.
- Then tightly secure the screws that were previously removed from the switch housing cap (see Fig. 14).



## 9. Attach glass shade

- Unscrew the glass screw from light kit. Place the neck of glass into light housing cup. Insert and tighten the glass screws (see Fig. 15).



## ASSEMBLY

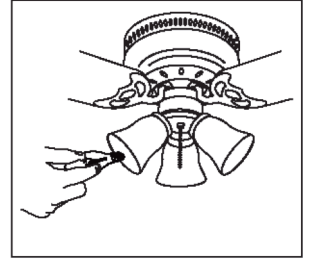
### 10. Install bulb

- Install three 60 W candelabra base bulbs (not included) (see Fig. 16).

#### **⚠ IMPORTANT NOTE:**

If you use bulbs that total over 190 W, the ceiling fan can be damaged.

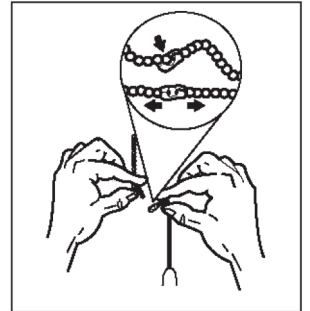
16



17

### 11. Extend pull chain

- Assemble decorative fob chain from hardware bag to fan and light kit pull chain. Insert end of chain into chain coupling. Check chains are held by lightly pulling both chains in coupling (see Fig. 17).



## OPERATION

### Turn fan on/off and select fan speed

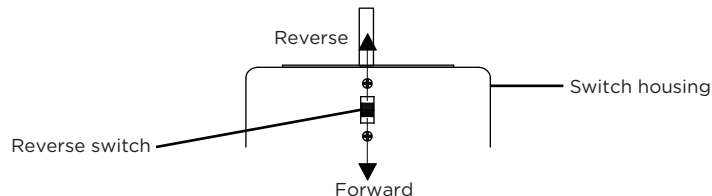
- Restore power to ceiling fan and test for proper operation.
- The fan pull chain controls the fan speed settings:
  1. Turn on the fan at high speed.
  2. Turn on the fan at medium speed.
  3. Turn on the fan at low speed.
  4. Turn off the fan.
- The light pull chain controls the status of light.
  1. Turn on the light.
  2. Turn off the light.

### Forward and reverse direction function

This ceiling fan is equipped with reverse switch for downward or upward air-flow.



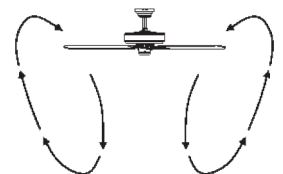
**NOTE:** Do not change the direction of rotation while the fan blades are in motion. To change direction, turn off the fan and wait for the blades to stop rotating before setting the switch to the desired rotation direction, either forward or reverse.



### Forward function

- On this setting, the fan will turn counter-clockwise to create a cooling effect. Use this function during warmer weather to circulate the hot air away from your living space (see Fig. 18).

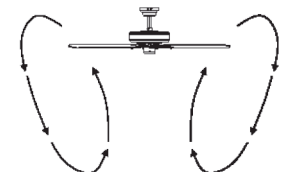
18



### Reverse function

- On this setting, the fan will turn clockwise. Use this function during cooler weather to re-circulate warm air down the living space (see Fig. 19).

19



## MAINTENANCE

- Because of the fan's natural movement, some connections may become loose. Check the support connections, brackets and blade attachments twice a year. Make sure they are secure.
- There is no need to oil your fan. The motor has permanently-lubricated bearings.

## CARE AND CLEANING

- Dust your fan periodically with a soft, dry cloth. Do not use harsh cleaners or materials as they may damage the unit.
- To prevent bending the blades during cleaning, support the blades so that no pressure is applied to them.




### Caution!

Do not allow water to come in contact with fan blades or the ceiling fan. Doing so will create fire and/or shock hazards, damaging property.

## TROUBLESHOOTING

If problems persist, seek help from a certified electrician.

Problem	Possible reason	Solution
Fan is noisy during operation	<ul style="list-style-type: none"><li>Blade screws are loose.</li><li>The mounting bracket or canopy is loose.</li><li>Screws securing decorative housing to hanger are loose.</li><li>Lamp shades or bulbs are loose.</li><li>Screws securing downrod to hanger are loose.</li><li>Wire connectors are vibrating against the inside of canopy.</li><li>Light kit or light bulb is not firmly attached.</li><li>Canopy is rattling against ceiling.</li><li>Motor housing screws have come loose.</li></ul>	<ul style="list-style-type: none"><li>Tighten screws on blades with a screwdriver.</li><li>Check and fasten the screws.</li><li>Check and fasten the screws.</li><li>Tighten by hand, as necessary.</li><li>Check and fasten screws.</li><li>Disconnect power at fuse box, loosen canopy and re-position connectors.</li><li>Remove and re-attach.</li><li>Be sure canopy is not touching ceiling.</li><li>Check and fasten the screws.</li></ul>
Fan does not start	<ul style="list-style-type: none"><li>Fuse or circuit breaker is blown.</li><li>Loose or incorrect power line connections to the fan or switch wires.</li></ul>	<ul style="list-style-type: none"><li>Check main fuse and branch circuit fuses or circuit breaker. Repair as necessary.</li><li>Check all the wire connections to fan and housing wiring. Repair as necessary.</li></ul> <div><b>Caution!</b> Make sure the main power is turned off.</div>

## TROUBLESHOOTING

Problem	Possible reason	Solution
Light does not work	<ul style="list-style-type: none"> <li>Wires are not properly connected.</li> <li>Light bulbs are faulty.</li> </ul>	<ul style="list-style-type: none"> <li>Ensure wire connector in switch housing is connected.</li> <li>Unscrew light bulbs and discard properly.</li> </ul>
Fan does not seem to move much air	<ul style="list-style-type: none"> <li>Fan is in reverse (blades are moving in clockwise direction).</li> <li>Fan is not properly located.</li> </ul>	<ul style="list-style-type: none"> <li>Counter-clockwise (forward) is recommended in warm weather. Turn off fan and power and wait for rotation to stop. Use the eraser end of a pencil to change the forward/reverse slide switch.</li> <li>Place fan in the centre of the room so there is at least 12" (30 cm) between the end of the blades and walls or other obstructions.</li> </ul>
Fan wobbles or shakes excessively	<ul style="list-style-type: none"> <li>Screws securing fan blade clips to motor are loose.</li> <li>Fan blade and its blade clip are not fastened securely.</li> <li>Canopy and mounting bracket are not tightened securely.</li> </ul>	<ul style="list-style-type: none"> <li>Make sure that screws which attach fan blade clips to motor are fastened and tightened.</li> <li>Tighten screws of fan blade to blade clip securely.</li> <li>Ensure that canopy and mounting bracket are tightened securely to ceiling joist.</li> </ul>

## ENVIRONMENTAL PROTECTION



Discarded electrical appliances are recyclable and should not be discarded in your regular domestic waste! Please actively support us in conserving resources and protecting the environment by returning this appliance to a collection centre (if available).

Battery reclamation (please keep to comply with the local law).

## WARRANTY

---

This Likewise product carries a one (1) year warranty against defects in workmanship and materials. Trileaf Distribution agrees to replace the defective product free of charge within the stated warranty period, when returned by the original purchaser with proof of purchase. This product is not guaranteed against wear or breakage due to misuse and/or abuse.

Subject to the conditions and limitations described below, this product, if returned to us with proof of purchase within the stated warranty period and if covered under this warranty, will be repaired or replaced (with the same model, or one of equal value or specification), at our option. We will bear the cost of any repair or replacement and any costs of labour relating thereto.

These warranties are subject to the following conditions and limitations:

- a) A bill of sale verifying the purchase and purchase date must be provided;
- b) This warranty will not apply to any product or part thereof which is worn or broken or which has become inoperative due to abuse, misuse, accidental damage, neglect or lack of proper installation, operation or maintenance (as outlined in the applicable owner's manual or operating instructions) or which is being used for industrial, professional, commercial or rental purposes;
- c) This warranty will not apply to normal wear and tear or to expendable parts or accessories that may be supplied with the product that are expected to become inoperative or unusable after a reasonable period of use;
- d) This warranty will not apply to routine maintenance and consumable items such as, but not limited to, fuel, lubricants, vacuum bags, blades, belts, sandpaper, bits, fluids, tune-ups or adjustments;
- e) This warranty will not apply where damage is caused by repairs made or attempted by others (i.e. persons not authorized by the manufacturer);
- f) This warranty will not apply to any product that was sold to the original purchaser as a reconditioned or refurbished product (unless otherwise specified in writing);
- g) This warranty will not apply to any product or part thereof if any part from another manufacturer is installed therein or any repairs or alterations have been made or attempted by unauthorized persons;
- h) This warranty will not apply to normal deterioration of the exterior finish, such as, but not limited to, scratches, dents, paint chips, or to any corrosion or discolouring by heat, abrasive and chemical cleaners; and
- i) This warranty will not apply to component parts sold by and identified as the product of another company, which shall be covered under the product manufacturer's warranty, if any.

### Additional Limitations

This warranty applies only to the original purchaser and may not be transferred. Neither the retailer nor the manufacturer shall be liable for any other expense, loss or damage, including, without limitation, any indirect, incidental, consequential or exemplary damages arising in connection with the sale, use or inability to use this product.

### Notice to Consumer

This warranty gives you specific legal rights, and you may have other rights, which may vary from province to province. The provisions contained in this warranty are not intended to limit, modify, take away from, disclaim or exclude any statutory warranties set forth in any applicable provincial or federal legislation.

Made in China

Imported by

Trileaf Distribution Trifeuil Toronto, Canada M4S 2B8