

**monica**  
**61 1/2" floor lamp**



INSTRUCTIONS PERTAINING TO RISK OF FIRE OR INJURY TO PERSONS  
READ ALL INSTRUCTIONS

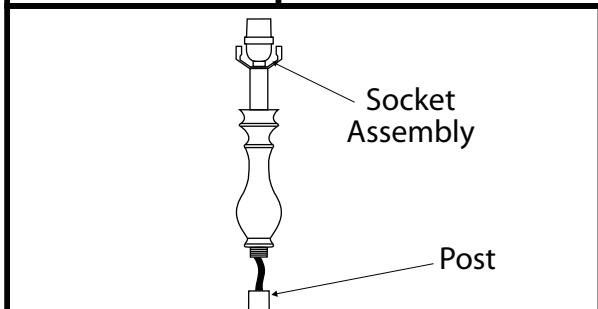
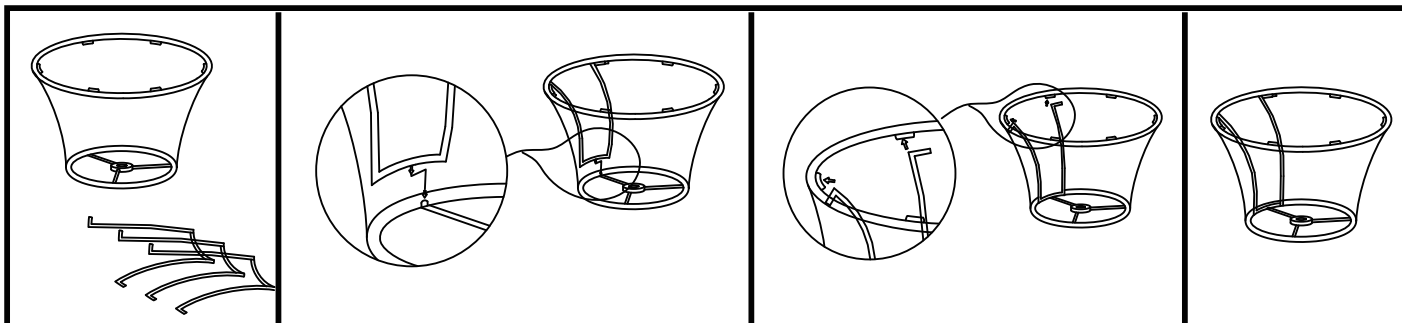
**IMPORTANT SAFETY  
INSTRUCTIONS**

**SAVE THESE INSTRUCTIONS**

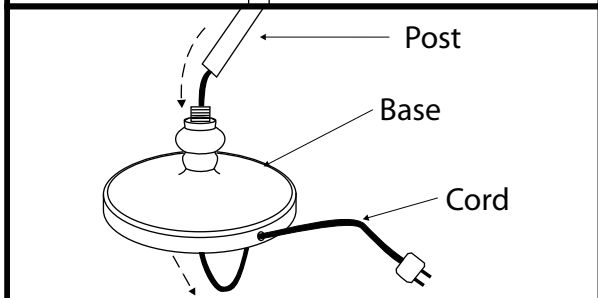
**SAFETY PRECAUTIONS:**

1. **DO NOT PLUG IN LAMP TO POWER BEFORE INSTALLATION IS COMPLETE.**
2. **⚠ CAUTION: TO PREVENT ELECTRICAL SHOCK, MATCH WIDE BLADE OF PLUG TO WIDE SLOT, AND FULLY INSERT.**
3. **TO CLEAN THE FIXTURE, TURN OFF THE POWER, WAIT FOR IT TO COOL, AND WIPE THE FIXTURE WITH A CLEAN, SOFT CLOTH.**

**INSTALLATION:**

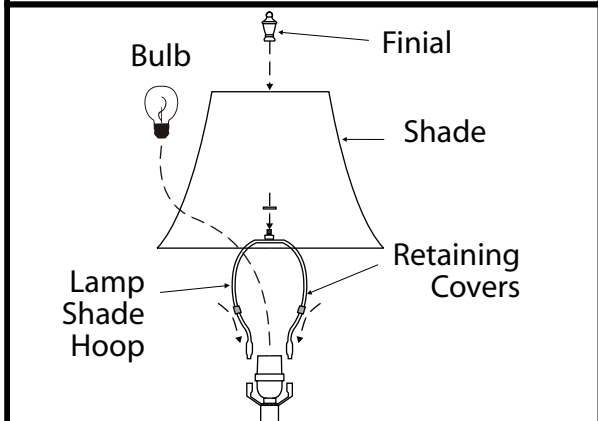


**1.** Mount the support frame as shown.



**2.** Thread the socket assembly onto the top post. On the floor lamp, thread all remaining posts together.

**3.** Thread the base onto the bottom post. Pull the extra cord out of the base.



**4.** Position the lamp shade hoop onto the fixture socket and slide the retaining covers over the joints to secure (1 per side).

**5.** Install bulb of proper type and wattage into the lamp (not included).

**6.** Tighten the shade by finial as shown.