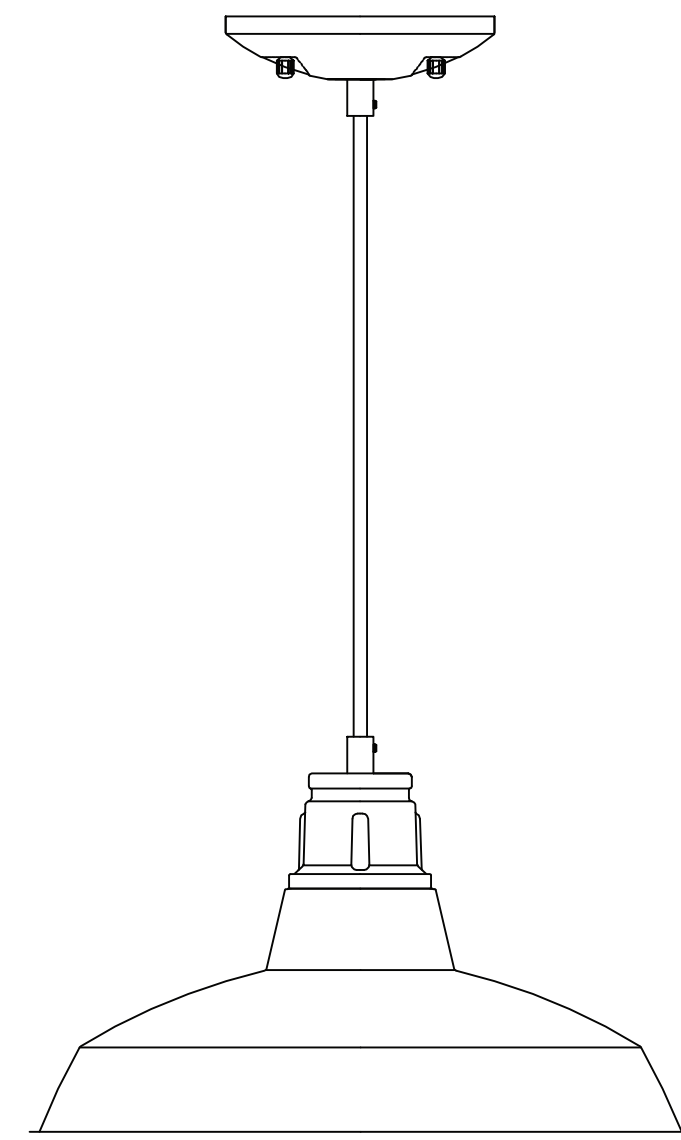


CANVAS<sup>TM/MC</sup>

WINSTONE 1-LIGHT PENDANT

MODEL NO. 052-2654-8



ASSEMBLY INSTRUCTIONS

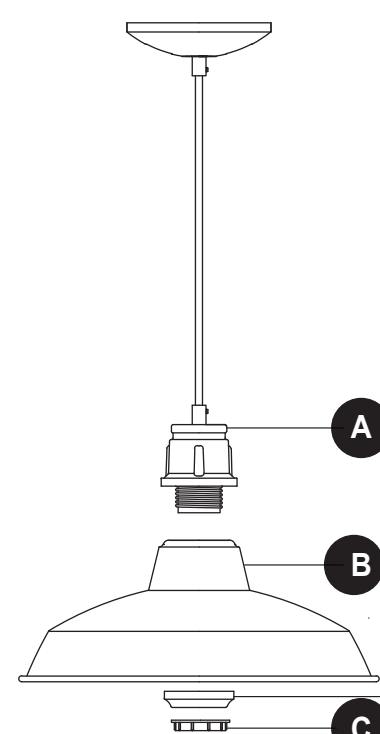
IMPORTANT: Please read this manual carefully before attempting to assemble, operate or install the product, and save it for reference.

2

Table of Contents

Package and Hardware Contents	2
Important Safety Instructions	3
Assembly Preparation	3
Assembly Instructions	4
Care and Maintenance/Troubleshooting	6
Warranty	6

Package and Hardware Contents



Mounting Strip Qty. 1

Mounting Screw Qty. 2

Outlet Box Screw Qty. 2

Wire Nut Qty. 2

Cap Nut Qty. 2

PART	DESCRIPTION	QUANTITY
A	Fixture Body	1
B	Metal Shade	1
C	Socket Ring	1
D	Cap	1

CAUTION

The following rules must be adhered to when assembling the product. If you have any doubts about how to install the product or if it fails to work properly, contact a local, licensed electrician. Failure to comply with these requirements could lead to an electric shock or fire, which could cause serious injury or fatality.

Ensure:

- Power at the main fuse box is disconnected before installing the fixture.
- The fixture ground wire (bare or green insulated wire) is NOT connected to current-carrying wires.
- No bare wires are exposed outside the wire connectors when joining current-carrying wires.
- The insulation on wires has not been damaged during installation.
- No rough or sharp edges are in contact with any of the wires.
- Fixture wires are connected to the proper house supply wires. If you have any doubts about which house supply wire is white and which is black, contact a licensed electrician.
- Light bulbs with wattage no greater than those specified for the fixture are used.
- Power is off when installing light bulb into the fixture.

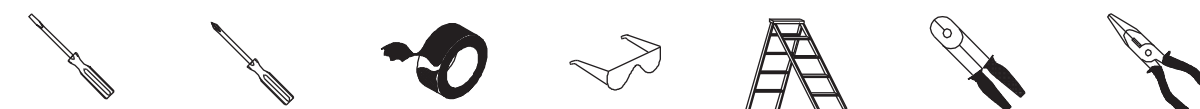
Assembly Preparation

Before beginning assembly of this product, make sure all parts are present. Compare parts with package contents list and hardware contents list. If any part is missing or damaged, do not attempt to assemble, install or operate the product.

Place all parts from the box in a cleared area and position them on the floor in front of you. Remove all packing materials and place them back into the box. Do not dispose of the packing materials until assembly is complete. Read each step carefully before beginning any assembly and make sure you understand each step.

Tools required for assembly (not included):

Flat-head screwdriver, cross-head screwdriver, electrical tape, safety glasses, ladder, wire strippers, pliers.



CANVAS<sup>TM/MC</sup>

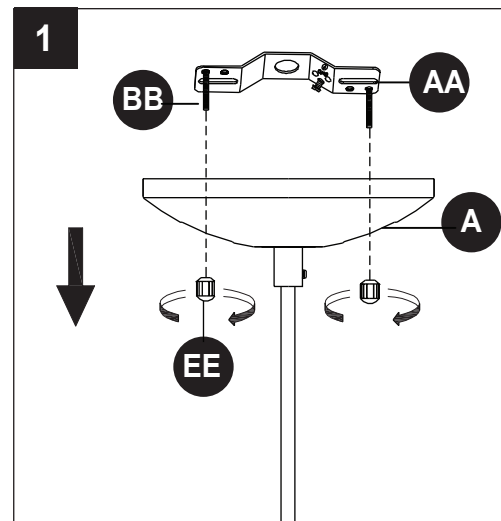
3

Important Safety Instructions

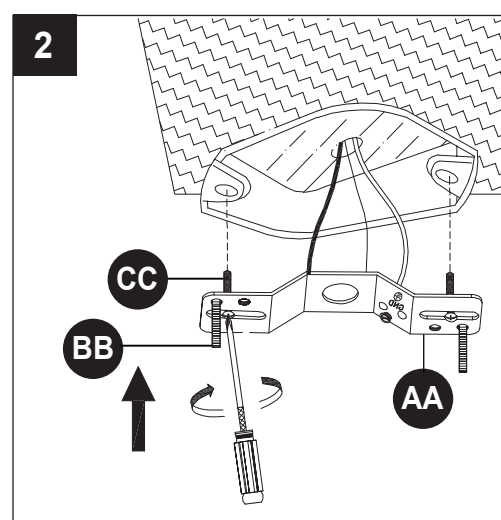
4 MODEL NO. 052-2654-8

Assembly Instructions

1. Remove the preassembled cap nuts (EE) from the mounting screws (BB). Save for later use. Separate the mounting strip (AA) from the canopy (A).

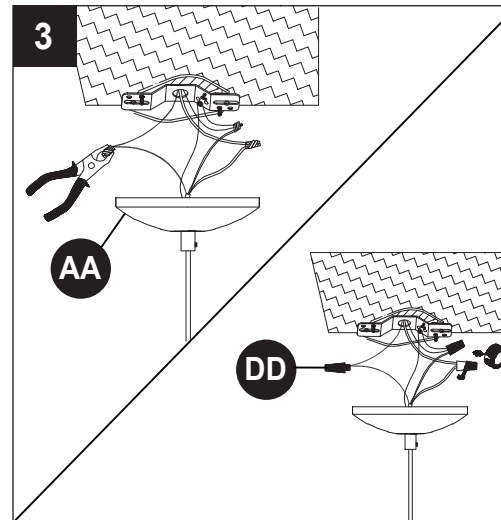


2. Attach the mounting strip (AA) to outlet box (not included) using the outlet box screws (CC).



**Note:** Mounting screws (BB) should protrude out from the outlet box.

3. Strip 3/4" (19 mm) of insulation from fixture wire ends. Twist stripped ends together with pliers (not included). Connect the white, ribbed or tinned wire without writing from the fixture with the white wire from the outlet box. Connect the black, smooth, or un-tinned wire with writing from the fixture to the black wire from the outlet box in same manner. Snip ends. Wrap the ground wire from the outlet box around the green screw preassembled on the mounting strip (AA), and then connect the ground wire from the outlet box to the ground wire from the fixture.



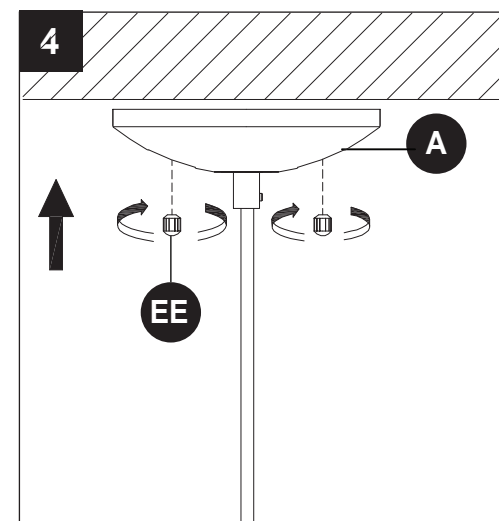
Attach wire nuts (DD) to ends. Tape wire nuts (DD) and wires together with electrical tape (not included).

CANVAS<sup>TM/MC</sup>

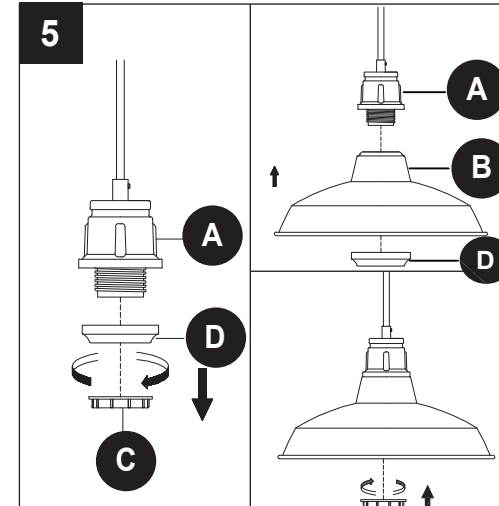
5

Assembly Instructions

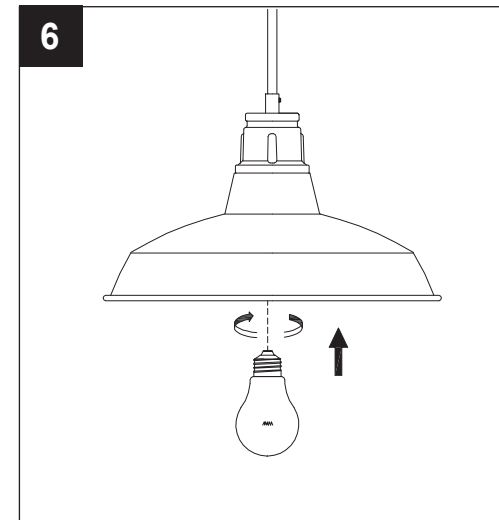
4. Place canopy (A) over the mounting screws (BB), securing with previously removed cap nuts (EE).



5. Remove socket ring (C) from fixture body (A). Then place the metal shade (B) and cap (D) over the socket, securing with socket ring (C).



6. Install the bulb. Use one 100 W (max.) E26 bulb (not included).



6 MODEL NO. 052-2654-8

Care and Maintenance/Troubleshooting

CARE AND MAINTENANCE

- Shut off main power before cleaning light with damp cloth or window cleaner. Do not use abrasive cleansers.
- Bulb replacement: Use one 100 W (max.) E26 bulb or equivalent CFLs.

TROUBLESHOOTING

PROBLEM	POSSIBLE CAUSE	CORRECTIVE ACTION
Bulb won't light.	1. Bulb is burned out. 2. Power is off. 3. Faulty wire connection. 4. Faulty switch.	1. Replace the bulb. 2. Check if power supply is on. 3. Check wiring. 4. Test or replace the switch.
Fuse blows out or circuit breaker trips when light is turned on.	1. Crossed wires or power wire is grounding out.	1a. Check the wiring connection. 1b. Consult a qualified electrician.

This CANVAS<sup>®</sup> product carries a one (1) year warranty against defects in workmanship and materials.

Trileaf Distribution agrees to replace a defective product free of charge within the stated warranty period, when returned by the original purchaser with proof of purchase. This product is not guaranteed against wear or breakage due to misuse and/or abuse.

Made in China

Imported by  
Trileaf Distribution Trifeuil Toronto, Canada M4S 2B8

Warranty