

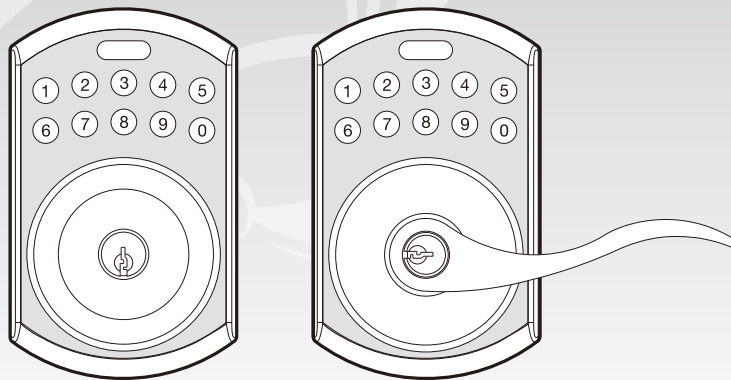
120x165mm

85x165mm



ELECTRONIC LEVER

model no. 046-7243-2

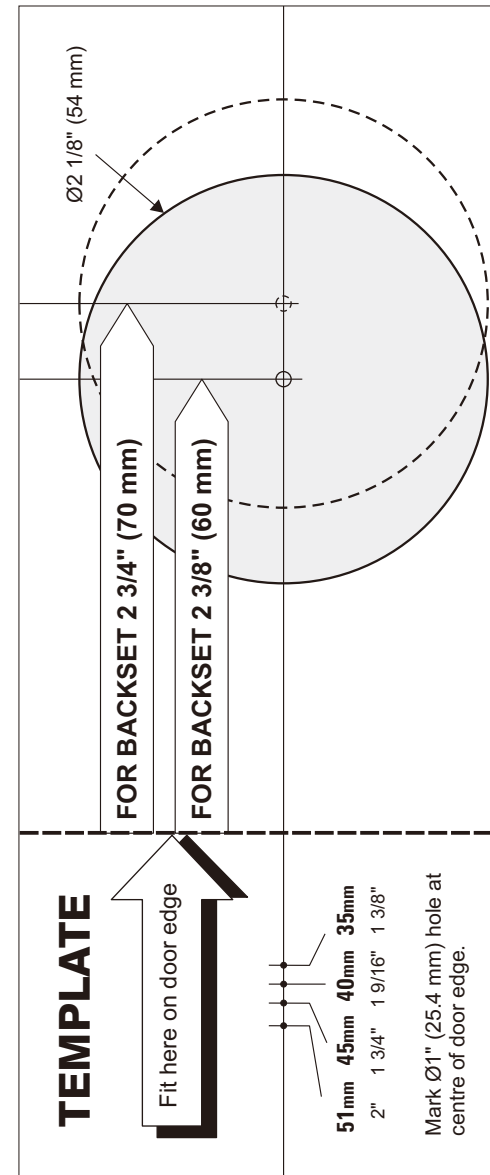


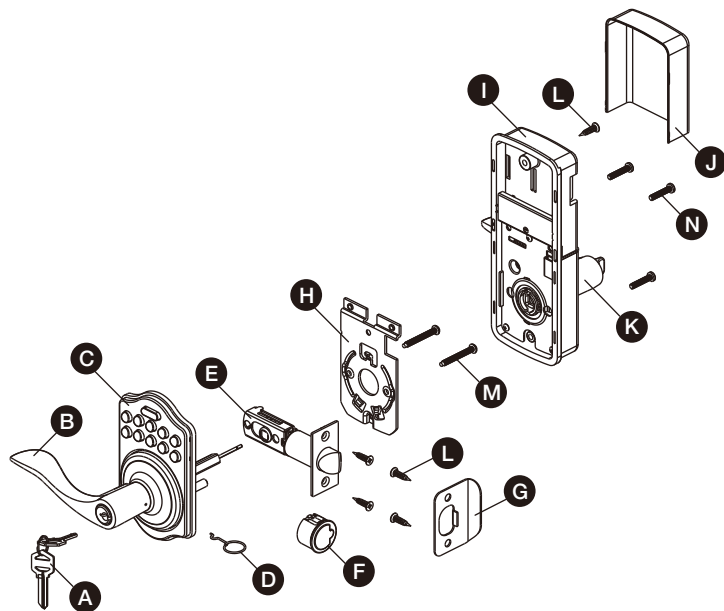
Toll-free Number: 1-800-268-6591

IMPORTANT: Please read this manual carefully before installing this deadbolt lock and save it for reference.

Instruction Manual

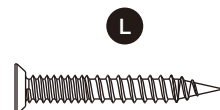
G-PTR-01



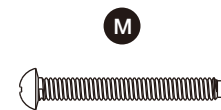


Part	Description	Quantity
A	Key	2
B	Exterior Lever (Knob)	1
C	Exterior Lock Body	1
D	Lever Removal Tool	1
E	Latch	1
F	Drive-in Sleeve	1
G	Strike Plate	1
H	Mounting Plate	1
I	Interior Lock Body	1
J	Battery Cover	1
K	Interior Lever (Knob)	1

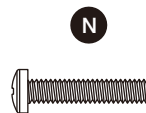
HARDWARE SCREWS CONTENTS



Wood Screws Qty. 5



Mounting Plate Screws Qty. 2

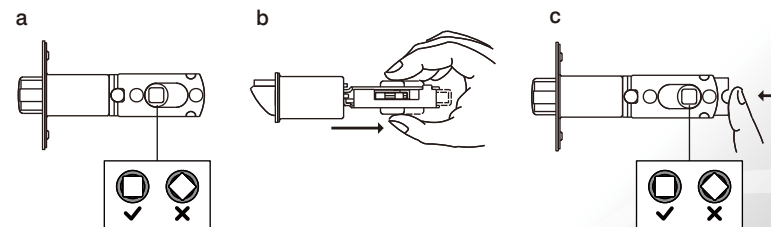


Installation Screws Qty. 3

LATCH BACKSET ADJUSTMENT

For adjustments please refer to the following illustrations.

- The illustration shows a backset of 2 3/8" (60 mm).
- Pull the cam all the way to the right, to adjust backset to 2 3/4" (70 mm).
- To restore back to 2 3/8" (60 mm), push the adjustable sleeve all the way to the left.



Note:

The cam inside the latch should be in the square position (as shown in the image).

1. Backset Determination

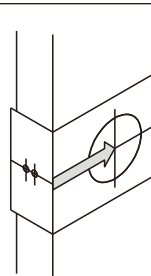
Backset is a distance from door edge to centre of hole on door face.

Adjustable latch fits both backset of 2 3/8" (60 mm) and 2 3/4" (70 mm).

Replace the old lock with the new one

To replace the old lock with this product on the same door, please confirm the backset for the latch and that the specifications for the face plate match. Please also refer to the following instructions to adjust the backset and face plate to match the existing door's specifications.

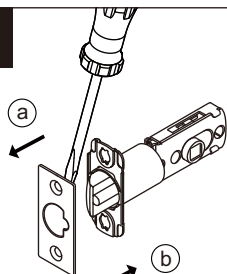
1

**2. Change Latch Face**

Determine which latch mounting method will be used and make necessary adjustments. No adjustment required for square latch face plate.

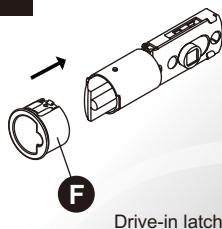
- Use a flat screwdriver to separate the face plate.
- Snap selected latch face onto back plate.

2

**Drive-in Installation**

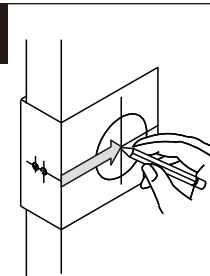
Remove original latch faceplate. Align the drive-in sleeve (F) as illustrated and snap into the latch case.

2.1

**3. Mark the Door with Template**

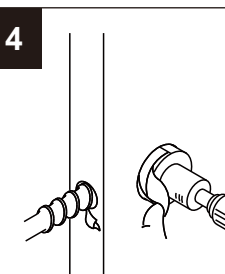
Select the height and backset as desired on the door face; use the TEMPLATE as an indication to mark the centre of the circle on the door face and the centre of the door edge.

3

**4. Drill Holes**

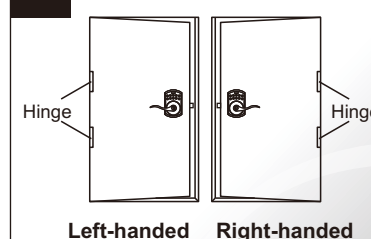
Using the marks as a guide to drill a hole Ø2 1/8" (54 mm) through the door face for the lockset, then a hole of Ø1" (25.4 mm) for latch.

4

**5. Identify Door Handing**

Face the door from the outside. The door is left-handed if the hinges are on the left side of the door, whereas the door is right-handed if the hinges are on the right side of the door.

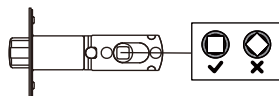
5



6. Chisel Space for Latch Faceplate

Insert the latch and lay the faceplate against the door edge. Chisel 5/32" (4 mm) deep along the outline to allow the faceplate to be aligned with the door edge.

Note: It is not necessary to chisel the door edge for the faceplate installation if you use the drive-in latch.



7. Install Latch

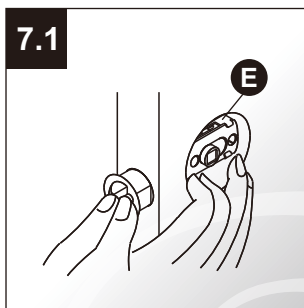
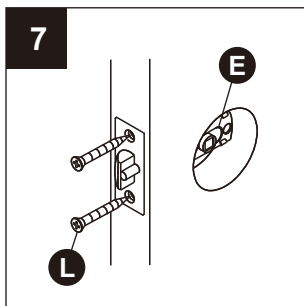
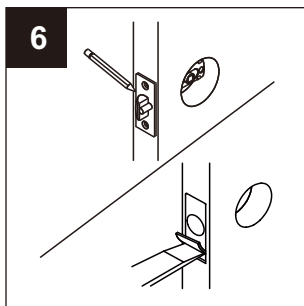
Insert the latch (E) into the door. Make sure the cam is on the bottom of the latch. Use 2 wood screws (L) to secure latch. Do not fully tighten the screws until lock is completely installed.

Hardware Used

L Wood screws  x2

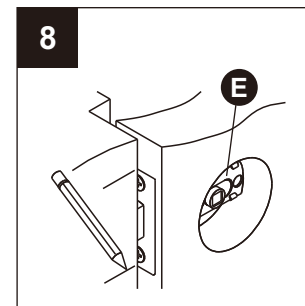
Install Drive-in Latch

Drive the latch (E) into the hole on edge of door.



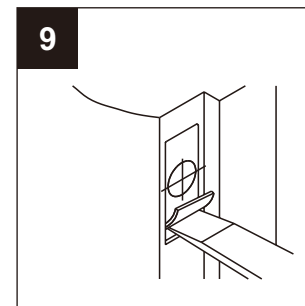
8. Mark the Outline of Strike

Half-close the door and lay the latchbolt against the door frame. Mark the position of faceplate as a guide. Place the strike against the door frame and mark its perimeter. Make sure the centre of strike is perfectly aligned with the centre of faceplate.



9. Chisel Space for Strike

Drill a Ø1" (25.4 mm) hole with 1/2" (13 mm) depth on the centre of strike outline. Then use the chisel to gouge out the door frame 1/16" (1.6 mm) deep within the traced outline. Make sure to chisel deep enough to allow the strike to lay flush with the frame surface.

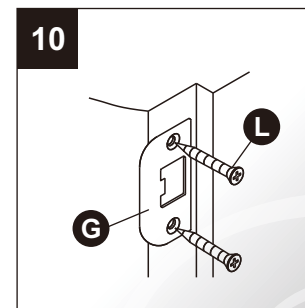


10. Install Strike on Door Frame

Install the strike plate (G) into the door frame and tighten with wood screws (L).

Hardware Used

L Wood screws  x2



11. Install Keypad Assembly

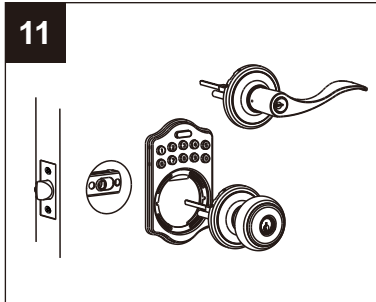
Place the lever/knobset against keypad with tailpiece in vertical position inserted through cam of the latch.



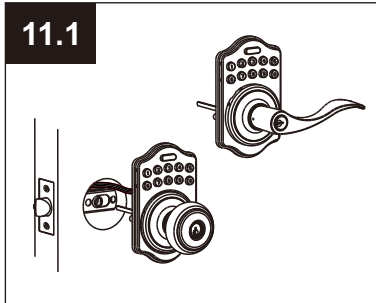
The spindle must be vertical.

Pass the IC wire over the latch to the interior side of door.

11




11.1

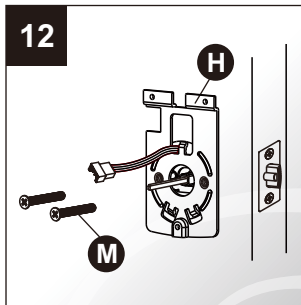
**12. Install the Mounting Plate**

Pass the IC wire through the wire hole on the mounting plate and fix the mounting plate with screws. If outside lock assembly is lopsided, please loosen the screws to adjust its position and tighten the screws again.

Hardware Used

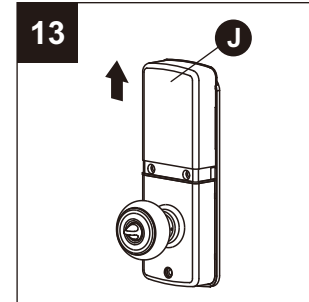
M Mounting plate screws  x2

12

**13. Install Receiver Module**

Remove the battery cover (J) (push it up first, then put it out.)


13



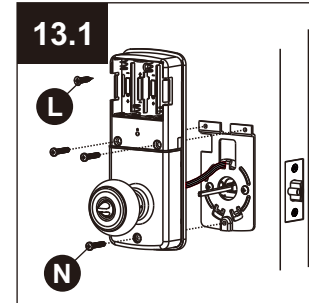
Connect the IC wire and ensure the turn piece is horizontal, so that the tailpiece is able to engage with the inside lever/knob. Then attach receiver module to the door with screws. It is optional to use the attached wood screw. (Wood screw only for wood door.)

Hardware Used

L Wood screws  x1

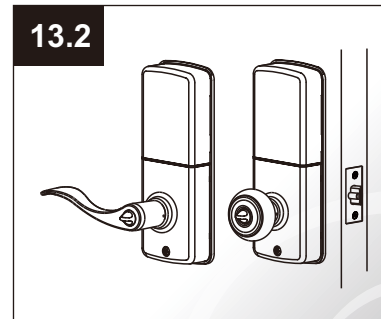
N Installation screws  x3

13.1



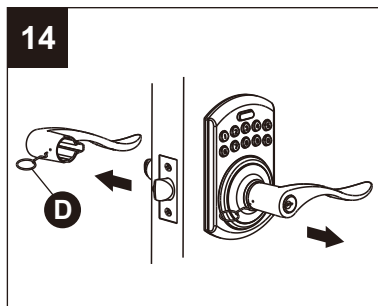
Insert 4 (AA) 1.5 V alkaline batteries and slide the battery cover back onto the receiver module.

13.2

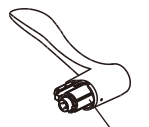


14. Change Lever Handing

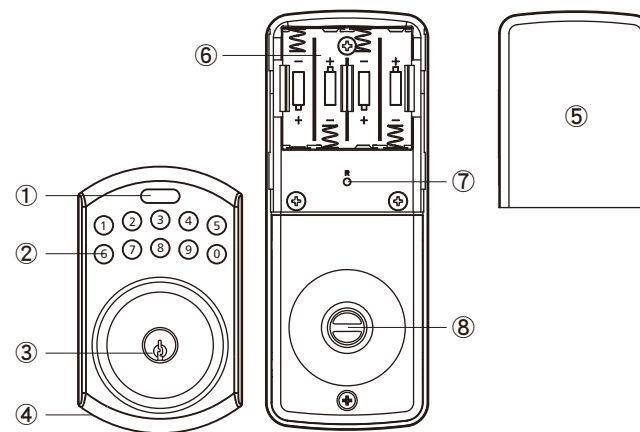
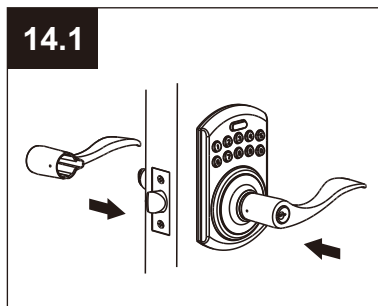
Make sure the levers are unlocked. Insert the lever removal tool (D) into the small hole on the neck of lever and apply pressure to depress the catch and pull out the lever from the stem. Follow the same steps to remove interior lever and exchange the position of inside and outside levers.



Remove the cylinder from lever and insert it into opposite lever. Then install the levers and make sure the small hole on the neck of lever aligns over the catch perfectly. Rotate the levers to see if it operates well.



Cylinder



1	Programming Button	Programming button is for entering codes, clearing errors and setting function. It is also used to lock the door.
2	Number Buttons	Input the user codes. Each user code is 4–10 digits in length.
3	Cylinder	Lock/unlock the lockset from exterior.
4	Gasket	Prevent water permeating into lockset.
5	Battery Lid	Slide the lid to change the batteries.
6	Battery Holder	Holds four AA (1.5 V) alkaline batteries.
7	R Button (Reset)	Restore default settings.
8	Turn-Button	Lock/unlock the lockset from interior.

CARE AND MAINTENANCE

- (1) Do not use any chemical liquid or lubricating oil with additives to clean the lock body. It will damage the surface or mainboard.
- (2) Alkaline batteries are recommended in order to stabilize the power supply.
If you do not use alkaline, battery performance will be reduced greatly.
- (3) All settings will be retained in the memory even if the batteries are completed dead.

Keep the door open while programming to avoid being locked out accidentally.

The lock contains one factory-preset user code but can be programmed to store up to a total of six additional unique user codes. Codes can be added and deleted at any time. For first-time programming, use factory default programming code.

It's recommended to change the default programming code and default user code right after you install the lock.

Every programming step should be done within 6 seconds.

Operation Indicator Sounds and Lights

Sounds	Lights	Meaning
1 Beep	Flashes Green Once	Successful Operation
2 Long Beeps	Flashes Green Twice	Successful Programming
3 Beeps	Flashes Red 3 Times	Operation Error
5 Beeps	Flashes Red 5 Times	Code Input Error; System Shuts Down
10 Rapid Beeps	Flashes Red 10 Times	Low Battery Power
3 Long Beeps	Flashes Orange 3 Times	Default Setting Restored
	Flashes Orange Slowly	In Programming Mode



Default programming code (PC): 0000

Default user code (UC): 1234

Your new programming code (PC) _____

Your new user code (UC) _____

The same programming code and user code cannot be accepted.

The lock will cease operation if unauthorized codes are entered over 5 times.

The system will unfreeze after 45 seconds.

1. Change Programming Code



2. Add New User Code



Remark :

Up to 6 sets of user codes can be saved. User codes should be 4–10 digits in length.

3. Delete an Existing User Code



4. Delete All User Codes at Once



Remark: Auto-locking and keypad locking functions will be invalid when user codes are deleted. The lock can only be operated by key during the time.

5. Toggle Autolock On/Off

Enter PC → GARRISON → 5 → GARRISON

Remark: The preset delay-time is 30 seconds, you can change that time by following the previous instructions.
Repeat the steps to cancel the auto-locking function.

6. Set Autolock Time Delay

Enter PC → GARRISON → 6 → GARRISON → Enter Seconds (10~99) → GARRISON

Remark: 10~99 seconds delay-time available.

7. Toggle Mute On/Off

Enter PC → GARRISON → 7 → GARRISON

Remark: Repeat same steps to turn beeper On/Off.
LED illumination is still functioning when it is in mute.
But there will be no any warning alarm.

8. Enable/Disable All User Codes

Enter PC → GARRISON → 8 → GARRISON

Remark: Auto-locking and keypad locking functions will be invalid when user codes are disabled.
The lock can only be operated by key during the time.
Repeat the steps to enable the user codes again.

9. Create a Disposable User Code

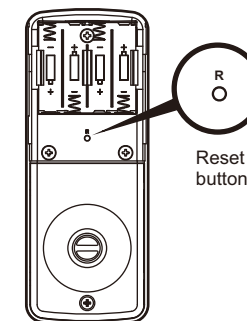
Enter PC → GARRISON → 9 → GARRISON → Enter new disposable UC → GARRISON

Remark: Disposable code will be no longer valid once being used.

10. Restore All Preset Lock Settings

Press (R)

Remark: Press and hold the "R" button for 5 seconds.
The programming will be complete after you hear 3 long beeps.



Reset button

WARRANTY

The manufacturer warrants the product to be free from defects in material and workmanship for a period of 12 months from the original date of purchase. If you discover a defect in the product covered by this warranty, we will repair or replace the item at our option using new or refurbished components.

EXCLUSIONS

This warranty covers defects in manufacturing discovered while using the products as recommended by the manufacturer rather than occurred by an act of God, and damages caused by misuse, abuse, and unauthorized modification.

LIMITED LIABILITY

The manufacturer will not be held liable for incidental or consequential losses or damages from any act of God.

This Garrison product carries a five (5) year finish warranty and a lifetime warranty on mechanical components such as lockset chassis. Any electronic components, such as PCB board are guaranteed for a period of one (1) year.

Trileaf Distribution agrees to repair or replace a defective product free of charge within the stated warranty period, when returned by the original purchaser with proof of purchase.

This product is not guaranteed against wear or breakage due to misuse and/or abuse.

Made in Taiwan
Imported by Trileaf Distribution Trifeuil Toronto, Canada M4S 2B8