

SKYLINK® Quick Guide

Alarm System Starter Kit

Protect your Home the Smart Way!

Model: SK-200



1. Package Contents

NOTE: 6 x AAA- and 1 x AA-Batteries required to setup the SkylinkNet Alarm System.



2. Install the Internet Hub

1. Connect your Hub to an available Port on your Internet Router using the Ethernet cable.



2. Plug in the Power Adapter.



3. Insert 4 x AAA-Batteries in the Hub for backup power in case of power outage. (Optional)



3. Insert Batteries for Sensors

1. Slightly push both sides of the Window/Door Sensor and pull out the cover to insert an AAA-Battery.



2. Use a coin to open the Motion Sensor and insert an AA-Battery.



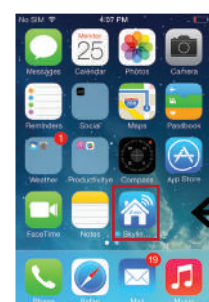
4. Download the SkylinkNet App



1. Tap on App Store

2. Tap on Search Icon and search for "SkylinkNet"

3. Tap on Free Button to download the App.



4. When download is completed, it will show on your HomeScreen.

NOTE: Only the "SkylinkNet" App will work with the Internet Hub.



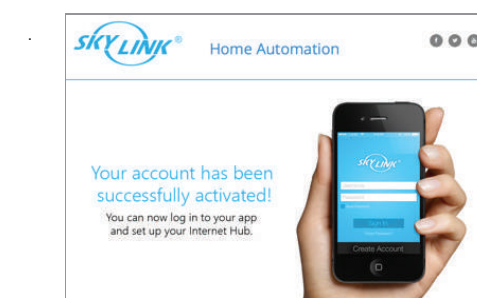
5. Create a SkylinkNet Account



1. Open the SkylinkNet App and tap on "Create Account".

2. Enter your information and tap on "Sign Up".

3. Check your email to activate your account and tap on "Continue" to log in.

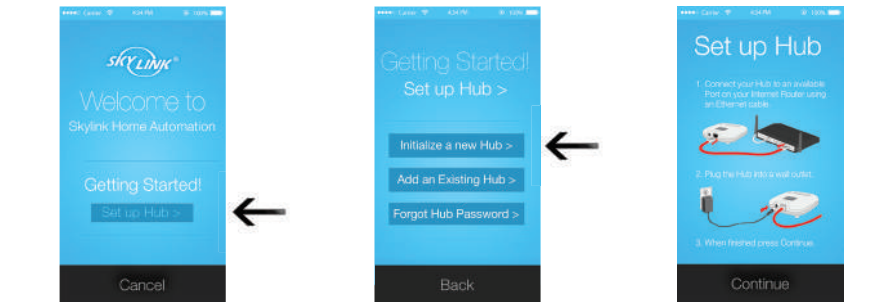


4. Click on the link from the email to activate your account.



5. Now you are ready to login to your account.

6. Set up the Internet Hub



1. Tap on "Set up Hub >".

2. Tap on "Initialize a new Hub >".

3. Follow the instruction on screen to connect the Internet Hub.

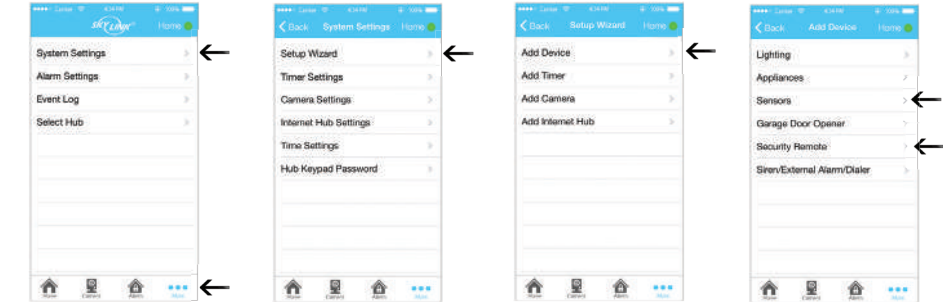


4. Enter your information and tap on "Continue".

5. Follow the instruction on screen to reset the Internet Hub and tap "Continue".

6. Hub is added and you will see a green or red dot indicating if it's connected to the Hub.

7. Add Sensors and Keychain Remote

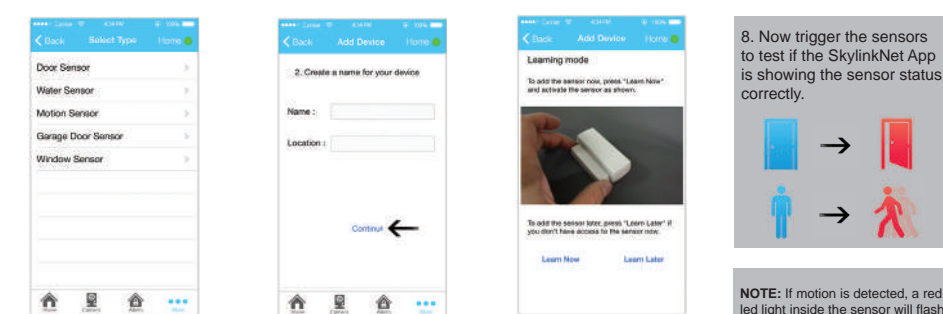


1. Go to "More" and tap on "System Settings".

2. Tap on "Setup Wizard".

3. Tap on "Add Device".

4. Tap on "Sensors" or "Security Remote".
(If you select Security Remote, skip to Step 6)

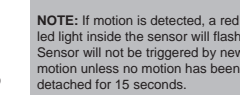


5. Select the type of sensor you want to add.

6. Name your sensor and location and tap "Continue".

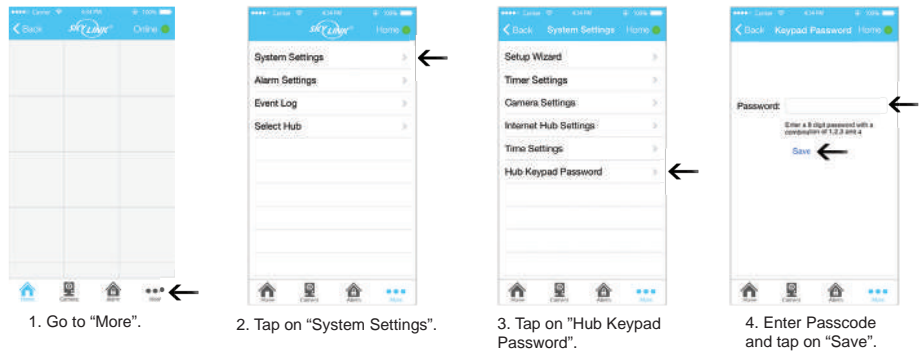
7. Tap the "Learn Now" button and follow the video to activate the sensor.

8. Now trigger the sensors to test if the SkylinkNet App is showing the sensor status correctly.

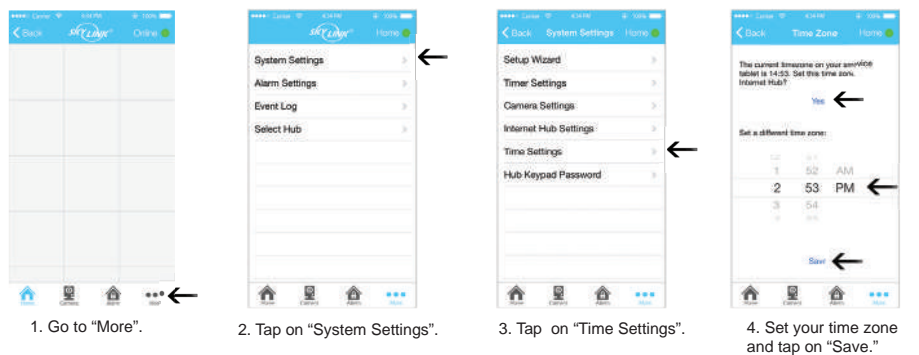


NOTE: If motion is detected, a red led light inside the sensor will flash. Sensor will not be triggered by new motion unless no motion has been detected for 15 seconds.

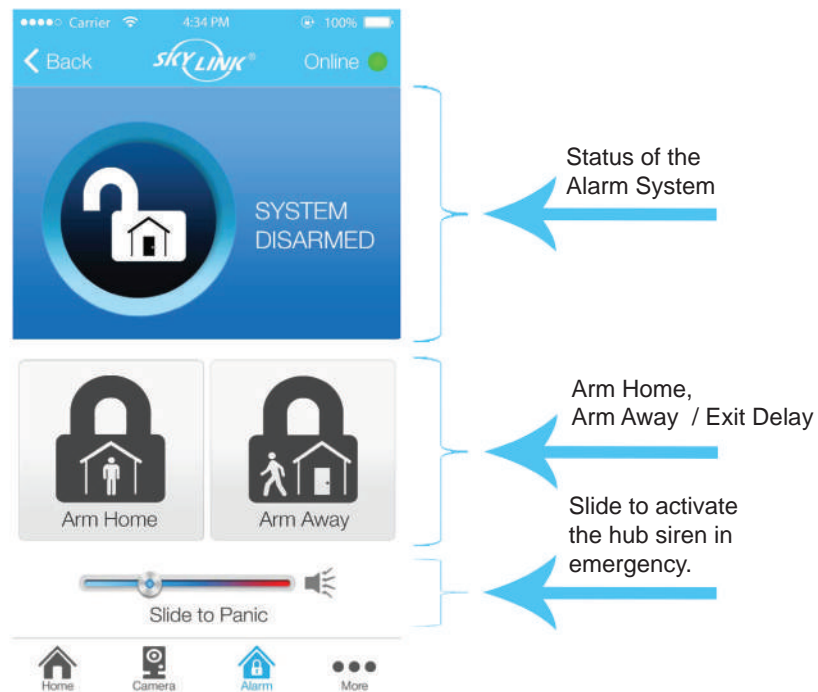
8. Setup Hub Keypad Password



9. Setup Time Zone



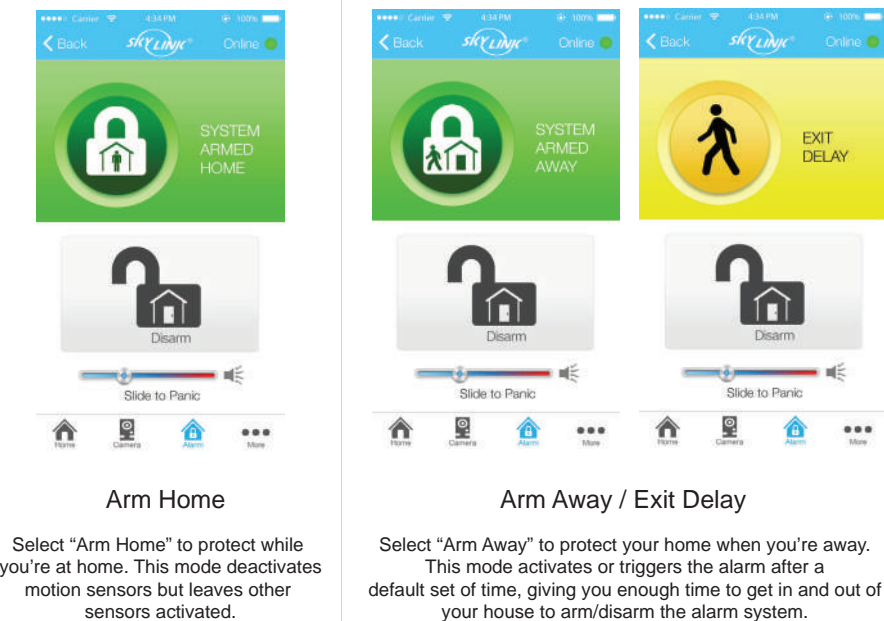
13. Alarm Screen Overview



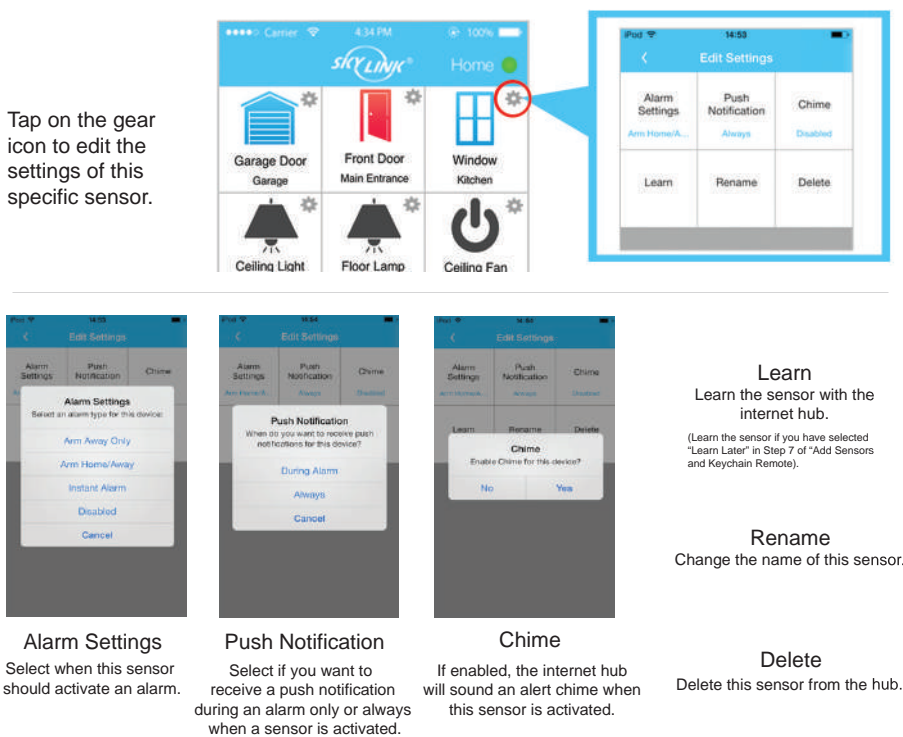
10. Home Screen Overview



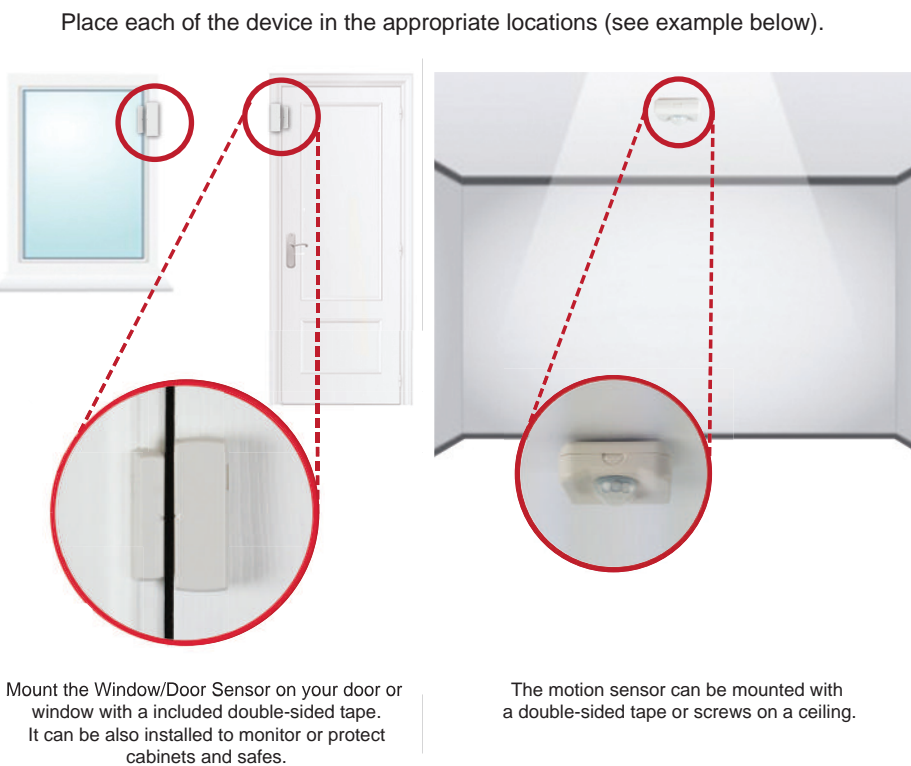
14. Arm Home / Arm Away



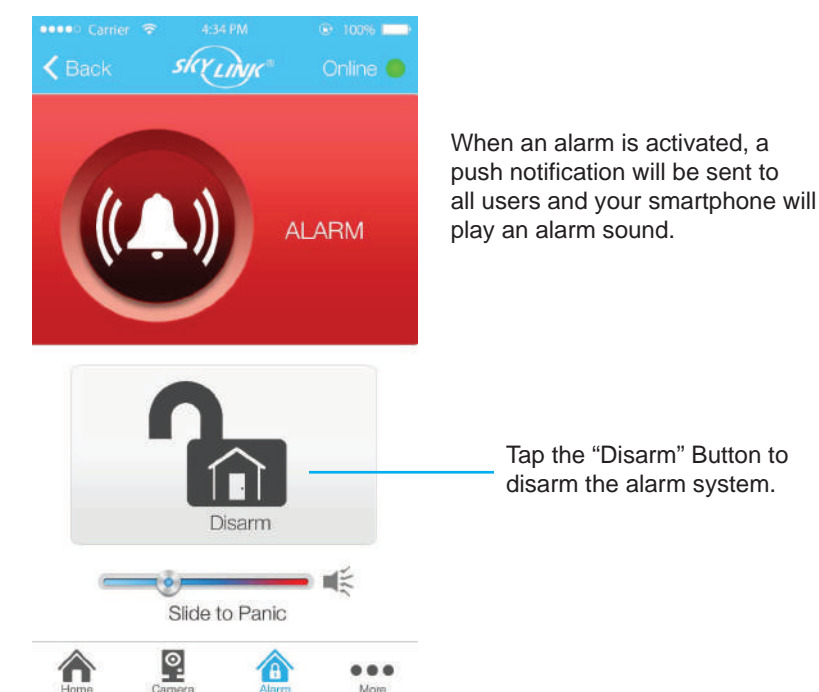
11. Sensor Settings



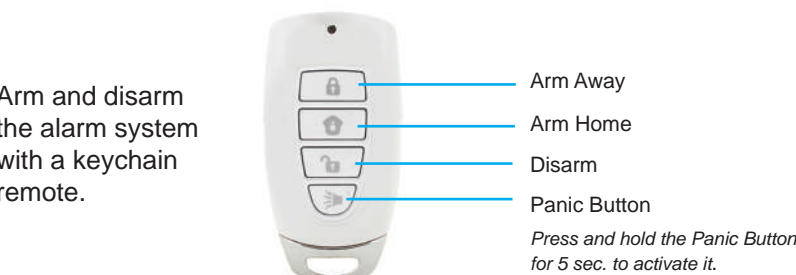
12. Place the Sensors



15. Disarm Alarm System



16. Keychain Remote



17. Event Log

