



STAINPRO

USER GUIDE
1623 SERIES



IMPORTANT SAFETY INSTRUCTIONS

READ ALL INSTRUCTIONS BEFORE USING YOUR DEEP CLEANER.

When using an electrical appliance, basic precautions should be observed, including the following:

⚠ WARNING

TO REDUCE THE RISK OF FIRE, ELECTRIC SHOCK, OR INJURY:

- » Do not immerse.
- » Use only on surfaces moistened by cleaning process.
- » Always connect to a properly grounded outlet.
- » See Grounding Instructions.
- » Unplug from outlet when not in use and before conducting maintenance or troubleshooting.
- » Do not leave machine when it is plugged in.
- » Do not service machine when it is plugged in.
- » Do not use with damaged cord or plug.
- » If appliance is not working as it should, has been dropped, damaged, left outdoors, or dropped into water, have it repaired at an authorized Service Center.
- » Use indoors only.
- » Do not pull or carry by cord, use cord as a handle, close door on cord, pull cord around sharp corners or edges, run appliance over cord, or expose cord to heated surfaces.

- » Unplug by grasping the plug, not the cord.
- » Do not handle plug or appliance with wet hands.
- » Do not put any object into appliance openings, use with blocked opening, or restrict air flow.
- » Do not expose hair, loose clothing, fingers or body parts to openings or moving parts.
- » Do not pick up hot or burning objects.
- » Do not pick up flammable or combustible materials (lighter fluid, gasoline, kerosene, etc.) or use in the presence of explosive liquids or vapor.
- » Do not use appliance in an enclosed space filled with vapors given off by oil base paint, paint thinner, some moth proofing substances, flammable dust, or other explosive or toxic vapors.
- » Do not pick up toxic material (chlorine bleach, ammonia, drain cleaner, gasoline, etc.).
- » Do not modify the 3-prong grounded plug.
- » Do not allow to be used as a toy.
- » Do not use for any purpose other than described in this User's Guide.
- » Do not operate the appliance unless the belt door is securely assembled in the location provided.
- » Do not unplug by pulling on the cord.
- » Use only manufacturer's recommended attachments.
- » Use only cleaning products formulated by BISSELL for use in this appliance to prevent internal component damage. See the cleaning fluid section of this guide.
- » Keep openings free of dust, lint, hair, etc.
- » Do not point attachment nozzle at people or animals.
- » Keep appliance on a level surface.
- » Turn off all controls before unplugging.
- » Be extra careful when cleaning stairs.
- » Close attention is necessary when used by or near children.

SAVE THESE INSTRUCTIONS FOR FUTURE USE

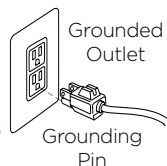
This model is for household use only. Commercial use of this unit voids the manufacturer's warranty.

⚠ WARNING

Improper connection of the equipment-grounding conductor can result in a risk of electrical shock. Check with a qualified electrician or service person if you aren't sure if the outlet is properly grounded. **DO NOT MODIFY THE PLUG.** If it will not fit the outlet, have a proper outlet installed by a qualified electrician. This appliance is designed for use on a nominal 120-volt circuit, and has a grounding attachment plug that looks like the plug in the illustration. Make certain that the appliance is connected to an outlet having the same configuration as the plug. No plug adapter should be used with this appliance.

GROUNDING INSTRUCTIONS

This appliance must be connected to a grounded wiring system. If it should malfunction or break down, grounding provides a safe path of least resistance for electrical current, reducing the risk of electrical shock. The cord for this appliance has an equipment-grounding conductor and a grounding plug. It must only be plugged into an outlet that is properly installed and grounded in accordance with all local codes and ordinances.



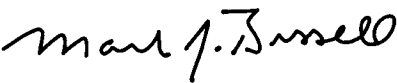
**Thanks for buying a
BISSELL deep cleaner!**

We're glad you purchased a BISSELL deep cleaner. Everything we know about floor care went into the design and construction of this complete, high-tech home cleaning system. By purchasing this product you are helping BISSELL with our commitment to reducing our impact on the environment through an expanding range of sustainable design efforts.

Your deep cleaner is well made, and we back it with a limited one-year warranty. We also stand behind it with a knowledgeable, dedicated Consumer Care department, so, should you ever have a problem, you'll receive fast, considerate assistance.

My great-grandfather invented the floor sweeper in 1876. Today, BISSELL is a global leader in the design, manufacture, and service of high quality homecare products like your deep cleaner.

Thanks again, from all of us at BISSELL.



Mark J. Bissell
Chairman & CEO

Safety Instructions.....2

Product View.....4-5

Cleaning Formulas.....6

Assembly7

Special Features8

Operation 9-12

Maintenance and Care 13

Troubleshooting 14

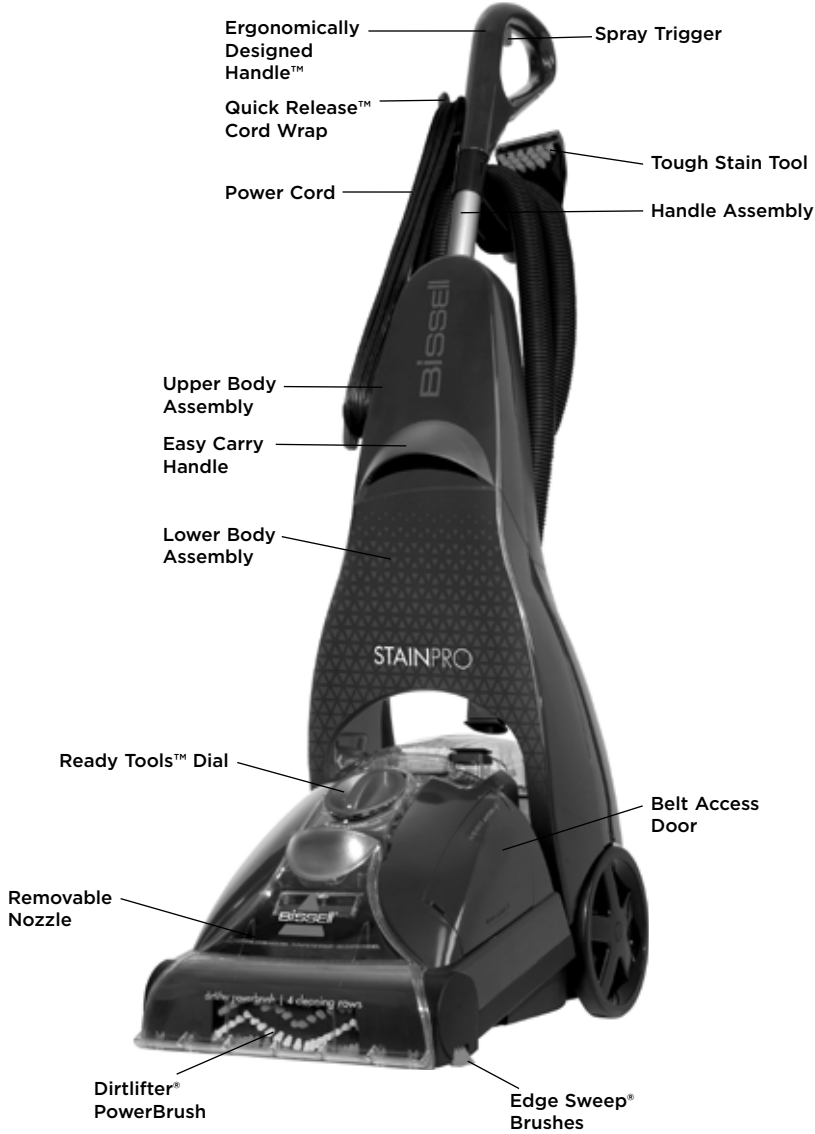
Warranty 15

Service..... 15

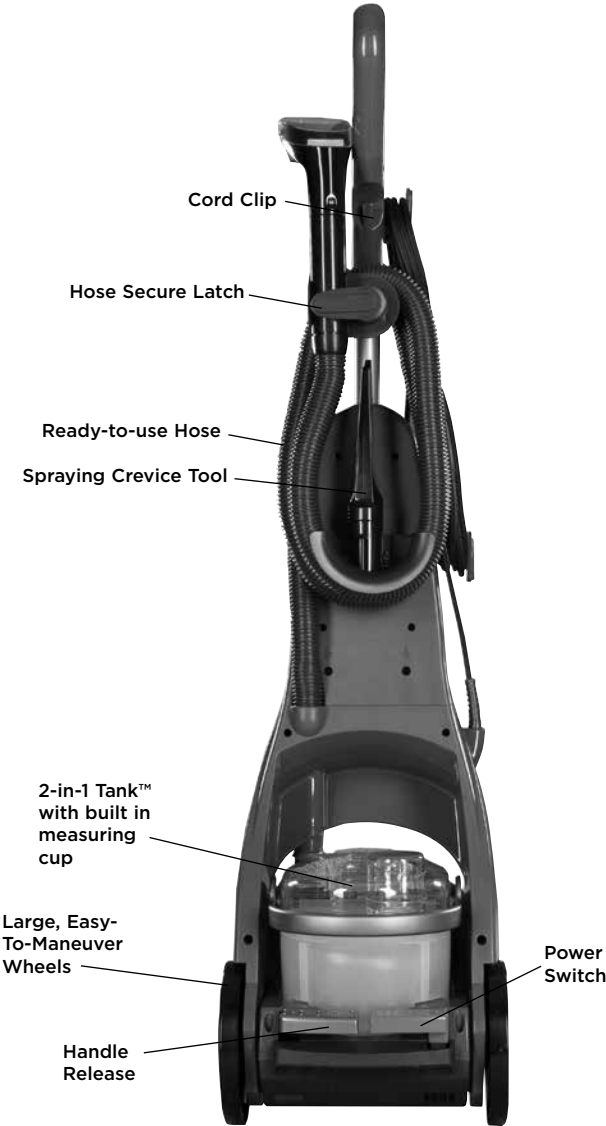
Product Registration..... 16

Consumer Care..... 16

Product View - front



Product View - back



Cleaning Formulas


⚠️WARNING

To reduce the risk of fire and electric shock due to internal component damage, use only BISSELL cleaning fluids intended for use with the deep cleaner. Non-BISSELL cleaning solutions may harm the machine and void the warranty.

Keep plenty of genuine BISSELL 2X* formula on hand so you can clean and protect whenever it fits your schedule.

Always use genuine BISSELL deep cleaning formulas. Non-BISSELL cleaning solutions may harm the machine and will void the warranty.

PRETREAT PRE TREAT SPOTS AND STAINS TO IMPROVE CARPET CLEANING PERFORMANCE	
	
Stain PreTreat	Pet Stain PreTreat
Pretreat to penetrate and loosen tough stains	Pretreat to help remove tough pet stains and odors

PROFESSIONAL 2X* CLEANING FORMULA	2X* CLEANING FORMULA				
					
Professional Deep Cleaning	Pet Stain & Odor	DeepClean & Protect	Allergen Cleansing	DeepClean + Refresh	Deep Clean + Oxy
Out cleans all other formulas <i>Includes Scotchgard™ Protector</i>	Removes tough pet stains and contains patented odor removal technology <i>Includes Scotchgard™ Protector</i>	Deep cleans carpets and protects from future stains with Scotchgard™ Protector	Helps remove pet & pollen allergens	Powerful cleaning with a refreshing scent	Removes deep down dirt, pet stains, & pet odor

ONLY BISSELL Protects from future stains with Scotchgard™ Protector.
 Scotchgard™ is a trademark of 3M®.
 *2.5 fl. oz. of 2X concentrated formula is equivalent to 5.0 fl. oz. of non-concentrated formula.

Tips Before Carpet Cleaning

- If cleaning an entire room, consider moving your furniture to another area.
- Pre-treat stains with BISSELL PreTreat to improve performance on coffee stains and ground-in dirt.

Assembly

WARNING

Do not plug in your cleaner until you have completely assembled it per the following instructions and are familiar with all instructions and operating procedures.

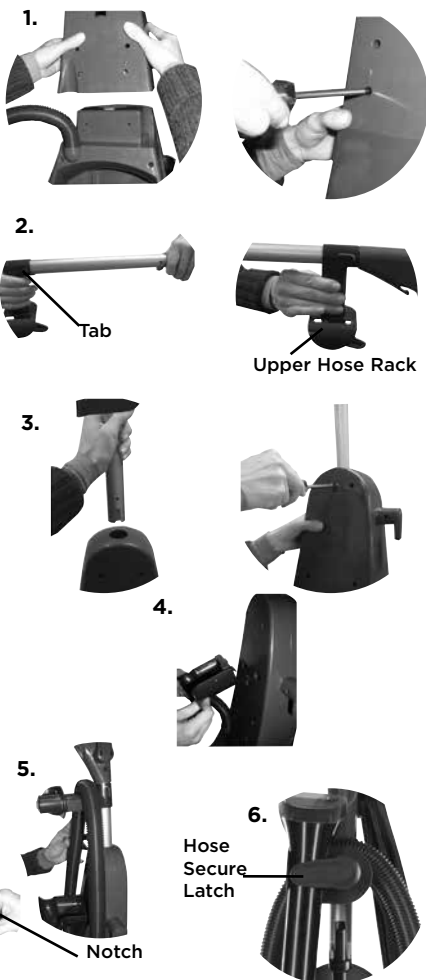
Your deep cleaner comes in five easy to assemble components:

- Handle assembly
- Upper body assembly
- Upper hose rack
- Lower body assembly
- Lower hose rack

Three Phillips head screws are included and can be found taped to the handle assembly.

The only tool you will need to assemble your cleaner is a Phillips head screwdriver.

1. Slide upper body assembly onto lower body and secure with two screws.
2. With the “tabs” on upper hose rack pointing toward top of handle, attach upper hose rack to handle assembly by sliding it to top of handle until it can go no further. Turn hose rack until it snaps into place.
3. Slide handle assembly down into upper body until it will go no further and secure with screw.
4. Attach lower hose rack to back of upper body by pushing into open slots and sliding down until it snaps into place.
5. Wrap flex hose around hose rack and secure it into notched out holder as shown.
6. Keep flex hose locked in place with hose secure latch.



Special features of your BISSELL deep cleaner

⚠ WARNING

To reduce the risk of fire, use only BISSELL advanced deep cleaning formula for full size machines in your deep cleaner. Use of cleaning formulas that contain lemon or pine oil may damage this appliance and void the warranty. Chemical spot cleaners or solvent-based soil removers should not be used. These products may react with the plastic materials used in your deep cleaner causing cracking or pitting.

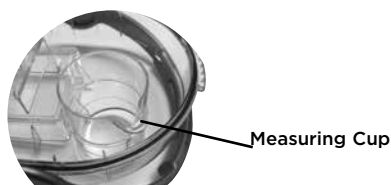
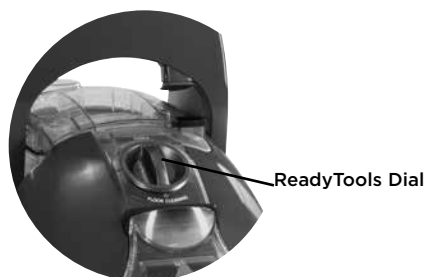
Your BISSELL deep cleaner is a home cleaning system that uses a combination of hot tap water, BISSELL advanced cleaning formula, brush agitation and suction to safely clean carpets.

DirtLifter® PowerBrush

The DirtLifter PowerBrush is designed to enhance cleaning performance. The bristle pattern safely lifts out the deep down dirt while gently grooming carpet fibers. The floating suspension self-adjusts to all carpet heights. When the power is ON and the machine is in the upright position, your carpet is protected because the brushes are lifted up off the carpet.

Ready Tools™ Dial

The Ready Tools feature allows you to choose between FLOOR CLEANING or cleaning with TOOLS simply by turning the dial. The TOOLS setting allows for above floor cleaning of upholstery, stairs, creases along baseboards, and other hard to reach areas. Simply choose the tool that is appropriate for the job, attach to flex hose and you are ready to go.



Measuring cup

Your deep cleaner is equipped with a measuring cup for adding the proper amount of formula to the 2-in-1 tank. For convenience the measuring cup is built into the lid of the 2-in-1 tank.

2-in-1 water tank

Our 2-in-1 water tank system is designed with a heavy duty bladder inside for clean water. As you clean, the clean water in the bladder will empty and mix with the cleaning formula. Dirty water pulled out of your carpet will collect around the outside of the bladder so clean and dirty water are always kept separate. This allows the user to maximize tank space, yet only carry one tank to and from the sink for emptying and filling.



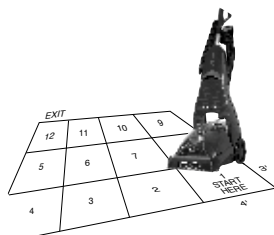
ATTENTION

Some Berber carpets have a tendency to fuzz with wear. Repeated strokes in the same area with an ordinary vacuum or deep cleaner may aggravate this condition.

Operation

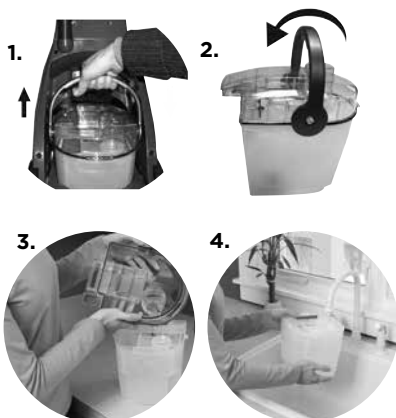
Before you clean

1. Plan activities to give your carpet time to dry.
2. **Move furniture** to another area if cleaning an entire room (optional).
3. Remove large debris and loose impediments.
4. Plan your cleaning route to leave an exit path. It is best to begin cleaning in the corner farthest from your exit.
5. **Pretreating (optional)**
Pretreating is recommended to improve cleaning effectiveness for heavily soiled carpet in high traffic areas such as entry ways and hallways. To pretreat:
 - A. Using the BISSELL Stain PreTreat, generously spray evenly over soiled area, do not overwet.
 - B. Wait 3-5 minutes before deep cleaning.
 - C. Clean as normal using your BISSELL deep cleaner, following the instructions below.



Fill the 2-in-1 water tank

1. Remove the tank from the base of the machine by lifting the tank carry handle.
2. Carry like a bucket to the sink. Rotate the handle forward to unlatch the lid. Remove lid, turn over and locate built in measuring cup.
3. Fill with BISSELL 2X concentrated formula to the indicated fill line on the built in measuring cup and pour into mouth of the bladder.
4. Fill the bladder with clean hot tap water (60°C/140°F MAX).
***Do not boil or microwave water as it can destroy the bladder.**



⚠ WARNING

To reduce the risk of fire and electric shock due to internal component damage, use only BISSELL cleaning fluids intended for use with the deep cleaner. Non-BISSELL cleaning solutions may harm the machine and void the warranty.

Operation

Fill the 2-in-1 water tank (continued)

5. Replace the top of the tank by matching the lid and tank edges. Handle must be in the forward position in order to replace lid. Rotate the handle to the carrying position to latch the lid.

Note: Remember to secure the lid and test to make sure it is secure before picking up the tank.

6. Place tank into machine base, seating firmly in place. Rotate tank handle back into latched position.



Carpet cleaning strokes

1. Plug the deep cleaner into a proper outlet. Turn the power ON by pressing the red power switch on the back of the unit with your foot.
2. With your foot, press the gray handle release lever located on the back of unit below water tank.
3. While pressing the spray trigger, make one slow forward wet pass and another back. Let the BISSELL 2X advanced deep cleaning formula and DirtLifter PowerBrush do the work for you. **Caution: Do not overwet.**
4. Release the spray trigger and make one slow forward and backward pass over the same area to remove any residual dirty water and aid in drying.
5. Repeat cleaning passes until solution being pulled up appears clean. Continue passes without pressing the trigger until you can't see any more water being suctioned up.



TIP: Remove large debris and loose impediments before deep cleaning to prevent early clogging of the lint trap.

Operation

Empty the 2-in-1 water tank/ clean removable nozzle

1. Turn power switch OFF. Remove the 2-in-1 water tank from the base using the tank carry handle. Carry the tank like a bucket to a utility sink or outside where you will dispose of the collection water. Remove the top of the tank by rotating the handle forward to unlatch lid and lifting lid off tank.
2. Empty collection water from bottom of tank.
3. After each use, remove and rinse the lint screen located on the tank lid.
4. If nozzle needs to be cleaned: remove by grasping handle at the top and pulling forward. Clean removable nozzle by rinsing under running water.
5. When finished, replace nozzle by slightly raising front of machine to line up slots on the base with the hooks on nozzle. Attach at base first and then click nozzle into place.
NOTE: If nozzle is not attached properly loss of suction will occur.
6. To continue carpet cleaning, refer back to pages 9 through 10, beginning with "Fill the 2-in-1 water tank" on page 9.

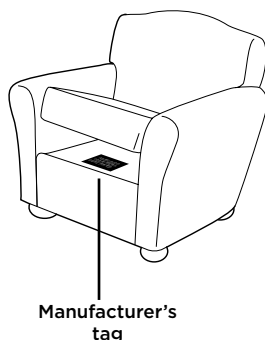
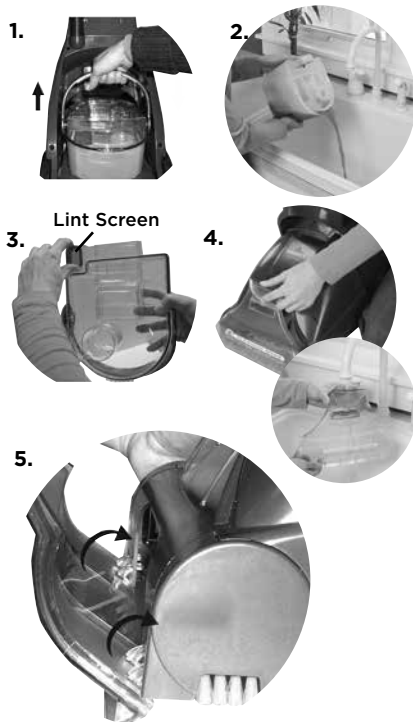
If cleaning is complete, refer to the "Maintenance and care" section on page 13.

Ready Tools™ cleaning with attachments

Your deep cleaner comes equipped with a hose and an attachment for cleaning stairs, upholstery, and more.

Important! If using the machine to clean upholstery, check upholstery tags.

1. Check manufacturer's tag before cleaning. "W" or "WS" on the tag means you can use your PowerSteamer. If the tag is coded with "X" or "S" (with a diagonal strike through), or says "Dry Clean Only," do not proceed. Do not use on velvet or silk. If manufacturer's tag is missing or not coded, check with your furniture dealer.
2. Check for colorfastness in an inconspicuous place.
3. If possible, check upholstery stuffing. Colored stuffing may bleed through fabric when wet.
4. Plan activities to give upholstery time to dry.



Operation

Ready Tools™

5. Vacuum thoroughly to pick up loose debris and pet hair. Use a vacuum with a brush attachment and a crevice tool to clean in fabric folds and tufts.
6. To begin cleaning with attachments, follow the instructions on pages 9-10 for filling the 2-in-1 water tank.
7. Set the ReadyTools dial to the TOOLS setting. This will allow spray and suction from the hose.
8. Attach the cleaning tool to the end of the hose.
9. Clean by pressing the trigger to spray solution onto the area to be cleaned. Slowly move the tool back and forth over the soiled surface. Release the trigger to suction dirty water. Continue to clean in the area, working in small sections, until dirt is removed.

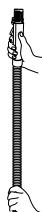
Caution: Do Not Overwet.

10. When finished cleaning, remove and rinse tool(s) in clean, running water.
11. It is recommended that you suction clean water from a bowl to rinse out the hose.
12. Before wrapping hose onto tool rack, lift end of hose and stretch out to ensure all water is cleared from hose.
13. Wrap flex hose around tool rack.
14. Empty 2-in-1 water tank and rinse out, following instructions on page 11.
15. If the ReadyTools dial becomes difficult to turn, the diverter assembly that holds the dial may need to be cleaned. To clean, first remove nozzle and locate screw that holds the diverter assembly in place. With a Phillips screwdriver, remove the screw and set aside.
16. Remove diverter assembly; hold under running water making sure water flows through and around the dial. Turn the dial about 10 times clockwise and 10 more times counter clockwise. This should free up any debris.
17. Wipe diverter assembly with a soft cloth and replace back on machine. Replace nozzle.
18. Return ReadyTools dial to FLOOR CLEANING setting.

7.



12.



15.



Screw

Run water
through here

16.



Maintenance and care

Machine care

For best results, a few simple steps can assure your machine is well maintained after your cleaning is complete.

1. Turn power switch OFF. Unplug the machine and wrap the power cord.
2. After emptying the 2-in-1 water tank, rinse it with running hot tap water, taking care to clean underneath and around the heavy duty bladder. Clean out red lint screen. Removable nozzle may be rinsed if necessary. Refer to page 11.
3. Replace the 2-in-1 water tank on the machine.
4. Any loose hair or debris can be pulled from the brush roll and thrown away.
5. To clean attachments, remove from hose and rinse in clean, running water. Dry before storing. Clean the hose by suctioning clean water from a bowl. Before wrapping back on machine, lift end of hose and stretch out to ensure all water is cleared from hose. Refer to page 12, instructions 11 and 12.
6. Wipe the machine's exterior with a soft cloth.
7. Stay off cleaned area until completely dry.

Machine storage


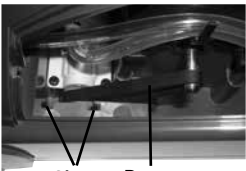
Put the unit away in a closet or basement for the next use. Store cleaner in a protected, dry area.

NOTE: To reduce the risk of a leaking condition, do not store unit where freezing may occur. Damage to internal components may result.

Troubleshooting

⚠️ WARNING

To reduce the risk of fire, electric shock or injury, unplug from the outlet before servicing.

Problem	Possible causes	Remedies
Reduced Spray OR No Spray	Bladder may be empty	Turn power switch OFF; Refill bladder with clean hot tap water.
	2-in-1 tank may not be seated properly.	Turn power switch OFF; remove tank and reseal tanks.
	Pump may have lost prime.	Turn power switch OFF; after 1 minute turn ON and depress spray release trigger.
	The pump belt may be broken.	Turn power switch OFF and unplug from the outlet. To check if a pump belt has broken, you will need a flat head screwdriver.
	<p>A.</p>  <p>B.</p>  <p>Slots Pump Belt</p>	<p>A. Insert the blade end into the slot of the belt access door to release. Examine the belt for breakage. You should be able to see the pump belt looped around the motor shaft. If it is broken or missing, a replacement belt may be ordered at www.bissell.com or by calling BISSELL Consumer Services at 1-800-263-2535. Complete installation instructions will accompany the replacement belt.</p> <p>B. When replacing belt access door be sure to line up slots of belt access door with slots in machine, slide door into place and snap shut.</p>
DirtLifter PowerBrush Does Not Turn	The brush belt or pump belt is off or broken	Refer to Remedy 4 above to check if brush belt or pump belt is broken.
Cleaner Not Picking Up Solution	Removable nozzle may not be properly attached.	Make sure nozzle is on correctly by slightly raising front of machine to line up slots on the base of the machine with the hooks on nozzle. Attach at base first and then click nozzle into place.
	2-in-1 tank lid is not properly installed.	Re-install lid; refer to the image on page 10.
	2-in-1 tank is not properly seated.	2-in-1 tank must be firmly seated to function; remove and reseal 2-in-1 tank.
	2-in-1 tank has picked up maximum dirty water.	Empty 2-in-1 tank and refill, refer to the Operation section.
	The lint screen may be clogged	Clean out lint screen. Refer to page 11.

Warranty

If you need additional instruction regarding this warranty or have questions regarding what it may cover, please contact BISSELL Consumer Care by E-mail, telephone, or regular mail as described below.

Limited One-Year Warranty

Subject to the *EXCEPTIONS AND EXCLUSIONS identified below, upon receipt of the product BISSELL will repair or replace (with new or remanufactured components or products), at BISSELL's option, free of charge from the date of purchase by the original purchaser, for one year any defective or malfunctioning part.

See information below on "If your BISSELL product should require service".

This warranty applies to product used for personal, and not commercial or rental service. This warranty does not apply to fans or routine maintenance components such as filters, belts, or brushes. Damage or malfunction caused by negligence, abuse, neglect, unauthorized repair, or any other use not in accordance with the User's Guide is not covered.

BISSELL IS NOT LIABLE FOR INCIDENTAL OR CONSEQUENTIAL DAMAGES OF ANY NATURE ASSOCIATED WITH THE USE OF THIS PRODUCT. BISSELL'S LIABILITY WILL NOT EXCEED THE PURCHASE PRICE OF THE PRODUCT.

*EXCEPTIONS AND EXCLUSIONS FROM THE TERMS OF THE LIMITED WARRANTY

THIS WARRANTY IS EXCLUSIVE AND IN LIEU OF ANY OTHER WARRANTIES EITHER ORAL OR WRITTEN. ANY IMPLIED WARRANTIES WHICH MAY ARISE BY OPERATION OF LAW, INCLUDING THE IMPLIED WARRANTIES OF MERCHANTABILITY AND FITNESS FOR A PARTICULAR PURPOSE, ARE LIMITED TO THE ONE YEAR DURATION FROM THE DATE OF PURCHASE AS DESCRIBED ABOVE.

NOTE: Please keep your original sales receipt. It provides proof of date of purchase in the event of a warranty claim.

Service

If your BISSELL product should require service:

Contact BISSELL Consumer Care to locate a BISSELL Authorized Service Center in your area. If you need information about repairs or replacement parts, or if you have questions about your warranty, contact BISSELL Consumer Care.

Website:

www.BISSELL.ca/service-centers

E-mail:

www.BISSELL.ca/email-us

Call:

BISSELL Consumer Care
1-800-263-2535
Monday - Friday 8am - 10pm ET
Saturday 9am - 8pm ET
Sunday 10am - 7pm ET

Please do not return this product to the store.

Other maintenance or service not included in the manual should be performed by an authorized service representative.

For any questions or concerns, BISSELL is happy to be of service.

Contact us directly at 1-800-263-2535.

Register your product today!

Registering is quick, easy and offers you benefits over the lifetime of your product.

You'll receive:

Faster Service

Supplying your information now saves you time should you need to contact us with questions regarding your product.

Product Support Reminders and Alerts

We'll contact you with any important product maintenance reminders and alerts.

Special Promotions

Optional: Register your email to receive notice of offers, contests, cleaning tips and more!

Visit **www.BISSELL.ca/registration!**

Visit us online at: BISSELL.ca

When contacting BISSELL, have model number of cleaner available.

Please record your

Model Number: _____

Please record your

Purchase Date: _____

NOTE: Please keep your original sales receipt. It provides proof of purchase date in the event of a warranty claim. See Warranty on page 15 for details.

*We can't wait
to hear from you!*

We really do read
your comments, tweets,
and posts.

**Rate this product on
BISSELL.ca**

or any of our retailer sites
and let us (and millions of
your closest friends)
know what you think!

Parts & Supplies

For Parts and Supplies, go to BISSELL.ca and
enter your model number in the search field.

For cleaning tips and more visit www.BISSELL.ca or find us at:



BISSELL



BISSELLClean



BISSELLClean



BISSELL

YouTube

BISSELL



©2017 BISSELL Homecare, Inc.
BISSELL Canada Corporation
Mississauga, Ontario L5N 0B3
All rights reserved. Printed in China
Part Number 161-2475 05/17
Visit our website at: www.BISSELL.ca