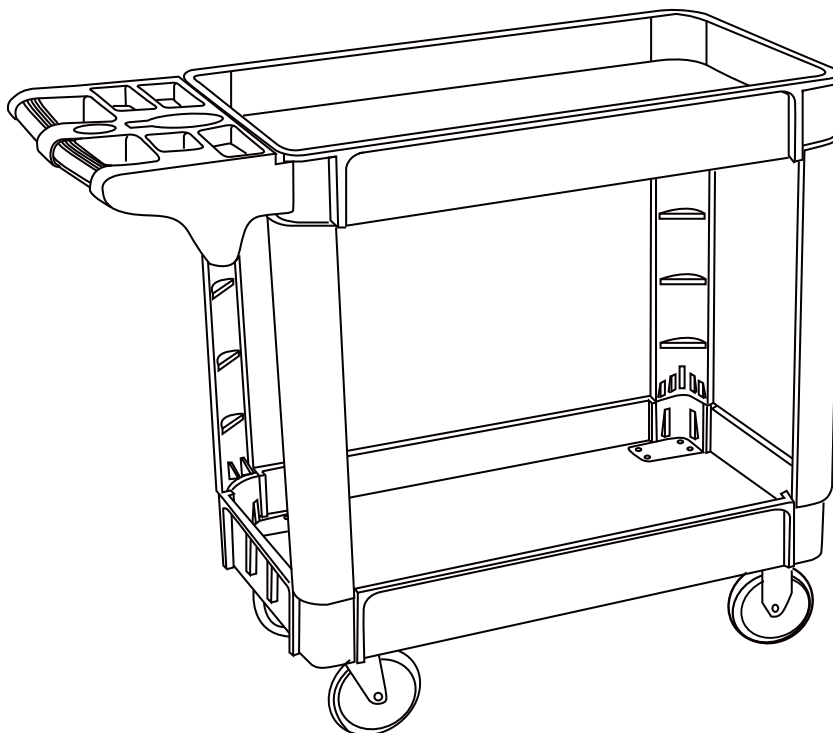


model no. 009-0052-8



POLYPROPYLENE SERVICE CART



IMPORTANT :

Please read this manual carefully before using this Polypropylene Service Cart and save it for reference.

INSTRUCTION MANUAL

model no. 009-0052-8 | contact us 1 888 942-6686



IF ANY PARTS ARE MISSING OR DAMAGED, OR IF YOU HAVE ANY QUESTIONS, PLEASE CALL OUR TOLL-FREE HELPLINE AT 1 888 942-6686.



Read and understand this instruction manual thoroughly before using the product. It contains important information for your safety as well as operating and maintenance advice.

Keep this instruction manual for future use. Should this product be passed on to a third party, this instruction manual must be included.

This MotoMaster® product carries a one (1) year warranty against defects in workmanship and materials. At its discretion, MotoMaster Canada agrees to have any defective part(s) repaired or replaced free of charge, within the stated warranty period, when returned by the original purchaser with proof of purchase. This product is not guaranteed against wear or breakage due to misuse and/or abuse.

TABLE OF CONTENTS

Safety Information	4
Introduction	4
Safety Information	4
Personal Safety Instructions	5
Technical Specifications	5
Assembly	6
Maintenance	7
Parts List and Diagram	8

INTRODUCTION

The MotoMaster® Polypropylene Service Cart features large upper and lower trays to get items from point A to point B in your shop, warehouse or office with ease! This service cart is made of a lightweight, industrial-strength polypropylene that won't rust or chip. This manual will explain how to install and use the cart safely and effectively. Please read and follow these instructions and precautions carefully.

SAFETY INFORMATION

- Keep work area clean. Cluttered areas invite injuries.
- Observe work area conditions. Keep work area well lighted.
- Store idle equipment. When not in use, the Service Cart must be stored in a safe and clean location. Always lock up products and keep out of reach of children.
- Use the right product for the job. There are certain applications for which the Service Cart was designed. Do not modify the Service Cart and do not use the Service Cart for a purpose for which it was not intended.
- Check for damaged parts. Before using any product, any part that appears damaged should be carefully checked to determine that it will operate properly and perform its intended function. Check for any broken or damaged parts and any other conditions that may affect its

operation. Replace or repair damaged or worn parts immediately.

- Replacement parts and accessories: when servicing, use only identical replacement parts. Use of any other parts will void the warranty.
- Do not operate product if under the influence of alcohol or drugs. Read warning labels on prescriptions to determine if your judgment or reflexes are impaired while taking drugs. If there is any doubt, do not operate the product.
- Use eye protection. Wear ANSI approved impact safety goggles when assembling.
- Do not exceed the product's maximum load capacity of 500 lb (226.8 kg).
- Only use on a flat surface capable of supporting the Service Cart and its maximum capacity load of 500 lb (226.8 kg). It is easy to lose control of the Service Cart if attempting to pull a load on a sloping or uneven surface.
- Do not allow children to play on, stand upon or climb on the Service Cart. The Service Cart is not for carrying people or animals.
- Always check hardware and assembled parts after assembling. All connections should be tight and hardware tightened.
- Always distribute objects in the Service Cart evenly. Uneven weight distribution could cause tipping. Do not lean or climb on the Service Cart.

PERSONAL SAFETY INSTRUCTIONS

- It is the owner and/or operator's responsibility to read and understand all WARNINGS and operating instructions contained on the product labels and instruction manual prior to operation of this product.
- It is also the owner and/or operator's responsibility to periodically inspect and maintain this product and labels in good working order.

TECHNICAL SPECIFICATIONS

Model	009-0052-8
Maximum Capacity :	500 lb (226.8 kg) evenly distributed
Tray Size :	30 x 16 x 2 3/4" (76 x 41 x 7 cm)
Casters :	2 fixed and 2 swivel 5 x 1" (13 x 2.5 cm) non-marring



DANGER!
Potential hazard that will result in serious injury or loss of life.



WARNING!
Potential hazard that could result in serious injury or loss of life.



CAUTION!
Potential hazard that may result in moderate injury or damage to equipment.

ASSEMBLY

- Place the bases of the four legs (5, 6) into the corners of the lower tray (2). The flange on each leg will only fit into certain corners.
- Insert carriage bolts (10) down through the holes in the bases of the legs (5, 6).
- Attach casters (8, 9) to carriage bolts (10) using split washers (11) and nuts (12). For best operation, the two straight casters (9) go on the same end of the cart, and the two swivel casters (8) go on the other end (handle side).
- Place the upper tray (1) upside down on the work surface. Turn the handle (3)

upside down with the cup holder toward the tray and the hand holes on the outside, and attach the handle to the tray. Turn the tray and handle right-side-up.

- Place the tray with the handle firmly on top of the legs (5, 6), right side up. Position the handle above either the swivel or fixed casters, depending on operating preference.
- Use three screws (7) through each leg (5, 6) from underneath to secure them.

NOW YOUR SERVICE CART IS READY FOR USE.

MAINTENANCE

- **BEFORE EACH USE**, inspect the general condition of the Service Cart. Check for:
A : loose hardware.
B : misalignment or binding of parts, cracked, bent, or broken parts, and any other condition that may affect its safe operation.
- Clean the Service Cart after each use. Make sure dirt, oil, grease, and debris are not on the Service Cart.

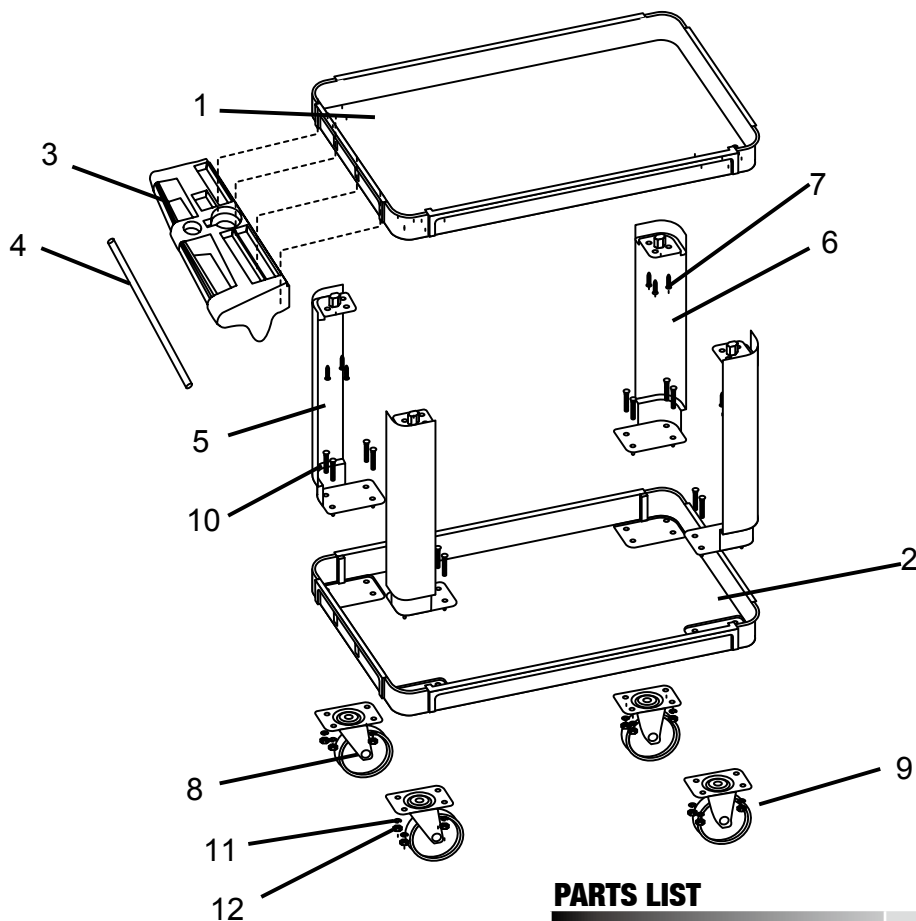
**WARNING!**

DOT NOT exceed 500 lb (226.8 kg) capacity evenly distributed.

NOTE :

Use a rubber mallet to ensure snug connection of all nonmetal parts.

model no. 009-0052-8 | contact us 1 888 942-6686



PARTS LIST

No.	DESCRIPTION	Qty
1	Upper tray	1
2	Lower tray	1
3	Handle	1
4	Rod	1
5	Leg L	2
6	Leg R	2
7	Screw	12
8	Swivel caster	2
9	Fixed caster	2
10	Bolt	16
11	Washer	16
12	Nut	16

MADE IN CHINA

IMPORTED BY
MOTOMASTER CANADA
TORONTO, CANADA M4S 2B8