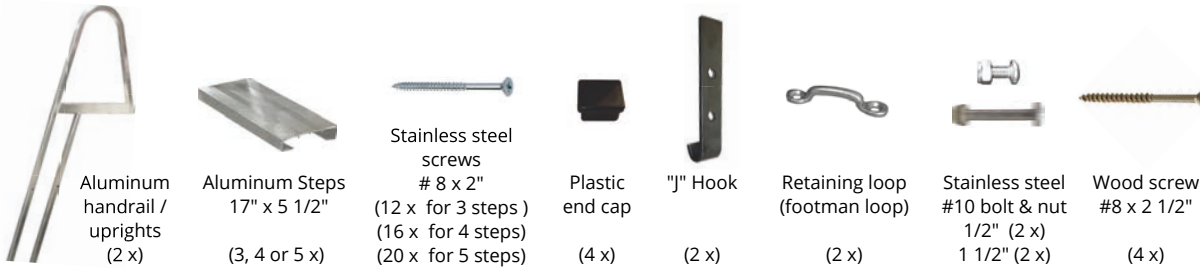




ANGLED ALUMINUM LADDER ASSEMBLY AND INSTALLATION GUIDE

(for ladder models : 15520-15521-15522)

BOX CONTENT

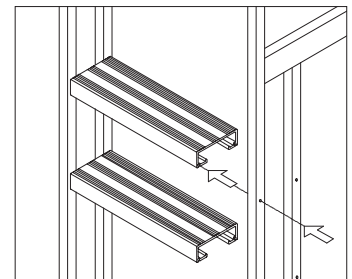


REQUIRED TOOLS

- > 3/8" wrench
- > Screwdrivers
 - Phillips-headed #2
 - Square #2
- > Cordless drill for reinforcement wood pieces
- > Glove

1 STEP ASSEMBLY

Install the steps with the #8 x 2" screws starting with the top step and tighten very lightly. When installing the steps, you must start with the TOP one. However, if the alignment is not exact, GENTLY align the ladder upright with the screw and lightly tighten. You must install all steps and then finish tightening. DO NOT OVERTIGHTEN. Add the 4 plastic end caps in the uprights.



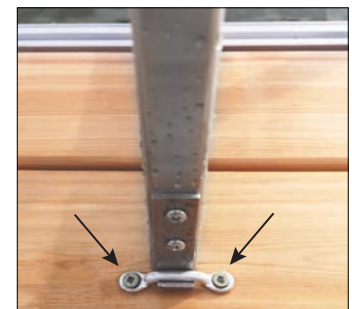
2 "J" HOOKS

Install the "J" hooks on the ladder with the two 1 1/2" bolts in the handrail top holes. Then screw on the 1/2" bolts by inserting the nuts inside the tube with a 3/8" wrench. It's recommended to wear a glove as the inside of the square tube might have sharp edges around the holes.



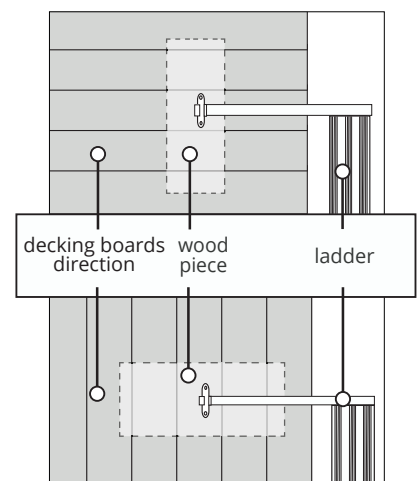
3 RETAINING LOOPS

Position the ladder on the dock, place the footman loops in the "J" hooks and screw them partially into the decking (with an angle for a better grip in the wood) using the 2 1/2" wood screws. Remove the ladder to proceed with the next step.



4 REINFORCEMENT WOOD PIECES

It's recommended to screw two 1 1/2" thick wood pieces under the decking to ensure a solid grip on the footman loop screws and to spread the load over several boards. If you cannot access the underside of the dock, you can carefully remove a few planks from the decking to install these reinforcements.



This ladder has a 250 lbs capacity.

Should you encounter any difficulties with this product, do not return it to the store. Please contact our Customer Service.

Suggested complementary product



Install this ladder at different locations on your dock according to your activities by getting additional footman loops.



Product #32382 (1 pair)



The Best Customer Service Team is there for you !

1-800-585-1237

Live Chat Online | MULTINAUTIC.COM

ASSEMBLE - ENJOY - SHARE !

