

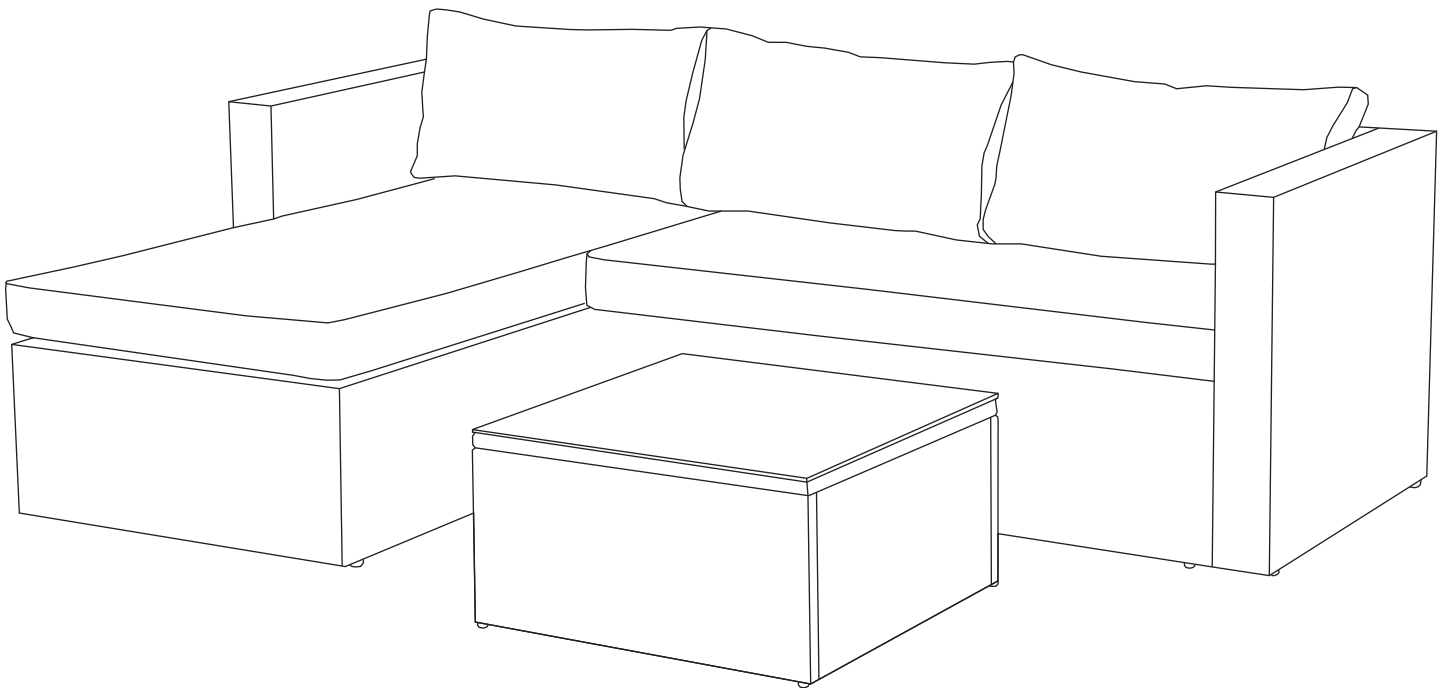


# Sectional Set

---

Model No. 499-4099-6

## Assembly Instructions



**NEED HELP? GIVE US A CALL!**  
**WE'RE HERE FOR YOU.**

**TOLL-FREE:**  
**1-877-483-6759**

**IMPORTANT:** Please read this manual carefully  
before beginning assembly of this product.  
Keep this manual for future reference.

Production number: XXXXXX



From your first apartment to  
downsizing your family home,  
For LIVING® is a great place to start.

Uncomplicate your life with timeless  
style and reliable quality that delivers  
everyday solutions for your home.

Let us know how our products  
work for you. Rate and review at  
[canadiantire.ca](http://canadiantire.ca).

# Table of Contents

Important Safety Instructions	3	Technical Data	24
Parts List	4	Troubleshooting	25
Before You Begin Assembly	6	Caring for Your Item	26
Step-by-step Guide	7	Warranty	27

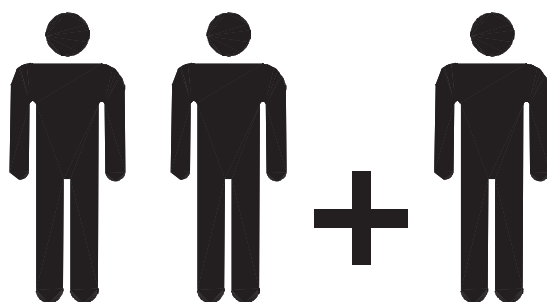


## Warning!

Please use your furniture correctly and safely. Improper use can cause safety hazards, or damage to your furniture or household items. Carefully read the following safety information.

- Please read and understand this entire manual before attempting to assemble, operate, or install the product.
- Any assembly or maintenance of the product must be carried out by adults only. Some parts may contain sharp edges. Wear protective gloves if necessary.
- To prevent damage, place all parts on a level surface during assembly. Add a layer of protective surface if needed.
- Due to the nature of steel, surface oxidation (rusting) will occur if this protective coating is scratched. This is a natural process. To minimize this condition, it is recommended that care be taken when assembling and handling the product in order to prevent the paint from being scratched.

## Needed for Assembly:



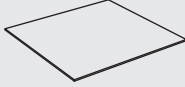
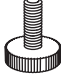

2-3 People

# Parts List



Item	Description	Thumbnail	Quantity
A P00140042102	Arm 2		1
B P00150018502	Loveseat Back		1
C P00160032102	Loveseat Seat Board		1
A0 P00140042202	Arm 1		1
B1 P00150018602	Lounge Back		1
C1 P00160032202	Lounge Seat Board		1
K P00170015002	Back Cushion		3
L P00180024402	Loveseat Cushion		1
L1 P00180024502	Lounge Cushion		1
A1 P00240010301	Coffee table panel 1		2
B2 P00240010401	Coffee table panel 2		2
C2 P00370005001	Top Panel		1

# Parts List

Item	Description	Thumbnail	Quantity
D1 P00210062901	Glass		1
M H990030037	Adjustable Foot (Pre-assembled)		18
N P00220050501	Buckle (Pre-assembled)		20

# Before You Begin Assembly

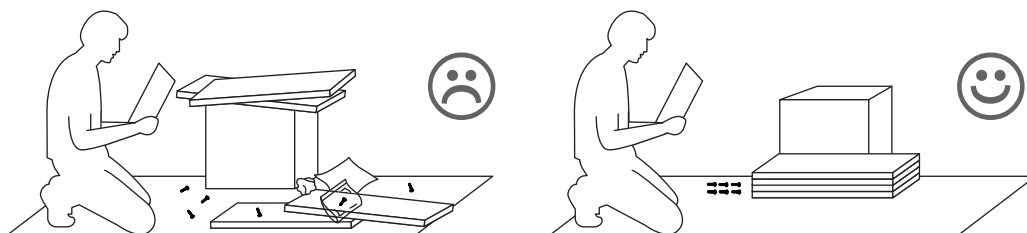
## Make Sure All Parts Are Present

Compare all pieces to the parts and hardware lists, and make sure you have all tools required for assembly.



## Assemble in a Cleared Area

Place all parts from the box on the floor in front of you on a clean, dry, level surface to protect the product as it is being assembled.



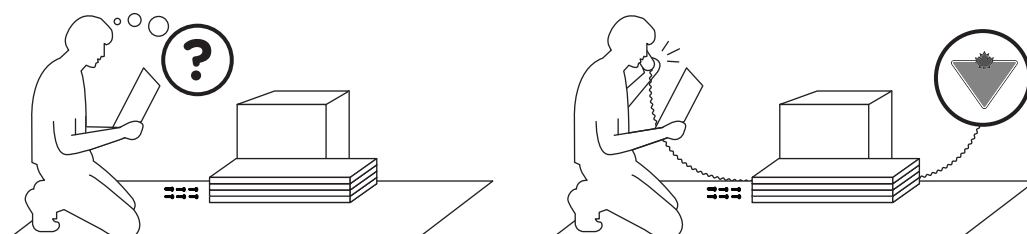
## Remove Packaging Materials

Place packing materials back in the box. Do not dispose of packaging materials until assembly is complete.



## Read Each Step Carefully

Make sure you understand each step. For any questions, contact the For LIVING® customer service centre at 1-877-483-6759 (toll free).

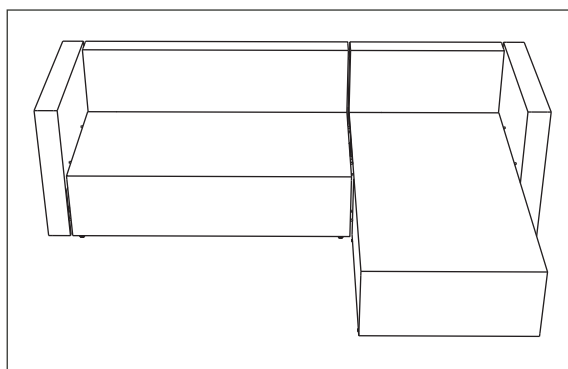


# Step-by-step Guide

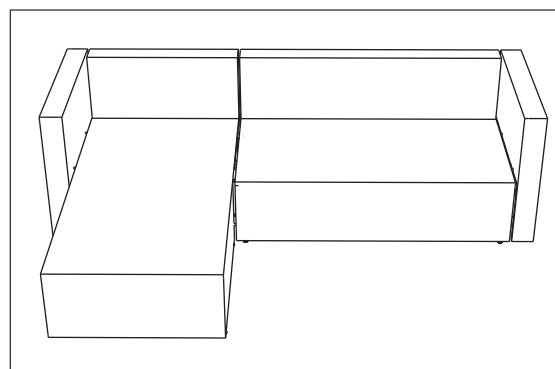


**Note: There are 2 assembly methods for this product.**

LEFT FACING



RIGHT FACING

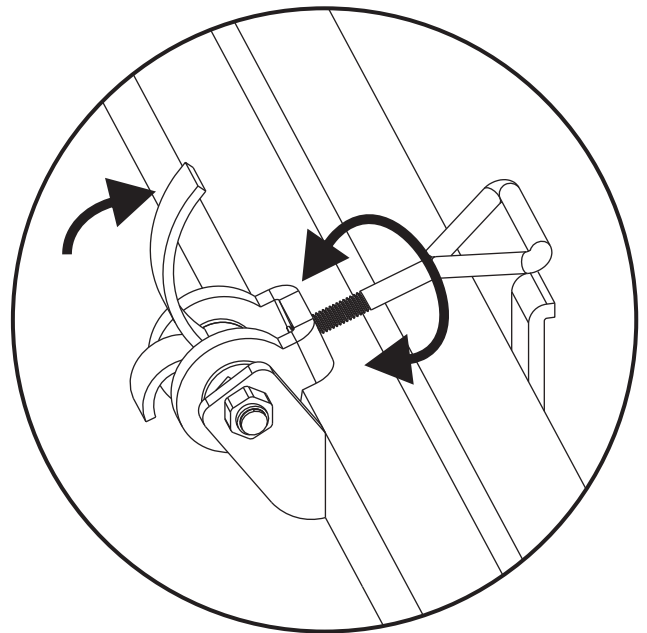
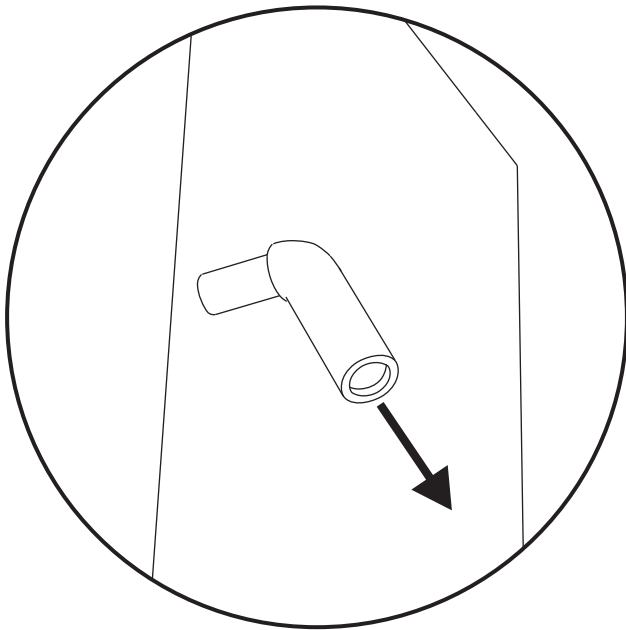


# Step-by-step Guide

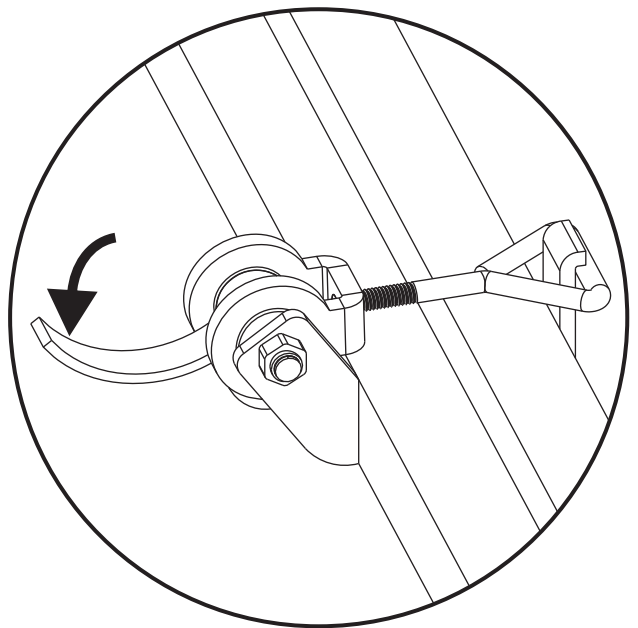
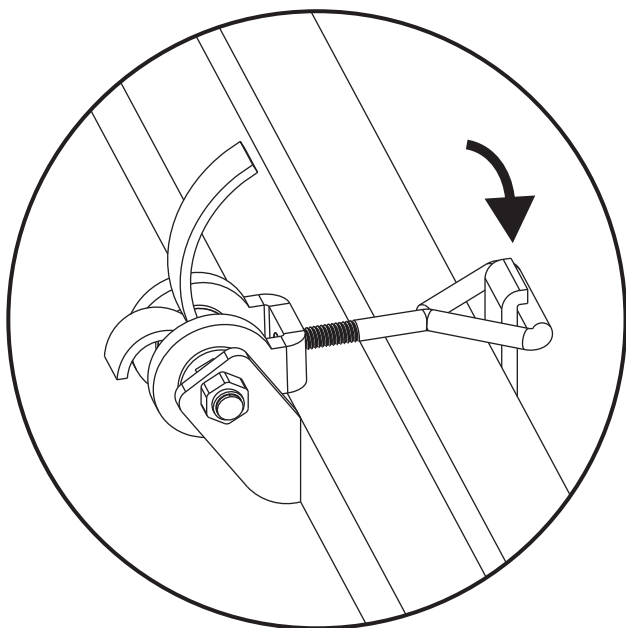
Step 1: Before installation, take off the plastic cap on the latch.

Step 2: Buckle instructions: open the buckles, then rotate the triangle hook to a suitable position that allows the buckle to lock to the hook base tightly.

## Step 1



## Step 2

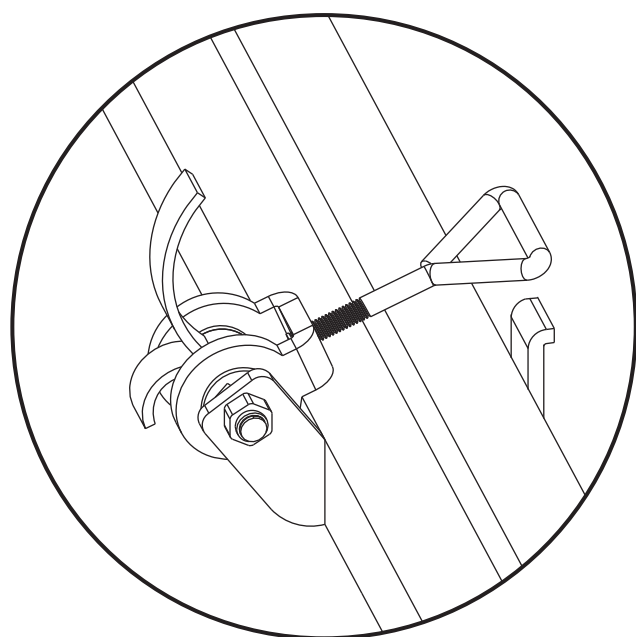
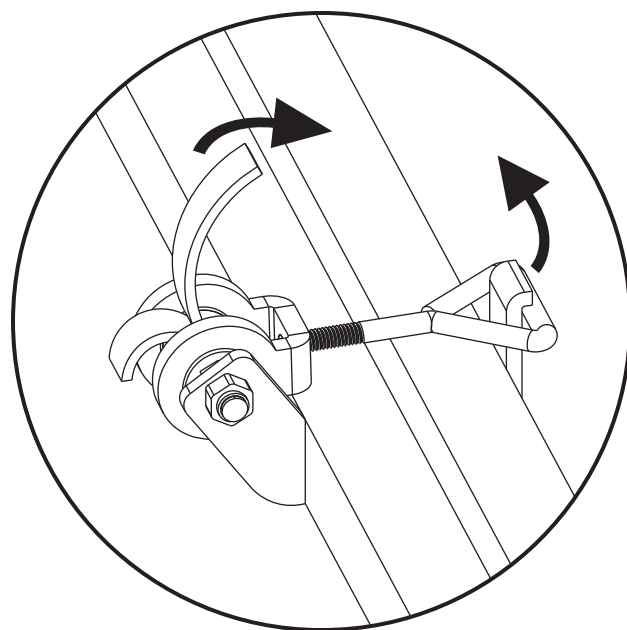
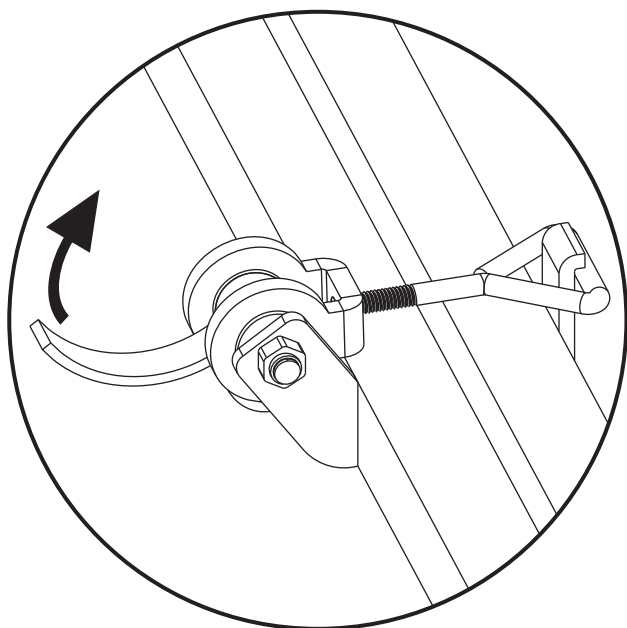




# Step-by-step Guide



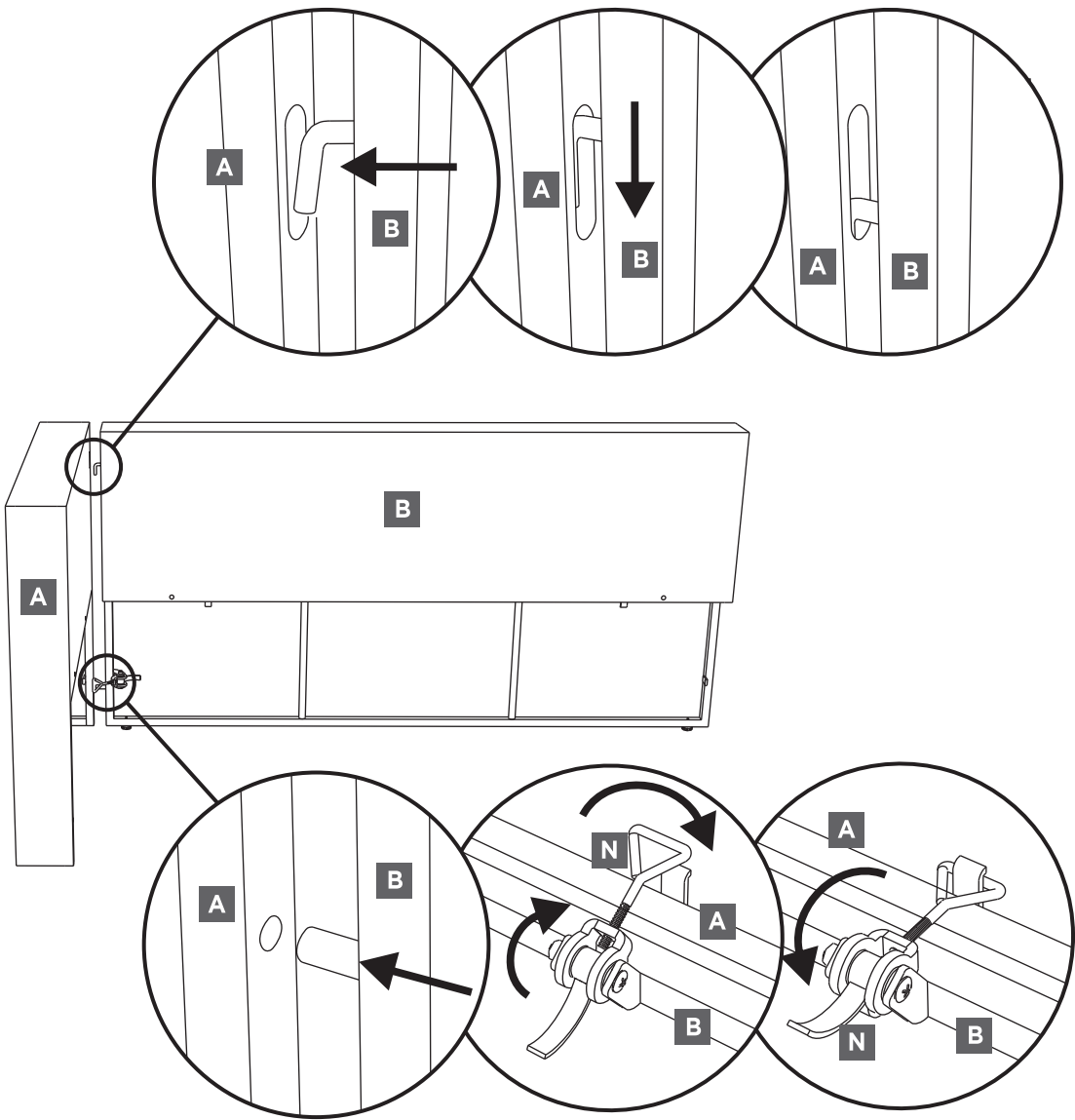
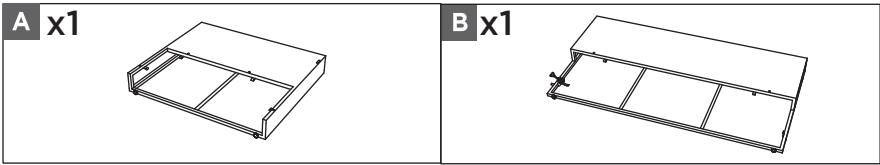
To unlock the buckles: Open the buckles, then open the triangle hook.



# Step-by-step Guide (Left Facing)

## Step 1

Insert latches on loveseat back (B) to arm 2 (A), then lock the buckle tightly.

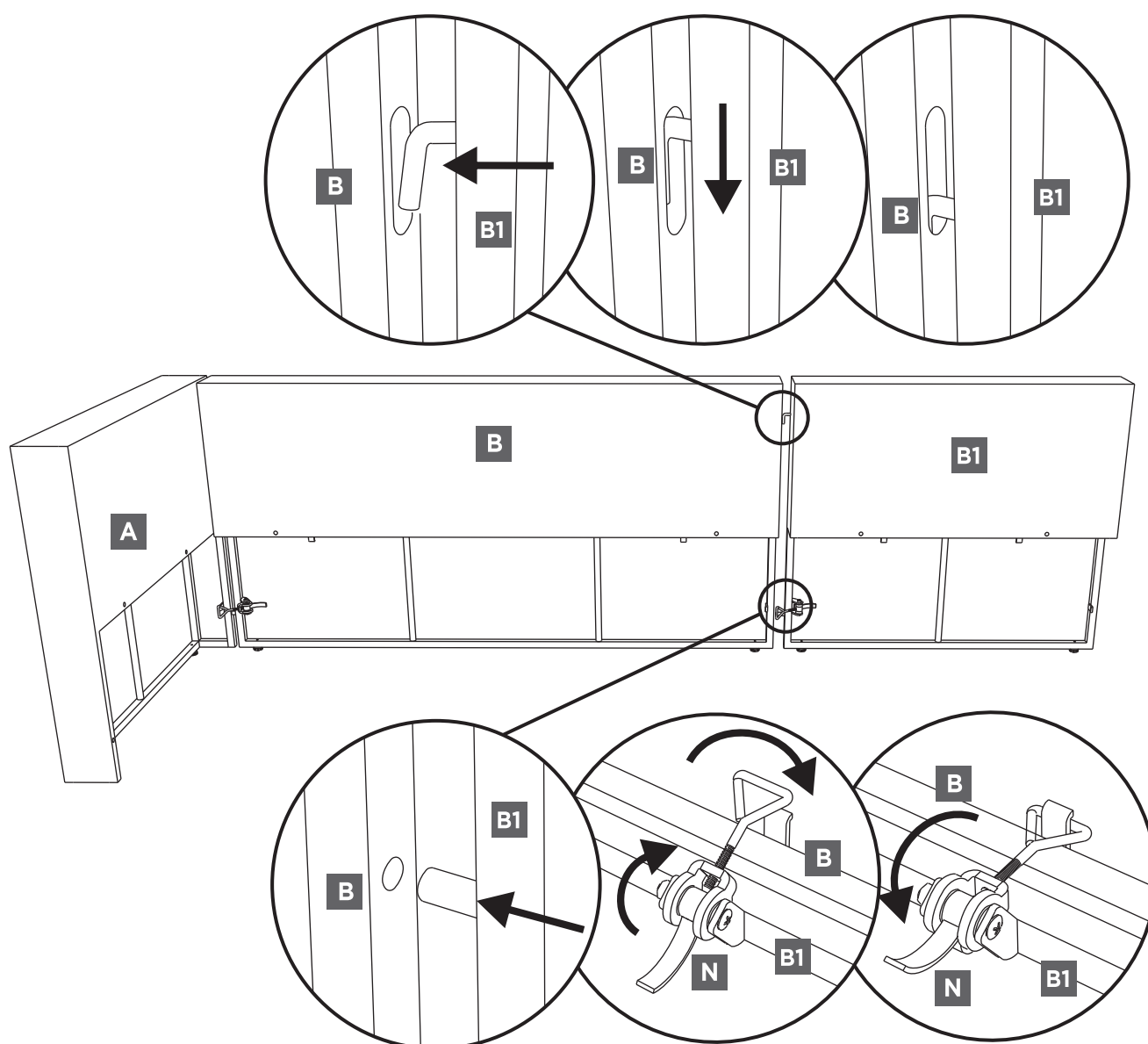
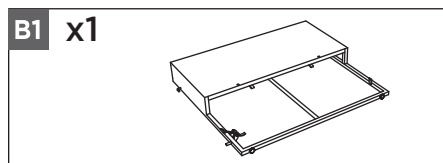


# Step-by-step Guide (Left Facing)



## Step 2

Insert latches on loveseat back (B) to lounge seat board (B1), then lock the buckle tightly.

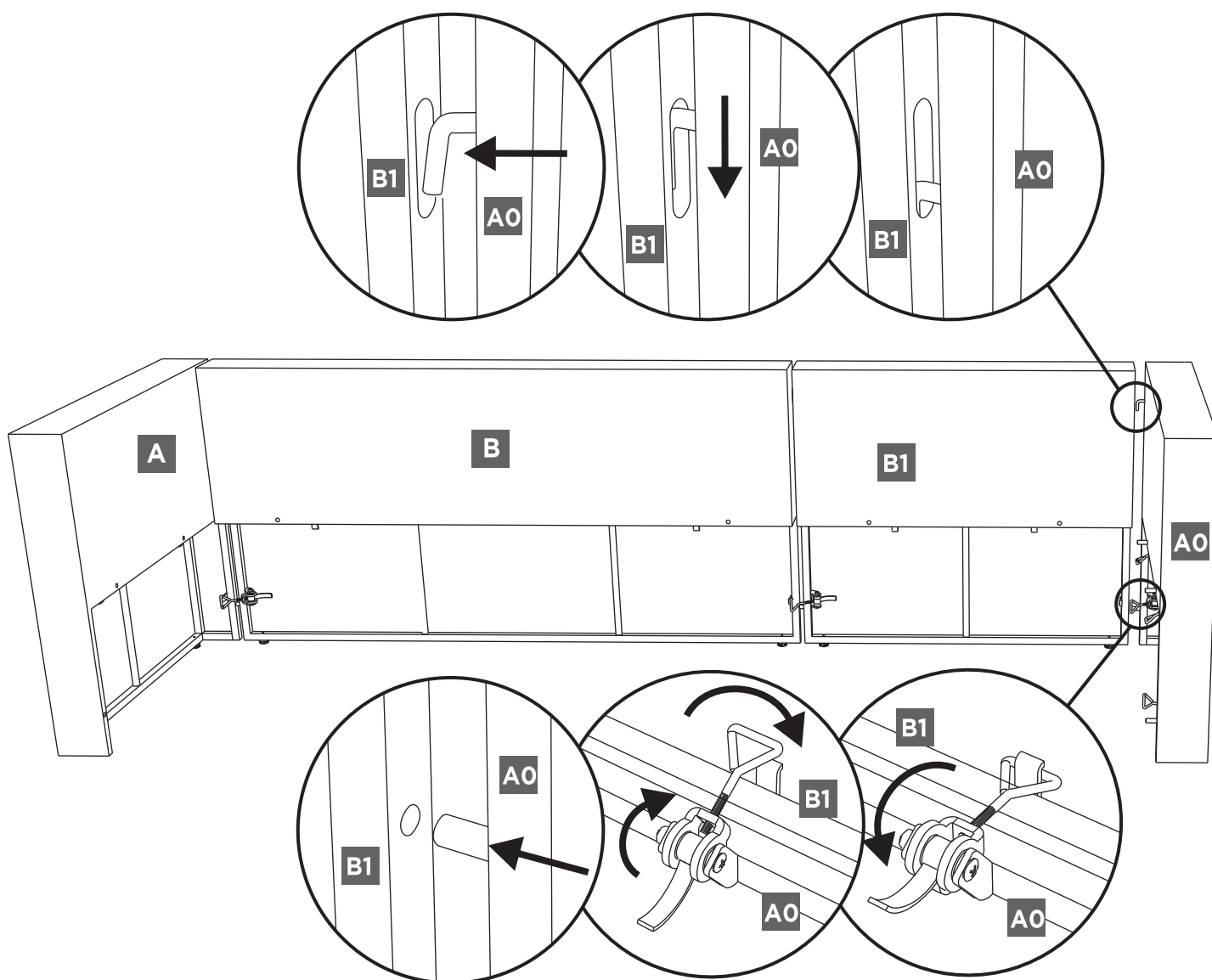
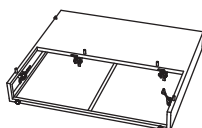


# Step-by-step Guide (Left Facing)

## Step 3

Insert latches on arm (A0) to lounge back (B1), then lock the buckle tightly.

A0 x1

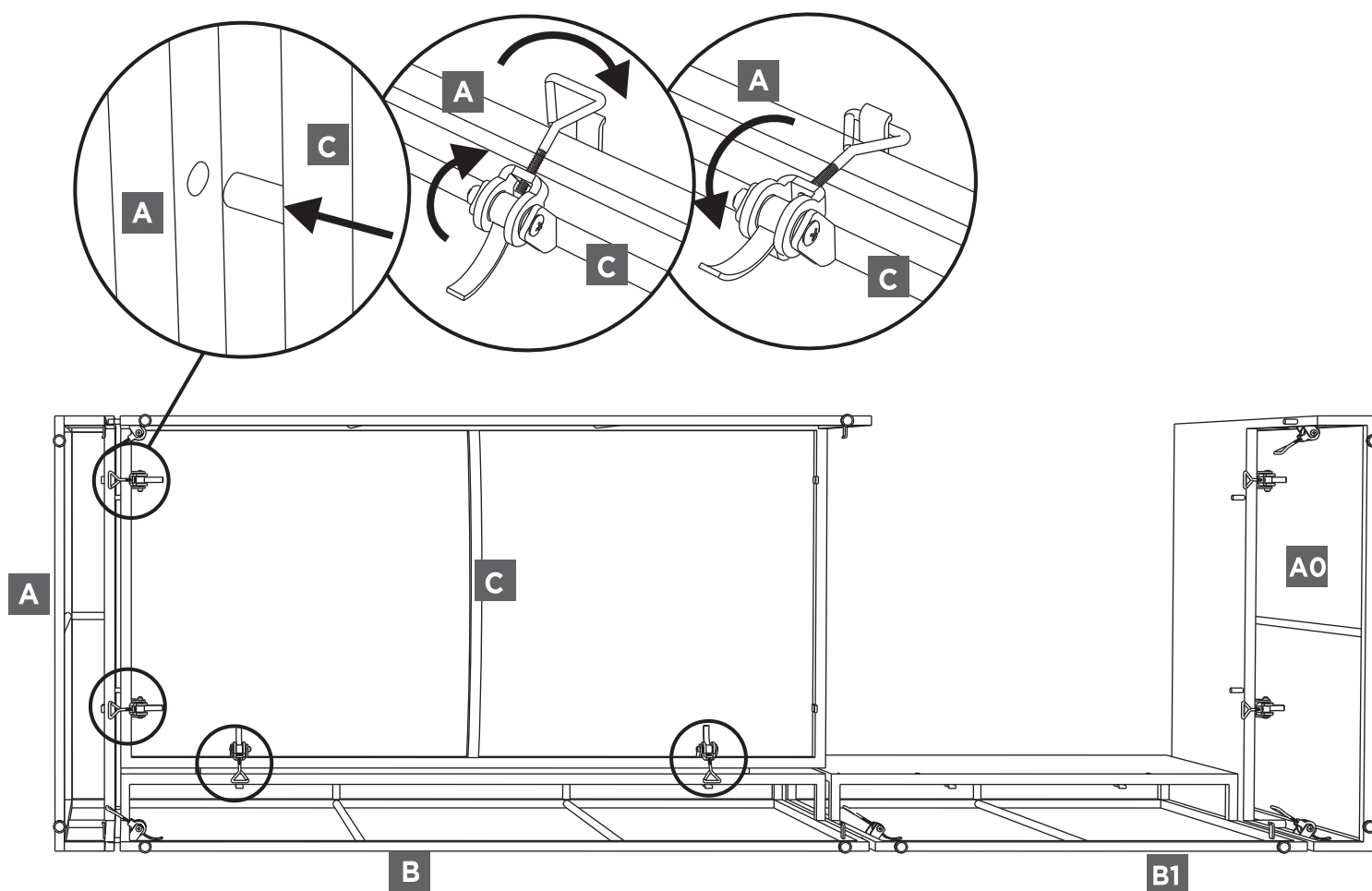
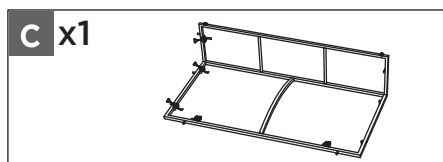


# Step-by-step Guide (Left Facing)



## Step 4

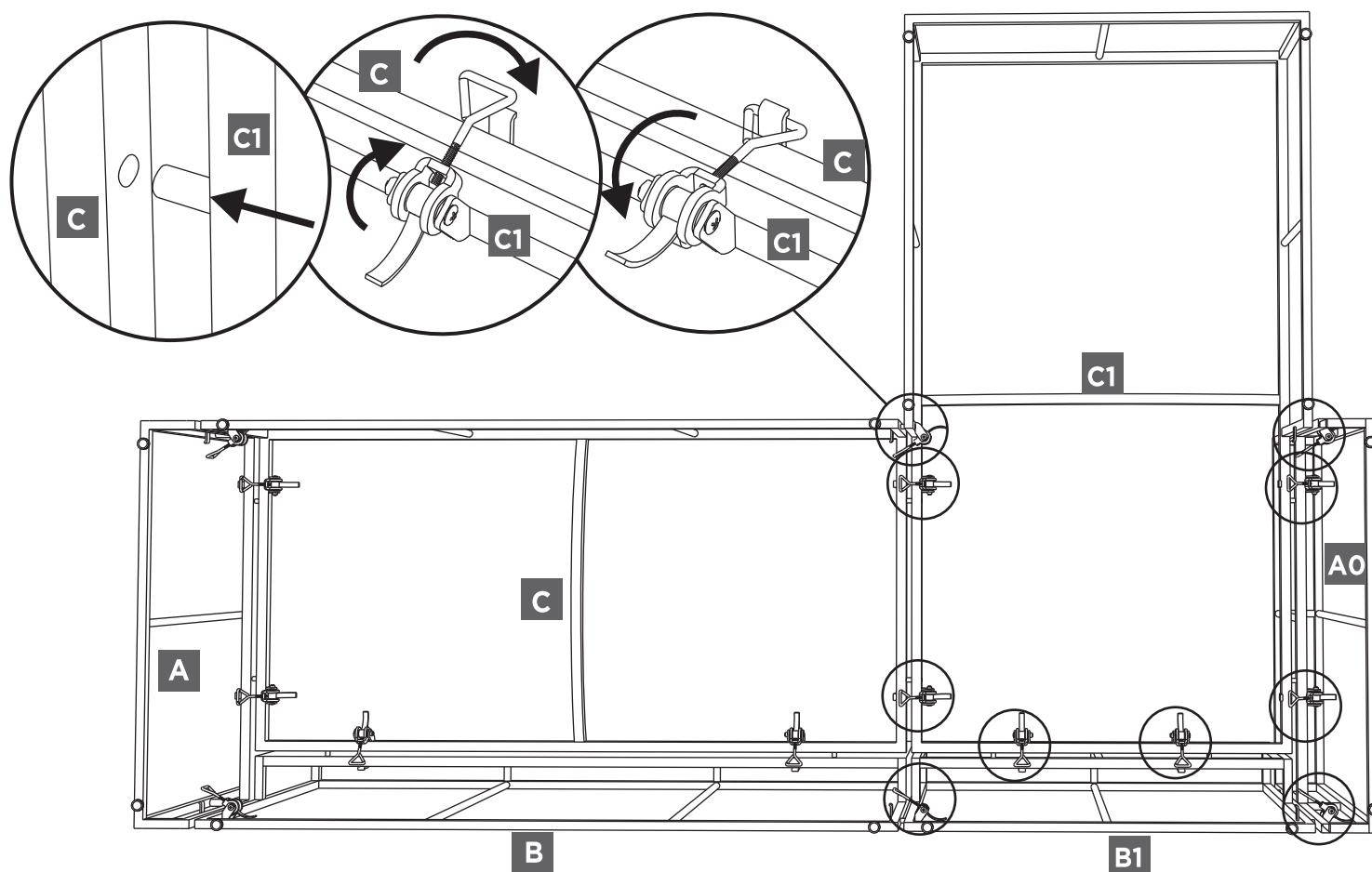
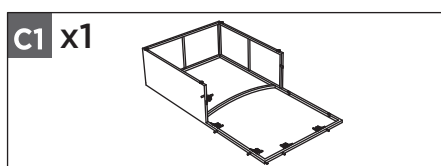
Flip the sofa over, insert the latches on loveseat seat board (C) to arm 2 (A) and loveseat back (B), then lock the buckles tightly.



# Step-by-step Guide (Left Facing)

## Step 5

Insert the latches on lounge seat board (C1) to loveseat seat board (C) and lounge back (B1). Insert latches on arm (A0) to lounge seat board (C1), then lock the buckles tightly. Ensure all of the buckles are attached correctly.

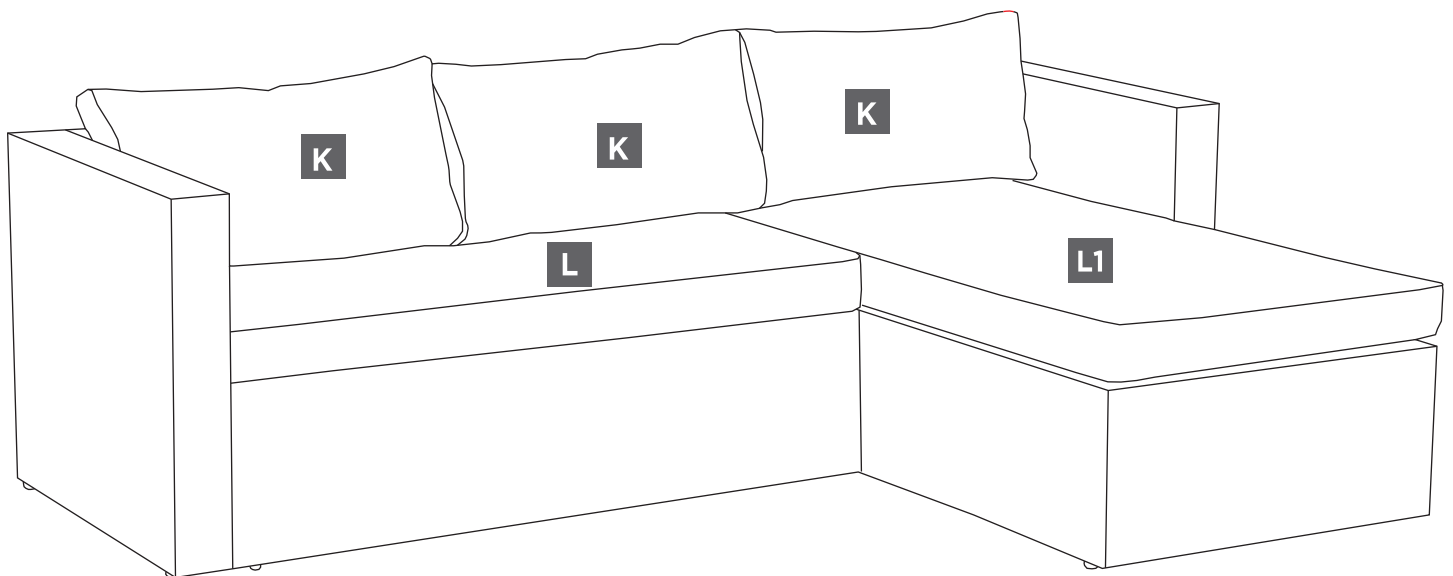
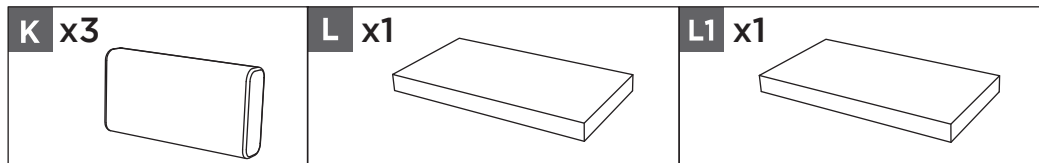


# Step-by-step Guide (Left Facing)



## Step 6

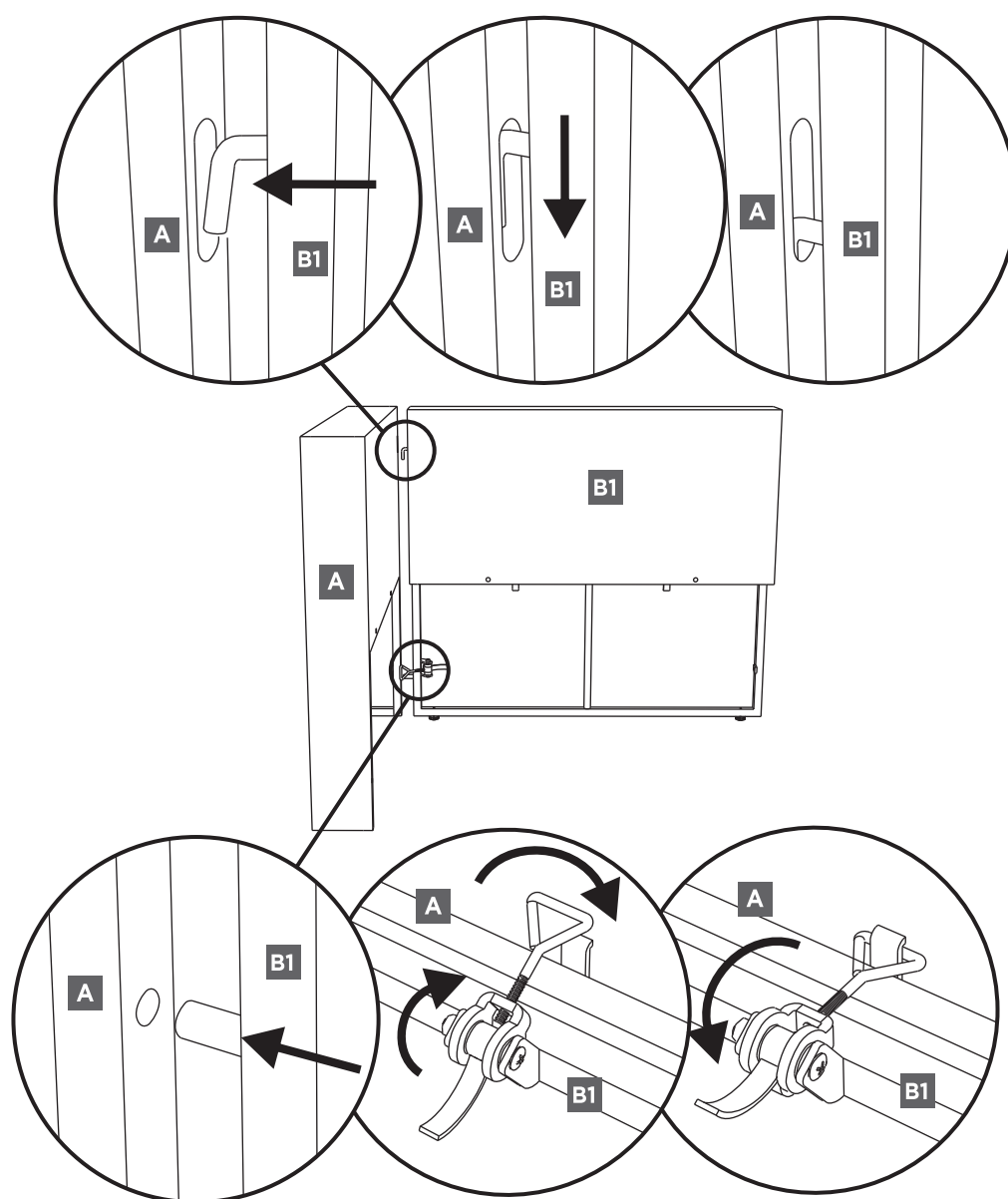
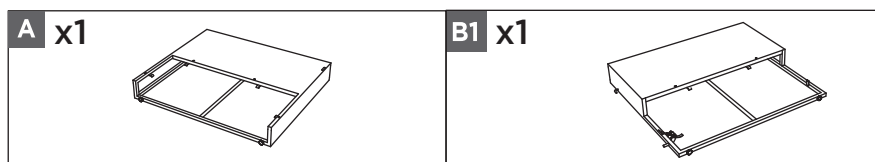
Place the back cushion (K), loveseat cushion (L) and lounge cushion (L1) on the sofa.



# Step-by-step Guide (Right Facing)

## Step 7

Insert latches on lounge back (B1) to arm (A), then lock the buckles tightly.



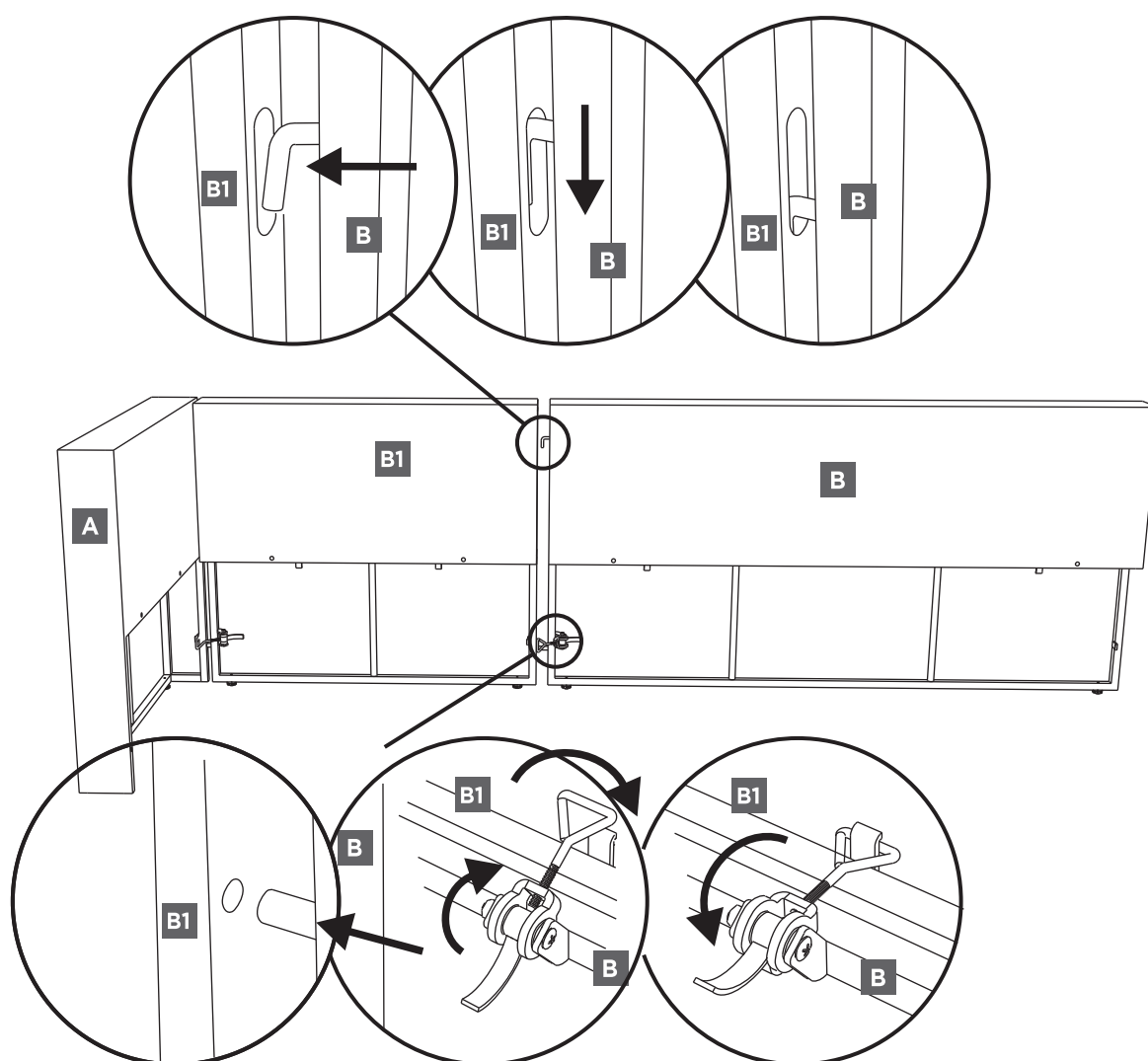
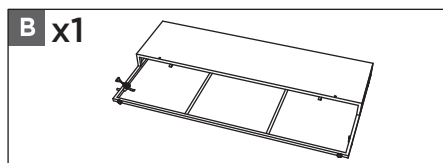


# Step-by-step Guide (Right Facing)



## Step 8

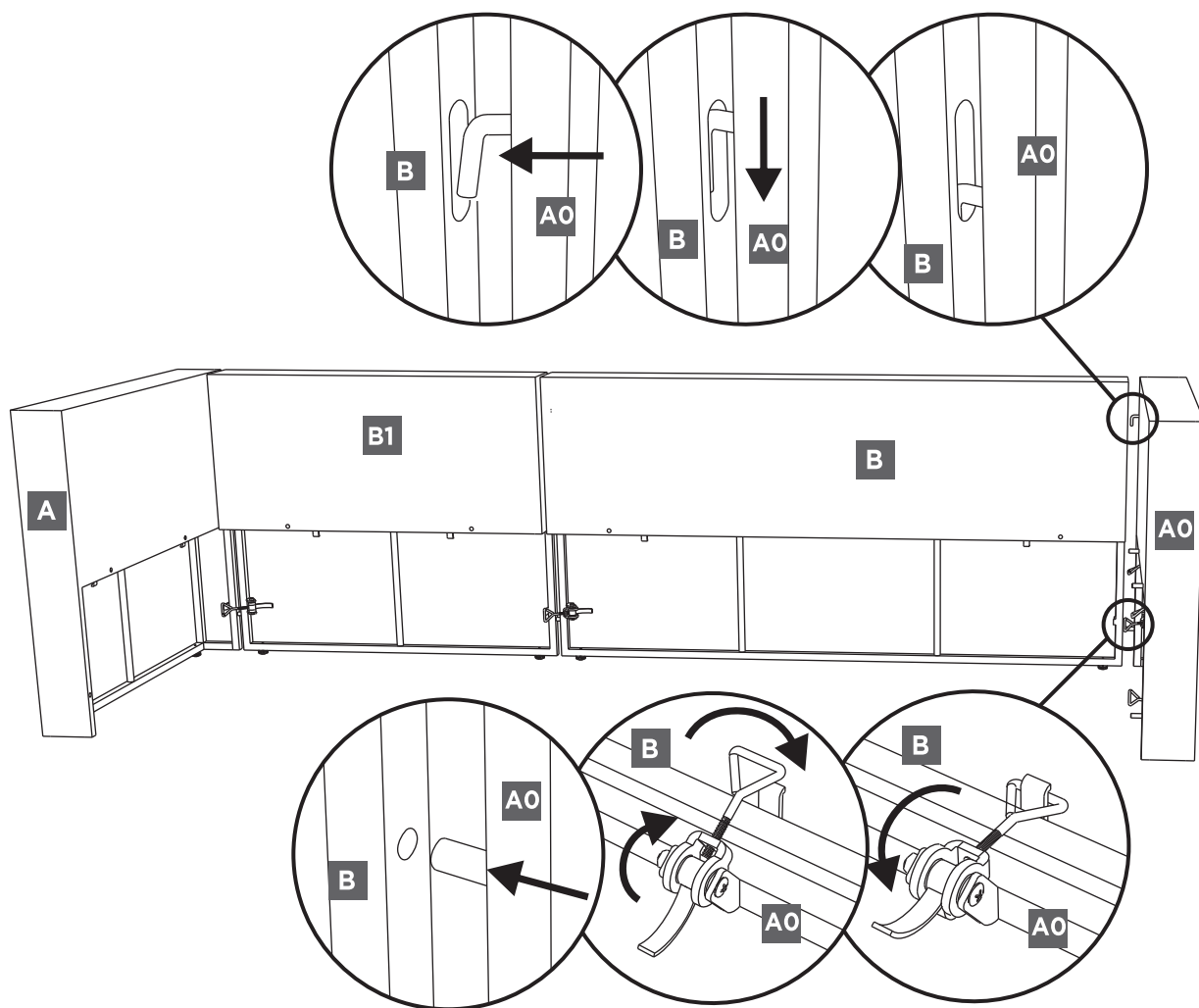
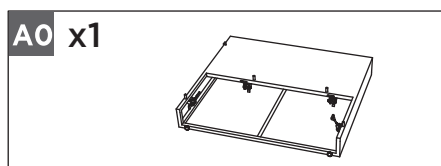
Insert latches on loveseat back (B) to arm (A), then lock the buckles tightly.



# Step-by-step Guide (Right Facing)

## Step 9

Insert latches on arm (A0) to loveseat back (B), then lock the buckles tightly.

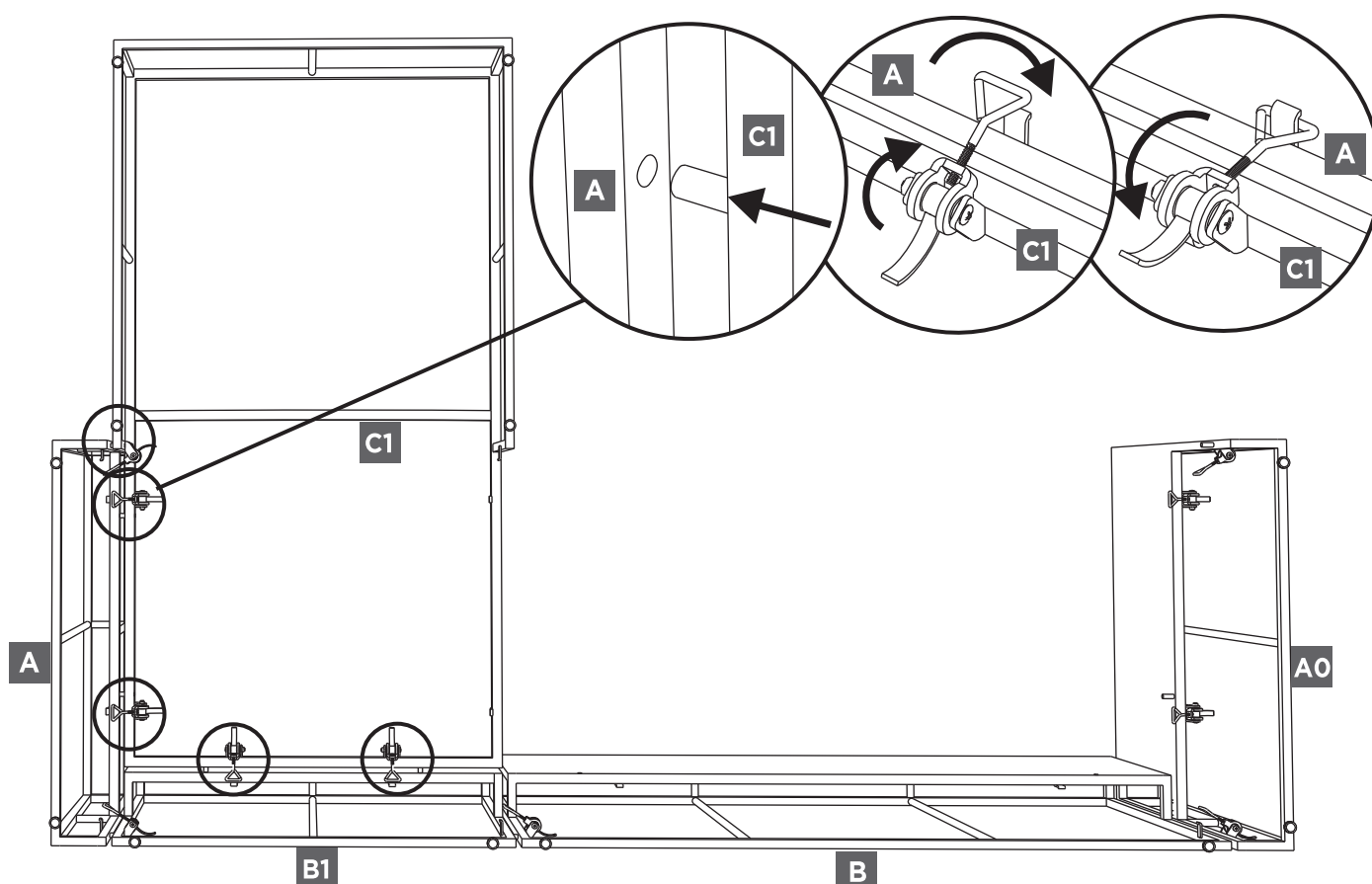
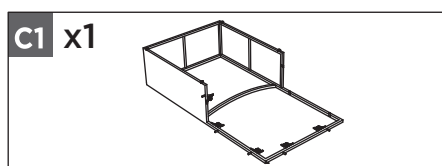


# Step-by-step Guide (Right Facing)



## Step 10

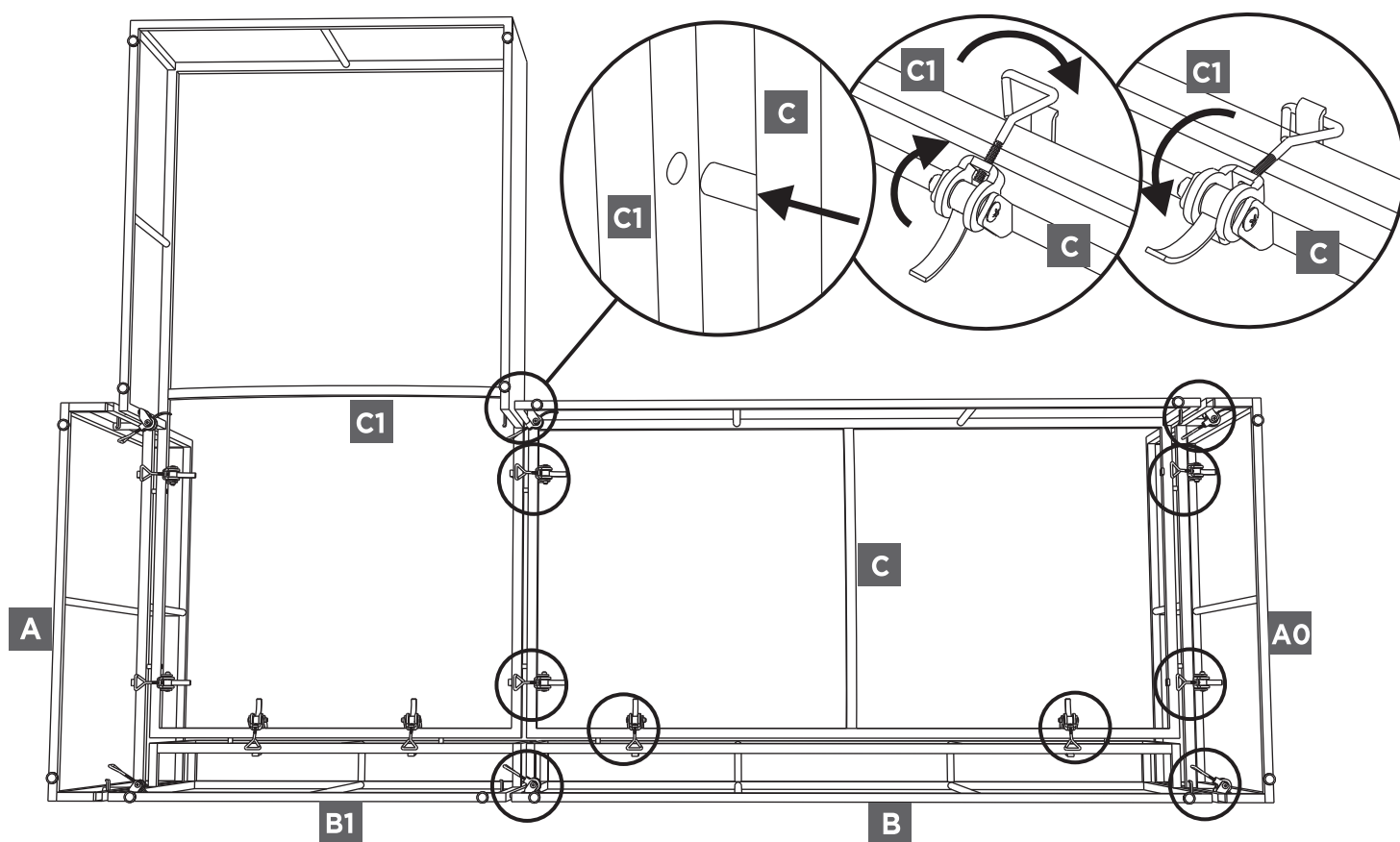
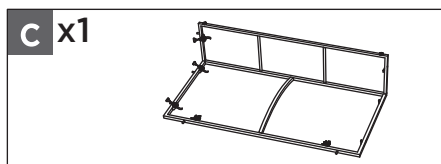
Flip the sofa over, insert the latches on lounge seat board (C1) to arm (A) and lounge back (B1), then lock the buckles tightly.



# Step-by-step Guide (Right Facing)

## Step 11

Insert the latches on loveseat seat board (C) to lounge seat board (C1) and loveseat back (B).  
Insert latches on arm (A0) to loveseat seat board (C), then lock the buckle tightly.

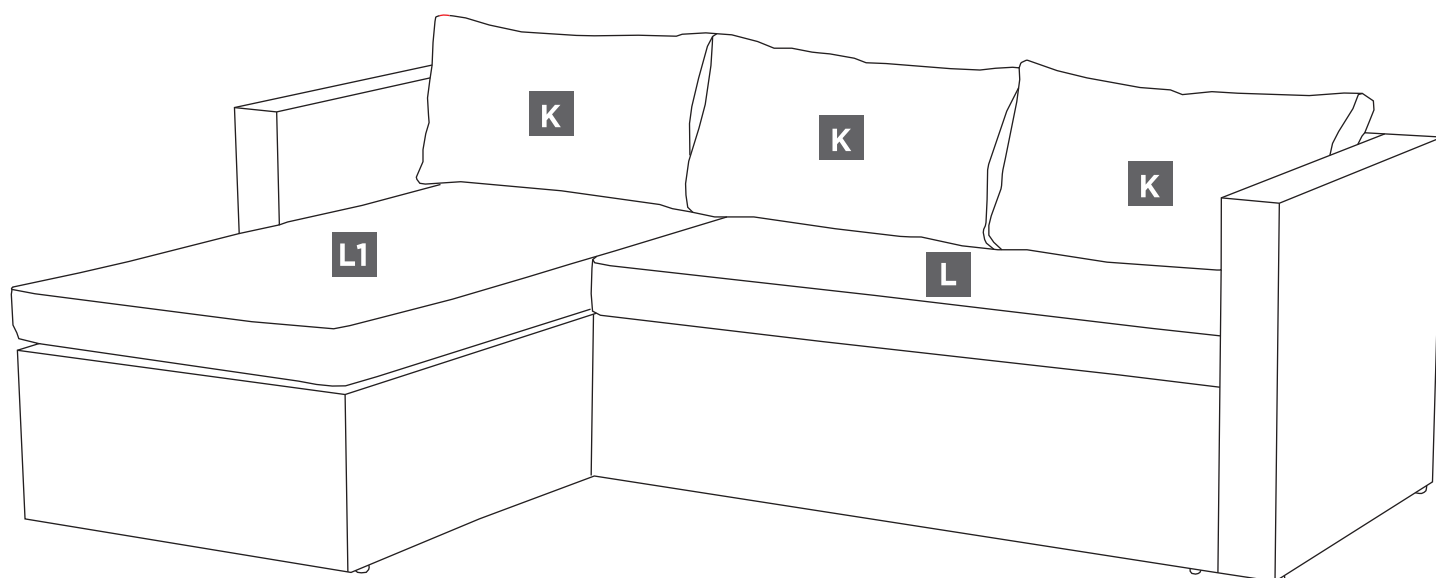
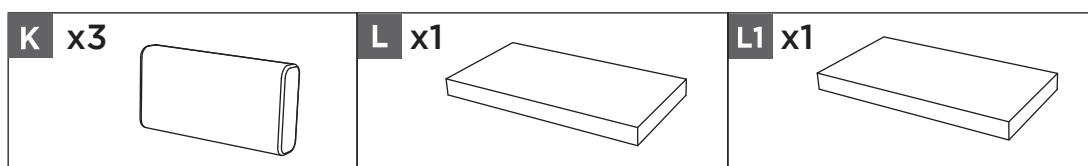


# Step-by-step Guide (Right Facing)



## Step 12

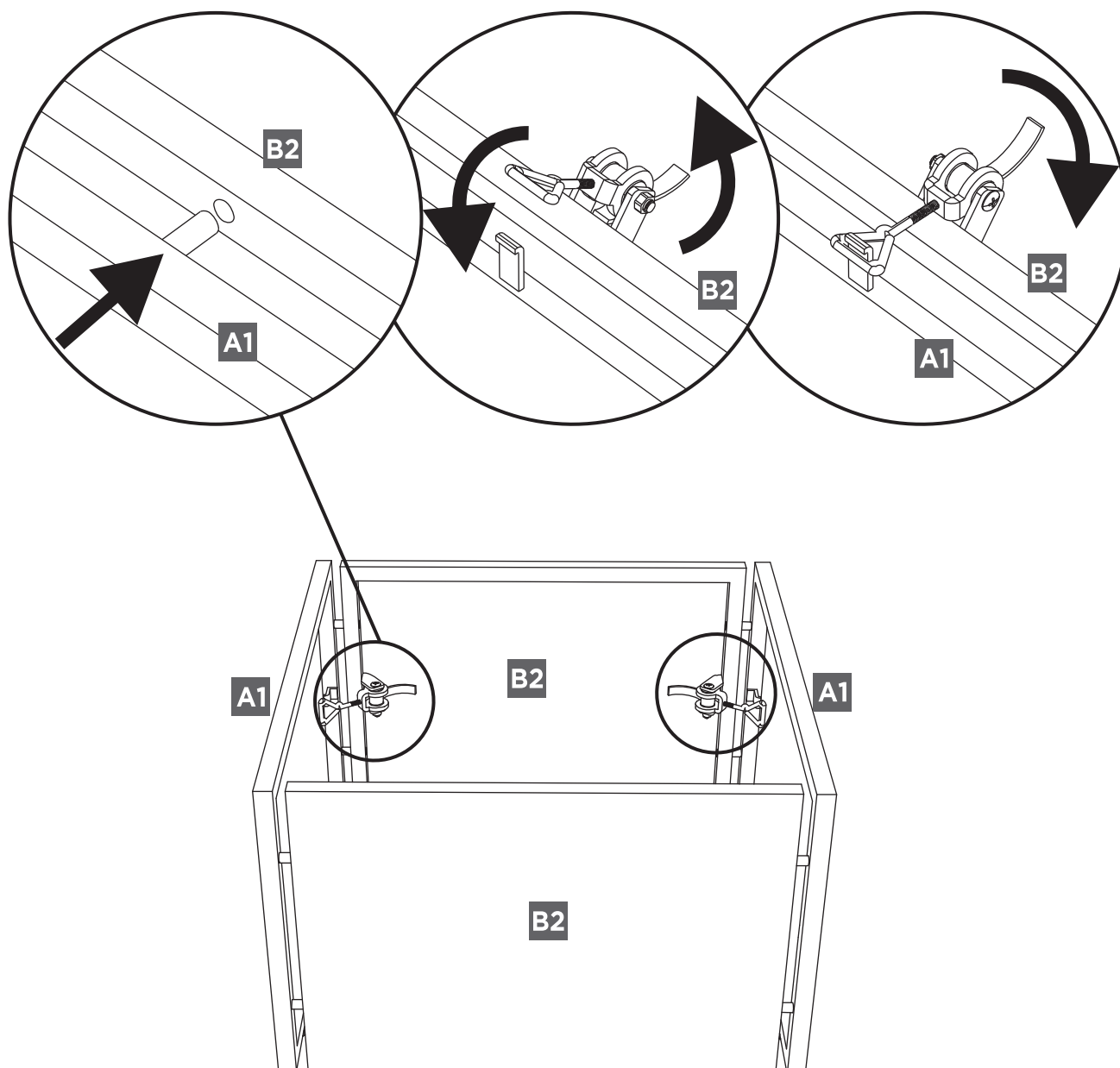
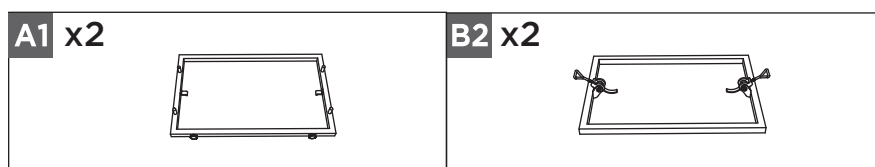
Place the back cushion (K), loveseat cushion (L) and lounge cushion (L1) on the sofa.



# Step-by-step Guide

## Step 13

Insert latches on panel 1 (A1) to panel 2 (B2), then lock the buckles tightly.

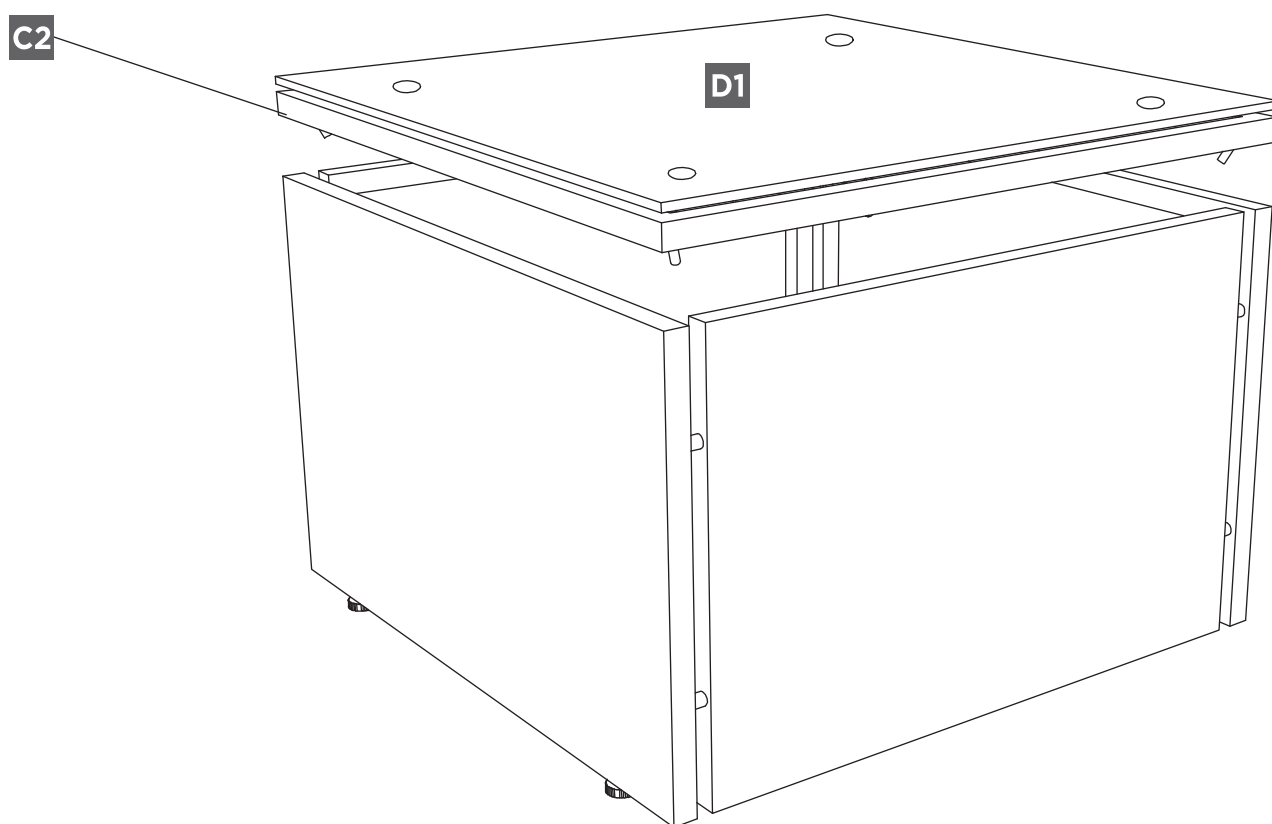
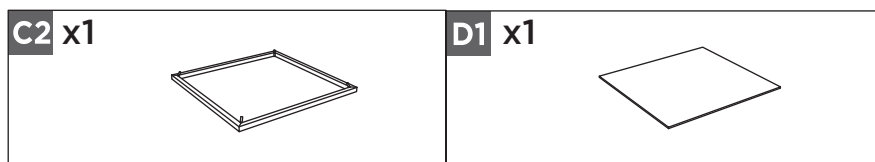


# Step-by-step Guide

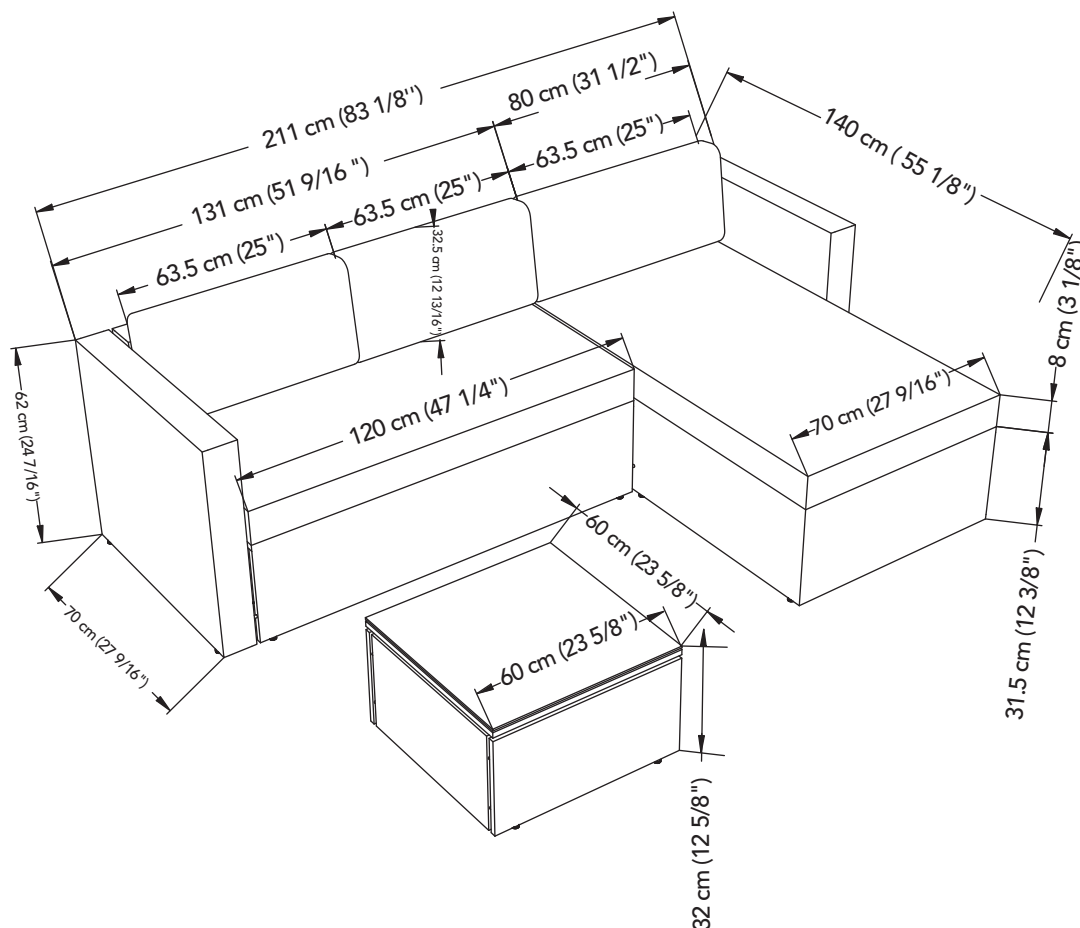


## Step 14

Carefully place glass (D1) with top panel (C2) on the top.



# Technical Data



## Dimensions

Coffee Table: 60 x 60 x 32 cm (23 5/8 x 23 5/8 x 12 5/8")

Loveseat: 131 x 70 x 62 cm (51 9/16 x 27 9/16 x 24 3/8")

Chaise Lounge Chair: 80 x 140 x 62 cm (31 1/2 x 55 1/8 x 24 3/8")

## Product Weight

37 kg

81 lb 9 oz



# Troubleshooting



Need help?  
Give us a call! We're here for you.

Toll-free: 1-877-483-6759



Before returning your  
product to store

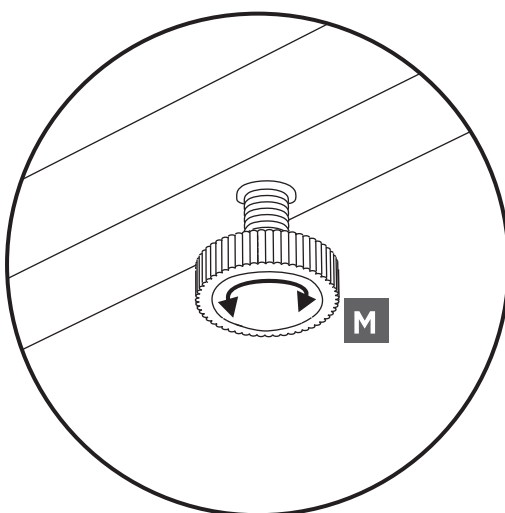


Call us first!

If you have questions regarding your product  
or require warranty assistance, please call our  
customer service helpline.

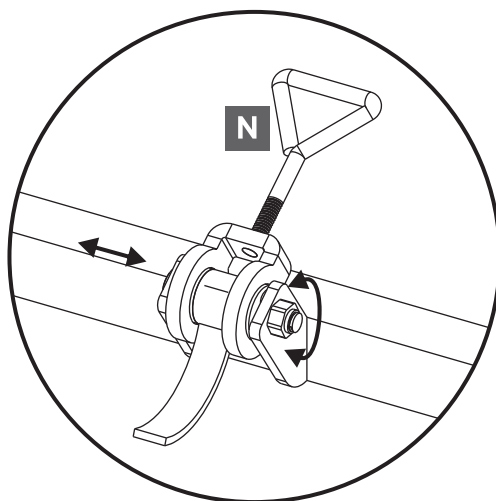
**Notice: The following steps are only for after-sale service if the parts are damaged.**

## Step 1



Replace foot pad: Remove the old foot pad in a counter-clockwise direction, then assemble the new footrest in a clockwise direction.

## Step 2



Replacement buckle: Remove the bolt and nut of the old buckle in a counter-clockwise direction, then assemble the new buckle with the bolt and nut in a clockwise direction.

# Caring For Your Item

- 1 We recommend the use of furniture covers when not in use.
- 2 The cushion may be spot cleaned on the surface only; do not clean in washing machine.
- 3 Clean and dry before storing in a dry, sheltered area.
- 4 Clean the chair frame with mild soap and water. Rinse thoroughly.
- 5 Do not use bleach, acid or other abrasive cleaners on the chair or frame parts.

# Warranty



## 1-Year Limited Warranty\*

This For LIVING® product carries a one (1) year warranty against defects in workmanship and materials. Trileaf Distribution agrees to replace the defective product free of charge within the stated warranty period, when returned by the original purchaser with proof of purchase. This product is not guaranteed against wear or breakage due to misuse and/or abuse.

**Model No. 499-4099-6**

Made in China

Imported by Trileaf Distribution Trifeuil Toronto, Canada M4S 2B8