



**800Amp Vehicle Jump Starter &  
Portable Inflator  
INSTRUCTION MANUAL  
P/N 030-3010-WH**



**Read this material before using this product.  
Failure to do so can result in serious injury.  
Save this manual.**

**CONTENTS**

Important Safety Instructions & Warnings .....	3
Product Specifications.....	6
Product Overview.....	6
Operating Instructions.....	7
Jump Starting a Vehicle.....	8
Portable Inflator Operating Instructions.....	10
Charging the Vehicle Jump Starter.....	12
User Maintenance Instructions.....	13
Trouble Shooting .....	13
Regulatory Warnings.....	14
Customer Service.....	15
Warranty.....	15

# IMPORTANT SAFETY INSTRUCTIONS

## WARNING

When using this product, basic precautions should always be followed. Including the following:

1. Save these instructions.
2. Read all the instructions before using the product.
3. To reduce the risk of injury, close supervision is necessary when the product is used near children.
4. Do not put fingers or objects into the product.
5. Use of an attachment not recommended or sold by the jump starter manufacture may result in a risk of fire, electric shock, or injury to person.
6. To reduce the risk of damage to the electric plug, pull on the plug rather than the cords when disconnecting the jump starter.
7. Do not use a battery pack or appliance that is damaged or modified. Damaged or modified batteries may exhibit unpredictable behavior resulting in fire, explosion, or risk of injury.
8. Do not operate the jump starter with a damaged cord or plug.
9. Do not disassemble the jump starter, only a qualified service technician should service the product. Incorrect reassembly may result in a risk of fire or electric shock.
10. To reduce the risk of electric shock, unplug the jump starter from the outlet before attempting any instructed servicing.

## WARNING

### **RISK OF EXPLOSIVE GASES**

1. WORKING IN THE VICINITY OF A LEAD ACID BATTERY IS DANGEROUS. BATTERIES GENERATE EXPLOSIVE GASES DURING NORMAL BATTERY OPERATION. FOR THIS REASON, IT IS THE UTMOST IMPORTANCE THAT YOU FOLLOW THE INSTRUCTIONS EACH TIME YOU USE THE POWER PACK.

2. To reduce the risk of battery explosion, follow these instructions and those published by the battery manufacturer and manufacturer of any equipment you intend to use in the vicinity of the battery. Review all cautionary marking on these products and on engine.

## PERSONNEL PRECAUTIONS

1. Consider having someone close enough by to come to your aid when working near lead-acid battery.
2. Have plenty of fresh water and soap nearby in case battery acid contacts skin, clothing, or eyes.
3. Wear complete eye protection and clothing protection. Avoid touching eyes while working near battery.
4. If battery acid contacts skin or clothing, wash immediately with soap and water. If acid enters eye, immediately flood eye with cold water for at least 10 minutes and get medical attention.
5. NEVER smoke or allow a spark or flame in vicinity of battery or engine.
6. Be extra cautious to reduce the risk of dropping a metal tool onto the battery. It might spark or short-circuit battery or other electrical part that may cause explosion.
7. Remove personnel metal items such as rings, bracelets, and watches when working with a lead-acid battery. A lead-acid battery can produce a short-circuit current high enough to weld a ring or the like to metal, causing severe burn.

## WARNING

1. When charging the jump starter's internal battery, work in a well-ventilated area and do not restrict ventilation in any way.
2. Under abusive conditions, liquid may be ejected from the battery, avoid contact. If contact accidentally occurs, flush with water. If liquid contacts eyes, additionally seek medical help. Liquid ejected from the battery may cause irritation or burn.
3. Do not expose a jump starter to fire or excessive temperature. Exposure to fire or temperature above 130°C may cause explosion.
4. Have servicing performed by a qualified technician using only factory replacement parts.

### CAUTION

- 1) Do not immerse in water.
- 2) Do not use or store the VEHICLE JUMP STARTER/PORTABLE INFLATOR near sources of fire or a heater.
- 3) Do not put the VEHICLE JUMP STARTER/PORTABLE INFLATOR into a fire or apply direct heat to it.
- 4) Do not pierce the VEHICLE JUMP STARTER/PORTABLE INFLATOR casing.
- 5) Do not strike, throw, or subject the VEHICLE JUMP STARTER/PORTABLE INFLATOR to severe physical shock.
- 6) Do not attempt to modify the VEHICLE JUMP STARTER/PORTABLE INFLATOR in any way.
- 7) Do not place the VEHICLE JUMP STARTER/PORTABLE INFLATOR in a microwave oven or pressurized container.
- 8) Do not use the VEHICLE JUMP STARTER/PORTABLE INFLATOR if it gives off an odor or generates heat.
- 9) Do not insert any metal object into the cable input opening as this could cause a spark and electric shock.

## PRODUCT SPECIFICATIONS

### Vehicle Jump Starter & Portable Inflator

Type – C USB Port – IN	5V, 2.0Amp
USB Port - OUT	5V, 2.1Amp
Portable Inflator	140PSI Max
Start Current/Peak Current	12VDC, 400Amp/800Amp
Model Part Number	030-3010-WH
Operating Temperature	32°F -104°F (0°C – 40°C)
Warranty	1 year
Certification	CEC, DOE, FCC, ICES-001
Transportation	UN38.3

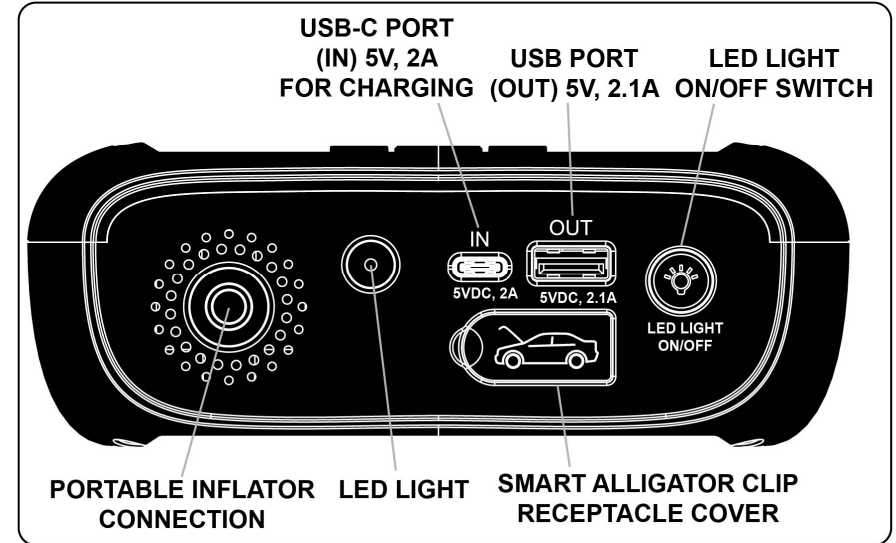
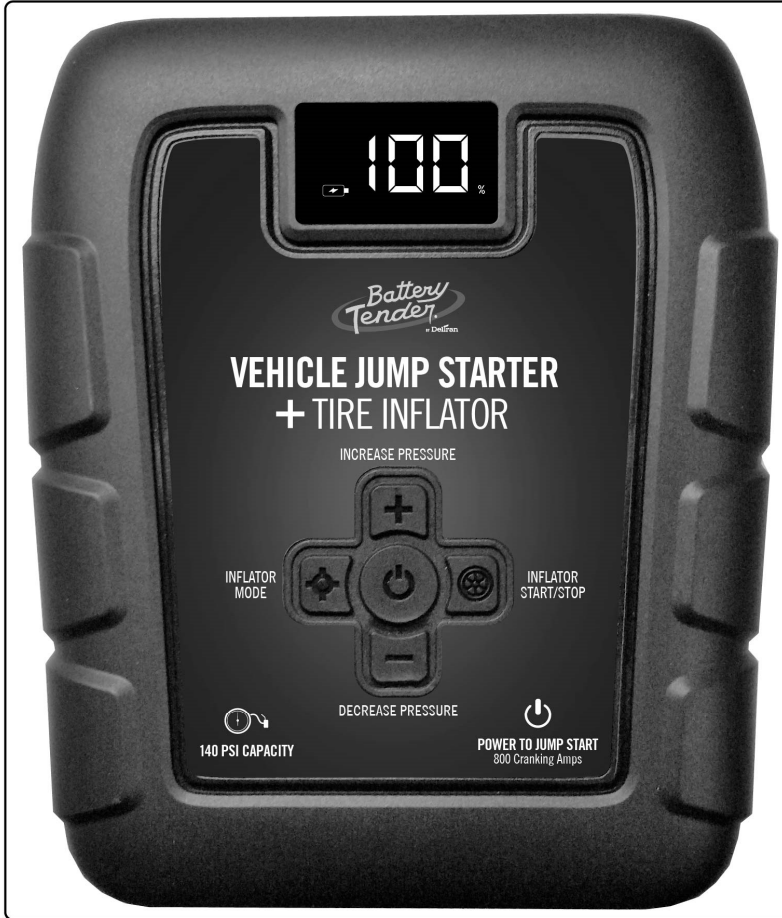
## PRODUCT OVERVIEW

Below is a list of items that should be included in your retail box:

- 1) Vehicle Jump Starter & Portable Inflator
- 2) Smart Alligator Clips
- 3) USB Charging Cable
- 4) Inflator Hose
- 5) Inflator Nozzles (3)
- 6) Canvas Bag
- 7) Instruction Manual

## OPERATING INSTRUCTIONS

### VEHICLE JUMP STARTER & PORTABLE INFLATOR FEATURES



### JUMP STARTING A VEHICLE

- 1) Before jump starting your vehicle always check the manufacturer instructions/recommendations/warnings first.
- 2) Check the internal battery charge status of the Vehicle Jump Pack by pressing the **“Power Button”** for 2 seconds before jump starting your vehicle.



- 3) Power will come on; the battery percentage will be displayed on the LCD screen.
- 4) **There must be at least 50% of battery level available.**
- 5) Insert the smart alligator clip connector into the end of the Jump Pack.
- 6) Connect the RED positive clip to the positive post on the battery, then the BLACK negative clip to the negative post on the battery.
- 7) **CAUTION:** Ensure the Vehicle Jump Pack and smart alligator clip cables are clear of all vehicle fan blades/belts/pulleys etc. before proceeding.

- 8) The LED on the smart alligator clips will then turn solid GREEN. Wait 5 to 10 seconds then start your vehicle
- 9) Remove the clips **IMMEDIATELY** after the vehicle has started. Black negative clamp first.
- 10) DO NOT use the Vehicle Jump Starter to repeatedly try and start your vehicle. Wait at least thirty (30) seconds between attempts. Check vehicle after three attempts.

## SMART ALLIGATOR CLIPS

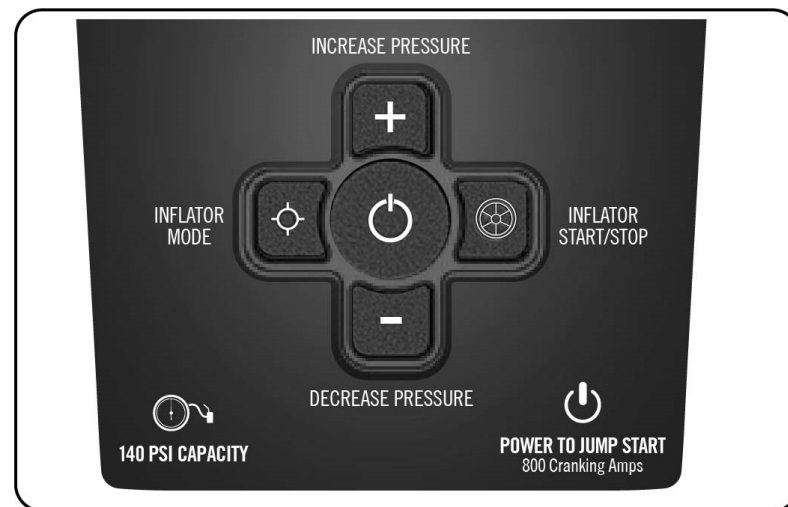



The smart alligator clips contain a **Green** and **Amber** LED along with a warning buzzer for Faults and Error protection:

- 1) If correctly connected to the battery the LED on the smart alligator clips should go from flashing **Green** to solid **Green**.
- 2) Standby Mode – Clips are not connected, or bad connection – The **Green** LED Flashes.
- 3) If the lithium battery pack of the jump starter is lower than 14V, the **Amber** LED will light up solid and buzzer beeps slowly.

- 4) If lithium battery pack of the jump pack is higher than 17.5V, the **Amber** LED will light up solid and buzzer on sold. (Smart clips plugged into incorrect voltage jump pack)
- 5) Alligator clips connected to vehicle battery in reverse polarity. (Red clip to Black negative terminal, Black clip to Red positive terminal). **Amber** LED lights up solid and buzzer beeps rapidly.
- 6) Short circuit protection -, **Amber** LED lights up solid and buzzer beeps rapidly
- 7) Overheat protection -, **Amber** LED flashes. Buzzer beeps slowly.

## PORTABLE INFLATOR FEATURES



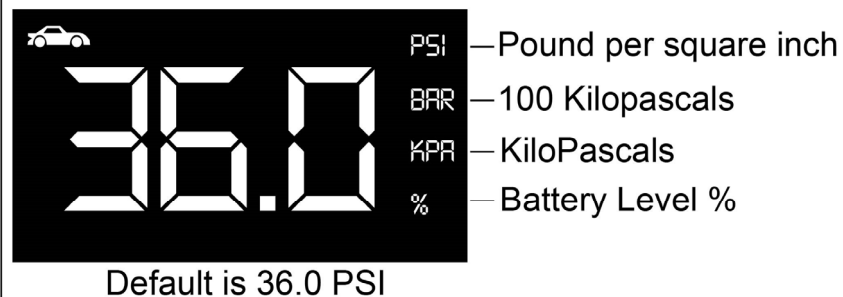
- 1) Connect the supplied air hose to the connection on the end on the unit.
- 2) Press and hold the **“Power Button”**  for 2 seconds and the


power will come on; the battery percentage will be displayed on the LCD screen.

- 3) Press the **“Inflator Mode”**  button and the LCD will change to the **Inflator Mode Screen**.

- 4) See below.

### Inflator Mode Screen




- 5) The default setting is 36.0 PSI. To change from PSI/BAR/KPA simply press the **“Inflator mode”**  button with a single press.

- 6) To adjust the automatic cut off pressure setting, press either the **+** or **-** button to adjust the value up or down.



- 7) Connect inflator hose to valve stem.

- 8) To Start/Stop the inflator press the **“Inflator Start/Stop”**  button.

- 9) The inflator will shut off at the preset pressure.

### CAUTION

- 1) The inflation air pressure of balloons, balls, swimming rings/floats and other products is less than the range of the air pump, and the inflation cannot be automatically stopped at the preset air pressure. Please be careful when using it under these conditions.
- 2) Always check the required air pressure and the maximum air pressure when inflating any tires.

### CHARGING THE VEHICLE JUMP STARTER & PORTABLE INFLATOR

- 1) Use the supplied USB cable to charge the Vehicle Jump Starter & Portable Inflator. **NOTE:** While charging none of the other features and functions are active.
- 2) Once the internal battery level has reached 100% the charge is complete, and the unit will turn off after 10 seconds.
- 3) The battery level should be checked and charged every three (3) months.
- 4) When charging the internal battery, work in a well-ventilated area and do not restrict ventilation in any way.

### CAUTION

- 1) The device shall be stored indoors and protected from the elements.
- 2) The unit shall not be charged outdoors.
- 3) When in use, steps should be taken to reduce the exposure to rain, sleet, snow, and the like.

## USB PORTS

There are two (2) USB ports contained in your Vehicle Jump Starter & Portable Inflator.

- 1) Type – C USB, (IN) port – 5V, 2Amp for charging the internal battery contained inside the Jump Starter & Portable Inflator.
- 2) Type USB (OUT), 5A, 2.1Amp.

## LED FLASHLIGHT

- 1) To turn the LED lights ON simply hold the ON/OFF Button down for at least two (2) seconds.
- 2) To turn the LED lights OFF hold the ON/OFF Button down for at least two (2) seconds.

## USER MAINTENANCE INSTRUCTIONS

- 1) The battery level should be checked, and the Vehicle Jump Starter & Portable Inflator should be charged every three (3) months. Keeping the internal battery fully charged will ensure the Vehicle Jump Starter & Portable Inflator in ready to use when needed. This will also extend the life of the internal battery.
- 2) Store the Vehicle Jump Starter & Portable Inflator in a clean dry environment at room temperature if possible.
- 3) If you see a bulge in the case or notice a chemical smell STOP using the Vehicle Jump Starter & Portable Inflator immediately and seek technical help.

## TROUBLE SHOOTING

PROBLEM	SOLUTION
The vehicle will not start	Check the connection of the alligator clips to the battery terminals and ensure the LED is solid green and not flashing on the smart alligator clips. Ensure you have a minimum of 50% value for the internal battery.
Vehicle Jump Pack & Portable Inflator will not charge	Check the cable and connection and try charging a different device.

## FCC WARNING

Title 47 Subpart, 15.105(b)

Note: This equipment has been tested and found to comply with the limits for a class B digital device, pursuant to part 15 of the FCC Rules. These limits are designed to provide reasonable protection against harmful interference in residential installation. This equipment generates, uses, and can radiate radio frequency energy and, if not installed and used in accordance with the instructions, may cause harmful interference to radio television reception, which can be determined by tuning the equipment off and on, the user is encouraged to try to correct the interference by one or more of the following measures:

- Reorient or relocate the receiving antenna.
- Increase the separation between the equipment and receiver.
- Connect the equipment into an outlet on a circuit different from that to which the receiver is connected.
- Consult the dealer or an experienced radio/TV technician for help.

This device complies with part 15 of the FCC Rules. Operation is subject to the following two conditions: (1) This device may not cause harmful interference, and (2) this device must accept any interference received, including interference that may cause undesired operation.

## **ICES-001: Industrial, Scientific, and Medical (ISM) Radio Frequency Generators**

This product has been tested with the listed standards and found to be compliant with the Code of Industry Canada ES-001 and the measurement Procedure according to CISPR 11.

CAN ICES-001B / NMB-001B

## **CUSTOMER SERVICE**

For customer support please visit [batterytender.com](http://batterytender.com). You can also call our customer service hotline 877-456-7901

## **WARRANTY**

The Battery Tender® Vehicle Jump Starter & Portable Inflator comes with a twelve (12) month limited warranty against defects or failure (within one (1) year of purchase).

THIS LIMITED WARRANTY IS VOID under the following conditions:

- 1) The product is misused, subjected to careless handling, or operated under conditions of extreme temperature, shock, or vibration beyond our recommendations for safe and effective use.
- 2) The product is disassembled or repaired by anyone who is not an authorized service representative of Battery Tender®
- 3) The product was purchased from an unauthorized source. Warranty is not transferable from the original purchaser.
- 4) Any physical damage to any of components or any accessory after purchase.
- 5) Any modifications to any of the components.
- 6) Any corrosion including salt water.