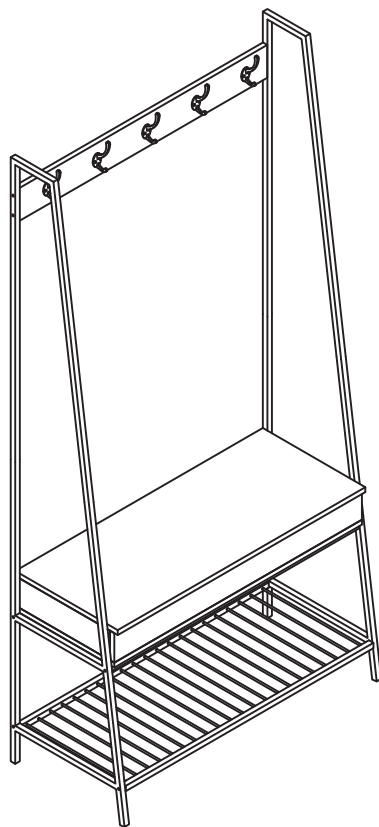


CANVAS^{TM/MC}

LANGHAM HALL TREE

MODEL NO. 168-0085-0



ASSEMBLY INSTRUCTIONS



HAVING TROUBLE?

TOLL-FREE:

1-888-670-6684

CANVAS^{TM/MC}

We believe the power of decor and how it makes up the fabric of your home.

That's why the **CANVAS** assortment gets its inspiration from Canadians and the way they live.

From on-trend furniture pieces, to Holiday Decor and Outdoor Living, **CANVAS** makes it easy to refresh your space to reflect **your unique style and the way you live.**

We welcome your thoughtful comments and feedback so please visit our website to tell us about your experience.

We would love to see how you bring **CANVAS** to life. Please share your photos using **#mycanvasstyle.**

TABLE OF CONTENTS

Parts List/ Exploded View	4
Step-by-Step Instructions	8
Warranty	18
Caring for your item	18



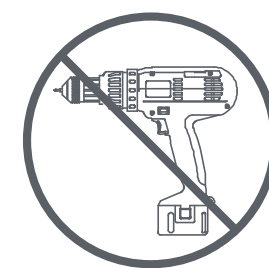
WARNING! TO REDUCE THE RISK OF SERIOUS INJURY, READ THE FOLLOWING SAFETY INSTRUCTIONS BEFORE ASSEMBLING AND USING THE STORAGE BENCHTT

- This product is intended for domestic indoor use only.
- The product should be placed on a flat horizontal surface.
- Arrange necessary manpower when assembling or moving the product.
- Do not push furniture, especially on a carpeted floor. Have someone help you lift heavy items and set in place.
- Check all screws periodically for tightness. When required, tighten them again.
- Do not exceed maximum weight capacity of 286 lb (130 kg) on bench.
- Do not exceed maximum weight capacity of 6 lb 10 oz (3 kg) per hook.
- Do not exceed maximum weight capacity of 57 lb (26 kg) on shoe rack.

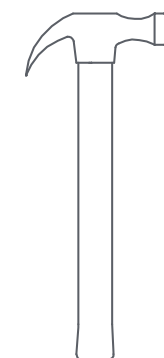
TOOLS REQUIRED



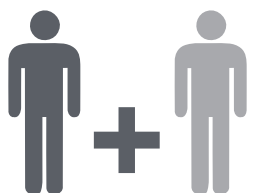
No. 2 Phillips Screwdriver
Tip Shown Actual Size



To avoid damage, ensure screws are hand tightened. **DO NOT USE POWER TOOLS TO ASSEMBLE YOUR UNIT**



Hammer

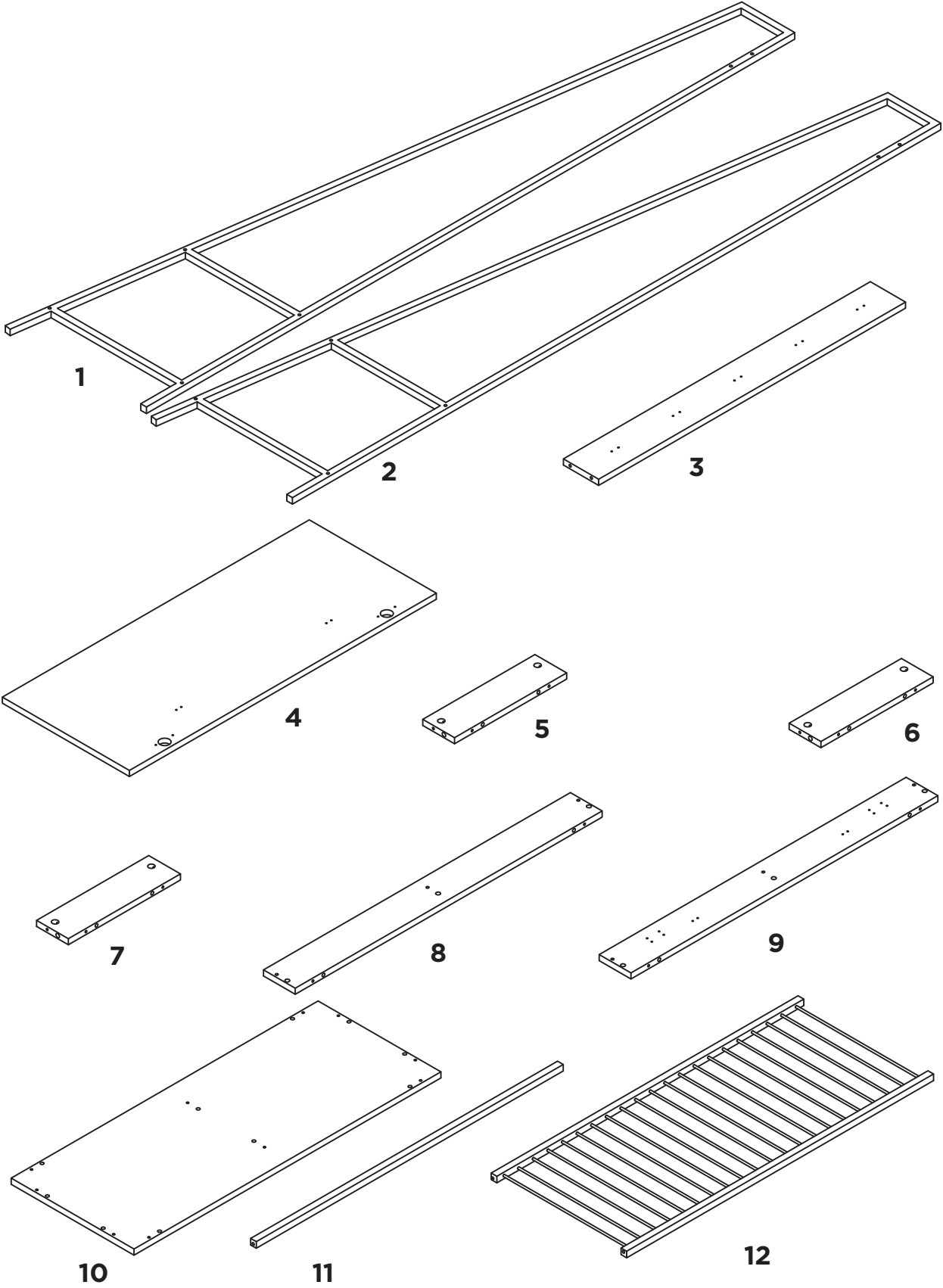


2 people

PARTS LIST

ITEM	DESCRIPTION	QUANTITY
1	Left Side Frame	1
2	Right Side Frame	1
3	Back Rail	1
4	Bench Top Panel	1
5	Bench Left Side	1
6	Bench Divider	1
7	Bench Right Side	1
8	Bench Front	1
9	Bench Back	1
10	Bench Bottom	1
11	Bench Bottom Support Rails	2
12	Shoe Rack	1

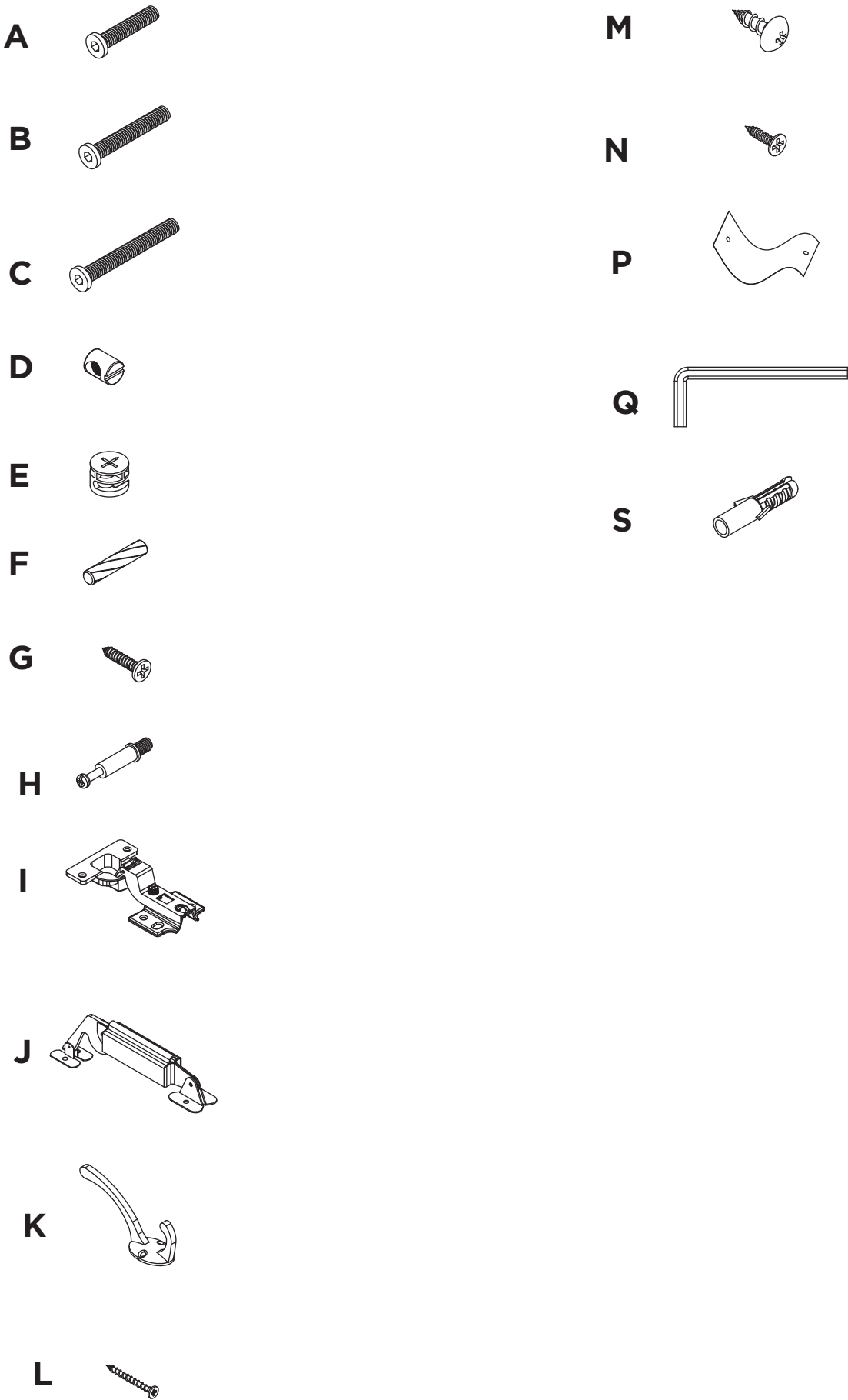
EXPLODED VIEW



PARTS LIST

ITEM	DESCRIPTION	QUANTITY
A	Small Screws	8
B	Medium Screws	6
C	Large Screws	4
D	Cap Nuts	4
E	Hidden Cams	6
F	Wood Dowels	16
G	Screws	20
H	Coupling Bars	6
I	Door Hinges	2
J	Hinges	2
K	Hooks	5
L	Tapping Screws	12
M	Pan Head Screws	2
N	Flat Head Screws	10
P	Anti-Tip Restraints	2
Q	Spanner	1
S	Expansion Screws	2

EXPLODED VIEW



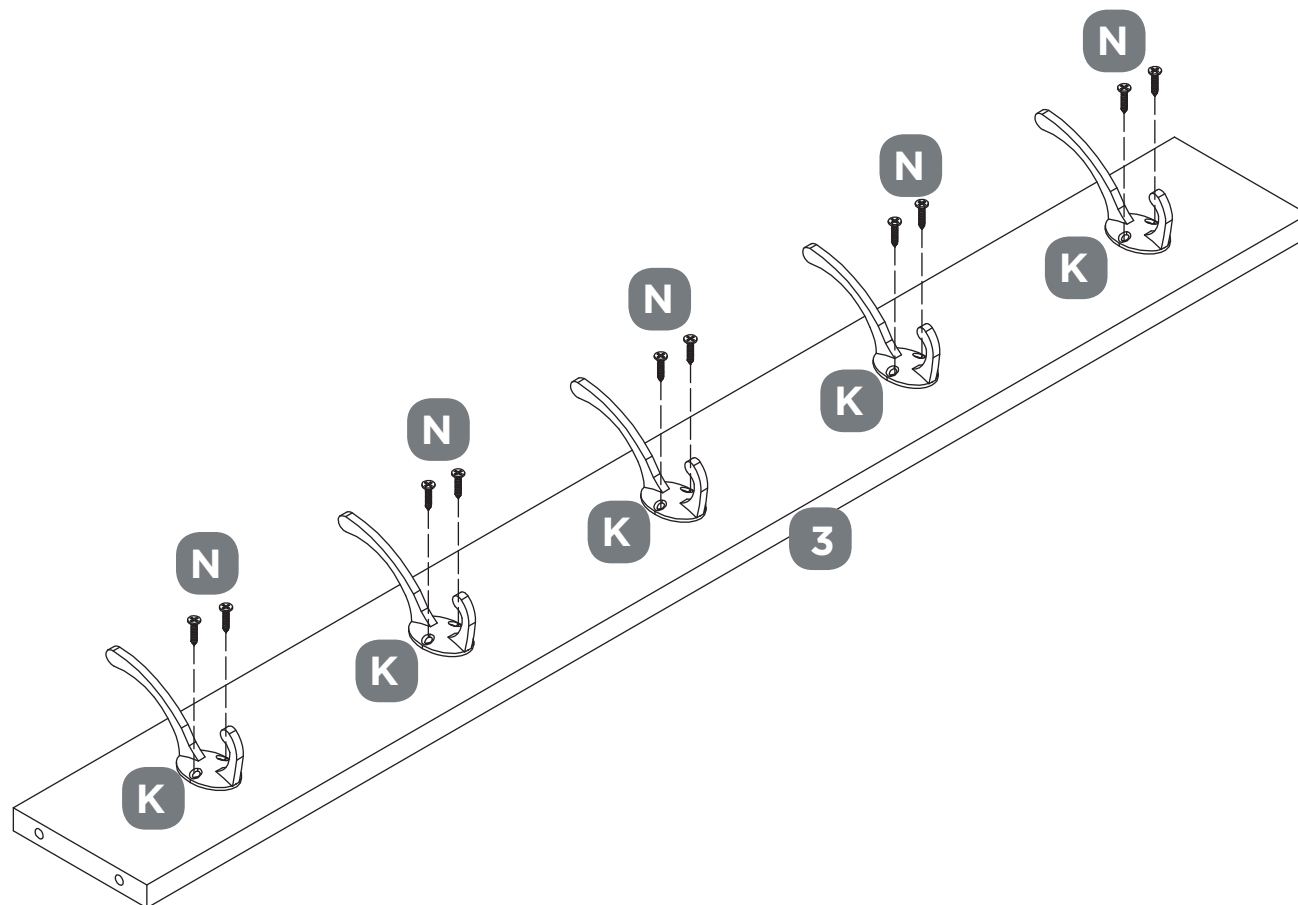
STEP-BY-STEP INSTRUCTIONS

STEP 1

REQUIRES K, N, 3

NOTE: Two people are needed to build this unit.

Fasten five HOOKS (K) on BACK RAIL (3), using ten FLAT HEAD SCREWS (N).
Hand tighten the FLAT HEAD SCREWS.



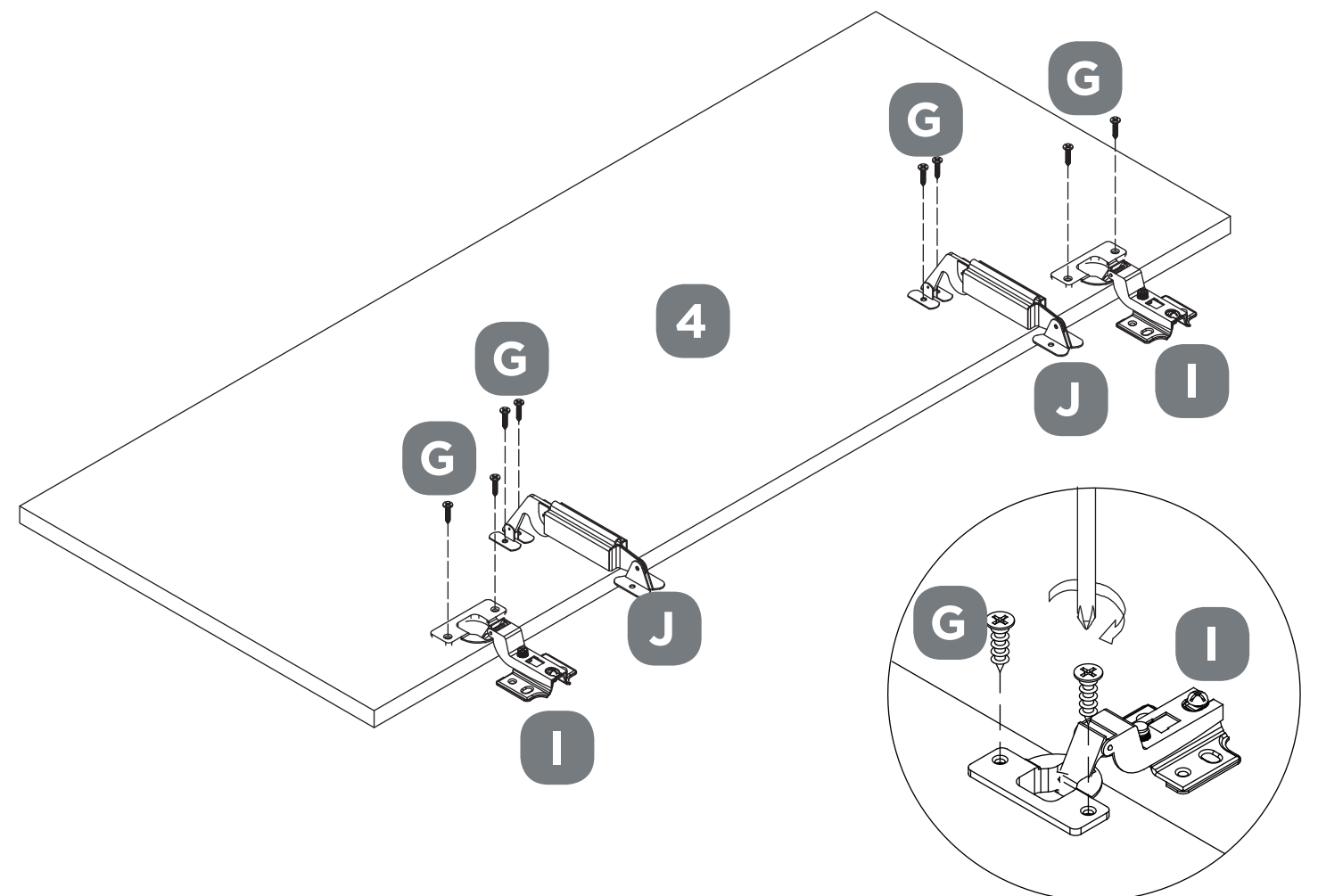
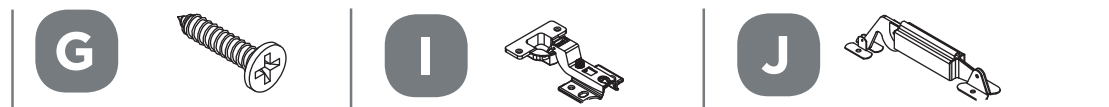
STEP 2

REQUIRES G, I, J, 4

Fasten the DOOR HINGES (I) to the left and right side of the BENCH TOP PANEL (4), using four SCREWS (G). Hand tighten the SCREWS (G).

Fasten HINGES (J) to the left and right side of the BENCH TOP (4), using four SCREWS (G). Hand tighten the SCREWS.

Note: Ensure the DOOR HINGES (I) and HINGES (J) in the correct position.

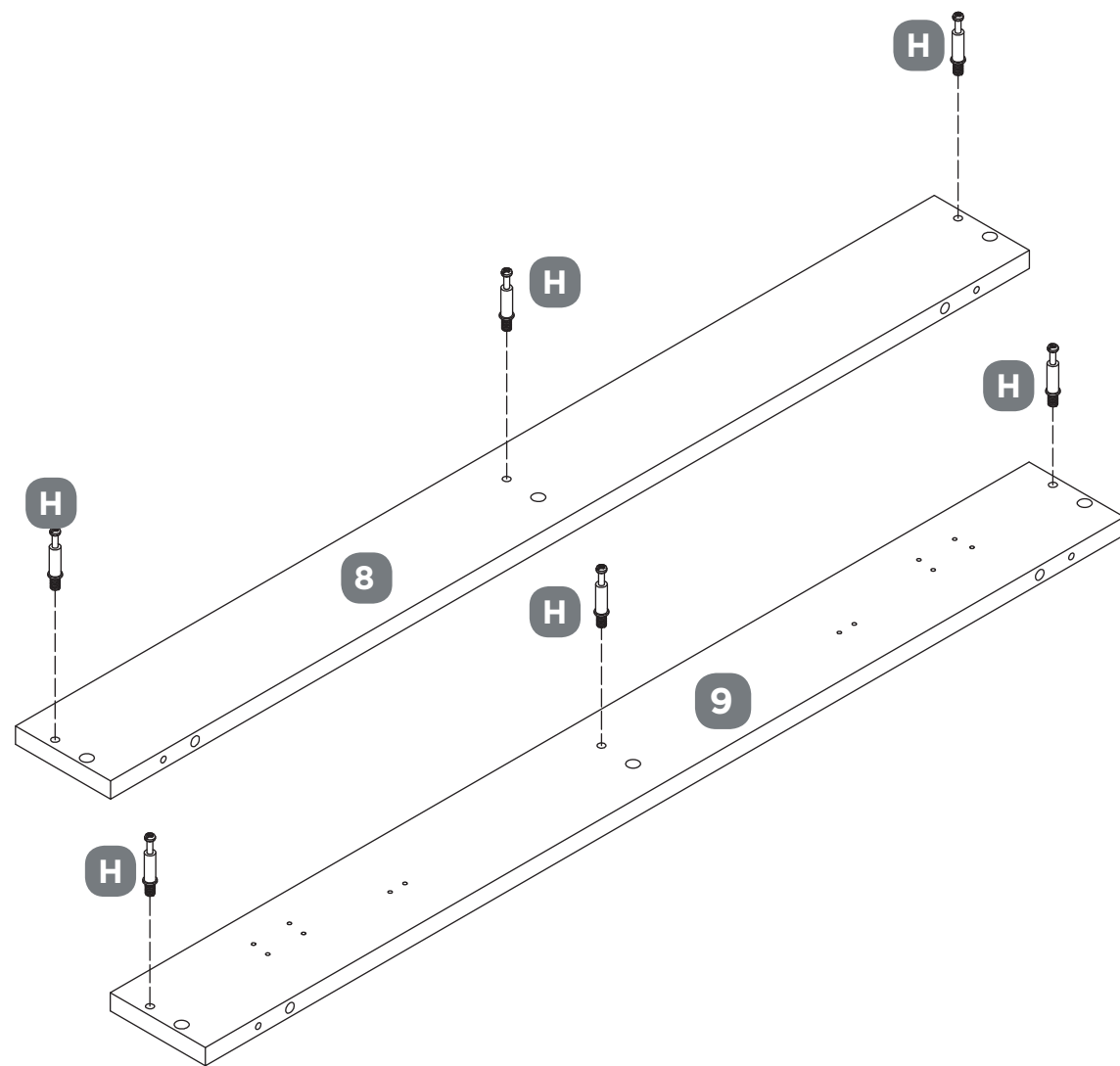
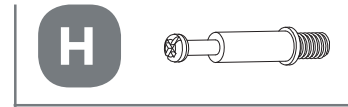


STEP-BY-STEP INSTRUCTIONS

STEP 3

REQUIRES H, 8, 9

Insert COUPLING BARS (H) into the BENCH FRONT (8) and BENCH BACK (9).
Hand tighten the COUPLING BARS.



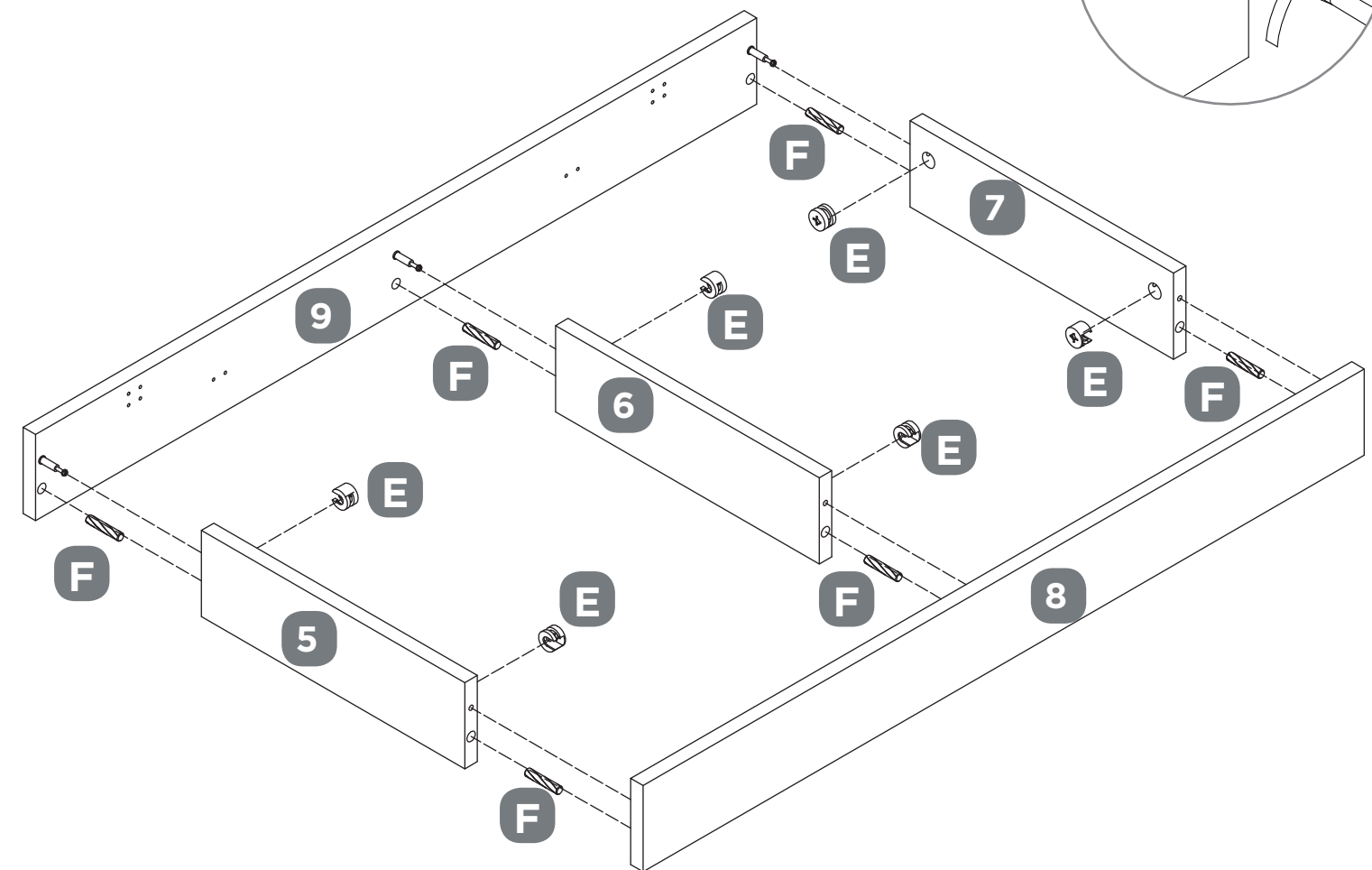
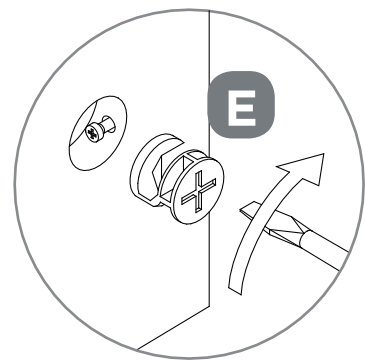
STEP 4

REQUIRES E, F, 5, 6, 7, 8, 9

Insert six WOOD DOWELS (F) into the both ends of BENCH LEFT SIDE (5),
BENCH DIVIDER (6), BENCH RIGHT SIDE (7).

Insert six HIDDEN CAMS (E) into the BENCH LEFT SIDE (5), BENCH DIVIDER (6),
BENCH RIGHT SIDE (7).

Fasten BENCH FRONT (8) and BENCH BACK (9) to the BENCH LEFT SIDE (5),
BENCH DIVIDER (6), BENCH RIGHT SIDE (7).
Hand tighten the HIDDEN CAMS (E).



STEP-BY-STEP INSTRUCTIONS

STEP 5

REQUIRES F, L, 5, 6, 7, 8, 9, 10

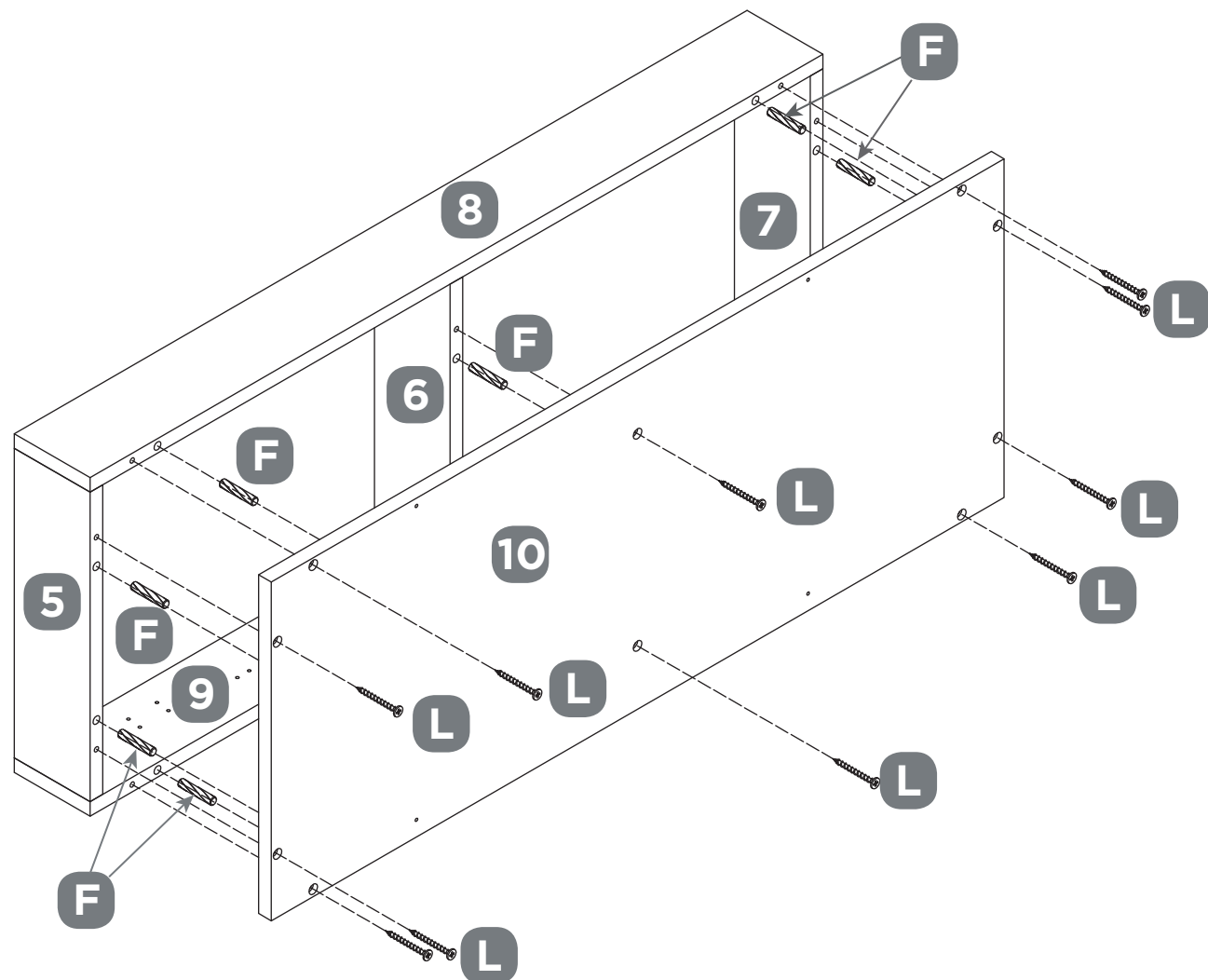
Turn over the assembled part from Step 4;

Insert ten WOOD DOWELS (F) into the bottom of BENCH LEFT (5), SIDE BENCH DIVIDER (6), BENCH RIGHT SIDE (7), BENCH FRONT (8), BENCH BACK (9).

Turn ten TAPPING SCREWS (L) into the exact holes in the BENCH BOTTOM (10).

Hand tighten ten TAPPING SCREWS (L) to the BENCH BOTTOM.

NOTE: Ensure the WOOD DOWELS (F) are in the correct position.
Ensure the TAPPING SCREWS (L) are tightened.

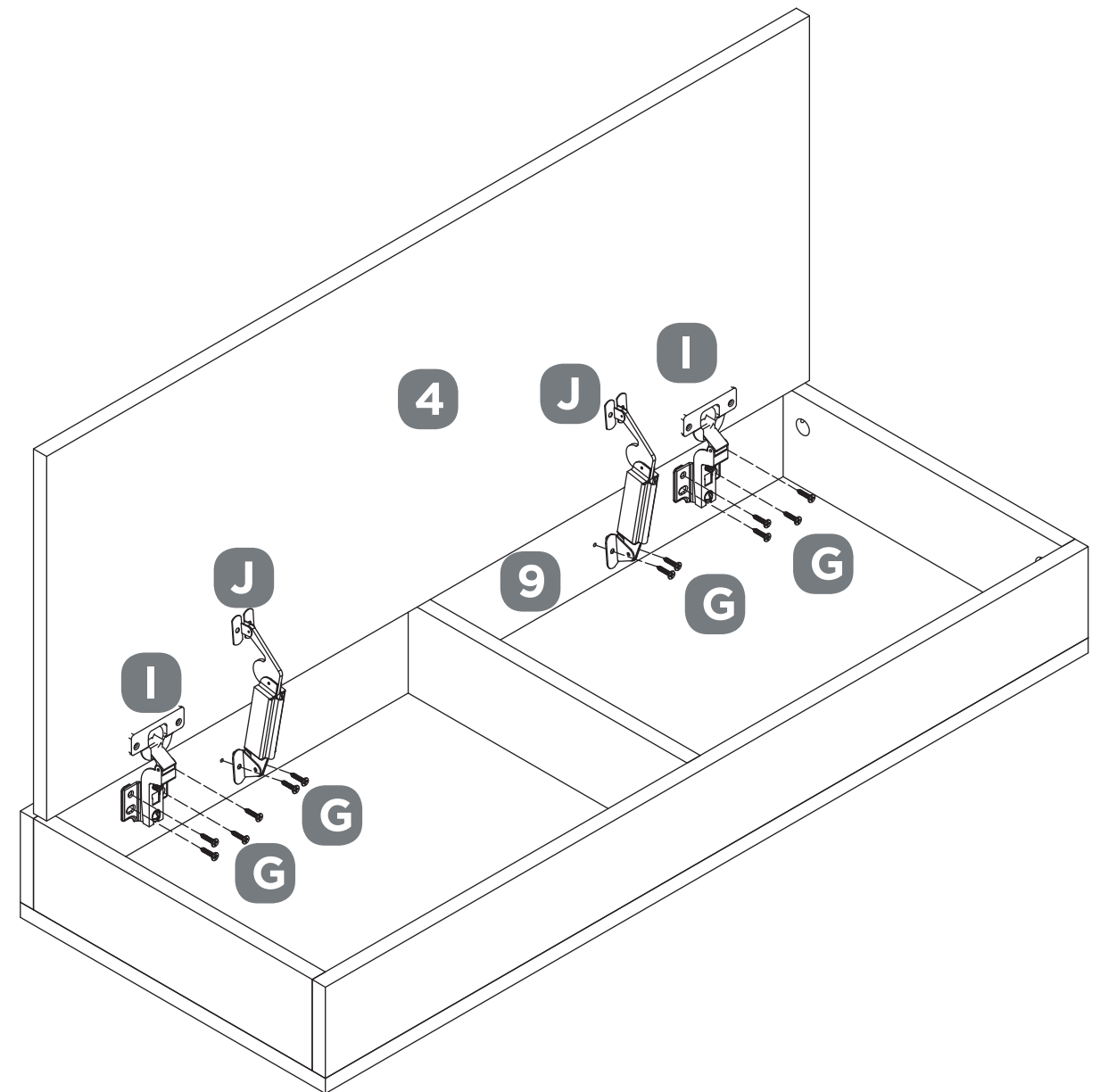


STEP 6

REQUIRES G, I, J, 9

Fasten two HINGES (J) and two DOOR HINGES (I) to the BENCH BACK (9), using four SCREWS (G). Hand tighten the SCREWS (G).

NOTE: Ensure the DOOR HINGES (I) and HINGES (J) are in the correct position.
Ensure the SCREWS are tightened.



STEP-BY-STEP INSTRUCTIONS

STEP 7

REQUIRES A, C, D, M, P, Q 1, 2, 3, 11, 12

Insert two CAP NUTS (D) into the BACK RAIL (3).
Insert LARGE SCREWS (C) into the upper holes of the LEFT SIDE FRAME (1).
Hand tighten the LARGE SCREWS (C) to the BACK RAIL (3).

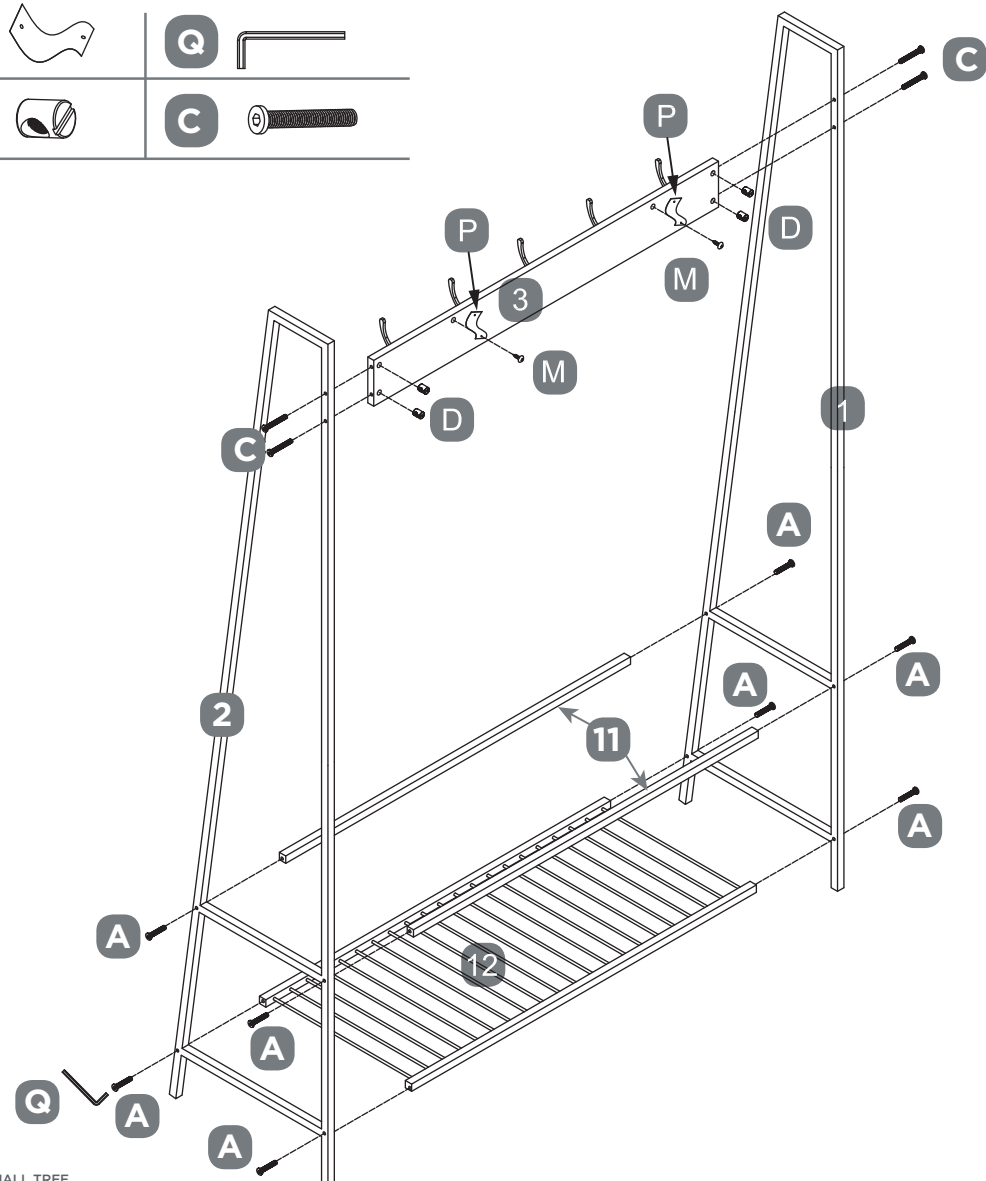
Insert two SMALL SCREWS (A) into the middle holes of the LEFT SIDE FRAME (1).
Hand tighten the SMALL SCREWS (A) to the BENCH BOTTOM SUPPORT RAILS (11).

Insert two SMALL SCREWS (A) into the bottom holes of the LEFT SIDE FRAME (1).
Hand tighten the SMALL SCREWS (A) to the SHOE RACK (12).

Repeat the procedures to the RIGHT SIDE FRAME (2).
Insert two PAN HEAD SCREWS (M) into two ANTI-TIP RESTRAINTS (P).

Hand tighten the PAN HEAD SCREWS (M) and ANTI-TIP RESTRAINTS (P)
to the BACK RAIL (3).

NOTE: Ensure all SCREWS are in the exact holes.

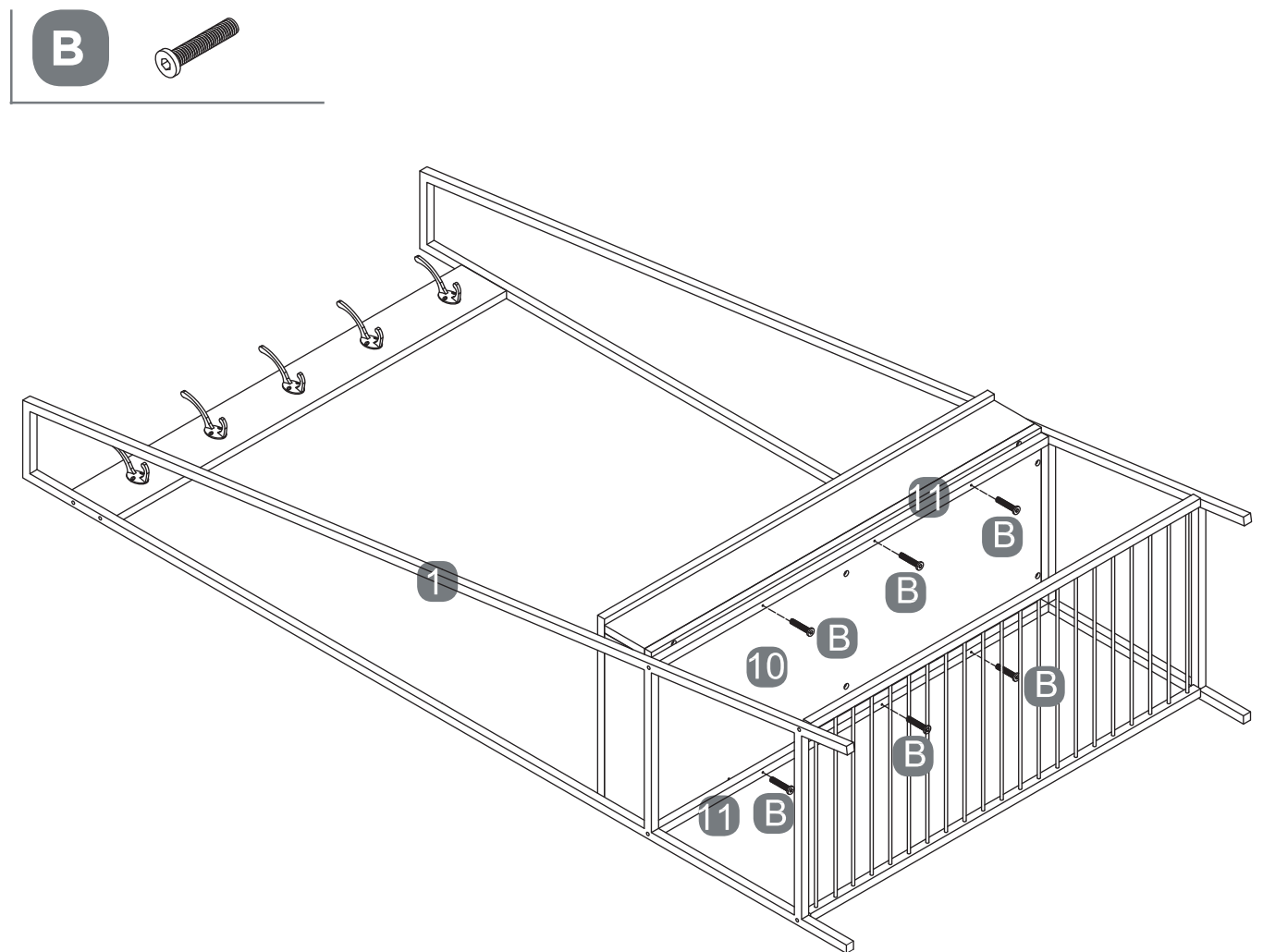


STEP 8

REQUIRES B, 10, 11
Place the item on a clean surface.

Insert six MEDIUM SCREWS (B) into the BENCH BOTTOM SUPPORT RAIL (11).
Hand tighten the SCREWS.

NOTE: Ensure all SCREWS are in the exact holes on the BOTTOM SUPPORT RAIL (11).



STEP-BY-STEP INSTRUCTIONS

STEP 9

REQUIRES P, S, L

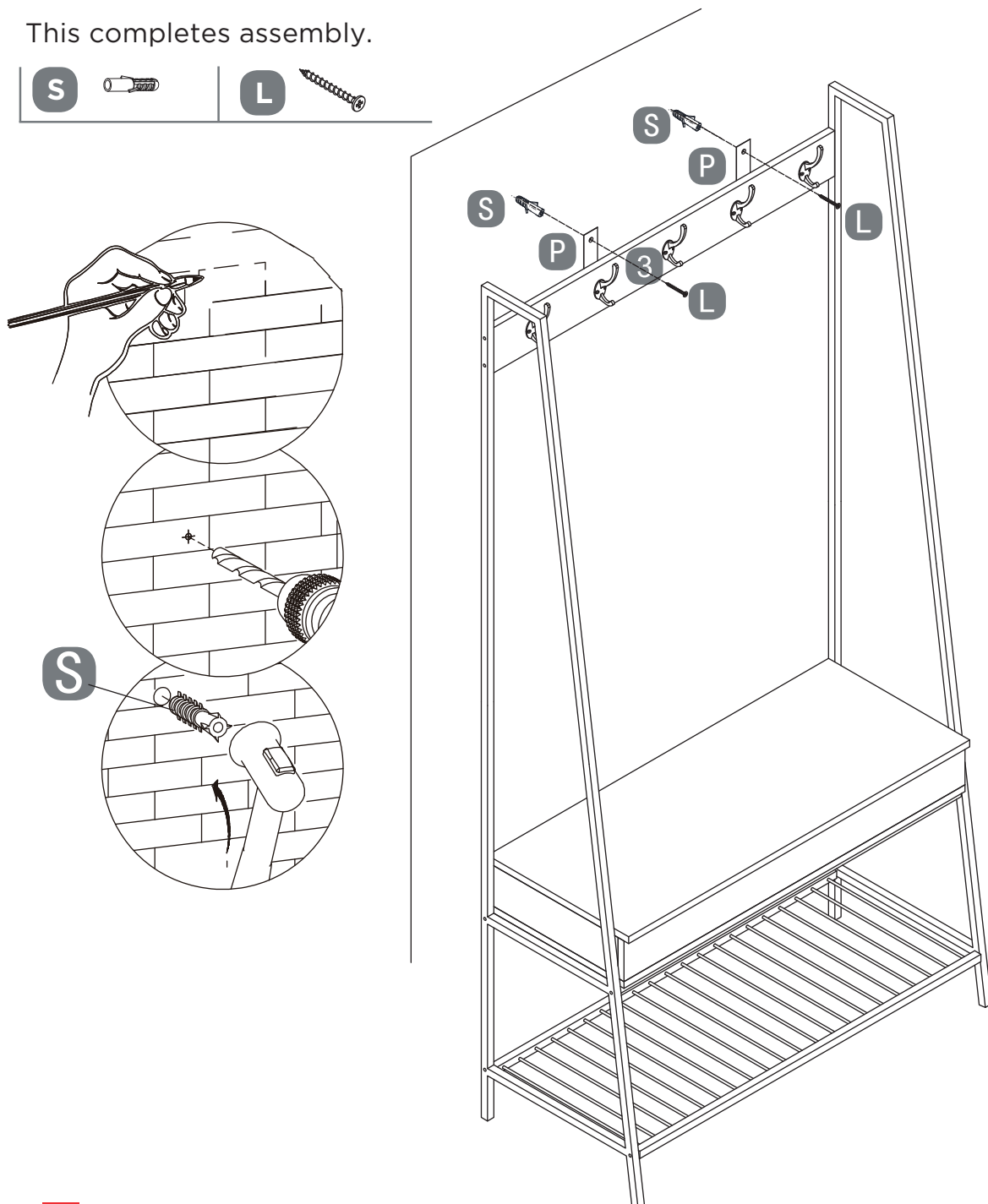
Carefully stand your unit upright and place in its final location.

Using ANTI-TIP RESTRAINTS as a guide, mark 2 spots on the wall.

Insert two EXPANSION SCREWS (S) into the wall.
Hammer the EXPANSION SCREWS into the wall.

Fasten ANTI-TIP RESTRAINTS (P) to the WALL, using two TAPPING SCREWS (L).
Hand tighten the TAPPING SCREWS.

This completes assembly.

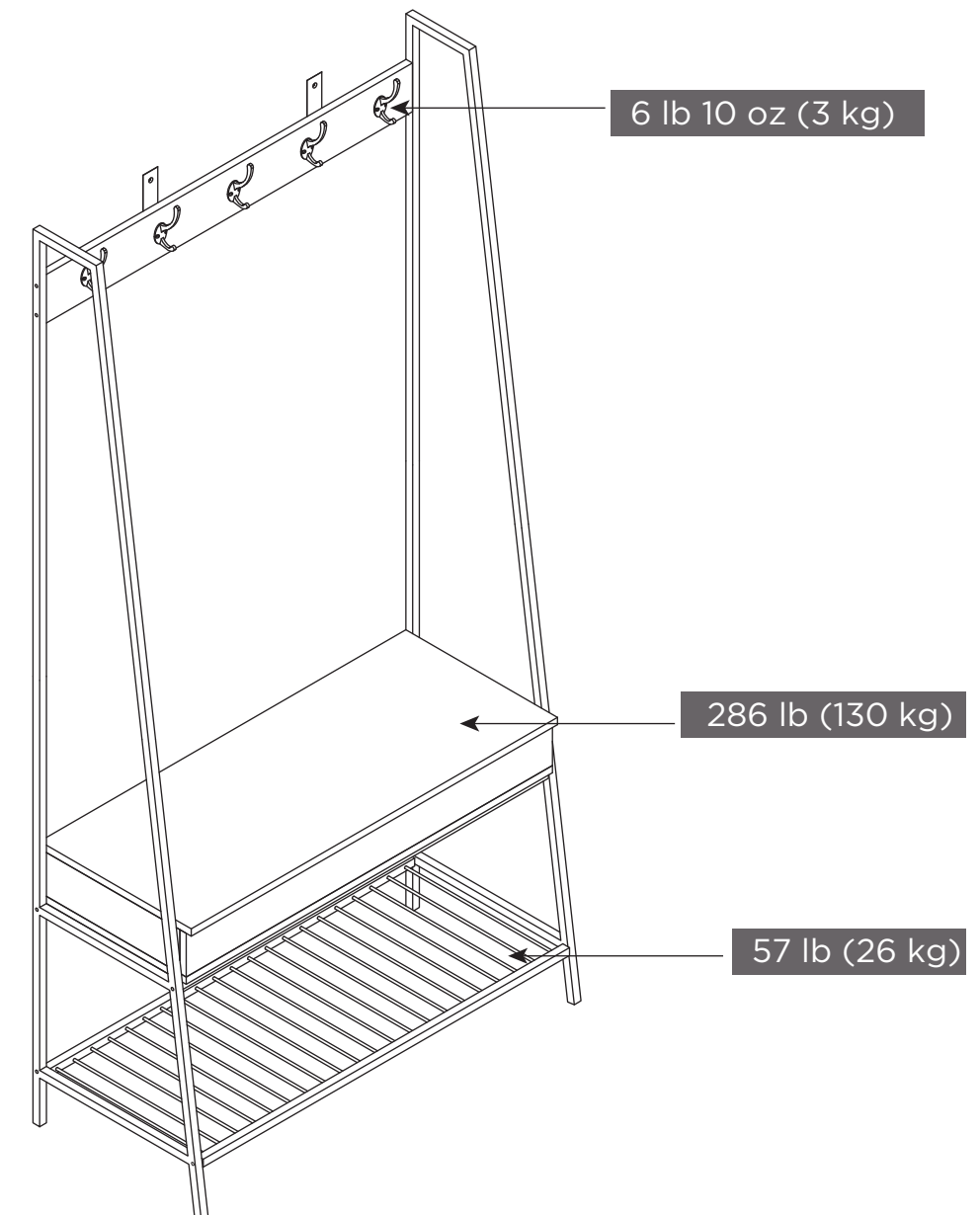


MAXIMUM WEIGHT CAPACITY

This unit has been designed to support the maximum loads shown. Exceeding these load limits could cause sagging, instability, product collapse, and/or serious injury.

Please make sure that all the objects are removed before moving the assembled unit.

The unit must be lifted by more than one person, not dragged or pushed. Failure to do so will cause product damage, instability, product collapse, and/or serious injury.



WARRANTY



1-YEAR LIMITED WARRANTY

This CANVAS™ product carries a one (1) year warranty against defects in workmanship and materials. Trileaf Distribution agrees to replace the defective product free of charge within the stated warranty period, when returned by the original purchaser with proof of purchase. This product is not guaranteed against wear or breakage due to misuse and/or abuse.

MODEL NO. 168-0085-0

Made in China

Imported by Trileaf Distribution Trifeuil Toronto, Canada M4S 2B8

CARING FOR YOUR ITEM

1 Weight Capacity:

- Do not exceed maximum weight capacity of 286 lb (130 kg) on bench.
- Do not exceed maximum weight capacity of 6 lb 10 oz (3 kg) per hook.
- Do not exceed maximum weight capacity of 57 lb (26 kg) on shoe rack.

2

Children have died from furniture tip-over. To reduce your risk:

- Do not stand on, sit on or climb this unit.
- Do not use as a stool.
- For indoor use only.
- Always place the unit on a flat level surface.
- Use felt pads on bottom of legs to protect flooring.

3

Wipe clean with a damp cloth.

4

Avoid direct sunlight.

CANVAS^{TM/MC}

Exclusively at Canadian Tire

