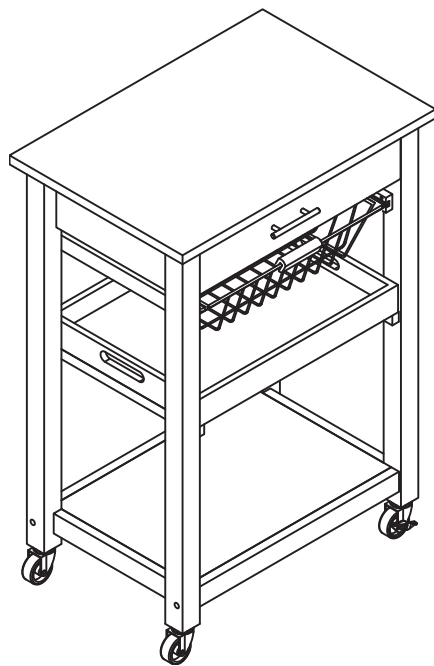


# CANVAS<sup>TM/MC</sup>

## DORVAL KITCHEN CART WITH BASKET

---

MODEL NO.168-0074-6



### ASSEMBLY INSTRUCTIONS



**HAVING TROUBLE?**

**TOLL-FREE:**

**1-888-670-6684**

# CANVAS<sup>TM/MC</sup>

**We believe** the power of decor and how it makes up the fabric of your home.

That's why the **CANVAS** assortment gets its inspiration from Canadians and the way they live.

From on-trend furniture pieces, to Holiday Decor and Outdoor Living, **CANVAS** makes it easy to refresh your space to reflect **your unique style and the way you live.**

**We welcome** your thoughtful comments and feedback so please visit our website to tell us about your experience.

We would love to see how you bring **CANVAS** to life. Please share your photos using **#mycanvasstyle.**

## TABLE OF CONTENTS

Parts List/ Exploded View	4
Step-by-Step Instructions	8
Warranty	24
Caring for your item	24



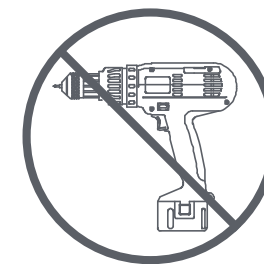
WARNING! TO REDUCE THE RISK OF SERIOUS INJURY, READ THE FOLLOWING SAFETY INSTRUCTIONS BEFORE ASSEMBLING AND USING THE KITCHEN CART WITH BASKET.

- This product is intended for domestic indoor use only.
- The product should be placed on a flat horizontal surface.
- Arrange necessary manpower when assembling or moving the product.
- Do not push furniture, especially on a carpeted floor. Have someone help you lift heavy items and set in place.
- Check all screws periodically for tightness. When required, tighten them again.
- Do not exceed maximum weight capacity of 66 lb (30 kg) on top.

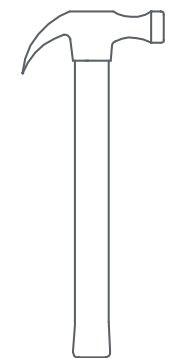
## TOOLS REQUIRED



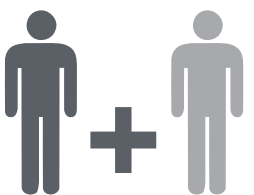
No. 2 Phillips Screwdriver  
Tip Shown Actual Size



To avoid damage, ensure screws are hand tightened. **DO NOT USE POWER TOOLS TO ASSEMBLE YOUR UNIT**



Hammer

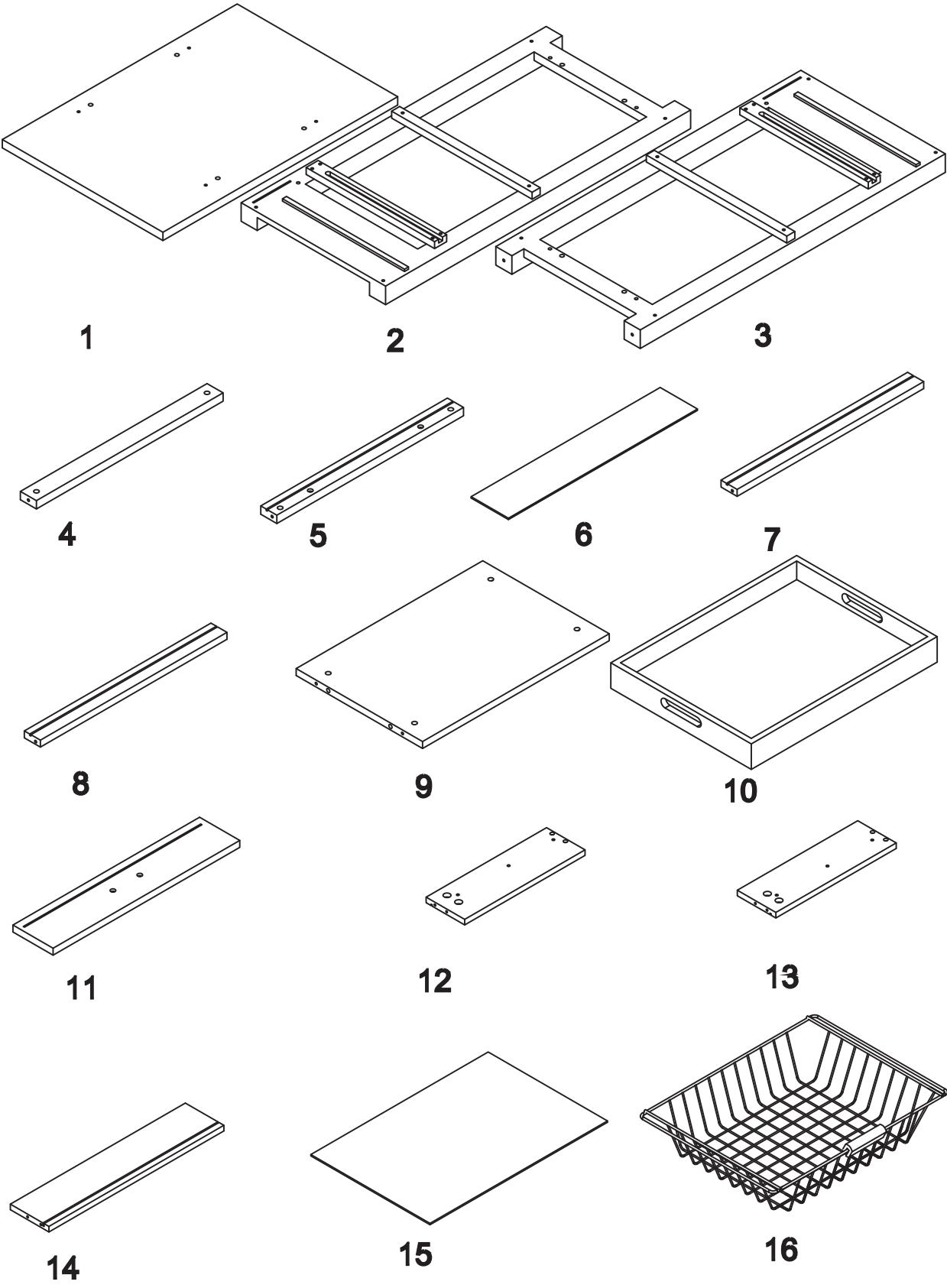


2 people

PARTS LIST

ITEM	DESCRIPTION	QUANTITY
1	Top Panel	1
2	Left End	1
3	Right End	1
4	Top Support Rail Front	1
5	Top Support Rail Back	1
6	Back Panel	1
7	Back Support Rail	1
8	Bottom Support Rails	2
9	Bottom Base	1
10	Middle Tray	1
11	Drawer Front	1
12	Drawer Left	1
13	Drawer Right	1
14	Drawer Back	1
15	Drawer Bottom	1
16	Basket	1

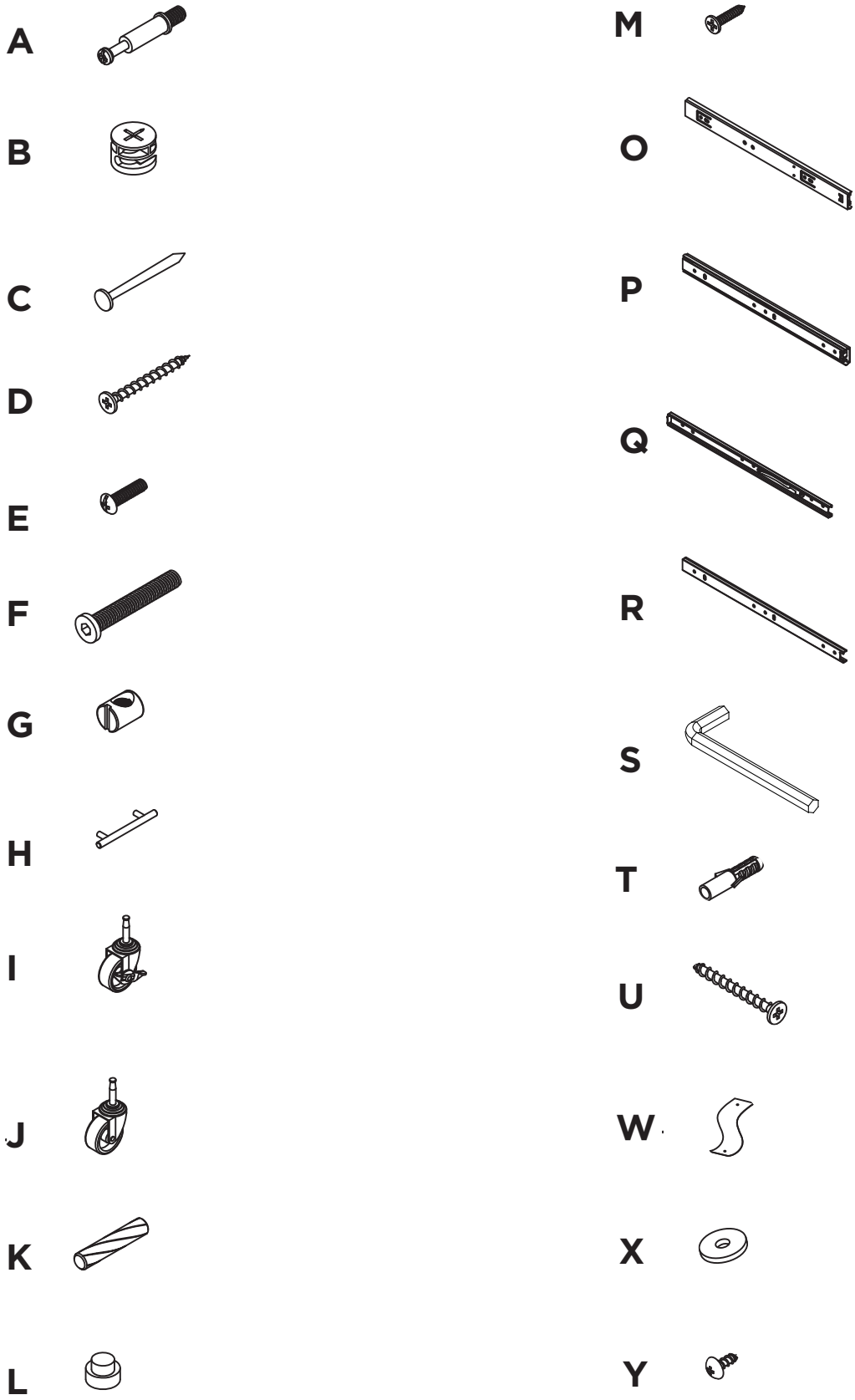
EXPLODED VIEW



PARTS LIST

ITEM	DESCRIPTION	QUANTITY
A	Cam Bolts	8
B	Hidden Cams	8
C	Metal Stoppers	2
D	Flat Head Screws	8
E	Handle Bolts	2
F	Bolts	8
G	Barrel Nuts	8
H	Drawer Handle	1
I	Locking Wheels	2
J	Wheels	2
K	Wood Dowels	12
L	Wood Plugs	8
M	Screws	12
O	Right Extension Rail	1
P	Left Extension Rail	1
Q	Left Extension Slide	1
R	Right Extension Slide	1
S	Spanner	1
T	Expansion Screws	2
U	Flat Head Screws	2
W	Anti-Tip Restraints	2
X	Washers	4
Y	Short Pan Head Screws	2

EXPLODED VIEW



## STEP-BY-STEP INSTRUCTIONS

### STEP 1

REQUIRES D, 1, 4, 5

NOTE: Two people are needed to build this unit.

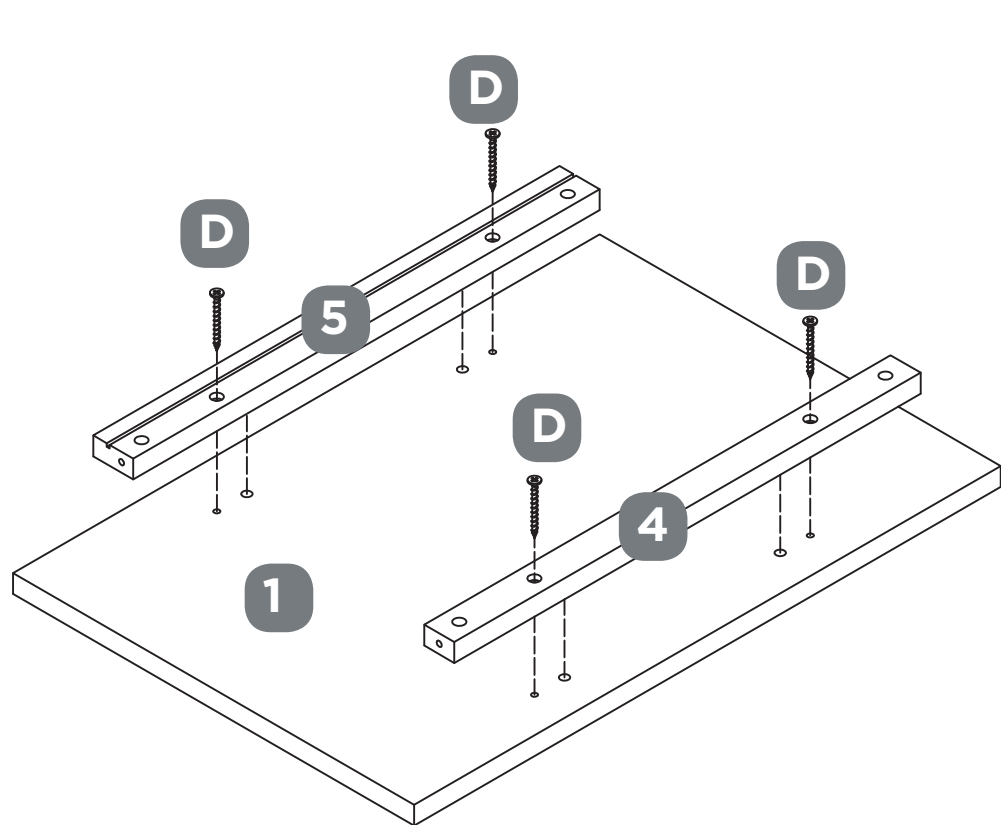
Fasten Top SUPPORT RAIL BACK (4) to the TOP PANEL (1), using two FLAT HEAD SCREWS (D).

Hand tighten two FLAT HEAD SCREWS.

Fasten TOP SUPPORT RAIL BACK (5) to the TOP PANEL (1), using two FLAT HEAD SCREWS (D).

Hand tighten two FLAT HEAD SCREWS.

NOTE: Ensure all SCREWS are tightened.



### STEP 2

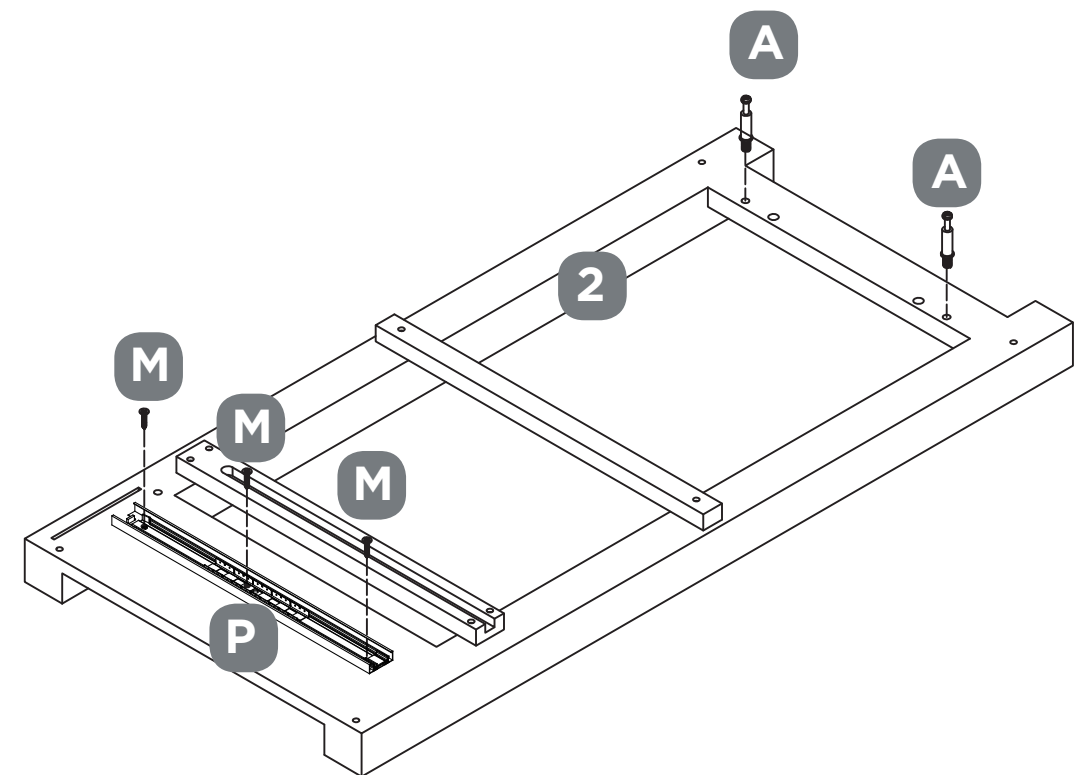
REQUIRES A, M, P, 2

Fasten the LEFT EXTENSION RAIL (P) to the LEFT END (2), using three SCREWS (M).

Hand tighten three SCREWS.

Insert two CAM BOLTS (A) into the LEFT END (2).

Hand tighten two CAM BOLTS (A).



## STEP-BY-STEP INSTRUCTIONS

### STEP 3

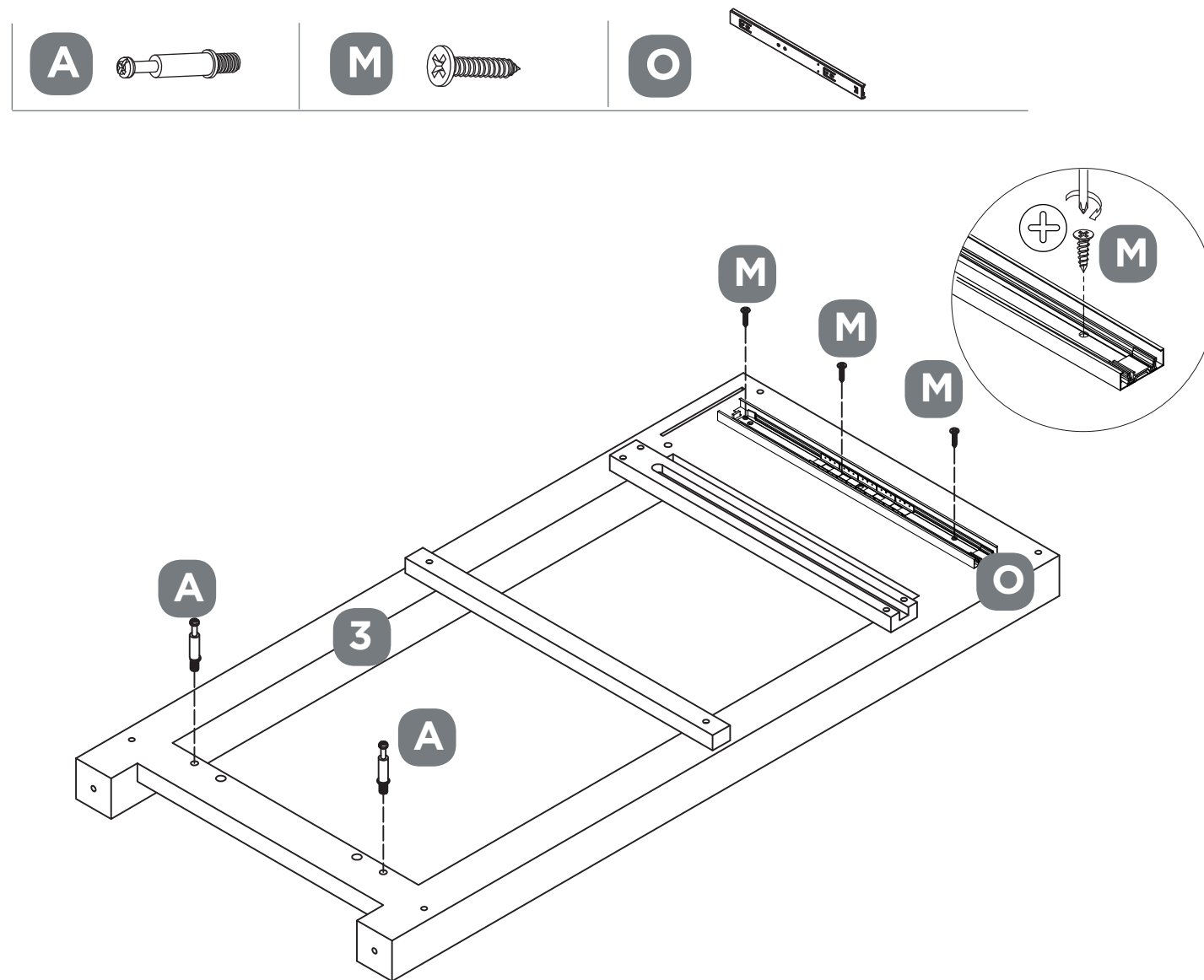
REQUIRES A, M, O, 3

Fasten the RIGHT EXTENSION RAIL (O) to the RIGHT END (3), using three SCREWS (M).

Hand tighten three SCREWS.

Insert two CAM BOLTS (A) into the RIGHT END (3).

Hand tighten two CAM BOLTS (A).



### STEP 4

REQUIRES A, E, H, 11

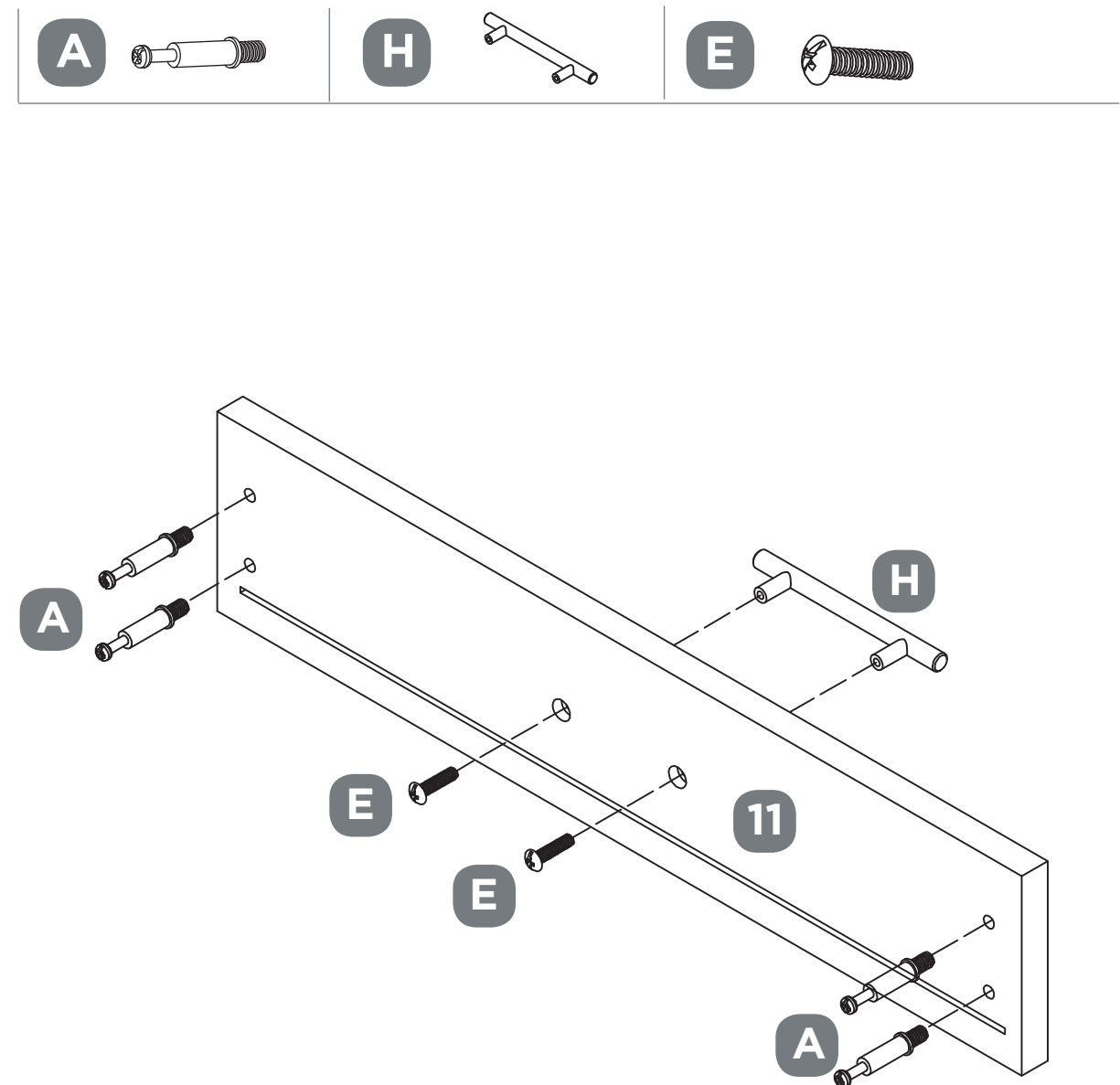
Fasten DRAWER HANDLE (H) to DRAWER FRONT (11), using two HANDLE BOLTS (E).

Hand tighten two HANDLE BOLTS.

Insert four CAM BOLTS (A) into DRAWER FRONT (11).

Hand tighten four CAM BOLTS (A).

NOTE: Ensure two HANDLE BOLTS are tightened.



## STEP-BY-STEP INSTRUCTIONS

### STEP 5

REQUIRES F, G, K, 3, 4, 5, 7,

Insert a BARREL NUT (G) into TOP SUPPORT RAIL FRONT (4).

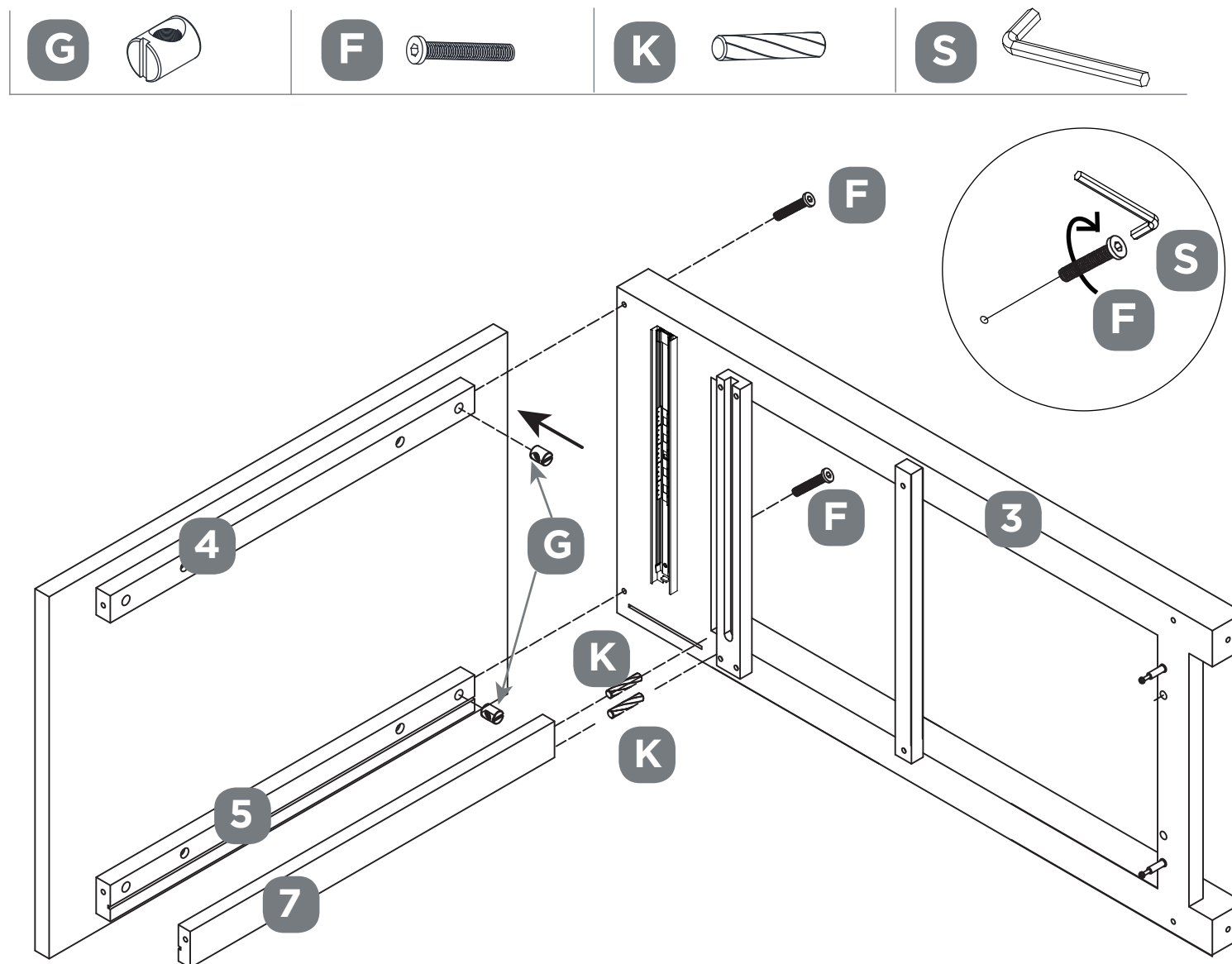
Insert a BARREL NUT (G) into TOP SUPPORT RAIL BACK (5).

Fasten TOP SUPPORT RAIL FRONT (4) and TOP SUPPORT RAIL BACK (5) to the RIGHT END (3), using two BOLTS (F).

Hand tighten two BOLTS.

Insert two WOOD DOWELS (K) into the BACK SUPPORT RAIL (7). Fasten it to the RIGHT END (3), using a BOLT (F).

Hand tighten the BOLT.



### STEP 6

REQUIRES B, F, G, K, 3, 8, 9

Fasten two BOTTOM SUPPORT RAILS (8) to the BOTTOM BASE (9).

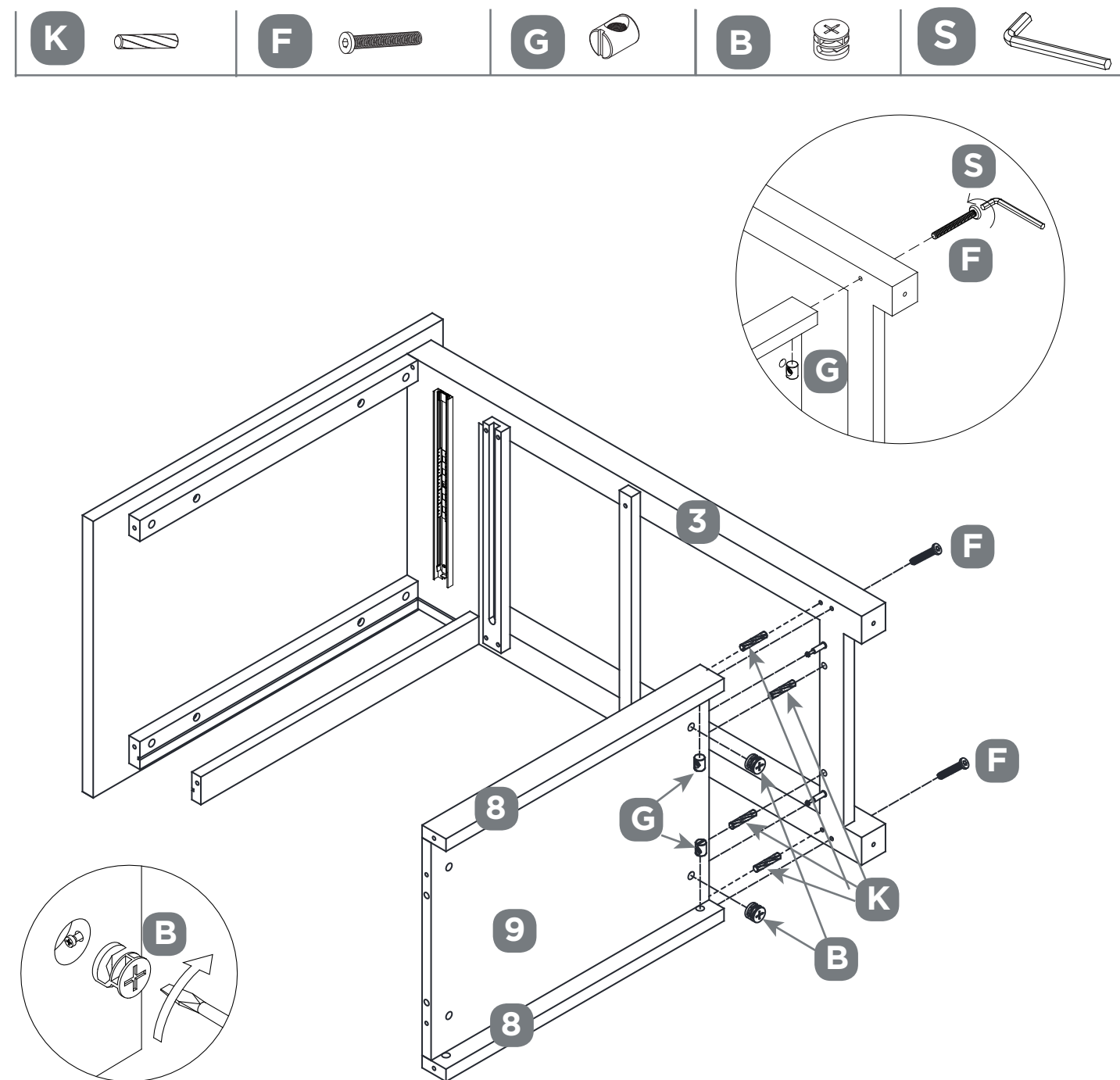
Insert two WOOD DOWELS (K) and two HIDDEN CAMS (B) into the BOTTOM BASE (9).

Insert two BARREL NUTS (G) into the bottom of the BOTTOM SUPPORT RAILS (8).

Insert two WOOD DOWELS (K) into the BOTTOM SUPPORT RAILS (8).

Fasten above to the RIGHT END (3), using two BOLTS (F).

Hand tighten two HIDDEN CAMS (B).



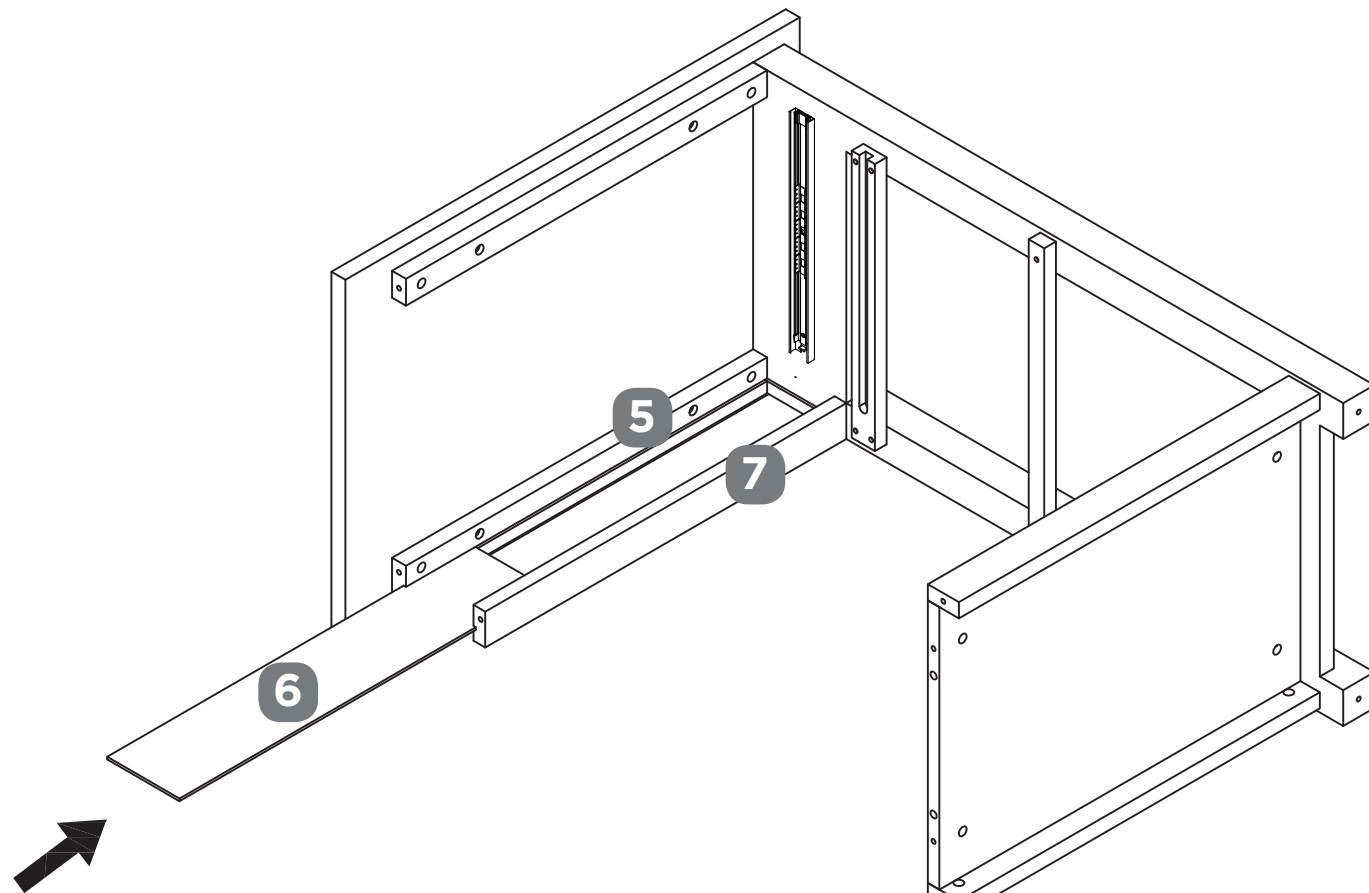


## STEP-BY-STEP INSTRUCTIONS

### STEP 7

REQUIRES 5, 6, 7

Insert the BACK PANEL (6) into the groove between the TOP SUPPORT RAIL BACK (5) and BACK SUPPORT RAIL (7).



### STEP 8

REQUIRES B, F, K, G, 2, 4, 5, 7, 8, 9

Insert a BARREL NUT (G) into TOP SUPPORT RAIL FRONT (4).

Insert a BARREL NUT (G) into TOP SUPPORT RAIL BACK (5).

Insert two WOOD DOWELS (K) into the BACK SUPPORT RAIL (7).

Insert two WOOD DOWELS (K) into the BOTTOM SUPPORT RAILS (8).

Fasten two BOTTOM SUPPORT RAILS (8) to the BOTTOM BASE (9).

Insert two WOOD DOWELS (K) and 2 HIDDEN CAMS (B) into the BOTTOM BASE (9).

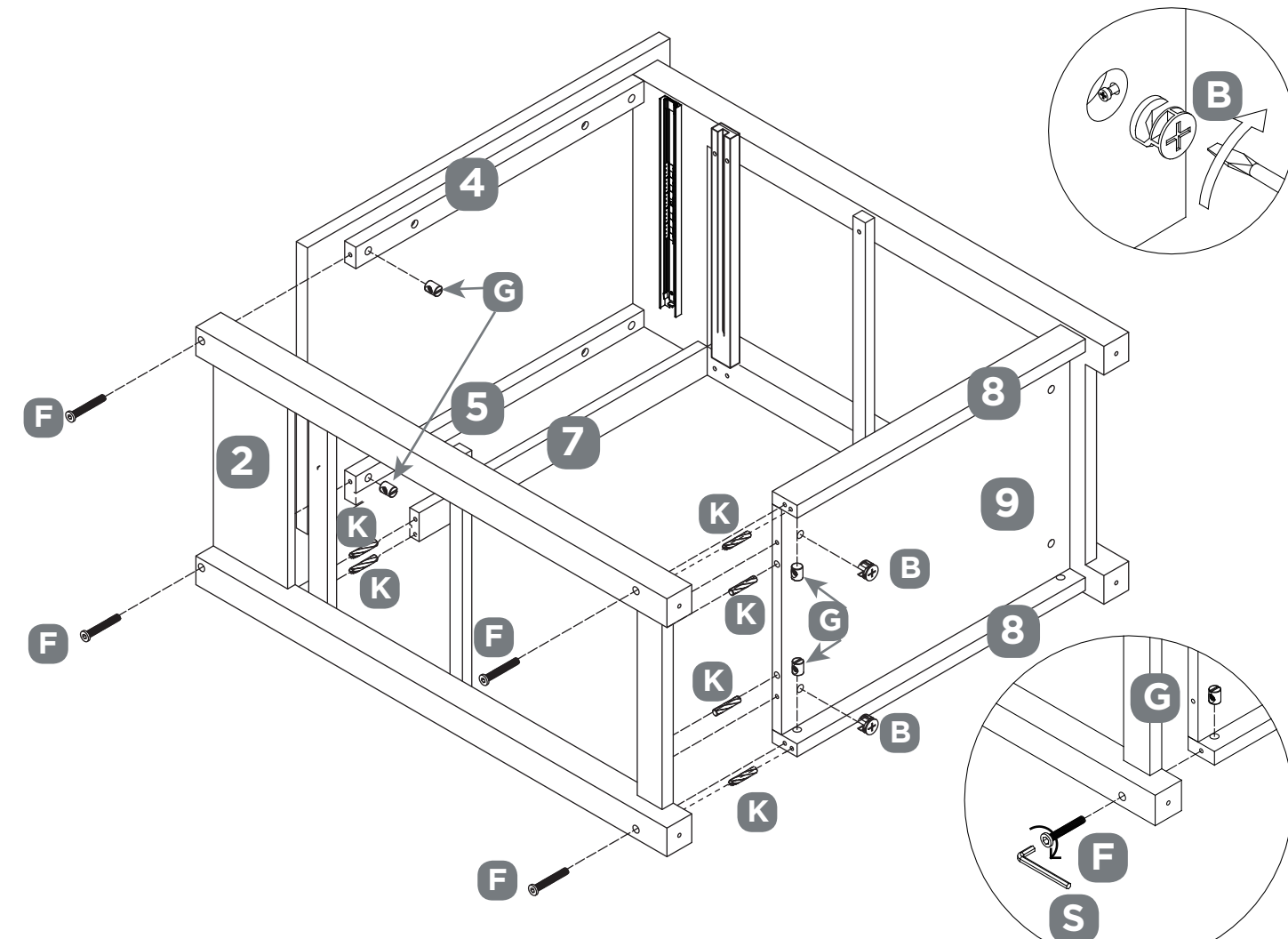
Insert two BARREL NUTS (G) inside the bottom of BOTTOM SUPPORT RAILS (8).

Fasten TOP SUPPORT RAIL FRONT (4) and TOP SUPPORT RAIL BACK (5) to the LEFT END (2), using two BOLTS (F).

Fasten BACK SUPPORT RAIL (7) to LEFT END (2) using two WOOD DOWELS (K).

FASTEN BOTTOM SUPPORT RAILS (8) to the LEFT END using two BOLTS (F).

Hand tighten all BOLTS.





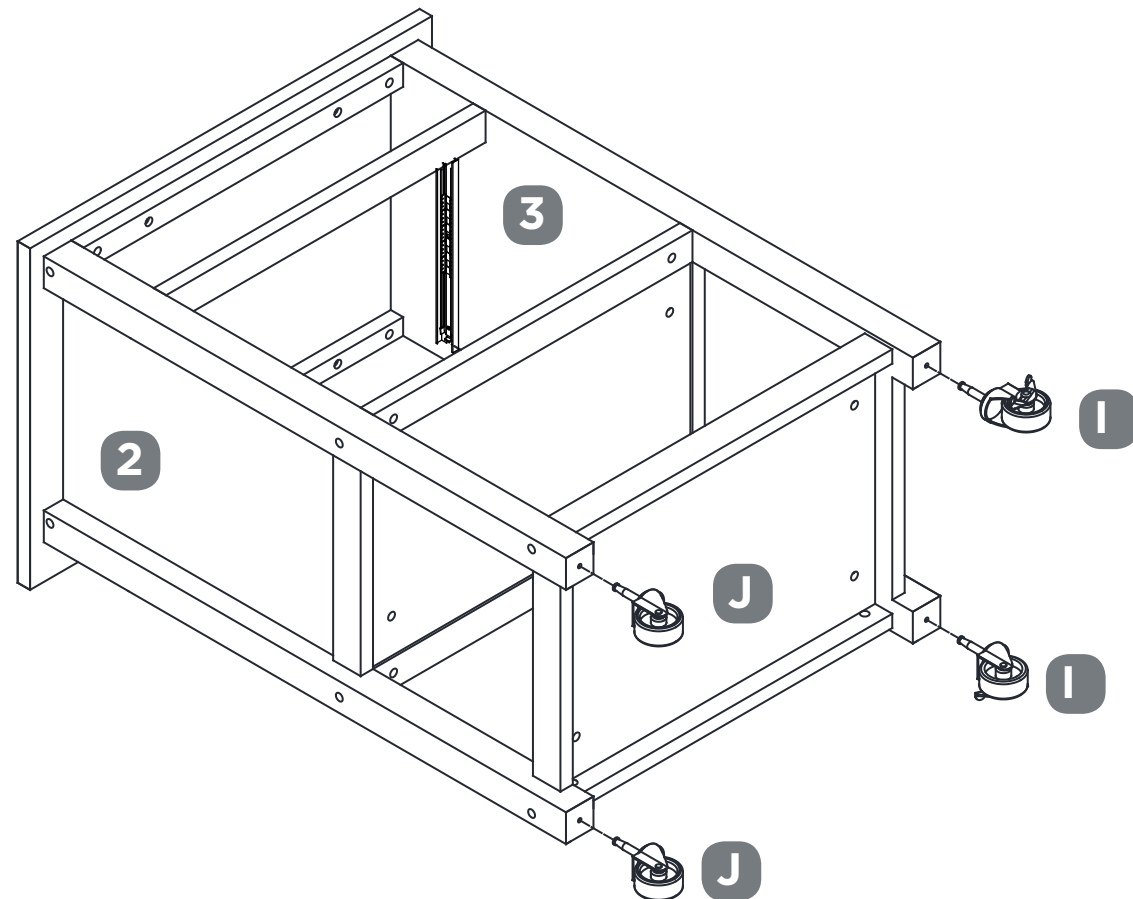
## STEP-BY-STEP INSTRUCTIONS

### STEP 9

REQUIRES I, J

Identify two LOCKING WHEELS (I) and two WHEELS (J) for the specific legs.

Next, affix each wheel by inserting the stem of wheel completely into the pre-drilled hole on each leg.



### STEP 10

REQUIRES D, 12, 13, 14, 15

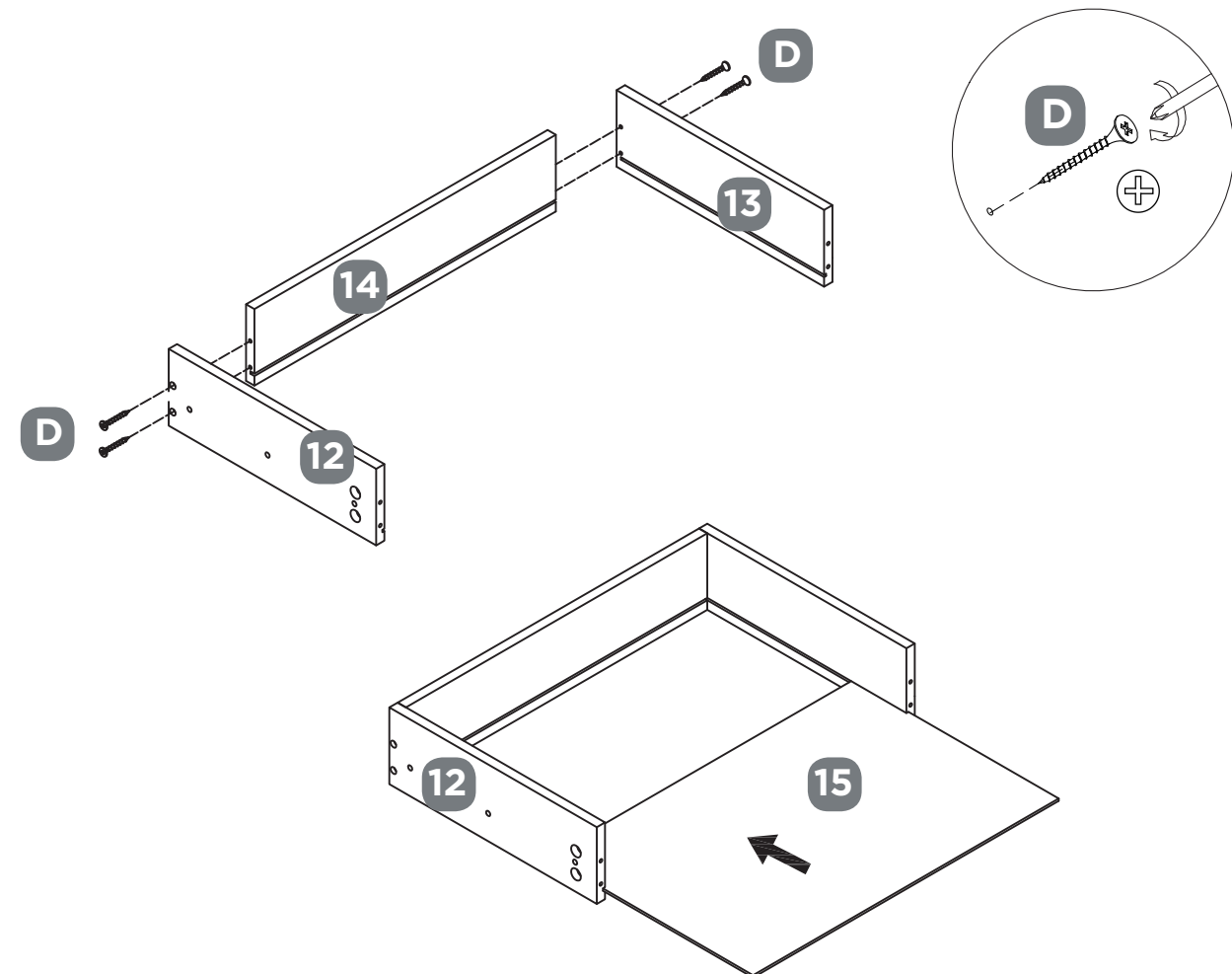
Fasten DRAWER LEFT (12) to DRAWER BACK (14), using two FLAT HEAD SCREWS (D).

Hand tighten two FLAT HEAD SCREWS.

Fasten DRAWER RIGHT (13) to DRAWER BACK (14), using two FLAT HEAD SCREWS (D).

Hand tighten two FLAT HEAD SCREWS.

Insert DRAWER BOTTOM (15) into the groove between DRAWER LEFT (12) and DRAWER RIGHT (13).



## STEP-BY-STEP INSTRUCTIONS

### STEP 11

REQUIRES B, Q, R, M, 11, 12, 13

Fasten DRAWER FRONT (11) to the DRAWER LEFT (12) and DRAWER RIGHT (13), using four HIDDEN CAMS (B).

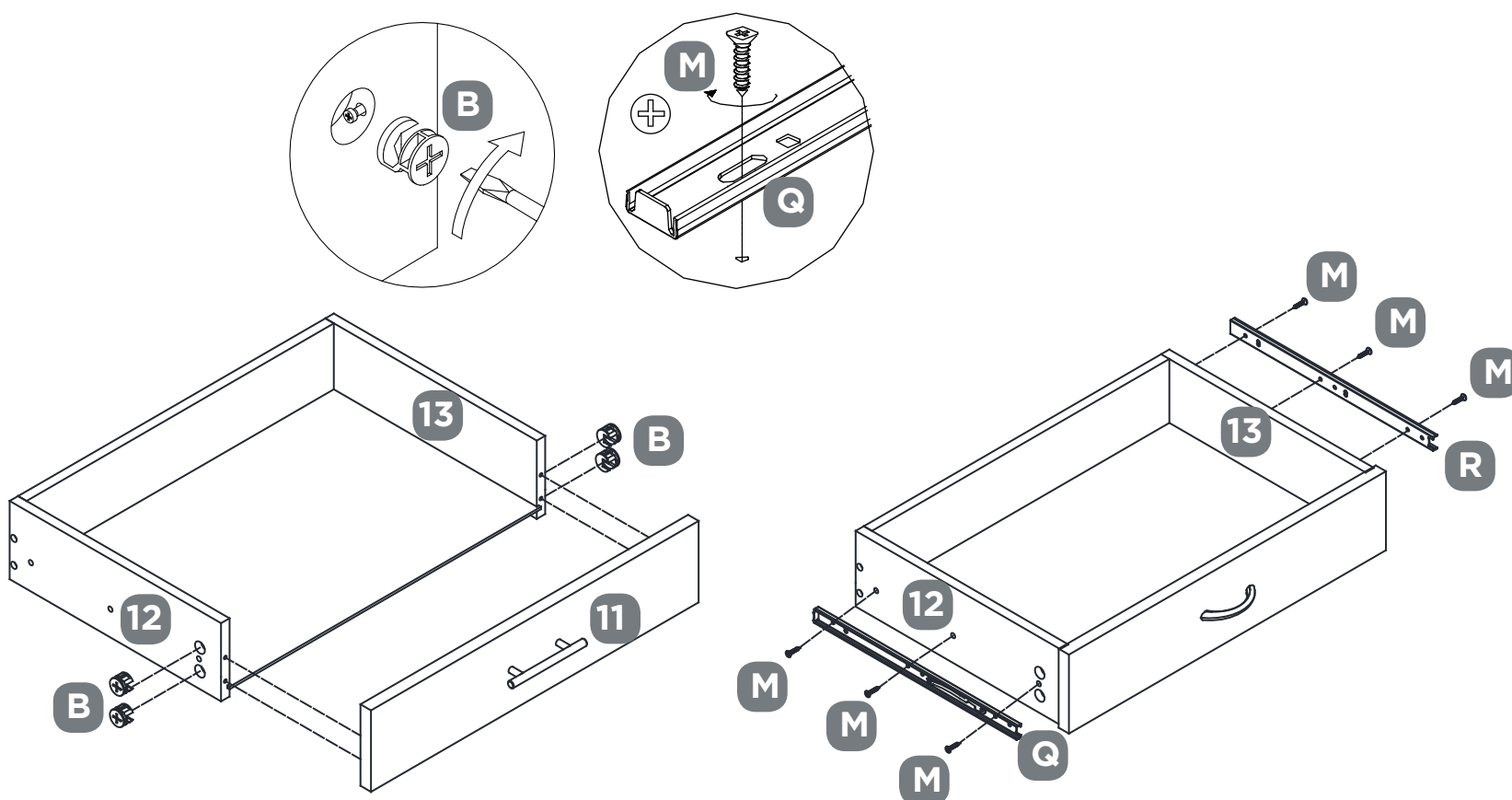
Hand tighten four HIDDEN CAMS.

Fasten LEFT EXTENSION SLIDE (Q) to the DRAWER LEFT (12), using three SCREWS (M).

Hand tighten three SCREWS.

Fasten RIGHT EXTENSION SLIDE (R) to the DRAWER RIGHT (13), using three SCREWS (M).

Hand tighten three SCREWS.



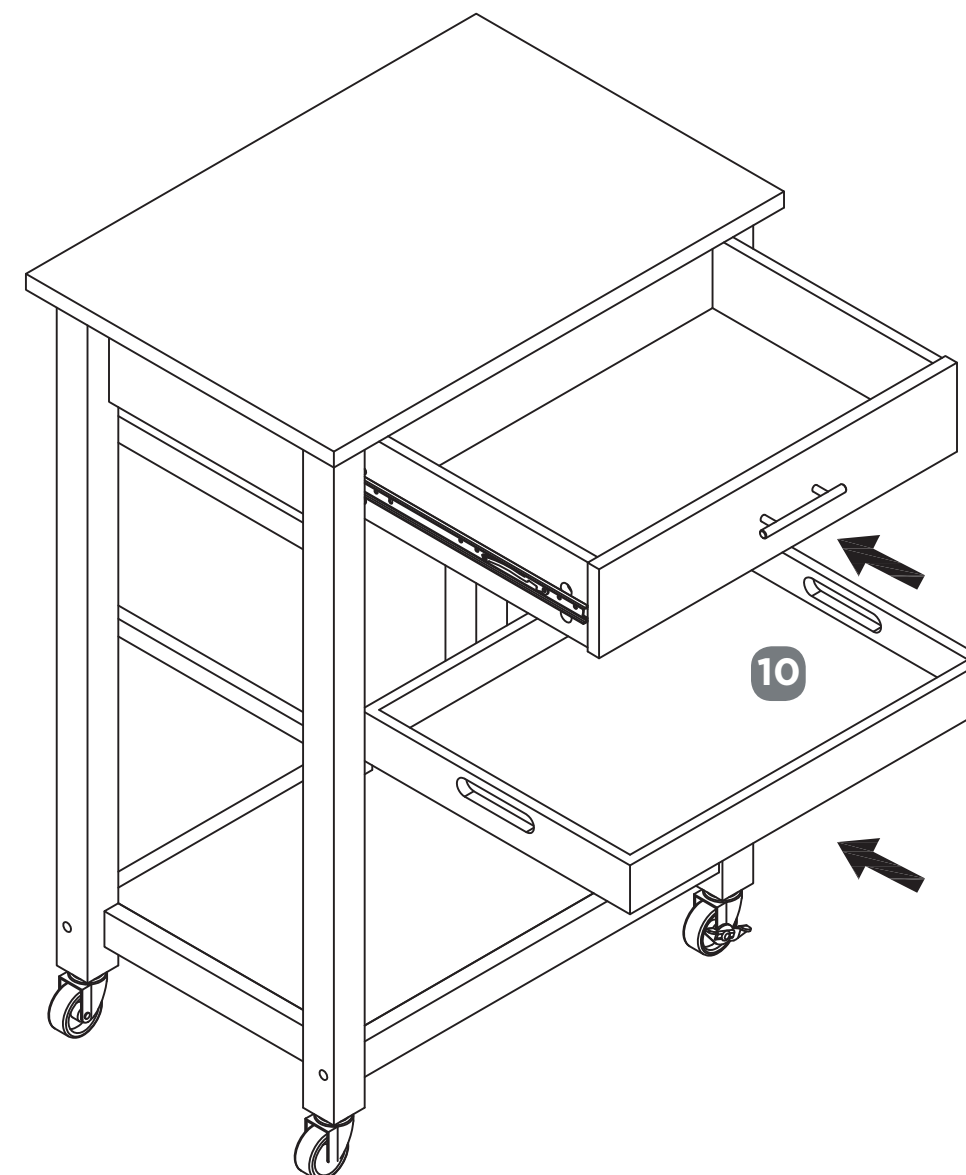
### STEP 12

REQUIRES 10

Carefully stand the unit upright and place in your desired location.

Insert the drawer into the unit by lining up the extension slides on the drawer with the extension rails on the unit.

Insert the MIDDLE TRAY (10) into the SUPPORT RAIL.



## STEP-BY-STEP INSTRUCTIONS

### STEP 13

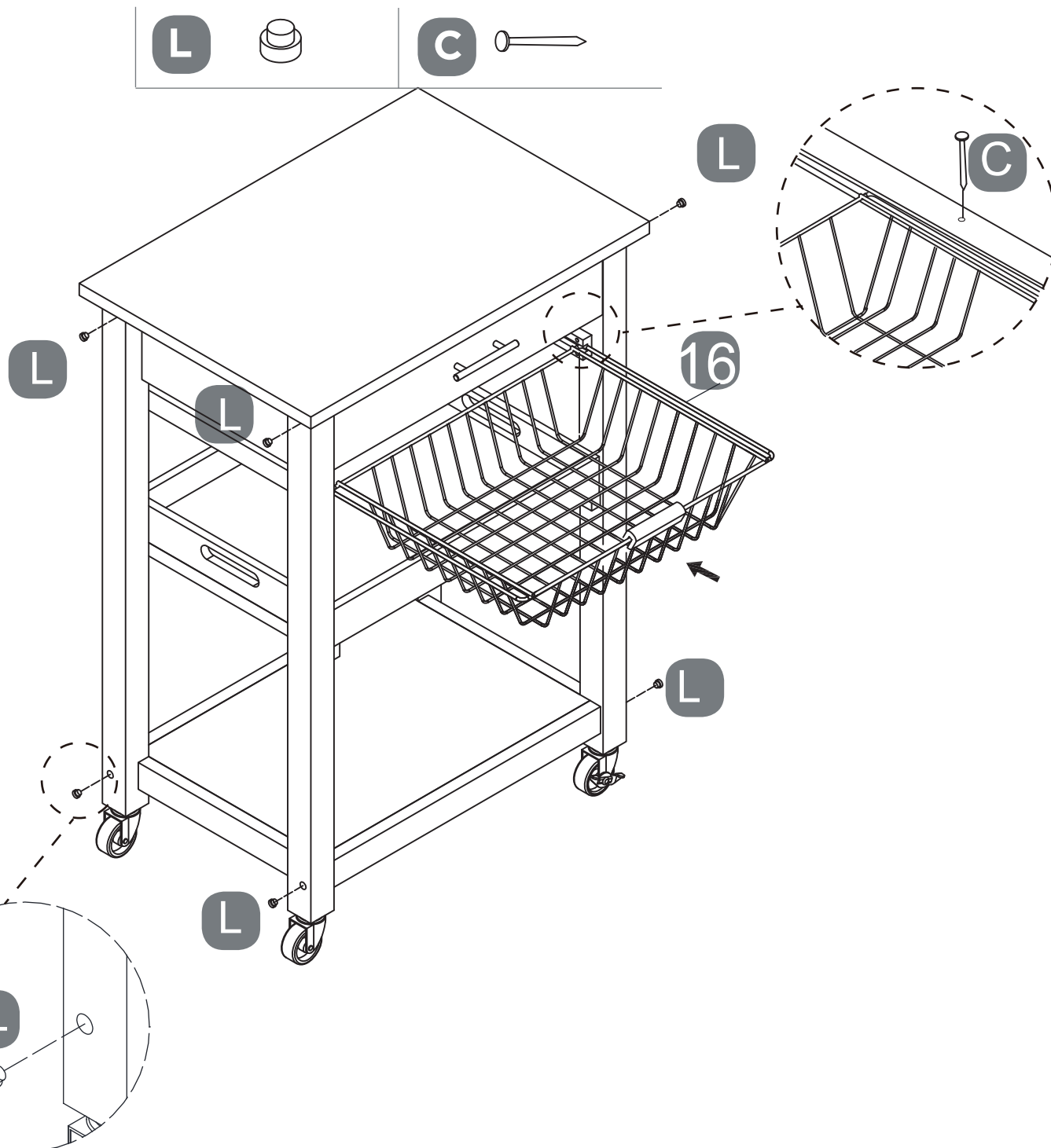
REQUIRES L,C,16

Insert the BASKET (16) into the Rail.

Insert two METAL STOPPERS (C) into the holes at the top of rail as shown.

Insert eight WOOD PLUGS (L) into the Cam Lock holes.

This completes assembly.



### STEP 14

REQUIRES T, U, W, X, Y

Carefully stand your unit upright and place in its final location.

To reduce the risk of Tip-over, we suggest to use ANTI-TIP RESTRAINTS (provided).

Fasten two ANTI-TIP RESTRAINTS (W) to two LEGS on the back separately.

Fasten two WASHERS (X) to the ANTI-TIP RESTRAINTS (W), using two SHORT PAN HEAD SCREWS (Y).

Using ANTI-TIP RESTRAINTS as a guide, mark 2 spots on the wall.

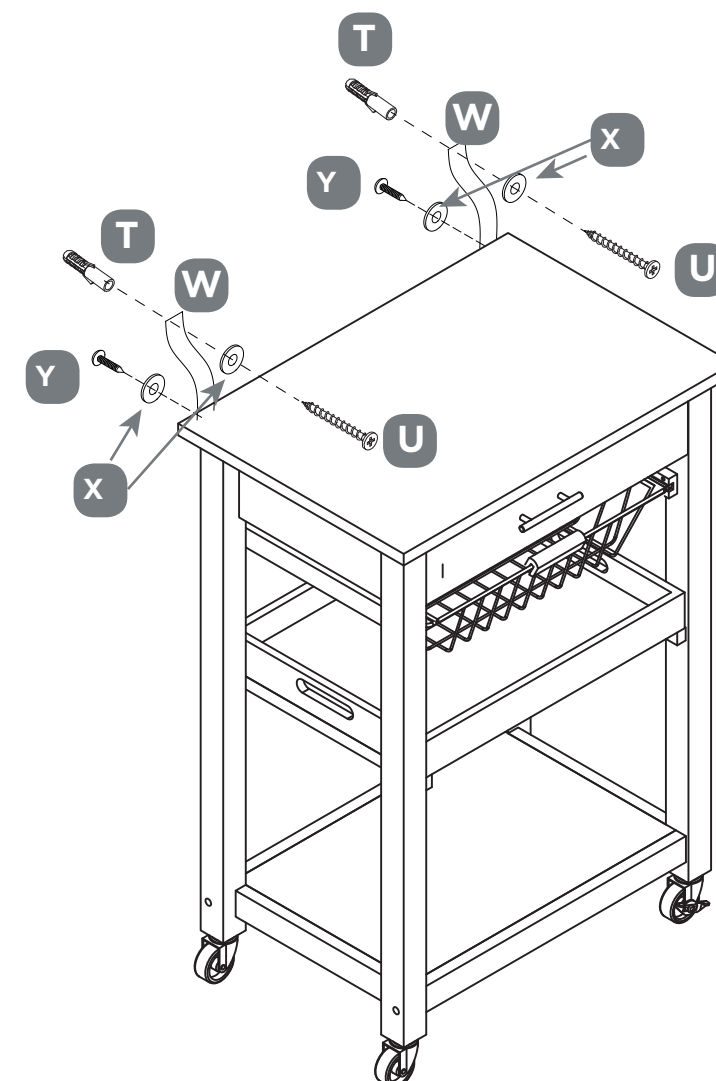
Insert two EXPANSION SCREWS (T) into the wall.

Hammer EXPANSION SCREWS into the wall.

Fasten two FLAT HEAD SCREWS (U) into the EXPANSION SCREWS through two WASHERS (X).

Hand tighten two FLAT HEAD SCREWS (U).

This completes assembly.

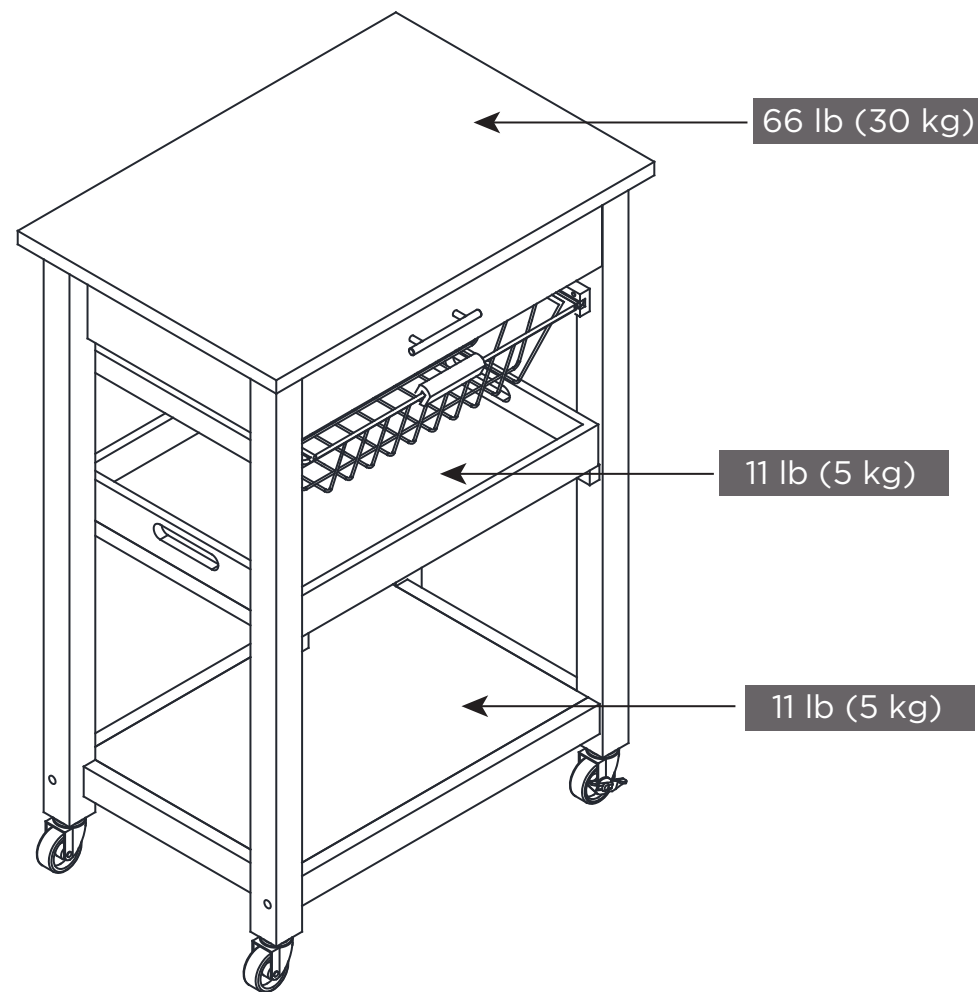


## STEP-BY-STEP INSTRUCTIONS

### MAXIMUM WEIGHT CAPACITY

This unit has been designed to support the maximum loads shown. Exceeding these load limits could cause sagging, instability, product collapse, and/or serious injury.

Please make sure that all the objects are removed before moving the assembled unit.



WARRANTY



1-YEAR LIMITED WARRANTY

This CANVAS™ product carries a one (1) year warranty against defects in workmanship and materials. Trileaf Distribution agrees to replace the defective product free of charge within the stated warranty period, when returned by the original purchaser with proof of purchase. This product is not guaranteed against wear or breakage due to misuse and/or abuse.

MODEL NO. 168-0074-6

Made in China  
Imported by Trileaf Distribution Trifeuil Toronto, Canada M4S 2B8

CARING FOR YOUR ITEM

- 1
- Weight Capacity:
  - Do not exceed maximum weight capacity of 66 lb (30 kg) on top.
  - Do not exceed maximum weight capacity of 11 lb (5 kg) on drawer.
  - Do not exceed maximumweight capacity of 11 lb (5 kg) on shelf.
  - Do not exceed maximum weight capacity of 11 lb (5 kg) on middle tray.

- 2
- Children have died from furniture tip-over. To reduce your risk:
  - Do not stand on, sit on or climb this unit.
  - Do not use as a stool.
  - For indoor use only.
  - Always place the unit on a flat level surface.

- 3
- Wipe clean with a damp cloth.

- 4
- Avoid direct sunlight.

CANVAS™/MC

Exclusively at Canadian Tire

