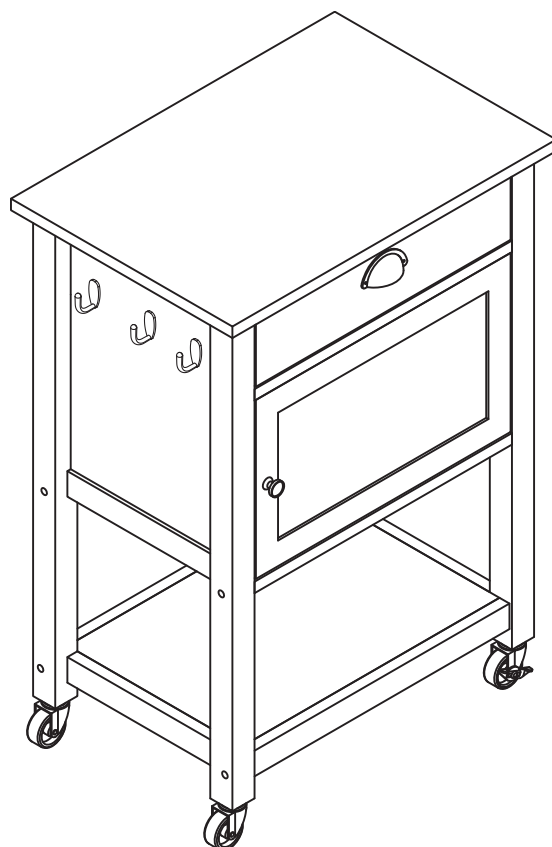


# CANVAS<sup>TM/MC</sup>

## PERTH KITCHEN CART WITH GRANITE TOP

---

MODEL NO. 168-0073-8



## ASSEMBLY INSTRUCTIONS



**HAVING TROUBLE?**

**TOLL-FREE:**

**1-888-670-6684**

# CANVAS<sup>TM/MC</sup>

**We believe** the power of decor and how it makes up the fabric of your home.

That's why the **CANVAS** assortment gets its inspiration from Canadians and the way they live.

From on-trend furniture pieces, to Holiday Decor and Outdoor Living, **CANVAS** makes it easy to refresh your space to reflect **your unique style and the way you live.**

**We welcome** your thoughtful comments and feedback so please visit our website to tell us about your experience.

We would love to see how you bring **CANVAS** to life. Please share your photos using **#mycanvasstyle.**

## TABLE OF CONTENTS

Parts List/ Exploded View .....	4
Step-by-Step Instructions .....	8
Warranty .....	25
Caring for your item .....	25



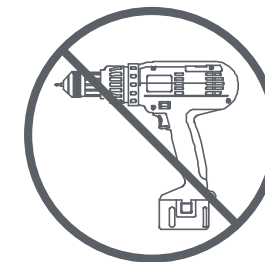
WARNING! TO REDUCE THE RISK OF SERIOUS INJURY, READ THE FOLLOWING SAFETY INSTRUCTIONS BEFORE ASSEMBLING AND USING THE KITCHEN CART.

- This product is intended for domestic indoor use only.
- The product should be placed on a flat horizontal surface.
- Arrange necessary manpower when assembling or moving the product.
- Do not push furniture, especially on a carpeted floor. Have someone help you lift heavy items and set in place.
- Check all screws periodically for tightness. When required, tighten them again.
- Do not exceed maximum weight capacity of 66 lb (30 kg) on top.

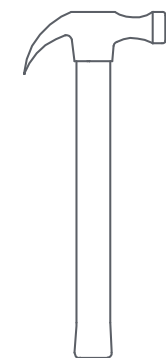
## TOOLS REQUIRED



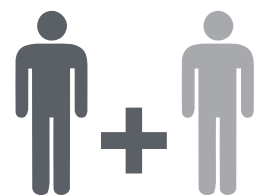
No. 2 Phillips Screwdriver  
Tip Shown Actual Size



To avoid damage, ensure screws are hand tightened. **DO NOT USE POWER TOOLS TO ASSEMBLE YOUR UNIT**



Hammer

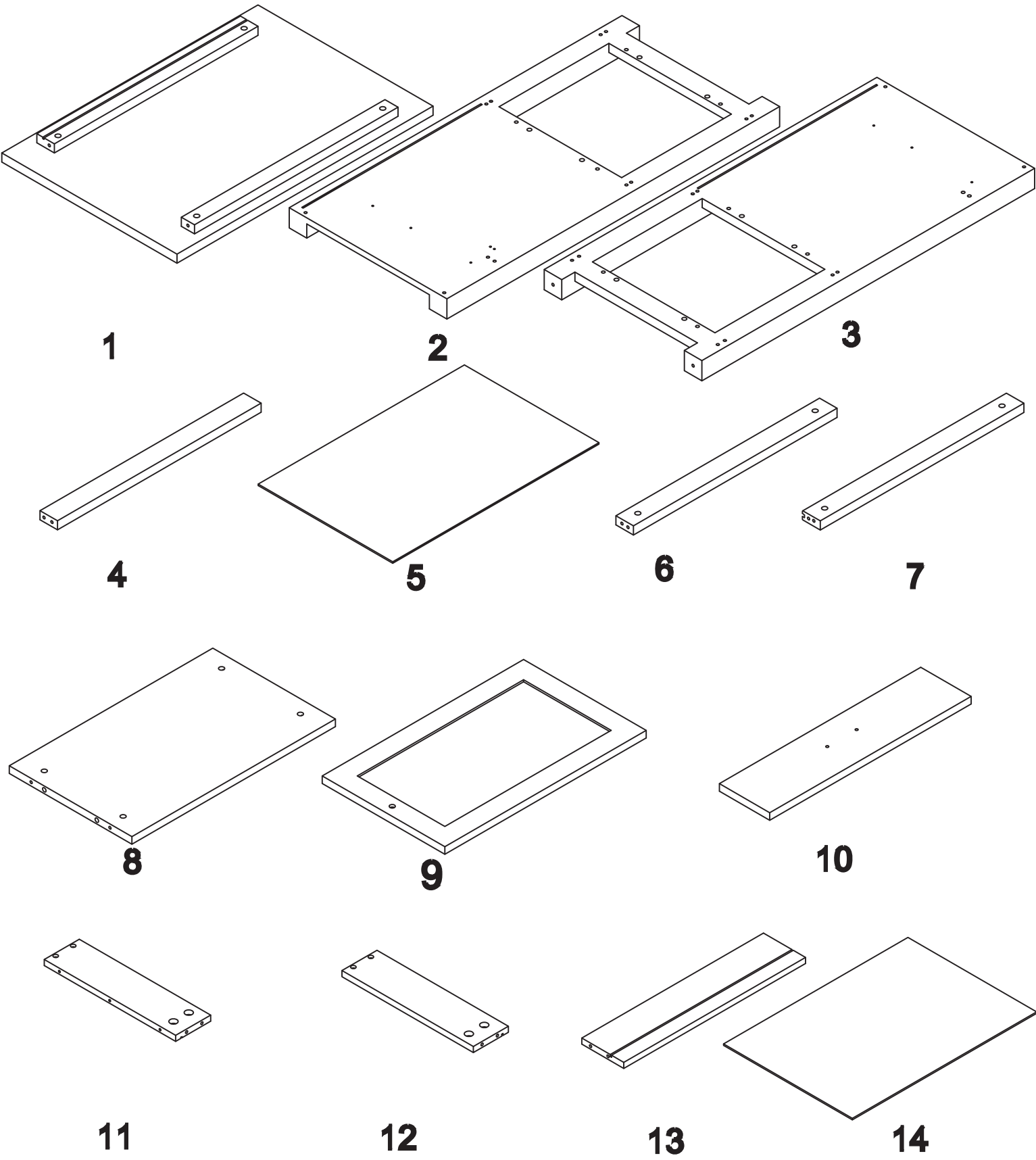


2 people

PARTS LIST

ITEM	DESCRIPTION	QUANTITY
1	Granite Top	1
2	Left End	1
3	Right End	1
4	Drawer Bottom Rail	1
5	Back Panel	1
6	Drawer Bottom Support Rails	3
7	Support Rail	1
8	Base Panels	2
9	Storage Door	1
10	Drawer front	1
11	Drawer Left	1
12	Drawer Right	1
13	Drawer Back	1
14	Drawer Bottom	1

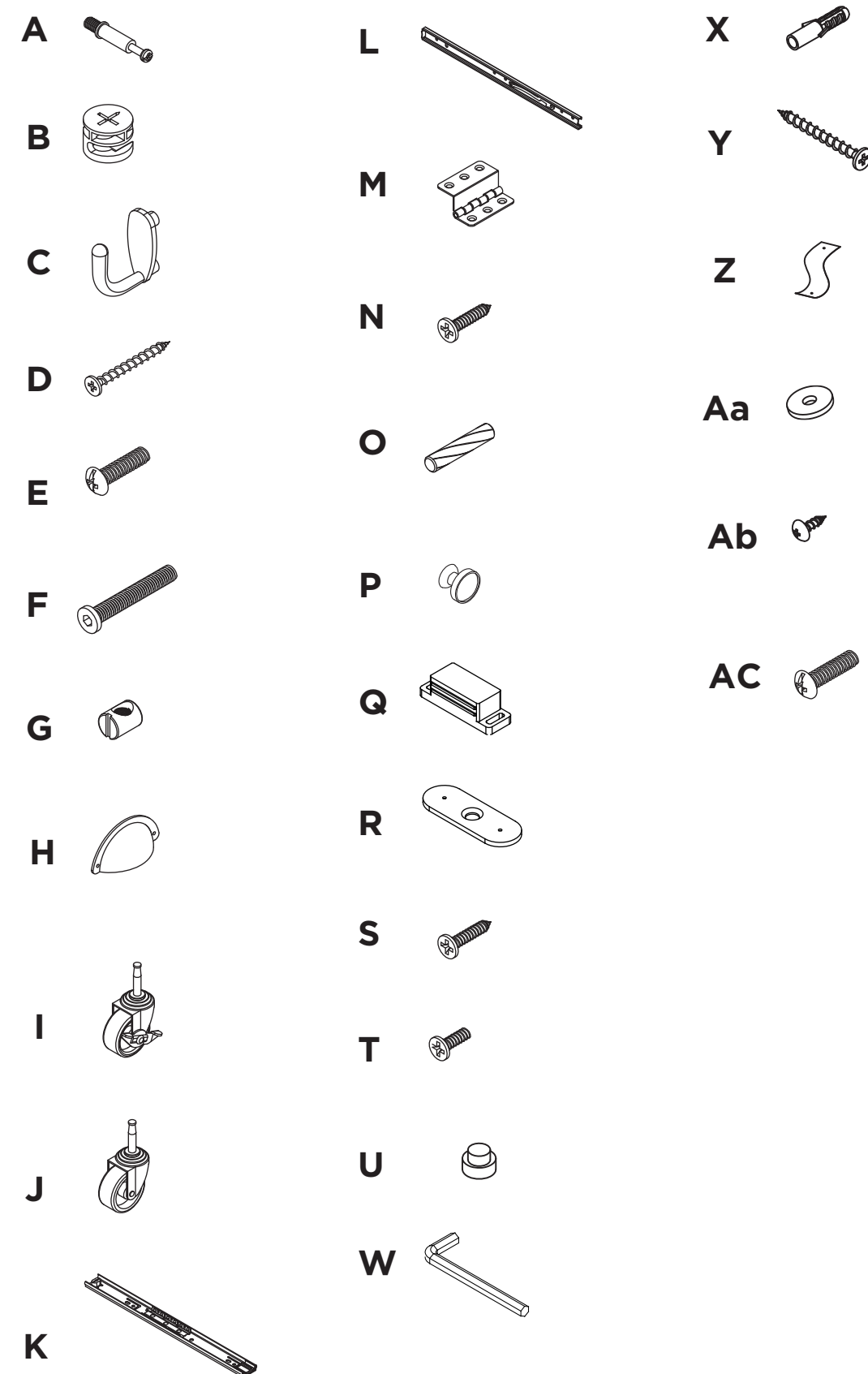
EXPLODED VIEW



## PARTS LIST

ITEM	DESCRIPTION	QUANTITY
A	Cam Bolts	12
B	Hidden Cams	12
C	Hooks	3
D	Flat Head Screws	4
E	Handle Bolt	1
F	Bolts	12
G	Barrel Nuts	12
H	Drawer Handle	1
I	Locking Wheels	2
J	Wheels	2
K	Slide Runners	2
L	Slide Tracks	2
M	Door Hinges	2
N	Screws	12
O	Wood Dowels	20
P	Door Handle	1
Q	Magnetic Catch	1
R	Metal Plate	1
S	Screws	15
T	Hook Bolts	6
U	Wood Plugs	12
W	Spanner	1
X	Expansion Screws	2
Y	Flat Head Screws	2
Z	Anti-tip Restraints	2
Aa	Washers	4
Ab	Short Pan Head Screws	2
Ac	Handle Bolt	2

## EXPLODED VIEW



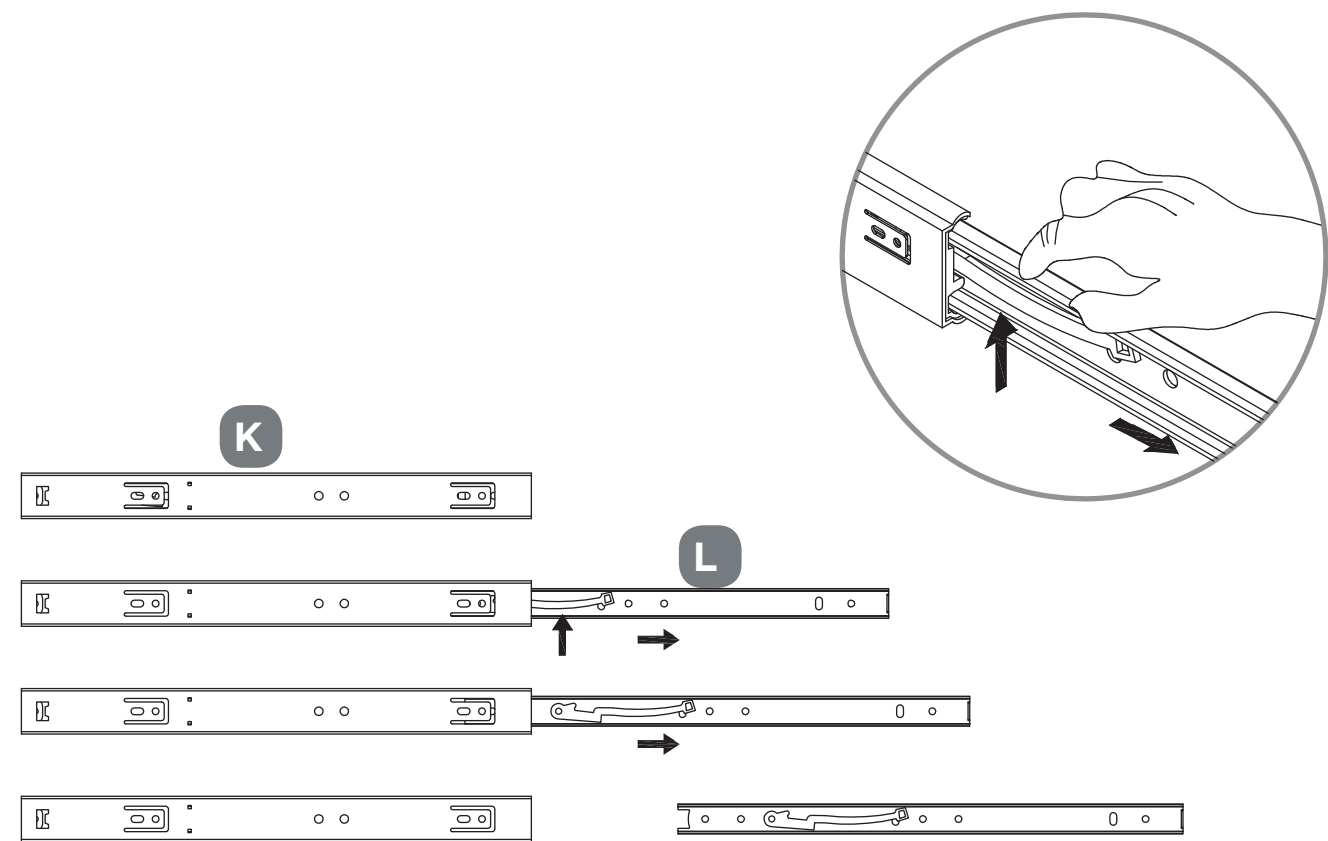
# STEP-BY-STEP INSTRUCTIONS

## STEP 1

REQUIRES L, K

The SLIDE TRACK (L) and the SLIDE RUNNER (K) will need to be separated for assembly. To do so, slide the SLIDE TRACK (L) slightly out from inside the SLIDE RUNNER (K) until the TRIGGER DISCONNECT LEVER is visible.

In the groove of the SLIDE RUNNER (K), press the TRIGGER DISCONNECT LEVER upwards as the same time while sliding the SLIDE TRACK (L) out.



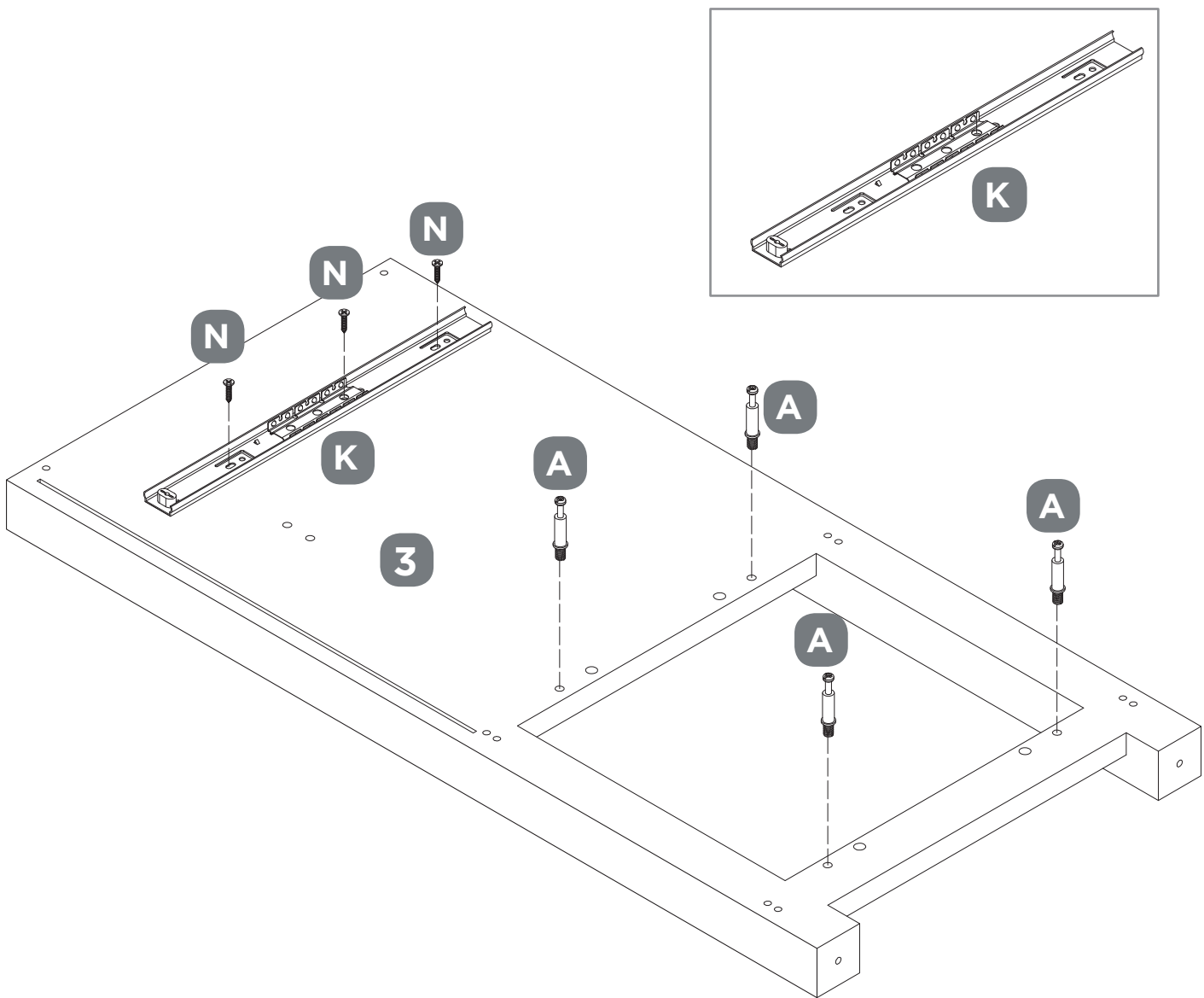
## STEP 2

REQUIRES A, N, K, 3

Fasten one SLIDE RUNNER (K) to the RIGHT END (3), using three SCREWS (N). Hand tighten the SCREWS.

Fasten four CAM BOLTS (A) to the RIGHT END (3).

NOTE: Ensure the screws are tightened.



## STEP-BY-STEP INSTRUCTIONS

### STEP 3

REQUIRES A, K, N, Q, S,C,T,2

Fasten one SLIDE RUNNER (K) to the LEFT END (2), using three SCREWS (N).

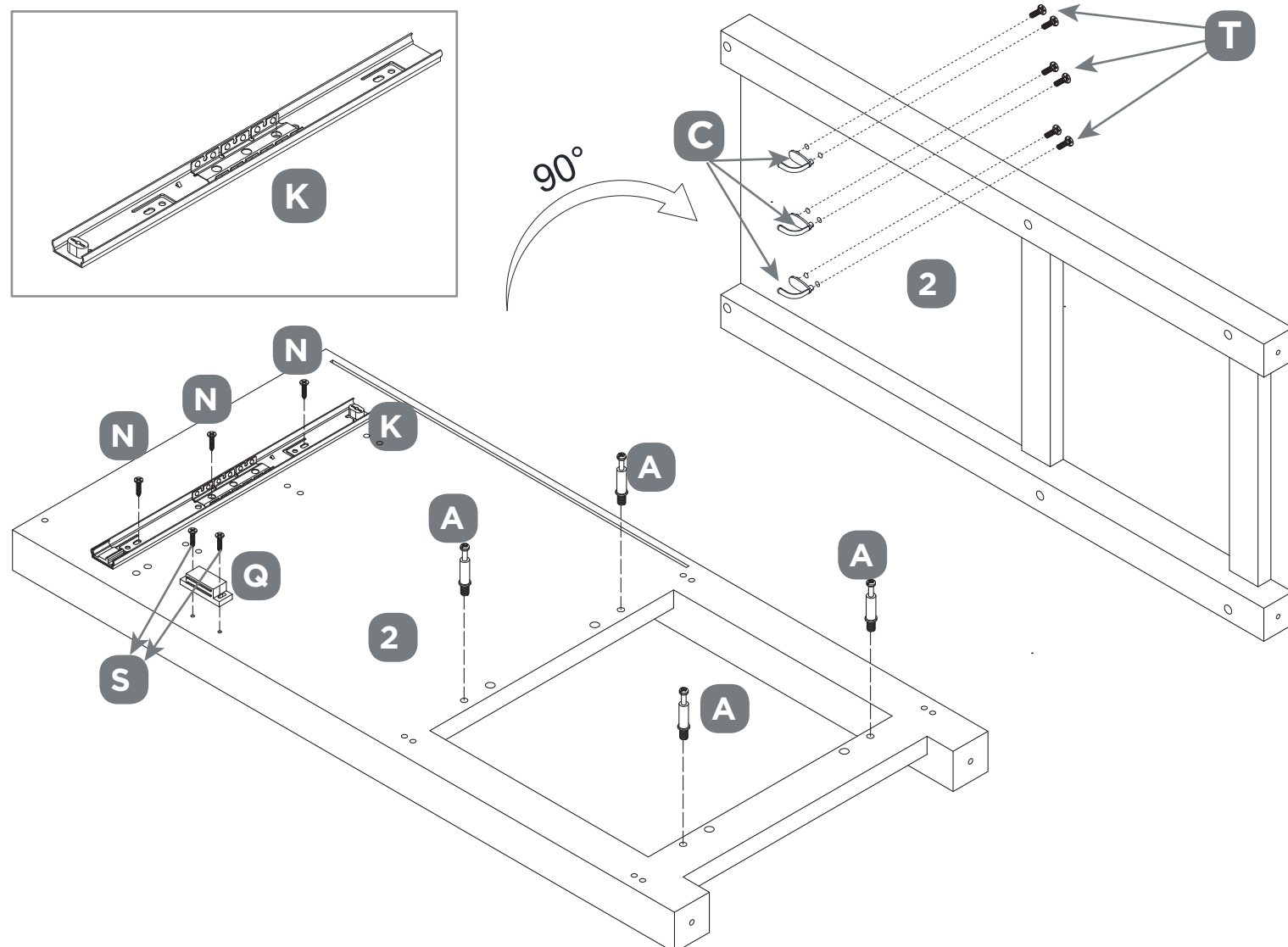
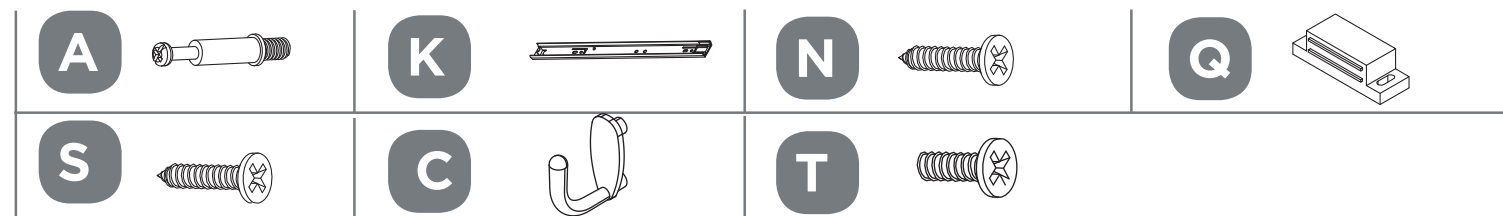
Fasten the MAGNETIC CATCH (Q) to the LEFT END (2), using two SCREWS (S).

Hand tighten the SCREWS.

Fasten four CAM BOLTS (A) to the LEFT END (2).

Lift LEFT END (2) and place on its side. Attach three HOOKS (C) to the LEFT END (2), using six HOOK BOLTS (T). Hand tighten the HOOK BOLTS.

NOTE: Ensure the screws are tightened.



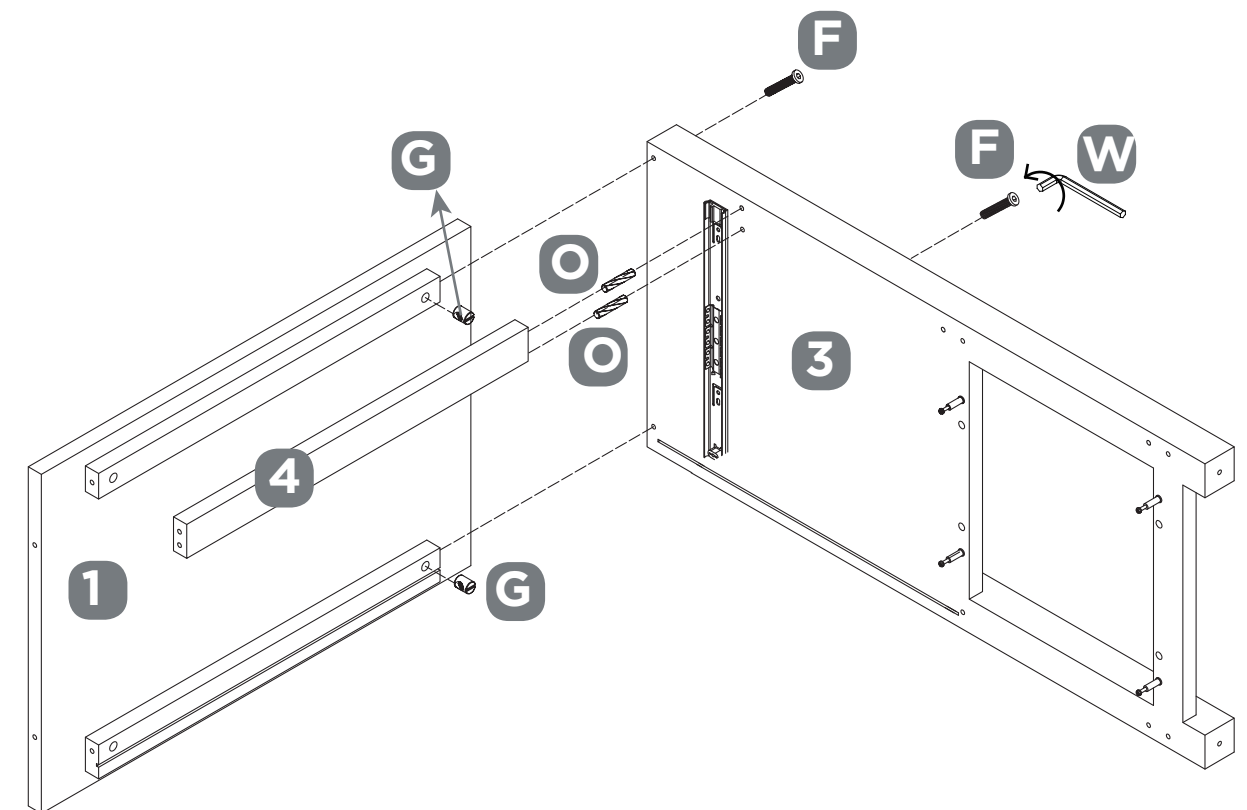
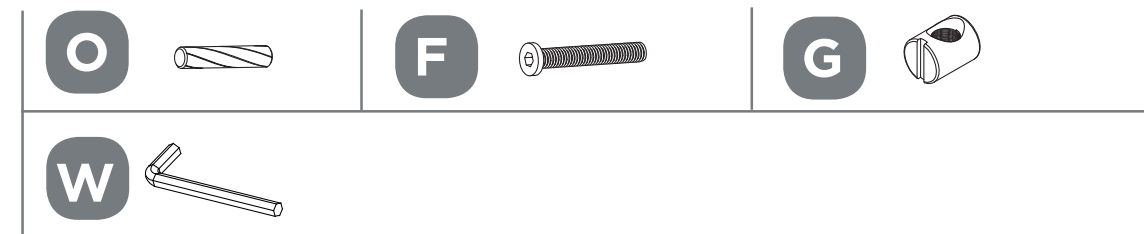
### STEP 4

REQUIRES F, G, O,W, 1, 3, 4

Insert two BARREL NUTS (G) into the granite top support rail as shown.

Insert two WOOD DOWELS (O) into the DRAWER BOTTOM RAIL (4).

Fasten the granite top support rail to the RIGHT END (3), using two BOLTS (F). Hand tighten the BOLTS (F).





## STEP-BY-STEP INSTRUCTIONS

### STEP 5

REQUIRES B, F, G, O, W, 3, 6, 7, 8

Put together DRAWER BOTTOM SUPPORT RAIL (6), BASE PANEL (8) and DRAWER BACK SUPPORT RAIL (7) as shown. No tools are needed at this stage.

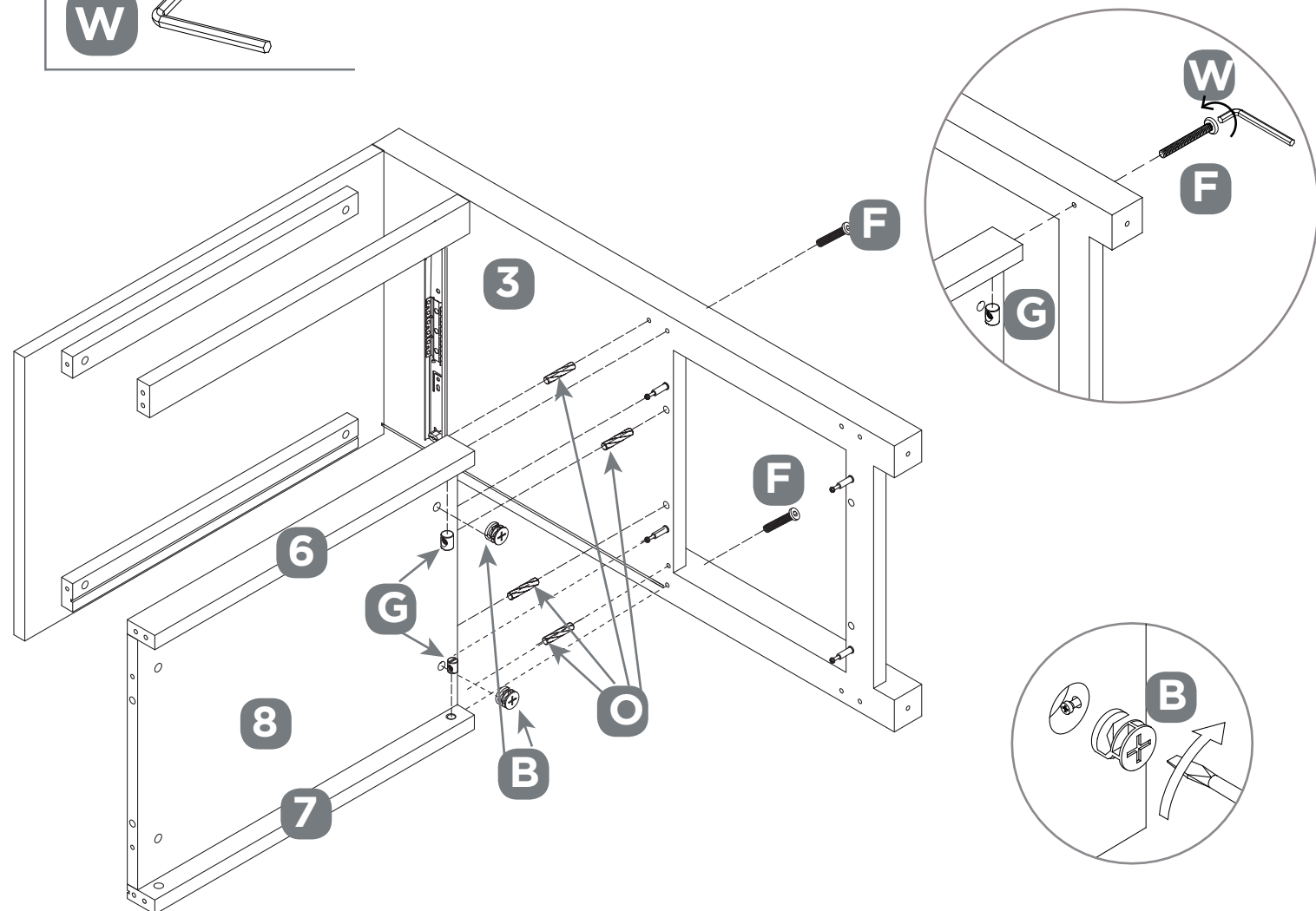
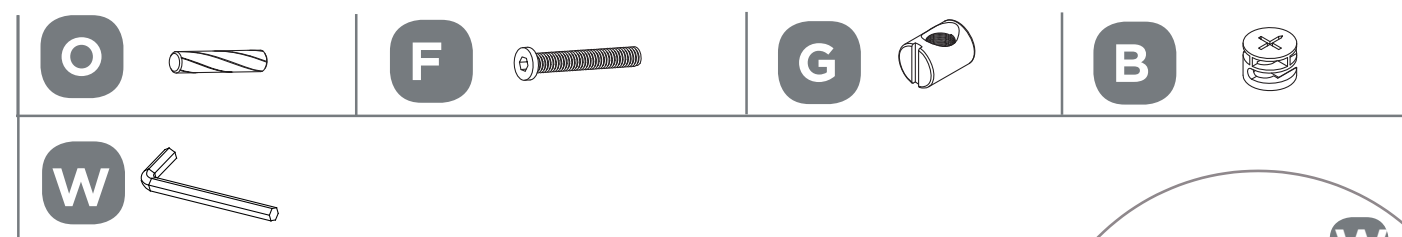
Insert two WOOD DOWELS (O) into the DRAWER BOTTOM SUPPORT RAIL (6) and DRAWER BACK SUPPORT RAIL (7).

Insert two HIDDEN CAMS (B) and two WOOD DOWELS (O) into the BASE PANEL (8) as shown.

Insert two BARREL NUTS (G) inside the bottom end of DRAWER BOTTOM SUPPORT RAIL (6) and DRAWER BACK SUPPORT RAIL (7) as shown.

Fasten the DRAWER BOTTOM SUPPORT RAIL (6), BASE PANEL (8) and DRAWER BACK SUPPORT RAIL (7) to the RIGHT END (3), using two BOLTS (F).  
Hand tighten the BOLTS.

NOTE: Ensure the Hidden Cams (B) and BOLTS (F) are in the exact holes.  
Ensure all BOLTS are hand tightened.



### STEP 6

REQUIRES B, F, G, O, W, 3, 6, 8

Put together two DRAWER BOTTOM SUPPORT RAIL (6) and BASE PANEL (8) as shown. No tools are needed at this stage.

Insert two WOOD DOWELS (O) into the SUPPORT RAIL (6).

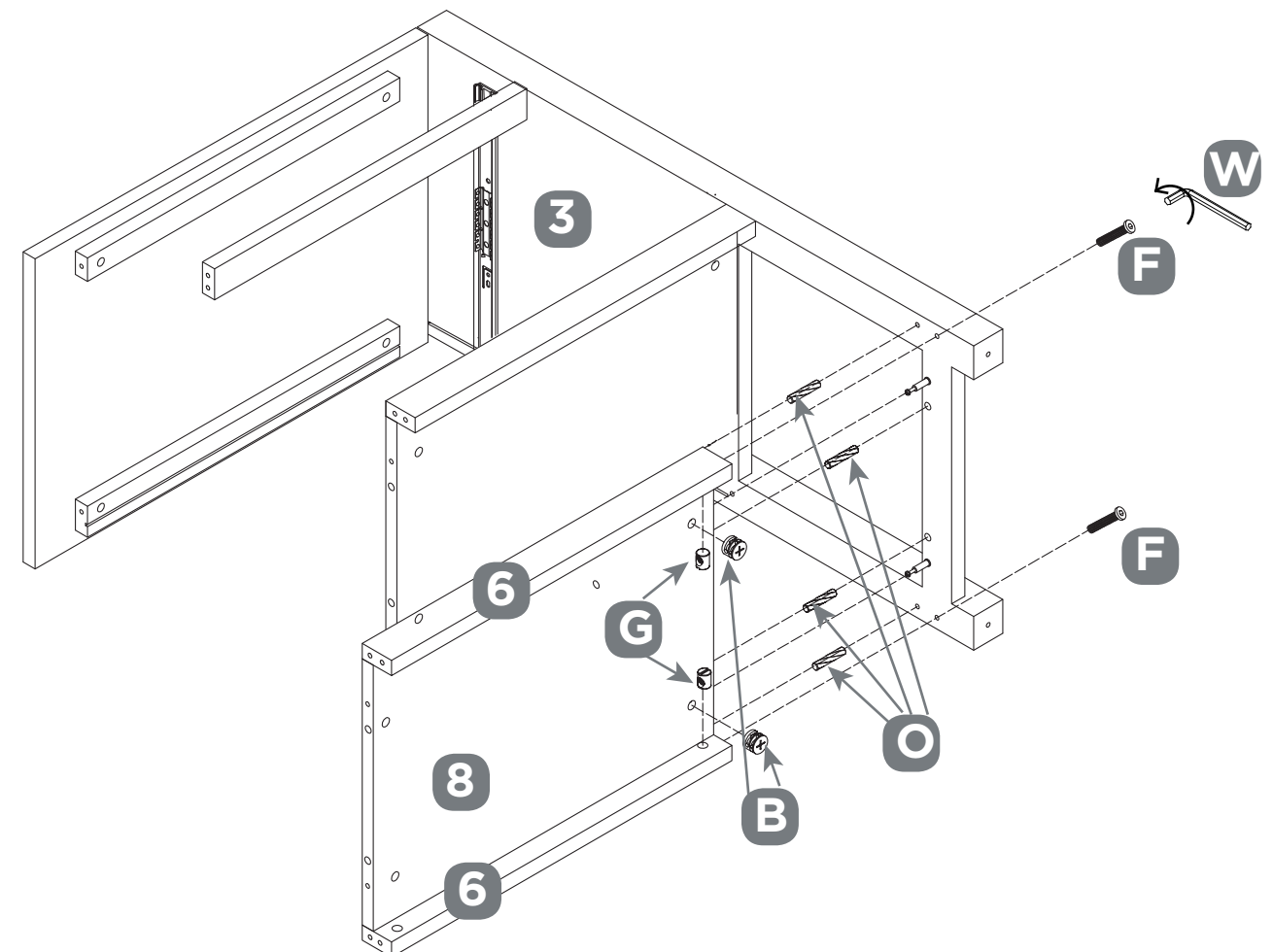
Insert two HIDDEN CAMS (B) and two WOOD DOWELS (O) into the BASE PANEL (8) as shown.

Insert two BARREL NUTS (G) inside the bottom end of DRAWER BOTTOM SUPPORT RAILS (6) as shown.

Fasten two SUPPORT RAIL (6) and BASE PANEL (8) to the RIGHT END (3), using two BOLTS (F).

Hand tighten the BOLTS.

NOTE: Ensure the Hidden Cams (B) and BOLTS (F) are in the exact holes.  
Ensure all BOLTS are tightened.



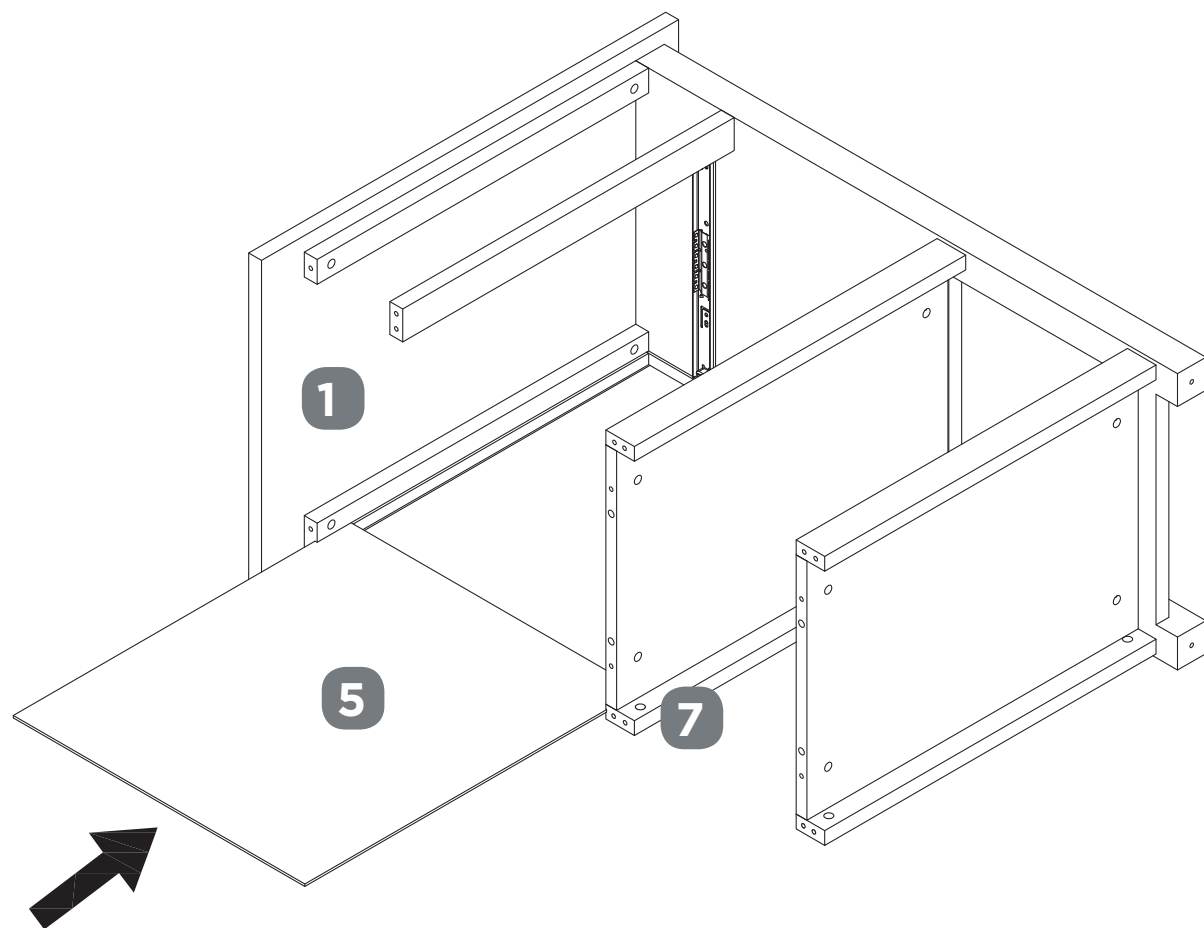
## STEP-BY-STEP INSTRUCTIONS

### STEP 7

REQUIRES 1, 5, 7

Unfold the BACK PANEL (5) and lay it over your unit.

Slide the BACK PANEL (5) into the groove in granite top support rail and DRAWER BACK SUPPORT RAIL (7) as shown.



### STEP 8

REQUIRES B, F, G, O, W, 1, 2, 4, 6, 7, 8

Insert two BARREL NUTS (G) into the granite top support rail as shown.

Insert two WOOD DOWELS (O) into the DRAWER BOTTOM RAIL (4).

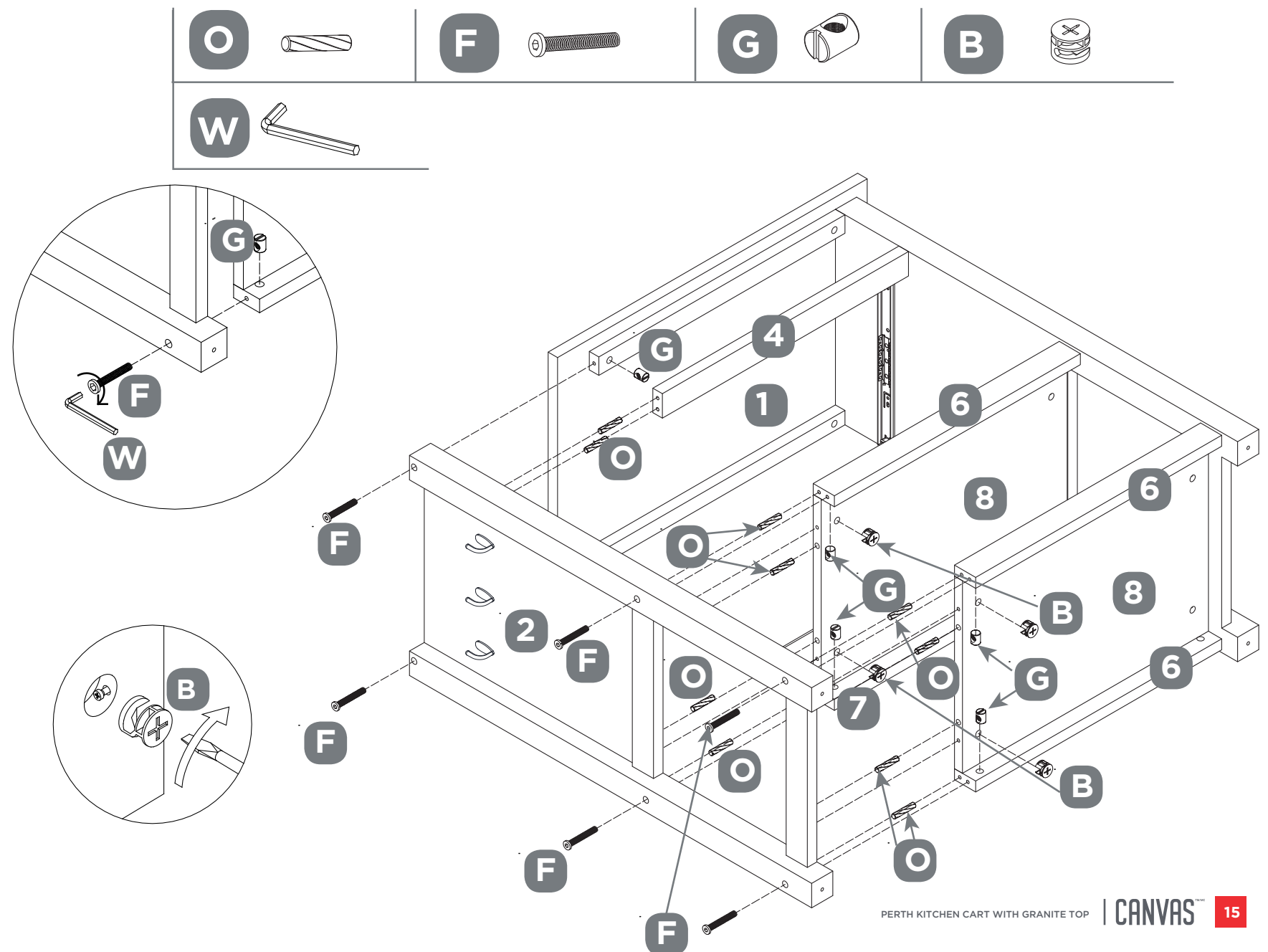
Insert two HIDDEN CAMS (B) and two WOOD DOWELS (O) into each BASE PANEL (8) as shown.

Insert two BARREL NUTS (G) inside the bottom end of each DRAWER BOTTOM SUPPORT RAILS (6) and DRAWER BACK SUPPORT RAIL (7) as shown.

Insert two WOOD DOWELS (O) into the other end of DRAWER BOTTOM SUPPORT RAIL (6) and DRAWER BACK SUPPORT RAIL (7).

Insert two WOOD DOWELS (O) into the SUPPORT RAILS (6).

Fasten above parts to the LEFT END (2) as shown, using six BOLTS (F).  
Hand tighten the BOLTS.





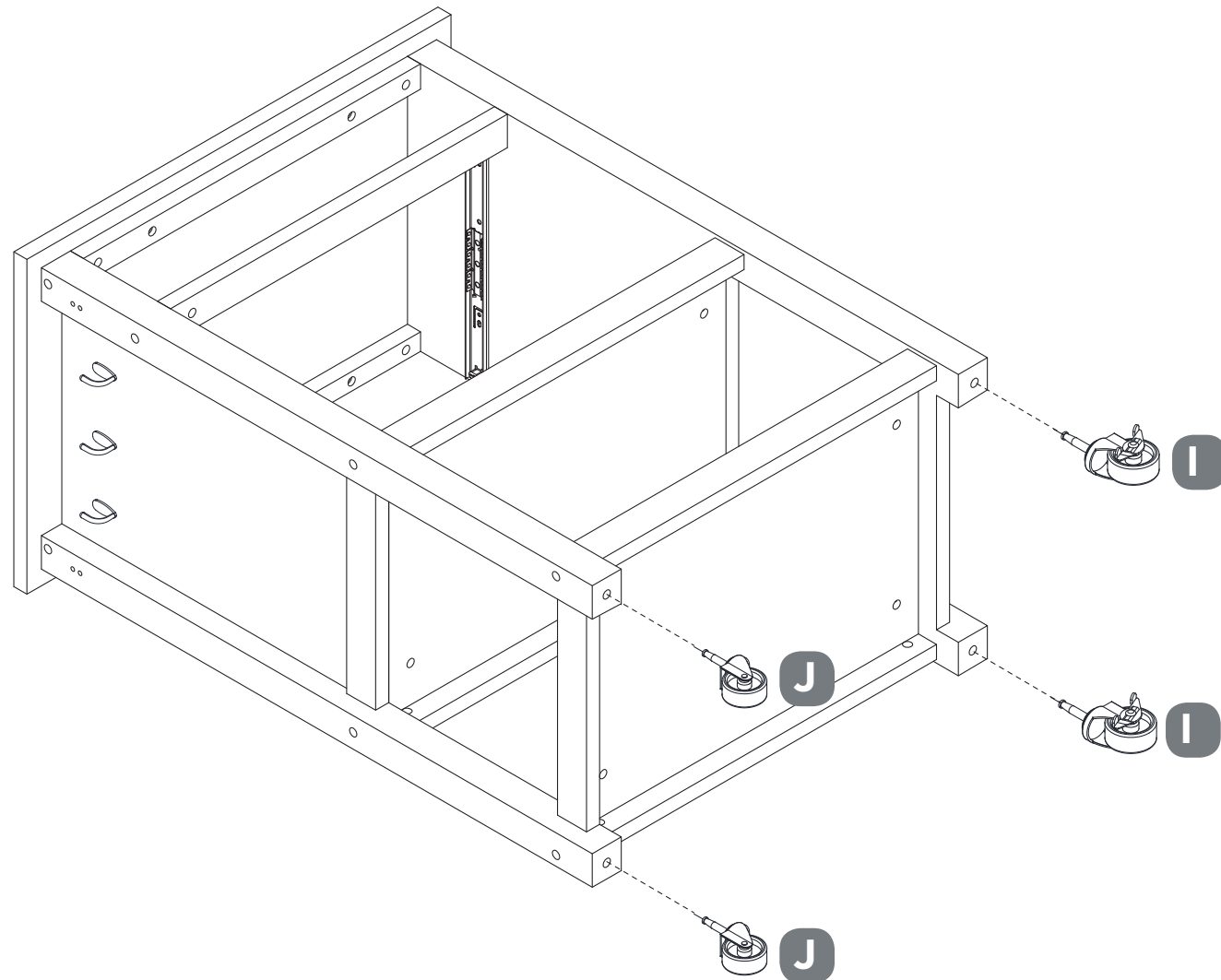
## STEP-BY-STEP INSTRUCTIONS

### STEP 9

REQUIRES I, J

Identify two LOCKING WHEELS (I) and two WHEELS (J) for the specific legs.

Next, affix each wheel by inserting the stem of wheel completely into the pre-drilled hole on each leg.



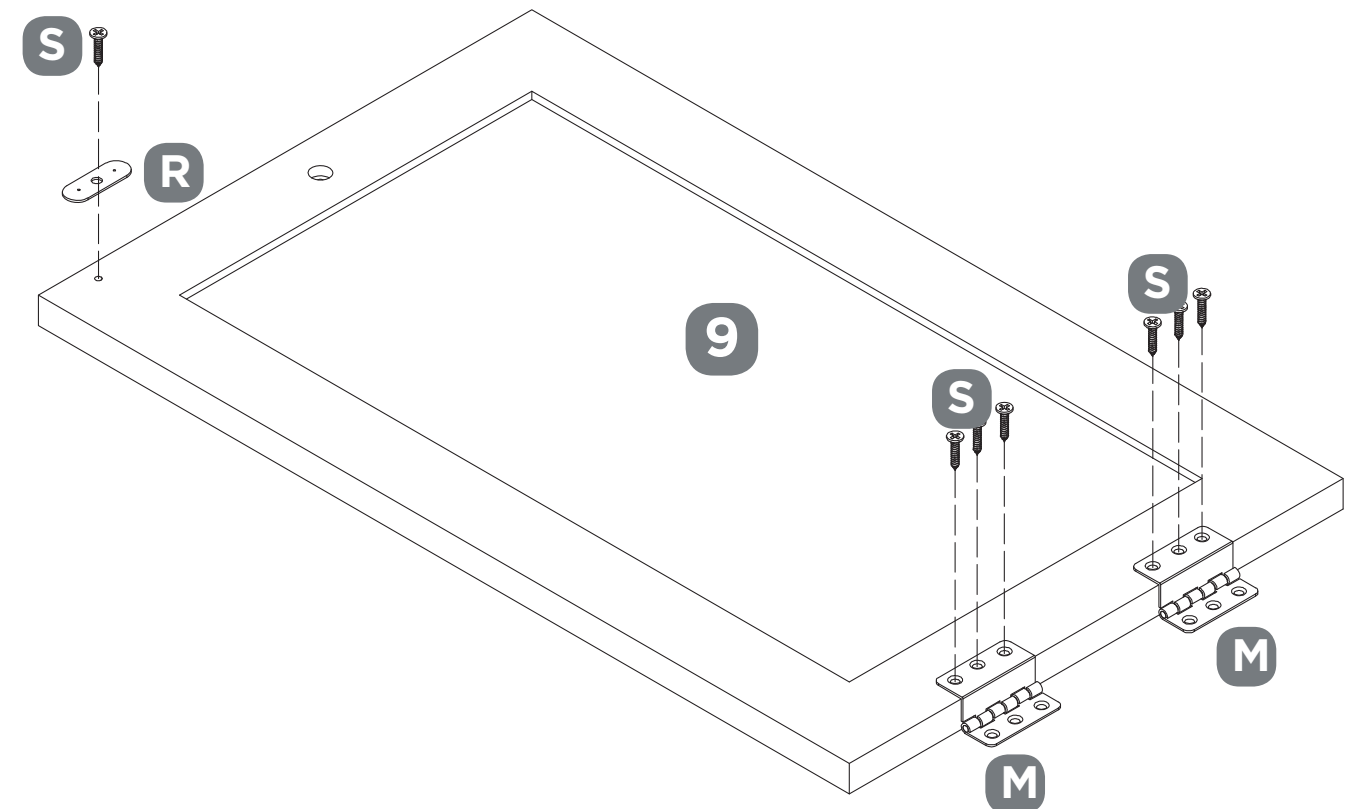
### STEP 10

REQUIRES M, R, S, 9

Fasten METAL PLATE (R) to the STORAGE DOOR (9), using one SCREW (S).

Fasten two DOOR HINGES (M) to the STORAGE DOOR (9), using six SCREWS (S).

NOTE: Ensure all screws are in the exact holes.  
Ensure all screws are tightened.



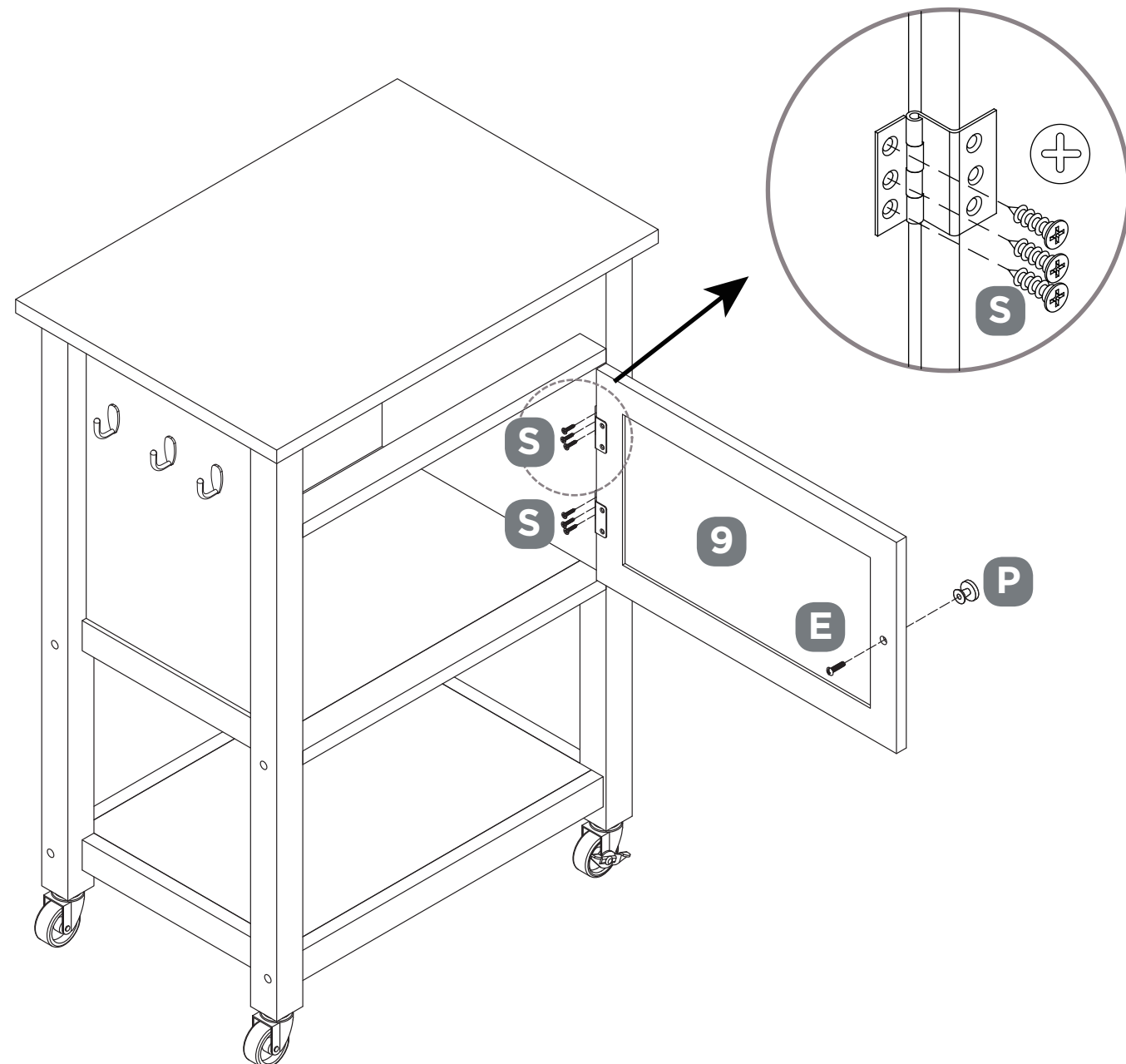
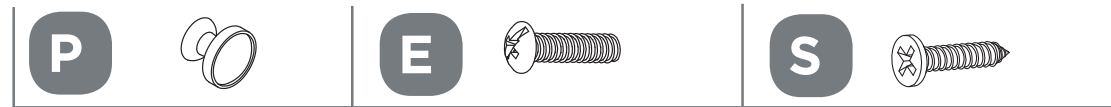
## STEP-BY-STEP INSTRUCTIONS

### STEP 11

REQUIRES E, S, P, 9

Attach STORAGE DOOR (9), using six SCREWS (S).

Fasten the DOOR HANDLE (P) to the STORAGE DOOR (9), using one HANDLE BOLT (E) as shown. Hand tighten the HANDLE BOLT.



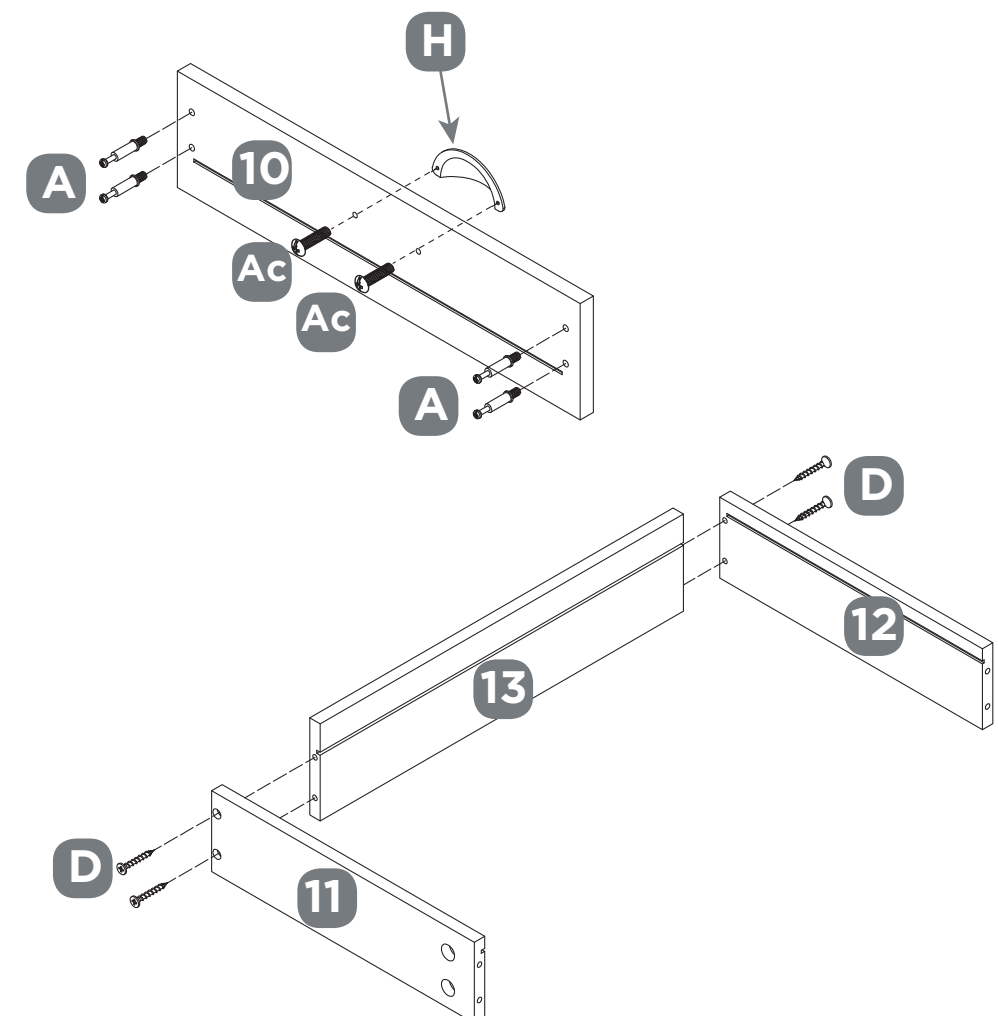
### STEP 12

REQUIRES A, D, H, Ac, 10, 11, 12, 13

Fasten the DRAWER HANDLE (H) to the DRAWER FRONT (10), using two HANDLE BOLT (Ac). Hand tighten the SCREWS.

Insert four CAM BOLTS (A) to DRAWER FRONT (10).

Fasten DRAWER LEFT (11) and DRAWER RIGHT (12) to the DRAWER BACK (13), using four FLAT HEAD SCREWS (D).



## STEP-BY-STEP INSTRUCTIONS

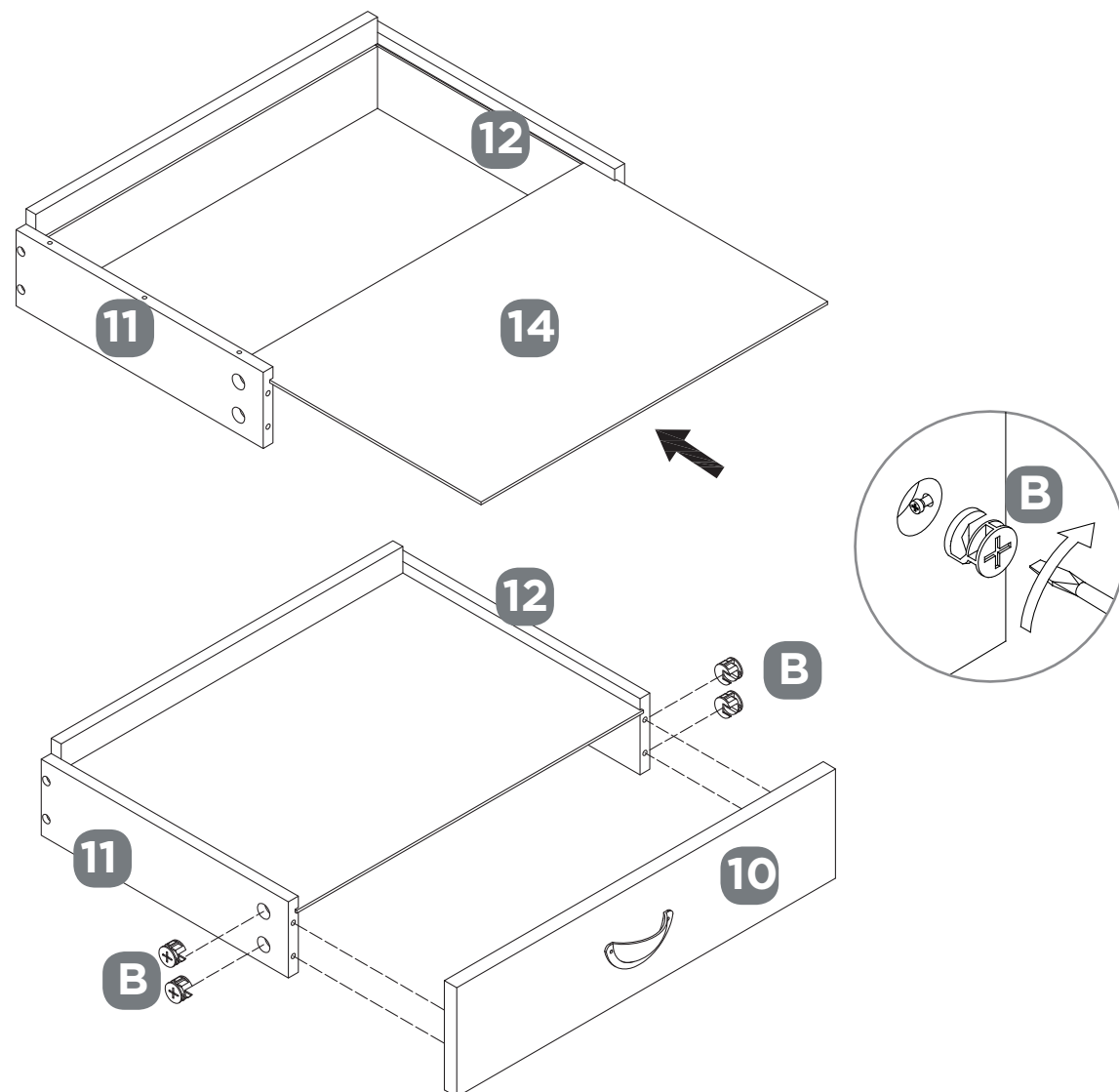
### STEP 13

REQUIRES B, 10, 11, 12, 14

Slide the DRAWER BOTTOM (14) into the groove in DRAWER LEFT (11) and DRAWER RIGHT (12). Mark equal margins along all four edges of the DRAWER BOTTOM (14).

Push on opposite corners of your unit if needed to make it “square”.

Fasten the DRAWER FRONT (10) to the DRAWER LEFT (11) and DRAWER RIGHT (12), using four HIDDEN CAMS (B). Hand tighten all HIDDEN CAMS.



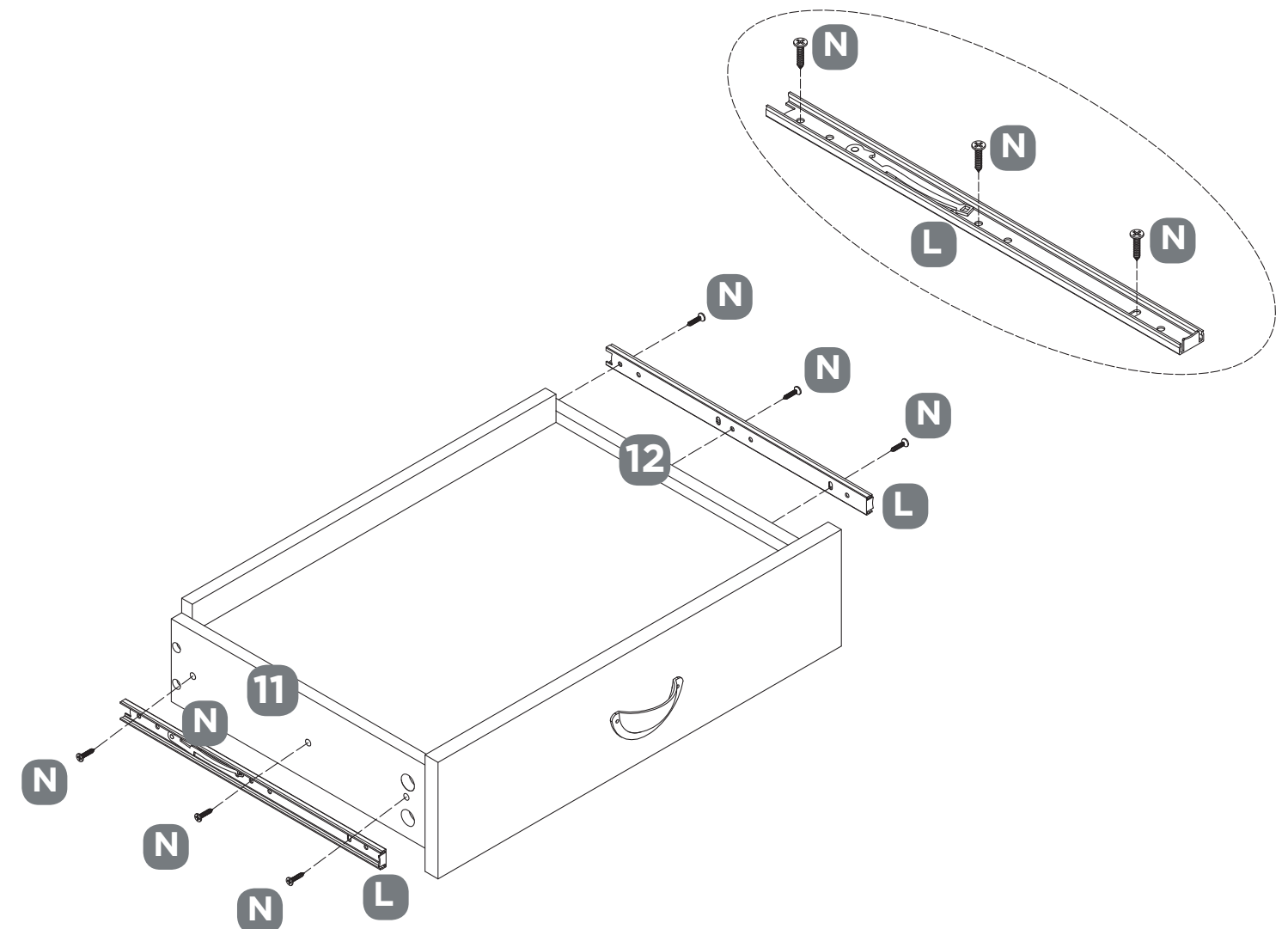
### STEP 14

REQUIRES L, N, 11, 12

Fasten the SLIDE TRACK (L) to the DRAWER LEFT (11), using three SCREWS (N). Hand tighten the SCREWS.

Fasten the SLIDE TRACK (L) to the DRAWER RIGHT (12), using three SCREWS (N). Hand tighten the SCREWS.

NOTE: Ensure all SCREWS are in the exact holes. Ensure all SCREWS are tightened.



## STEP-BY-STEP INSTRUCTIONS

## STEP 15

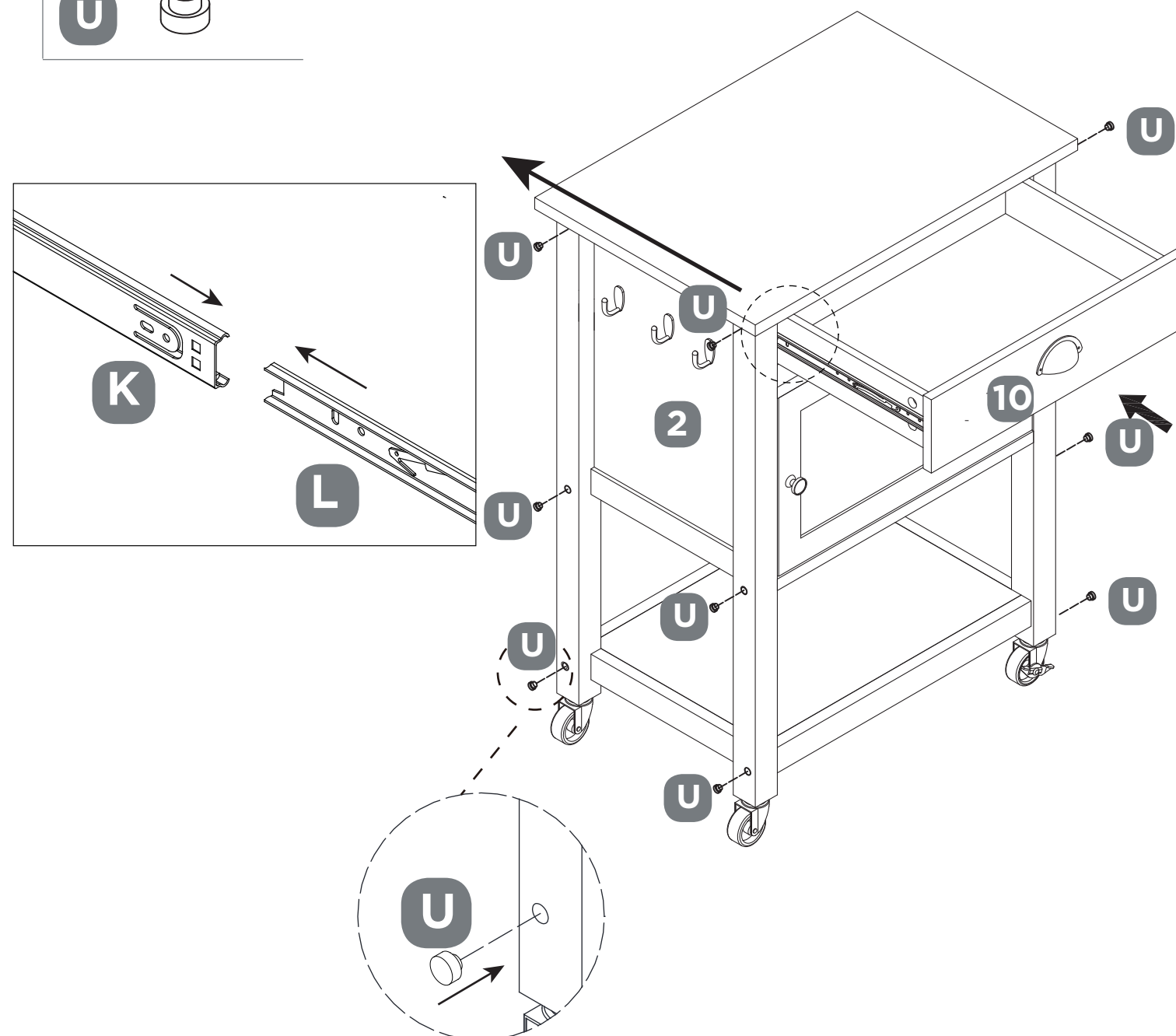
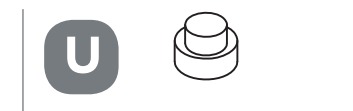
REQUIRES K,L,U, 10

Ensure your unit is upright and in your desired location.

Insert the drawers into the unit by lining up the SLIDE TRACK (L) on the drawer with the SLIDE RUNNER (K) on the unit.

Insert twelve WOOD PLUGS (U) into the Cam Lock holes.

This completes assembly.



## STEP 16

REQUIRES X, Y, Z, Aa, Ab

Carefully stand your unit upright and place in its final location.  
To reduce the risk of Tip-over, we suggest to use ANTI-TIP RESTRAINTS (provided).

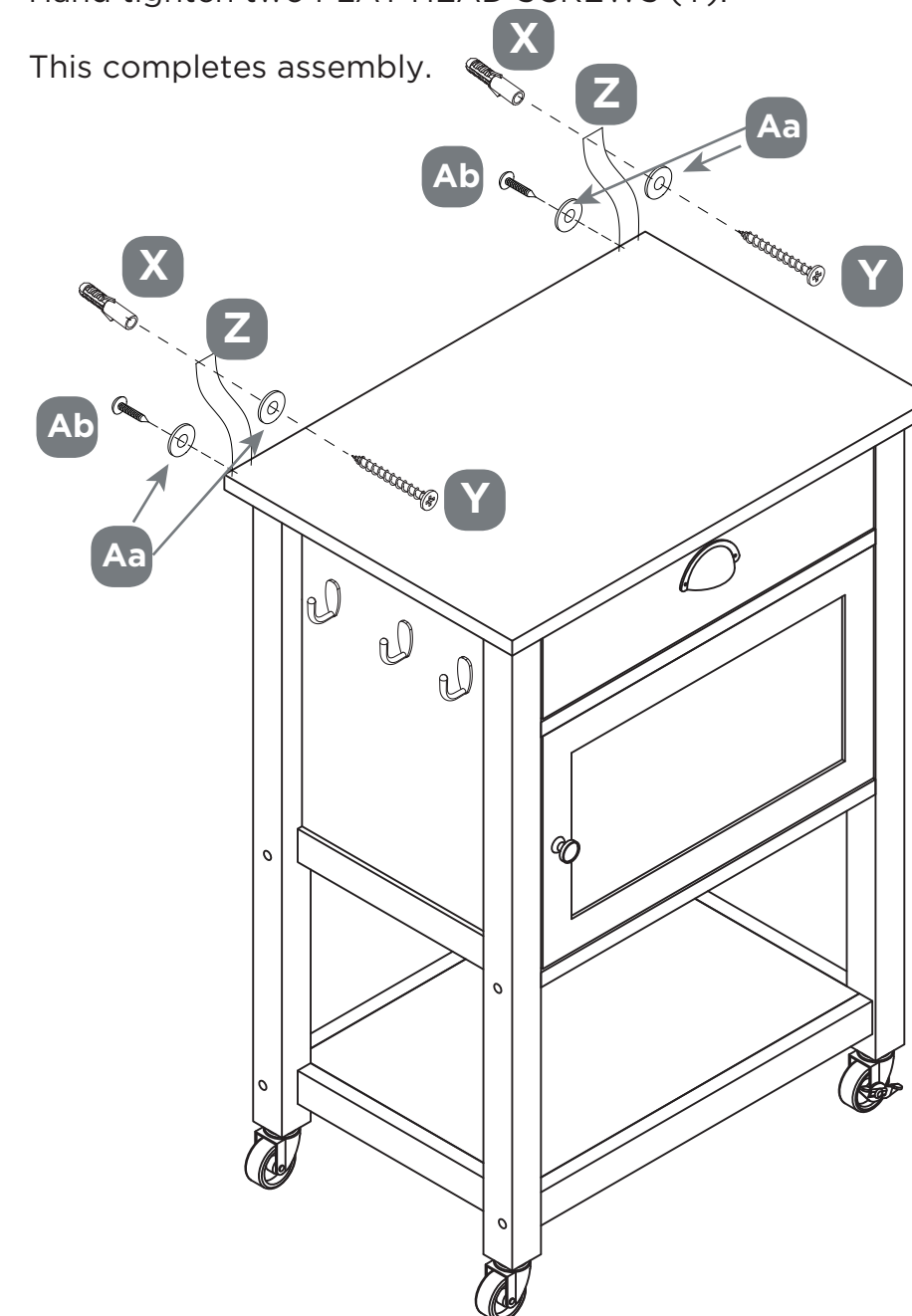
Fasten two ANTI-TIP RESTRAINTS (Z) to two LEGS on the back separately.

Fasten two WASHERS (Aa) to the ANTI-TIP RESTRAINTS (Z), using two SHORT PAN HEAD SCREWS (Ab).

Using ANTI-TIP RESTRAINTS as a guide, mark 2 spots on the wall.  
Insert two EXPANSION SCREWS (X) into the wall.  
Hammer EXPANSION SCREWS into the wall.

Fasten two FLAT HEAD SCREWS (Y) into the EXPANSION SCREWS through two WASHERS (Aa).  
Hand tighten two FLAT HEAD SCREWS (Y).

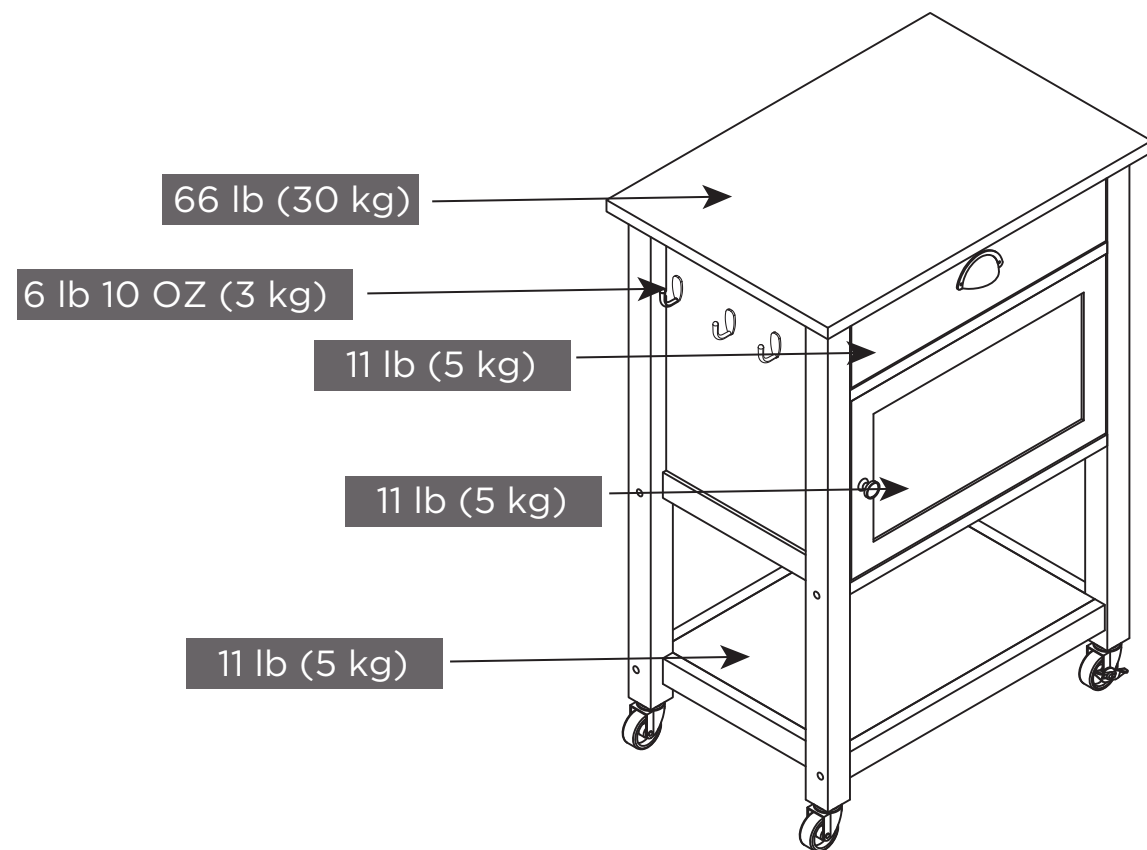
This completes assembly.



## STEP-BY-STEP INSTRUCTIONS

### MAXIMUM WEIGHT CAPACITY

This unit has been designed to support the maximum loads shown. Exceeding these load limits could cause sagging, instability, product collapse, and/or serious injury. Please make sure that all the objects are removed before moving the assembled unit.



## WARRANTY



### 1-YEAR LIMITED WARRANTY

This CANVAS™ product carries a one (1) year warranty against defects in workmanship and materials. Trileaf Distribution agrees to replace the defective product free of charge within the stated warranty period, when returned by the original purchaser with proof of purchase. This product is not guaranteed against wear or breakage due to misuse and/or abuse.

MODEL NO. **168-0073-8**

Made in China

Imported by Trileaf Distribution Trifeuil Toronto, Canada M4S 2B8

## CARING FOR YOUR ITEM

- 1** Weight Capacity:
- Do not exceed maximum weight capacity of 66 lb (30 kg) on top.
  - Do not exceed maximum weight capacity of 11 lb (5 kg) on drawer.
  - Do not exceed maximum weight capacity of 11 lb (5 kg) on shelf.
  - Do not exceed maximum weight capacity of 11 lb (5 kg) on storage base.
  - Do not exceed maximum weight capacity of 6 lb 10 oz (3 kg) on hooks.

- 2** Children have died from furniture tip-over. To reduce your risk:
- Do not stand on, sit on or climb this unit.
  - Do not use as a stool.
  - For indoor use only.
  - Always place the unit on a flat level surface.

- 3** Wipe clean with a damp cloth.

- 4** Avoid direct sunlight.

# CANVAS<sup>TM/MC</sup>

Exclusively at Canadian Tire

