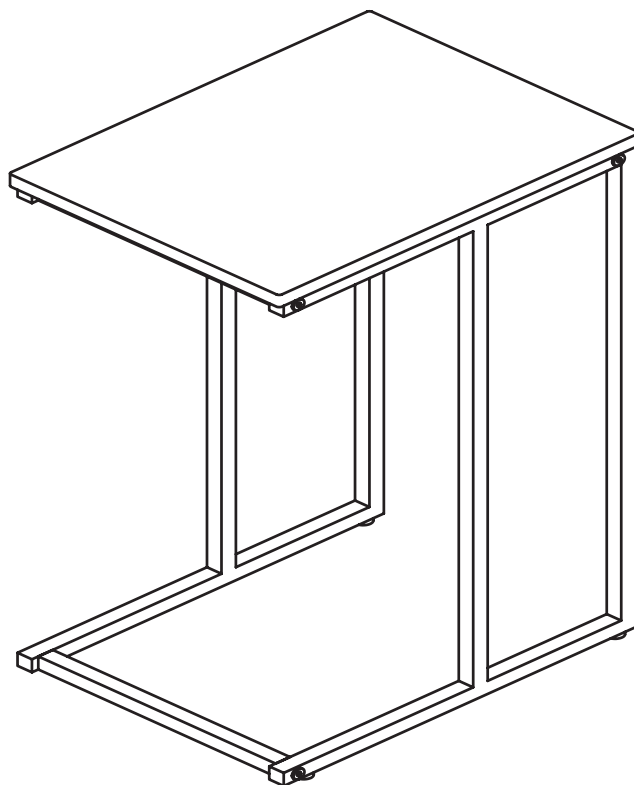


# CANVAS<sup>TM/MC</sup>

## TRINITY SIDE C-TABLE

---

MODEL NO. 168-0069-0



### ASSEMBLY INSTRUCTIONS



**HAVING TROUBLE?**

TOLL-FREE:

1-888-670-6684

# CANVAS<sup>TM/MC</sup>

**We believe** the power of decor and how it makes up the fabric of your home.

That's why the **CANVAS** assortment gets its **inspiration from Canadians and the way they live.**

From on-trend furniture pieces, to Holiday Decor and Outdoor Living, **CANVAS** makes it easy to refresh your space to reflect **your unique style and the way you live.**

**We welcome** your thoughtful comments and feedback so please visit our website to tell us about your experience.

We would love to see how you bring **CANVAS** to life. Please share your photos using **#mycanvasstyle.**

## TABLE OF CONTENTS

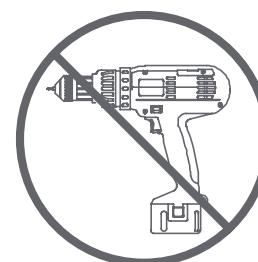
Parts List/Exploded View .....	4
Step-by-Step Instructions .....	6
Warranty .....	10
Caring for your item .....	10



WARNING! TO REDUCE THE RISK OF SERIOUS INJURY, READ THE FOLLOWING SAFETY INSTRUCTIONS BEFORE ASSEMBLING AND USING THE SIDE TABLE.

- This product is intended for domestic indoor use only.
- The product should be placed on a flat horizontal surface.
- Arrange necessary manpower when assembling or moving the product.
- Do not push furniture, especially on a carpeted floor. Have someone help you lift heavy items and set it in place.
- Check all screws periodically for tightness. When required, tighten them again.
- Do not exceed maximum weight capacity of 44 lb (20 kg).

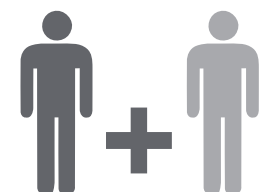
## TOOLS REQUIRED



To avoid damage, ensure screws are hand tightened. **DO NOT USE POWER TOOLS TO ASSEMBLE YOUR UNIT.**



Hex Key

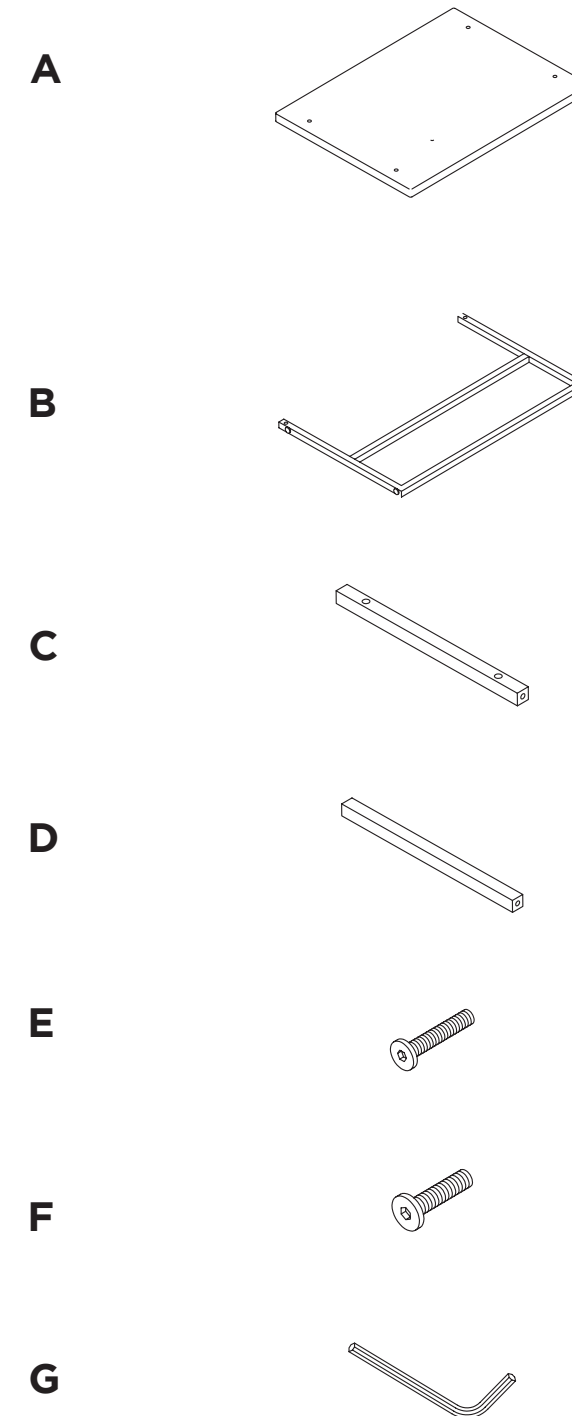


2 people

## PARTS LIST

ITEM	DESCRIPTION	QUANTITY
A	Tabletop	1
B	Table legs	2
C	Tabletop rungs	2
D	Table leg rung	1
E	Screws M6x35 mm	6
F	Screws M6x25 mm	4
G	Hex key	1

## EXPLODED VIEW

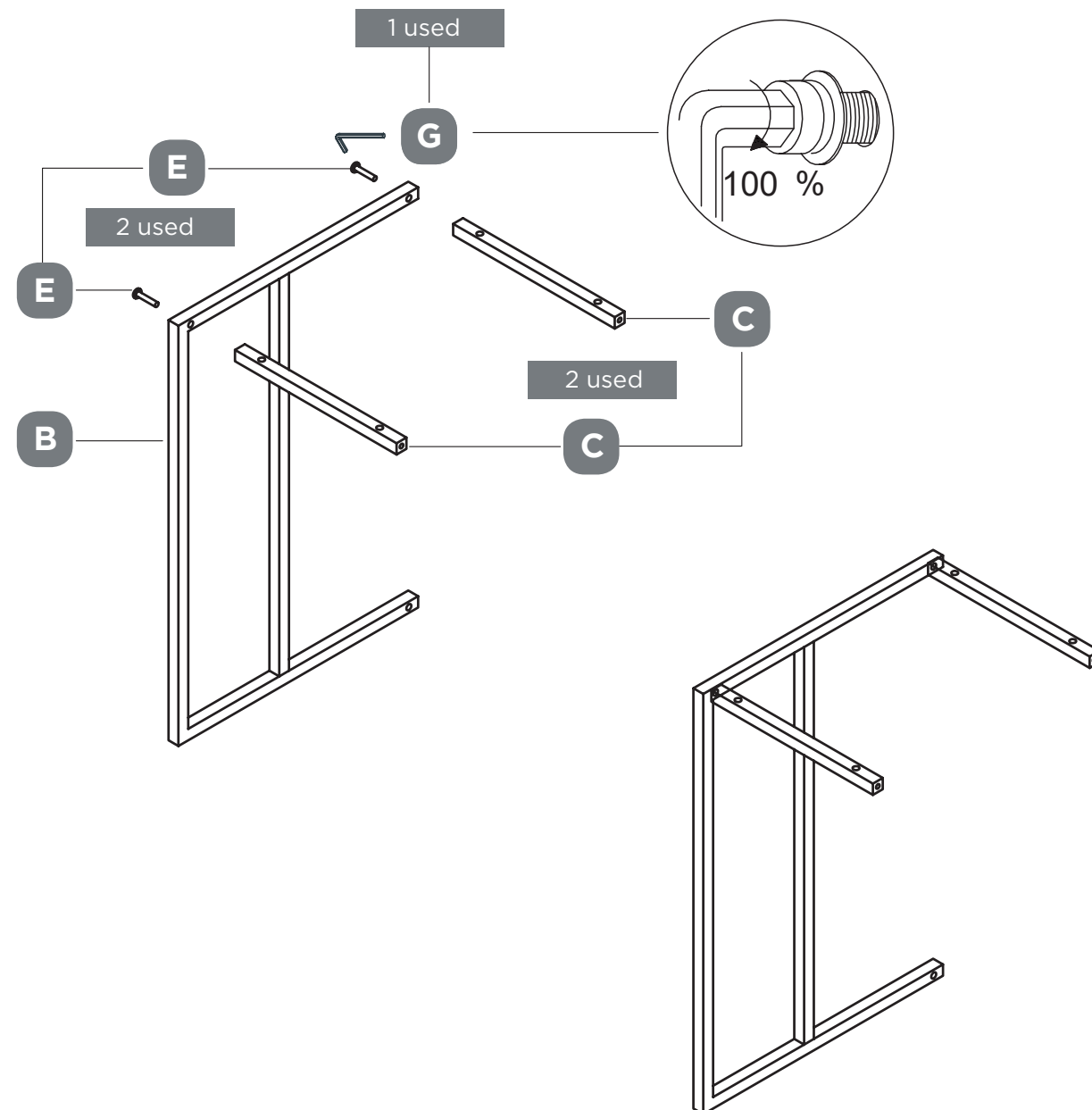
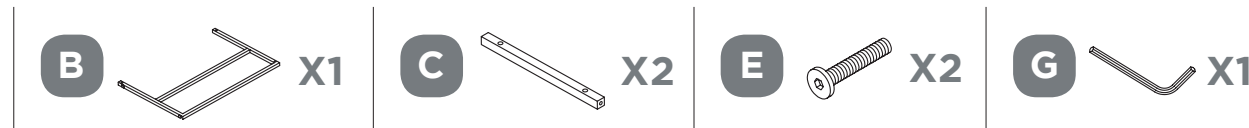


## STEP-BY-STEP INSTRUCTIONS

### STEP 1

REQUIRES B, C, E, G

Hand tighten the two TABLETOP RUNGS (C) to the TABLE LEGS (B) using two SCREWS M6x35 mm (E) and HEX KEY (G).

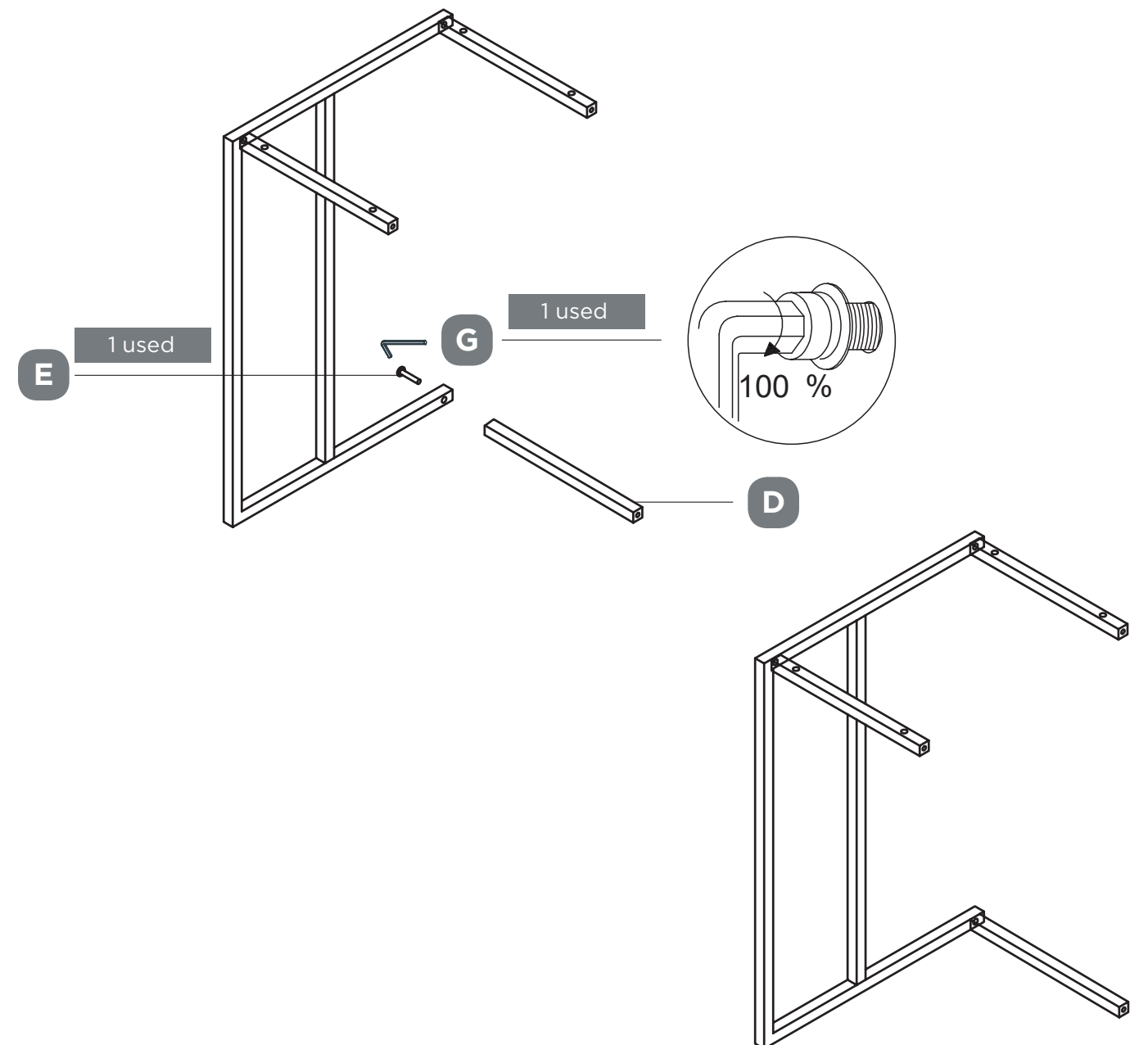
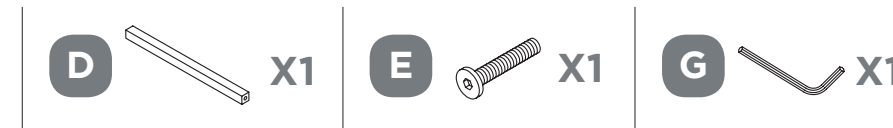


## STEP-BY-STEP INSTRUCTIONS

### STEP 2

REQUIRES D, E, G

Hand tighten the TABLE LEG RUNG (D) to the TABLE LEGS (B) using one SCREW M6x35 mm (E) and HEX KEY (G).

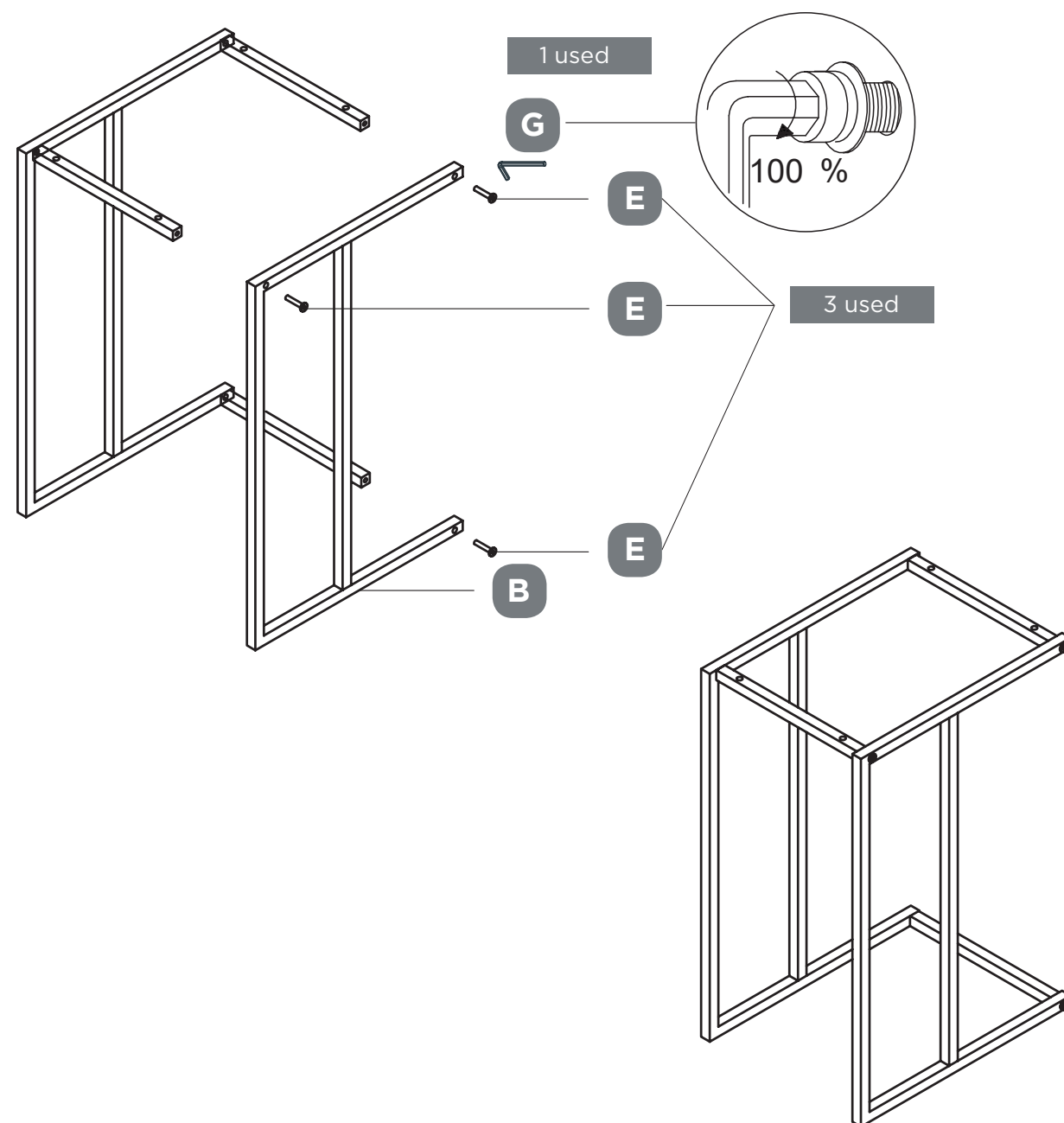


## STEP-BY-STEP INSTRUCTIONS

### STEP 3

REQUIRES B, E, G

Hand tighten the other TABLE LEG (B) to the TABLETOP RUNGS (C) and the TABLE LEG RUNG (D) using three SCREWS M6x35 mm (E) and HEX KEY (G).

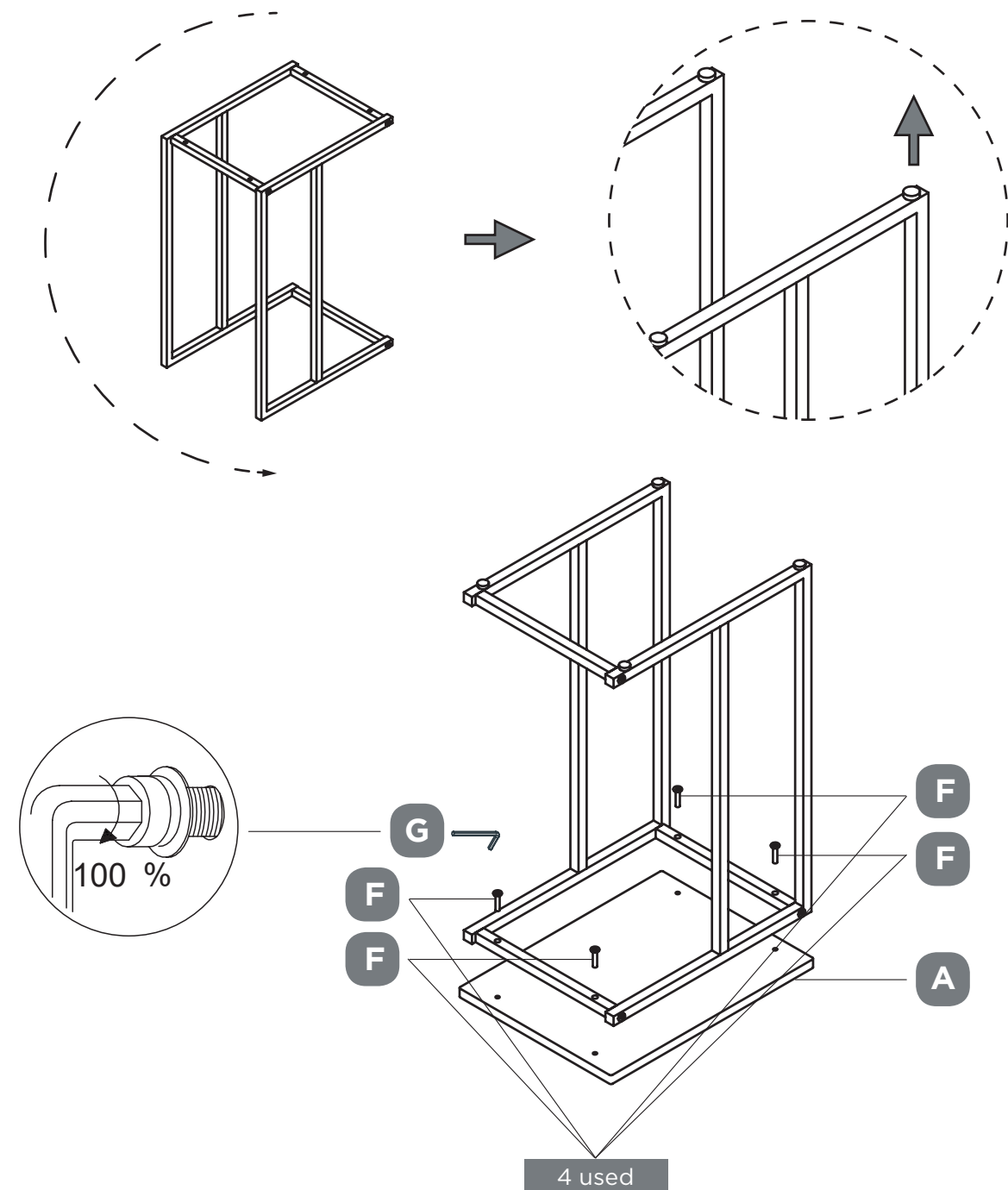


## STEP-BY-STEP INSTRUCTIONS

### STEP 4

REQUIRES A, F, G

Note: Overturn the frame so that the side with the plastic foot pads is facing upwards. Hand tighten the TABLETOP (A) to the frame using four SCREWS M6x25 mm (F) and HEX KEY (G).



WARRANTY



1-YEAR LIMITED WARRANTY

This CANVAS™ product carries a one (1) year warranty against defects in workmanship and materials. Trileaf Distribution agrees to replace the defective product free of charge within the stated warranty period, when returned by the original purchaser with proof of purchase. This product is not guaranteed against wear or breakage due to misuse and/or abuse.

MODEL NO. 168-0069-0

Made in China  
Imported by Trileaf Distribution Trifeuil Toronto, Canada M4S 2B8

CARING FOR YOUR ITEM

1

1. Avoid direct sunlight. This product is intended for indoor use only.

2

2. Do not light any fires on or near the product!

3

3. Do not use unless all bolts and screws are firmly tightened.

4

4. For cleaning, use water or mild detergent; do not use solvent-type cleaning agents; if there is solvent on the product, clean with dry cloth and water.

5

5. Do not exceed the maximum load capacity (20 kg, 44 lb).

6

6. Do not stand or step on the product.

CANVAS™/MC

Exclusively at Canadian Tire

