



'Castilla' Rain Barrel Pump & Linking Kit

The submersible pump and components included in this kit allow for pressurized watering of your garden from single or linked rain barrels.

Installation Instructions

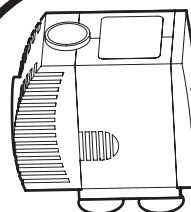
- 1) Locate and screw the pump fitting into the top of the pump. (Additional fittings are included in the box should you ever wish to use this system with a different diameter hose or the Algreen 'Madison' Rain Barrel.)
- 2) Connect the female end of any standard garden hose to the pump fitting. (The hose included with the 'Castilla' rain barrel may also be used.)
- 3) Remove the gray screen from the top of the rain barrel and put it aside.
- 4) Carefully lower the pump onto the bottom of the rain barrel through the screen opening, keeping the pump cord and garden hose as straight as possible.
- 5) When you are ready to water, simply plug in the pump to any GFCI equipped 120V outlet. Unplug the pump to stop watering or when the barrel(s) are empty to avoid damage to the pump.

Linking 2 Barrels Together

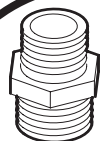
Barrels can be linked together at either the top over flows or bottom outlets. This kit includes a brass 'female to female' hose adapter that allows 2 barrels to be linked from the bottom using the garden hose(s) supplied with each rain barrel.

- 1) Screw the brass hose adapter to the end of one of the hoses attached to the bottom of the 'Castilla' rain barrel.
- 2) The other end of the adapter can now be screwed on to the hose from the other barrel, or directly to the bottom of the 2nd barrel.

For more information on green living,
log on to: www.algreenproducts.com

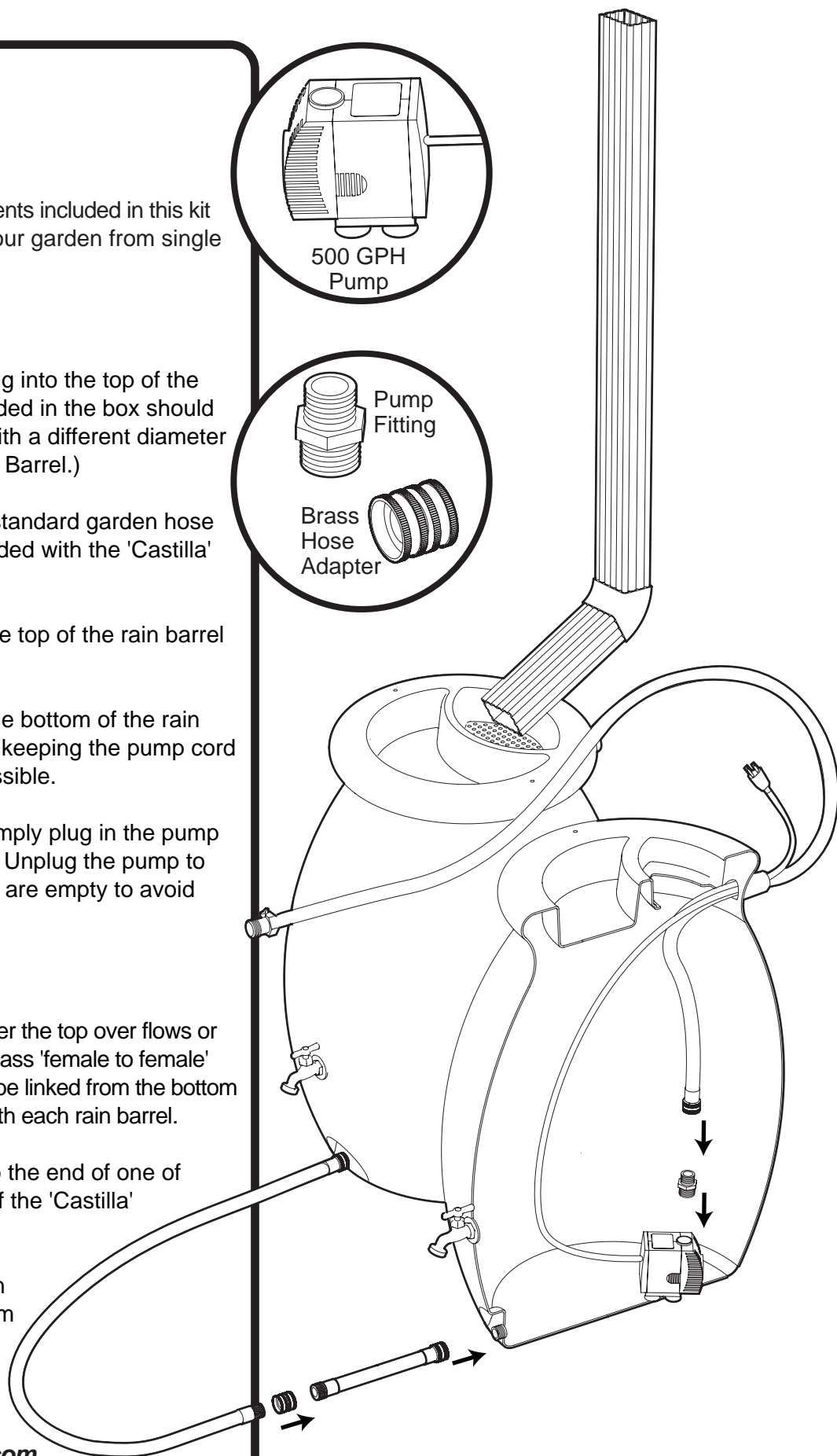


500 GPH
Pump



Pump
Fitting

Brass
Hose
Adapter





'Madison' Rain Barrel Pump & Linking Kit

The submersible pump and components included in this kit allow for pressurized watering of your garden from single or linked rain barrels.

Installation Instructions

- 1) Locate and screw the pump fitting into the top of the pump. (Alternate barbed fittings are included in the box should you ever wish to use this system with a different diameter hose.)
- 2) Connect the female end of any standard garden hose to the pump fitting. (The hose included with the 'Madison' rain barrel may also be used.)
- 3) Remove the gray screen from the top of the rain barrel and put it aside.
- 4) Carefully lower the pump onto the bottom of the rain barrel through the screen opening, keeping the pump cord and garden hose as straight as possible.
- 5) When you are ready to water, simply plug in the pump to any GFCI equipped 120V outlet. Unplug the pump to stop watering or when the barrel(s) are empty to avoid damage to the pump.

Optional Fountain Head Assembly

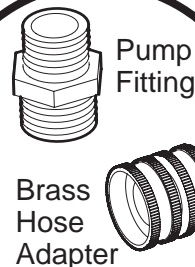
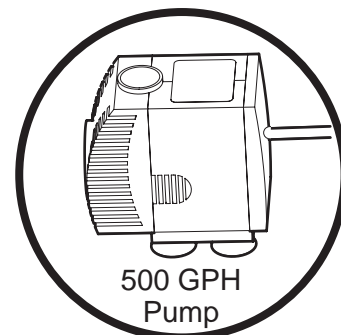
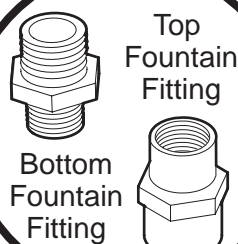
- 1) To create a decorative fountain, drill a 7/8" hole in the center of the screen.
- 2) Connect the Top and Bottom Fountain Fittings to either side of the hole in the screen. Connect the Bottom Fountain Fitting to the Pump Fitting with the hose included with the 'Madison' rain barrel.
- 3) To water in the fountain configuration, simply attach any standard garden hose to the Top Fountain Fitting.

Linking 2 Barrels Together

Barrels can be linked together at either the top overflows or bottom outlets. This kit includes a brass 'female to female' hose adapter that allows 2 barrels to be linked from the bottom using the garden hose(s) supplied with each rain barrel.

- 1) Screw the brass hose adapter to the end of one of the hoses attached to the bottom of the 'Madison' rain barrel.
- 2) The other end of the adapter can now be screwed on to the hose from the other barrel, or directly to the bottom of the 2nd barrel.

For more information on green living, log on to: www.algreenproducts.com



Optional Fountain Head Assembly

