

## 7' Glacial Pre-Lit Colour-Changing Tree

model no. 151-8574-6 | Toll-free number: 1-866-827-4985

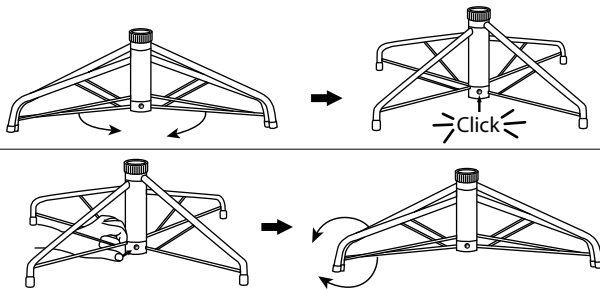
**IMPORTANT:** Please read this manual carefully before assembly and save it for reference.

### TREE ASSEMBLY INSTRUCTIONS

Set up and light up your tree in less than 10 minutes. Carefully follow the instructions below on how to quickly and easily set up your new tree.

1. Before you start to assemble your tree, choose an appropriate location near a wall outlet.
2. First assemble the tree stand and place on a level surface. **(See Fig. A.)**

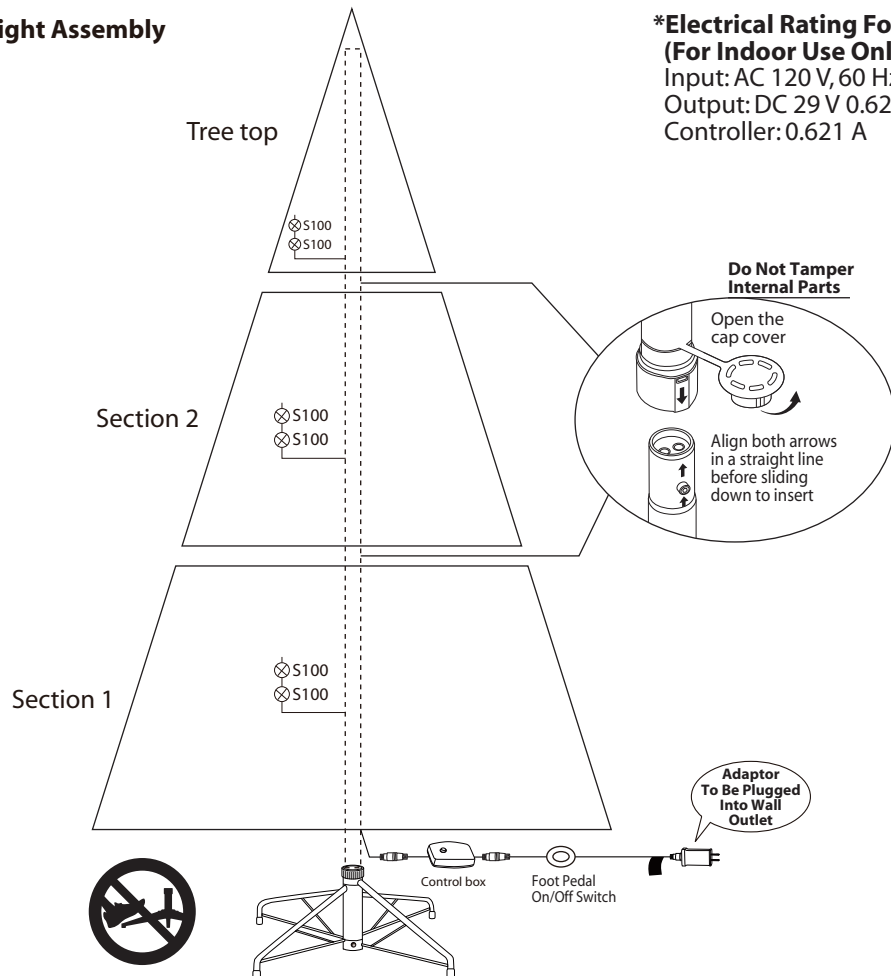
**Fig. A - Tree Stand Assembly**



Swivel the legs of the stand until they snap into position. (The legs should be evenly spaced once this step is complete.) Place the tree stand on a level surface.

To close the stand, press the metal button and fold the legs together.

**Fig. B - Tree and Light Assembly**



**\*Electrical Rating For The Tree  
 (For Indoor Use Only.)**

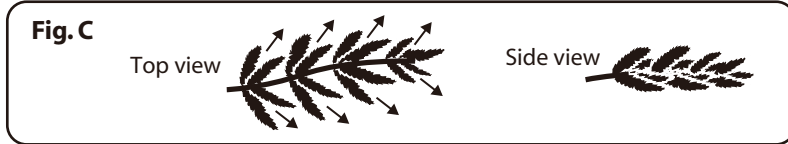
Input: AC 120 V, 60 Hz, 0.38 A

Output: DC 29 V 0.621 A

Controller: 0.621 A

3. Each tree section is numbered with a sticker. Please identify all sections before assembling.
4. Assemble the tree from the bottom to the top. Start with the bottom section. Remove the protective cap before inserting it into the pre-assembled stand. Before proceeding to the next step, make sure the pole is firmly inserted and secured into the stand.  
**Note:** Do not step on the tree stand legs during the setup. This may deform the tree stand and may result in an unbalanced tree.
5. Continue by inserting the upper tree section(s) into the lower section(s) until the tree top is inserted.

6. Allow branches to fall into place or gently pull up and out. When adjusting branches, be sure that all wires are free of branch hinges.
7. Insert green-labelled plug into the wall outlet. **(See Fig. B.)** Your entire tree should now be lit. If some bulbs flicker or do not light, search for any loose plugs and/or broken, loose or missing bulbs. Connect the plugs or replace the bad bulbs promptly in order to maintain the performance and life expectancy of your pre-lit tree.
8. Begin to shape the branches and tips, working from the bottom to the top. Start with tips farthest from the pole and fan out one to the right, one to the left and one at the centre of the main stem. **(See Fig. C.)**

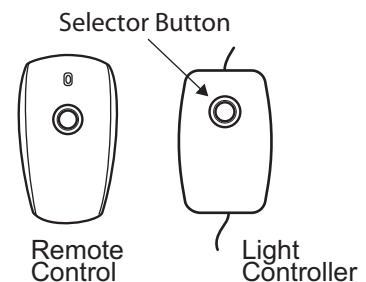


9. After shaping the entire tree following the previous step, slightly upsweep all branch tips for a uniform look. Shift branches to fill any gaps. Your pre-lit tree is now complete and ready to be decorated.

## HOW TO USE THE DUAL-COLOUR LIGHT CONTROLLER AND REMOTE CONTROL:

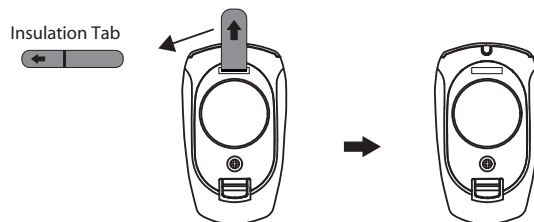
Press the selector button on the "Dual Color Light Controller" or "Remote Controller" to select among:

- (1) CLEAR - MULTI: FADING (2) CLEAR: FADING**  
**(3) CLEAR - MULTI: ALTERNATING (4) CLEAR: STEADY**  
**(5) CLEAR - MULTI: SLOW FADING (6) MULTI: STEADY**  
**(7) MULTI: FADING (8) COMBINATION**

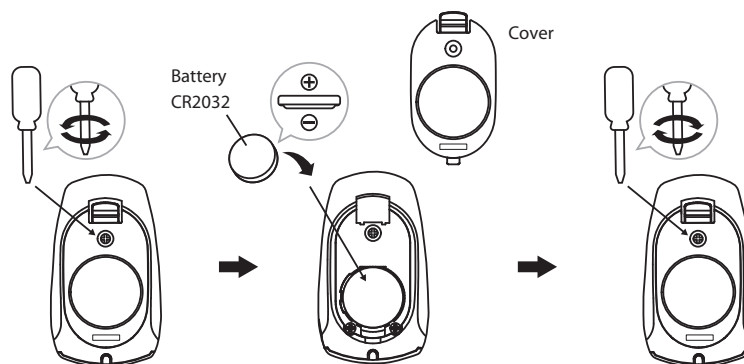


## BATTERY REPLACEMENT

1. Remove the insulation tab.



2. Loosen the screw of the battery cover with a screwdriver (not included).
3. Replace the used battery with a new CR2032 button cell battery (not included). Make sure that the battery is installed with the correct polarity (+ and -).
4. Retighten the screw to close and secure the battery cover.

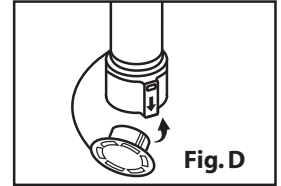


## ⚠ WARNING

1. This product is powered by a lithium battery. Due to their small size, lithium batteries can easily be swallowed by children. Ingestion of such batteries has been known to cause death.
2. Do not expose light set to moisture.
3. Remove batteries when unit will not be used for an extended period of time, or when depleted.
4. Dispose of used batteries properly by following directions on batteries.
5. Use only CR2032 batteries for the remote controller.
6. Clean the battery contacts prior to battery installation.
7. **DO NOT DISPOSE OF BATTERIES IN FIRE. BATTERIES MAY EXPLODE OR LEAK.**
8. Battery must be recycled or disposed of properly. Dispose of as per the requirements of your local municipality.

## STORAGE INSTRUCTIONS

1. Unplug cord from the wall outlet first and then remove all ornaments and decorations.
2. Disassemble the tree from the top to the bottom. Start with the tree top: gently lift straight up to remove from section below and fold all branches toward the pole.
3. In case of difficulty separating the tree pole (trunk), apply a small amount of lubricant at the joint and rotate the upper pole in both directions. Lift up the upper pole again.
4. Continue by gently lifting straight up each section(s) from the section below, and fold all branches toward the pole until the bottom section is removed from the tree stand.  
Put the protective cap on the poles to avoid damaging the internal parts. **(See Fig. D.)**
5. Carefully place all tree sections into shipping box and tape it shut.
6. When not in use, please store your tree in a cool, dry place away from sunlight. Exposing your tree to excessive heat or humidity may damage your tree.
7. Keep out of reach of pets and children.

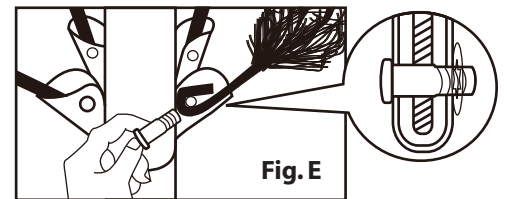


### If the tree does not illuminate:

1. Please check to make sure that all plugs are properly connected and that the power cord is plugged into the wall outlet. Refer to assembly guide for instructions. Try stepping on the ON/OFF button of the foot pedal.
2. Please check for loose, broken or missing light bulbs and replace as needed.
3. When multiple products are connected together, do not exceed the lowest of the indicated maximum wattage on the cord tag near the connected product's receptacle.

### Loose Hinge Pin

1. Extra hinge pins are included for repairing the hinges. Place the branch into the slot of the bracket.
2. Insert a new hinge pin through the hole and secure using the retainer washer. **(See Fig. E.)**



## SPARE PARTS

Included with each tree are hinge pins/washers. Included with pre-lit trees are spare bulbs. If extra parts are needed, please contact our customer service centre.

## CAUTION:

1. To reduce the risk of fire and electric shock:
  - a) Use only the power supply that was provided with this product,
  - b) Do not install on trees having needles, leaves or branch covering of metal or materials which look like metal, and
  - c) Do not mount or support strings in a manner that can cut or damage wire insulation.
2. Use only the adaptor supplied with this product. Using a different adaptor will damage the lights and may cause fire, or electric shock hazards.
3. The controller and remote controller (if included) can only be used with this product.

This product carries a five (5) year warranty against defects in workmanship and materials. Noma Canada agrees to replace a defective product, within the stated warranty period, when returned to the place of purchase with proof of purchase. This product is not guaranteed against wear or breakage due to misuse and/or abuse.

Made in China  
Imported by  
Noma Canada, Toronto, Canada M4S 2B8  
DATE CODE / DATE DE CODE: 22322