

7 ½' AURORA MUSIC AND LIGHT SHOW TREE

model no. 151-8410-6 | Toll-free number: 1-866-827-4985

IMPORTANT: Please read this manual carefully before assembly and save it for reference.

TREE ASSEMBLY INSTRUCTIONS

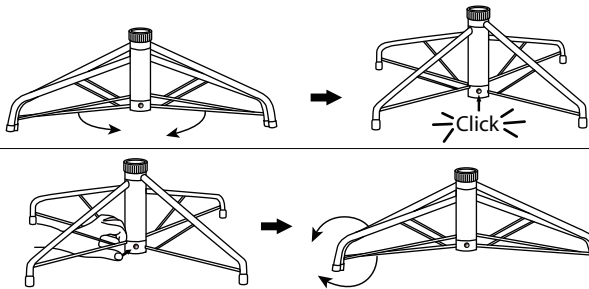
Congratulations on purchasing your new Aurora Music and Light Show Tree.

This tree comes with an automatic power pole lighting system, allowing you to set up your tree and light it up in minutes!

Carefully follow the instructions below to quickly and technology, allowing up your new tree.

1. Choose a level surface near a wall outlet.
2. Assemble the tree stand. (See Fig. A)

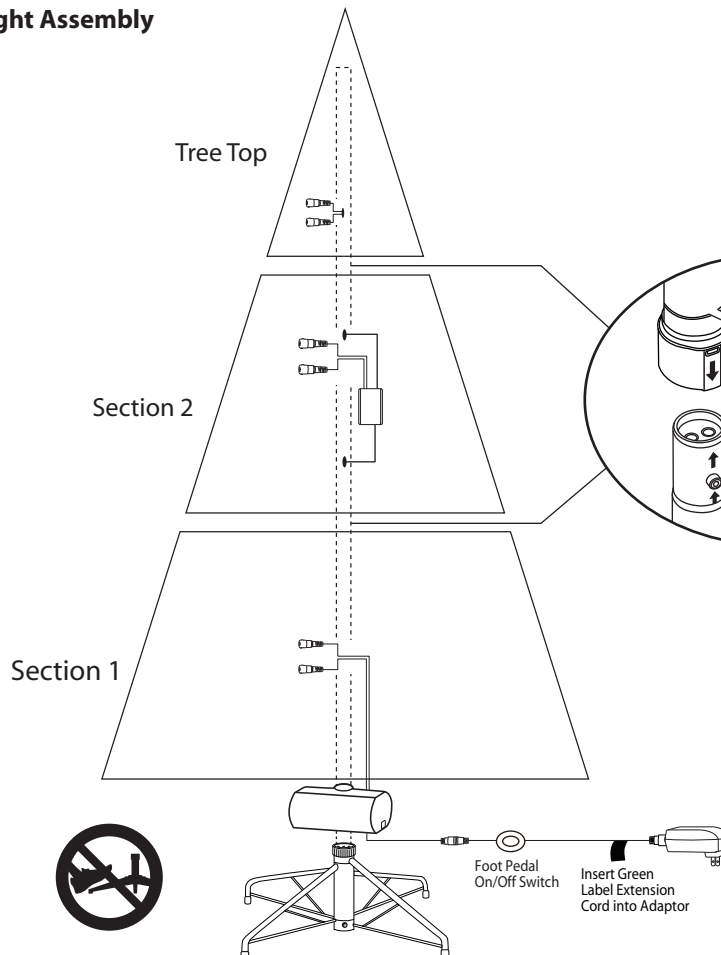
Fig. A - Tree Stand Assembly



Swivel the legs of the stand until they snap into position. The legs should be evenly spaced once this step is complete. Place the tree stand on a level surface.

To close the stand, press the metal button and fold the legs together.

Fig. B - Tree and Light Assembly



***Electrical Rating For The Tree
(For Indoor Use Only)**

Input: AC 120 V, 60 Hz, 0.83 A

Output: DC 24 V, 2 A

Controller: 2 A

**Do Not Tamper
With Internal Parts**

Open the cap cover

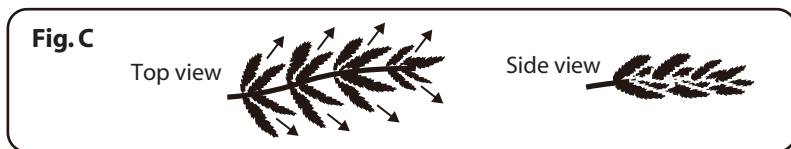
Align both arrows in a straight line before sliding down to insert

3. Identify all tree sections (See Fig. B) by the stickers on them, and start assembling from bottom to top.

4. Open the protective cap of pole, and insert the pole into the stand. Allow all branches to fall down into place. Check to make sure that all wires are free from branch hinges.

Note: Do not step on the tree stand legs during the setup. This may deform the tree stand and may result in an unbalanced tree.

5. Shape the tree section one branch at a time. Start with the tips closest to the pole and move outwards. Fan all the tips out in alternating directions, and slightly upsweep them for a natural look. (See Fig. C)



6. Repeat **Steps 4 and 5** for the upper tree section(s) until tree top is installed and shaped.

7. Connect plug with adaptor, and plug it in to the wall outlet as indicated in **Fig. B**.

8. Step back and view your tree. Shift branches to fill any gaps. Your Christmas tree is now ready to be decorated.

STORAGE INSTRUCTIONS

1. Unplug from power source, and detach plug from adaptor. Remove all ornaments and decorations.

2. Disassemble the tree from top to bottom. Gently lift pole straight up to remove from the lower section, and fold all branches toward the pole.

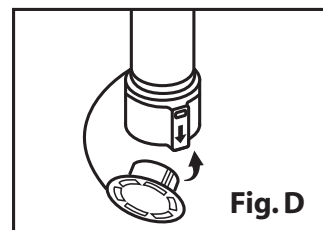
3. Close the protective caps on the poles to avoid damaging the internal parts. (See Fig. D)

4. Place the disassembled tree into the shipping box and tape it shut.

5. Store your tree in a cool, dry place away from sunlight. Exposure to excessive heat or humidity may damage your tree.

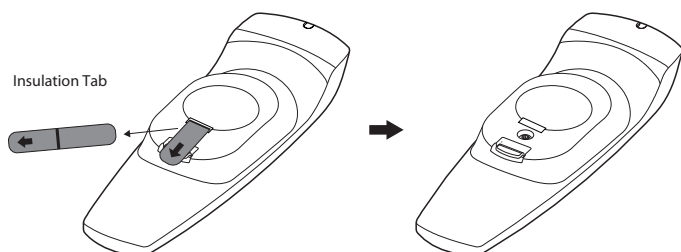
6. Battery must be recycled or disposed of properly. Dispose of as per the requirements of your local municipality.

7. Keep out of reach of pets and children.



REMOTE CONTROL INSTRUCTIONS

Remove the insulation tab of the remote controller.



Key Functions

Volume Up
Press once to increase the volume by one level. A total of 10 levels can be selected.

Volume Down
Press once to decrease the volume by one level. A total of 10 levels can be selected.

Play
Press this button to play all 7 songs/light shows in sequence repeatedly. Once pressed, the sequence will always play from the start.

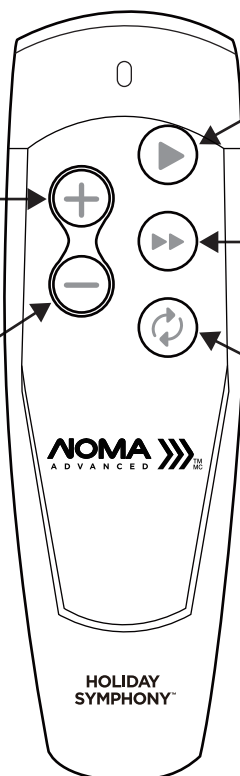
Play Next
Press this button to skip to the next song/light show when the light show is on.

Colour-Changing (RGB Lights)
Press this button to select from the preset light colours/effects (1-5) or to turn off the lights.

Song List:

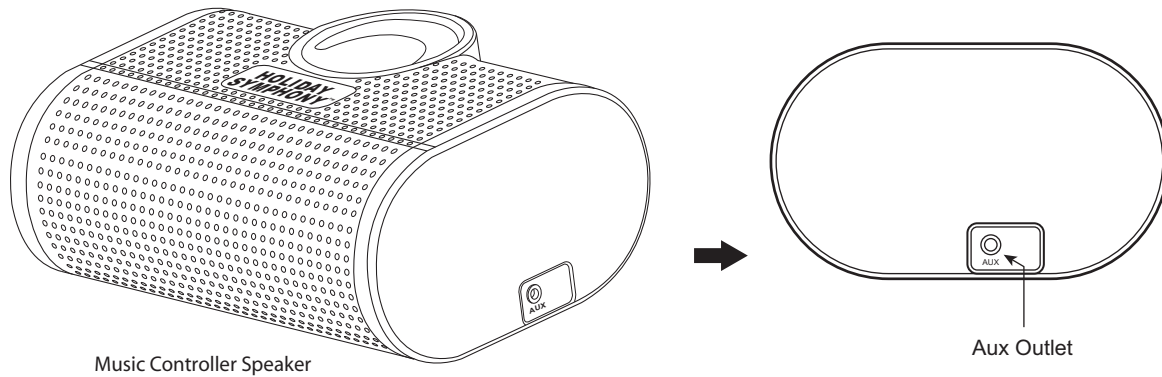
1. Carol of the Sugar Plums
2. Deck the Halls
3. Candela Teaser
4. Joy to The World/O Come All Ye Faithful
5. We Wish You a Merry Jingle Bells
6. Russian Dance
7. Toys on the Housetop

1. Random Light Colours/Effects ("Beautiful Movement": Pre-programmed light effects cycle without music accompaniment)
2. Warm White Steady Glow
3. Warm White Twinkling
4. Multi-Colour Steady Glow
5. Multi-Colour Twinkling
6. Off



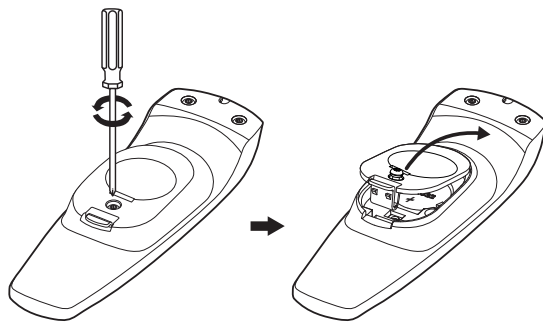
Aux Outlet

Songs can be played via an external speaker. Simply connect the Music Controller Speaker to an external speaker with a 3.5 mm audio cable. Once connected to an external speaker, there will be no sound output from the conductor speaker.



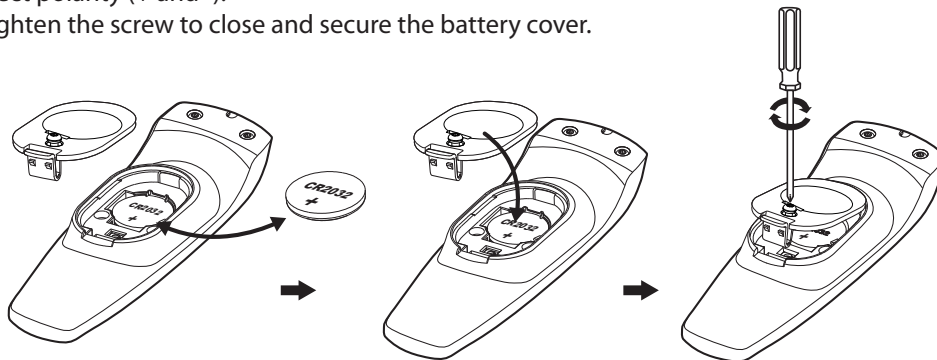
Battery Replacement

1. Loosen the screw from the battery cover of the remote controller with a screwdriver (not included).



2. Replace the used battery with a new CR2032 button cell battery (not included). Make sure that the battery is installed with the correct polarity (+ and -).

3. Retighten the screw to close and secure the battery cover.



⚠ WARNING

1. This remote controller is powered by a lithium battery. Due to their small size, lithium batteries can easily be swallowed by children. Ingestion of such batteries has been known to cause death.
2. Small parts, keep batteries out of reach of children.
3. Do not expose the remote controller to moisture.
4. Remove battery when not used for an extended period of time, or when depleted.
5. Dispose of used battery properly.
6. Use only CR2032 battery for the remote controller.
7. Clean the battery contact surfaces gently prior to battery installation.
8. Do not dispose of batteries in fire. Batteries may explode or leak.

WARNING:

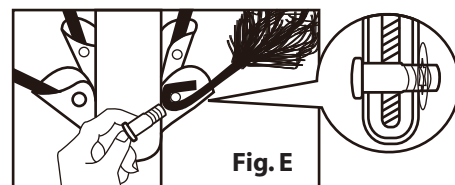
This product may potentially trigger seizures for people with photosensitive epilepsy when using the motion effect light modes.

If Tree Does Not Illuminate / Some Bulbs Do Not Light or Flicker

1. Check to make sure that all plugs and adaptor are properly connected as indicated in **Fig. B**. (If the tree comes with a foot pedal, try stepping on the ON/OFF button.)
2. Turn the poles gently to make sure pole-to-pole connection is secured.
3. Check for loose connection between light string plugs and extension cords.

Loose Hinge Pin

1. Place the branch into the hinge bracket. (See **Fig. E**)
2. Insert a new hinge pin all through the holes of bracket, and secure with a washer. (See **Fig. E - close up**)

**SPARE PARTS**

Each tree includes hinge pins and washers.

If extra parts are needed, please contact our customer service centre.

CAUTION:

1. To reduce the risk of fire and electric shock:
 - a) Use only the power supply that was provided with this product;
 - b) Do not install on trees having needles, leaves or branch covering of metal or materials which look like metal, and
 - c) Do not mount or support strings in a manner that can cut or damage wire insulation.
2. Use only the adapter supplied with this product. Using a different adapter will damage the lights and may cause fire, or electrical shock hazards.
3. The controller and remote controller (if included) can only be used with this product.

This product carries a five (5) year warranty against defects in workmanship and materials. Noma Canada agrees to replace a defective product, within the stated warranty period, when returned to the place of purchase with proof of purchase. This product is not guaranteed against wear or breakage due to misuse and/or abuse.

Made in China

Imported by

Noma Canada, Toronto, Canada M4S 2B8

DATE CODE: 22322