

7' PRE-LIT MICROBRITE SNOW DUSTED PINE

model no. 151-8409-2 | Toll-free number: 1-866-827-4985

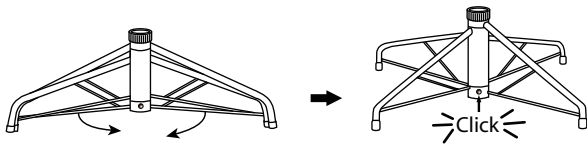
IMPORTANT: Please read this manual carefully before assembly and save it for reference.

TREE ASSEMBLY INSTRUCTIONS

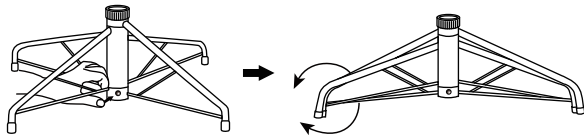
Carefully follow the instructions below to quickly and easily set up your tree.

1. Before you start to assemble your tree, choose an appropriate location near a wall outlet. Do not plug the adaptor into the wall outlet until all of the steps below are completed.
2. First assemble the tree stand and place on a level surface. (See Fig. A)

Fig. A - Tree Stand Assembly

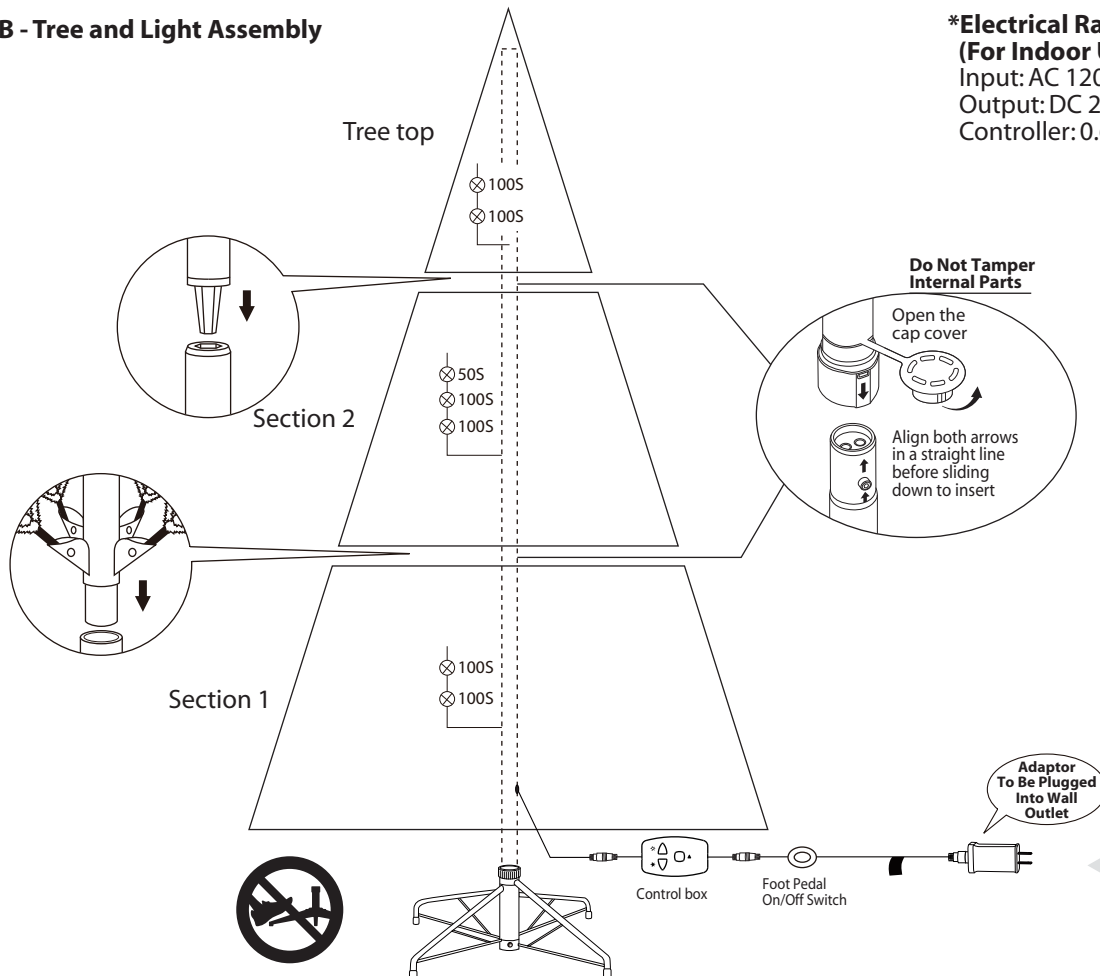


Swivel the legs of the stand until they snap into position. The legs should be evenly spaced once this step is complete. Place the tree stand on a level surface.



To close the stand, press the metal button and fold the legs together.

Fig. B - Tree and Light Assembly

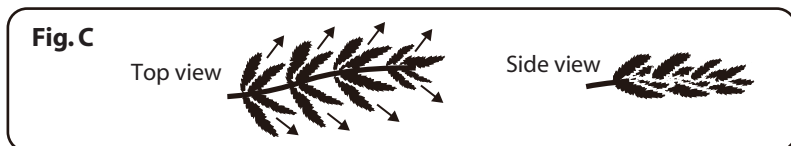


***Electrical Rating For The Tree
 (For Indoor Use Only.)**

Input: AC 120 V, 60 Hz, 0.38 A
 Output: DC 28 V, 0.643 A
 Controller: 0.643 A

3. Each tree section is numbered with a sticker. Please identify all sections before assembling.
4. Assemble the tree from the bottom to the top. Start with the bottom section. Remove the protective cap before inserting it into the already pre-assembled stand. Before proceeding to the next step, make sure the pole is firmly inserted and secured into the stand.
Note: Do not step on the tree stand legs during the setup. This may deform the tree stand and may result in an unbalanced tree.
5. Continue by inserting the upper tree section(s) into the lower section(s) until inserting the tree top.

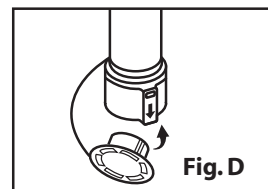
6. Allow branches to fall into place or gently pull up and out. When adjusting branches, be sure that all wires are free of branch hinges.
7. Plug the adaptor into the wall outlet. **(See Fig. B)** Your entire tree should now be lit.
8. Begin to shape the branches and tips, working from the bottom to the top. Start with tips farthest from the pole and fan out one to the right, one to the left and one at the centre of the main stem. **(See Fig. C)**



9. Once the shaping of the entire tree is completed, slightly upsweep all branch tips so a uniform look may be obtained. Shift branches to fill any gaps. Your Christmas tree is now complete and ready to be decorated.

STORAGE INSTRUCTIONS

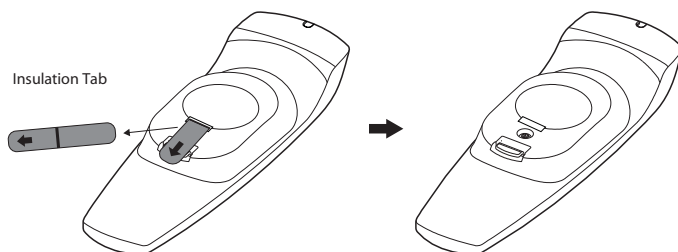
1. For pre-lit trees, first unplug adaptor from the wall outlet, remove all ornaments and decorations. Disconnect light cords between each section of the tree.
2. Disassemble the tree from the top to the bottom. Start with the tree top: gently lift straight up to remove from section below, and fold all branches toward the pole.
3. In case of difficulty separating the tree pole (trunk), apply a small amount of lubricant at the joint and gently twist the upper pole in both directions. Lift up the upper pole again.
4. Continue by gently lifting straight up each section from the section below and folding all branches toward the pole until the bottom section is removed from the tree stand. Put the protective cap on the poles to avoid damaging the internal parts. **(See Fig. D)**
5. Carefully place all tree sections into shipping box and tape it shut.
6. When not in use, please store your tree in a cool, dry place away from sunlight. Exposing your tree to excessive heat or humidity may damage your tree.
7. Dispose of used batteries per municipal or provincial law.
8. Battery must be recycled or disposed of properly. Dispose of as per the requirements of your local municipality.
9. Keep out of reach of pets and children.



OPERATING INSTRUCTIONS

You can customize the light functions by using either the Light Controller or the Remote Control.

1. Before using the Remote Control, remove the insulation tab on its rear.
2. Press the Selector Button once on either control and wait for a second to enjoy light effects in the pre-programmed sequence.



Press the Selector Button to select from the 7 preset light effects in the following sequence:

1. Steady Glow
2. Slow Fading
3. Fast Fading
4. 3 Speeds Fading
5. Slow Blinking
6. Fast Blinking
7. 3 Speeds Blinking

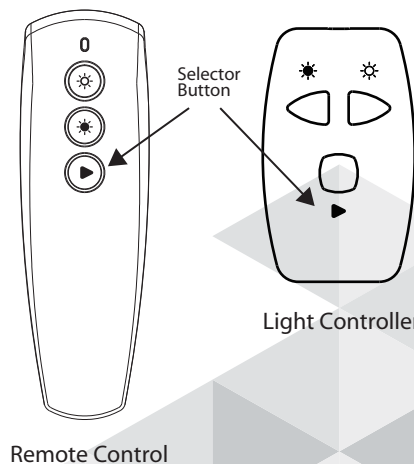
There are 5 brightness levels. Simply press the controller buttons to increase ☀ or decrease ☁ the brightness to your liking.

Default Timer Function:

Lights stay ON for 8 hours and then turn OFF for 16 hours. Timer function will restart when any control button is pressed or main power supply to the lights is reconnected.

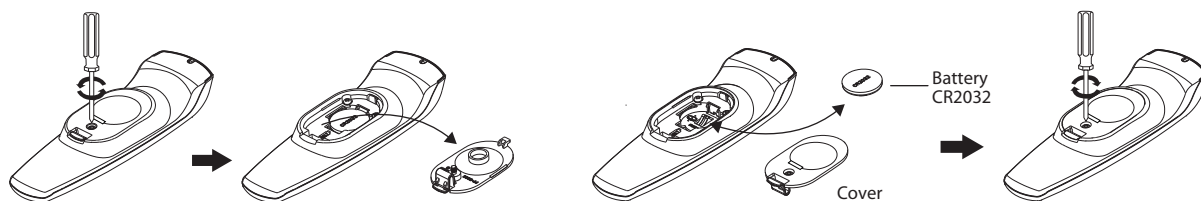
Memory Function:

If you unplug and reconnect the product to the power outlet, the product will resume the last light effect and brightness level that was selected before the power was cut out.



BATTERY REPLACEMENT OF REMOTE CONTROL

1. Loosen the screw of the battery cover with a screwdriver (not included).
2. Replace the used battery with a new CR2032 button cell battery (not included). Make sure that the battery is installed with the correct polarity (+ and -).
3. Retighten the screw to close and secure the battery cover.



⚠ WARNING

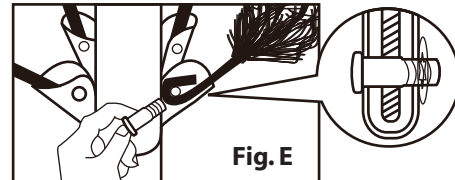
1. This product is powered by a lithium battery. Due to their small size, lithium batteries can easily be swallowed by children. Ingestion of such batteries has been known to cause death.
2. Do not expose light set to moisture.
3. Remove battery when not used for an extended period of time, or when depleted.
4. Dispose of used battery properly.
5. Use only CR2032 battery for the remote controller.
6. Clean the battery contacts prior to battery installation.
7. Do not dispose of batteries in fire. Batteries may explode or leak.
8. Small parts. Keep batteries out of reach of children.

For pre-lit trees, if the tree does not illuminate:

1. Please check to make sure that all plugs are properly connected and that the power cord is plugged into the wall outlet. Refer to assembly guide for instructions. (If the tree comes with a foot pedal, try stepping on the ON/OFF button.)
2. When multiple products are connected together, do not exceed the lowest of the indicated maximum wattage on the cord tag near the connected product's receptacle.

Loose Hinge Pin

1. Extra hinge pins are included for repairing the hinges. Place the branch into the slot of the bracket.
2. Insert a new hinge pin through the hole and secure using the retainer washer. (See Fig. E)



SPARE PARTS

Each tree includes hinge pins and washers.
If extra parts are needed, please contact our customer service centre.

CAUTION:

1. To reduce the risk of fire and electric shock:
 - a) Use only the power supply that was provided with this product;
 - b) Do not install on trees having needles, leaves or branch covering of metal or materials which look like metal, and
 - c) Do not mount or support strings in a manner that can cut or damage wire insulation.
2. Use only the adapter supplied with this product. Using a different adapter will damage the lights and may cause fire, or electrical shock hazards.
3. The controller and remote controller (if included) can only be used with this product.

This product carries a five (5) year warranty against defects in workmanship and materials. Noma Canada agrees to replace a defective product, within the stated warranty period, when returned to the place of purchase with proof of purchase. This product is not guaranteed against wear or breakage due to misuse and/or abuse.

Made in China
Imported by
Noma Canada, Toronto, Canada M4S 2B8
DATE CODE: 22322