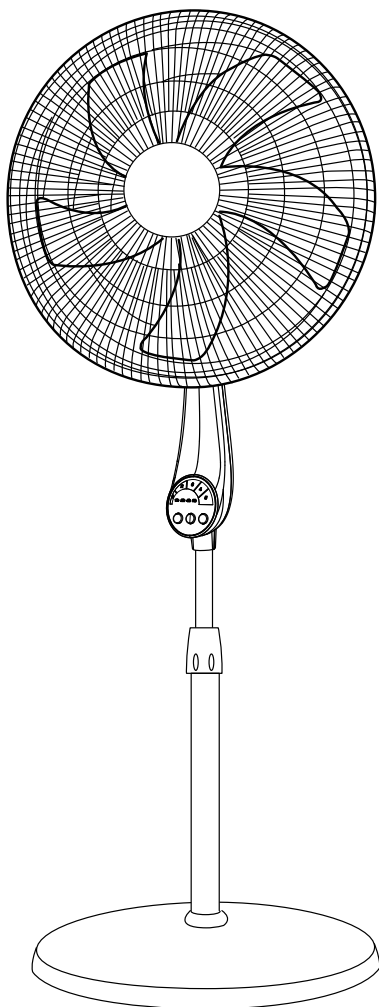


# NOMA<sup>®</sup>

16" (40.6 cm) Digital Oscillating  
Pedestal Fan

PRODUCT NO. 143-0039-0



**USER MANUAL**

————— READ AND SAVE THESE INSTRUCTIONS. —————

## TABLE OF CONTENTS

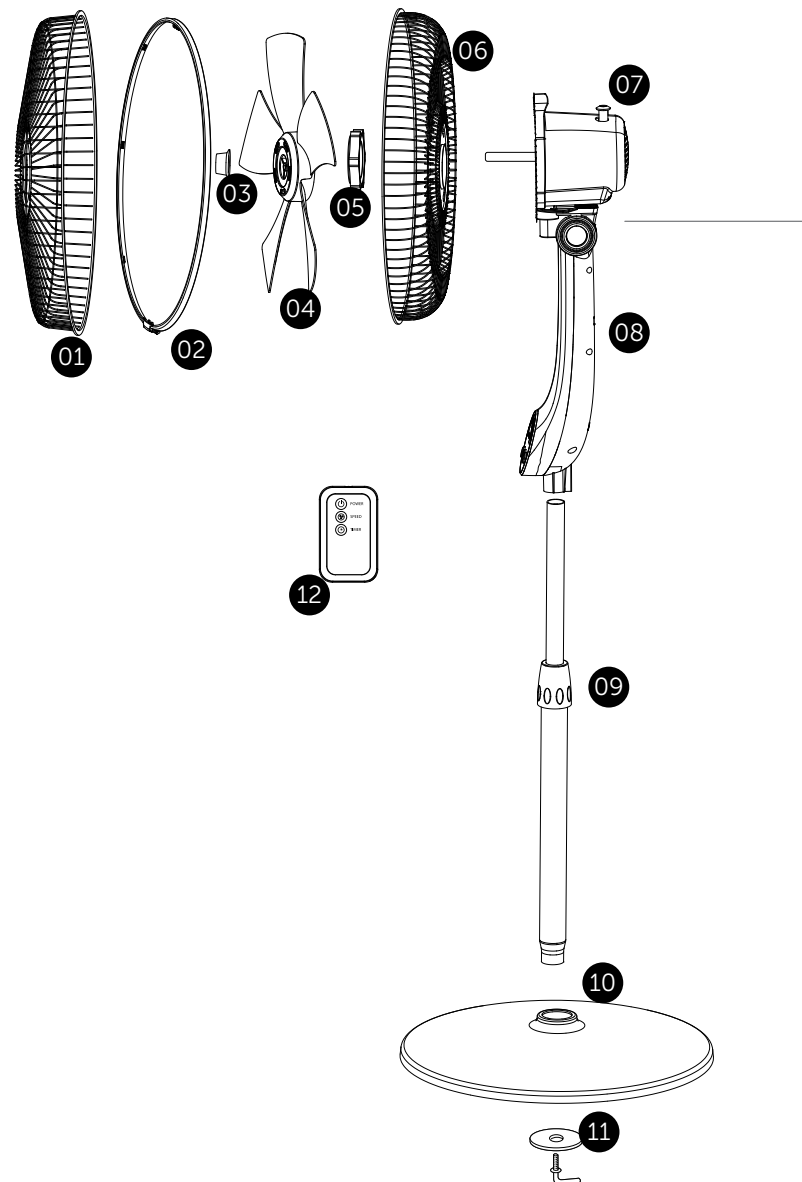
---

01. KNOW YOUR PEDESTAL FAN	3
02. ASSEMBLY	5
03. OPERATING INSTRUCTIONS	6
04. REMOTE CONTROL	7
05. CLEANING INSTRUCTIONS	8
06. PRODUCT SPECIFICATIONS	9
07. TROUBLESHOOTING	10
08. SAFETY / CAUTIONS	11
09. WARRANTY & DISPOSAL	13

## KNOW YOUR STAND FAN FEATURES

# 01

- 01. FRONT GRILLE
- 02. GRILLE PROTECTIVE RING
- 03. BLADE KNOB
- 04. BLADE
- 05. REAR GRILLE MOUNTING NUT
- 06. REAR GRILLE
- 07. OSCILLATING KNOB
- 08. CONTROL PANEL
- 09. HEIGHT ADJUSTER
- 10. BASE
- 11. BASE LOCKING MECHANISM
- 12. REMOTE CONTROL

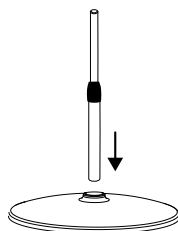


# 02

## HOW TO ASSEMBLE SET UP DIRECTIONS

### HOW TO ASSEMBLE

- Place the base on a flat surface. Remove the locking mechanism from the pole and insert the pole onto the base.
- Turn over the base with the pole inserted and secure by turning the locking mechanism clockwise until completed fastened.
- Place the motor assembly and control panel onto the extension pole and secure by turning the assembly knob clockwise.
- Remove the rear grille mounting nut by turning it counter-clockwise.
- Place the rear grille onto the motor housing aligning the 3 raised knobs on the top of the motor housing with the 3 holes on the grille.
- Place the rear grille mounting nut and tighten turning clockwise.
- Align the blade onto the shaft and secure it by tightening the blade knob counter-clockwise.
- Fix the front grille and the rear grille with the circlip and fasten the ring around the grille. You will hear a click sound around the grille.
- Use the grille ring clip to tighten the fan grille.
- Secure further with the screw and tighten with a screwdriver.



# 03

## OPERATING INSTRUCTIONS CONTROLS AND SETTINGS


1. Make sure that the fan is on a firm, level surface.
2. Make sure the speed control is at OFF position.
3. Plug the power cord into a socket.

On/Off: 

To turn fan on, press the Power button.

Sound Level/Speed Control: 

Press the Fan button repeatedly to change level. This fan has up to five speeds to select from.

Auto-off Timer: 

This setting will automatically turn your fan off after 1, 2, 4, or 8 hrs.

1 hour: Press one time; 2 hours: Press two times; 4 hours: Press three times; 8 hours: Press four times. Turn Timer off: Press five times or press Power button

4. Oscillation can be activated by pushing the Oscillating Knob down and the fan can be made to operate in a stationary position by gently pulling up the knob.

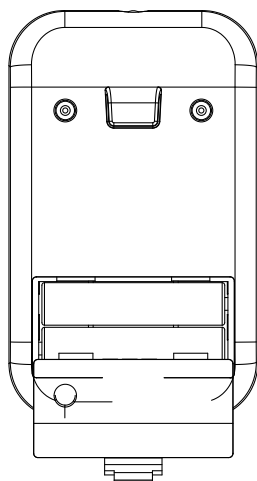
## OPERATING INSTRUCTIONS

### REMOTE CONTROL

---

# 04

1. Install batteries (not supplied) as shown. The battery is size "AAA".
2. All the functions performed with the Remote Control work identically to the Manual Controls.
3. Do not mix old and new batteries. Do not mix alkaline, standard (carbon-zinc) or rechargeable (nickel-cadmium) batteries.
4. DO NOT DISPOSE OF BATTERIES IN FIRE. BATTERIES MAY EXPLODE OR LEAK.



## CLEANING INSTRUCTIONS

### CARE & MAINTENANCE

---

# 05

1. Be sure your fan is in the OFF position.
2. Unplug the fan before cleaning.
3. To clean inlet and outlet ribs, use a common household vacuum.
4. Do not use water to clean these parts of the fan.
5. Do not disassemble for cleaning.
6. Do not immerse the fan in water and never allow water to enter the motor housing.
7. Do not use gasoline, paint thinner or other chemicals to clean the fan.

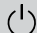
# 06

## PRODUCT SPECIFICATIONS OVERVIEW

Product Name	16" (40.6 cm) Digital Oscillating Pedestal Fan
Product No.	143-0039-0
Watt	60 W
Number of Fan Speeds	5
Net Weight	12 lb 4 oz (5.8 kg)
Dimension (L x W x H)	17 x 16 x 45–53" (43.5 x 40 x 113.5–135 cm)
cETL Listed	Yes
Input Voltage	AC 120 V   60 Hz

# 07

## TROUBLESHOOTING COMMON PROBLEMS

PROBLEM	SOLUTIONS
Unit does not power on.	<ul style="list-style-type: none"> <li>• Ensure unit is plugged into a working power outlet.</li> <li>• Check that the Power Button  is on.</li> </ul>
Unit is not producing desired amount of airflow.	<ul style="list-style-type: none"> <li>• Ensure nothing is blocking the grille.</li> </ul>

## SAFETY / CAUTIONS

### SAFETY CONCERNS

---

Read and save these important safety instructions before using this fan. When using electrical appliances, basic safety precautions should always be followed including the following:

**WARNING** - To reduce the risk of fire or electric shock, do not use this product with any solid state speed control device. To reduce the risk of fire or electric shock and injury to persons, do not use in a window.

- Use this fan only as described in this manual. Other uses not recommended may cause fire or electric shock.
- This product is intended for HOUSEHOLD USE ONLY and not for commercial, industrial or outside use. To protect against electric shock, do not place fan in window, immerse unit, plug or cord in water, or spray with liquids.
- Unplug the fan from the outlet when not in use, when moving fan from one location to another and before cleaning.
- Do not operate the fan in the presence of explosive and/or flammable fumes.
- Do not place the fan or any parts near an open flame, cooking or other heating appliance.
- Avoid contact with moving fan parts.
- To disconnect, grip the plug and pull it from the wall outlet. Never yank the cord.
- The use of attachments is not recommended and may cause hazards.

- Always use on a dry, level surface.
- Do not operate if the fan housing is removed or damaged.
- Do not operate any fan with a damaged cord or plug.
- If cord or plug is damaged, discard fan or return to an authorized service facility for examination and/or repair.
- Do not run cord under carpeting. Do not cover cord with throw rugs, runners, or similar coverings. Do not route cord under furniture or appliances.
- Arrange cord away from traffic area and where it will not be tripped over.
- The appliance is not to be used by children or persons with reduced physical, sensory or mental capabilities, or lack of experience and knowledge, unless they have been given supervision or instruction.
- Close supervision is necessary when any appliance is used by or near children. Children being supervised must not play with the appliance.

## WARRANTY & DISPOSAL

### ENVIRONMENTALLY FRIENDLY

---

#### 1 YEAR LIMITED WARRANTY

This NOMA product carries a 1 year warranty against defects in workmanship and materials. At its discretion, Noma Canada agrees to have any defective part(s) replaced free of charge within the stated warranty period, when returned with proof of purchase. This product is not guaranteed against wear or breakage due to misuse and/or abuse.



You can help protect the environment!

Please remember to respect local regulations. Dispose of the non-working electrical unit to an appropriate waste disposal centre.





Imported by/Importé par  
Noma Canada, Toronto, Canada M4S 2B8  
Made in China | Fabriqué en Chine  
1-866-827-4985