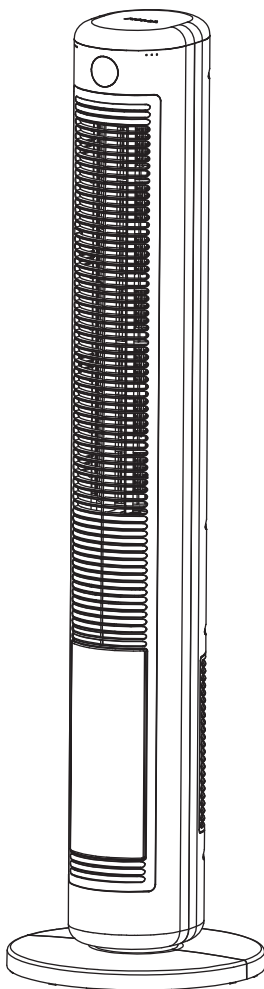


NOMA[®]

TOWER FAN HEATER

PRODUCT NO. 143-0013-0



USER MANUAL

— READ AND SAVE THESE INSTRUCTIONS —

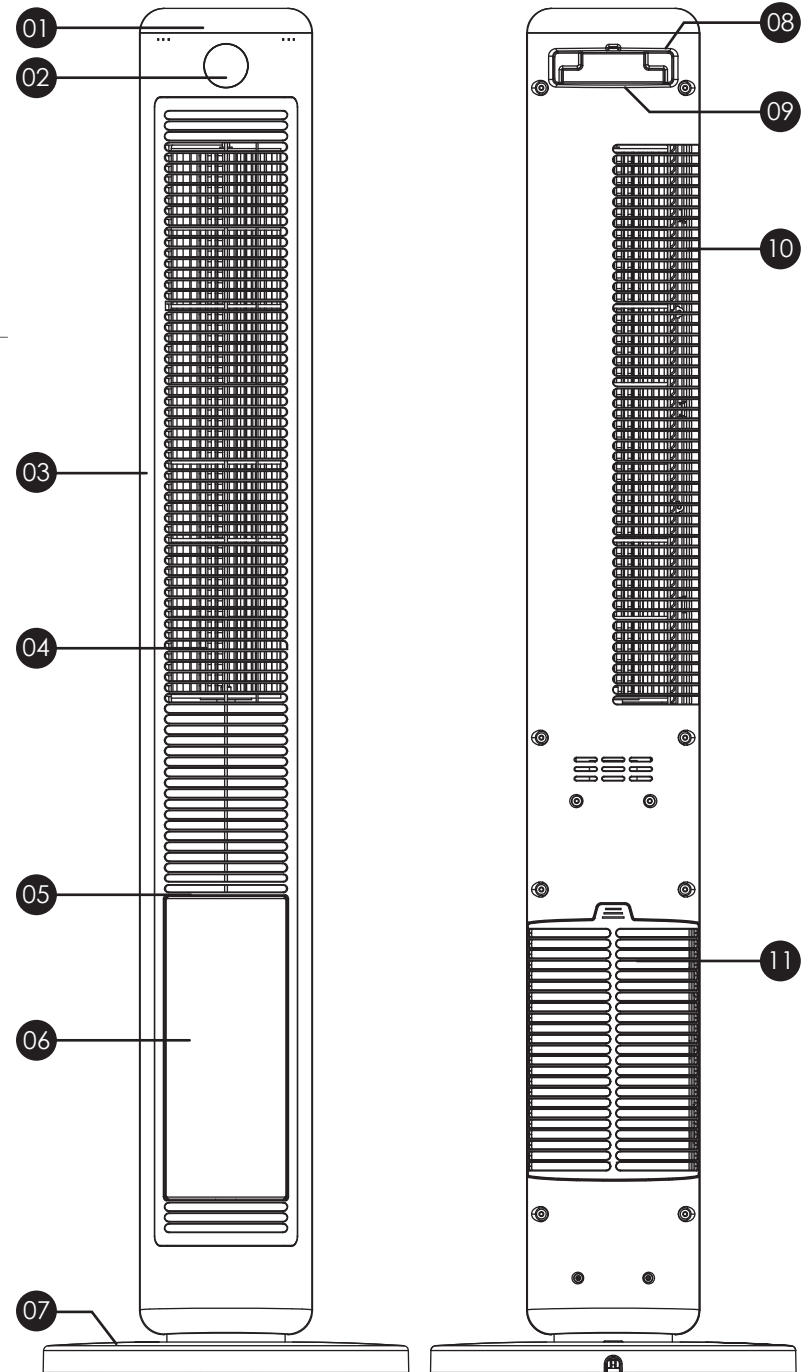
TABLE OF CONTENTS

01. KNOW YOUR FAN	3
02. OPERATING INSTRUCTIONS	5
03. ASSEMBLY INSTRUCTIONS	11
04. CLEANING INSTRUCTIONS	13
05. PRODUCT SPECIFICATIONS	14
06. SAFETY / CAUTIONS	15
07. WARRANTY AND DISPOSAL	17

KNOW YOUR FAN FEATURES

01

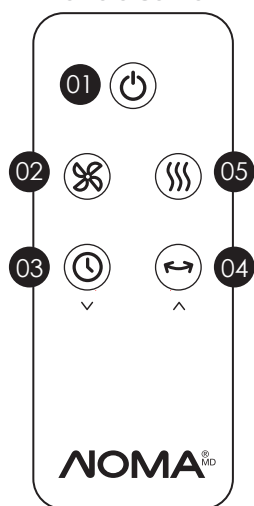
- 01. TOUCH CONTROL PANEL
- 02. DISPLAY WINDOW
- 03. FRONT HOUSING
- 04. AIR-OUT VENT
- 05. HEATER LED INDICATOR
- 06. HEATER-OUT METAL VENT
- 07. BASE
- 08. REMOTE CONTROL HOLDER & HANDLE
- 09. REMOTE CONTROL
- 10. REAR HOUSING WITH AIR-IN VENT
- 11. HEAT AIR-IN VENT



OPERATING INSTRUCTIONS CONTROLS & LED DISPLAY

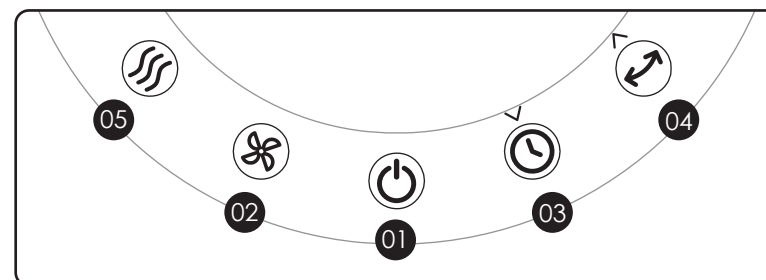
02

Remote Control

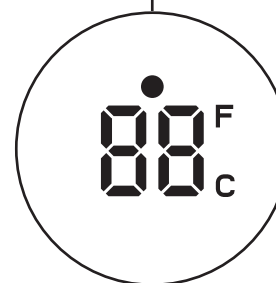


01. POWER ON/OFF
(HOLD FOR 3 SECONDS TO CYCLE 50% BRIGHTNESS / SLEEP MODE / FULL BRIGHTNESS)
02. FAN SPEED SETTING
03. TIMER FUNCTION SETTING
(HOLD FOR 3 SECONDS TO ENTER THE CHILD LOCK MODE)
(TEMPERATURE DECREASE SETTING WHEN IN HEATER AUTO MODE)
04. OSCILLATION FUNCTION ON/OFF
(TEMPERATURE INCREASE SETTING WHEN IN HEATER AUTO MODE)
05. HEATER MODE SETTING

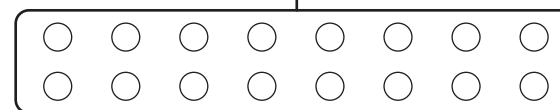
Control Panel



Power Indicator and Digital Display



Heater LED Indicator



OPERATING INSTRUCTIONS

CONTROLS AND SETTINGS

After plugging the device into a power outlet, there will be a "beep" sound, the power indicator light will turn on, and the unit will enter standby mode.

The function of Fan Mode and Heating Mode cannot be turned on at this time. Press the Power Button to turn on the device.

Heater LED display when works,

- 01. 88 LED all brightness + Heater LED all brightness.
- 02. 88 LED in night mode 50% brightness + Heater LED 50% brightness.
- 03. 88 LED in sleep mode (display off) + Heater LED 50% Brightness.

01. Power Button

In standby mode, press the Power Button and the digital display will display the current room temperature (the default is Celsius). In the power-on mode, press the Power Button again to turn the unit off and it will enter standby mode.

If it is in the Heater Mode before it is turned off, the heating motor will be turned off after a delay of 30 seconds to ensure proper shutdown.

When the unit is turned off, then powered on again, the previous working mode before shutdown is not memorized.

Hold the Power Button for 3 seconds to cycle 50% brightness/sleep mode/full brightness.

02. Fan Speed Button

Press this button to cycle through the 5 different speeds: 1→2→3→4→5→0→1...

03. Timer Button

Press this button to cycle through the timer: 1H→2H→4H→6H→8H→0H→1H...

04. Oscillation Button

You can turn the oscillation function on/off by pressing this button under Fan or Heating Mode.

Display window will display 1° when osc on and 0° when osc off, it will return to display room temperature after finish setting.

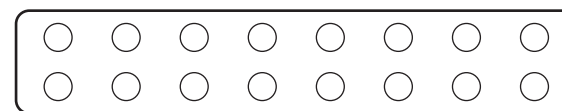
05. Heater Mode Button

Press this button to cycle through the heating modes: low heat → high heat → auto → off...

When setting the heater to low heat, the top row of LEDs above the heater will light up. When setting the heater to high heat, both rows of LEDs above the heater will light up.

The display window will return to display room temperature after finish setting.

To change the display to Fahrenheit, press and hold both the Fan Speed Button + Heater Mode Button for 3 seconds. Changing from Celsius to Fahrenheit and vice versa can only be done on the device, but not on the remote control.



Heater LED Indicator

OPERATING INSTRUCTIONS

CONTROLS AND SETTINGS

Thermostat Function

01. Use heater button to cycle Low-High-Auto-Off, and display window displays Lo-HI-AU and display off to cycle.
02. When set to AUTO mode, the display window will display AU for 3 seconds and flash the default temperature 16°C(60°F). To set temp by pressing button timer/decrease or button oscillation/increase, temperature will be changed in 2°C (2°F) between 16°–34°C (60°F–93°F). The temperature will be set and stop flashing after 3 seconds and the screen will revert back to displaying the current room temperature.

Celsius Mode

01. If room temperature is -3°C than set temperature, output power is HIGH setting, both rows of LEDs above the heater will light up
02. If room temperature is -1 to -2°C than set temperature, output power is LOW setting, 1 row of LEDs above the heater will light up
03. If room temperature is +1°C than set temperature, the heater will stop heating and the fan will stop operating in 30 seconds, the row of LEDs above the heater will turn off. The red power indicator will be on and 88 display will show current room temp.

Fahrenheit Mode

01. If room temperature is -6°F than set temperature, output power is HIGH setting, both rows of LEDs above the heater will light up
02. If room temperature is -2 to -5°F than set temperature, output power is LOW setting, 1 row of LEDs above the heater will light up
03. If room temperature is +2°F than set temperature, the heater will stop heating and the fan will stop operating in 30 seconds, the row of LEDs above the heater will turn off. The red power indicator will be on and display window will show current room temp.
04. When wanted temperature and works, the timer button and osc button revert back to original setting function. If user want to reset the wanted temperature when it is in Auto mode, user should press and hold the heater button for 3 seconds, the display window will display AU for 3 seconds and flash the default temperature to reset the wanted temperature again.
05. User can press heater button or turn off the heater to quit AU mode.

SAFETY FEATURES

01. Child Lock Function

While in use for Fan or Heater Mode, press and hold the Timer Button for 3 seconds to apply the child lock mode. Child lock mode prevents any of the buttons from being pressed. To release the child lock, press and hold the Timer Button for 3 seconds to release it, or unplug the power and turn it on again.

02. Tip-over Switch Protection

With the tip-over switch, all actions will stop when the unit tips over. This is to prevent damage and added as a safety feature. In the heating mode, the heater motor will be turned off after a delay of 30 seconds. Press the Power Button to turn the device back on to resume operation.

When the child lock is activated, the unit will stop running and the child lock will not be released.

03. Overheat Protection

In Heater Mode, if the sensor reads a temperature above 55 °C, the heating element will turn off and the heater motor will also shut down after 30 seconds. In this state, unplug the unit and wait for it cool down for 5-10 minutes. Then, plug the device back in again to turn on the unit.

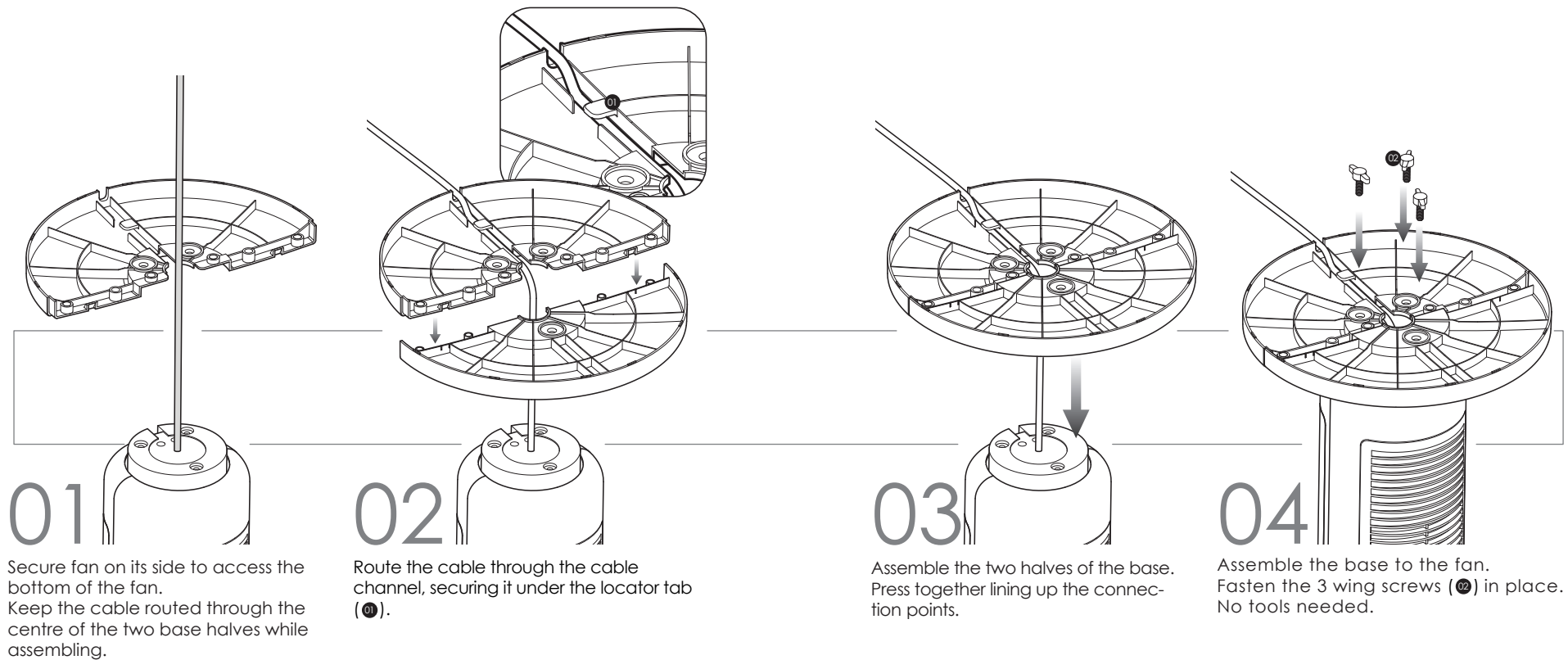
04. Auto Shut OFF

In Heater Mode, it will automatically shut off after 15 hours as a safety feature. The heating element will turn off at first and heater motor will also shut down after 15 seconds. All the indicator lights will turn off and unit will enter standby mode.

03

ASSEMBLY INSTRUCTIONS BASE ASSEMBLY

WARNING: Do not use this fan before completing assembly.



04

CLEANING INSTRUCTIONS CARE & MAINTENANCE

Before Any Cleaning

01. The Heat is turned OFF.
02. Disconnect power supply at source by removing plug from power outlet.

Cleaning

01. Interior dust can often be removed by using a vacuum cleaner with a crevice tool attachment.
02. Do not use cleaning liquid or other chemicals to spray on the unit.
03. To clean enclosure, use a clean, soft and lightly damp cloth to gently wipe off the dirt from the surface of the unit. Be sure not to wet the Heating Element and the switches. Allow the unit to dry completely before using it.

Storage

01. Perform the cleaning procedures described in "CLEANING INSTRUCTIONS".
02. Wipe all parts to dry.
03. Pack the heater and the power cord in a plastic bag and store it in a cool, dry place.



WARNING: Any other servicing should be performed by an authorized service representative.

CAUTION: Do not allow water to run into the interior of the heater as this could create a fire or electric shock hazard.

05

PRODUCT SPECIFICATIONS OVERVIEW

Product Name	Tower Fan Heater
Product Model	143-0013-0
Voltage	120 V
Frequency	60 Hz
Wattage	1500 W
Weight	5.6 kgs
Dimensions (L x W x H)	33 x 33 x 112 cm

SAFETY / CAUTIONS

IMPORTANT SAFETY INSTRUCTIONS

PLEASE READ ALL INSTRUCTIONS BEFORE USING THIS HEATER

When using electrical appliances, basic precautions should always be followed to reduce the risk of fire, electric shock, and injury to persons, including the following:

When switching on the appliance for the first time, allow it to run at full power for about two hours to get rid of the unpleasant smell. Make sure that the room in which the appliance is located is well ventilated during this operation. It is normal for the appliance to emit small cracking sounds when you turn it on if the first time.

- Read all instructions before using this heater.
- This heater is hot when in use. To avoid burns, do not let bare skin touch hot surfaces. Use handle when moving the unit. Keep combustible materials, such as furniture, pillows, bedding, papers, clothes and curtains at least 3 feet (0.9 meters) from the front and top of the radiator and keep them away from the sides and rear. Keep the rear grille away from walls or drapes so as not to block the air intake.
- Extreme caution and supervision is necessary when any heater is used near children or invalids and whenever the heater is left operating and unattended.
- Always unplug heater when not in use.
- Do not operate any heater with a damaged cord or plug or after the heater malfunctions, has been dropped or damaged in any manner. Discard heater, or return the heater to an authorized service facility for examination, electrical or mechanical adjustment or repair.
- Do not use outdoors.
- This heater is not intended for use in bathrooms, laundry areas and similar indoor locations. Never locate heater where it may fall into a bathtub or other water container.
- Do not run cord under carpeting. Do not cover cord with throw rugs, runners or the like. Do not route cord under furniture or appliances. Arrange cord away from traffic area and where it will not be tripped over.
- To disconnect the heater, turn controls to OFF, then remove the plug from the outlet.
- Connect to properly polarized outlets only.
- Do not insert or allow foreign objects to enter any ventilation or exhaust opening as this may cause electric shock, fire or damage to the heater.
- To prevent possible fire, do not block air intakes or exhaust in any manner. Do not use on soft surfaces, like a bed, where openings may become blocked.
- A heater has hot or arcing or sparking parts inside. Do not use it in areas where gasoline, paint or flammable liquids are used or stored.

- Use this heater only as described in this manual. Any other use not recommended by the manufacturer may cause fire, electric shock, injury to persons or other damage to property.
- To prevent overload and blown fuses, be sure that no other appliance is plugged into the same outlet (receptacle) or into another outlet (receptacle) wired into the same circuit.
- It is normal for the heater's plug and cord to feel warm to the touch. A plug or cord which becomes hot to the touch or becomes distorted in shape may be a result of a worn electrical outlet. Worn outlets or receptacles should be replaced prior to further use of the heater. Plugging heater into a worn outlet/receptacle may result in overheating of the power cord or fire.
- Ensure the heater is on a stable, secure surface to eliminate the potential of tipping it over.
- Always plug heaters directly into a wall outlet/receptacle. Never use with an extension cord or relocatable power tap (outlet/power strip).
- Be sure that the plug is fully inserted into appropriate receptacle. Please remember that receptacles also deteriorate due to aging and continuous use: check periodically for signs of overheating or deformations evidenced by the plug. Do not use the receptacle and CALL your electrician.
- Check that neither the appliance nor the power cable has been damaged in any way during transportation.
- Make sure that no pieces of polystyrene or other packaging material have been left between elements of the appliance. It may be necessary to pass over the appliance with a vacuum cleaner.

SAVE THESE INSTRUCTIONS



CAUTION: To prevent electric shock, match wide blade of plug to wide slot, fully insert.

DANGER: High temperatures may be generated under certain abnormal condition. Do not partially or fully cover or obstruct the front of this heater.

NOTE: There may be a trace of smoke or odour when unit is first operated. Do not be alarmed. This indicates that a drop of oil fell on the heating coil during the manufacturing process. It will quickly evaporate and should not re-occur.

WARRANTY AND DISPOSAL

ENVIRONMENTALLY FRIENDLY

1 YEAR LIMITED WARRANTY

This NOMA® product carries a 1 year warranty against defects in workmanship and materials. At its discretion, NOMA Canada agrees to have any defective part(s) replaced free of charge within the stated warranty period, when returned with proof of purchase. This product is not guaranteed against wear or breakage due to misuse and/or abuse.

Please note that changes or modifications of this product is not expressly approved by the party responsible for compliance could void the user's authority to operate the equipment.



You can help protect the environment!

Please remember to respect local regulations. Dispose of the non-working electrical unit to an appropriate waste disposal centre.



Imported by/Importé par
NOMA Canada, Toronto, Canada M4S 2B8
Made in China | Fabriqué en Chine
1-866-827-4985