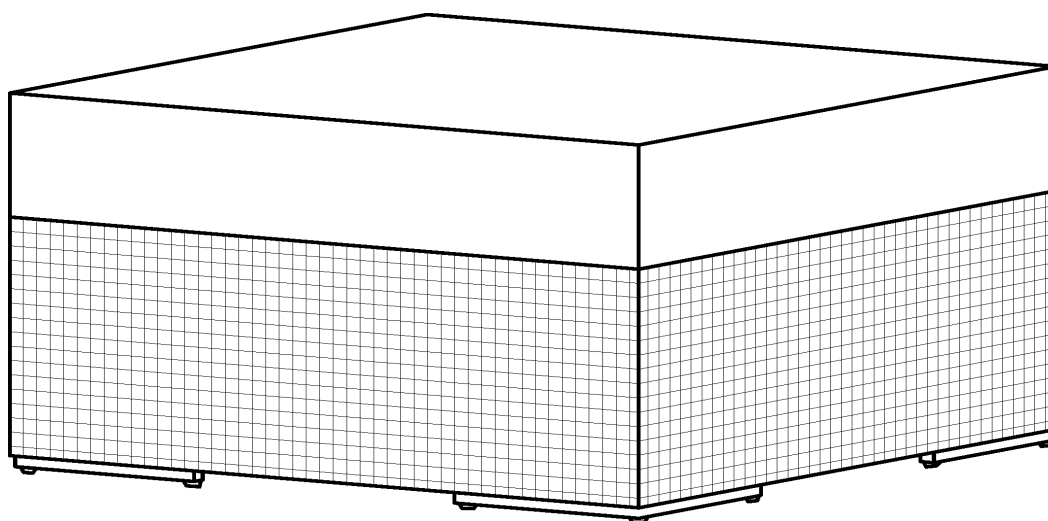


CANVAS^{TM/MC}

TOFINO COLLECTION OTTOMAN

MODEL NO. 088-1922-2



ASSEMBLY INSTRUCTIONS

Toll-free: 1-888-670-6684

IMPORTANT: Please read this manual carefully before beginning assembly of this product.
Keep this manual for future reference.

Table of Contents	3
Important Safety Instructions	3
Parts List	4
Assembly	5
Cleaning and Maintenance	8
Specifications	8
Warranty	9



Warning! To reduce the risk of serious injury, read the following safety instructions before assembling and using the product.

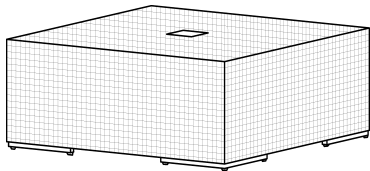
Caution! Always keep children under close supervision while they are using or around this product.

- The product should be placed on flat ground.
- Any assembly or maintenance of the product must be carried out by adults only.
- Ensure necessary manpower when assembling or moving the product.
- Some parts may contain sharp edges. Wear protective gloves if necessary.
- Keep children and pets away while setting up the product.
- Repairing and replacing parts should be done by a qualified technician.
- Always remove the product in heavy wind conditions; otherwise it might tip over and cause damage to the product or injuries to passersby.
- If the product will not be used for a longer period (e.g. winter time), it should be stored in a clean, dry environment.
- Do not light any fires inside or near the product!
- Retain the original packaging to store the product.

IMPORTANT: Retain for future reference, and read carefully.

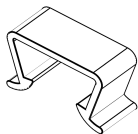
1

Ottoman - 1



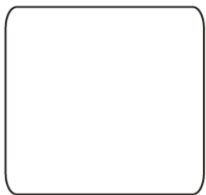
A

Connector - 2



2

Seat cushion - 1



CAUTION!

- The maximum load of this product is 264 lb (120 kg).
- Keep children away during assembly.
This product contains small parts which can be swallowed by children.
- Keep fingers away from places where they can be pinched or trapped.
- Do not attempt to assemble the product if any parts are missing.



Let us help you!
DO NOT RETURN YOUR PRODUCT TO THE STORE. CALL US FIRST!
1-888-670-6684

If you have questions regarding your product, require warranty assistance, or have damaged or missing parts, please call our customer service toll-free helpline. Contact us for assistance; we're here to help.

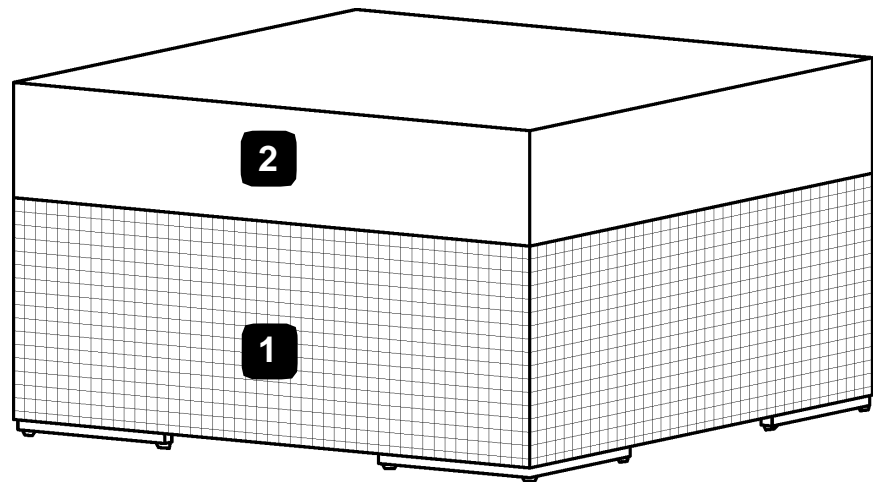
IMPORTANT: Please read and understand this manual before any assembly. Before beginning assembly of product, make sure all parts are present. Compare parts with packaging contents list. If any part is missing, or if you have any questions, contact the service centre at 1-888-670-6684 (toll-free).

Place all parts from the box in a cleared area and position them on the floor in front of you. Remove all packing materials and place them back into the box. Do not dispose of the packing materials until assembly is complete. Read each step carefully before beginning any assembly and make sure you understand each step. If you are missing a part, please call our toll-free number for assistance; 1-888-670-6684.

Step 1

Requires 1, 2

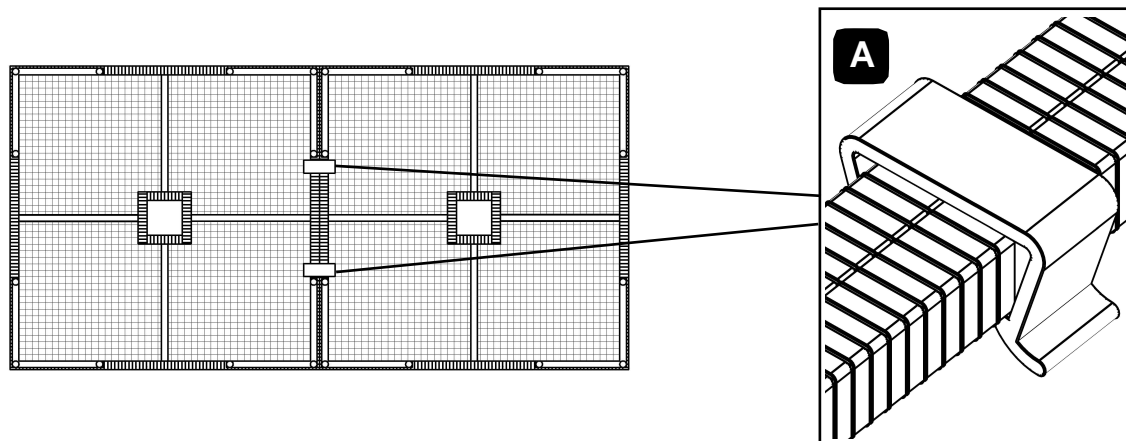
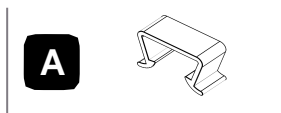
Place the seat cushion 2 on the ottoman 1.
Now your chair is ready for use.



Step 2

Requires 1, A

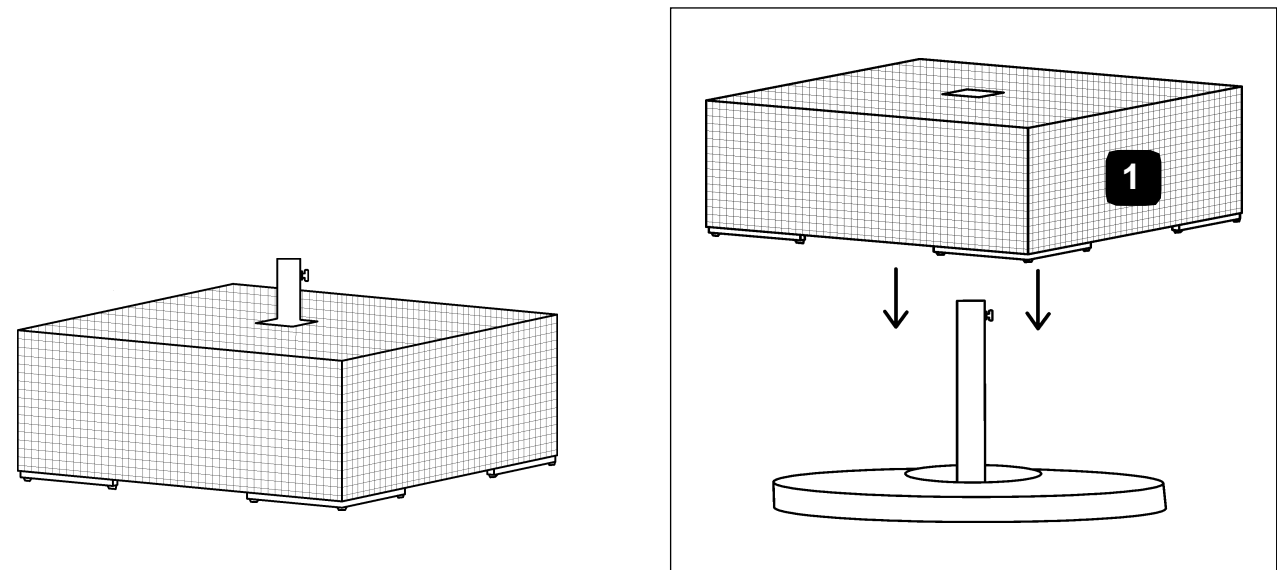
Use the connector A to lock the two chairs at the bottom to prevent movement.



Step 3

Requires 1

Place the ottoman 1 on the umbrella base.

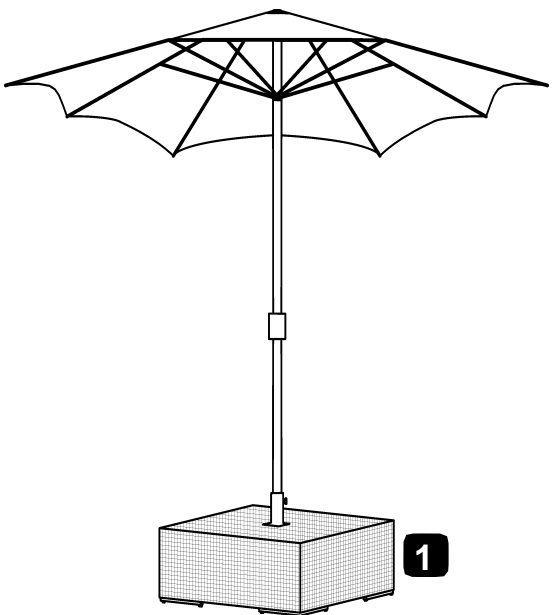


Attention: The umbrella base is not included in the product, additional purchase required.

Step 4

Requires 1

Insert the umbrella into the umbrella base hole when use.



Attention: The umbrella is not included in the product, additional purchase required.



CAUTION!

- Fabric colour may fade after prolonged exposure to light. Keep cushions indoors when not in use.

- To wash cushions: Spread the fabric and use a soft bristle brush to clean.
 - Always use a natural soap, never detergent;
 - Water should be cold to lukewarm, never more than 77 °F (25 °C);
 - Air-dry only; do not use spin cycle in washing machine.
- Do not use bleach, acid, or other abrasive cleaners on the product.

This CANVASTM product carries 5 year warranty on the aluminum frame. 1 year warranty on the remaining parts.
Trileaf Distribution agrees to replace the defective product free of charge within the stated warranty period, when returned by the original purchaser with proof of purchase. This product is not guaranteed against wear or breakage due to misuse and/or abuse.

Made in China

Imported by

Trileaf Distribution Trifeuil, Toronto, Canada M4S 2B8

Dimensions (L x W x H)	27 1/2 x 27 1/2 x 10 1/4"
	70 x 70 x 26 cm