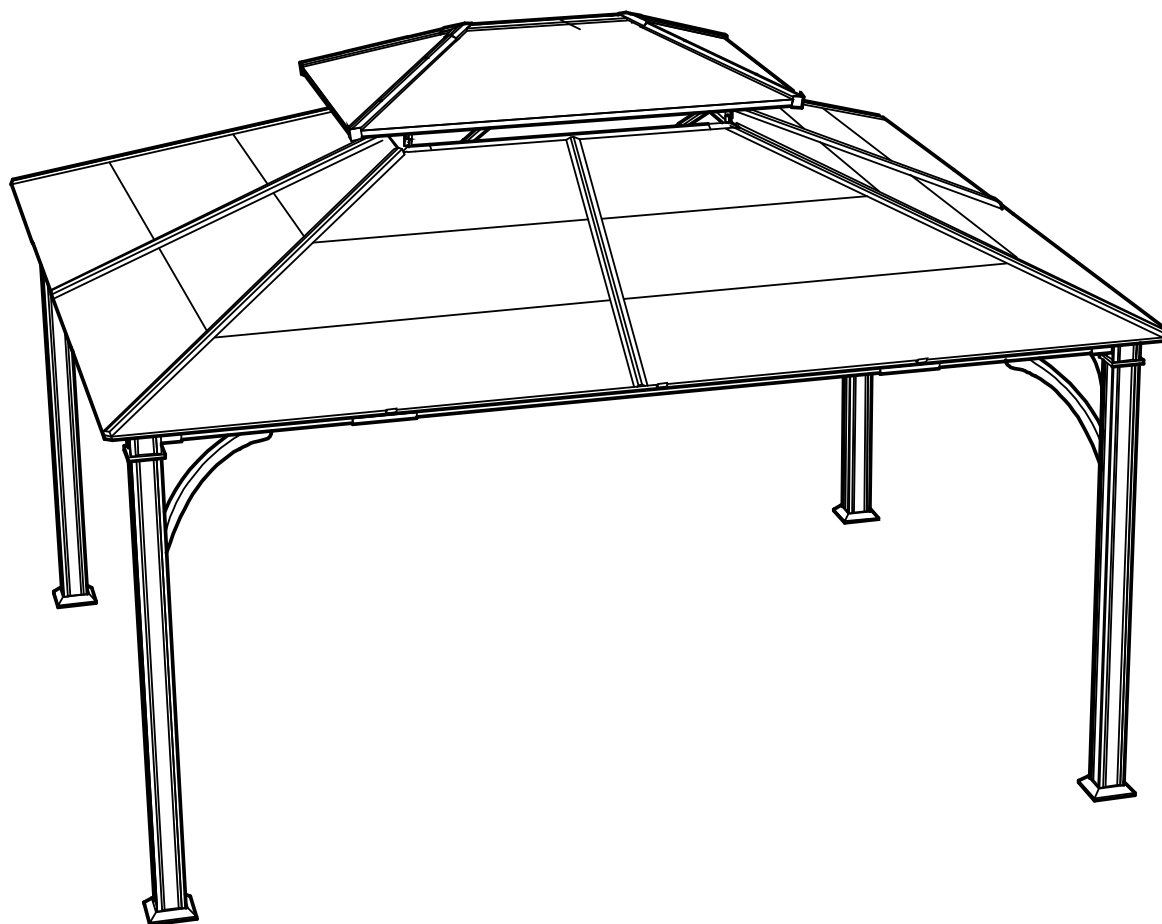


for LIVING™

Acadia Collection Gazebo

Model No. 088-1609-0



Assembly Instructions

Toll-free: 1-866-578-6569

IMPORTANT: Please read this manual carefully before beginning assembly of this product. Keep this manual for future reference.

Production Number:XXXXXXX

Table of Contents	3
Important Safety Instructions	3
Part List	4-9
General Requirements	10
Assembly	11-34
Cleaning and Maintenance	35
Technical Data	35
Warranty	35

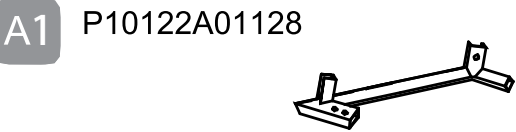


Warning! To reduce the risk of serious injury, read the following safety instructions before assembling and using the gazebo.

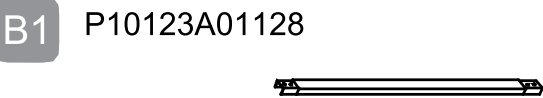
Caution! Always keep children under close supervision while they are playing around this product. Never leave children unattended. Keep pets away while setting up the gazebo.

Caution! Check municipal by-laws prior to installing the gazebo.

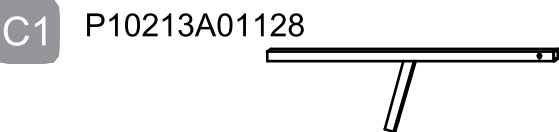
- This product is intended for domestic outdoor use only.
- The product should be placed and assembled on flat, horizontal ground.
- Consult with your local governing authority/local municipal codes regarding installation of temporary structures before assembly.
- Ensure there is enough clearance around the product. Before assembling the gazebo, make sure to leave a distance of not less than 6' (1.8 m) from any structures or obstructions, such as fences, garages, houses, overhanging branches, laundry lines, or electrical wires.
- Anchor the gazebo to the ground with stakes for added safety. Stakes are provided to secure the gazebo to the ground. If you wish to secure the gazebo to a concrete or wood surface, use anchors suited for these surfaces (anchors not included). Do not assemble the gazebo on sandy, muddy or loose soil, as stakes do not have enough anchorage in these types of soil.
- If more than one gazebo is set up, keep a minimum distance of 10' (3 m) between the gazebos.
- Any assembly or maintenance of the product must be carried out by adults only.
- Make sure there is sufficient manpower when assembling or moving the product.
- Some parts may contain sharp edges. Wear protective gloves if necessary.
- Check all nuts and bolts periodically for tightness. When required, tighten them.
- Repairing and replacing parts should be done by a qualified technician.
- This gazebo is intended for decorative and sunshade purposes only.
- Always disassemble the gazebo prior to experiencing heavy wind conditions, as it is not designed to withstand harsh weather, including high wind, rain, and snow and might tip over and could cause injury to bystanders.
- Do not hang any weights on the roof frame.
- Do not climb onto the roof of the gazebo. Doing so may cause the gazebo to fall down, thereby resulting in serious injury.
- During snow days, remove the snow at the top when the snow is thicker than 4" (10 cm).
- After a period of time, usually in 2–3 months, tighten all the bolts.
- After a period of use, rinse the ash on the top of gazebo using water. Avoid using acid or alkali wash lotion.
- After a few years, if the paint peels off, use paint of similar color. It is recommended to use outdoor paint.
- If the gazebo will not be used for a long period of time (e.g. during winter time), disassemble and store it in a clean, dry environment.
- Retain the original packaging to store the gazebo.



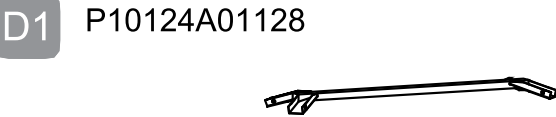
Big Top Frame - 2



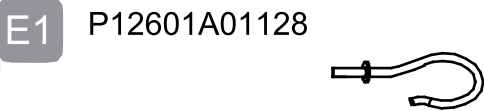
Big Top Bar - 2



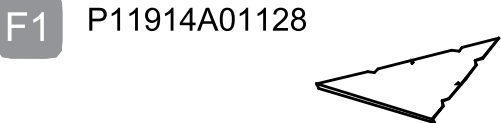
Small Top Support Beam - 4



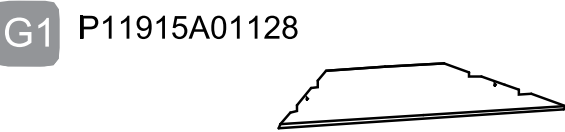
Small Top Connector - 1



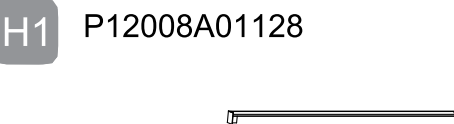
Hook - 1



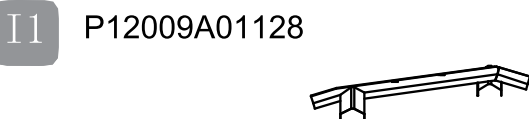
Top Roof Small Panel - 2



Top Roof Long Panel - 2



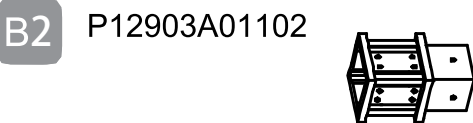
Small Top Cover - 4



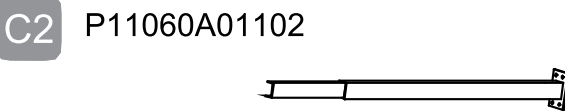
Small Top Roof Cover - 1



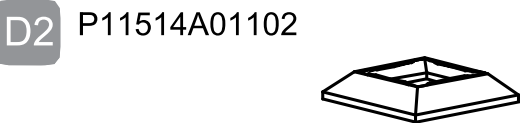
Post - 4



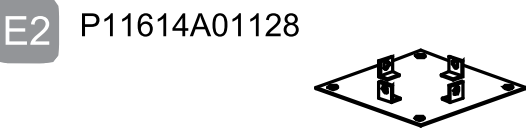
Post Connector - 4



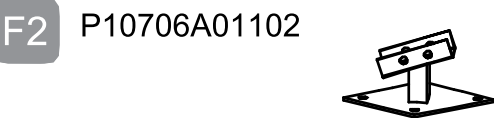
Beam Connector - 8



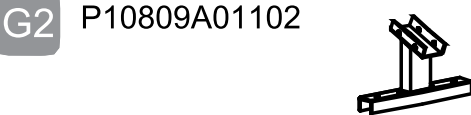
Base Cover - 4



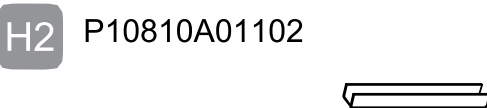
Base - 4



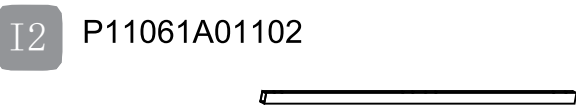
Slanting Bar Connector - 4



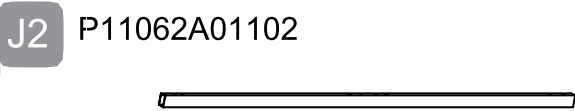
Upper Beam Connector - 12



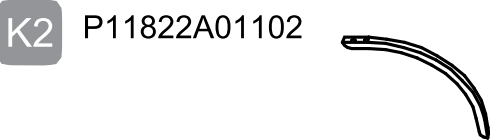
Lower Beam Connector - 8



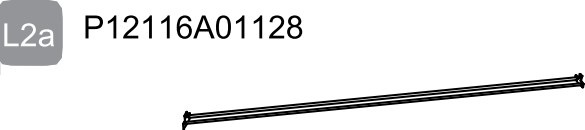
Short Beam - 2



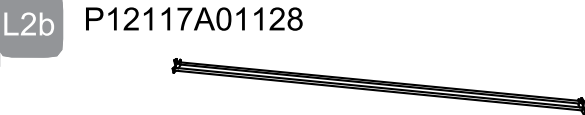
Long Beam - 2



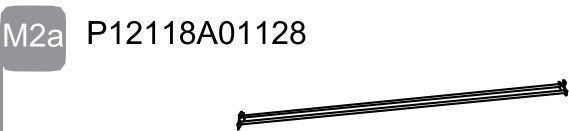
Arc Support - 8



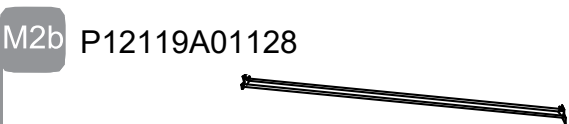
Long Pipe 1-2



Long Pipe 2 - 2

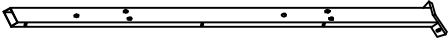


Short Pipe 1 - 2



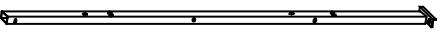
Short Pipe 2 - 2

A3 P10314A01128



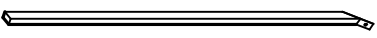
Top Slanting Bar - 4

B3 P10423A01128



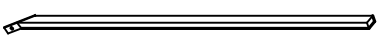
Top Beam 1-4

B4 P10424A01128



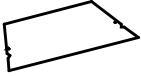
Top Beam 2-4

B5 P10425A01128



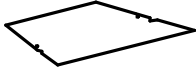
Top Beam 3-4

C3 P11916A01128



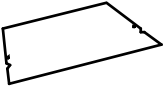
Long Side Left Roof Panel 1-2

D3 P11917A01128



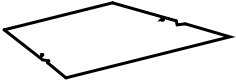
Long Side Right Roof Panel 1-2

E3 P11918A01128



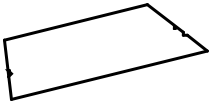
Long Side Left Roof Panel 2-2

F3 P11919A01128



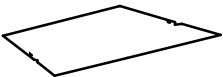
Long Side Right Roof Panel 2-2

G3 P11920A01128



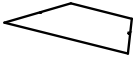
Long Side Left Roof Panel 3-2

H3 P11921A01128



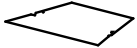
Long Side Right Roof Panel 3-2

I3 P11922A01128



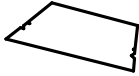
Short Side Roof Panel 1-2

J3 P11923A01128



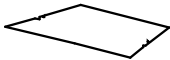
Short Side Left Roof Panel 2-2

K3 P11924A01128



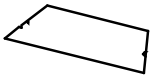
Short Side Right Roof Panel 2-2

L3 P11925A01128




Short Side Left Roof Panel 3-2

M3 P11926A01128




Short Side Right Roof Panel 3-2

N3 P12010A01128




Big Roof Panel Cover (Corner) 1-4

N4 P12011A01128



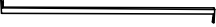
Big Roof Panel Cover (Corner) 2-4

O3 P12012A01128




Big Roof Panel Cover (Middle) - 4

W1 P13013A01128




Big Roof Top Beam (Short Side) 1-8

W2 P13014A01128




Big Roof Top Beam (Short Side) 2-2

W3 P13015A01128




Big Roof Top Beam (Short Side) 3-2

W4 P13016A01128




Big Roof Top Beam (Short Side) 4-2

W5 P13017A01128



Big Roof Top Beam (Short Side) 5-2


W6 P13018A01128



Big Roof Top Beam (Short Side) 6-4

X1


P13019A01128



Big Roof Top Beam
(Long Side) 1-8

X2


P13020A01128



Big Roof Top Beam
(Long Side) 2-2

X3


P13021A01128



Big Roof Top Beam
(Long Side) 3-2

X4


P13022A01128



Big Roof Top Beam
(Long Side) 4-2

X5


P13023A01128



Big Roof Top Beam
(Long Side) 5-2

X6


P13024A01128



Big Roof Top Beam
(Long Side) 6-4

Q1


P13025A01128



Small Roof Upper Short Side Beam -2

Q2


P13026A01128



Small Roof Lower Short Side Beam -2

R1


P13027A01128



Small Roof Upper Long Side Beam -2

R2

P13028A01128



Small Roof Lower Long Side Beam -2

AA

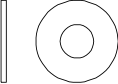
H09015C11



Bolt M6*15 -180+9 Spare

BB

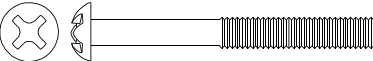
H19001C11



Flat Washer M6
(Large) - 408+23 Spare

CC


H09055C11



Bolt M6*55 -36+2 Spare

DD


H14001C11



Nut M6 -68+3 Spare

EE

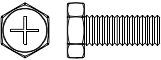
H09040C11



Bolt M6*40 -24+2 Spare

FF

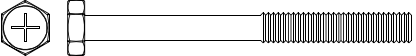
H02015C11



Bolt M6*15 -84+4 Spare

GG

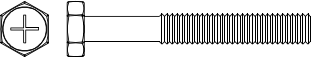
H02065C11



Bolt M6*65 -32+2 Spare

HH

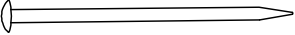
H02045C11



Bolt M6*45 -32+2 Spare

JJ

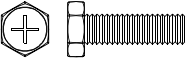
P12401A01001



Stake Ø 8*260 -16

KK

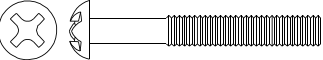
H02020C11



Bolt M6*20 -32+2 Spare

LL

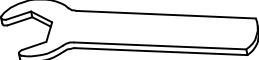
H09045C11



Bolt M6*45 -2

ZZ

H00001C12



Wrench M6 -2 Spare

**Caution!**

- Proper placement of the gazebo is essential. Do not place the gazebo underneath electrical lines.
- Keep children under close supervision while they are near this product. This product contains small parts which can be swallowed by children.
- Keep fingers away from places where they can be pinched or trapped.
- Do not attempt to assemble the gazebo if any part is missing.

**Let us help you!**

DO NOT RETURN YOUR PRODUCT TO THE STORE. CALL US FIRST!

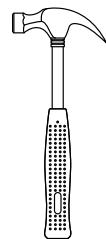
1-866-578-6569

If you have questions regarding your product, require warranty assistance, or have damaged or missing parts, please call our customer service toll-free helpline. Contact us for assistance; we're here to help.

IMPORTANT: Please read and understand this manual before any assembly. Before beginning the assembly of the product, make sure all parts are available. Compare parts with package contents list. If any part is missing, or if you have any questions, contact the service center at 1-866-578-6569 (toll-free).

Take all parts from the box and position them on a clean floor. Remove all packing materials and place them back into the box. Do not dispose of the packing materials until assembly is complete. Read each step carefully before beginning any assembly and make sure you understand each step.

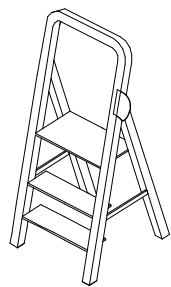
Needed for assembly: (The following tooling not included)



Hammer



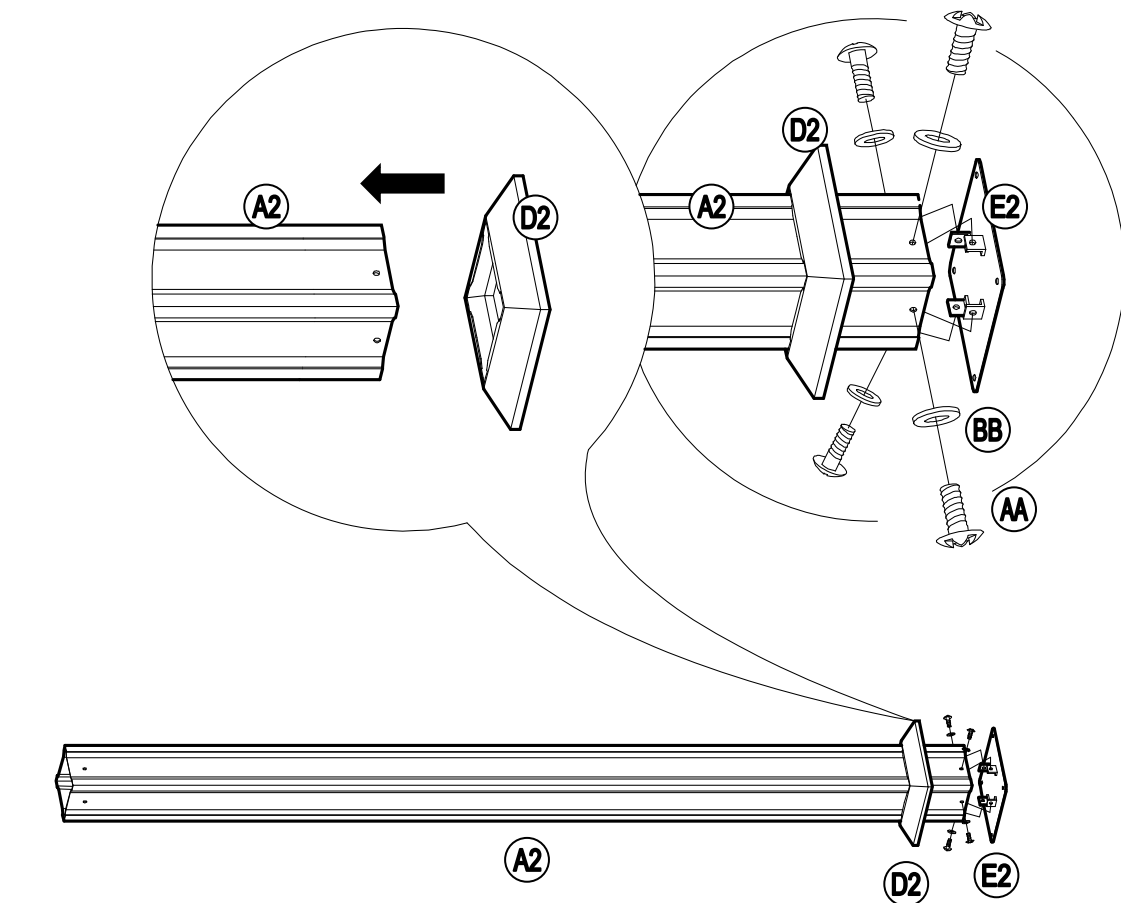
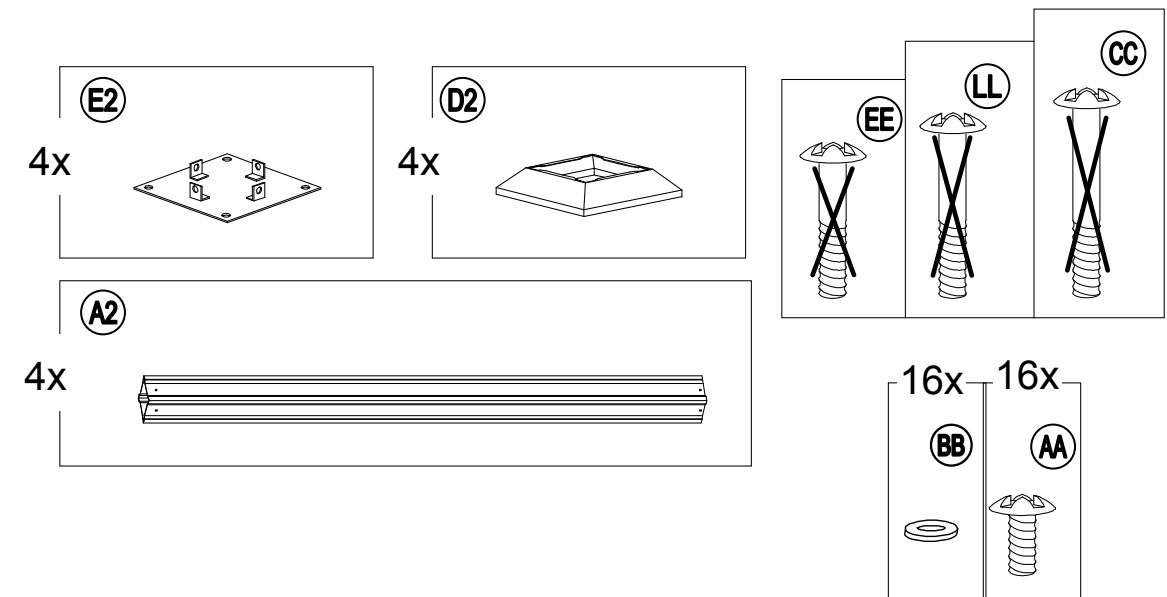
Screwdriver



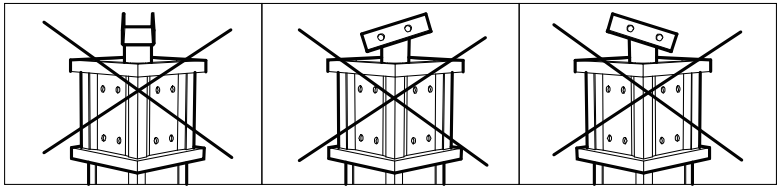
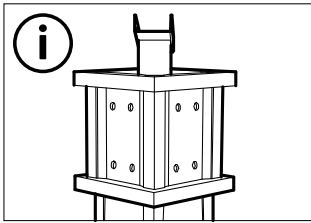
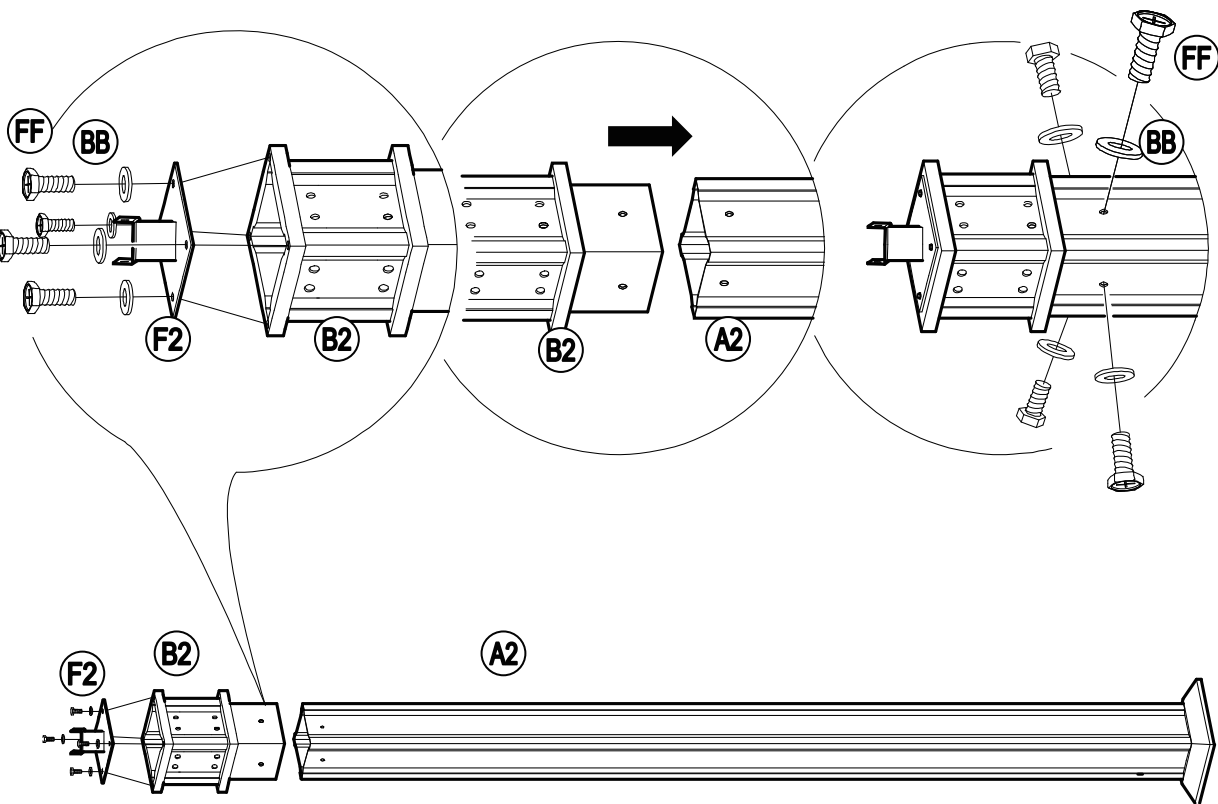
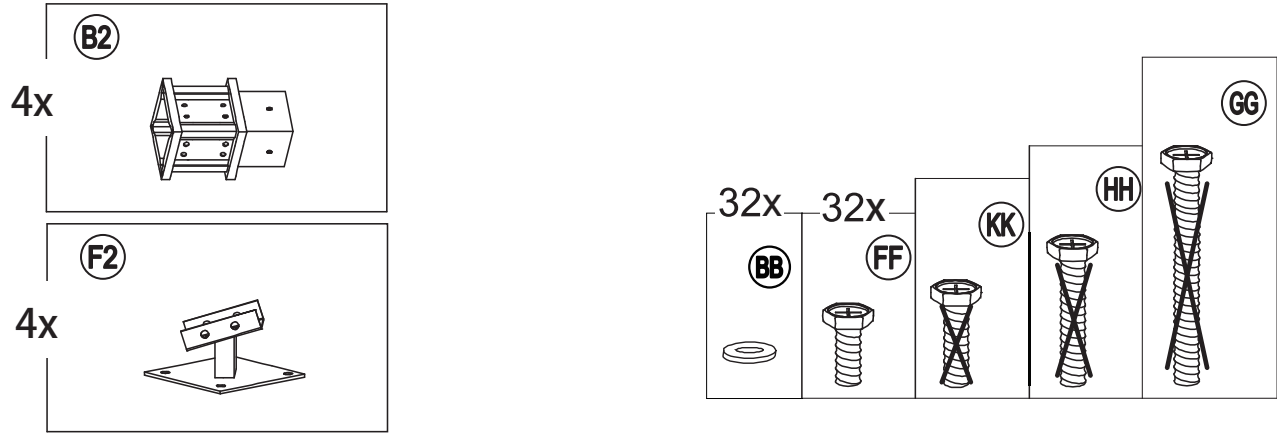
Ladders (6' / 2 mtall)



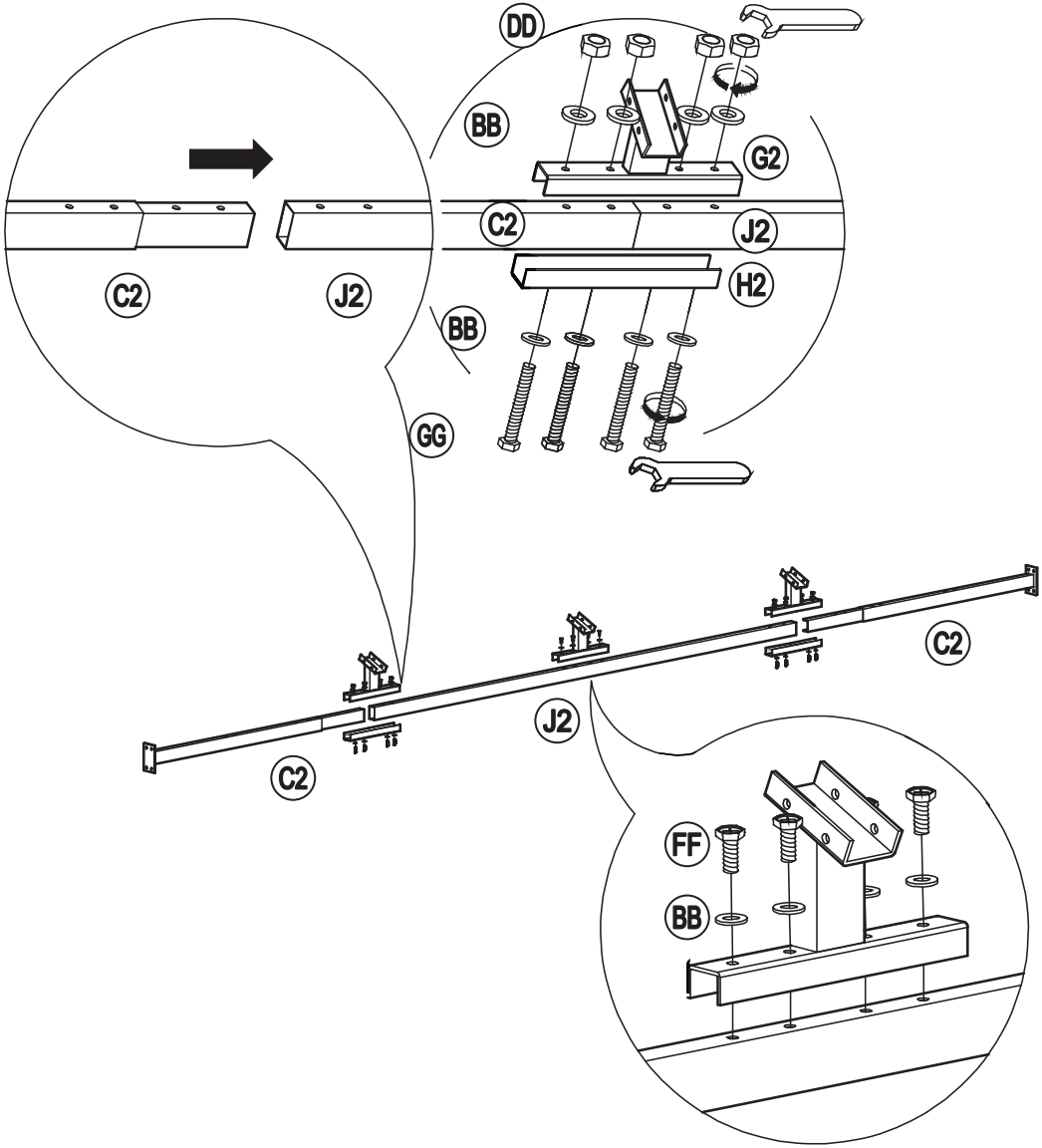
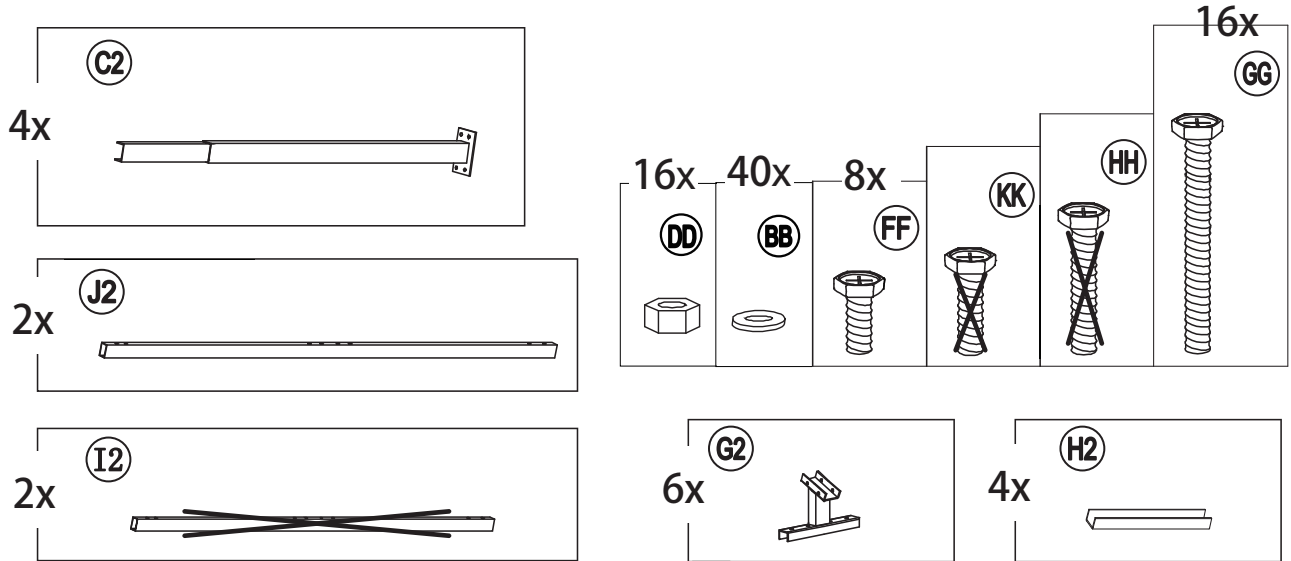
4 people

STEP 1

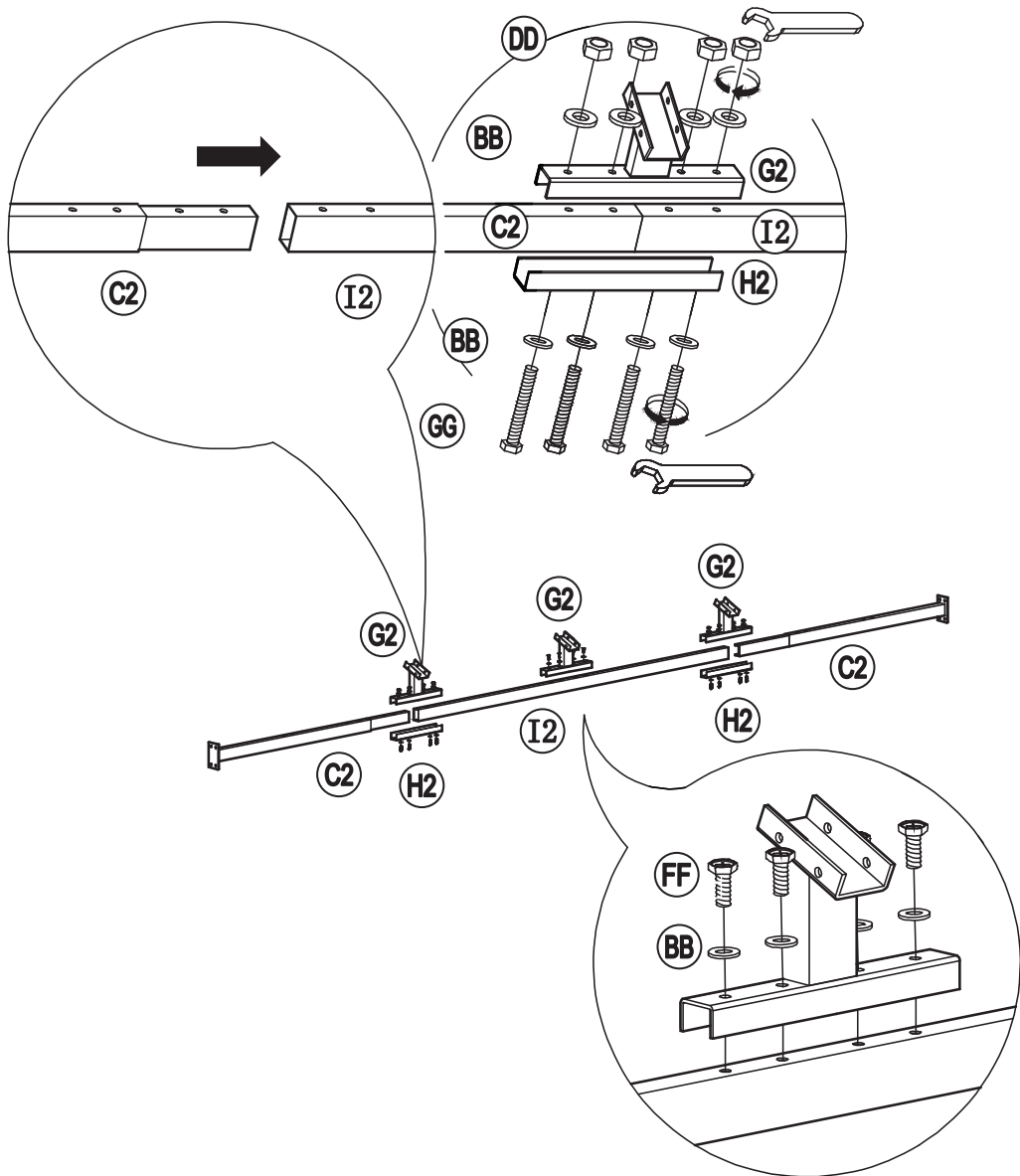
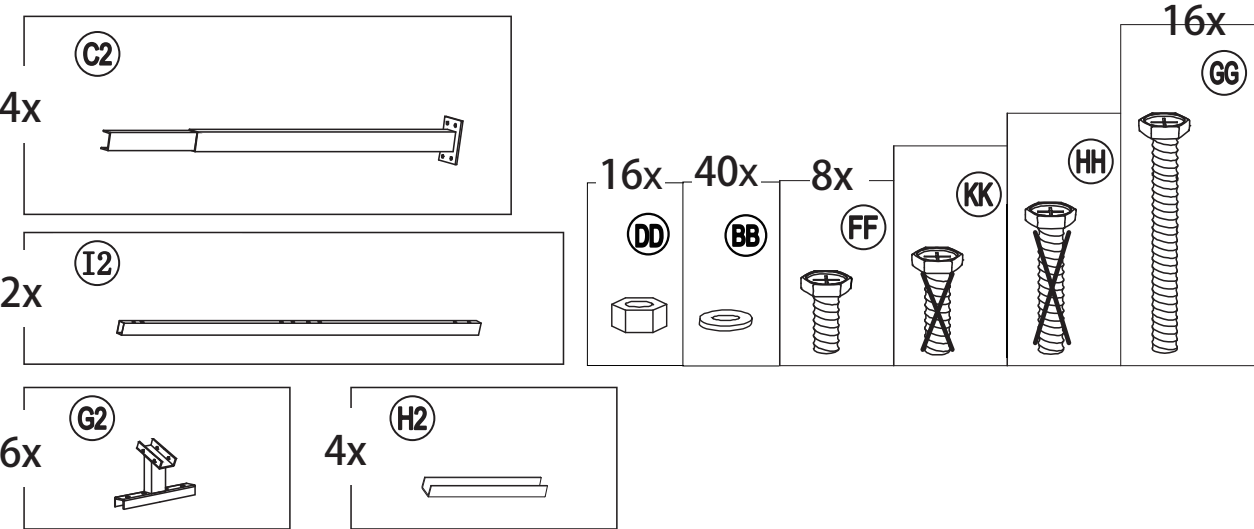
STEP 2



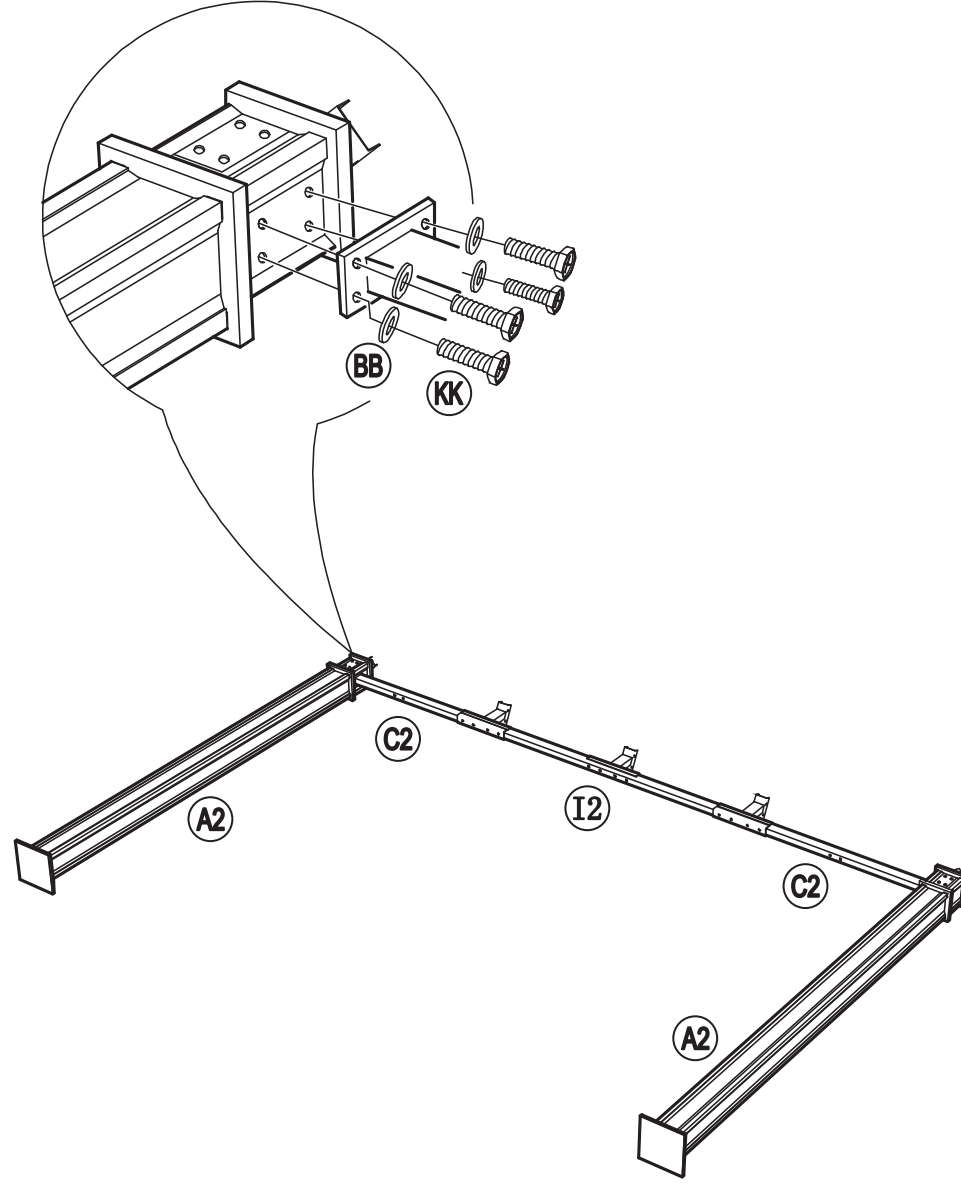
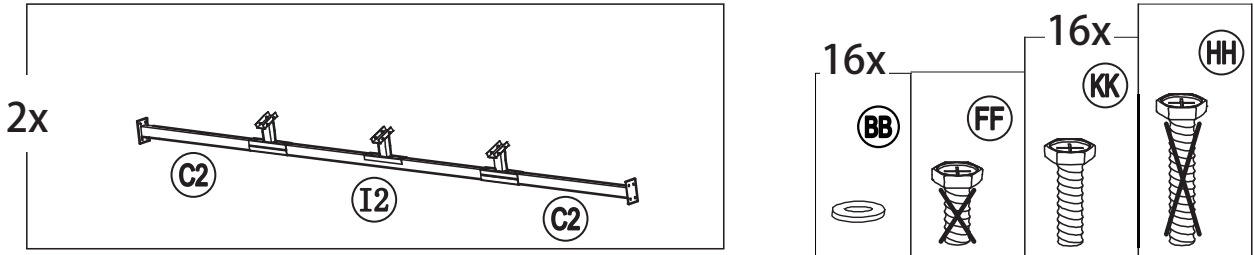
STEP 3



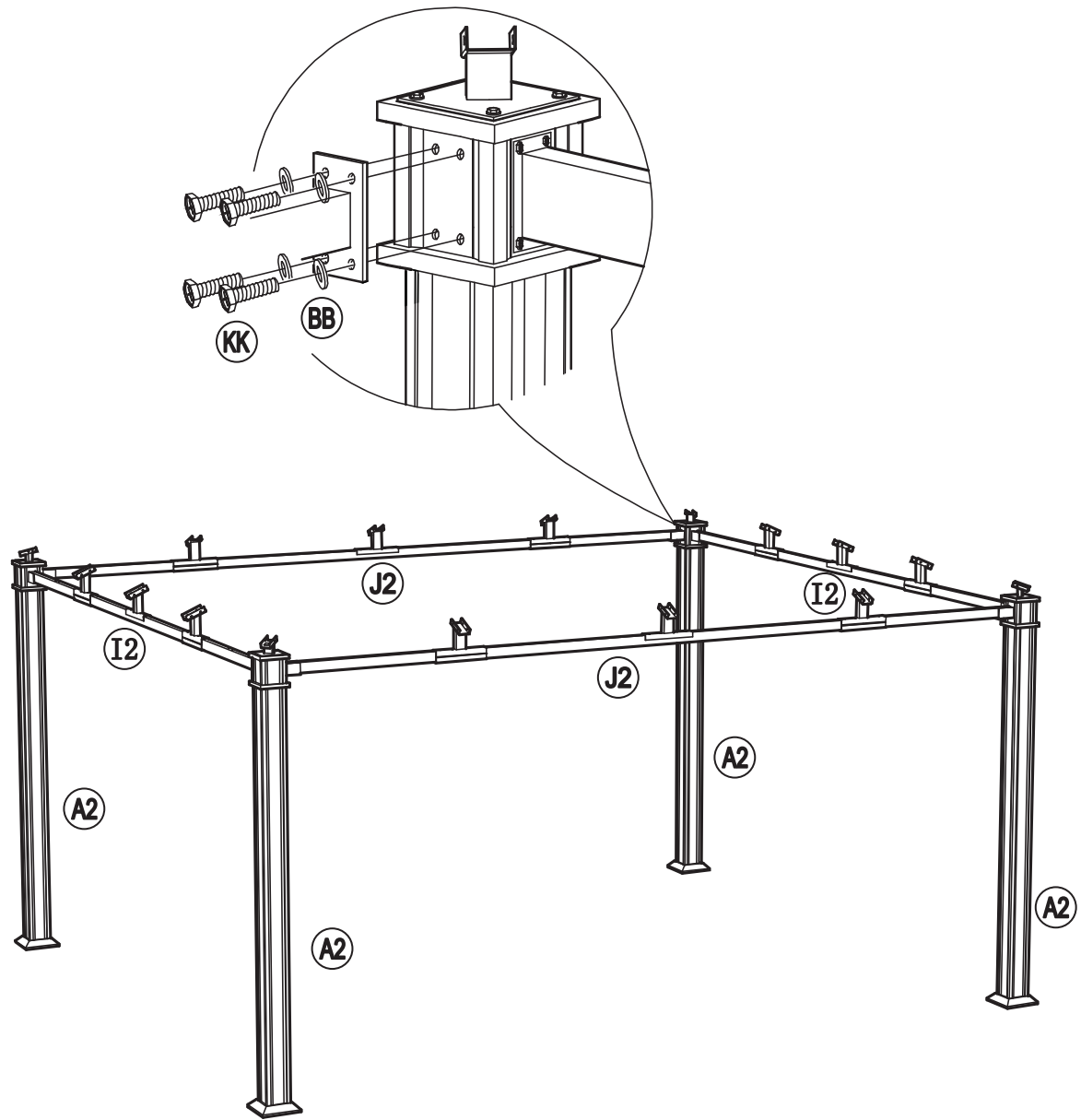
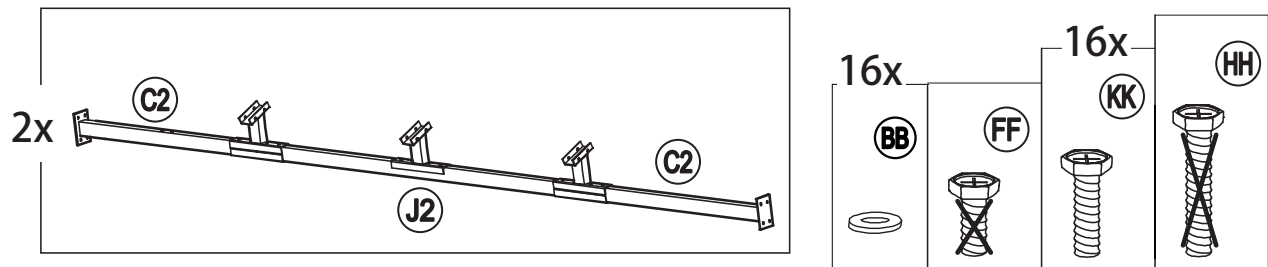
STEP 4



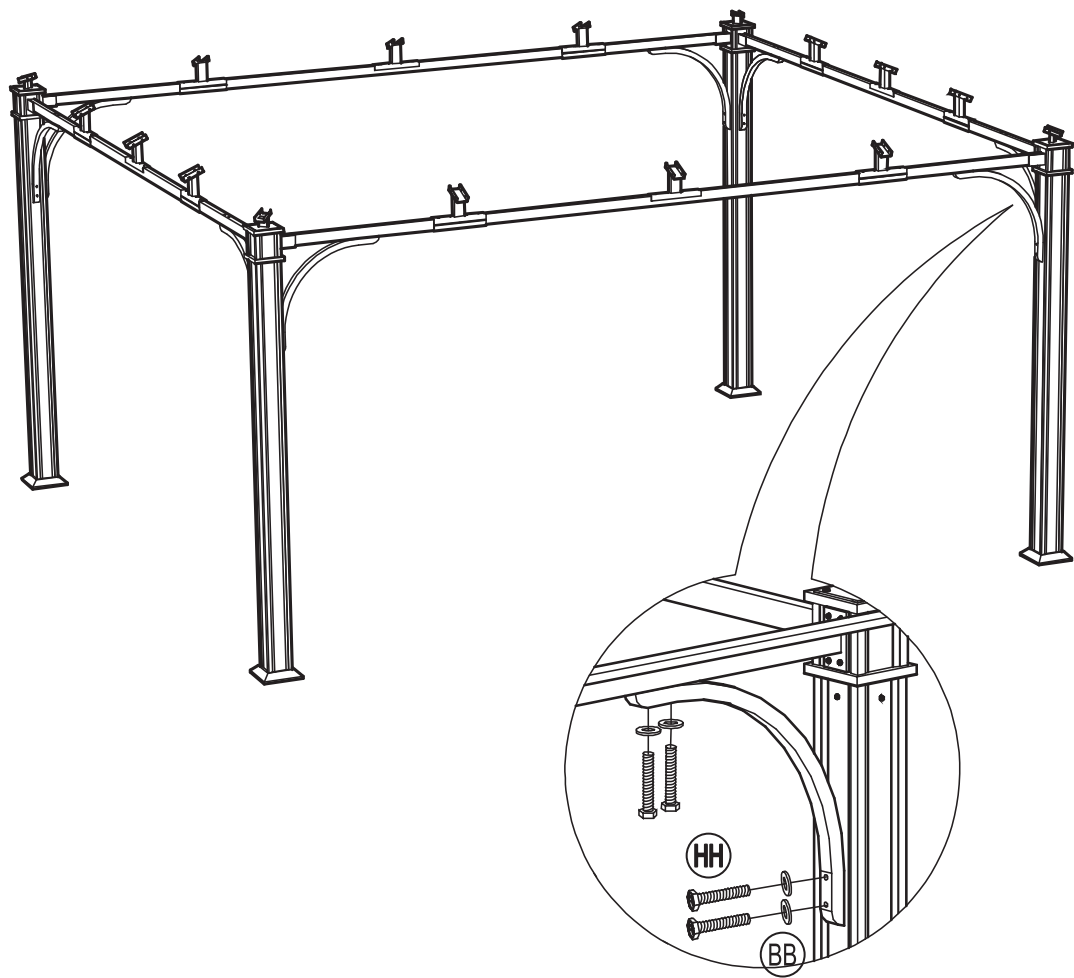
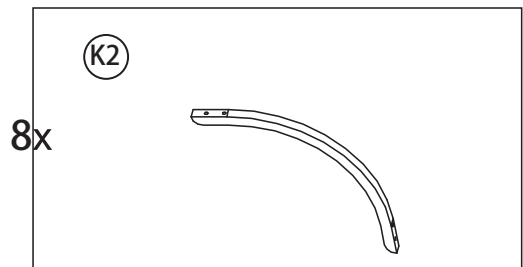
STEP 5



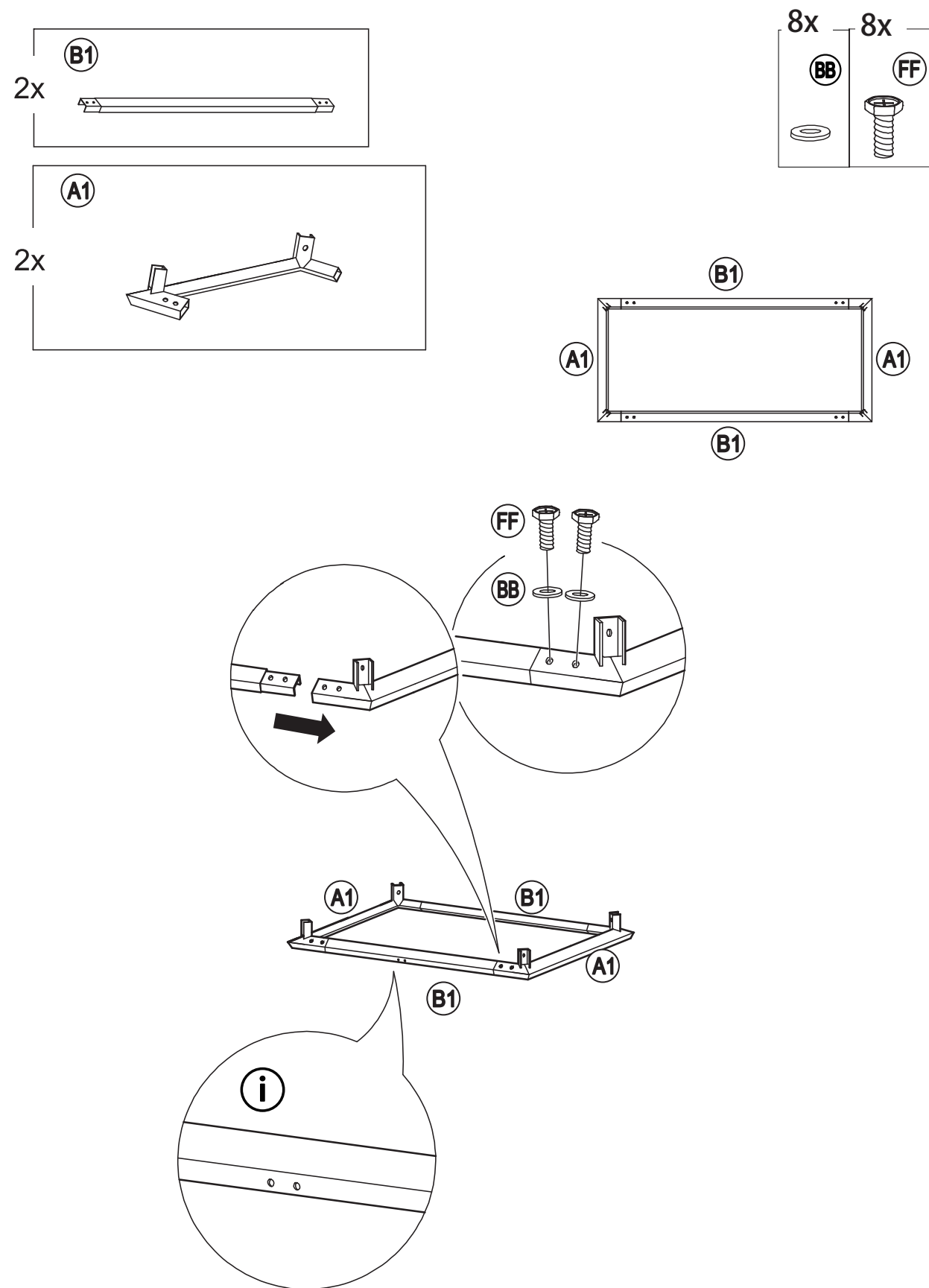
STEP 6



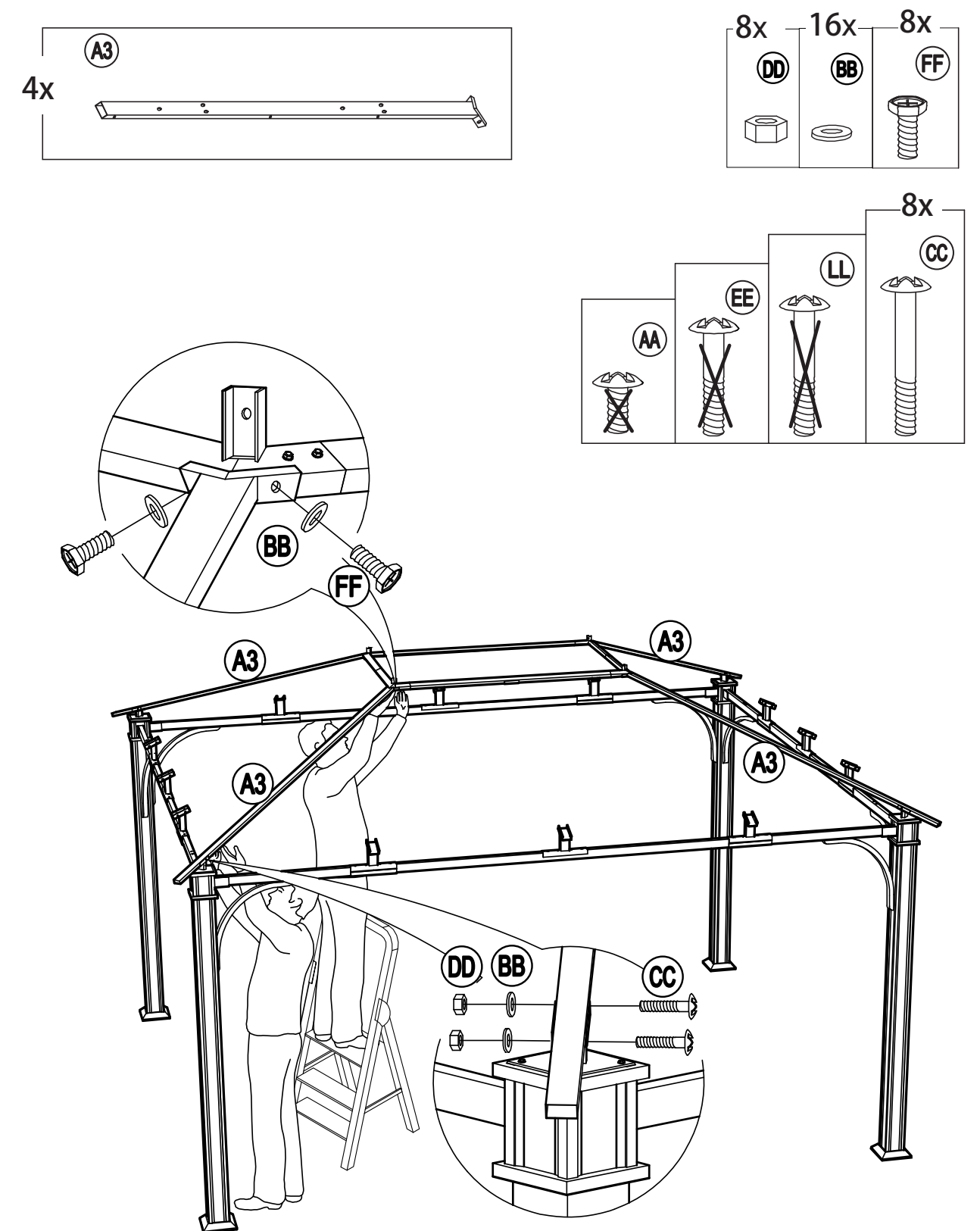
STEP 7



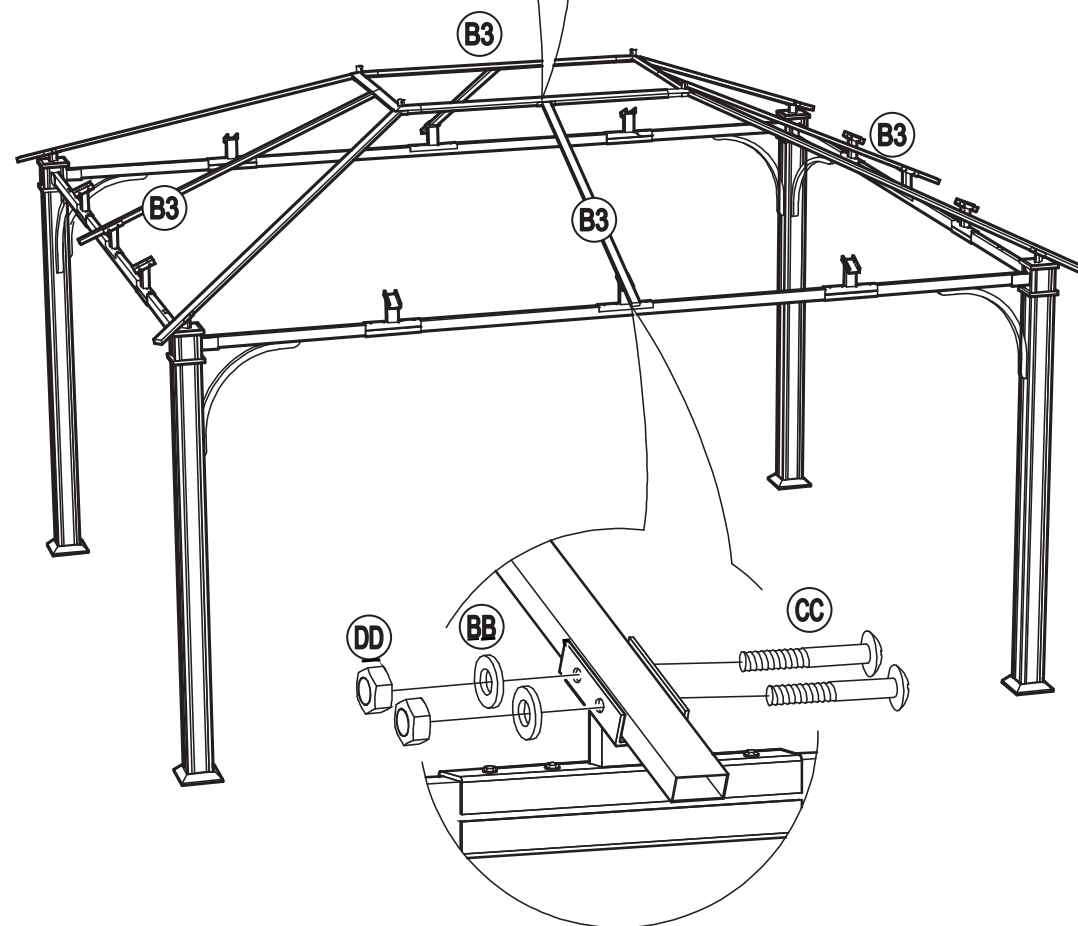
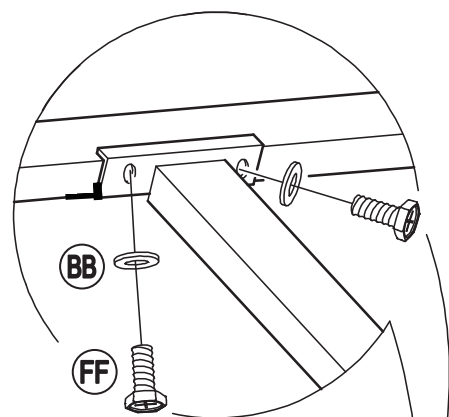
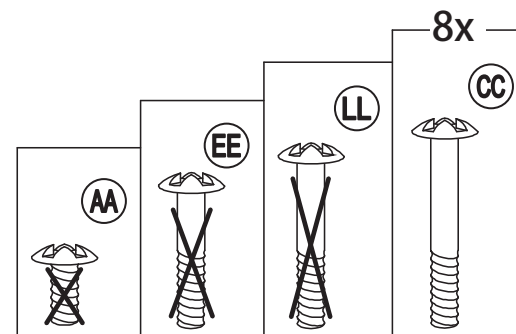
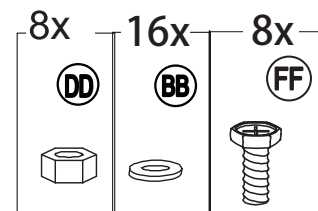
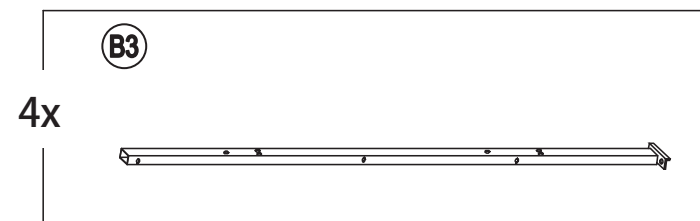
STEP 8



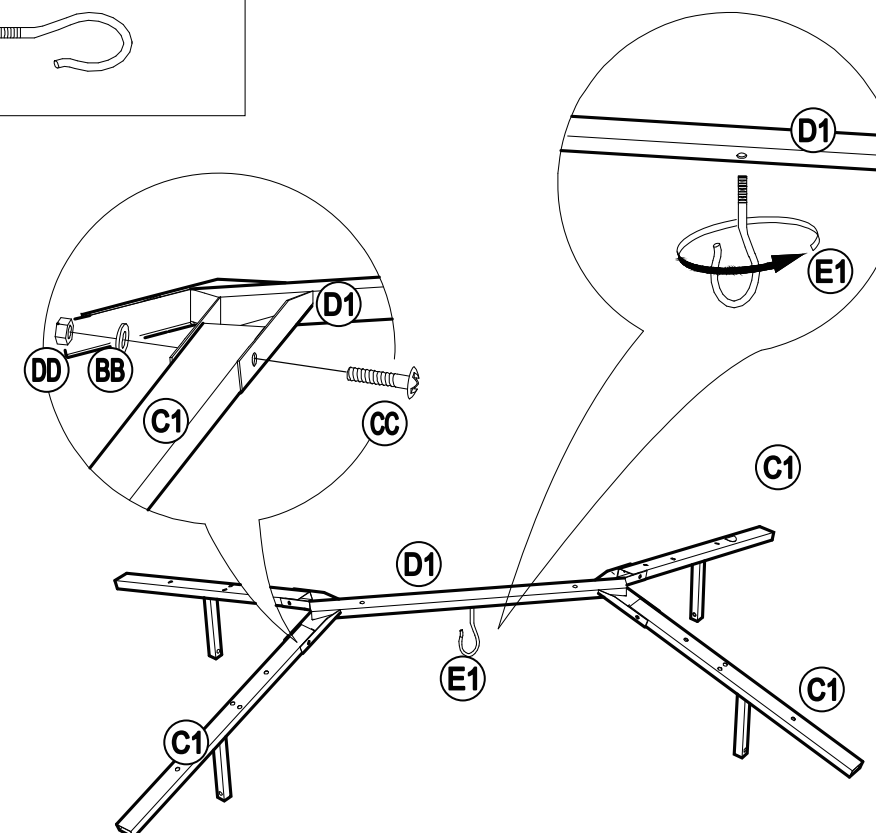
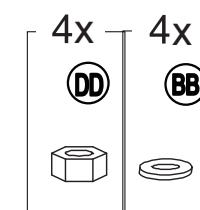
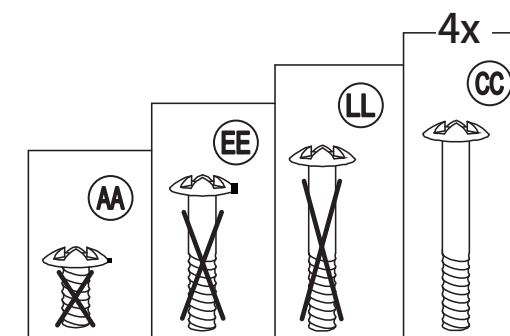
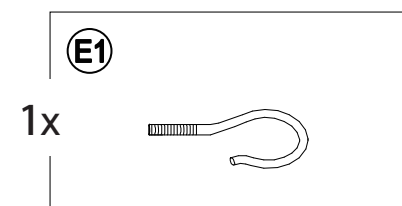
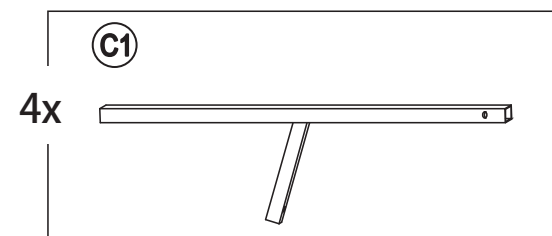
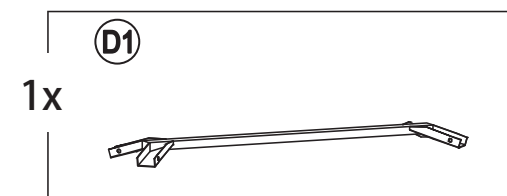
STEP 9



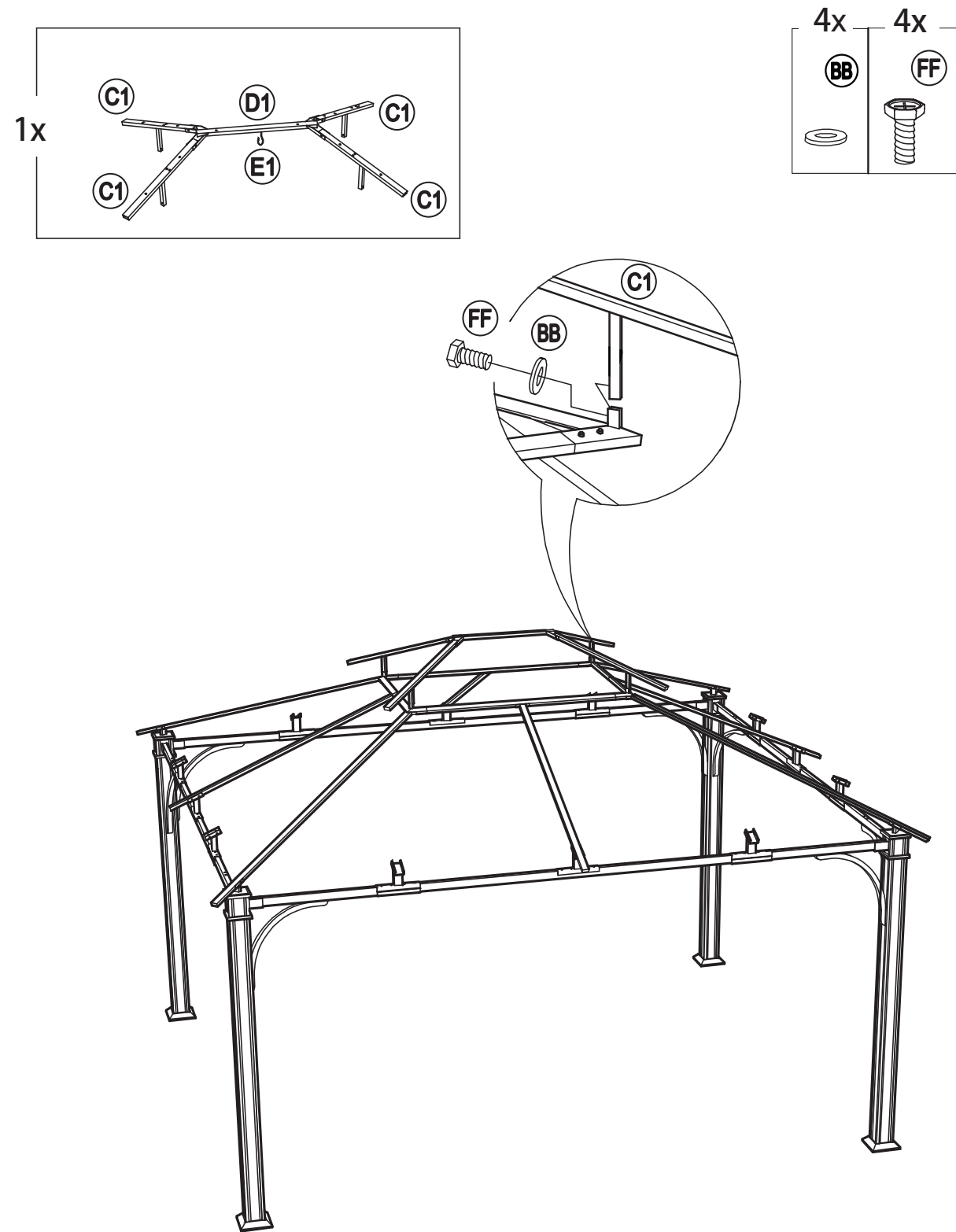
STEP 10



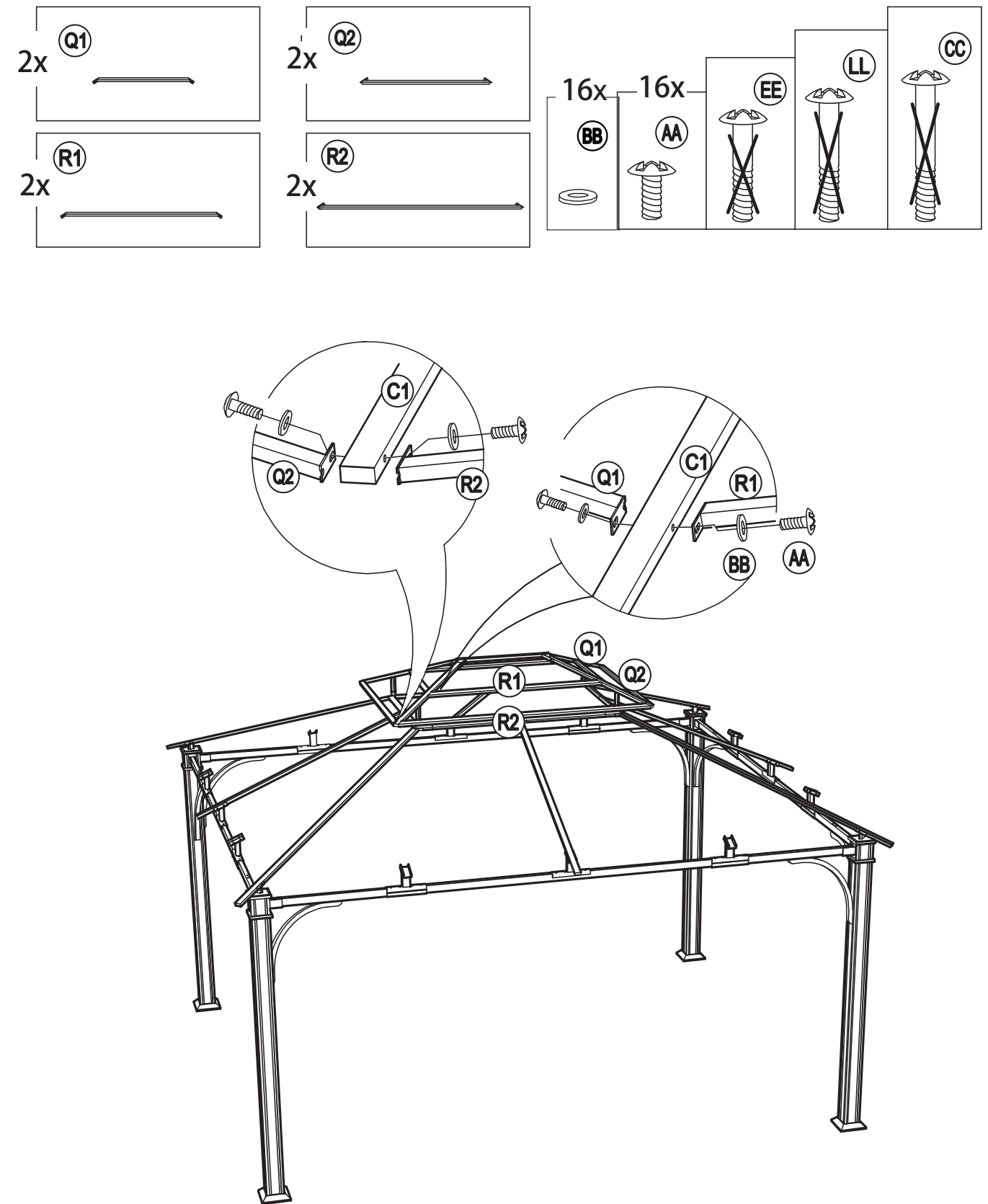
STEP 11



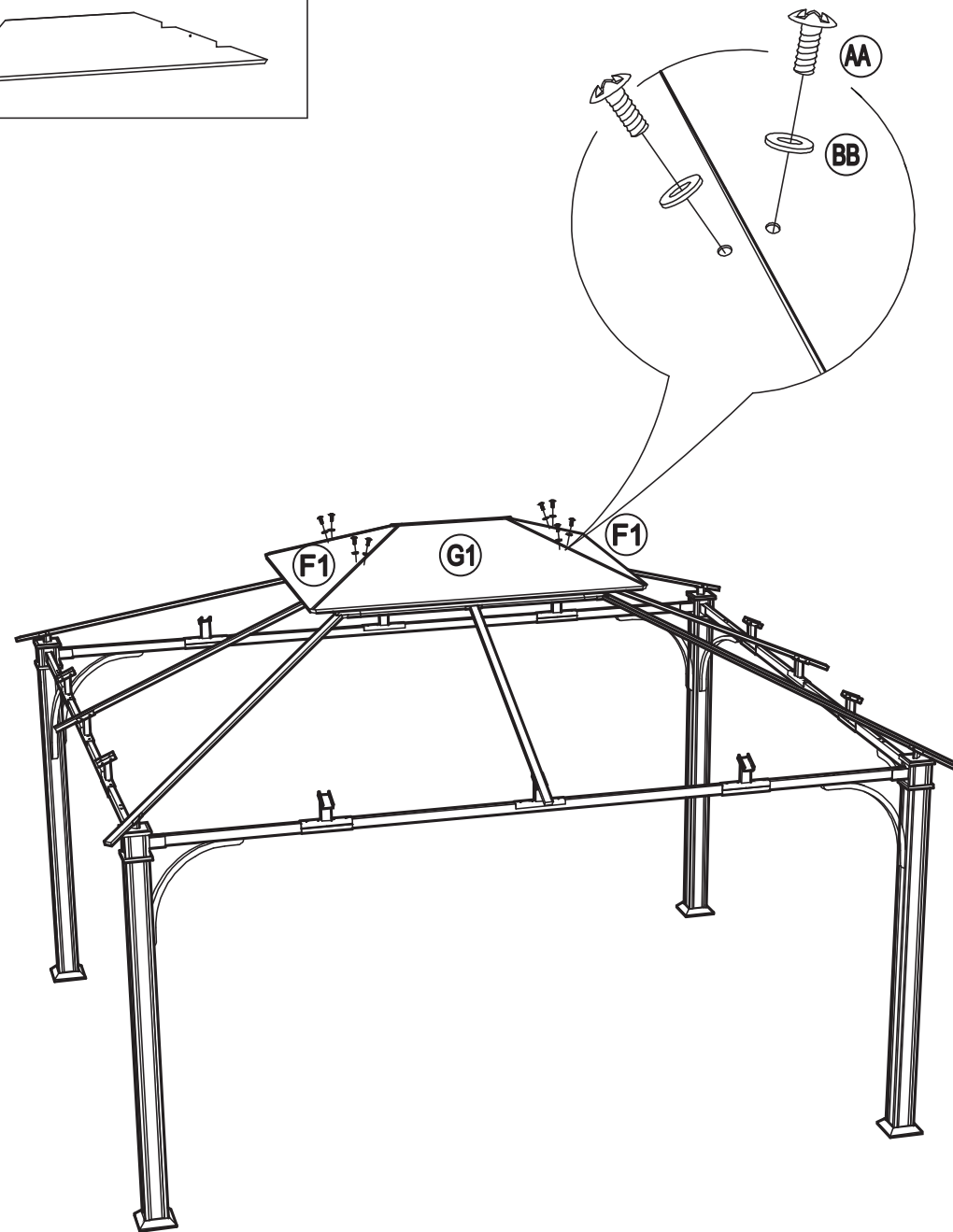
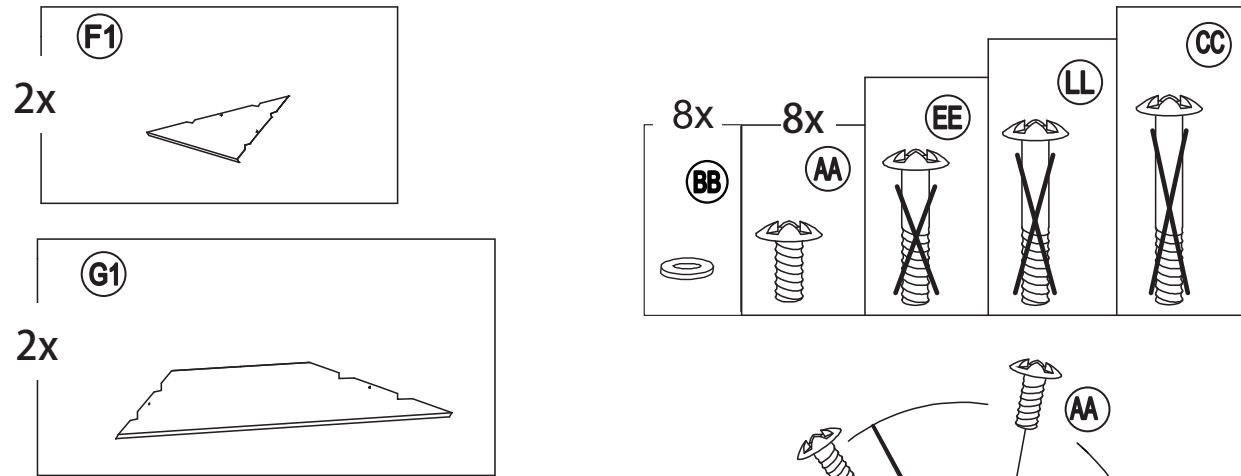
STEP 12



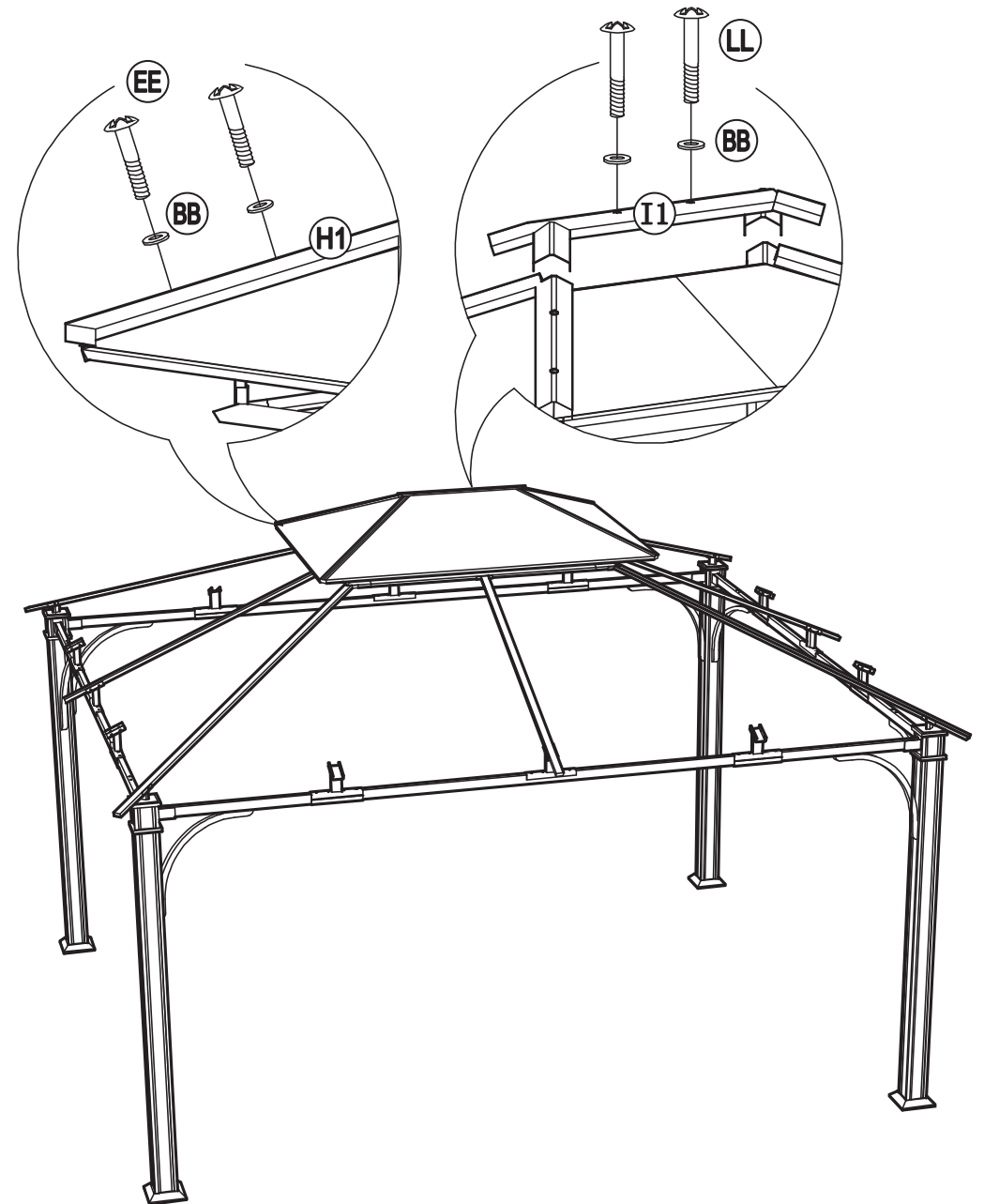
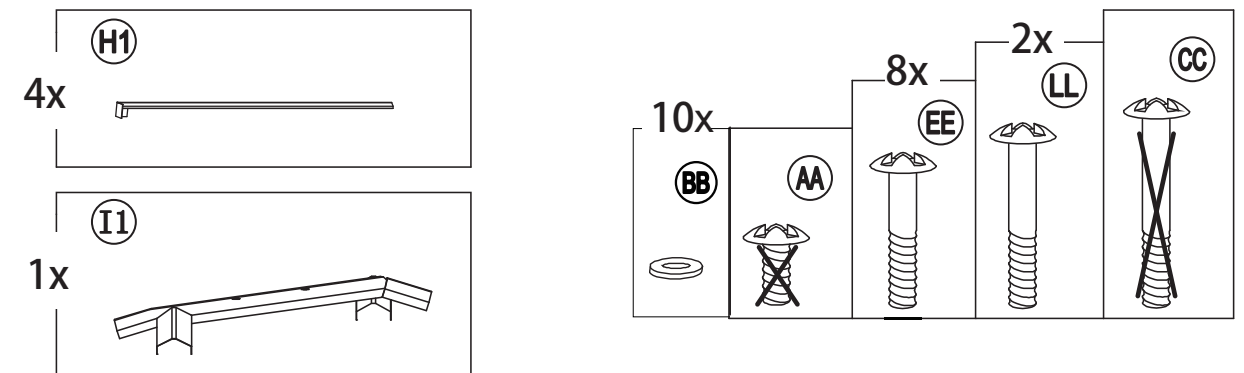
STEP 13



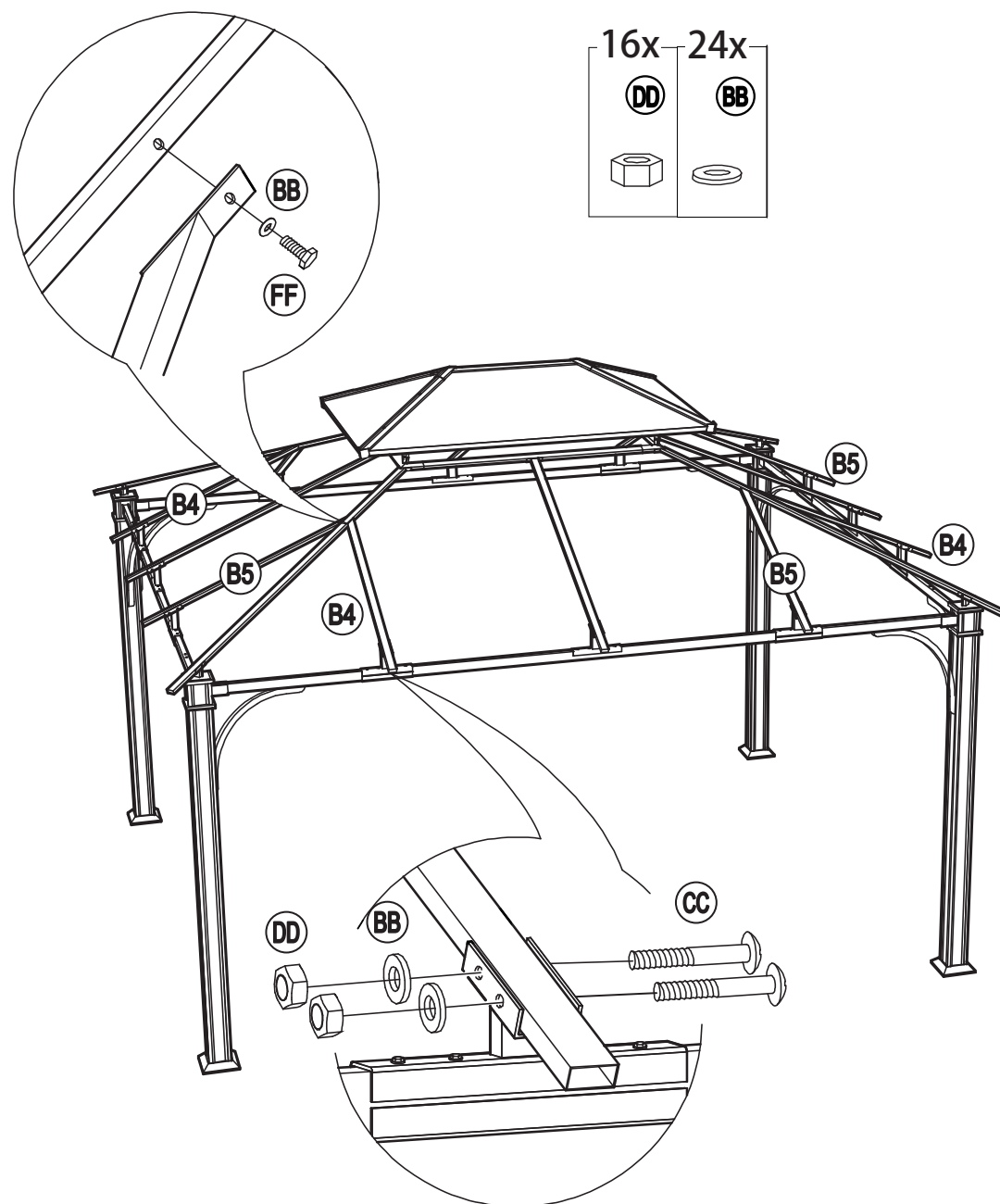
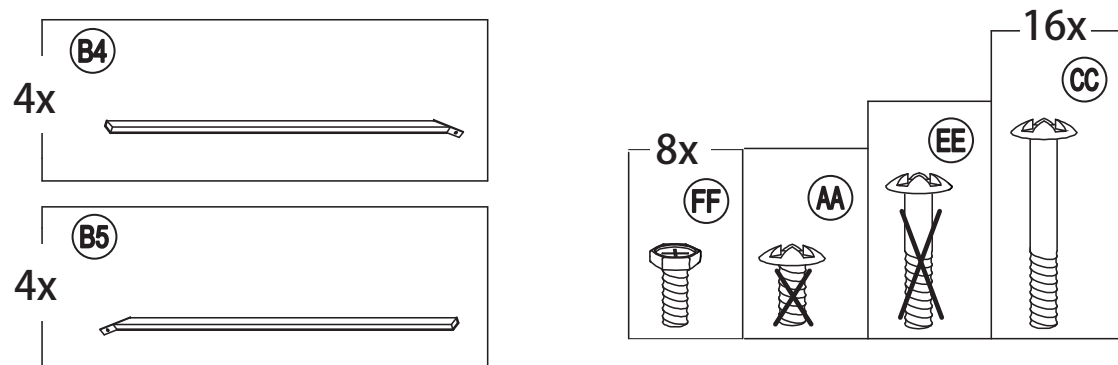
STEP 14



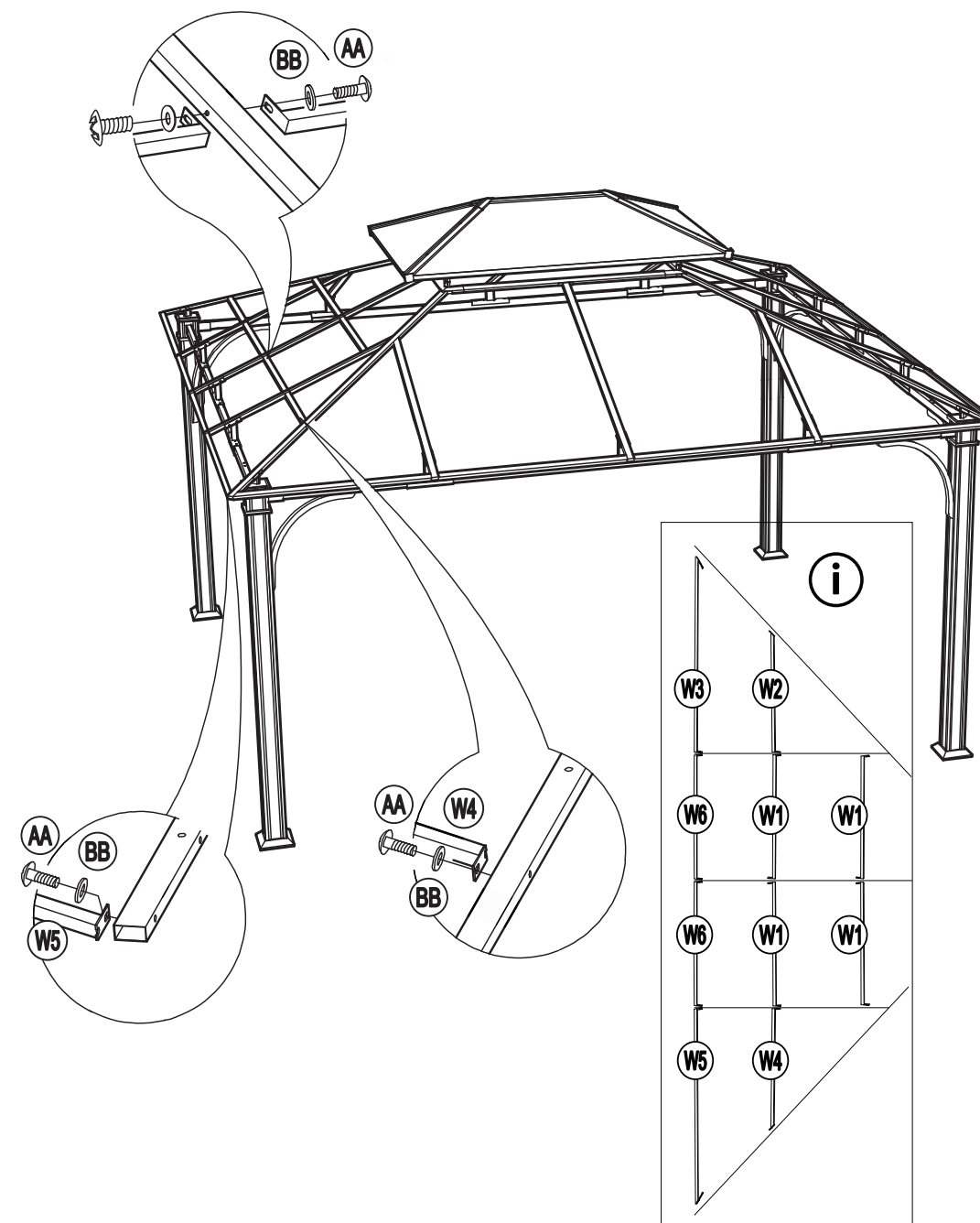
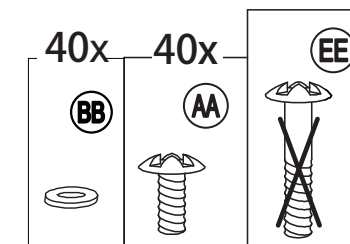
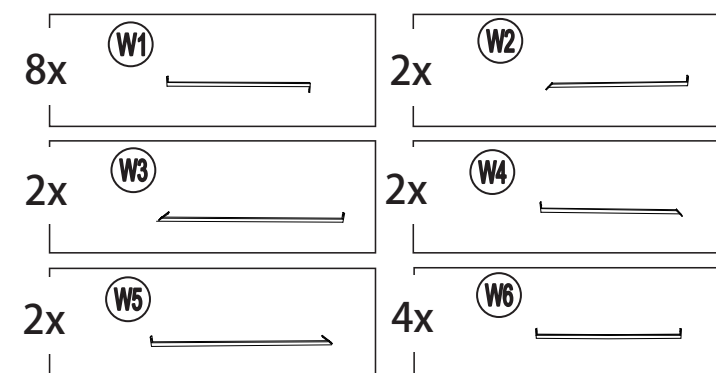
STEP 15

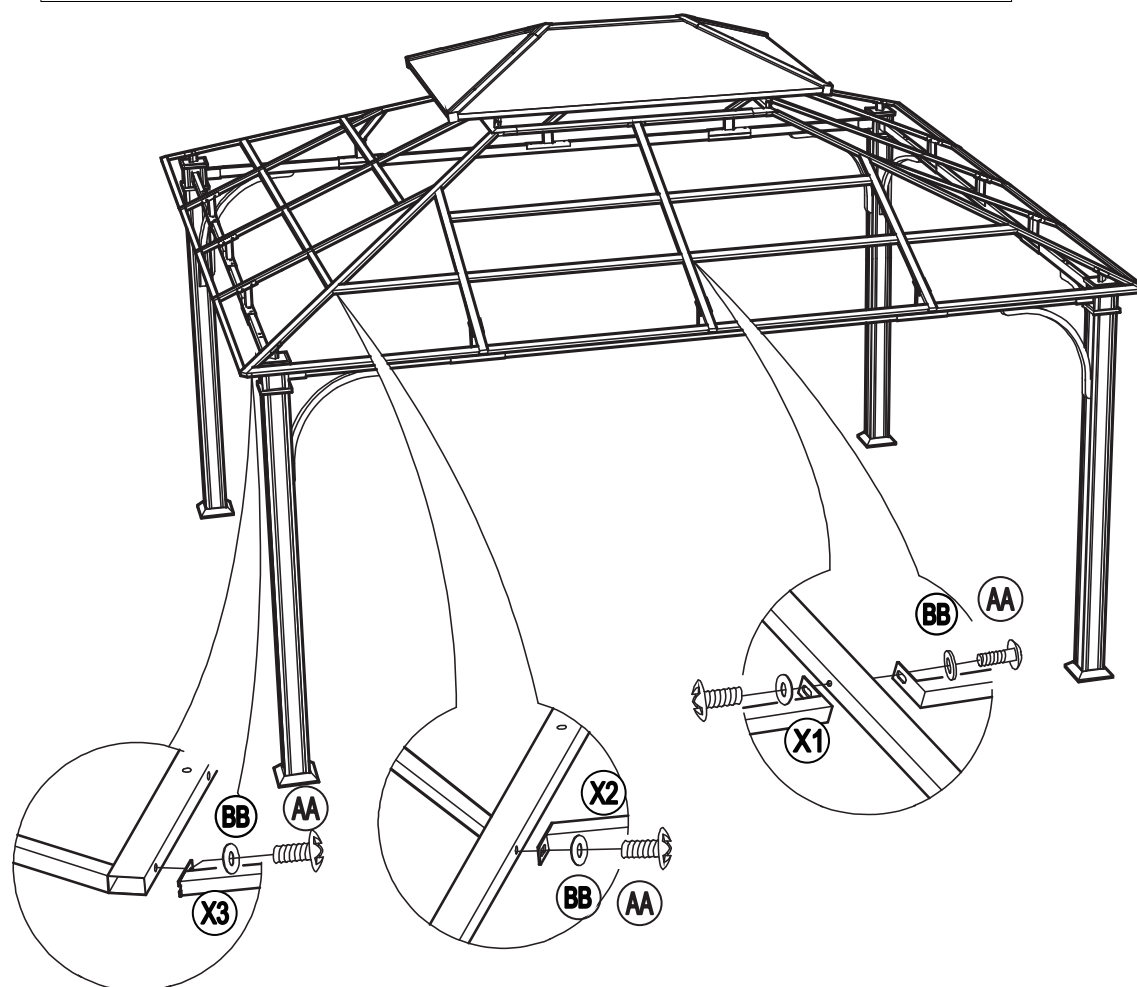
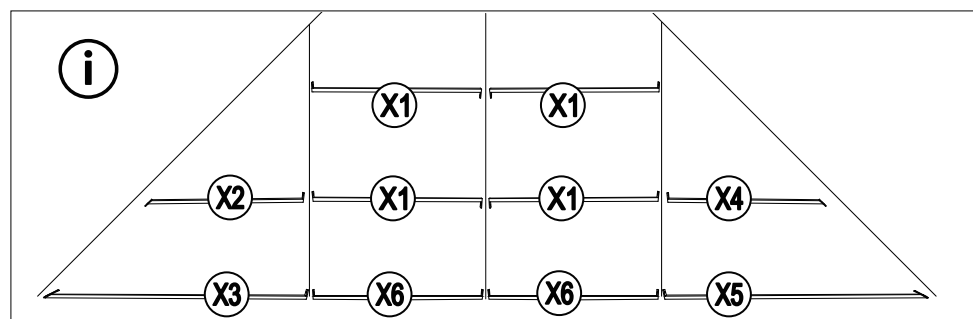
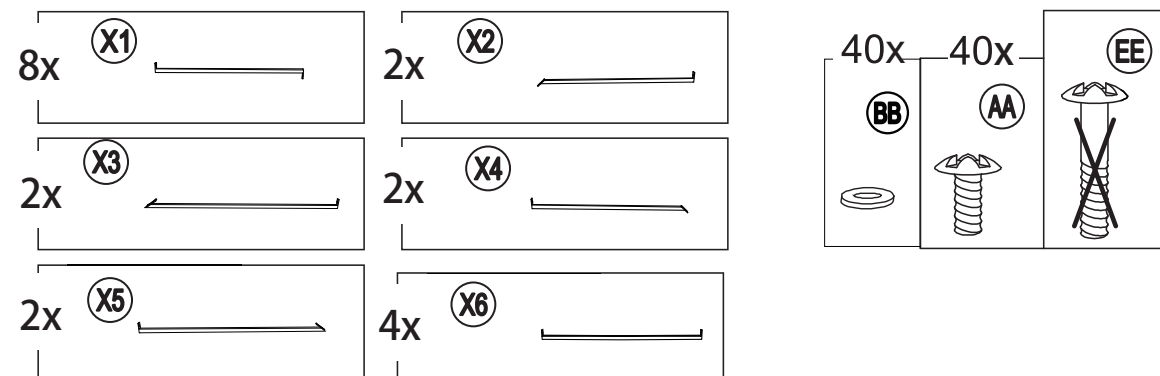
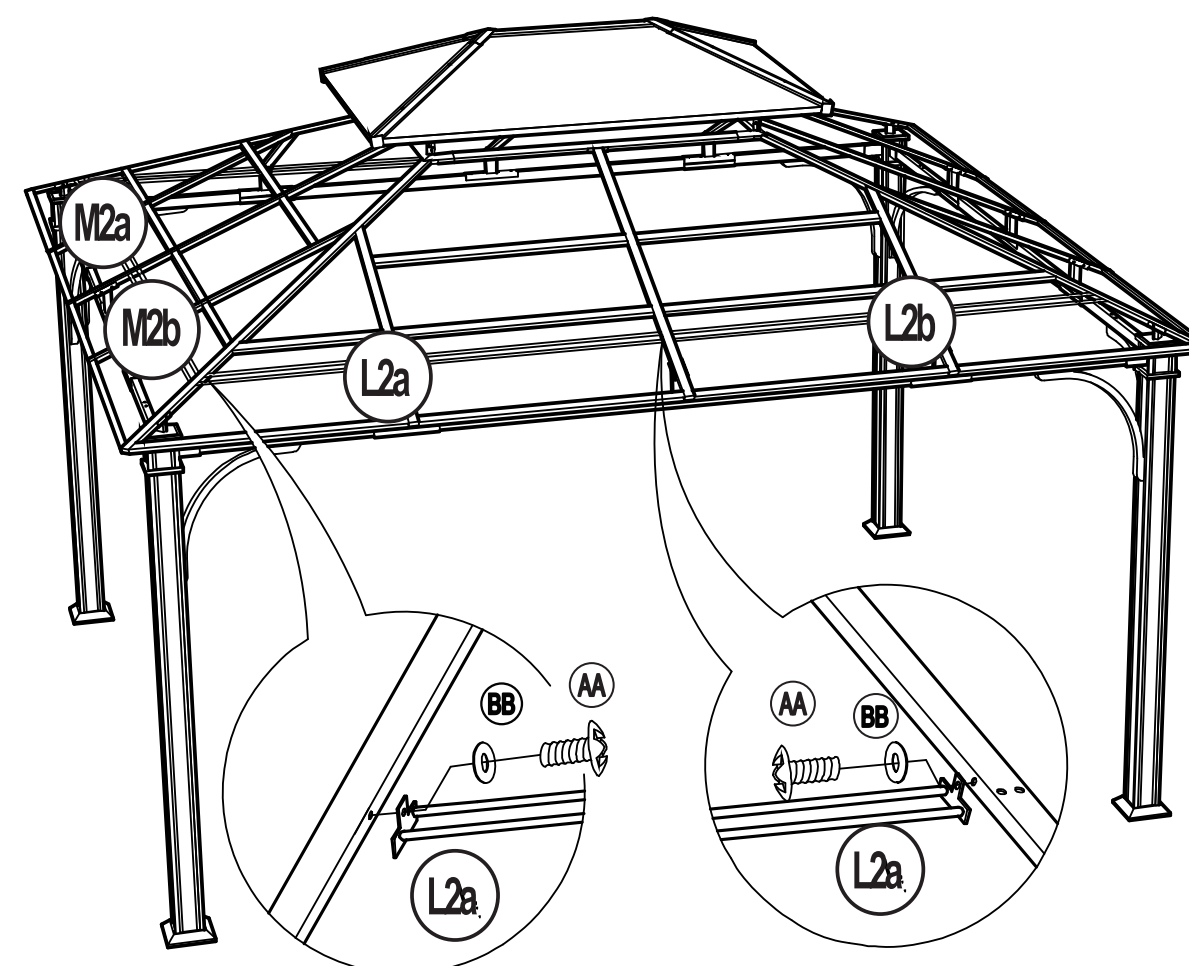
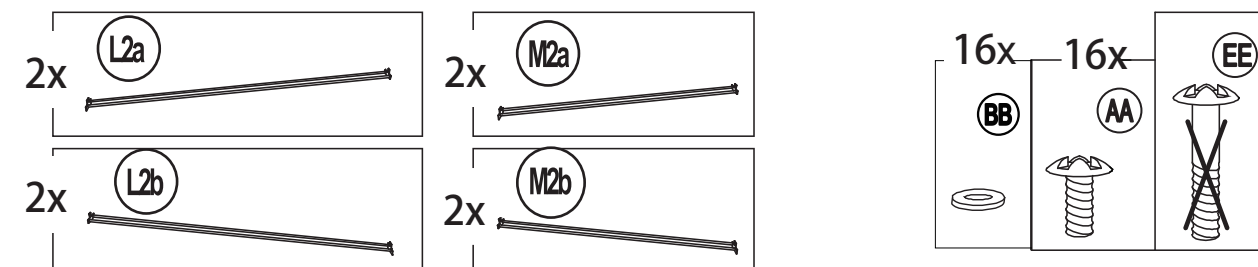


STEP 16

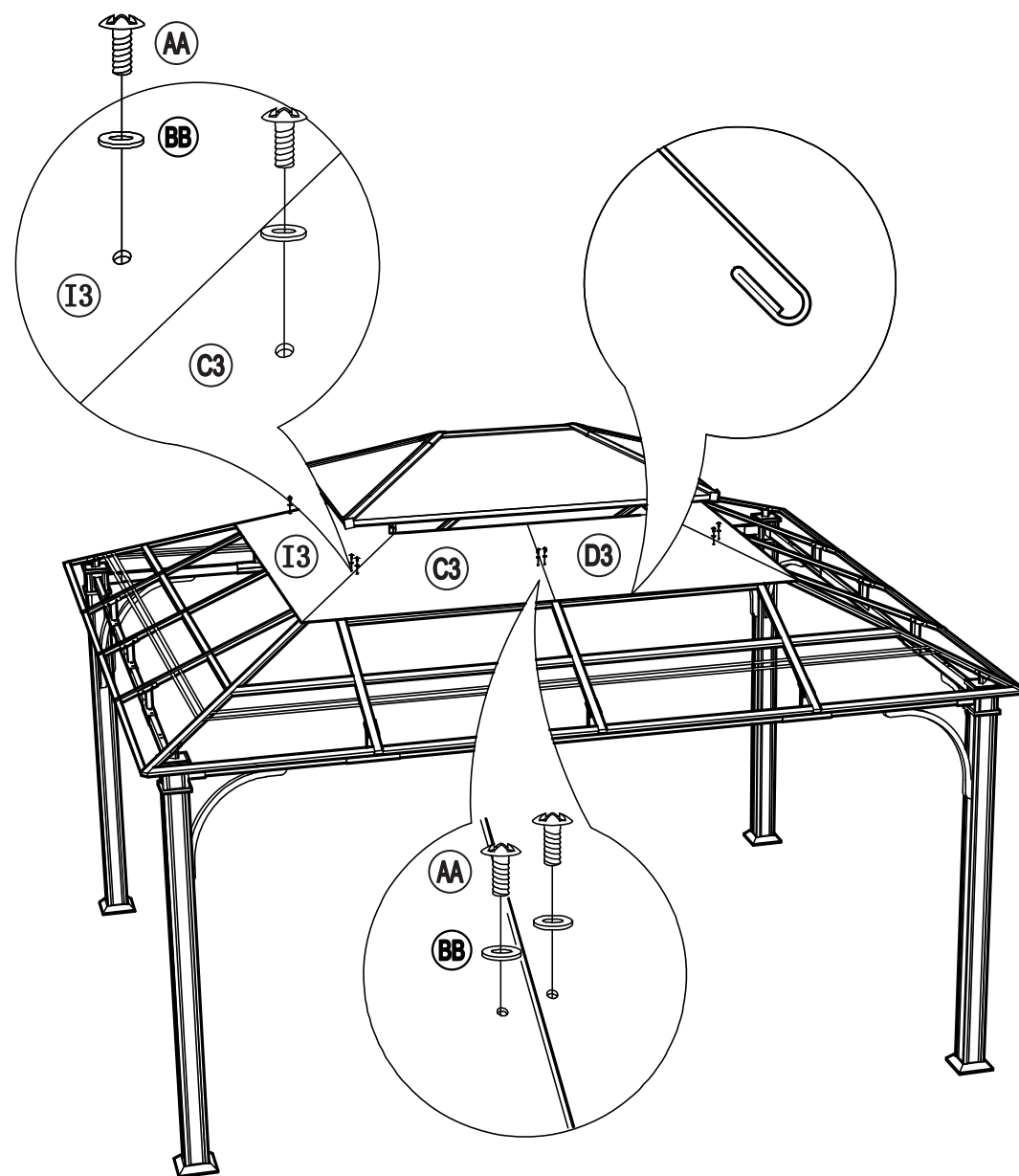
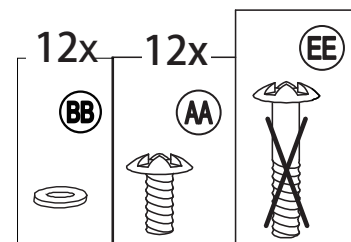
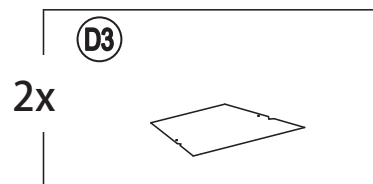
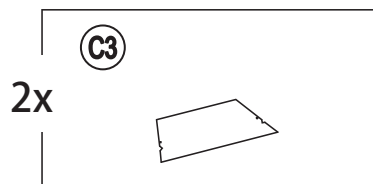
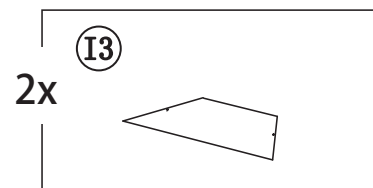


STEP 17

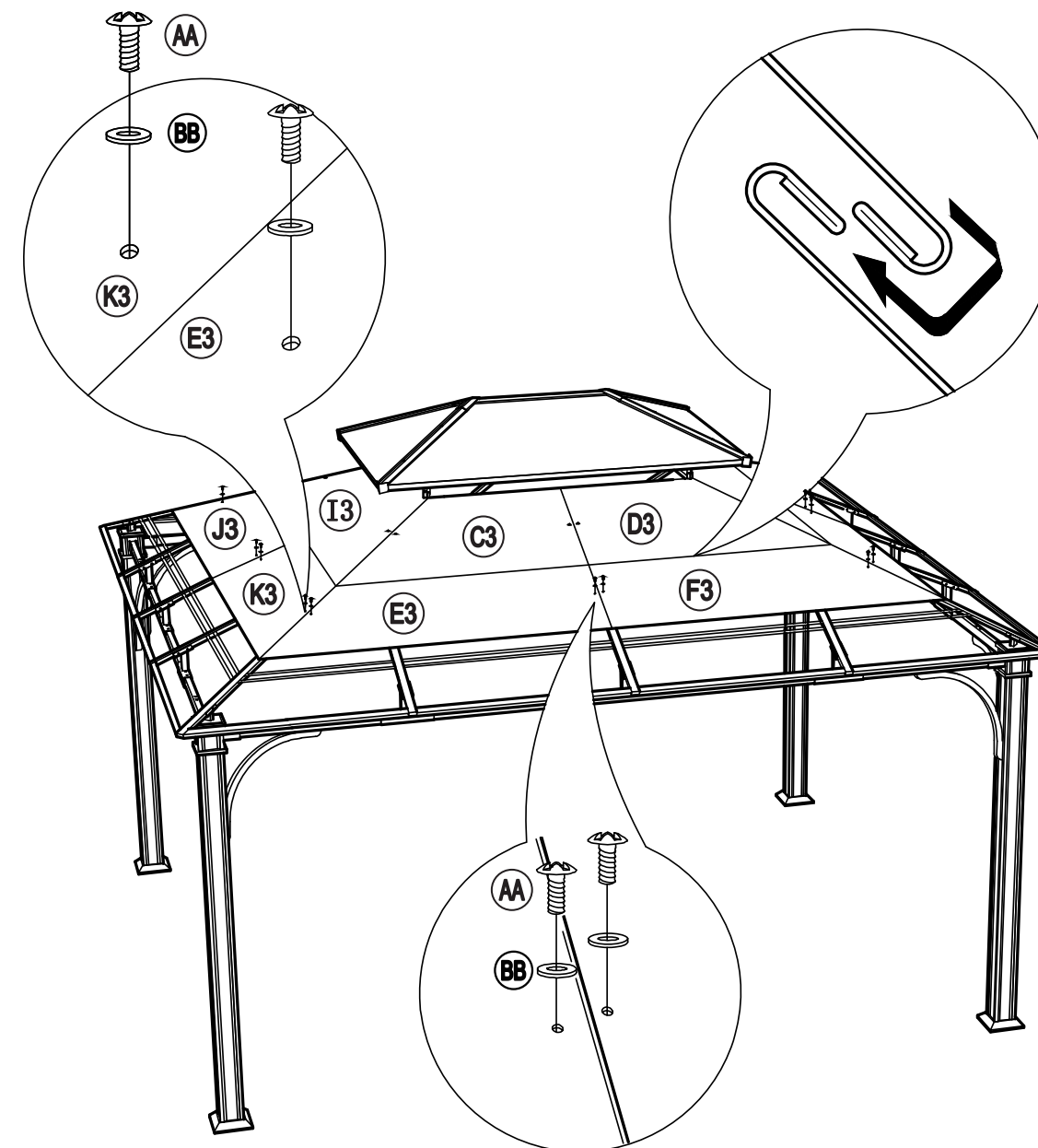
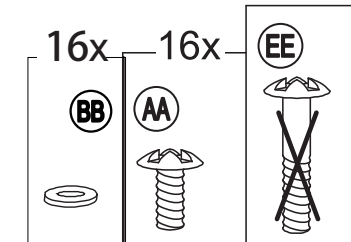
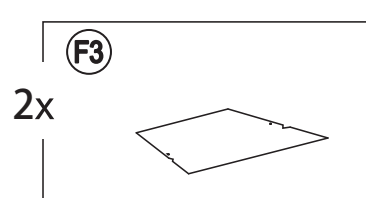
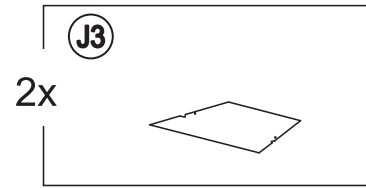
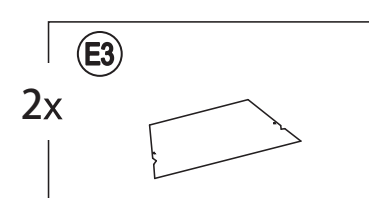
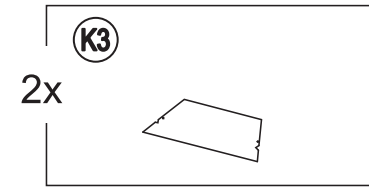


STEP 18**STEP 19**

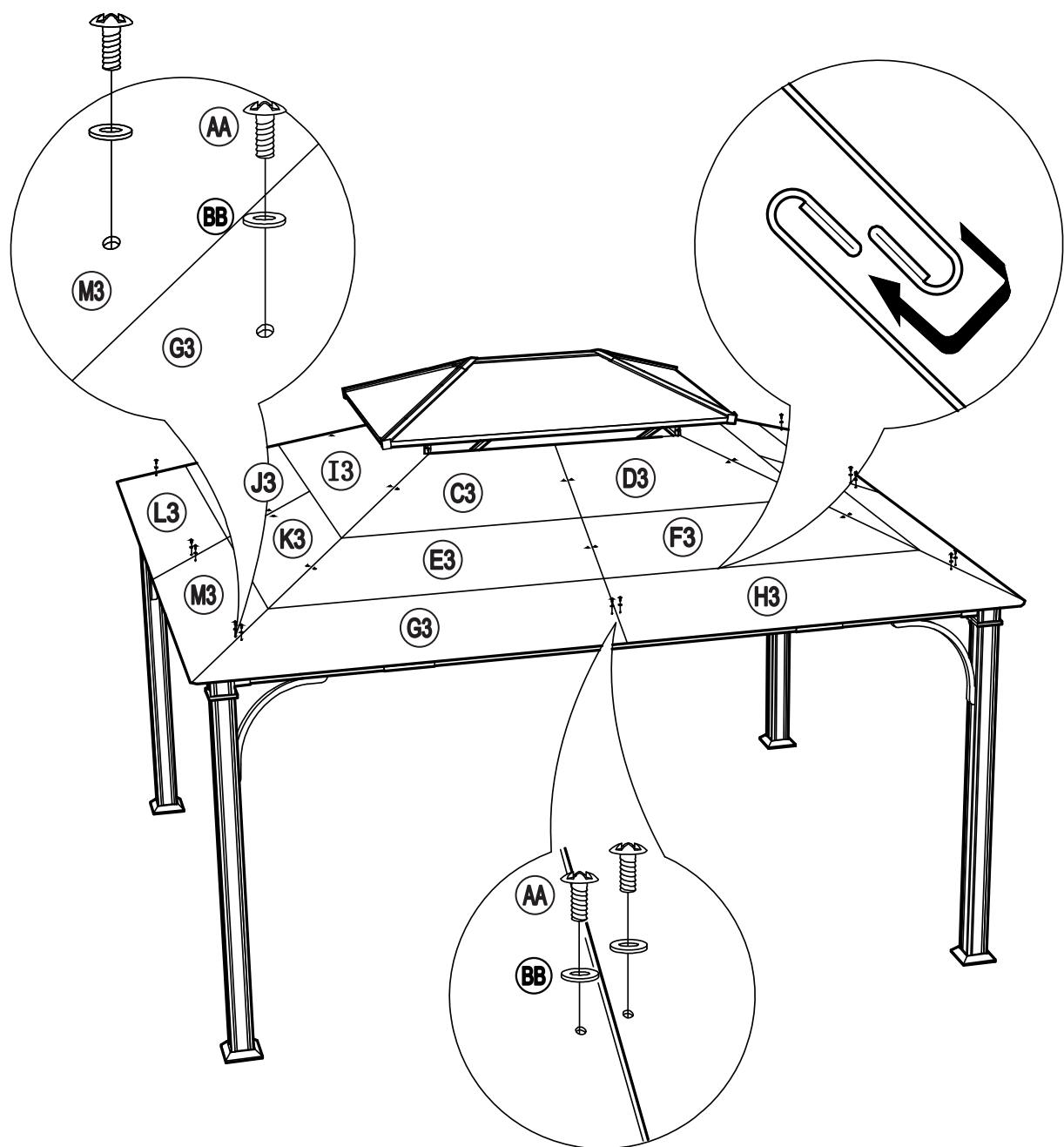
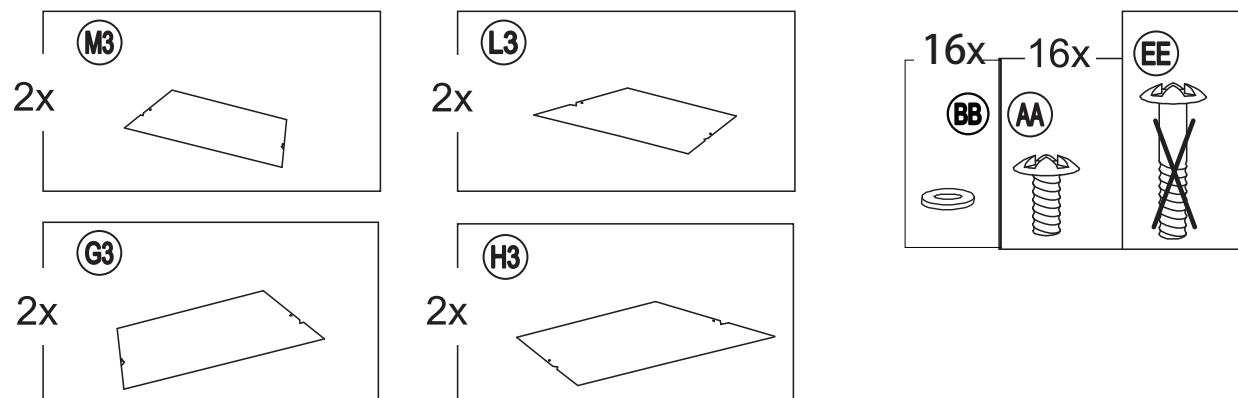
STEP 20



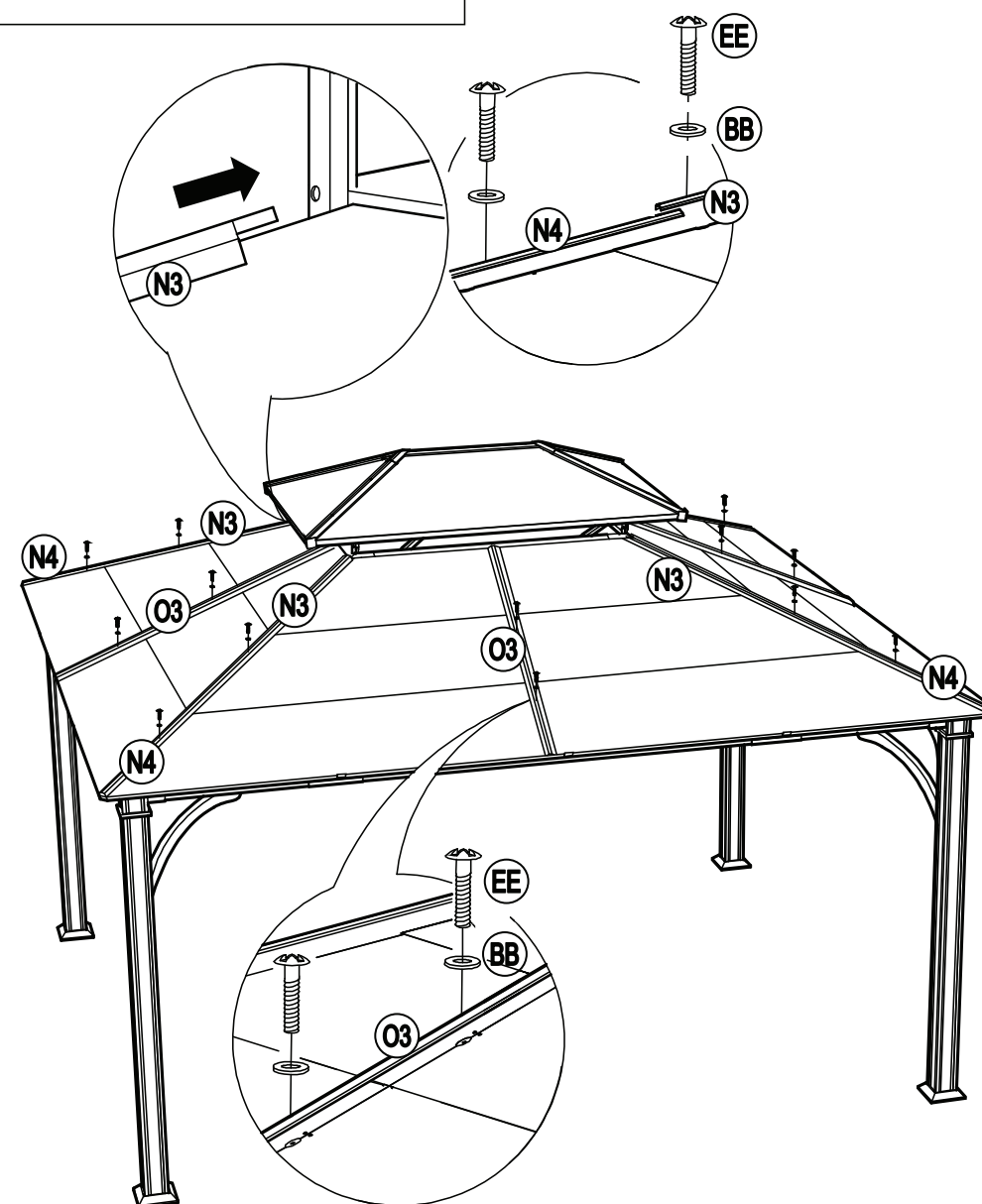
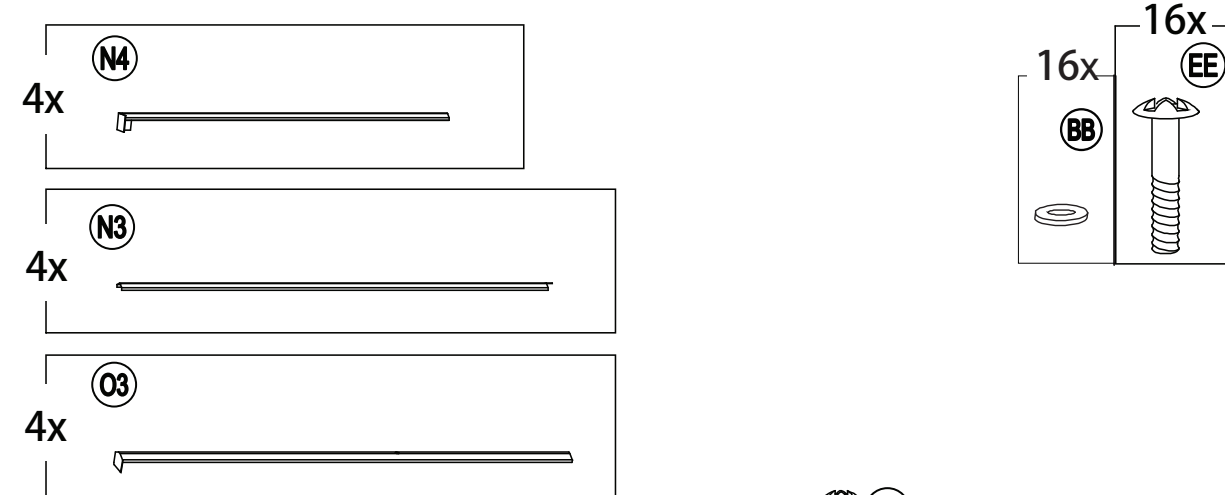
STEP 21



STEP 22



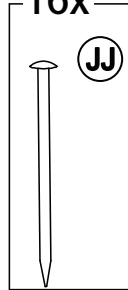
STEP 23



STEP 24

16x

JJ

**CAUTION!**

- Check all screws and nuts periodically for tightness; fasten them as required.
- Disassemble the gazebo in reverse order of the steps used to assemble. Always disassemble the gazebo completely. A partially-disassembled gazebo is not stable enough to resist wind and bad weather, and therefore can be damaged and/or cause damage.

- Do not use bleach, acid, or other abrasive cleaners on the roof panels or beams.
- Steel components of garden accessories and furniture are coated with rust-inhibiting paint. However, due to the nature of steel, surface oxidation (rusting) will occur if this protective coating is scratched. This is a natural process. To minimize this condition, it is recommended that care be taken when assembling and handling the product, in order to prevent the paint from being scratched. Surface rust can be removed easily by applying a little common cooking oil. If surface oxidation (rusting) occurs and no measures are taken to correct it, the oxidation may start dripping onto the assembly surface, which may cause rough stains that could be difficult to remove.

Dimensions(LxWxH)

144 x 168 x 121"

366 x 426 x 307 cm

Product weight

450 lbs

204 kg

This For Living™ product carries a three (3) year warranty against defects in workmanship and materials. Trileaf Distribution agrees to replace the defective product free of charge within the stated warranty period, when returned by the original purchaser with proof of purchase. This product is not guaranteed against wear or breakage due to misuse and/or abuse.