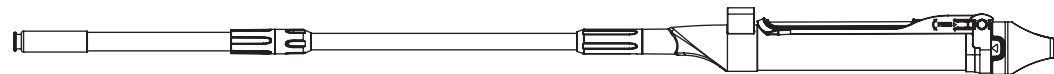
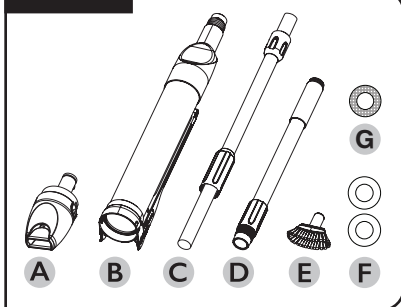


ASPIRATEUR POUR SPA

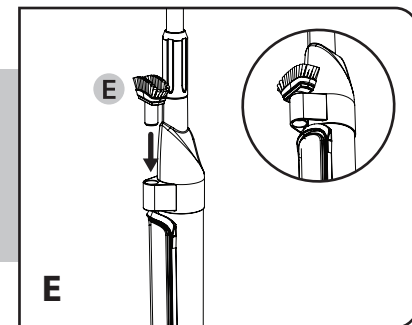
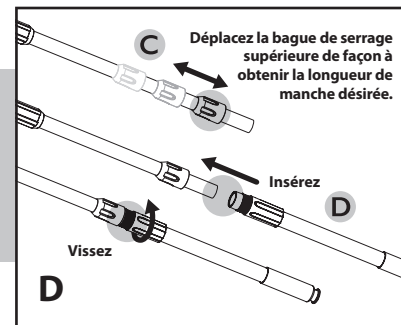
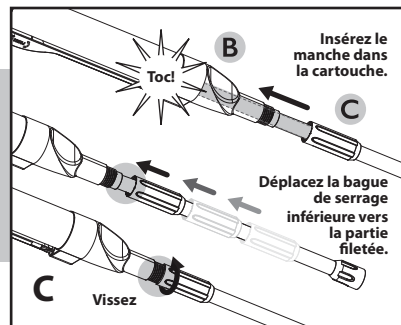
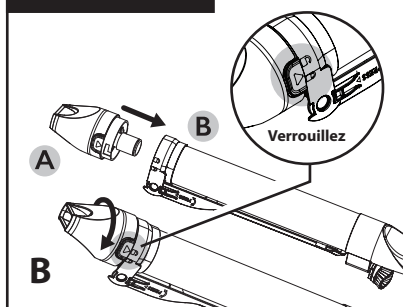
OUTIL DE NETTOYAGE TOUT-EN-UN POUR SPA



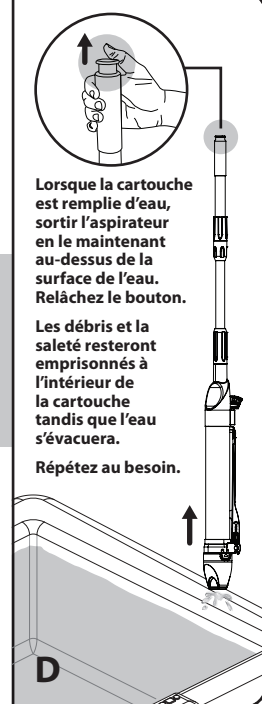
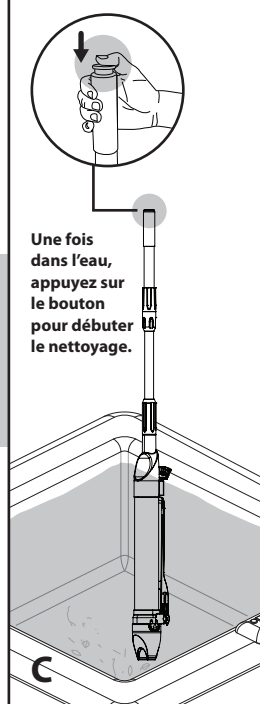
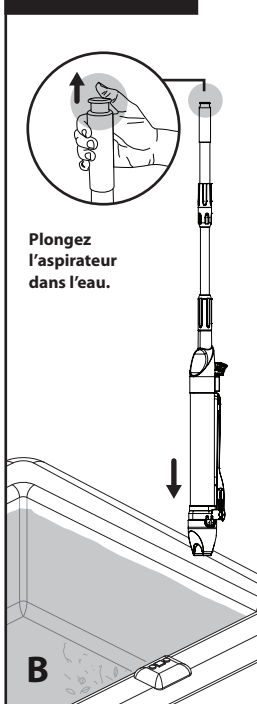
PIÈCES



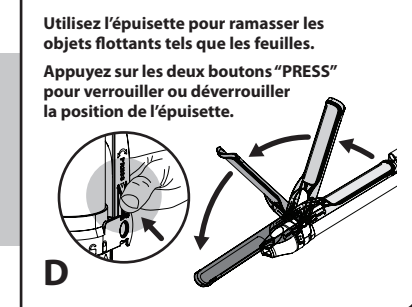
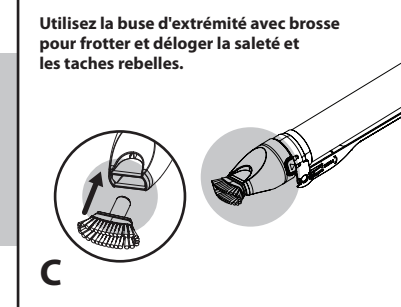
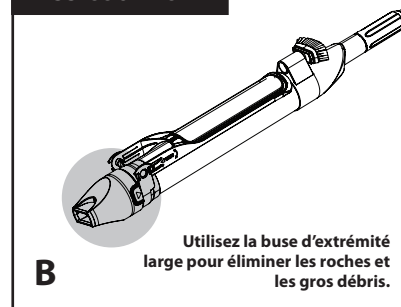
ASSEMBLAGE



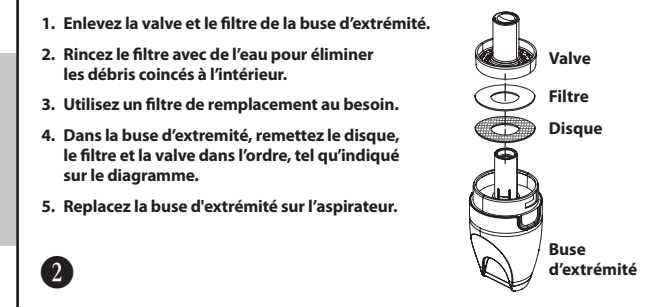
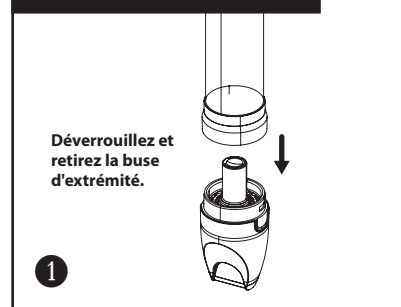
UTILISATION



ACCESSOIRES



NETTOYAGE DU FILTRE



Voyez-le en action!

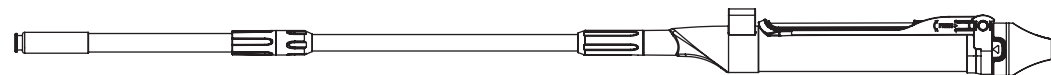
Après l'utilisation, vidangez toujours l'eau de l'aspirateur en prenant soins de retirer la buse. Séchez le tout avant le rangement.

Ne laissez pas l'aspirateur dans le spa, le bain à remous ou la piscine lorsqu'il n'est pas utilisé.

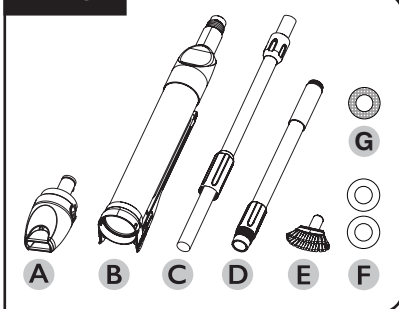
Ne rangez pas à la lumière directe du soleil et/ou dans un endroit où la température baisse en dessous du point de congélation.

SPA VACUUM

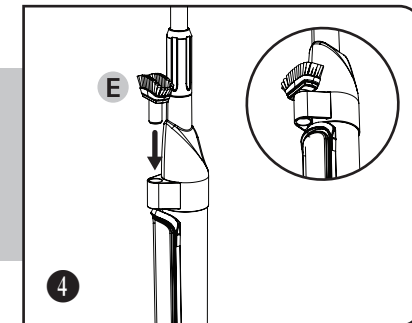
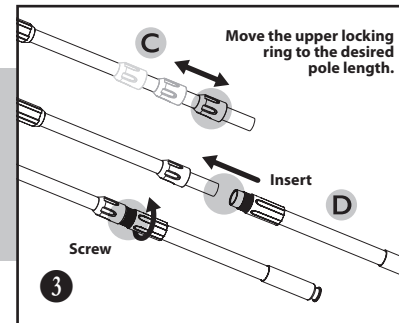
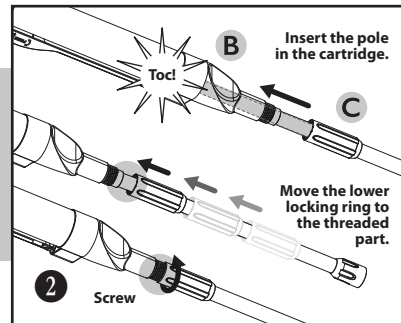
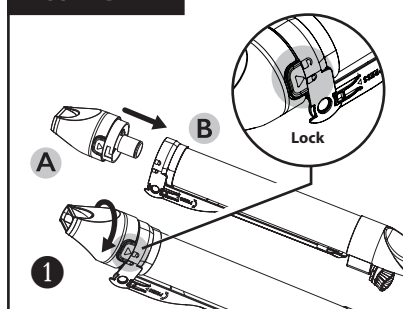
ALL-IN-ONE CLEANING TOOL FOR SPA



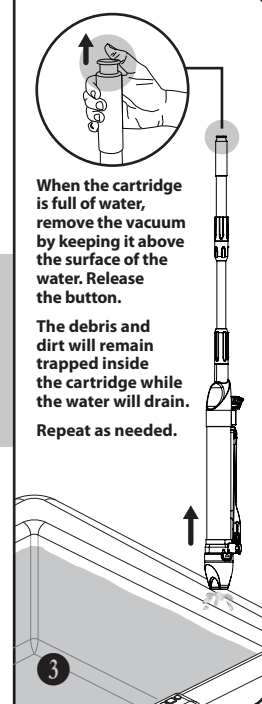
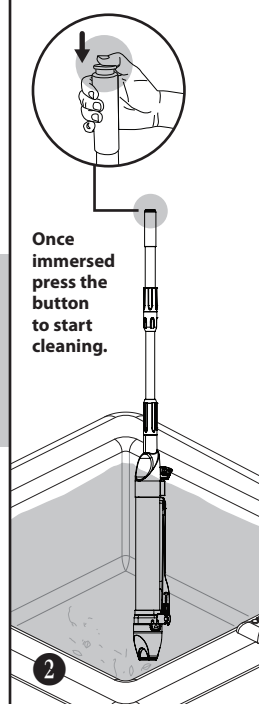
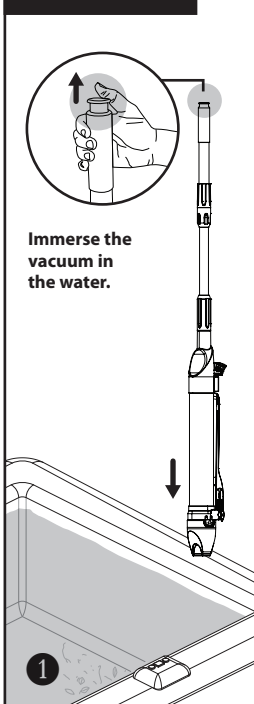
PARTS



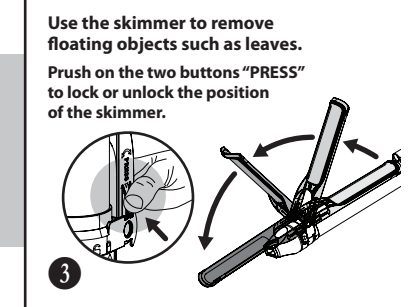
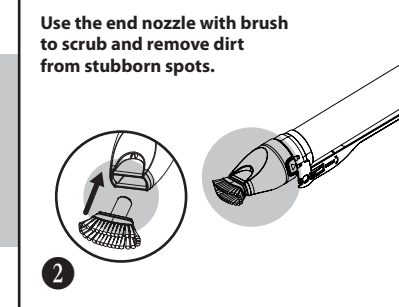
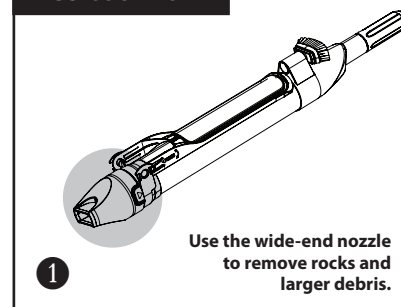
ASSEMBLY



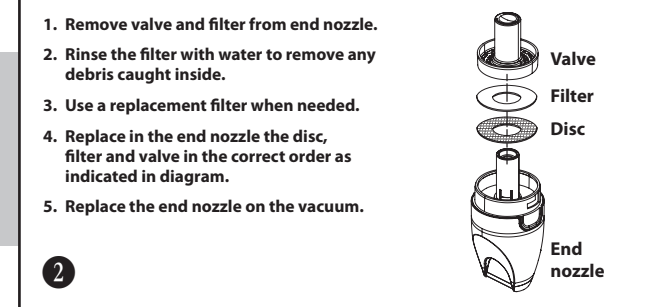
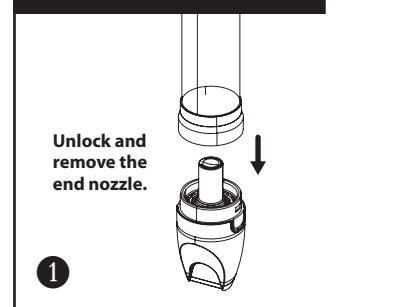
VACUUMING



ACCESSORIES



CLEANING THE FILTER



See it in action!

After use, always drain water from the unit by removing the nozzle and dry it before storing.

Do not leave the unit in the spa, hot tub or pool when not in use. Do not store under direct sunlight.

Do not store outdoors, in a location where the temperature falls below freezing point.