

INSTRUCTION MANUAL

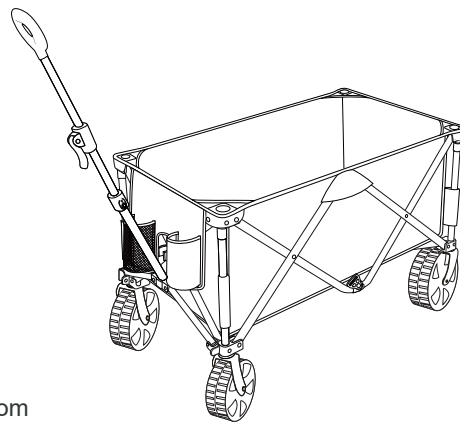
ADVENTURE HAULER Folding Wagon

Product No. 076-2933-8

WOODS CANADA | Vancouver, BC V5Y 1M8 | www.woods.ca | www.woodscanada.com

FOR SERVICE CALL: 1-855-966-3785

IMPORTANT: Read these instructions carefully and familiarize yourself with the product before using. Keep for future reference.

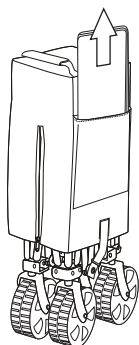


SAFETY

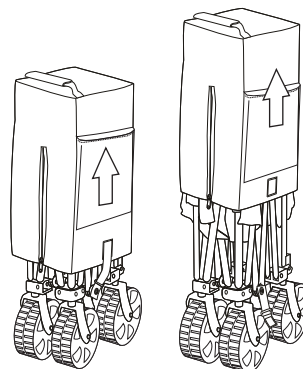
- > **Capacity: 102 kg (225 lb)**

ASSEMBLY INSTRUCTIONS

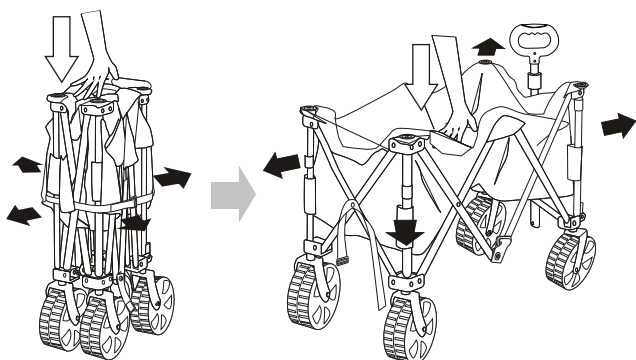
1. Take the base plate out of the side storage pocket.



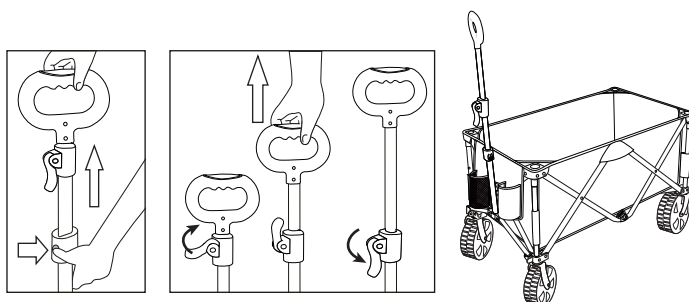
2. Open the bottom self-adhesive closure and side zipper, and take off the carry bag.



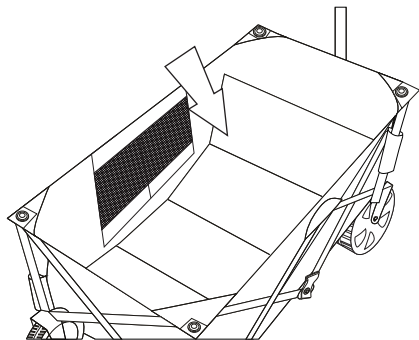
3. Unfasten the strap around the wagon and push the centre of wagon to open it.



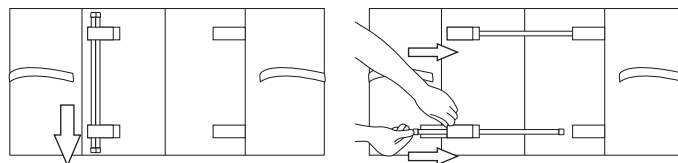
4. Push the button on the shaft of handle to extend to full length. Release the red locking lever, pull the handle outwards to desired length, then push down the red lever until it's locked.



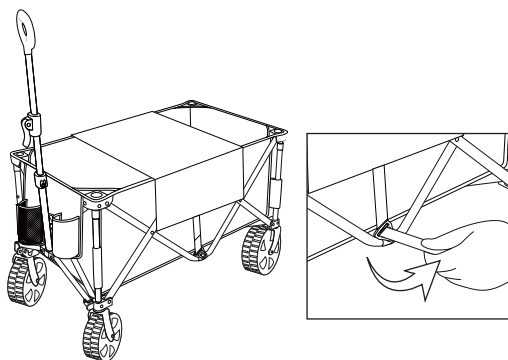
- 5. Unfold and set the base plate into bottom of wagon for added support.**



- 6. Additional Function: Turn the base plate into a tabletop. Remove the base plate from the bottom and turn it over. Take the support rods and insert them horizontally into the stabilizer pockets.**

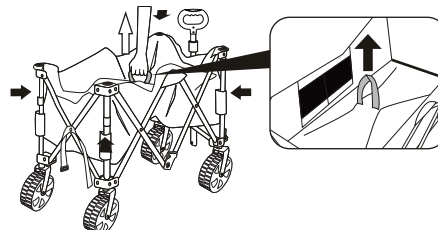


- 7. Put the base plate on the top of the wagon. On each side, pass each end of the webbing through the plastic buckle at the bottom of the wagon.**



DISASSEMBLY

1. Remove the base plate.
2. Pull the handle on bottom of wagon to fold up.
3. Fasten the strap to secure wagon closed.
4. Put on the carry bag.
5. Zip up to close carry bag, and close bottom self-adhesive closure.
6. Place base plate back into side pocket.



CARE & MAINTENANCE

- > Store wagon indoors in cool and dry location out of direct sunlight. If wagon becomes wet, dry thoroughly before storing.

WARRANTY

- > **1-YEAR WARRANTY:** This product carries a one (1) year warranty against defects in workmanship and materials. Woods agrees to replace a defective product, within the stated warranty period, when returned to the place of purchase with proof of purchase. This product is not guaranteed against wear or breakage due to misuse and/or abuse.